



Flight Procedure Tracking Form		Action: AMENDMENT	Task Type: IAP	Date Open: 10/02/2014	Task #: 2014100230357601001	Request #: 20141002303576
Procedure: RNAV (GPS) RWY 7 AMDT 2			Airport ID: K0VG	Airport: LEE COUNTY		Reimbursable #: NO
City: JONESVILLE	ST: VA	GPS #:	Estimated Chart Date: 03/02/2017		FICO #: 1175543	
Fac ID: N/A		Fac. Type:		Specialist: ROSE BOONE		
Procedure Review						
	Rec'd	Rel'd	Full Name	Comments		
Lead:	08/06/2015	01/17/2017	ANDI LAU	QUALITY Digitally signed by		
QA:	01/17/2017	11/08/2016	THOMAS KIRKPATRICK	24 DAVID W SAUER		
Liaison:	11/08/2016	11/08/2016	MARY MCDONALD	CHECKED Jan 23, 2017		
Procedure Comments:			ENROUTE-NON	Remark Type: INFORMATION		
<p>CONTACT: JULIE MORGAN, AJV-5420, 405-954-8568.</p> <p>11/07/2016: THIS IS AN UPDATED COPY OF THE FORM DEVELOPED ON 06/07/2016.</p> <p>1. REMOVED REFERENCE TO CAT D FROM CHANGES AND REASONS.</p> <p>01/18/2017: THIS IS A CORRECTED COPY OF THE FORM APPROVED ON 01/11/2017.</p> <p>1. REMOVED SACGO TO RW07: 3.00/40 FROM ADDITIONAL FLIGHT DATA.</p> <p>2. ADDED (CA) IN TERMINAL ROUTES, (CONT.) FOLLOWING 1643 MSL ON SEGMENT RW07 (MAP) - 1643 MSL.</p>						

RNAV (GPS) RWY 7
LEE COUNTY (OVG)

MISSED APPROACH: Climb to 5600 direct OKLUH and hold, continue climb-in-hold to 5600.

CTAF
122.9 **L**

5600	OKLUH
	

ELEV 1411 TDZE 1393

5003 X 75

0.9% UP

066° to RW07

MRL Rwy 7-25

REIL Rws 7 and 25

OLD

JONESVILLE, VIRGINIA

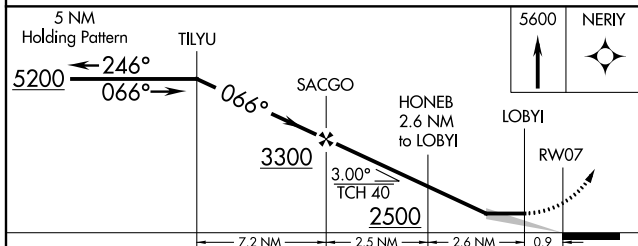
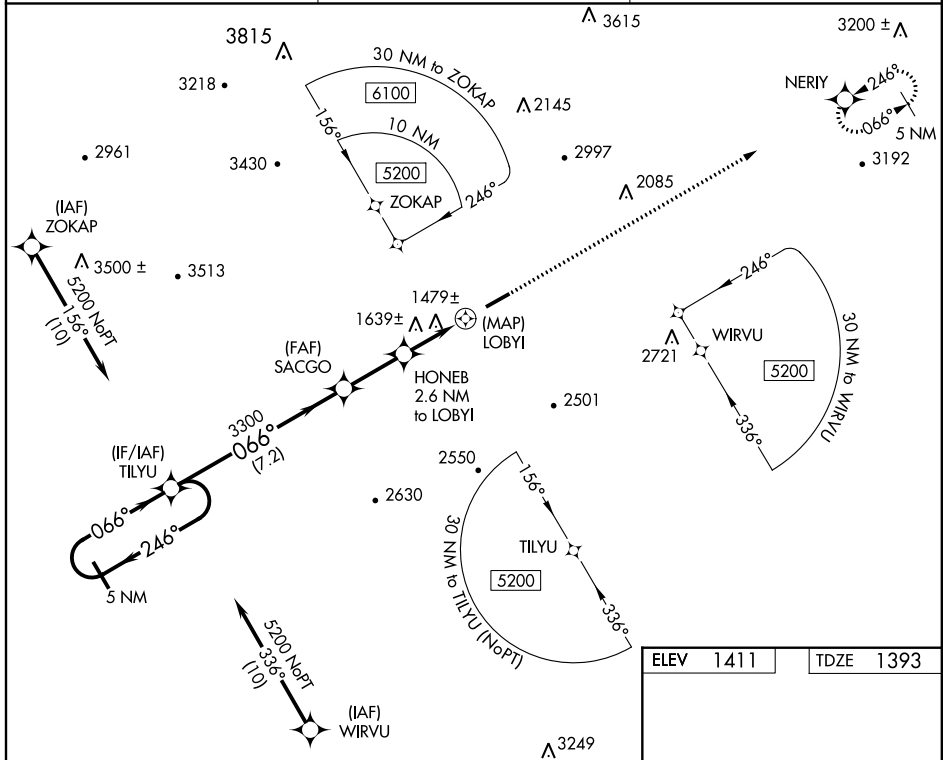
15176

WAAS CH 78430 W07A	APP CRS 066°	Rwy Idg TDZE Apt Elev	5003 1393 1411
--	------------------------	-----------------------------	---

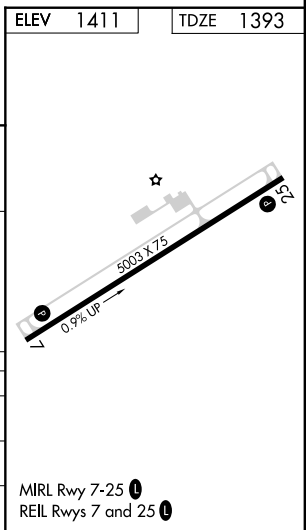
RNAV (GPS) RWY 7 LEE COUNTY (ØVG)

<p>▼ DME/DME RNP-0.3 NA. When local altimeter setting not received, use Middlesboro, KY altimeter setting and increase all MDA 100 feet, increase Straight-in/Circling Cat C visibility ¼ mile.</p>	<p>MISSED APPROACH: Climb to 5600 direct NERIY and hold, continue climb-in-hold to 5600.</p>
---	--

AWOS-3 120.125	ATLANTA CENTER 127.55 269.50	CTAF 122.9 0
--------------------------	--	------------------------



CATEGORY	A	B	C	D
LP MDA	1740-1½	347 (400-1½)		NA
LNAV MDA	1940-1½	547 (600-1½)	1940-1½ 547 (600-1½)	NA
CIRCLING	2100-1½	689 (700-1½)	2100-2 689 (700-2)	NA



JONESVILLE, VIRGINIA

Amdt 1A 25JUN15

36°39'N-83°13'W

LEE COUNTY (ØVG) RNAV (GPS) RWY 7

MIRL Rwy 7-25 0
REIL Rwy 7 and 25 0

NE-3, 26 MAY 2016 to 23 JUN 2016

NE-3, 26 MAY 2016 to 23 JUN 2016

TERMINAL AIRSPACE DATA REQUIREMENTS

CITY:

STATE:

AIRPORT NAME:

ID:

PROCEDURE:

AMDT:

DOCKET # :

(96-AXX-X/Required/Not Required)

ALL DIST TO 1/100 NM; ELEV TO NEAREST FT; COORD TO 1/100 SEC; DEG TO 1/100 DG.

1. Distance from _____ to 1000' point _____

(Enter THLD, FAF, ARP, FACILITY, as appropriate)

2. Width of _____ segment at 1000' point _____

(Enter appropriate segment , final, intermediate, etc.)

3. True Course of _____ segment containing 1000' point _____

4. High Terrain in _____ segment containing 1000' point _____

5. Distance from _____ to 1500' point _____

(If 1500' point in PT maneuvering area or holding pattern note in remarks)

6. Width of _____ segment at 1500' point _____

7. True Course of _____ segment containing 1500' point _____

8. High Terrain in _____ segment containing 1500' point _____

9. Threshold Coordinates (if straight-in) ... _____ / _____

10. ARP Coordinates _____ / _____

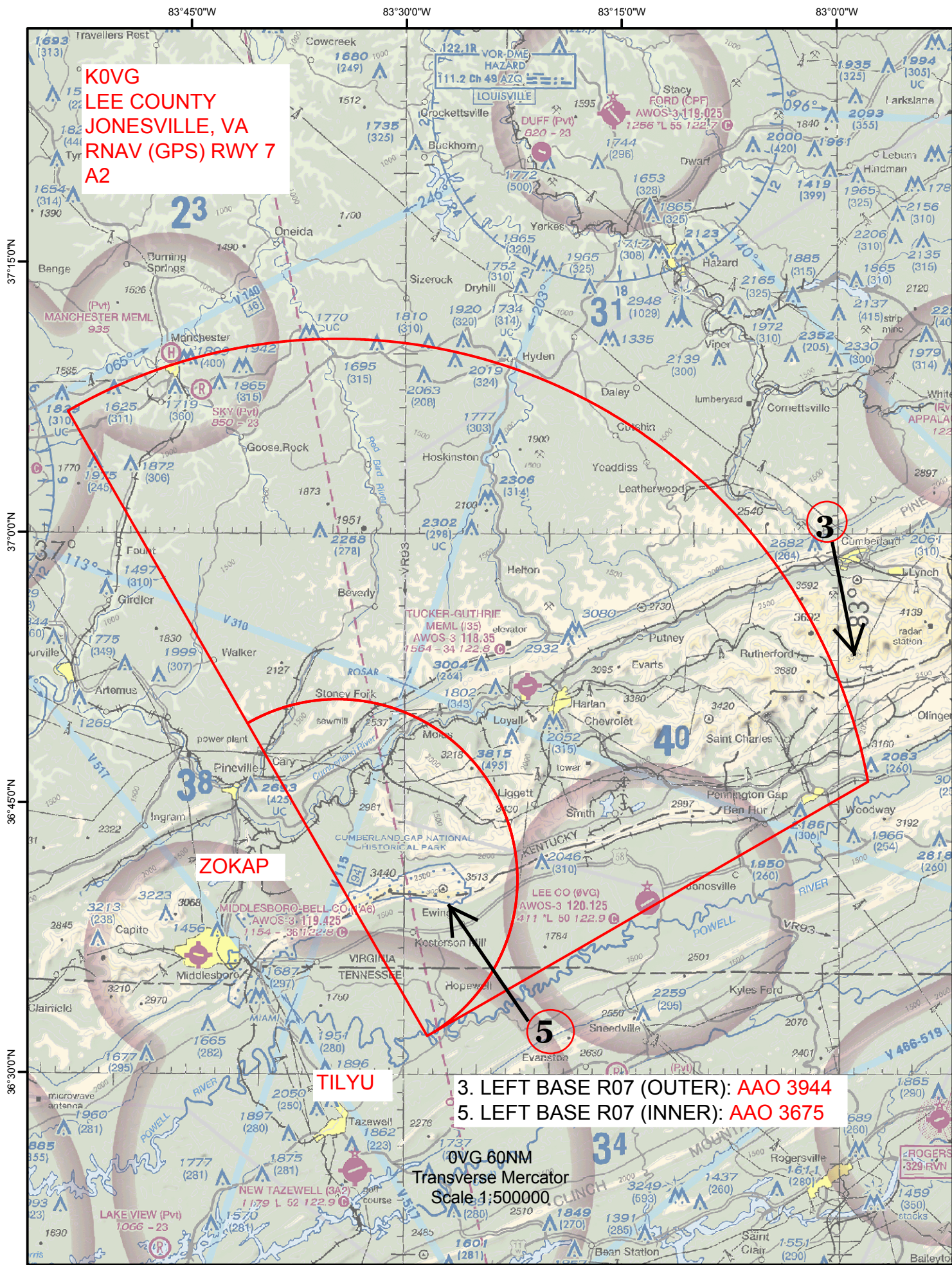
11. Runway Approach End and distance furthest from ARP.....RWY _____

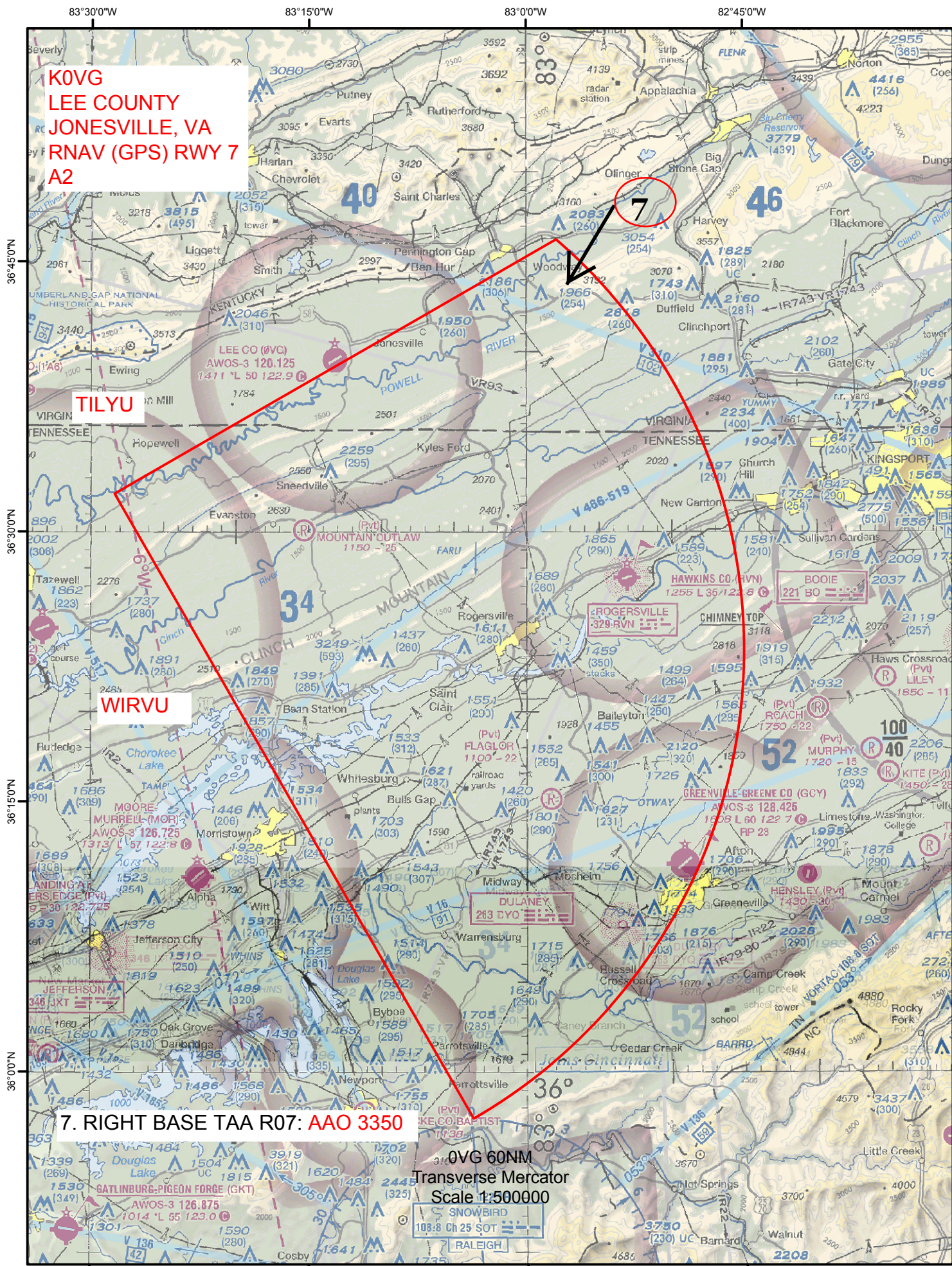
Distance _____ NM

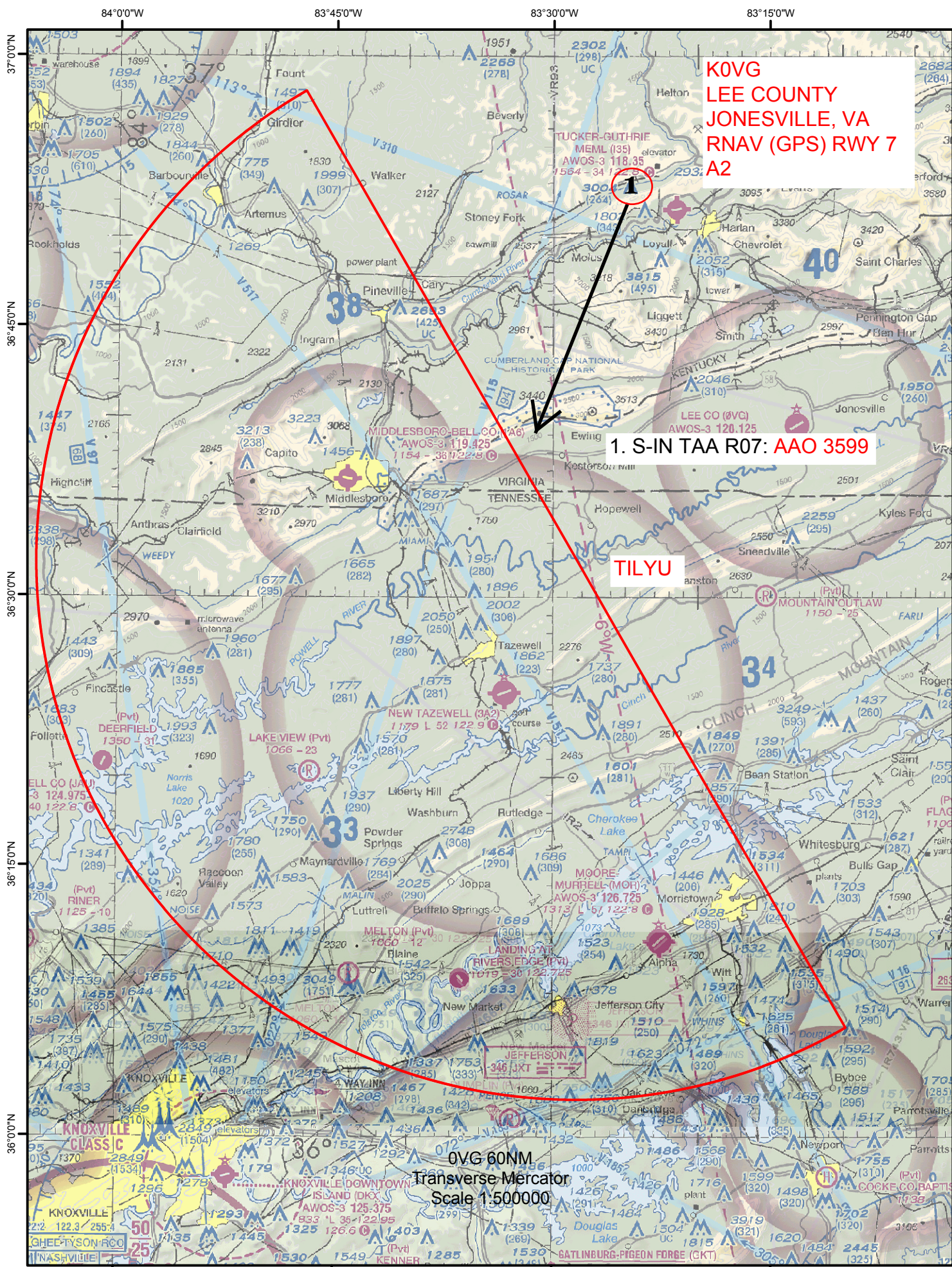
12. FAF Coordinates _____ / _____

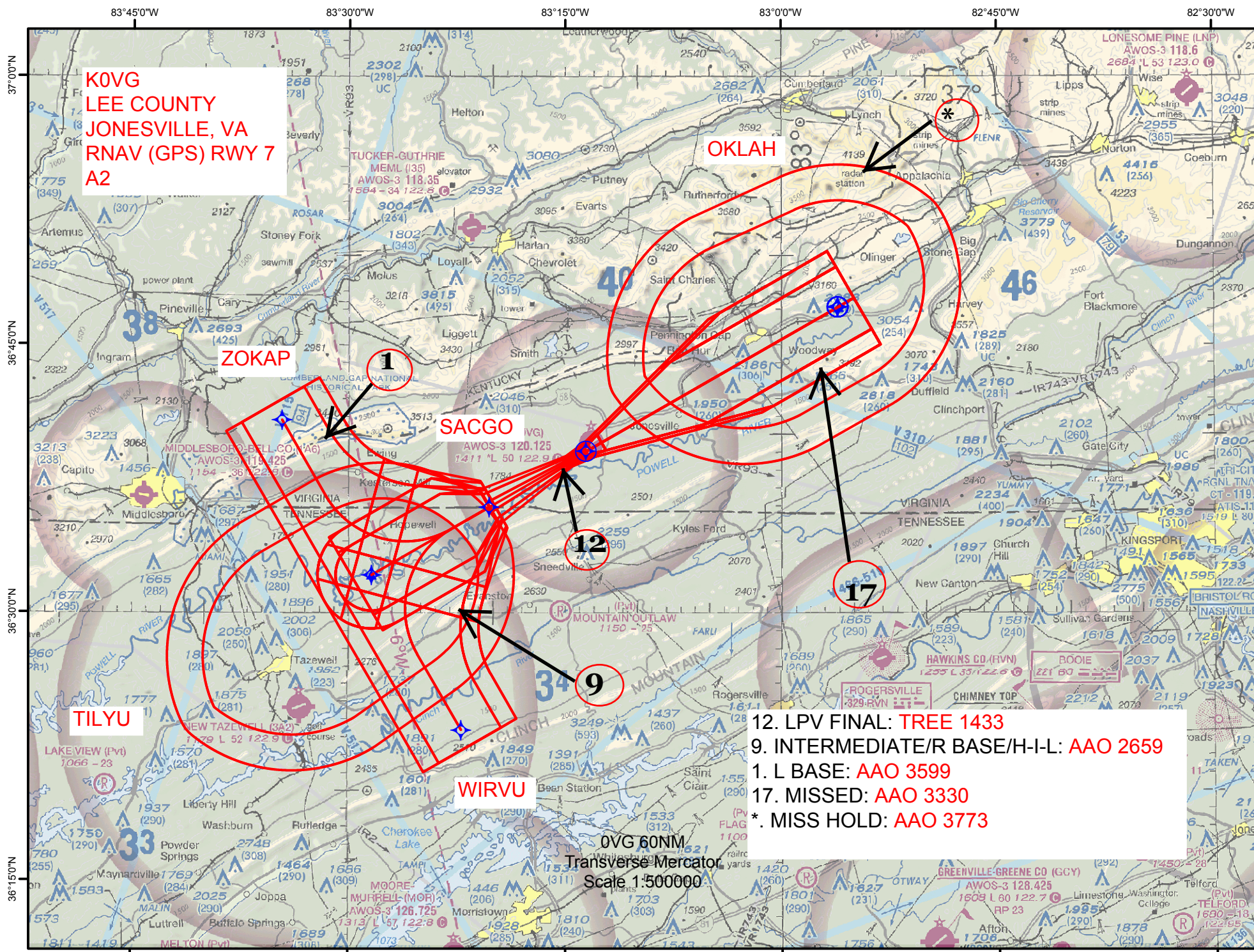
(Click to Select)

REMARKS:

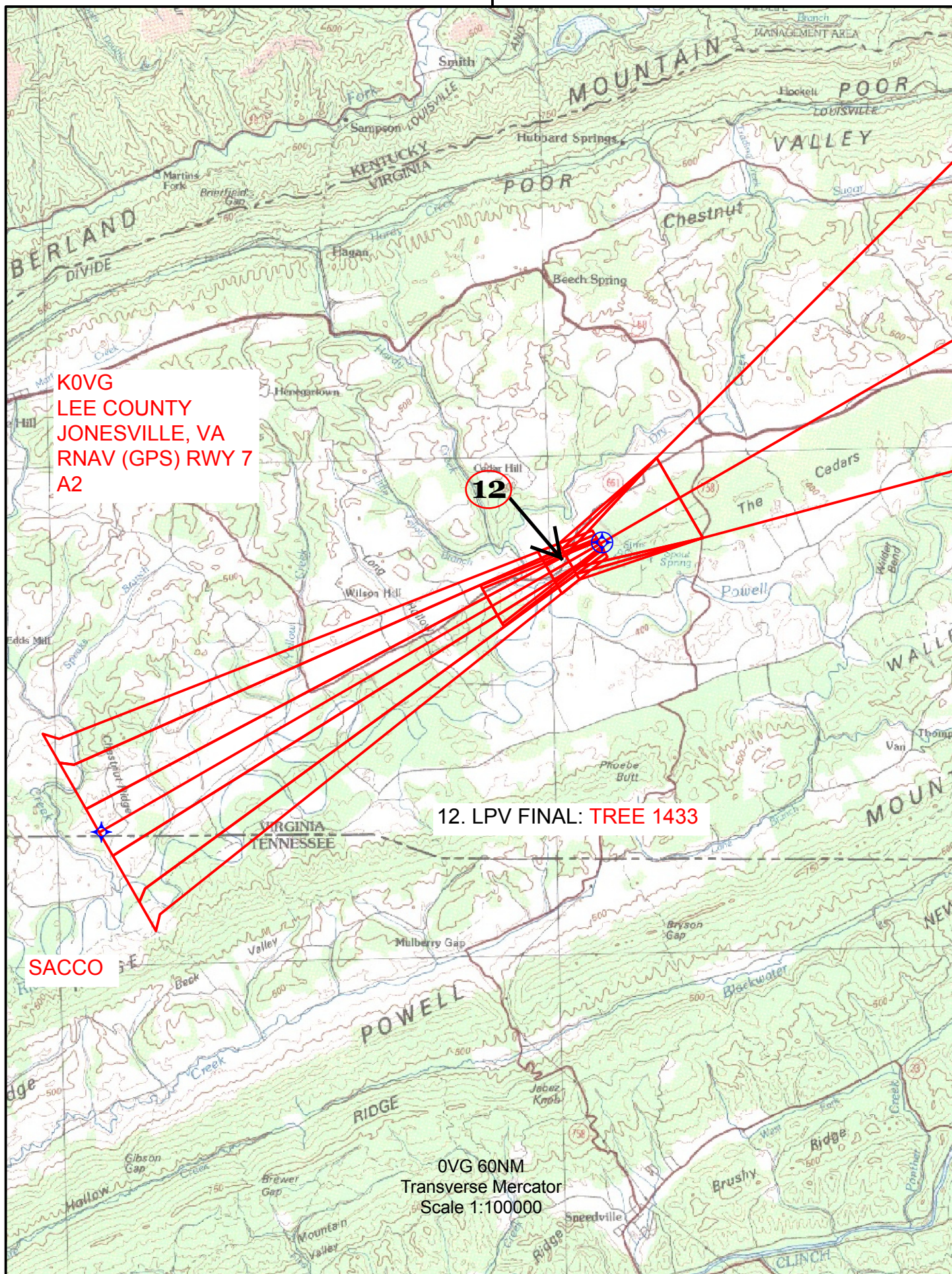








12. LPV FINAL: TREE 1433
9. INTERMEDIATE/R BASE/H-I-L: AAO 2659
1. L BASE: AAO 3599
17. MISSED: AAO 3330
*. MISS HOLD: AAO 3773



83°15'0"W

K0VG
LEE COUNTY
JONESVILLE, VA
RNAV (GPS) RWY 7
A2

13

13. LNAV/VNAV FINAL: TREE 1687

SACCO

OVG 60NM
Transverse Mercator
Scale 1:100000

36°30'0"N

83°15'0"W

K0VG
LEE COUNTY
JONESVILLE, VA
RNAV (GPS) RWY 7
A2

