

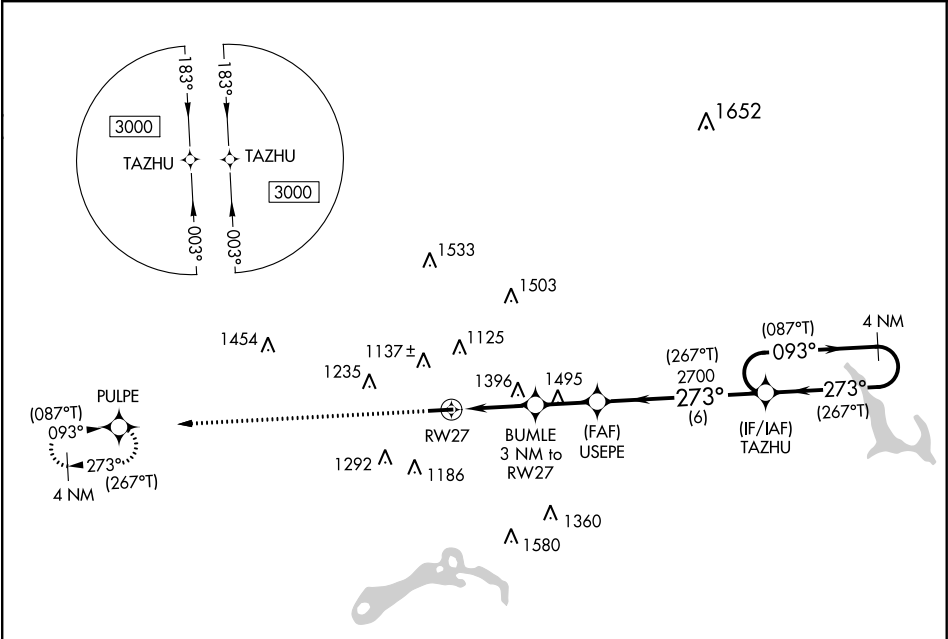
<b>Flight Procedure Tracking Form</b>		<b>Action:</b> FLIGHT CHECK	<b>Task Type:</b> IAP	<b>Date Open:</b> 03/02/2016	<b>Task #:</b> 2014092527396301008	<b>Request #:</b> 20140925273963
<b>Procedure:</b> RNAV (GPS) RWY 27 AMDT 1				<b>Airport ID:</b> KVTA	<b>Airport:</b> NEWARK-HEATH	<b>Reimbursable #:</b> NO
<b>City:</b> NEWARK	<b>ST:</b> OH	<b>GPS #:</b>	<b>Estimated Chart Date:</b> 05/26/2016		<b>FICO #:</b>	
<b>Fac ID:</b> RNAV		<b>Fac. Type:</b>			<b>Specialist:</b> THOMAS KIRKPATRICK	
<b>Procedure Review</b>						
	<b>Rec'd</b>	<b>Rel'd</b>	<b>Full Name</b>		<b>Comments</b>	
<b>Lead:</b>	04/23/2015					
<b>QA:</b>			PJO 04/08/2016 6			
<b>Liaison:</b>						
<b>Procedure Comments:</b>			ENROUTE-NON			
			<b>Remark Type:</b> INFORMATION			
DIGITAL PROCESS						
CONTACT: JACOB POWERS 405-954-8702 / PETE GETZ 405-954-4919						

WAAS CH <b>97439</b> <b>W27A</b>	APP CRS <b>273°</b>	Rwy Idg TDZE Apt Elev	<b>4649</b> <b>879</b> <b>884</b>
--	------------------------	-----------------------------	---

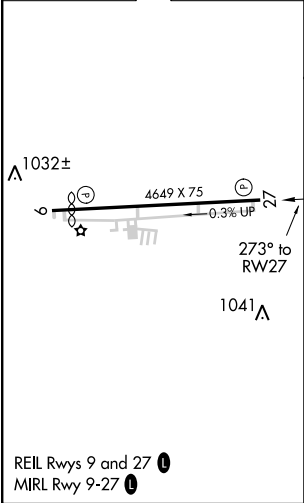
RNAV (GPS) RWY 27  
NEWARK-HEATH (VTA)

<p><b>⚠</b> Night landing: Rwy 9 NA. DME/DME RNP-0.3 NA. Helicopter visibility reduction below 3/4 SM NA. VDP NA when using Port Columbus Intl altimeter setting. When local altimeter setting not received, use Port Columbus Intl altimeter setting and increase all MDA 60 feet; increase Circling Cat C/D visibility 1/4 mile.</p>	<p>MISSED APPROACH: Climb to 3100 direct PULPE and hold.</p>
--	--

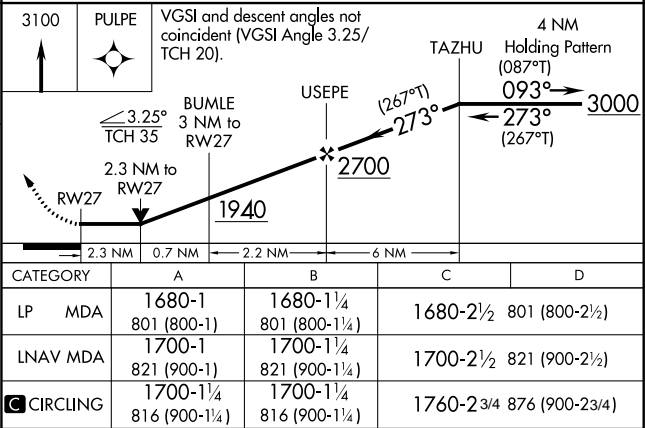
ASOS <b>121.125</b>	COLUMBUS APP CON <b>125.95 317.775</b>	CLNC DEL <b>125.175</b>	UNICOM <b>122.7</b> (CTAF)	<b>123.3</b> <b>0</b>
------------------------	---	----------------------------	-------------------------------	-----------------------



ELEV 884	TDZE 879
----------	----------



PROTOTYPE-NOT FOR NAVIGATION



OLD

GPS RWY 27  
NEWARK-HEATH (VTA)

APP CRS	Rwy Idg	4649
273°	TDZE	879
	Apt Elev	884

**MISSED APPROACH:** Climb to 2000 then climbing right turn to 3000 direct APE VORTAC and hold.

**T**

**A NA**

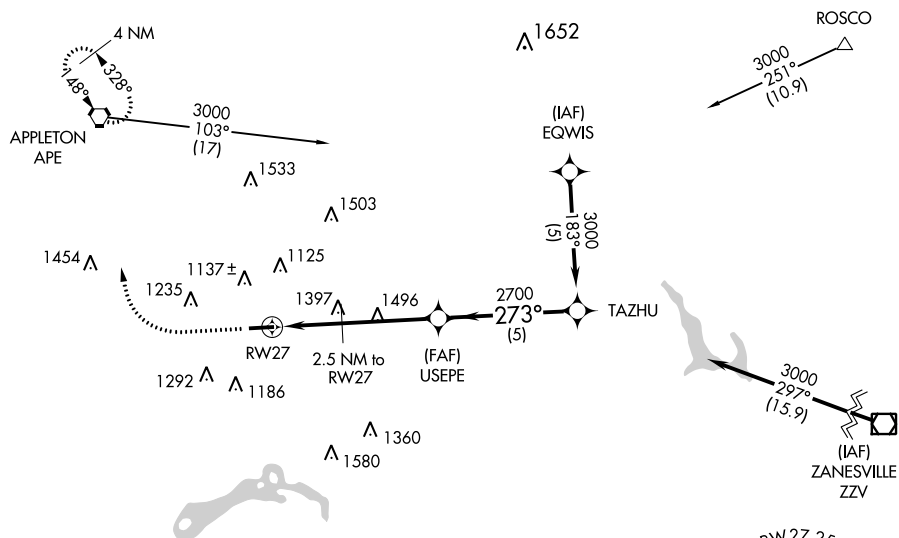
ASOS  
121.125

COLUMBUS APP CON  
125 95 317 775

CLNC DEL  
**125.175**

UNICOM  
122.7 (CTAF)

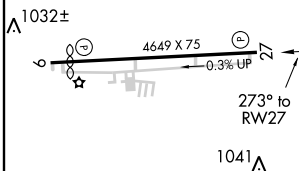
123.3 0



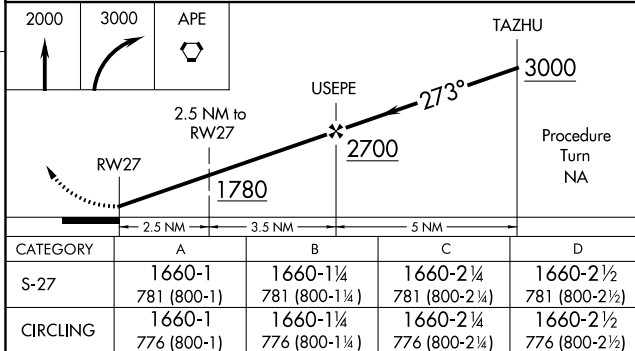
EC-2, 04 FEB 2016 to 03 MAR 2016

ELEV 884

TDZE 879



REIL Rwy 9 and 27 **L**  
MIRL Rwy 9-27 **L**



NEWARK, OHIO  
Orig-A 22APR99

NEWARK-HEATH (VTA)  
GPS RWY 27

40°01'N-82°28'W

# TERMINAL AIRSPACE DATA REQUIREMENTS

CITY: **NEWARK**

STATE: **OH**

AIRPORT NAME: **NEWARK-HEATH**

ID: **KVTA**

PROCEDURE: **RNAV (GPS) RWY 27**

AMDT: **1**

DOCKET#: **NOT REQUIRED**

(96-AXX-X/Required/Not Required)

**ALL DIST TO 1/100 NM; ELEV TO NEAREST FT; COORD TO 1/100 SEC; DEG TO 1/100 DG.**

- |   |                                 |                                |               |
|---|---------------------------------|--------------------------------|---------------|
| 1. Distance from  | <u>THLD</u>                     | to 1000' point                 | <u>3.75</u>   |
| <small>(Enter THLD, FAF, ARP, FACILITY, as appropriate)</small>                           |                                 |                                |               |
| 2. Width of   | <u>FINAL</u>                    | segment at 1000' point         | <u>1.20</u>   |
| <small>(Enter appropriate segment, final, intermediate, etc.)</small>                     |                                 |                                |               |
| 3. True Course of   | <u>FINAL</u>                    | segment containing 1000' point | <u>267.03</u> |
| 4. High Terrain in  | <u>FINAL</u>                    | segment containing 1000' point | <u>1221</u>   |
| 5. Distance from  | <u>THLD</u>                     | to 1500' point                 | <u>5.20</u>   |
| <small>(If 1500' point in PT maneuvering area or holding pattern note in remarks)</small> |                                 |                                |               |
| 6. Width of   | <u>FINAL</u>                    | segment at 1500' point         | <u>2.14</u>   |
| 7. True Course of   | <u>FINAL</u>                    | segment containing 1500' point | <u>267.03</u> |
| 8. High Terrain in  | <u>FINAL</u>                    | segment containing 1500' point | <u>1221</u>   |
| 9. Threshold Coordinates (if straight-in) ...   | <u>400129.99N / 0822712.70W</u> |                                |               |
| 10. ARP Coordinates .....   | <u>400128.80N / 0822742.50W</u> |                                |               |
| 11. Runway Approach End and distance furthest from ARP .....                              | RWY                             | <u>9</u>                       |               |
|   | Distance                        | <u>0.38</u>                    | NM            |
| 12. FAF Coordinates .....   | <u>400146.36N / 0822026.90W</u> |                                |               |

**REMARKS: Approach/Drawing attached.**

**30 NM TAZHU (IF/IAF): 400204.75N/0821238.83W**

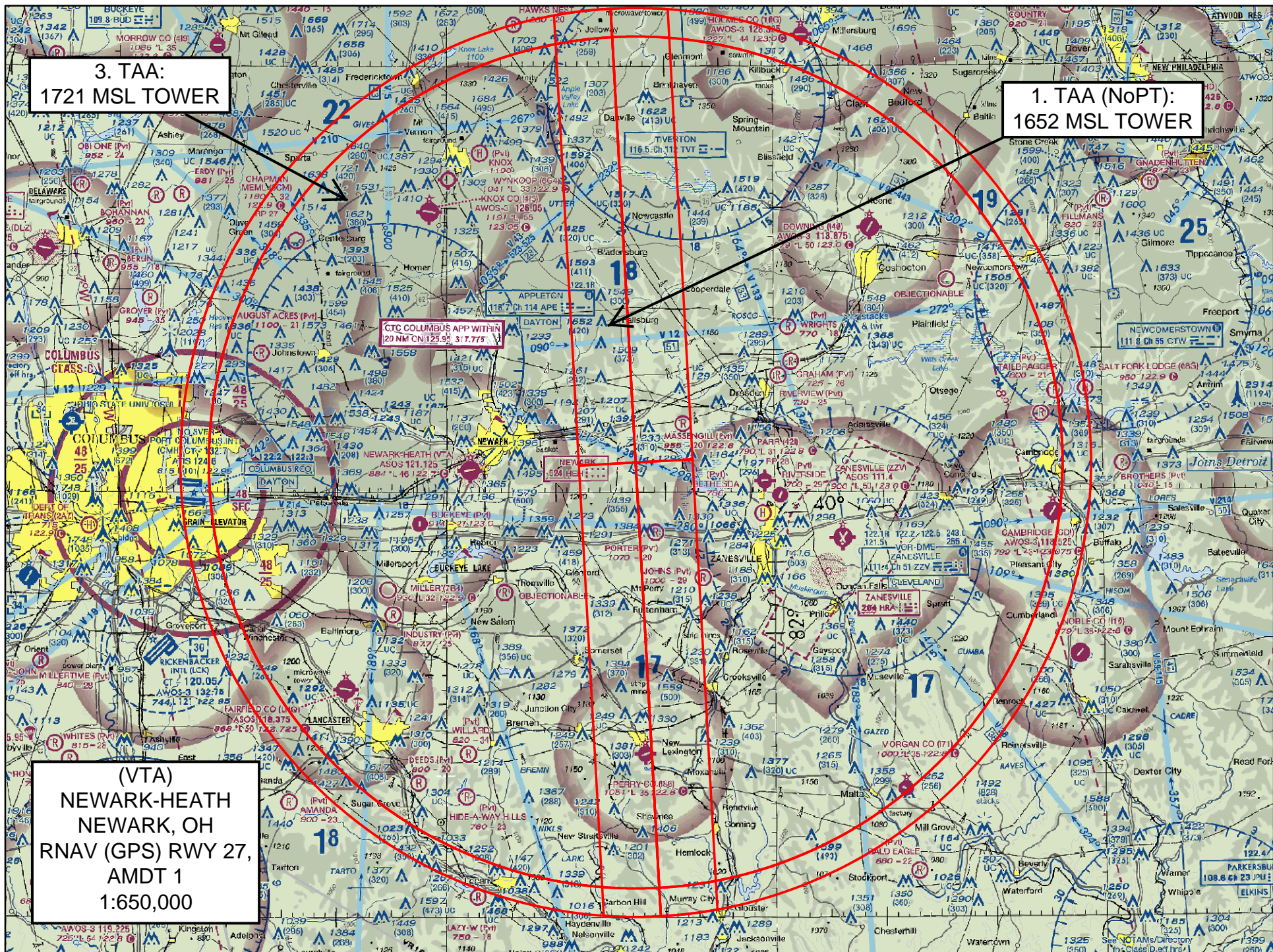


3. TAA:  
1721 MSL TOWER

1. TAA (NoPT):  
1652 MSL TOWER

CTC COLUMBUS APP WITHIN  
10 NM ON 125.92 317.775

(VTA)  
NEWARK-HEATH  
NEWARK, OH  
RNAV (GPS) RWY 27,  
AMDT 1  
1:650,000





(VTA)  
NEWARK-HEATH  
NEWARK, OH  
RNAV (GPS) RWY 27,  
AMDT 1  
1:500,000

MISS HOLDING:  
1548 MSL TOWER

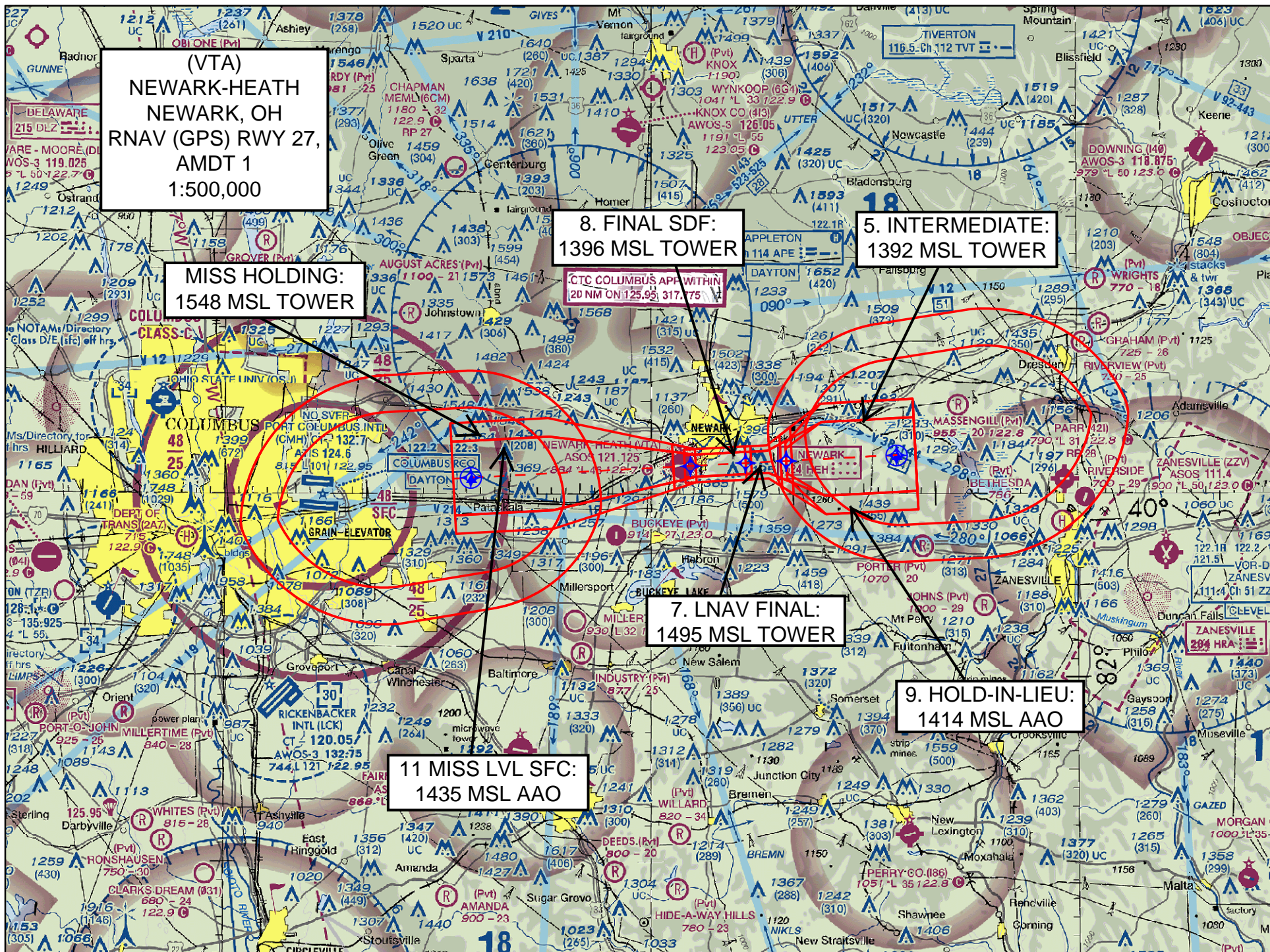
8. FINAL SDF:  
1396 MSL TOWER

5. INTERMEDIATE:  
1392 MSL TOWER

7. LNAV FINAL:  
1495 MSL TOWER

9. HOLD-IN-LIEU:  
1414 MSL AAO

11 MISS LVL SFC:  
1435 MSL AAO





(VTA)  
NEWARK-HEATH  
NEWARK, OH  
RNAV (GPS) RWY 27,  
AMDT 1  
1:100,000

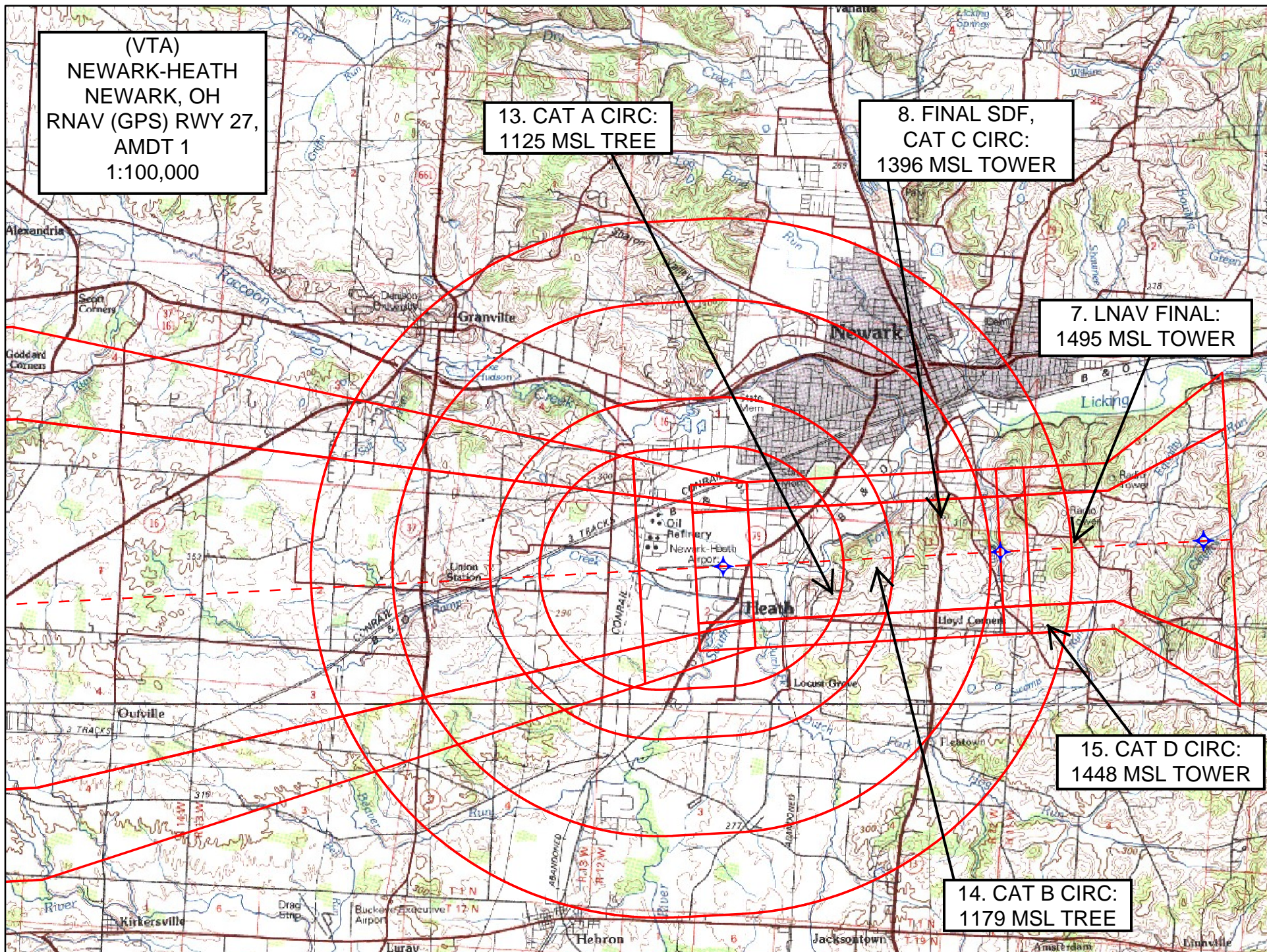
13. CAT A CIRC:  
1125 MSL TREE

8. FINAL SDF,  
CAT C CIRC:  
1396 MSL TOWER

7. LNAV FINAL:  
1495 MSL TOWER

15. CAT D CIRC:  
1448 MSL TOWER

14. CAT B CIRC:  
1179 MSL TREE





(VTA)  
NEWARK-HEATH  
NEWARK, OH  
RNAV (GPS) RWY 27,  
AMDT 1  
1:100,000

8. FINAL SDF:  
1396 MSL TOWER

7. LP FINAL:  
1495 MSL TOWER

