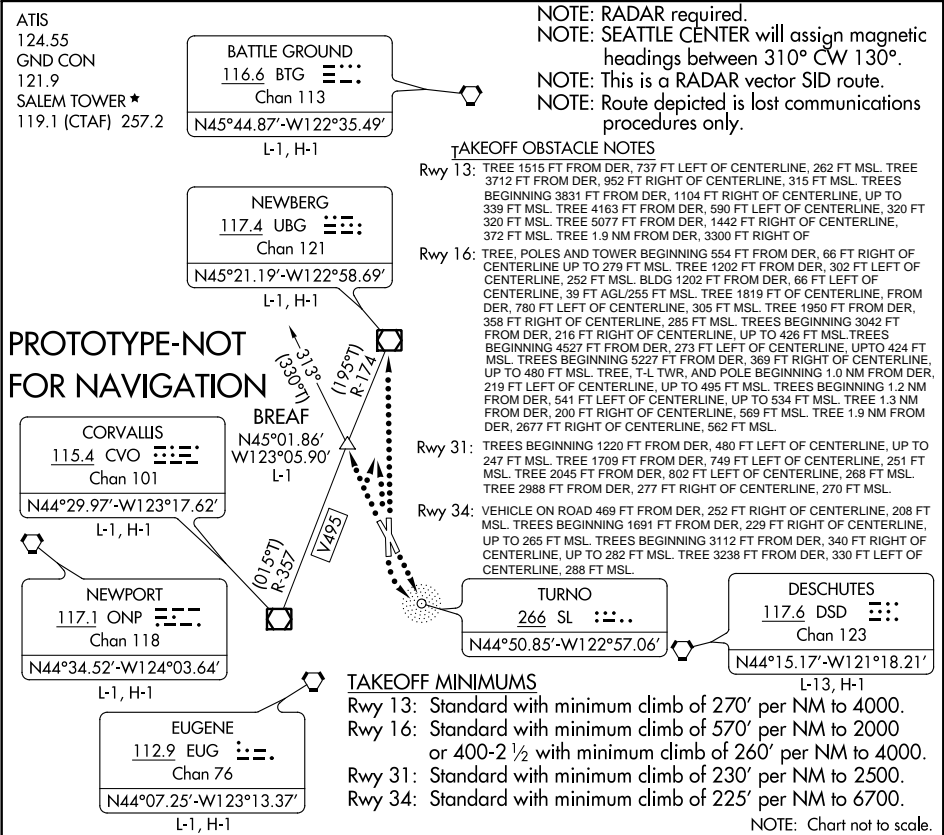
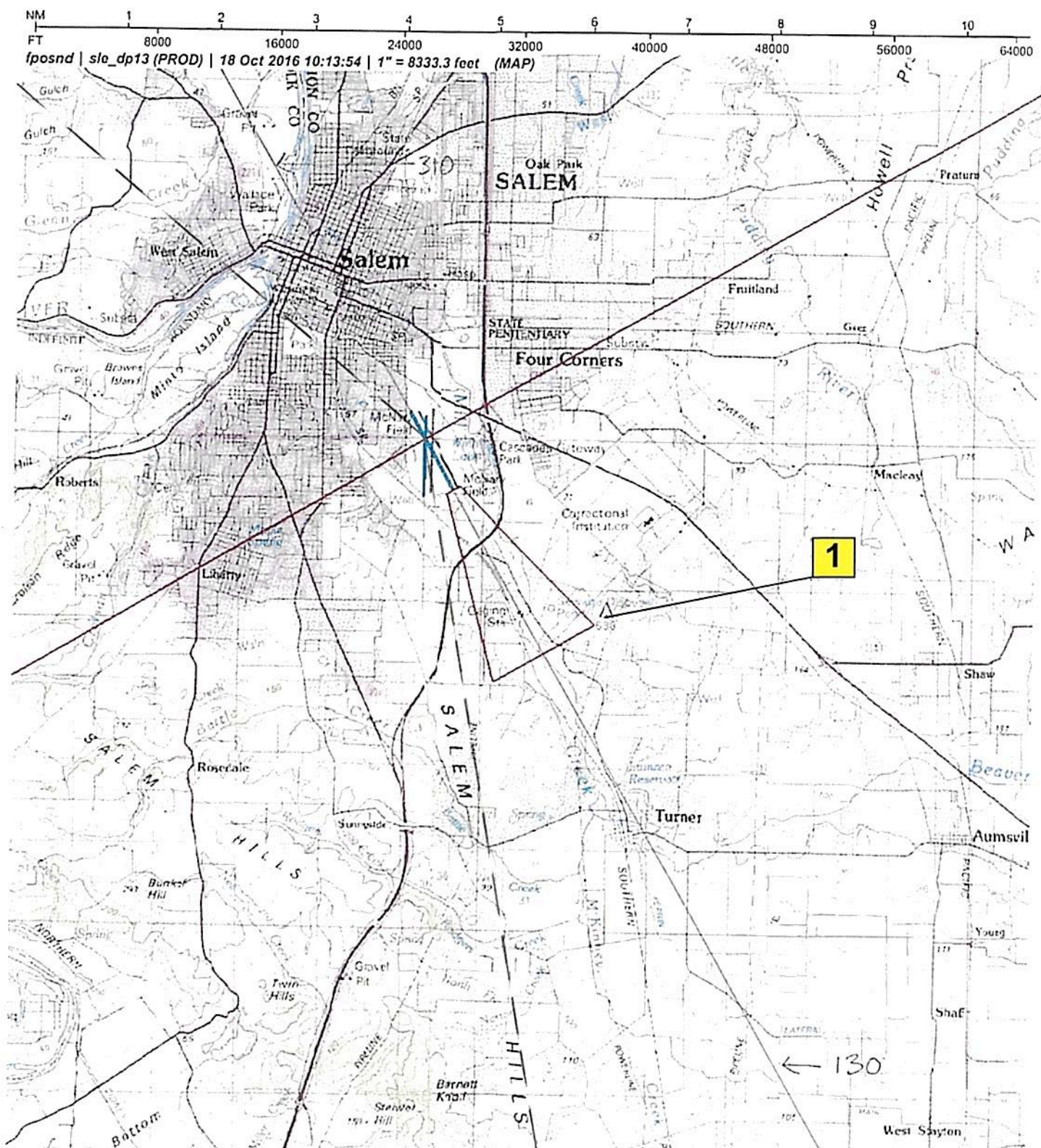
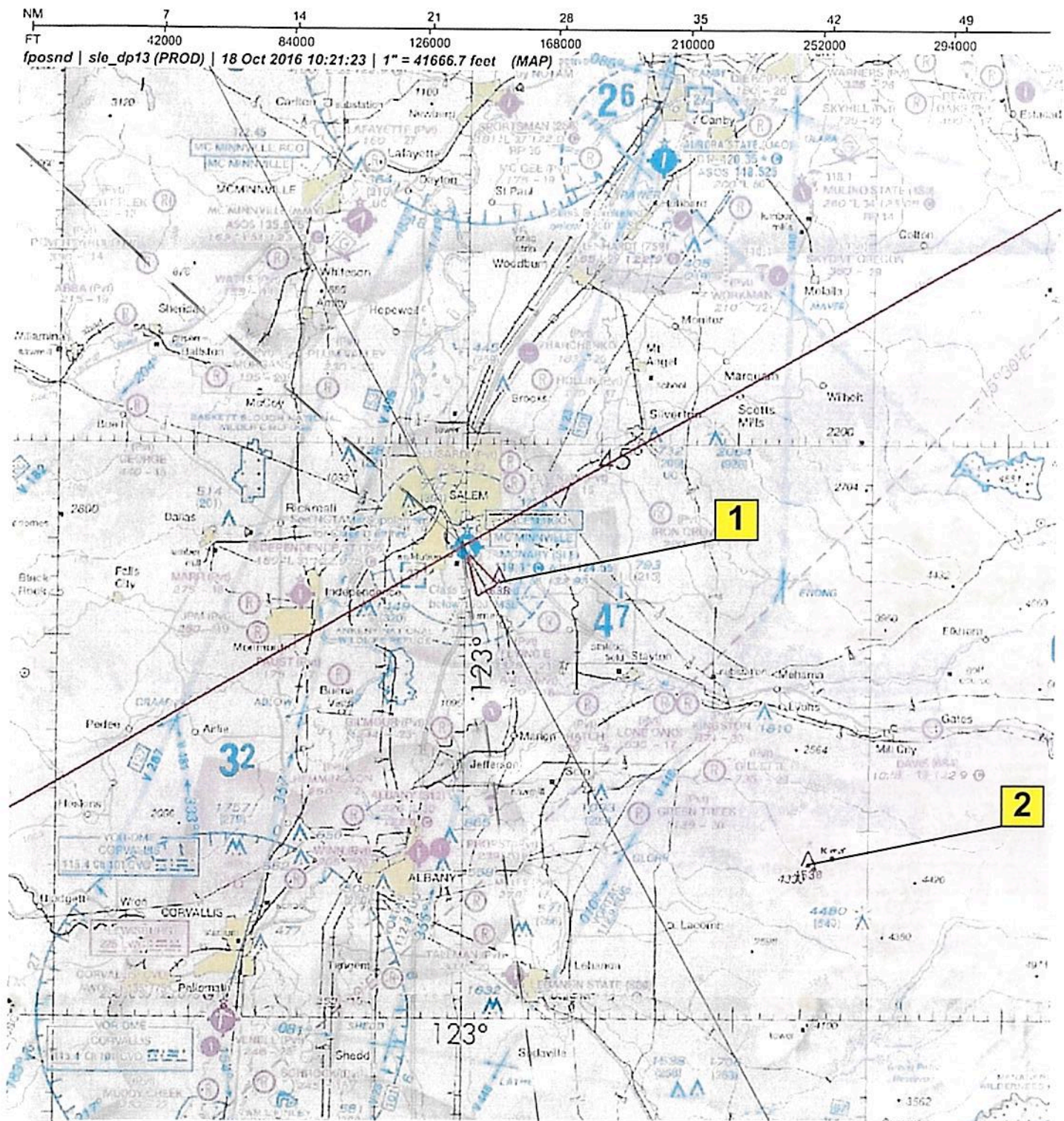


Flight Procedure Tracking Form		Action: FLIGHT CHECK	Task Type: SID	Date Open: 09/22/2014	Task #: 2014092229591302002	Request #: 20140922295913
Procedure: SID SALEM FOUR SALEM OR KSLE			Airport ID: KSLE	Airport: MCNARY FLD		Reimbursable #: NO
City: SALEM	ST: OR	GPS #:	Estimated Chart Date: 01/05/2017		FICO #:	
Fac ID: N/A		Fac. Type:		Specialist: SYLVAN DRAKES		
Procedure Review						
	Rec'd	Rel'd	Full Name	Comments		
Lead:	06/30/2016	08/15/2016	BEV L BORDY	<div style="border: 1px solid green; padding: 5px; display: inline-block;"> APPROVED <small>By Steven M Barnett at 2:02 pm, Dec 19, 2016</small> </div> <div style="text-align: right; margin-top: -20px;"> QUALITY 23 CHECKED </div>		
QA:	08/15/2016					
Liaison:						
Procedure Comments:			ENROUTE	Remark Type: INFORMATION		
MAJOR AMENDMENT DUE TO THE OM PORTION OF TURNO LOM BEING REMOVED ; A STAND ALONE NDB (SL) WILL REMAIN. CONTACT: BEVERLY BORDY AJV-543 LEADS, 405-954-8293. <div style="text-align: right; margin-top: 20px;"> QUALITY 28 CHECKED </div>						

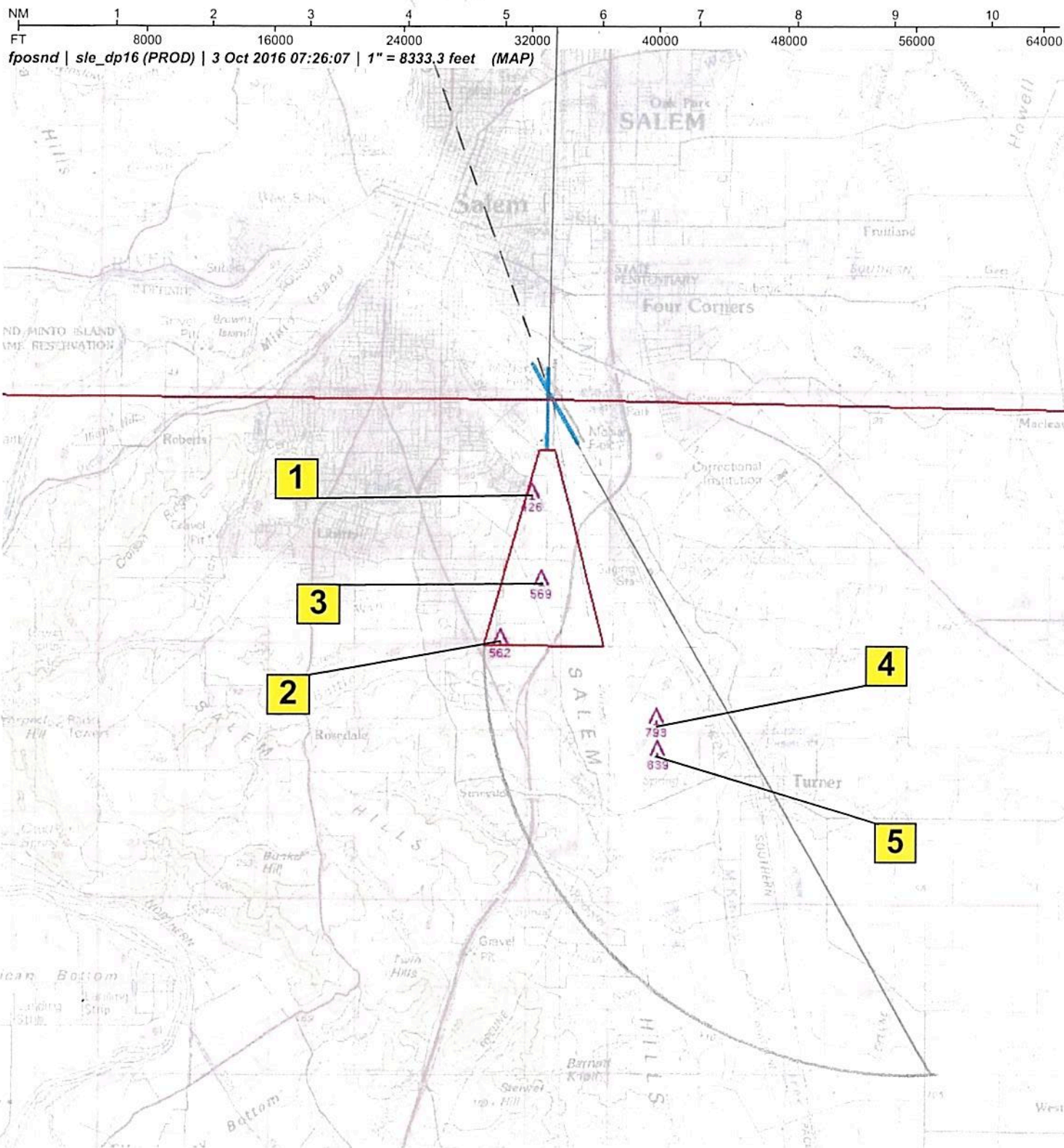




Airport ID:	KSLE	FM 15A			
Apt Name:	MCNARY FIELD	No	SEGMENT	OBSTRUCTION	ELEV
City:	SALEM	1	CG	TREE	638
State:	OR				
Scale:	1:100,000				
Proc ID:	SALEM FOUR RWY 13				
Amdt #:	FOUR				



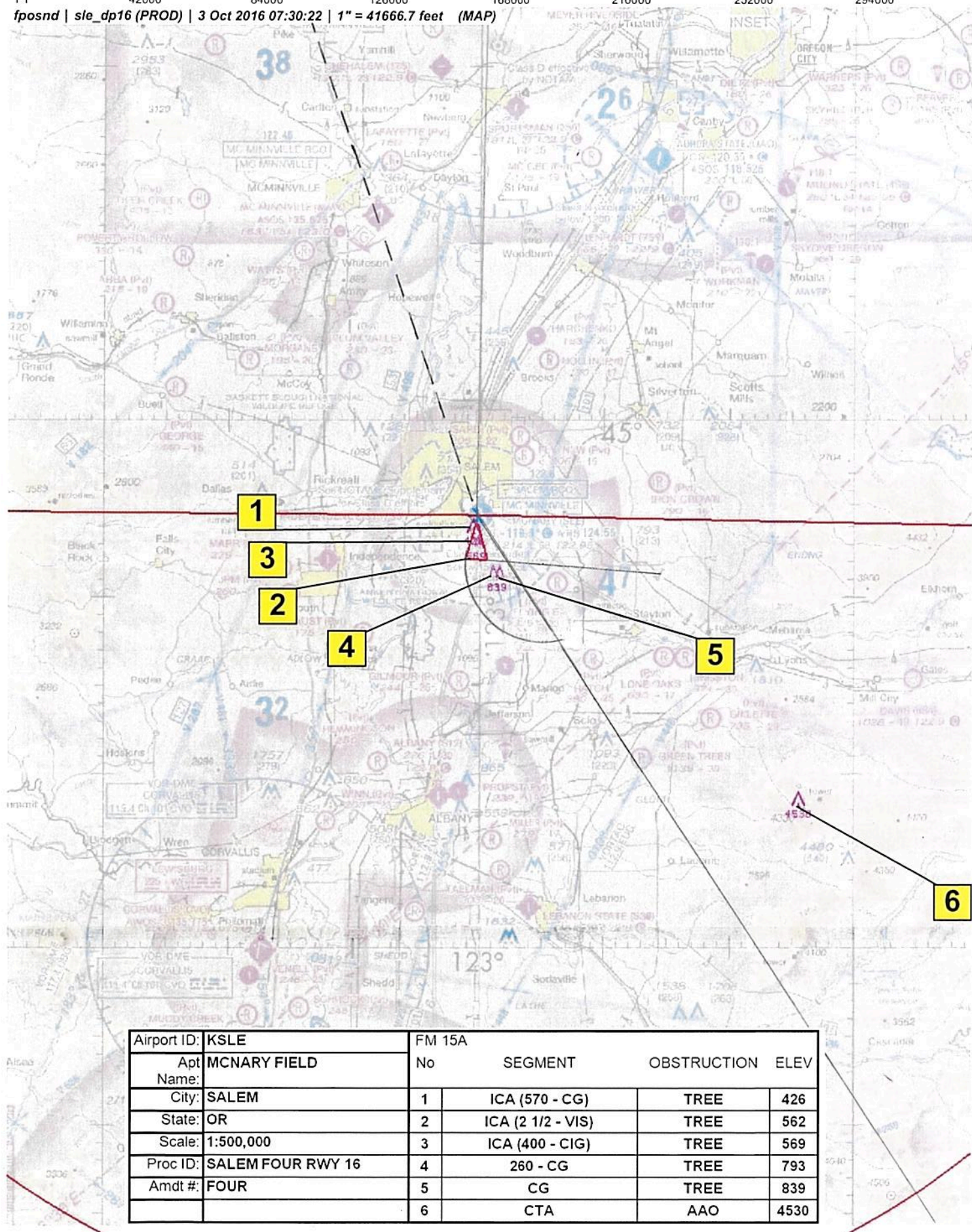
Airport ID: KSLE	FM 15A				
Apt Name: MCNARY FIELD	No	SEGMENT	OBSTRUCTION		ELEV
City: SALEM	1	270 - CG	TREE		638
State: OR	2	CTA	AAO		4530
Scale: 1:500,000					
Proc ID: SALEM FOUR RWY 13					
Amdt #: FOUR					

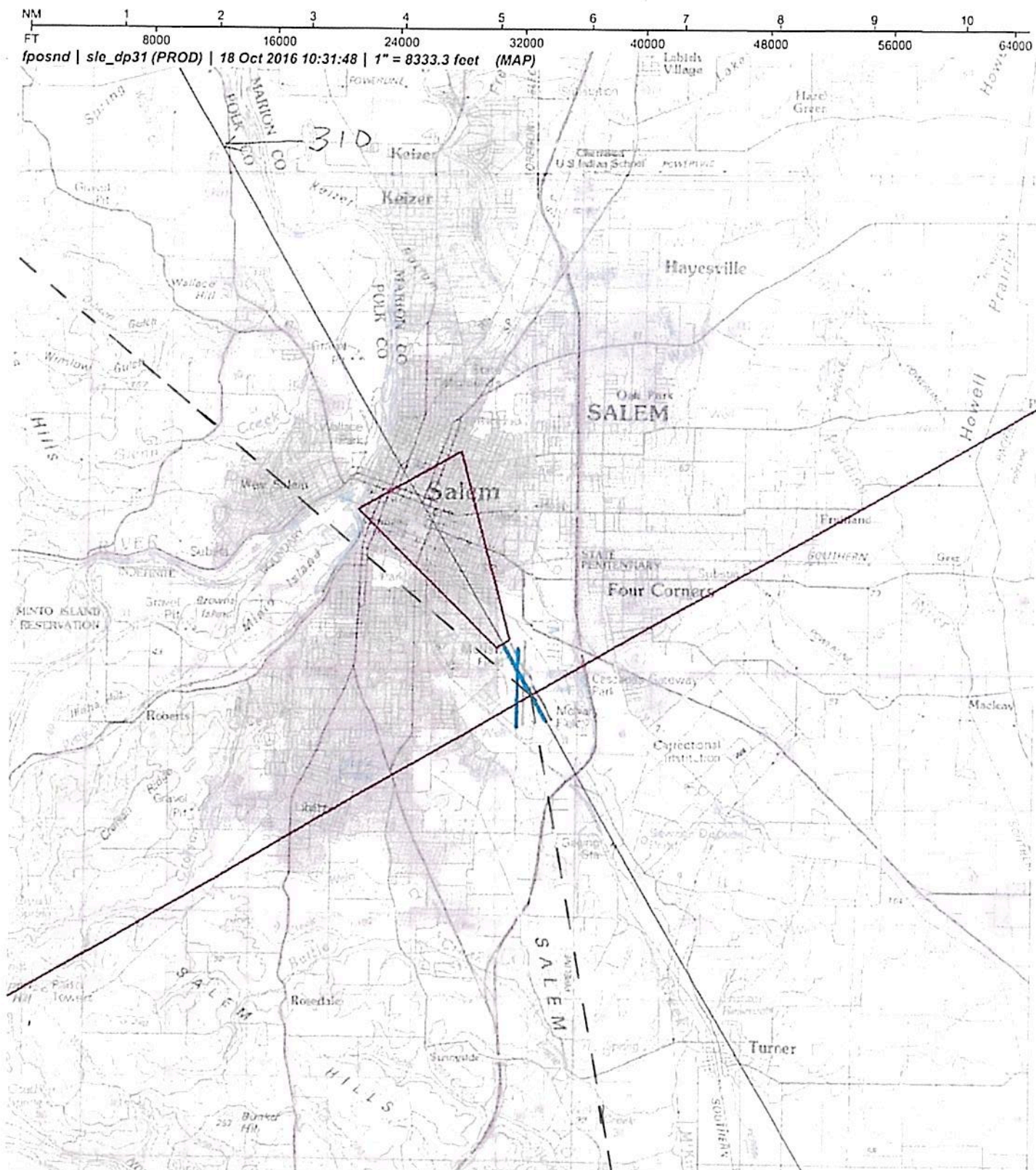


Airport ID:	KSLE	FM 15A			
Apt Name:	MCNARY FIELD	No	SEGMENT	OBSTRUCTION	ELEV
City:	SALEM	1	ICA (570 - CG)	TREE	426
State:	OR	2	ICA (2 1/2 - VIS)	TREE	562
Scale:	1:100,000	3	ICA (400 - CIG)	TREE	569
Proc ID:	SALEM FOUR RWY 16	4	CG	TREE	793
Amdt #:	FOUR	5	CG	TREE	839

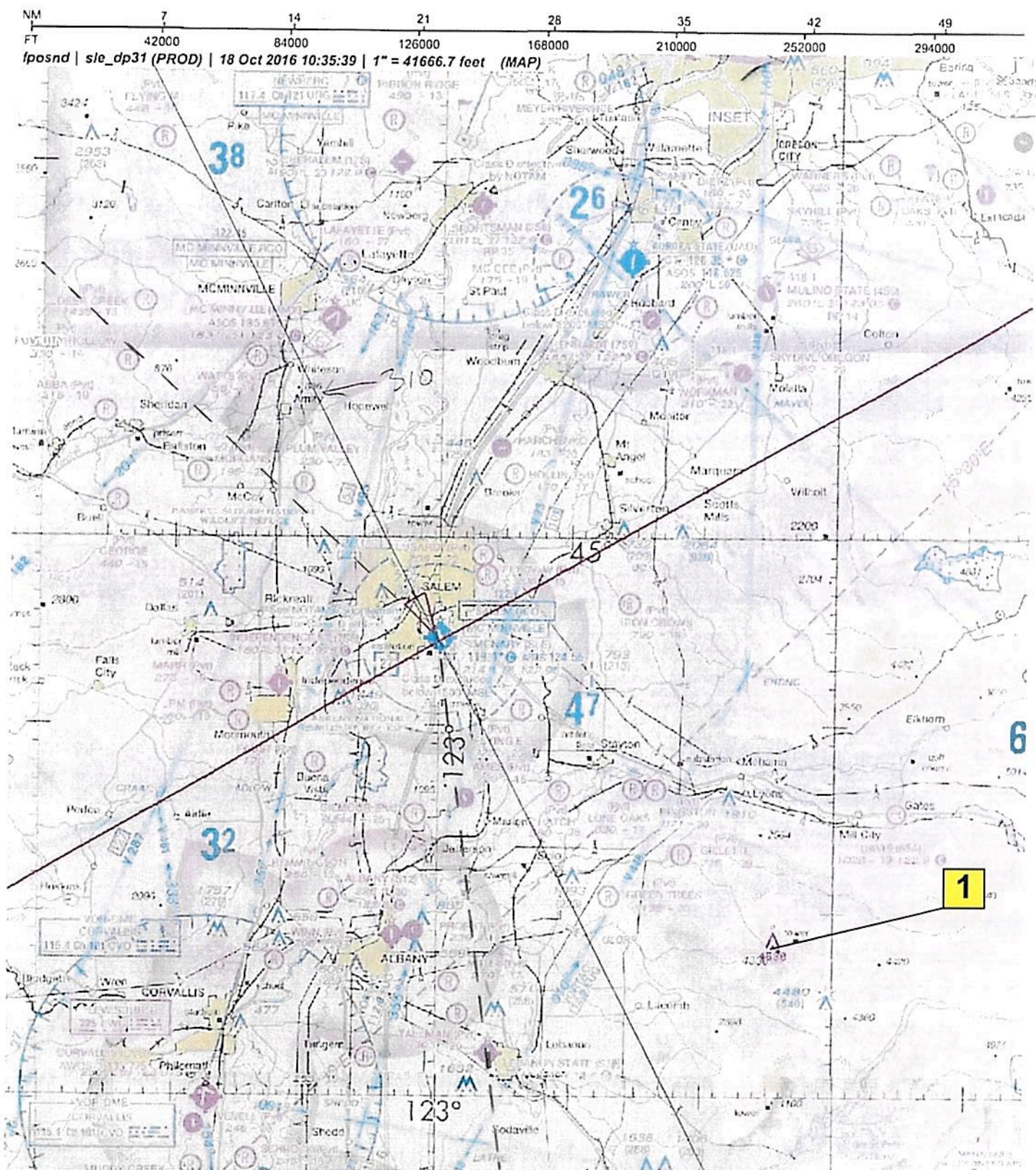
NM 7 14 21 28 35 42 49
 FT 42000 84000 126000 168000 210000 252000 294000

fposnd | sle_dp16 (PROD) | 3 Oct 2016 07:30:22 | 1" = 41666.7 feet (MAP)

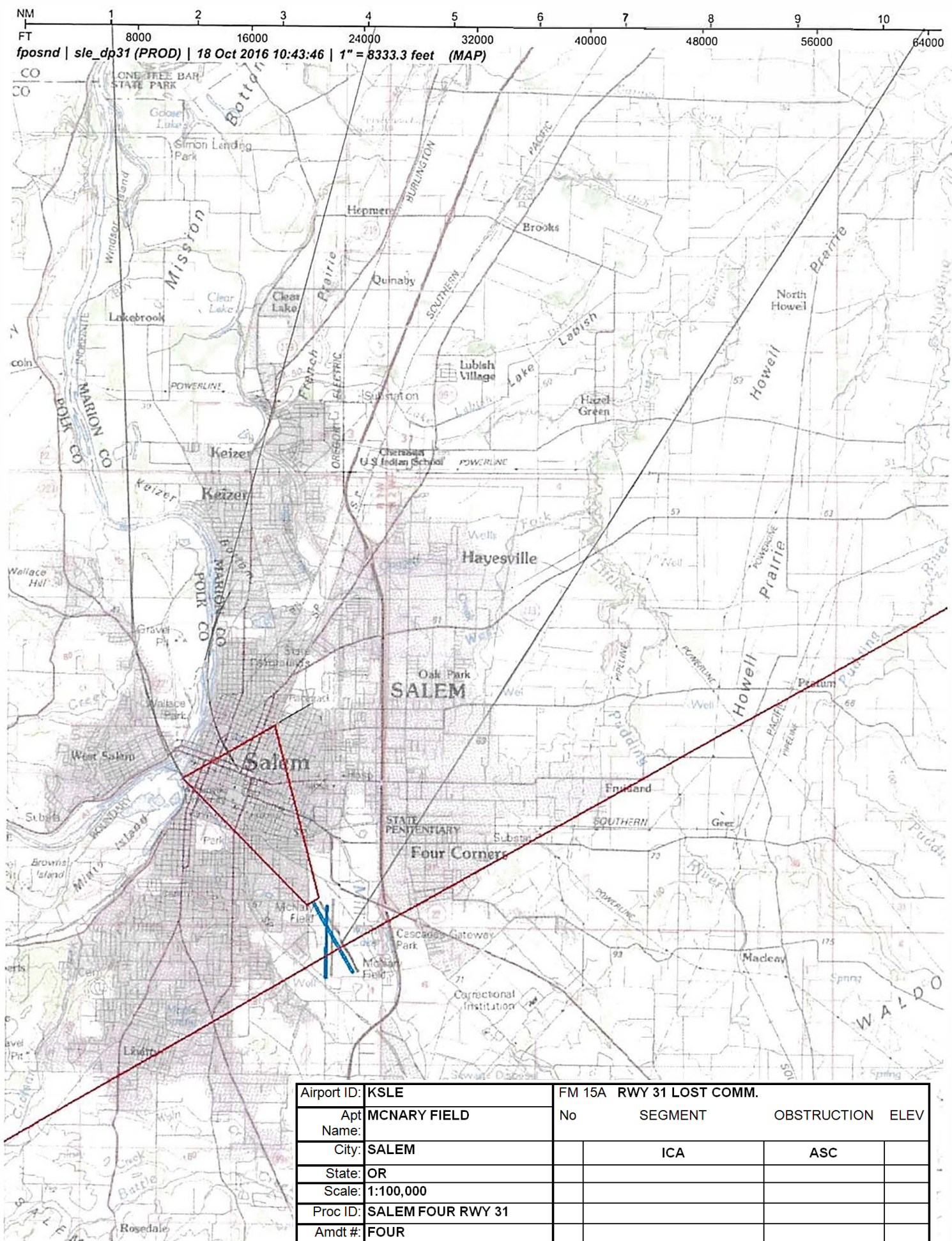


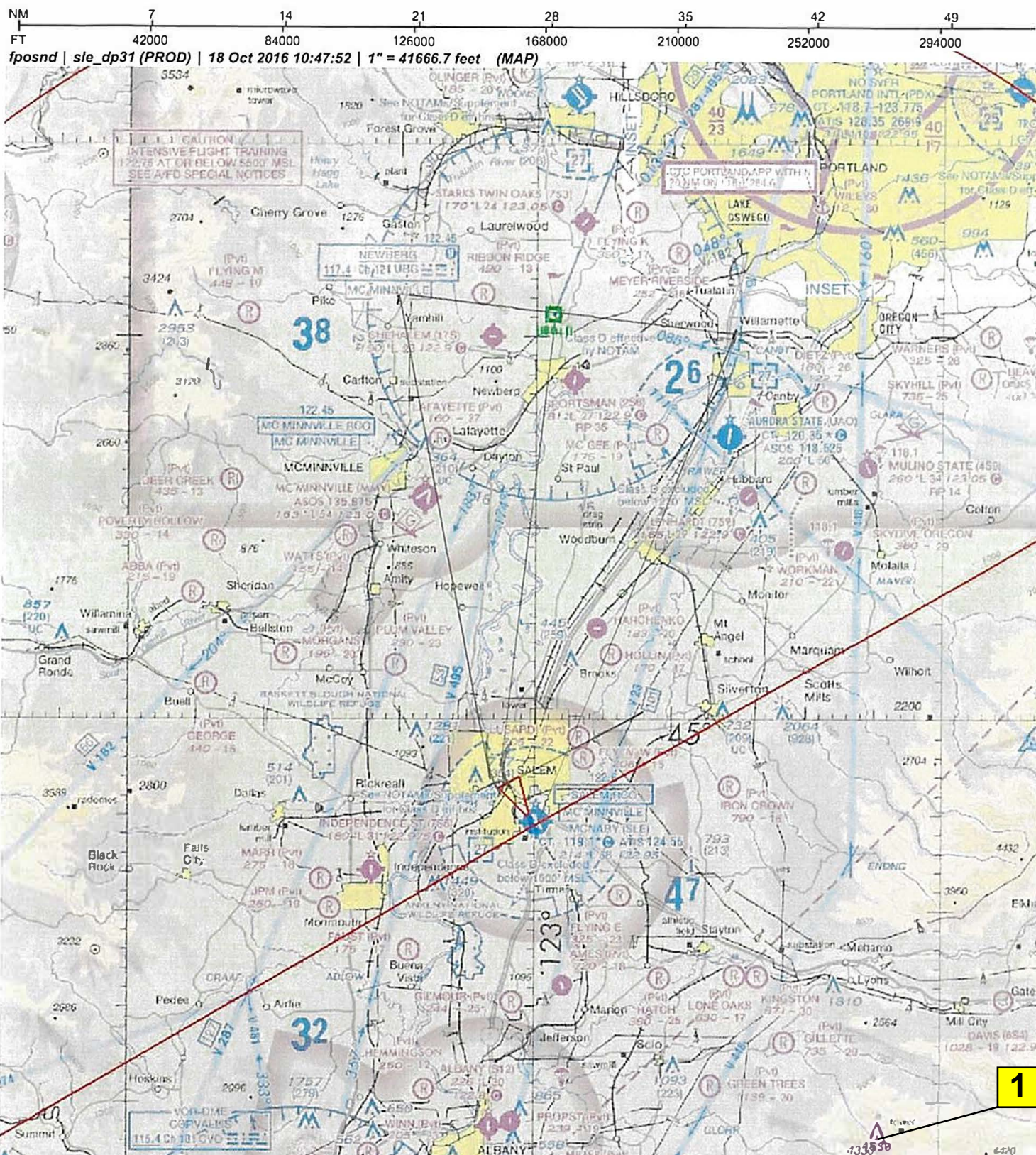


Airport ID:	KSLE	FM 15A			
Apt Name:	MCNARY FIELD	No	SEGMENT	OBSTRUCTION	ELEV
City:	SALEM		ICA	ASC	
State:	OR				
Scale:	1:100,000				
Proc ID:	SALEM FOUR RWY 31				
Amdt #:	FOUR				



Airport ID:	KSLE	FM 15A			
Apt Name:	MCNARY FIELD	No	SEGMENT	OBSTRUCTION	ELEV
City:	SALEM	1	CTA	AAO	4530
State:	OR				
Scale:	1:500,000				
Proc ID:	SALEM FOUR RWY 31				
Amdt #:	FOUR				



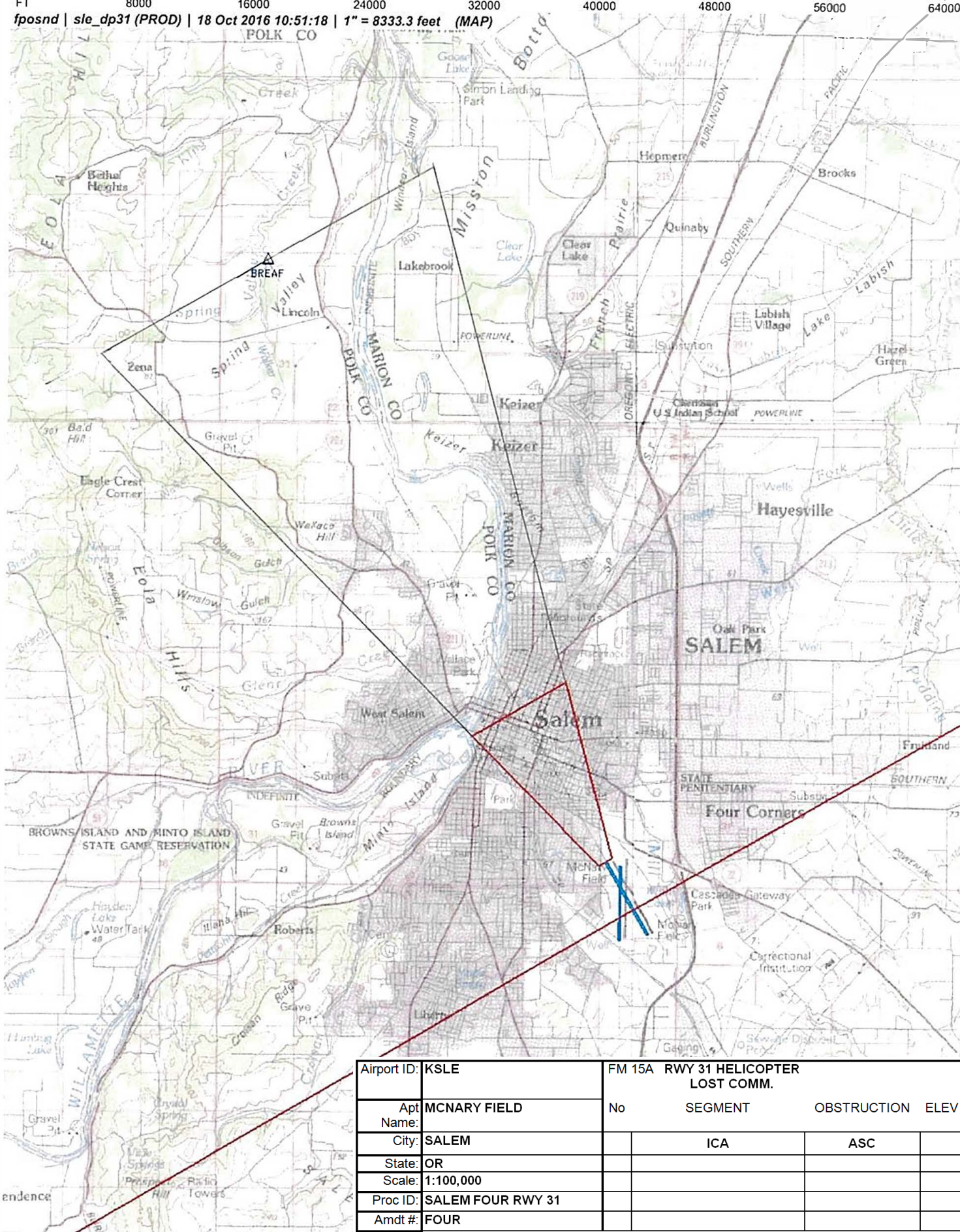


Airport ID:	KSLE	FM 15A RWY 31 LOST COMM.			
Apt Name:	MCNARY FIELD	No	SEGMENT	OBSTRUCTION	ELEV
City:	SALEM	1	CG/CTA	AAO	4530
State:	OR				
Scale:	1:500,000				
Proc ID:	SALEM FOUR RWY 31				
Amdt #:	FOUR				

NM 1 2 3 4 5 6 7 8 9 10
FT 8000 16000 24000 32000 40000 48000 56000 64000

fposnd | sle_dp31 (PROD) | 18 Oct 2016 10:51:18 | 1" = 8333.3 feet (MAP)

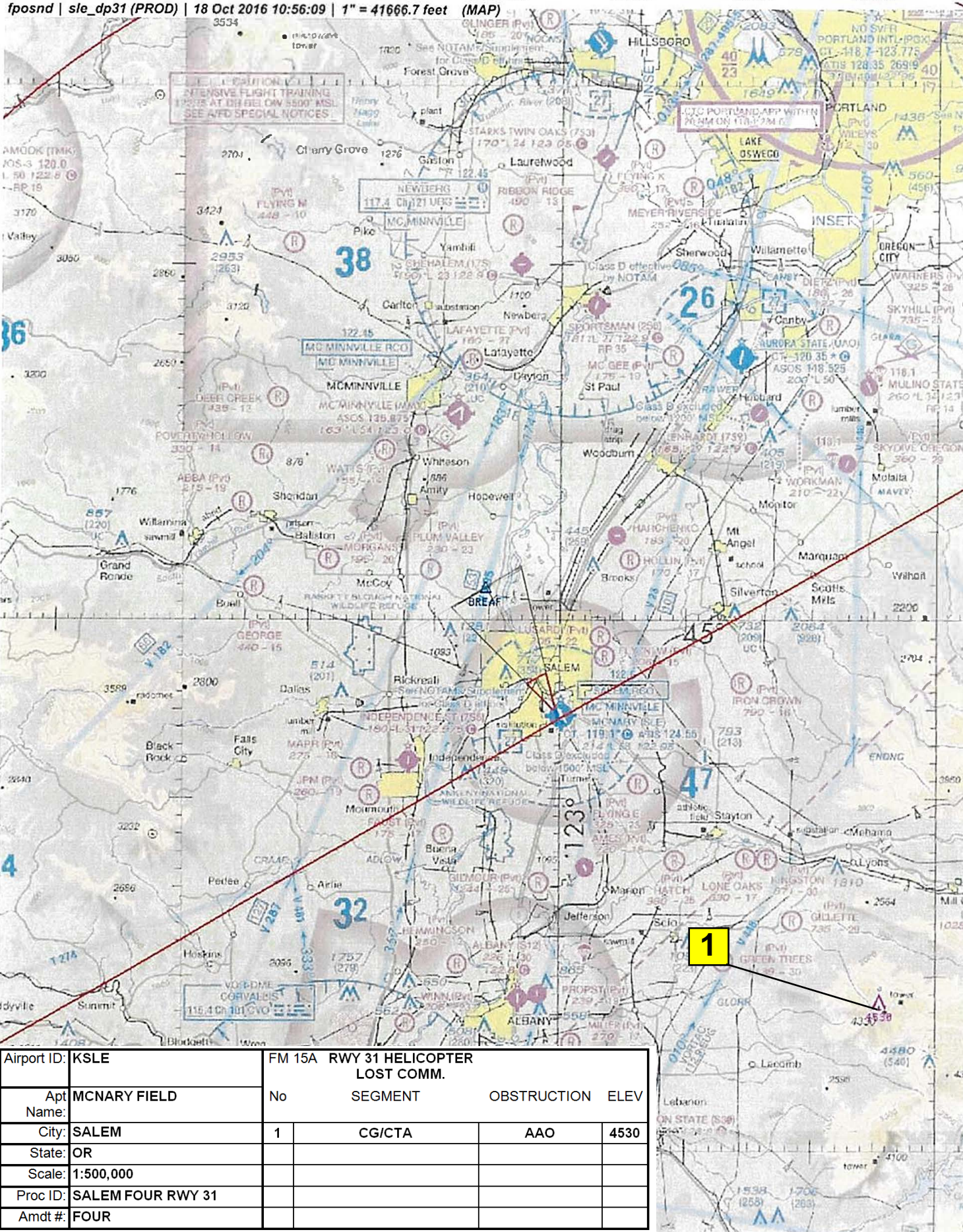
FOLK CO



Airport ID:	KSLE	FM 15A RWY 31 HELICOPTER LOST COMM.			
Apt Name:	MCNARY FIELD	No	SEGMENT	OBSTRUCTION	ELEV
City:	SALEM		ICA	ASC	
State:	OR				
Scale:	1:100,000				
Proc ID:	SALEM FOUR RWY 31				
Amdt #:	FOUR				

NM 7 14 21 28 35 42 49
 FT 42000 84000 126000 168000 210000 252000 294000

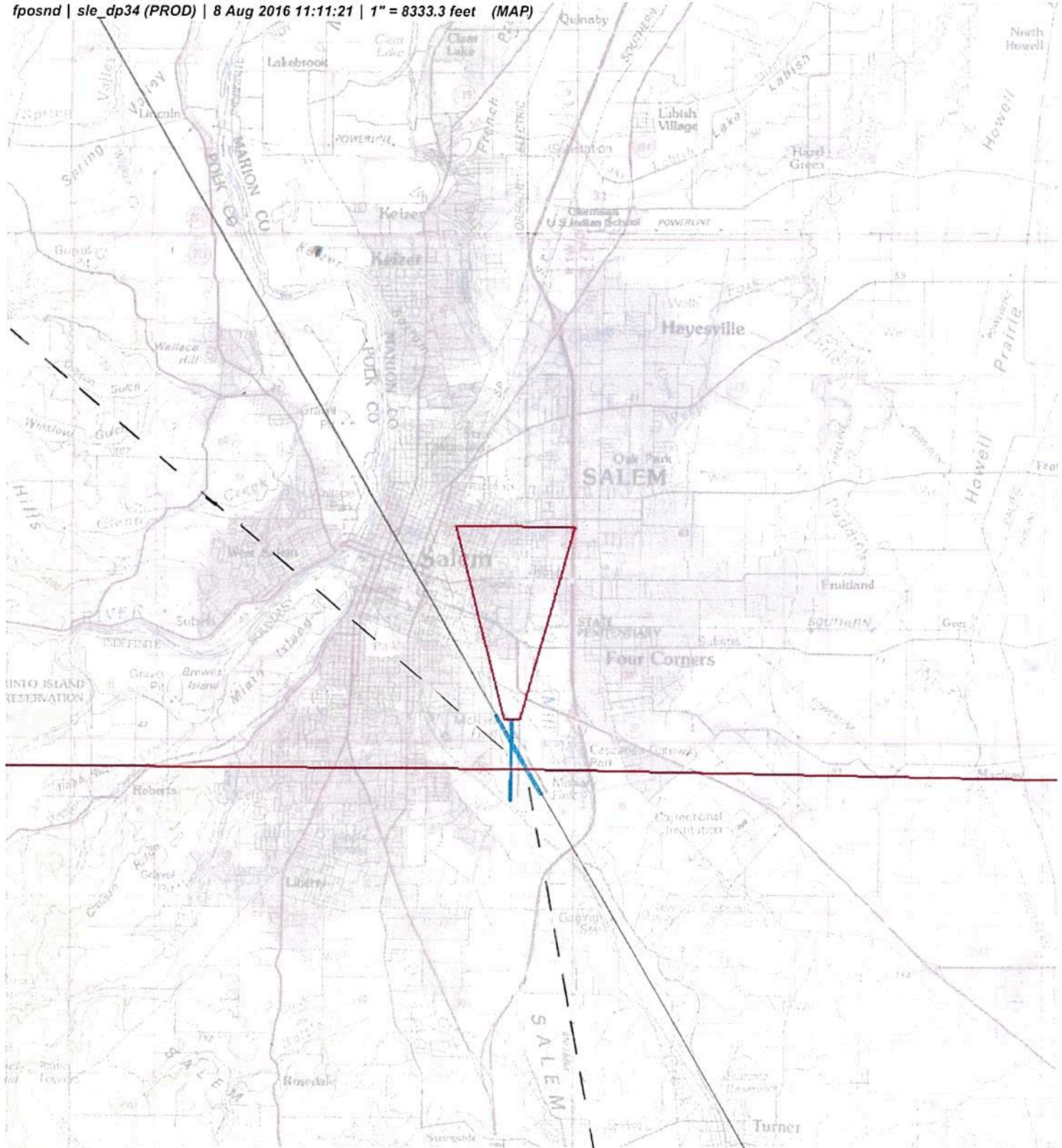
fposnd | sle_dp31 (PROD) | 18 Oct 2016 10:56:09 | 1" = 41666.7 feet (MAP)



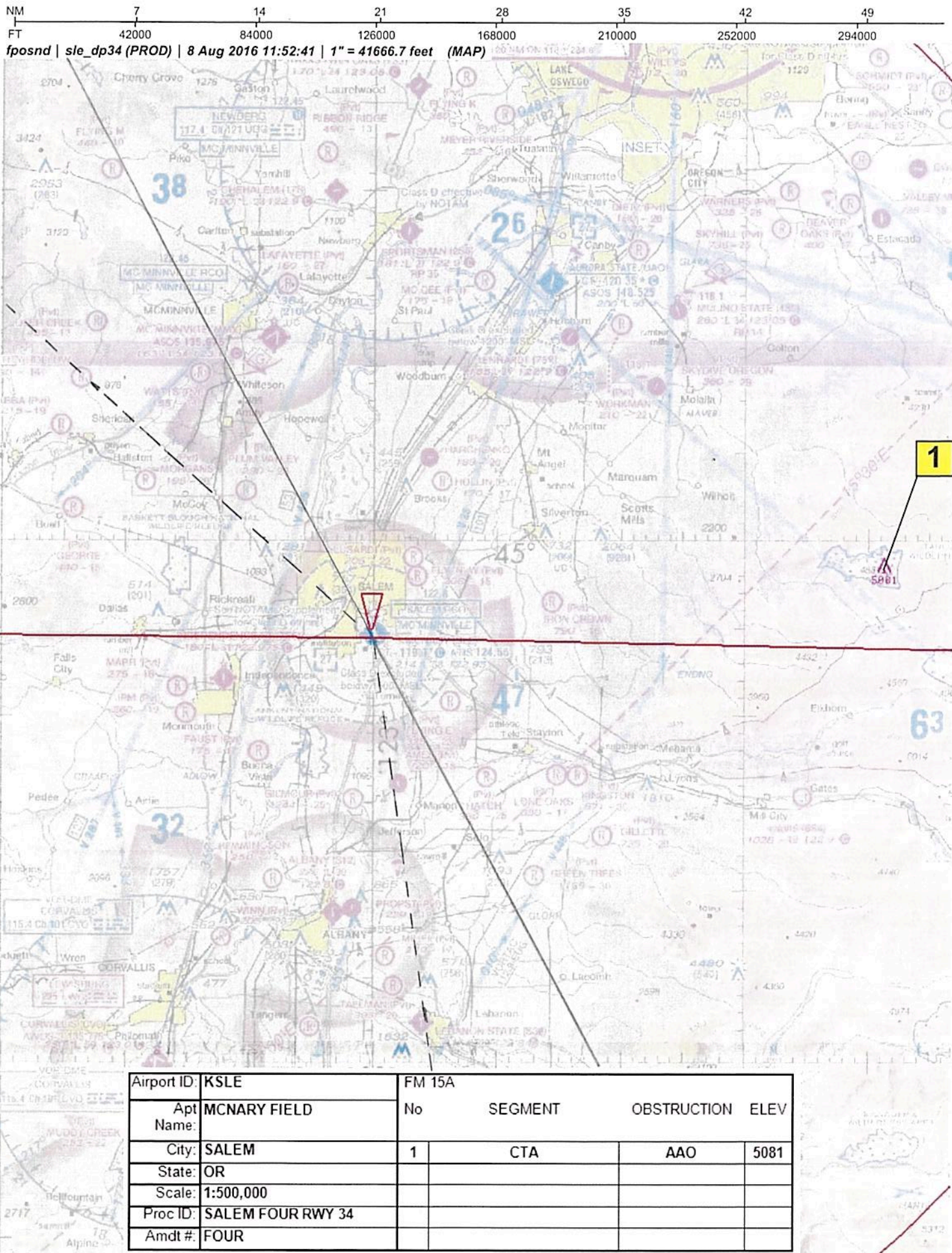
Airport ID:	KSLE	FM 15A RWY 31 HELICOPTER LOST COMM.			
Apt Name:	MCNARY FIELD	No	SEGMENT	OBSTRUCTION	ELEV
City:	SALEM	1	CG/CTA	AAO	4530
State:	OR				
Scale:	1:500,000				
Proc ID:	SALEM FOUR RWY 31				
Amdt #:	FOUR				

NM 1 2 3 4 5 6 7 8 9 10
FT 8000 16000 24000 32000 40000 48000 56000 64000

fposnd | sle_dp34 (PROD) | 8 Aug 2016 11:11:21 | 1" = 8333.3 feet (MAP)



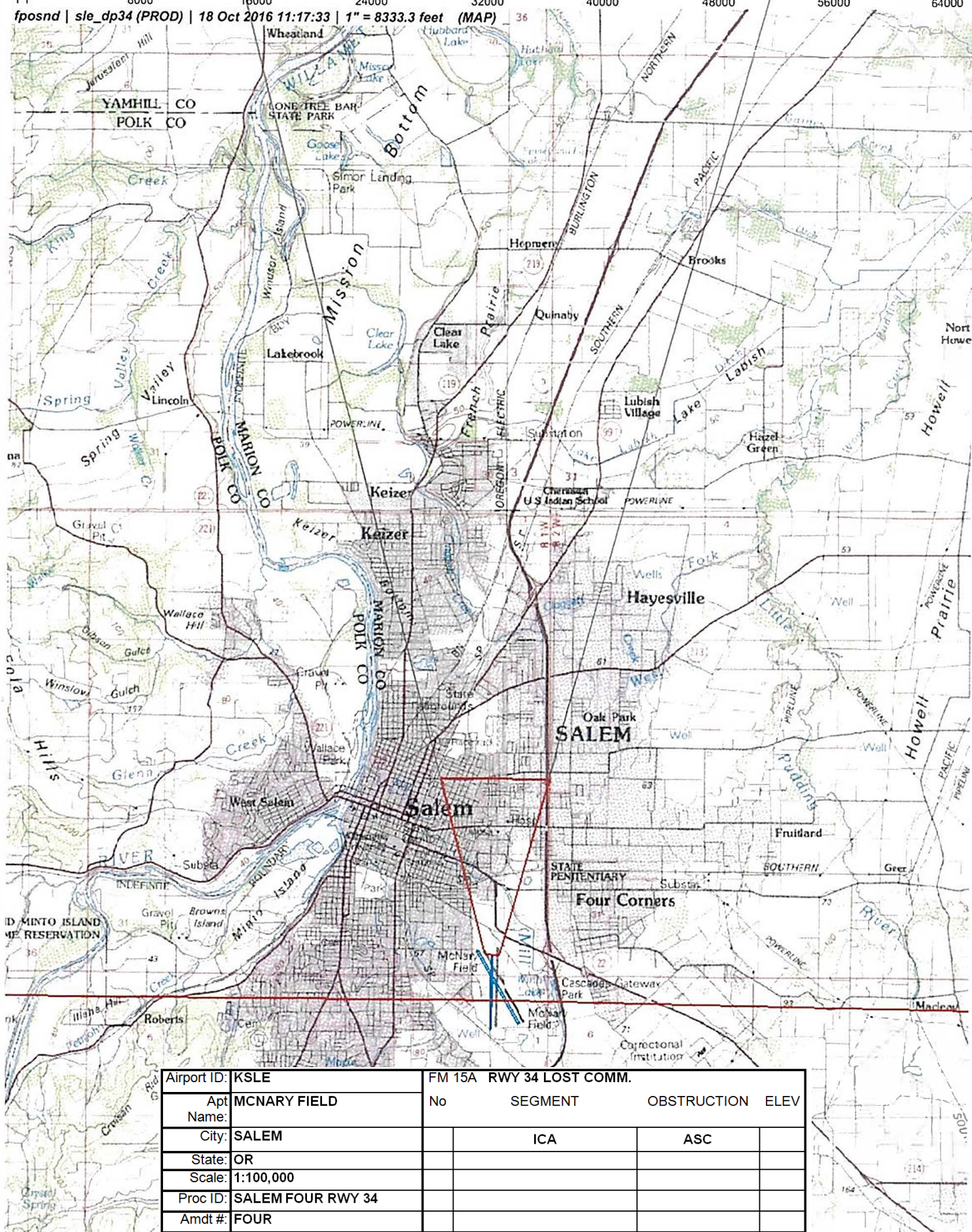
Airport ID:	KSLE	FM 15A			
Apt Name:	MCNARY FIELD	No	SEGMENT	OBSTRUCTION	ELEV
City:	SALEM		ICA	ASC	
State:	OR				
Scale:	1:100,000				
Proc ID:	SALEM FOUR RWY 34				
Amdt #:	FOUR				



Airport ID: KSLE		FM 15A			
Apt Name:	MCNARY FIELD	No	SEGMENT	OBSTRUCTION	ELEV
City:	SALEM	1	CTA	AAO	5081
State:	OR				
Scale:	1:500,000				
Proc ID:	SALEM FOUR RWY 34				
Amdt #:	FOUR				

NM 1 2 3 4 5 6 7 8 9 10
FT 8000 16000 24000 32000 40000 48000 56000 64000

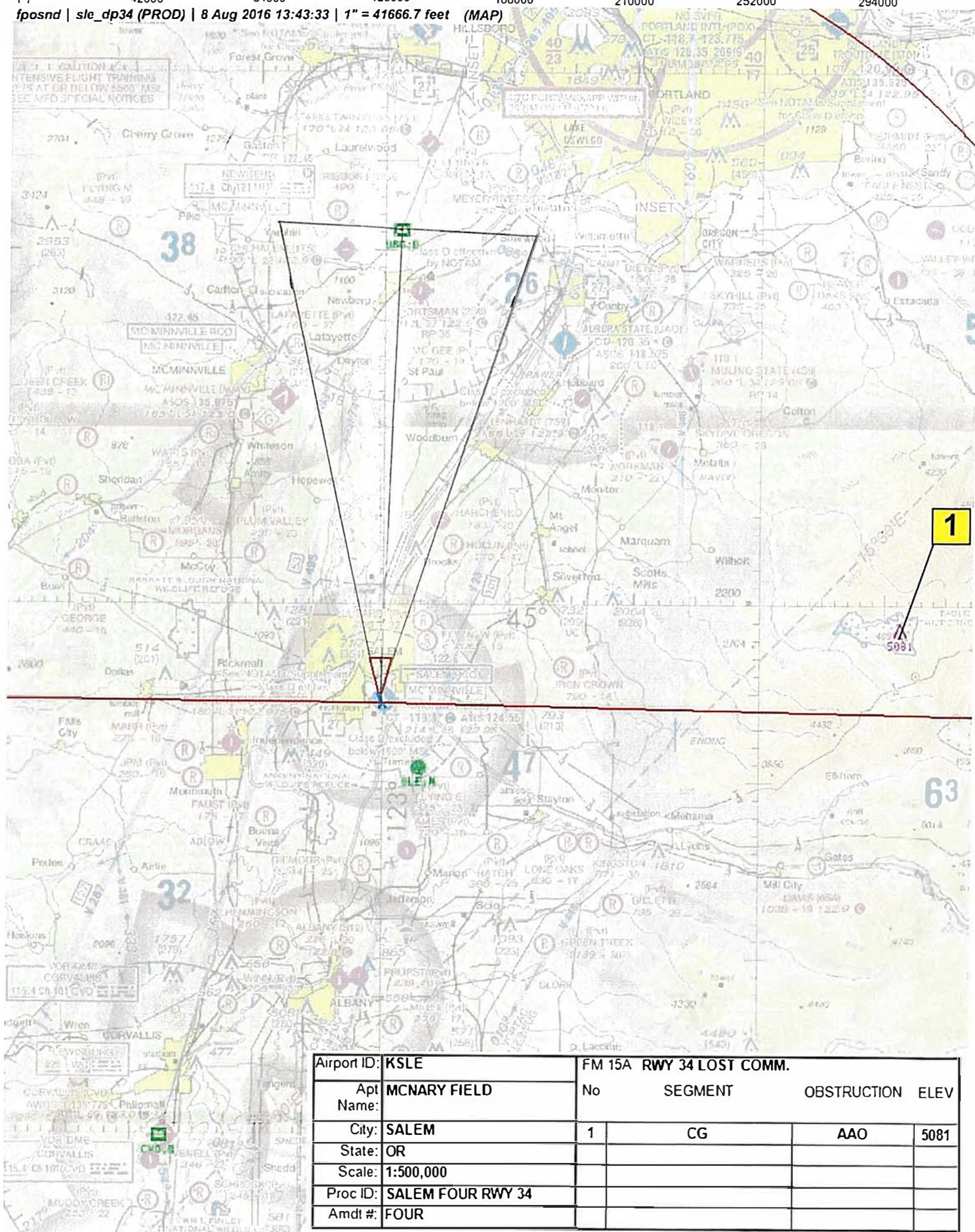
fposnd | sle_dp34 (PROD) | 18 Oct 2016 11:17:33 | 1" = 8333.3 feet (MAP)



Airport ID:	KSLE	FM 15A RWY 34 LOST COMM.			
Apt Name:	MCNARY FIELD	No	SEGMENT	OBSTRUCTION	ELEV
City:	SALEM		ICA	ASC	
State:	OR				
Scale:	1:100,000				
Proc ID:	SALEM FOUR RWY 34				
Amdt #:	FOUR				

NM 7 14 21 28 35 42 49
 FT 42000 84000 126000 168000 210000 252000 294000

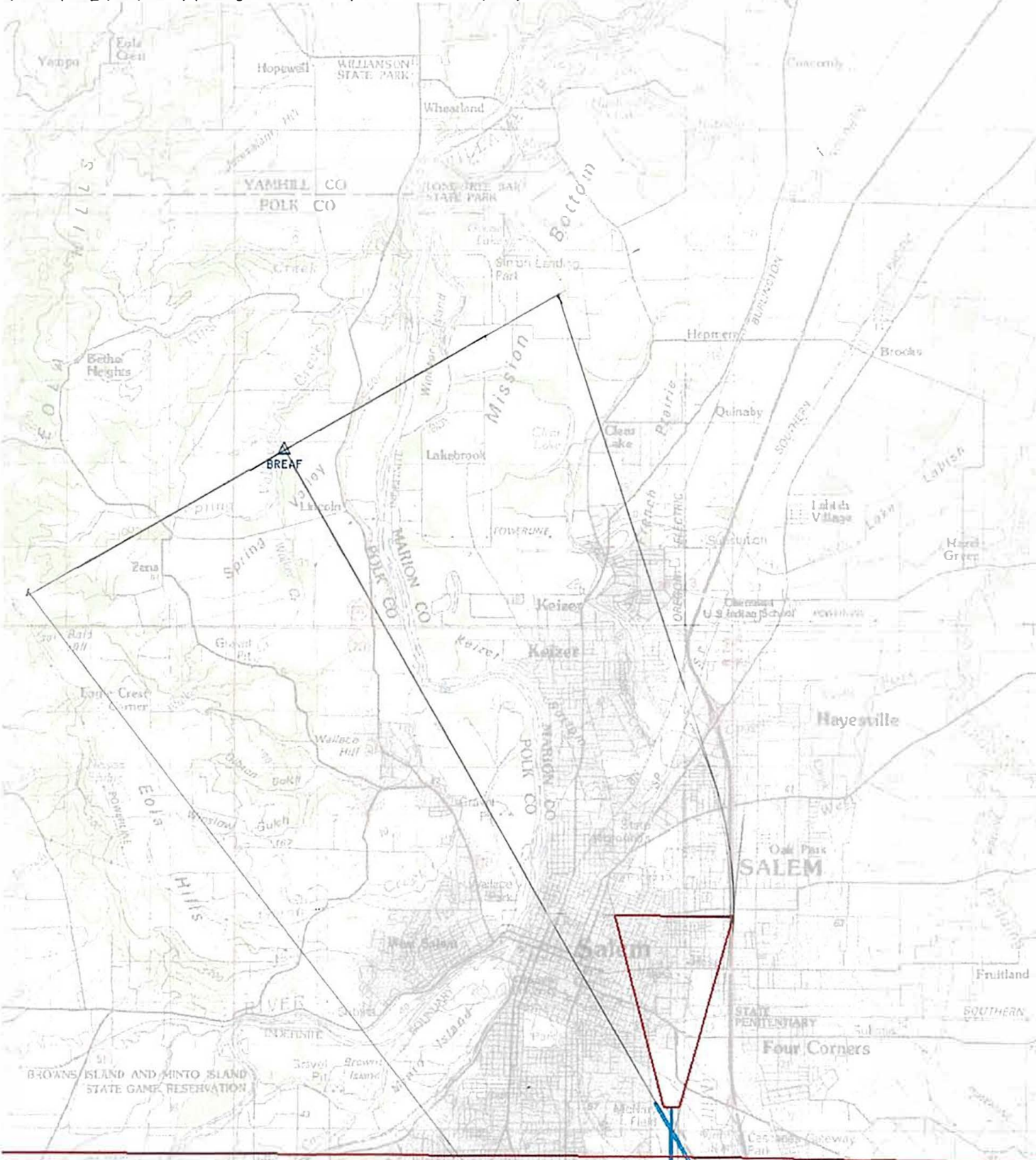
fposnd | sle_dp34 (PROD) | 8 Aug 2016 13:43:33 | 1" = 41666.7 feet (MAP)



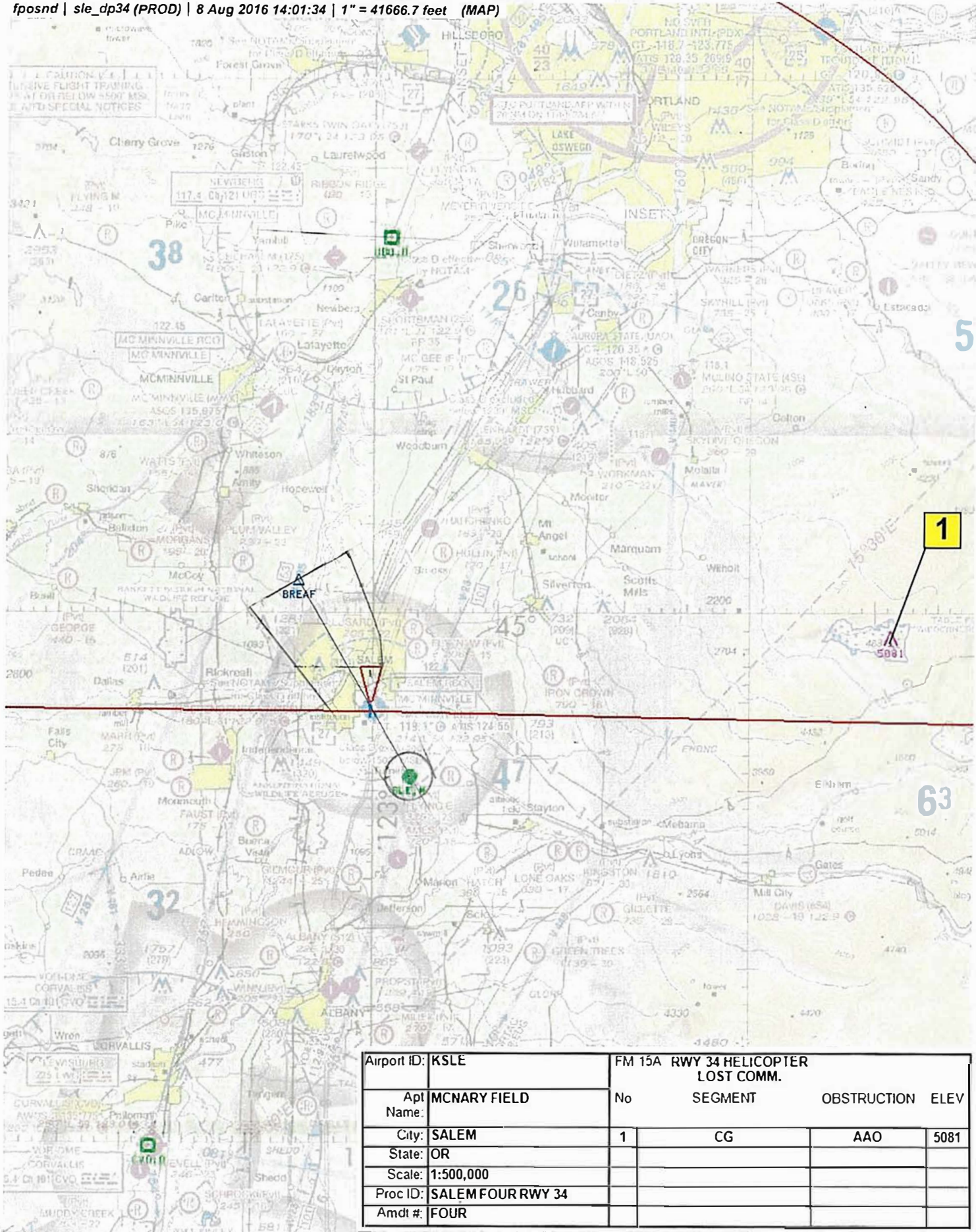
Airport ID: KSLE		FM 15A RWY 34 LOST COMM.			
Apt Name:	MCNARY FIELD	No	SEGMENT	OBSTRUCTION	ELEV
City:	SALEM	1	CG	AAO	5081
State:	OR				
Scale:	1:500,000				
Proc ID:	SALEM FOUR RWY 34				
Amdt #:	FOUR				

NM 1 2 3 4 5 6 7 8 9 10
FT 8000 16000 24000 32000 40000 48000 56000 64000

fposnd | sle_dp34 (PROD) | 8 Aug 2016 13:54:22 | 1" = 8333.3 feet (MAP)



Airport ID	KSLE	FM 15A RWY 34 HELICOPTER LOST COMM.			
Apt Name	MCNARY FIELD	No	SEGMENT	OBSTRUCTION	ELEV
Cty	SALEM		ICA	ASC	
State	OR				
Scale	1:100,000				
Proc ID	SALEM FOUR RWY 34				
Amdt #	FOUR				



Airport ID:	KSLE	FM 15A RWY 34 HELICOPTER LOST COMM.			
Apt Name:	MCNARY FIELD	No	SEGMENT	OBSTRUCTION	ELEV
City:	SALEM	1	CG	AAO	5081
State:	OR				
Scale:	1:500,000				
Proc ID:	SALEM FOUR RWY 34				
Amdt #:	FOUR				

RAPT Consensus Form

Date: 5/21/2015

Airport Name: McNary Field

ICAO: KSLE State: OR

Project Request: Request to remove the Outer Marker (OM) from charting, database, and publication.


Project Request Approved: ☒
Comments:

Disapproved: ☐ (see comments)

Scope of Project: Request from SADC to remove the OM from charting, databases, and publication. The LOM will need to be changed to an NDB and renamed with a new identifier. The removal of the OM will need amendment to the following procedures: ILS OR LOC RWY 31, LOC BC RWY 13, and LOC/DME RWY 31.

Priority Assigned: 3

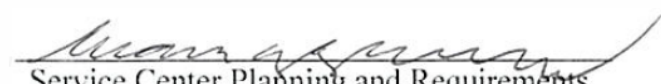
Project Tracking Number:


Service Center Flight Procedures Team


Service Center Air Traffic Operations Support


Flight Standards Division NextGen Branch


Airports Division


Service Center Planning and Requirements Group

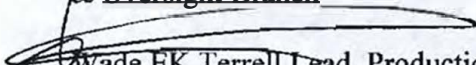


Federal Aviation Administration

Memorandum

Date: JUN 23 2011

To: Leslie H. Smith, Manager, Flight Technologies and
Procedures Division
THRU: Danny E. Hamilton, Manager, Flight Procedure Implementation
& Oversight Branch

From:  Wade EK Terrell Lead, Production Integration Coordination Team
AJV-34

Subject: ACTION: Approval Request

TAKEOFF /DEPARTURE PROCEDURE RWY 16, McNary Field, Salem, OR (KSLE)

Climb gradient exceeds 500 ft per NM, 8260.46d, Para 2-1d(2).

Request approval for the following climb gradient in excess of 500 feet per NM for the TAKEOFF MINIMUMS AND OBSTACLE DEPARTURE PROCEDURES (ODP), from runway 16.

The computed climb gradient is 570 ft per NM to an altitude 886.4 ft above airport elevation.
The obstacle driving this climb gradient is a 426 ft MSL tree (KSLE0084).
The obstacle driving the climb to altitude is a 839 ft tree (AA1).

Request approval, to publish a minimum climb gradient of 570 ft per NM to 1100 ft, to avoid 40:1 obstacle penetrations.

It is not possible to redesign this route to avoid the penetrations without significant impact to the flow of air traffic in the Salem Oregon area. Additionally, this departure is offered from three other runways, with lower climb gradient for aircraft that can not adhere to 570 ft per NM.

Please respond as soon as possible.

Attachment



Federal Aviation Administration

Memorandum

Date:

To: Manager, Production Integration Team, AJV-34

From: Manager, Flight Technologies and Procedures Division, AFS-40

Prepared by: Flight Procedure Implementation & Oversight Branch, AFS-460

Subject: Approval Request; AJV-34 Memorandum Dated 06/23/2011

Digitally signed by Robert
Ruiz
DN: cn=Robert Ruiz,
o=Flight Technologies
and Procedures Division,
AFS-402, ou=AFS-400,
email=Robert.Ruiz@faa.g
ov, c=US
Date: 2011.07.21 14:35:03
-04'00'

SIGN HERE

Your request to utilize a climb gradient(s) of 570 feet per NM on the "TAKEOFF MINIMUMS AND OBSTACLE DEPARTURE PROCEDURES (ODP), AMDT 8" for RWY 16 at McNary Field, Salem, OR. was discussed at Flight Standards' Procedure Review Board (PRB) and is approved.

Please direct all inquiries to Danny E. Hamilton, AFS-460, at (405) 954-9359.

Attachments

cc:

AJV-34

ANM-220

AFS-400/410/420/440/460/470

**DEPARTMENT OF TRANSPORTATION
FEDERAL AVIATION ADMINISTRATION
Instrument Flight Procedures Environmental Processing Form**

**This form is intended to streamline the environmental processing for
ONLY the Instrument Flight Procedure actions listed below**

• Section A is to be completed by the Requestor who provides all the relevant information and attachments for environmental analysis

• Section B is to be completed by the Operations Support Group (OSG) Environmental Specialist.

Airport Name and State/ICAO: McNary Field Airport, Oregon/KSLE

Instrument Flight Procedure(s): ILS or LOC Z RWY31; LOC Y RWY31; LOC/DME BC RWY13; Textural DP; SALEM FOUR

Requestor Name and Phone Number: Vic Zembruski 425-917-6724
FPT Tracking #16-817

Additional Procedures: (List additional IFPs below or insert list as an additional page in this file)

SECTION A – FOR REQUESTOR USE ONLY

Does the requested procedure include the following? (check all that apply):

Advisory Actions (FAA Order 1050.1F, Paragraph 2-1.2)

- ☐ Diverse Vectoring Areas (DVA) without a prescribed heading
- ☐ Terminal Arrival Areas (excluding Initial Segments)

If the requested procedure change is limited to ONLY the Advisory Actions listed above, no further environmental review/documentation is required. Please forward package to Environmental Specialist.

New or Revised Air Traffic Control Procedures (Paragraph 5-6.5i)

- ☐ Changes to and/or additional Lines of Minimum
- ☐ Altitude increases
- ☐ IFR Takeoff Minimums and (Obstacle) Departure Procedure:
 - Only close in obstacle notes
- ☐ Minimum Safe Altitudes

Emergency Actions (Paragraph 5-6.5j)

- ☐ Missed approaches and/or Missed approach holding patterns

**DEPARTMENT OF TRANSPORTATION
FEDERAL AVIATION ADMINISTRATION
Instrument Flight Procedures Environmental Processing Form**

☐ Changes to circling areas

☐ Arrival holding patterns, not including Hold in Lieu of a Procedure Turn

Publication Actions (Paragraph 5-6.5k)

☒ Name changes (Airport, Fix, Procedure, etc.)

☐ Adding, amending, removing notes to procedures

☐ Magnetic Variation (MagVar) adjustments

☐ Visual Climb Over Airport (VCOA) without a route

☐ Coding changes with no track/altitude changes

☐ Cancellation of IFPs not currently being flown

Note: Please include any airspace modeling output and charts, drawings, etc that will help explain the actions being taken
The Runway 31 Outer Marker (OM) will be decommissioned. Fix TURNO will be recharacterized from a Localizer to a Non-Directional Beacon.

SECTION B - FOR OSG ENVIRONMENTAL PROTECTION SPECIALIST USE ONLY

FAA Order 1050.1F categorical exclusions that apply to the instrument flight procedure actions listed in Section A:

☐ 5-6.5 i. Establishment of new or revised air traffic control procedures conducted at 3,000 feet or more above ground level (AGL); procedures conducted below 3,000 feet AGL that do not cause traffic to be routinely routed over noise sensitive areas; modifications to currently approved procedures conducted below 3,000 feet AGL that do not significantly increase noise over noise sensitive areas; and increases in minimum altitudes and landing minima. For modifications to air traffic procedures at or above 3,000 feet AGL, the Noise Screening Tool (NST) or other FAA-approved environmental screening methodology should be applied.

☐ 5-6.5 j. Implementation of procedures to respond to emergency air or ground safety needs, accidents, or natural events with no reasonably foreseeable long-term adverse impacts.

☒ 5-6.5 k. Publication of existing air traffic control procedures that do not essentially change existing tracks, create new tracks, change altitude, or change concentration of aircraft on these tracks.

CATEGORICAL EXCLUSION DETERMINATION:

The applicability of Categorical Exclusion 5-6.5 k for the proposed FAA procedure described above provides the appropriate exclusion from further environmental review based on the following determination as outlined in FAA Order 1050.1F regarding a Categorical Exclusions' conditions and Extraordinary Circumstances:

1. The procedure action clearly fits within the definition of one or more of the categories of excludable actions listed in FAA Order 1050.1F, Chapter 5-6.5 (Categorical Exclusions for Procedural Actions).
2. The action is not a smaller subset of a larger action.

**DEPARTMENT OF TRANSPORTATION
FEDERAL AVIATION ADMINISTRATION**

Instrument Flight Procedures Environmental Processing Form

3. No extraordinary circumstances exist based on the absence of the extraordinary circumstances listed in FAA Order 1050.1F, Paragraph 5-2.

STATEMENT OF DETERMINATION: The FAA has reviewed the above described proposed action and it has been determined, by the undersigned, to be excluded from further environmental review in accordance with the provisions of FAA Order 1050.1, "Environmental Impacts: Policies and Procedures." The above-described proposed action is not expected to involve or result in any extraordinary circumstances as defined by FAA Order 1050.1F

BASIS OF DETERMINATION: This review was conducted in accordance with policies and procedures in Department of Transportation Order 5610.1, "Procedures for Considering Environmental Impacts" and FAA Order 1050.1.

Environmental Specialist Concurrence/Reviewed By:

Signed:  Date: 6/8/2016




Federal Aviation Administration

Memorandum

Date: JUN 01 2015

To: Kelly Dodge, Manager, Technical Operations, Seattle District, AJW-WR

From:  Christine Chesak, Manager, Requirements Team, Planning and Requirements Group, Service Area Decommissioning Committee Chairperson, Western Service Center, AJV-W38

Prepared by: Kevin Frisby, NISC Contract Support, Requirements Specialist, Requirements North Team, Planning and Requirements Group, Western Service Center, AJV-W38

Subject: Approval of the Discontinuance of the Outer Marker at Salem, Oregon

The Service Area Decommissioning Committee (SADC) completed the coordination process on the proposal to discontinue the Outer Marker at Salem Oregon. This change will require the LOM to be renamed and displayed as a Non-Directional Beacon. The SADC has determined there will be no impact to the NAS and has concurred with the proposal. The discontinuance date is January 05, 2017.

For more information, please contact Tuan H. Nguyen, Requirements Specialist, Requirements North Team, Planning and Requirements Group, SADC C0-Chairperson, Western Service Center, at 425-203-4623.

cc:

WWRI-PDX (Portland Group)
WWWR15-PDX (NW Oregon SSC)
AJV-W24 (Western FPT)
AJV-W3 (PRG)
AJW-3343 (FICO)

AJV-W2 (Western OSG)
AJW-W24 (Operations Engineering)
AJW-37 (AeroNav Services)
ALO-820 (Real Estate)

OLD FORM

