

Flight Procedure Tracking Form		Action: FLIGHT CHECK	Task Type: IAP	Date Open: 09/19/2014	Task #: 2014091930556402001	Request #: 20140919305564
Procedure: RNAV (GPS) RWY 34 AMDT 2			Airport ID: KGEY	Airport: SOUTH BIG HORN COUNTY		Reimbursable #: NO
City: GREYBULL	ST: WY	GPS #:	Estimated Chart Date: 10/12/2017		FICO #: 1187431	
Fac ID: N/A		Fac. Type:		Specialist: LIAM DONAHUE		
Procedure Review						
	Rec'd	Rel'd	Full Name	Comments		
Lead:	04/07/2017	06/05/2017	DONALD LANIER	QUALITY 4		
QA:	06/05/2017	06/05/2017	DONALD LANIER	CHECKED 6/28CTabaka		
Liaison:	06/05/2017	06/05/2017	MARY MCDONALD			
Procedure Comments:			Remark Type: INFORMATION			
<p>CONTACT: DON LANIER, AJV, 5431 MANAGER, 405.954-8242</p> <p>06/27/17: THIS IS AN UPDATED COPY OF THE FORM DEVELOPED ON 05/09/17.</p> <p>1. THE LNAV/VNAV AND LNAV MAPS WERE CHANGED FROM FB TO FO.</p>						

WAAS CH 77542 W34A	APP CRS 339°	Rwy Idg TDZE 3916 Apt Elev 3942
--	------------------------	---

RNAV (GPS) RWY 34

SOUTH BIG HORN COUNTY (GEY)

T Baro-VNAV NA when using Cowley/Lovell/Byron altimeter setting. For uncompensated Baro-VNAV systems, LNAV/VNAV NA below -26°C (-14°F) or above 51°C (124°F).
A DME/DME RNP-0.3 NA. When local altimeter setting not received, use Cowley/Lovell/Byron altimeter setting and increase LPV DA to 4253 feet and LNAV/VNAV DA to 4327 feet. Increase LPV and LNAV/VNAV visibility all Cats $\frac{3}{8}$ SM. Increase all MDAs 100 feet and LNAV visibility Cat B $\frac{1}{4}$ SM, Cats C/D $\frac{1}{2}$ SM and Circling Cat B $\frac{1}{4}$ SM. VDP NA with Cowley/Lovell/Byron altimeter setting.
***** -33°C

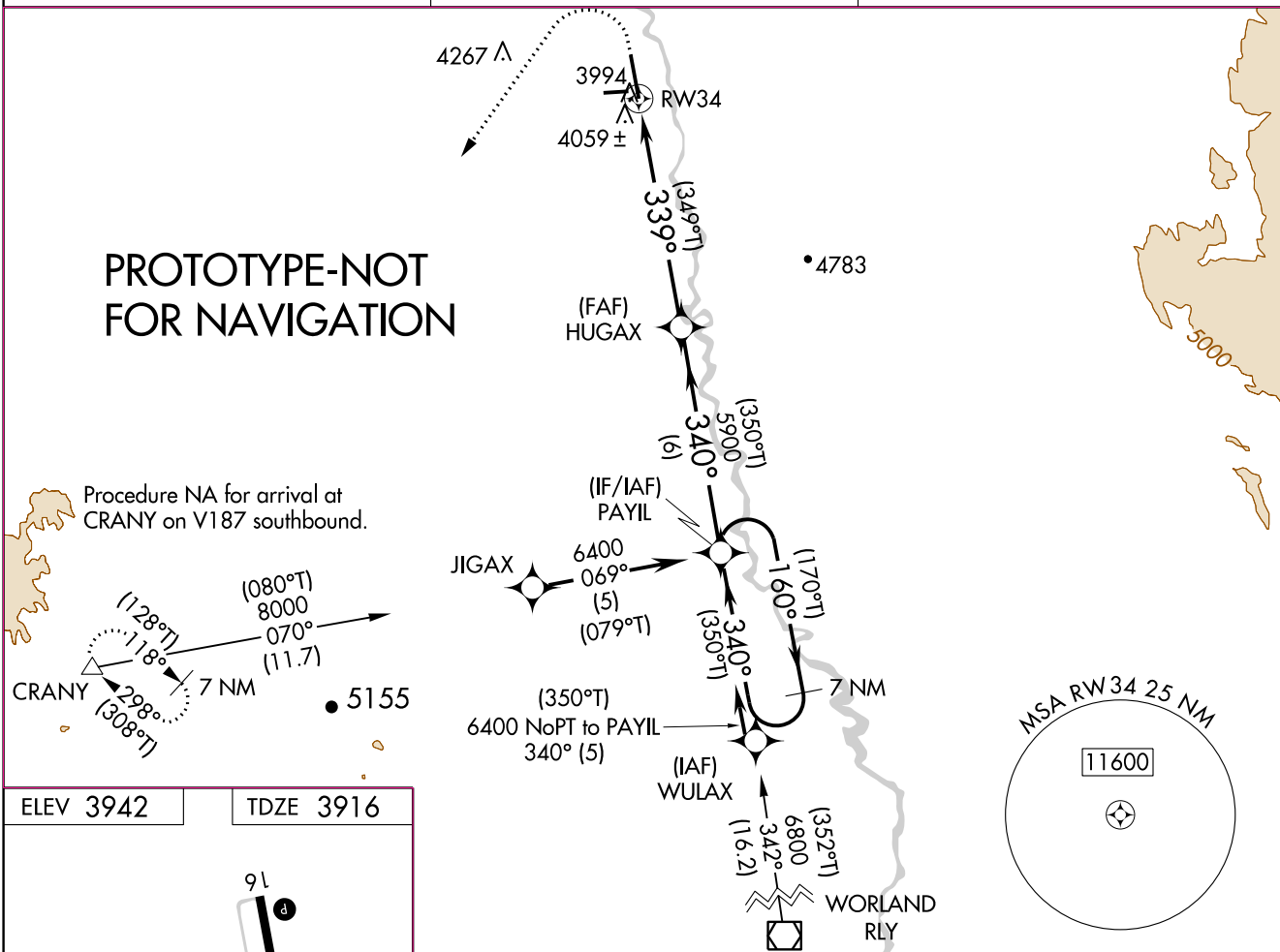
MISSED APPROACH: Climb to 4400 then climbing left turn to 9000 direct CRANY and hold, continue climb-in-hold to 9000.

ASOS
135.325

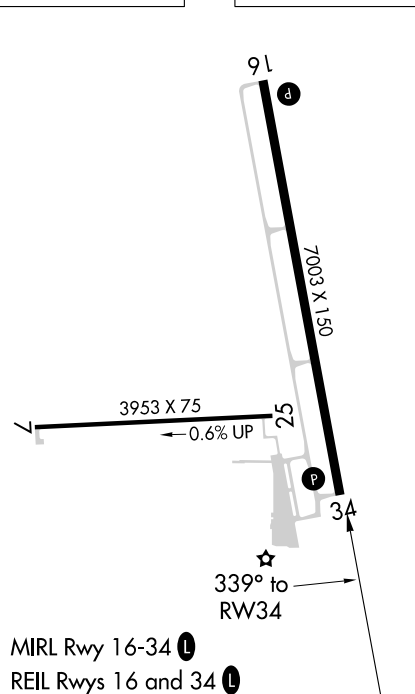
SALT LAKE CENTER
127.75 351.9

CTAF
122.90

**PROTOTYPE-NOT
FOR NAVIGATION**



ELEV 3942 TDZE 3916



4400 ↑	9000 ↖	CRANY △		
*LNAV only.				
*2.1 NM to RW34				
CATEGORY	A	B	C	D
LPV DA	4166- ³ / ₄		250 (300- ³ / ₄)	
LNAV/VNAV DA	4240-1		324 (300-1)	
LNAV MDA	4640-1	724 (700-1)	4640-2	724 (700-1)
CIRCLING	4640-1 698 (700-1)	4700-1 ¹ / ₄ 758 (800-1 ¹ / ₄)	5320-3 1378 (1400-3)	5460-3 1518 (1600-3)

INFORMATION ONLY

17117

RNAV (GPS) RWY 34

SOUTH BIG HORN COUNTY (GEY)

MISSED APPROACH: Climbing left turn to 9000 direct CRANY and hold, continue climb-in-hold 9000.

CTAF
122.9 L

27 APR 2017 to 25 MAY 2017

Procedure NA for arrival at
RLY VOR/DME on V319
southeast bound.

9000	CRANY	Descent angle NA.
------	-------	-------------------

Figure 10-1 illustrates a sample flight profile. The profile starts at a runway, ascends to 9000 feet, and then descends through waypoints RW34, WIPAL, HUGAX, and PAYIL. The descent angles are 336°, 335°, and 155° respectively. The altitudes at these waypoints are 5080, 5900, and 6400 feet. The distances between waypoints are 3.5 NM, 2.6 NM, and 6 NM. The final segment is a 7 NM Holding Pattern. A CRANY symbol is shown in the top left corner.

CATEGORY	A	B	C	D
LNAB MDA	4760-1 844 (900-1)	4760-1½ 844 (900-1¼)	4760-2½	844 (900-2½)
CIRCLING	4760-1¼	818 (900-1¼)	4760-2½ 818 (900-2½)	5220-3 1278 (1300-3)

SOUTH BIG HORN COUNTY (GEY)
RNAV (GPS) RWY 34

INFORMATION ONLY

SOUTH BIG HORN COUNTY, WY (KGEY)
RNAV (GPS) RWY 34 AMDT 2
1:500,000

1. FEEDER
AAO 5256 MSL

5. FEEDER
AAO 4515 MSL

7. INITIAL
AAO 4528 MSL

13. HOLD-IN-LIEU
AAO 4954 MSL

3. FEEDER
AAO 4725 MSL

16. MISSED LVL SFC
GRD 4926 MSL

15. LNAV MISSED PEN
GRD 4778 MSL

12. LNAV FINAL
AAO 4160 MSL

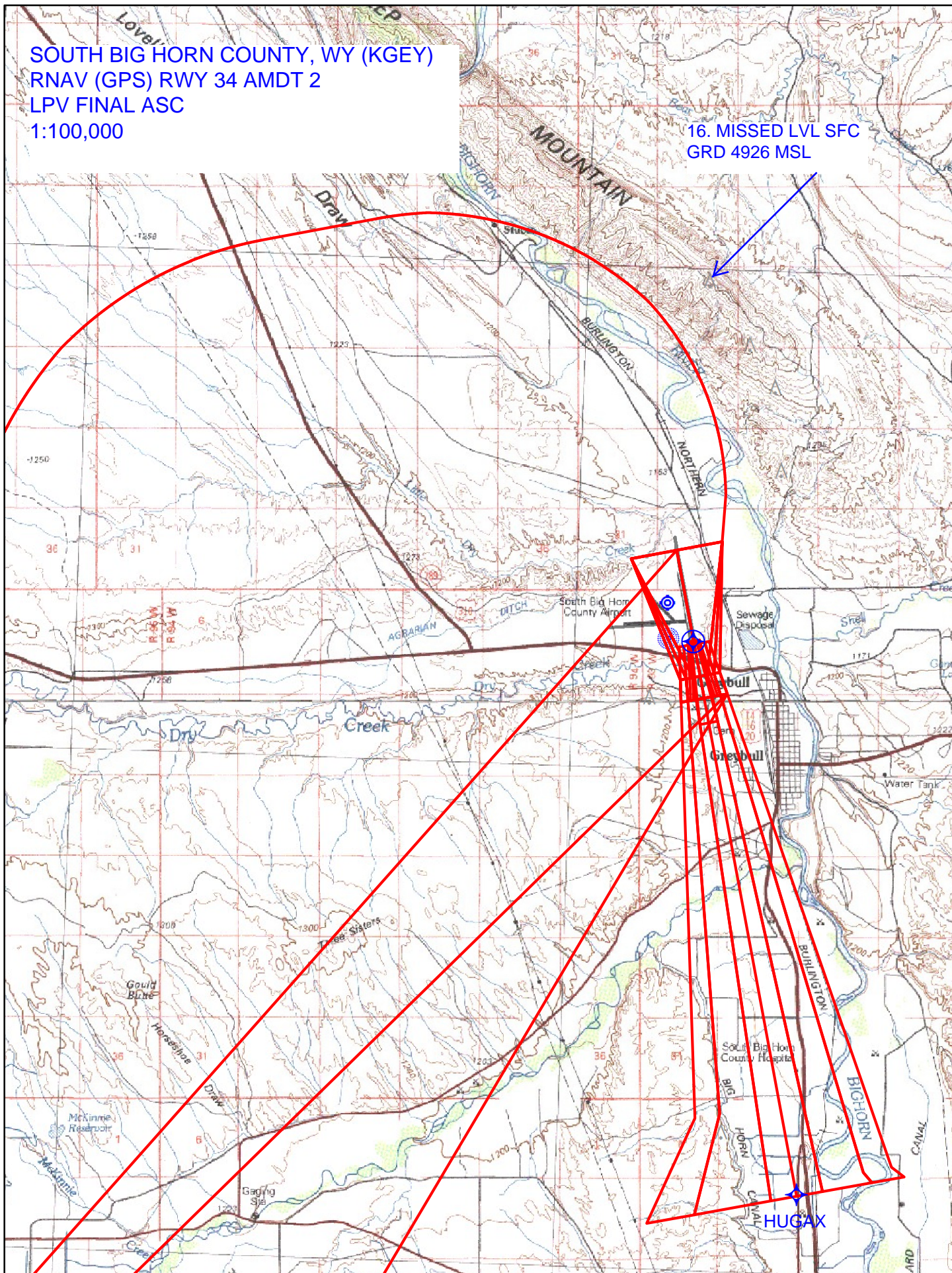
LNAV PARA 289
AAO 4380 MSL

9. INTERMEDIATE
AAO 4473 MSL

CLIMB-IN-HOLD
AAO 6431 MSL

SOUTH BIG HORN COUNTY, WY (KGEY)
RNAV (GPS) RWY 34 AMDT 2
LPV FINAL ASC
1:100,000

16. MISSED LVL SFC
GRD 4926 MSL



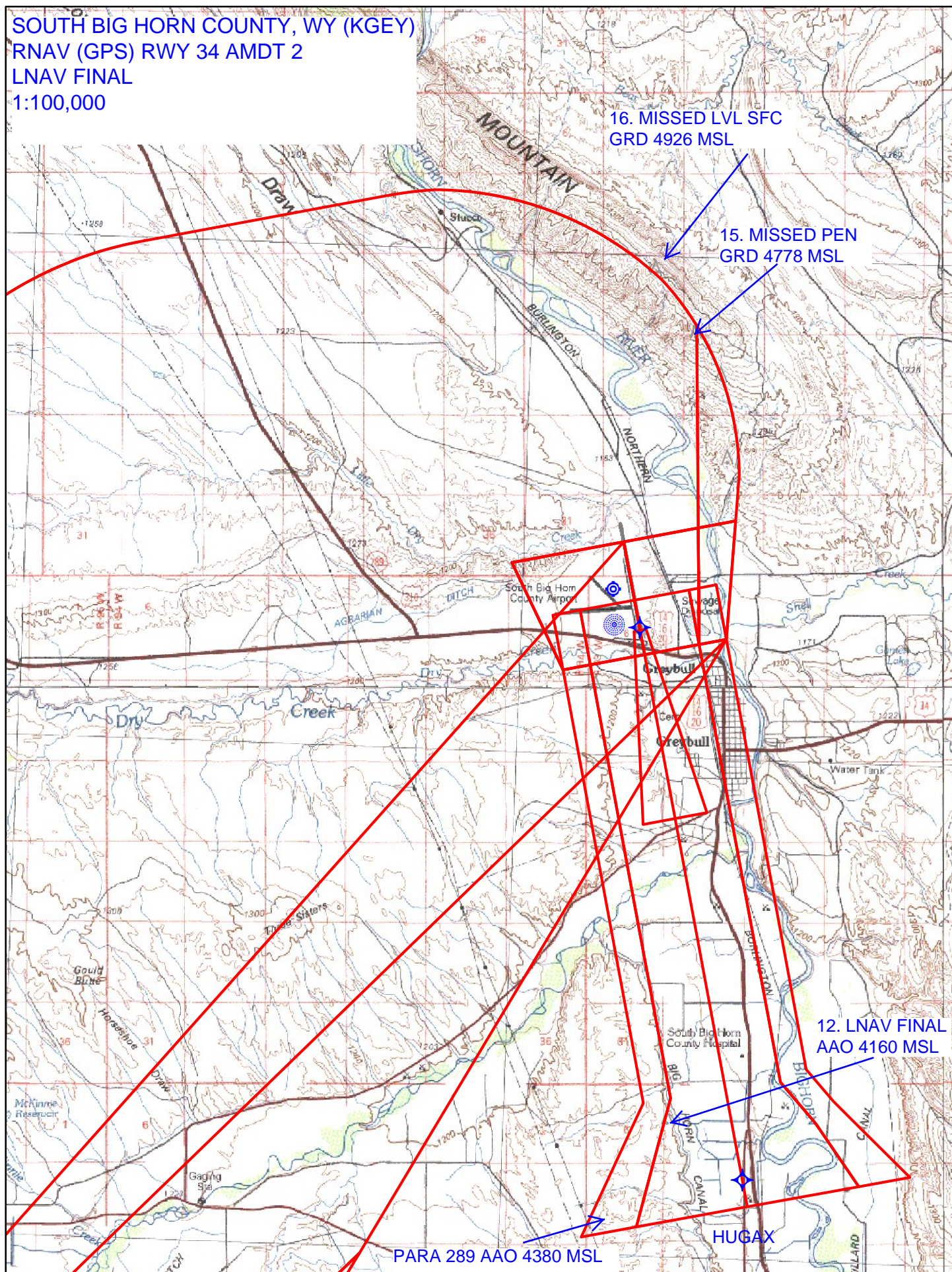
SOUTH BIG HORN COUNTY, WY (KGEY)
RNAV (GPS) RWY 34 AMDT 2
LNAV/VNAV FINAL
1:100,000

16. MISSED LVL SFC
GRD 4926 MSL

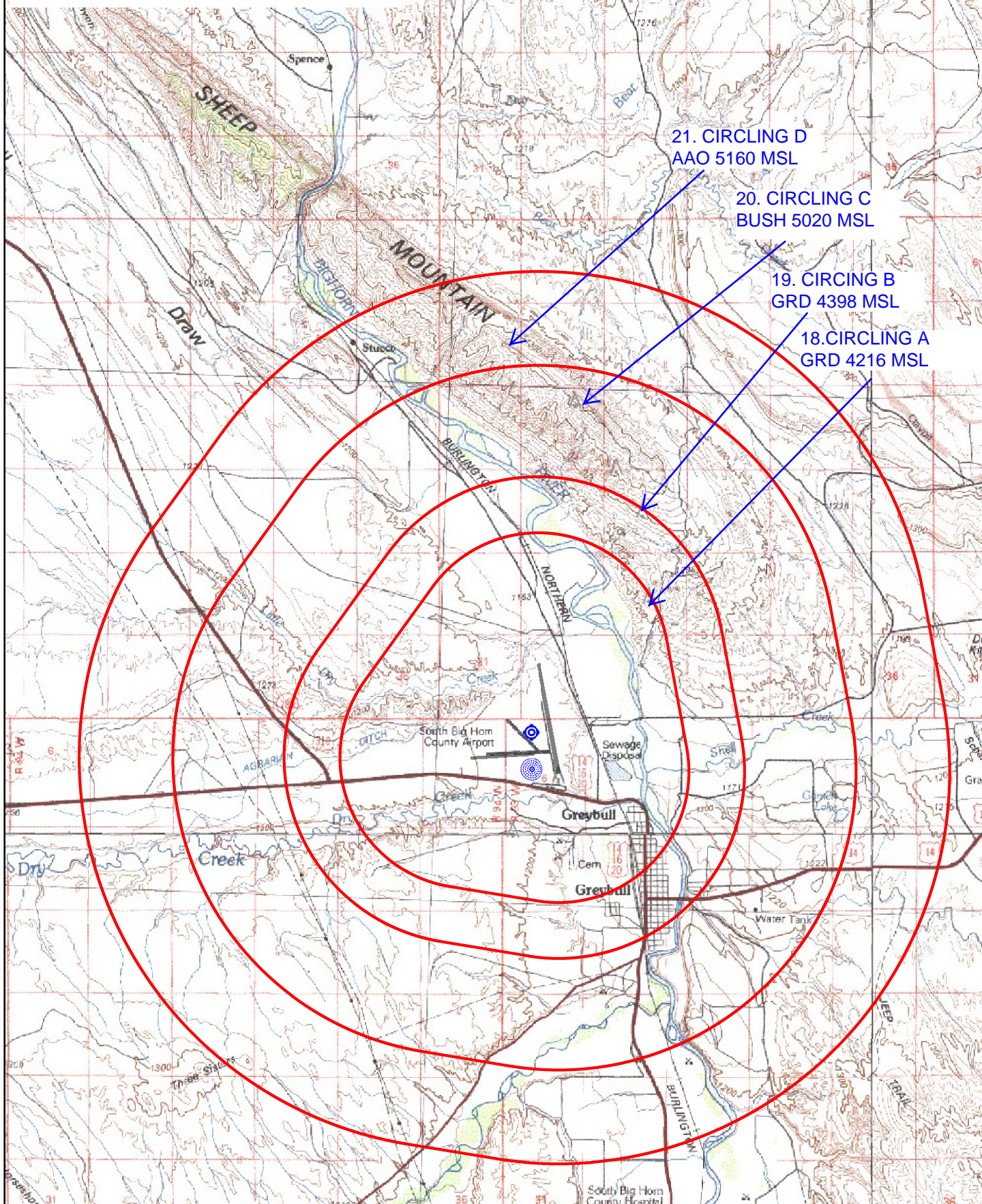
11. LNAV/VNAV FINAL
TREE 4059 MSL

HUGAX

SOUTH BIG HORN COUNTY, WY (KGEY)
RNAV (GPS) RWY 34 AMDT 2
LNAV FINAL
1:100,000



SOUTH BIG HORN COUNTY, WY
(KGEY) RNAV (GPS) RWY 34 AMDT 2
CIRCLING
1:100,000



TERMINAL AIRSPACE DATA REQUIREMENTS

City: GREYBULL Airport Name: SOUTH BIG HORN COUNTY Procedure: RNAV (GPS) RWY 34 Docket #:	State: WY ID: KGEY Amendment: 2
ALL DIST TO 1/100 NM; ELEV TO NEAREST FT; COORD TO 1/100 SEC; DEG TO 1/100 DG.	
1. Distance from THLD to 1000' point	3.25
2. Width of FINAL segment at 1000' point	1.20
3. True Course of FINAL segment containing 1000' point	349.49
4. High Terrain in FINAL segment containing 1000' point	3960
5. Distance from THLD to 1500' point	5.27
6. Width of FINAL segment at 1500' point	1.39
7. True Course of FINAL segment containing 1500' point	349.49
8. High Terrain in FINAL segment containing 1500' point	3960
9. Threshold Coordinates (if straight-in)	44 30 39.18 N / 108 04 35.13 W
10. ARP Coordinates	44 31 04.60 N / 108 04 58.80 W
11. Runway Approach End and distance furthest from ARP: Runway 16 Distance 0.71 NM	
12. FAF Coordinates	44 24 41.01 N / 108 03 02.25 W
Remarks:	