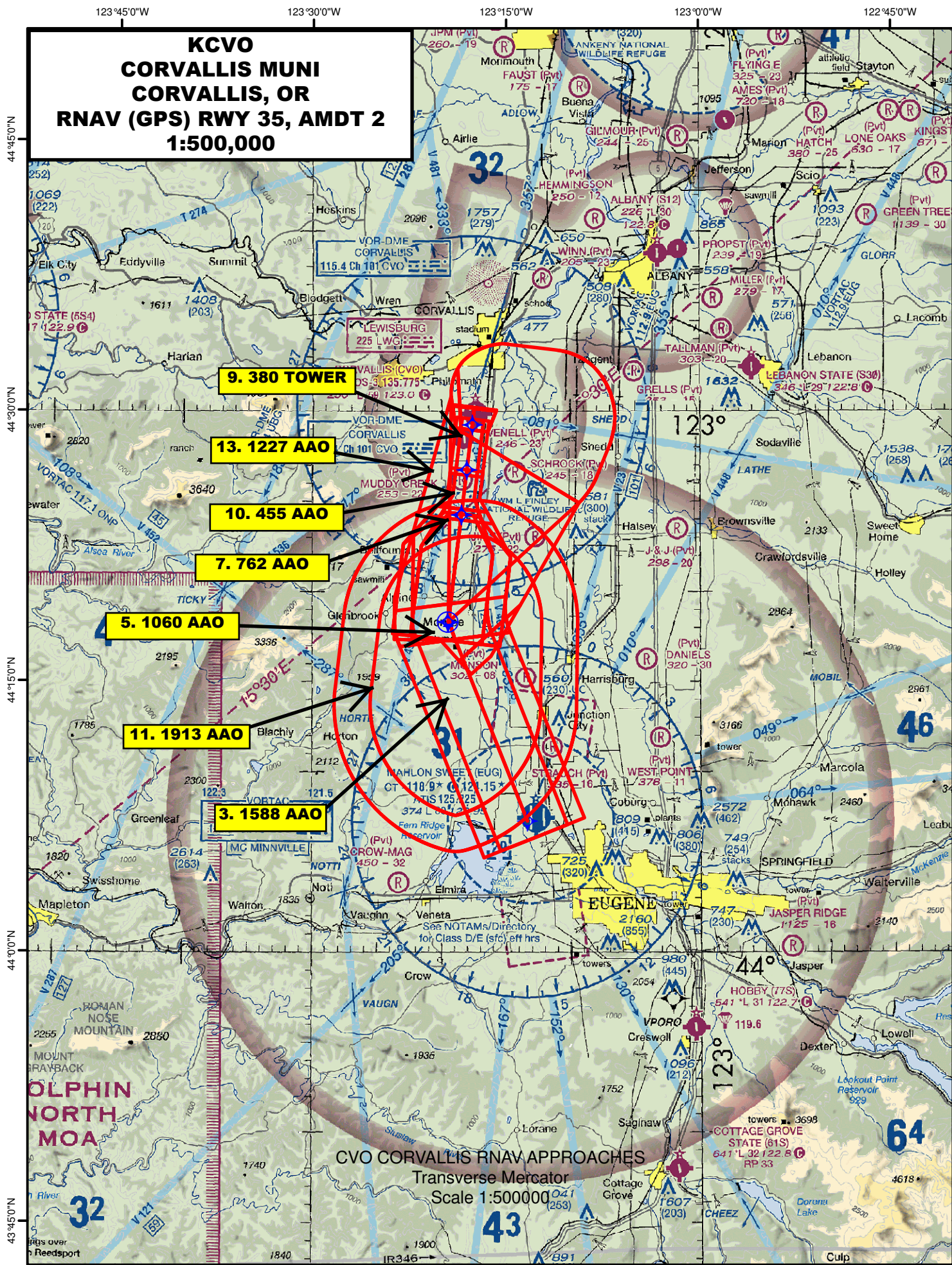



Flight Procedure Tracking Form		Action: FLIGHT CHECK	Task Type: IAP	Date Open: 09/19/2014	Task #: 2014091926747001001	Request #: 20140919267470
Procedure: APPROACH RNAV (GPS) RWY 35 AMDT 2			Airport ID: KCVO	Airport: CORVALLIS MUNI		Reimbursable #: NO
City: CORVALLIS	ST: OR	GPS #:	Estimated Chart Date: 07/21/2016		FICO #:	
Fac ID: N/A		Fac. Type:		Specialist: VICTOR BOONE		
Procedure Review						
	Rec'd	Rel'd	Full Name	Comments		
Lead:	01/29/2016			<div style="text-align: center;"> <div>QUALITY</div> <div>4</div> <div>CHECKED</div> </div> 7/26CTabaka		
QA:						
Liaison:						
Procedure Comments:			Remark Type: INFORMATION			
<p>ASSIGNED MAG/VAR: KCVO: OLD 18E - NEW 15E. PENDING DATA USED FOR KCVO AIRPORT. ACTIVE DATA USED FOR ALL NAVAIDS. DIGITAL PROCESS CONTACT: ALLAN WILL/JOHNNIE BAKER, LEAD, 405.954.6103/5148.</p> <p>06/26/16: THIS IS AN UPDATED COPY OF THE FORM DEVELOPED ON 05/13/16:</p> <ol style="list-style-type: none"> 1. LOWERED CVO VOR/DME FEEDER ALTITUDE FROM 3800 TO 3700. 2. LOWERED EUG VORTAC FEEER ALTITUDE FROM 3800 TO 3700. 3. RAISED INT SDF ALTITUDE AT WENKA FROM 2400 TO 2500. 4. LOWERED HIL ALTITUDE AT DERAY FROM 3800 TO 3700. 5. LOWERED MISSED APPROACH HOLDING ALTITUDE AT DERAY FROM 3800 TO 3700. 6. UPDATED CHANGES AND REASONS TO REFLECT. <p>7/26/2016: THIS IS AN UPDATED COPY OF THE FORM DEVELOPED ON 05/13/2016 RESEQUENCED ARINC CODE.</p>						

FIPC BASIC FORM						
PROCEDURE: RNAV (GPS) RWY 35 2			AIRPORT NAME: CORVALLIS MUNI		AIRPORT ID: KCVO	SPECIAL CONTROL NO: SG-08-079-16
FAC ID: KCVO35.02		CITY: CORVALLIS			ST: OR	ORIG CHART DATE: 11/10/2016
DFL TYPE: PROC/S	THIRD PARTY: <input type="checkbox"/> YES	EST. TIME ON SITE: 0.4	REIMB. NUMBER:	PTS TASK ID: 2014091926747001001		
PREFLIGHT NOTES						
REVIEWER:					DATE:	
COMMENTS:					CHECK ONE: <input type="checkbox"/> FLT CK REQ <input type="checkbox"/> NFCR <input type="checkbox"/> REJECT	
					YES	NO
					CPV COMPLETE?	X
PROCEDURE RESULTS						
INSPECTION DATE: 08/09/2016	CREW #: VN888	N #:	INSTRUMENT PROCEDURE STATUS: <input type="checkbox"/> SAT <input type="checkbox"/> SAT W/CHANGES <input checked="" type="checkbox"/> UNSAT		ARINC CODING: <input type="checkbox"/> SAT <input type="checkbox"/> SAT/GOLD <input type="checkbox"/> UNSAT	
FLIGHT INSPECTOR SIGNATURE: wade ek terrell @ 08/09/2016 14:47			PRINTED NAME: AVN, CREWMEMBER 2			NOTAM INITIATED? <input type="checkbox"/> YES <input checked="" type="checkbox"/> NO
FLIGHT INSPECTOR REMARKS: The 8260-3, the FIG, and the NACO file are in agreement on the altitudes. The 8260-10 still has previous revision altitudes for the Initial and intermediate segments. Should be 3700 at DERAY and 2500 at WENKA. -10 shows 3800 and 2400.						
IN-FLIGHT OBSTACLE REPORT						
OBSTRUCTION ID #:	COORDINATES OR LOCATION:	GNSS ALTITUDE (MSL):	BAROMETRIC ALTITUDE (MSL):	HEIGHT ABOVE GROUND LEVEL:		





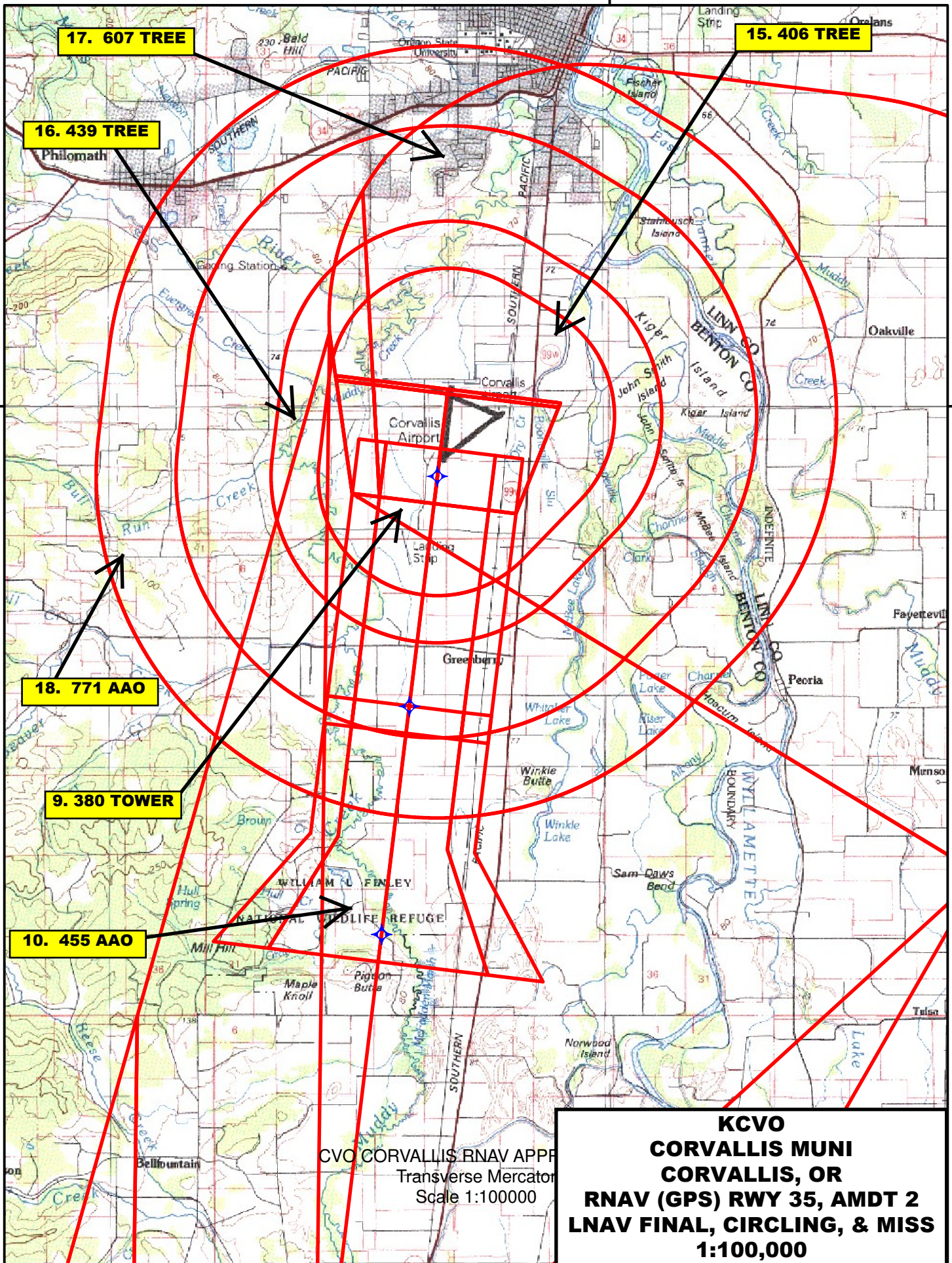
Transverse Mercator

Scale 1:500000

43

123°15'0"W

44°30'0"N



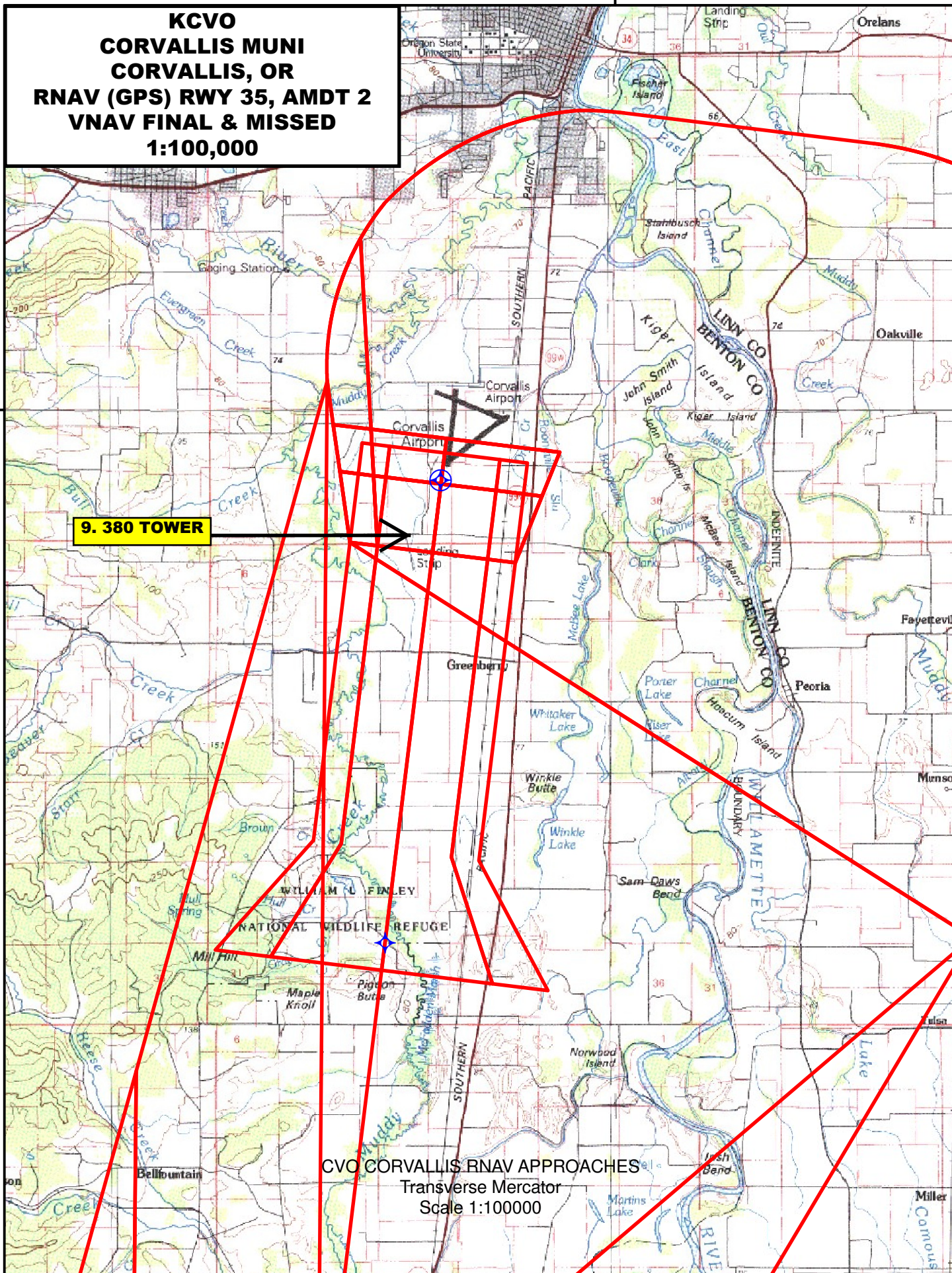
KCVO CORVALLIS RNAV APPR
Transverse Mercator
Scale 1:100000

**KCVO
CORVALLIS MUNI
CORVALLIS, OR
RNAV (GPS) RWY 35, AMDT 2
LNAV FINAL, CIRCLING, & MISS
1:100,000**

123°15'0"W

**KCVO
CORVALLIS MUNI
CORVALLIS, OR
RNAV (GPS) RWY 35, AMDT 2
VNAV FINAL & MISSED
1:100,000**

44°30'0"N



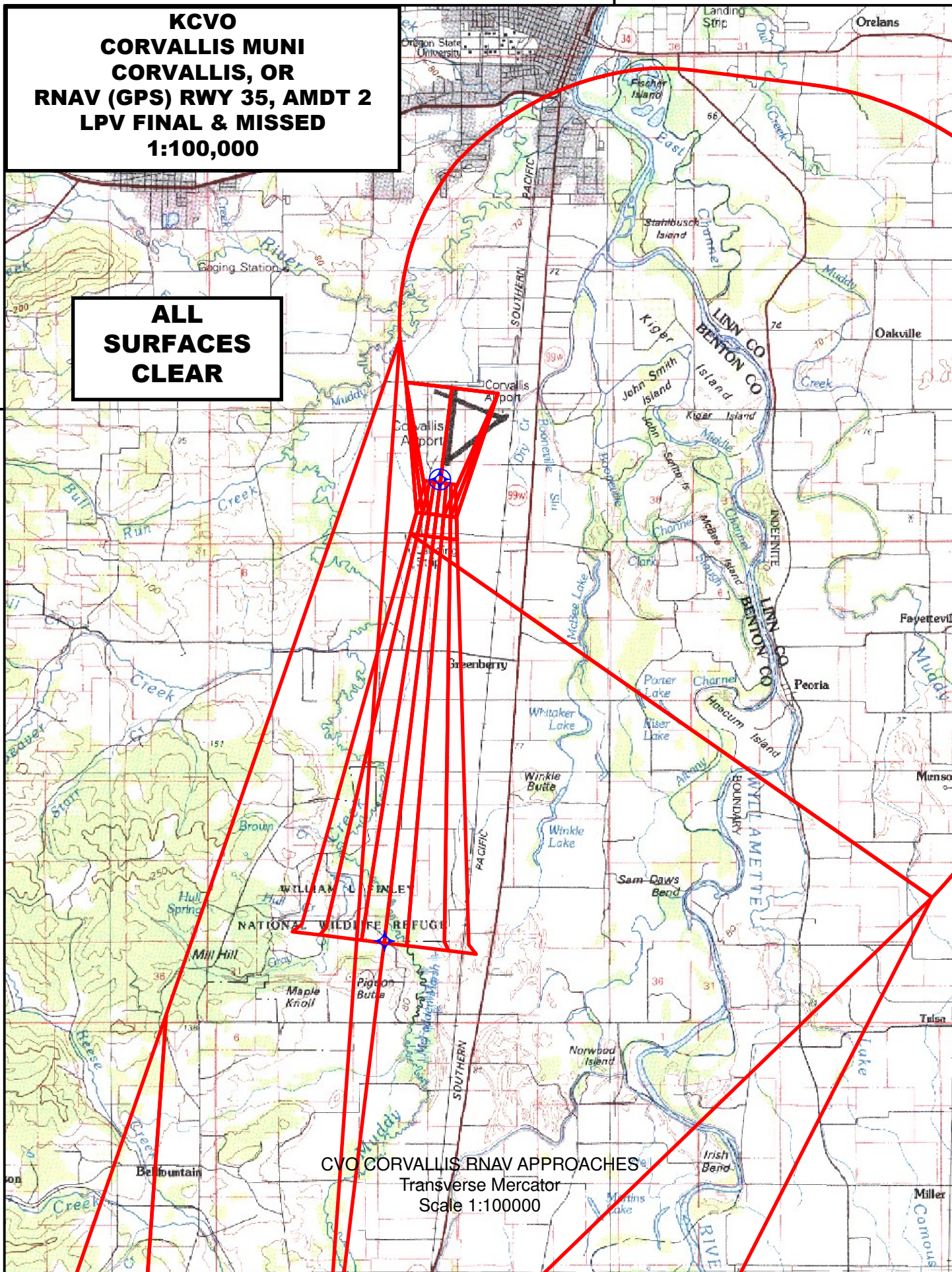
123°15'0"W

**KCVO
CORVALLIS MUNI
CORVALLIS, OR
RNAV (GPS) RWY 35, AMDT 2
LPV FINAL & MISSED
1:100,000**

**ALL
SURFACES
CLEAR**

CVO CORVALLIS RNAV APPROACHES
Transverse Mercator
Scale 1:100000

44°30'0"N



CORVALLIS, OREGON

AL-782 (FAA)

FIG

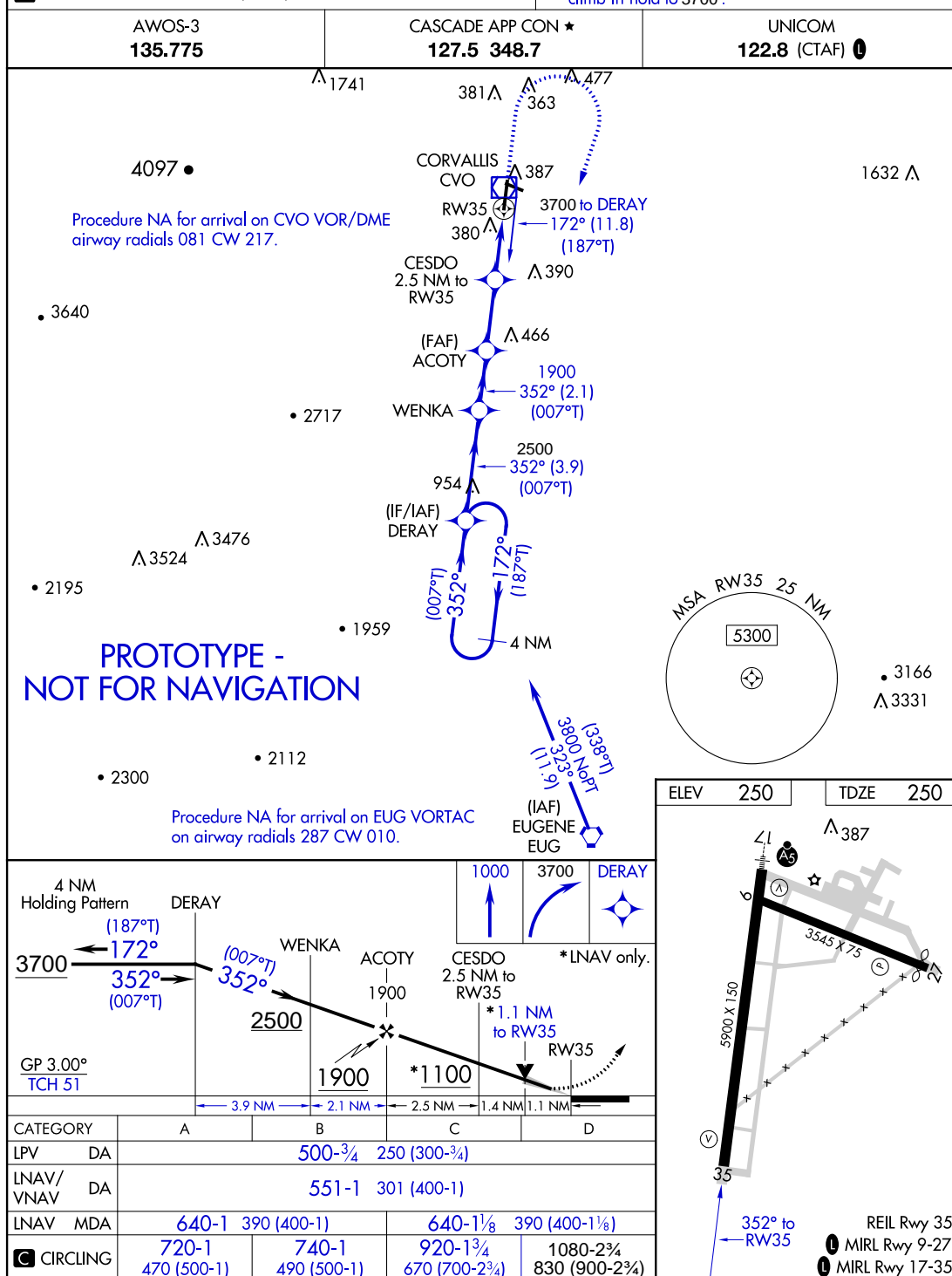
WAAS CH 69517 W35A	APP CRS 352°	Rwy Idg TDZE Apt Elev	5900 250 250
--	------------------------	-----------------------------	---

RNAV (GPS) RWY 35

CORVALLIS MUNI (CVO)

▼ For uncompensated Baro-VNAV systems, LNAV/VNAV NA below
▲ -1.5°C (5°F) or above 54°C (130°F). DME/DME RNP-0.3 NA.

MISSED APPROACH: Climb to 1000 then climbing
right turn to 3700 direct DERAY and hold, continue
climb-in-hold to 3700.



AUTOMATED AL-782 RNAV (GPS) RWY 35

NW-1
MAY 20, 2016
COMPILER:
REVIEWER:
DBL CHKR:
EFF DATE: FIG

CORVALLIS, OREGON

Amdt 2 FIG

44°30'N-123°17'W

CORVALLIS MUNI (CVO)

RNAV (GPS) RWY 35

CORVALLIS, OREGON

WAAS CH 69517 W35A	APP CRS 349°	Rwy Idg TDZE Apt Elev	5900 250 250
--	------------------------	-----------------------------	---

AL-782 (FAA)

15288

RNAV (GPS) RWY 35

CORVALLIS MUNI (CVO)

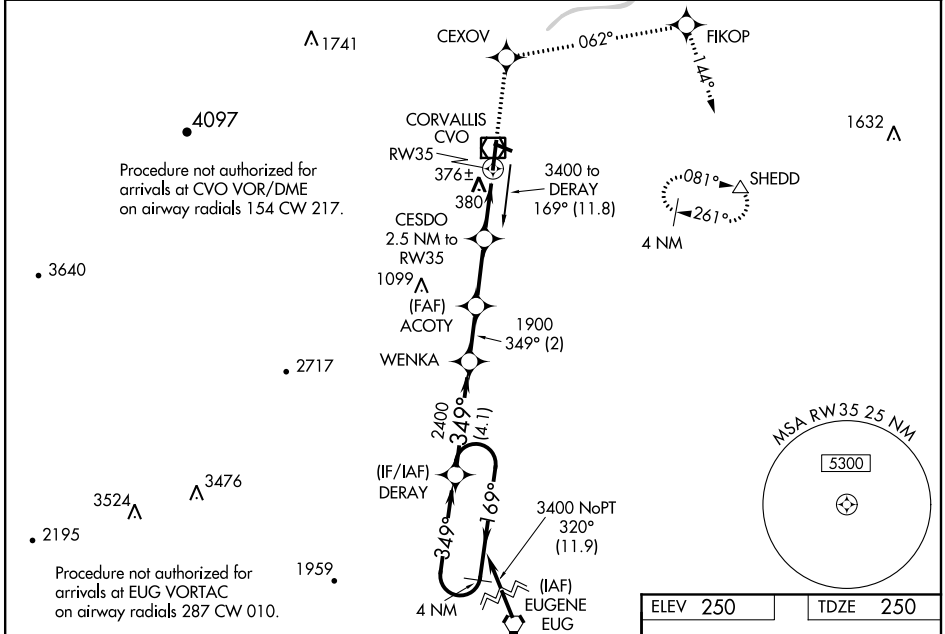
For uncompensated Baro-VNAV systems, LNAV/VNAV NA below -15°C (5°F) or above 48°C (118°F). DME/DME RNP-0.3 NA. When local altimeter setting not received use Eugene altimeter setting, increase LPV DA to 520 feet, increase LNAV/VNAV DA to 735 feet and all MDA 80 feet, increase LPV and LNAV/VNAV all Cats visibility ¼ mile, increase LNAV Cats C/D and Circling Cat D visibility ¼ mile. Baro-VNAV and VDP NA when using Eugene altimeter setting.

MISSED APPROACH: Climb to 3000 direct CEXOV and on track 062° to FIKOP and on track 144° to SHEDD and hold.

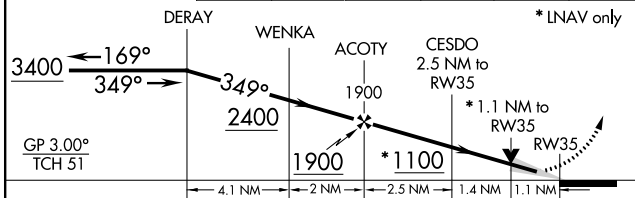
AWOS-3
135.775

CASCADE APP CON *
127.5 348.7

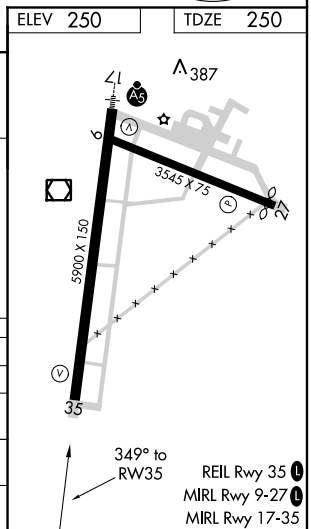
UNICOM
123.0 (CTAF)



4 NM Holding Pattern	3000	CEXOV	tr 062°	FIKOP	tr 144°	SHEDD
----------------------	------	-------	---------	-------	---------	-------



CATEGORY	A	B	C	D
LPV DA		450-¾	200 (200-¾)	
LNAV/VNAV DA		665-1½	415 (500-1½)	
LNAV MDA		640-1 390 (400-1)		640-1¼ 390 (400-1¼)
CIRCLING	720-1 470 (500-1)		720-1½ 470 (500-1½)	900-2 650 (700-2)



CORVALLIS, OREGON
Amdt 1 23SEP10

OLD

RNAV (GPS) RWY 35

CORVALLIS MUNI (CVO)

NW-1, 04 FEB 2016 to 03 MAR 2016

TERMINAL AIRSPACE DATA REQUIREMENTS

CITY:

STATE:

AIRPORT NAME:

ID:

PROCEDURE:

AMDT:

DOCKET # :

(96-AXX-X/Required/Not Required)

ALL DIST TO 1/100 NM; ELEV TO NEAREST FT; COORD TO 1/100 SEC; DEG TO 1/100 DG.

1. Distance from _____ to 1000' point _____

(Enter THLD, FAF, ARP, FACILITY, as appropriate)

2. Width of _____ segment at 1000' point _____

(Enter appropriate segment , final, intermediate, etc.)

3. True Course of _____ segment containing 1000' point _____

4. High Terrain in _____ segment containing 1000' point _____

5. Distance from _____ to 1500' point _____

(If 1500' point in PT maneuvering area or holding pattern note in remarks)

6. Width of _____ segment at 1500' point _____

7. True Course of _____ segment containing 1500' point _____

8. High Terrain in _____ segment containing 1500' point _____

9. Threshold Coordinates (if straight-in) ... _____ / _____

10. ARP Coordinates _____ / _____

11. Runway Approach End and distance furthest from ARP.....RWY _____

Distance _____ NM

12. FAF Coordinates _____ / _____

(Click to Select)

REMARKS: