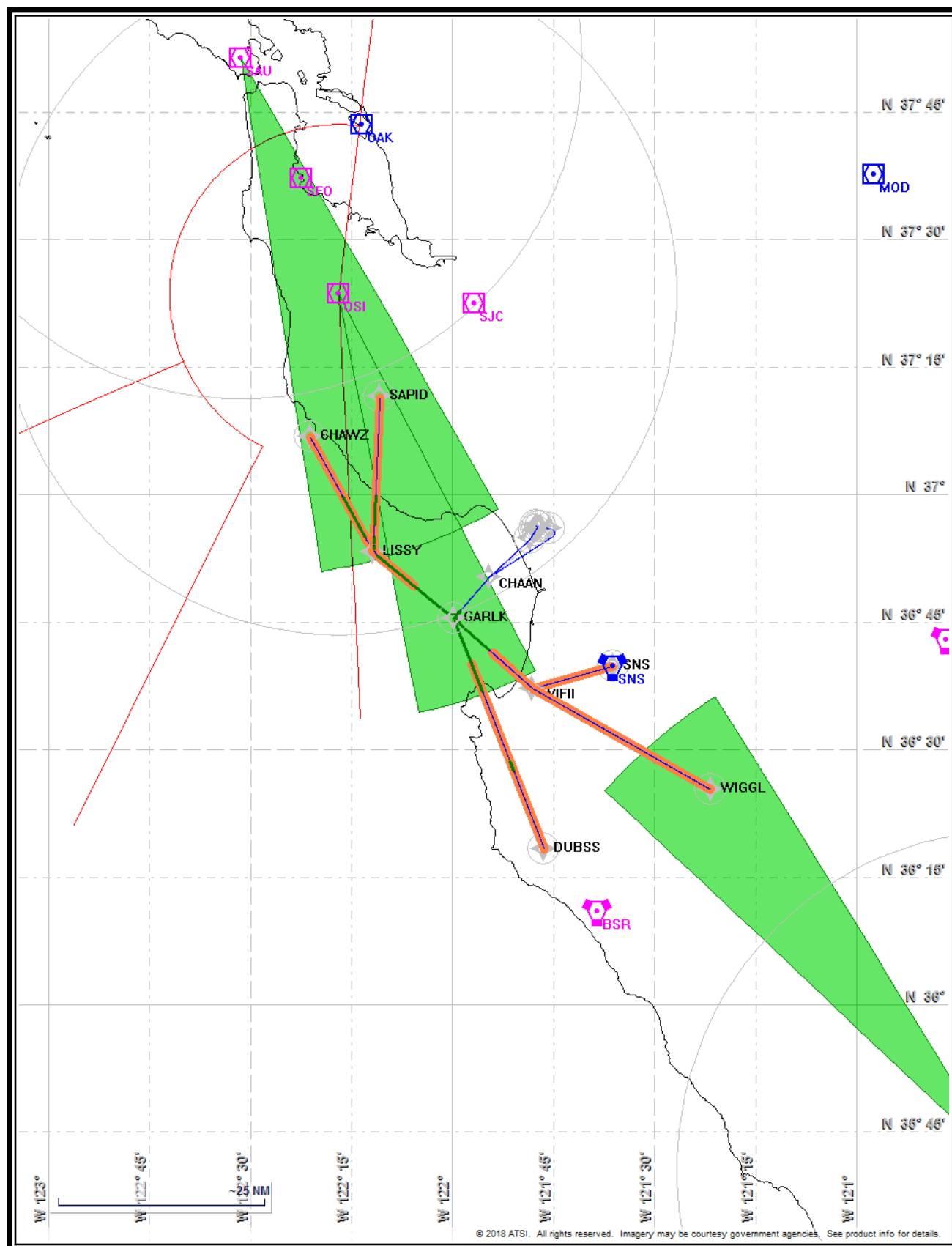


Name: Bruce Connolly
Project Name: Watsonville SID
Output File: KWVI GARLK SID RW09
 CHAWZ 20180604_1434
Procedure Name: GARLK
Software: RNAV-Pro™
Version: 2.39
Date/Time: 6/4/2018 2:39:03 PM
Input File: KWVI GARLK SID RW09
 CHAWZ.txt
Databases: AIRNAV Date: 5/23/2018
 CIFP Date: 5/24/2018
 DTED® (MAX) Date: 2002

Results Summary:

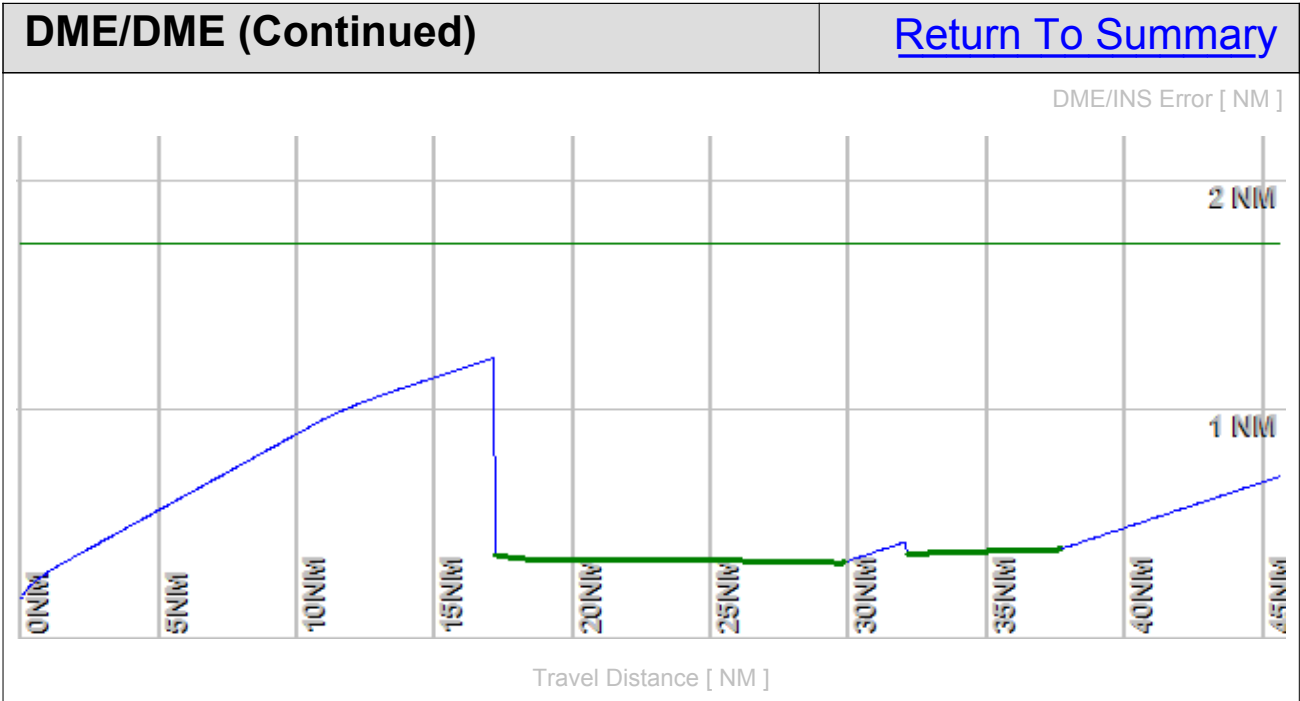
Flyability	✓	Please Check Flyability Results
DME/DME	✓	2 Critical DMEs Exist: OSI SNS
Radars	?	
Comms	?	
TERPS	?	



Flight Plan					Return To Summary		
Name	Type	Lat/Lon	Alt [ft]	VNAV Mode	IAS [Kts]	Turn Type	Leg Type
RW09(A...	WP	N 36° 56' 17.98" W 121° 47' 38.66"	163.2	VNAV	0.0	Fly Over	TF
RW27(D...	WP	N 36° 56' 11.24" W 121° 46' 50.14"	171.2	VNAV	130.0	Fly Over	VA
GH09:	WP	N 36° 56' 0.41" W 121° 45' 32.30"	699.0	VNAV	145.0	Fly Over	DF
CHAAAN	WP	N 36° 50' 15.78" W 121° 54' 36.04"	2854.5	VNAV	145.0	Fly By	TF
GARLK	WP	N 36° 45' 25.97" W 121° 59' 50.24"	5000.0	VNAV	180.0	Fly By	TF
LISSY	WP	N 36° 53' 13.42" W 122° 11' 45.61"	5000.0	VNAV	180.0	Fly By	TF
CHAWZ	WP	N 37° 6' 48.59" W 122° 21' 9.58"	5000.0	VNAV	180.0	Fly Over	TF
Climb Gradient: 500.0 ft/NM up to 664.0 ft MSL							

Flyability		Return To Summary
Settings:	Flight Type: Runway Departure	
	Selected Airport: KWVI	
	Aircraft Category: Cat D	
	Climb Gradient: 500.0 ft/NM up to 664.0 ft MSL	
	Ground Speeds: Departure: 120.0 Kts out to 10.0 NM Table: <div><div>200.0 Kts up to 11000.0 ft</div><div>240.0 Kts up to 18000.0 ft</div><div>260.0 Kts up to 24000.0 ft</div><div>340.0 Kts up to 99900.0 ft</div></div>	
	Wind Settings: <i>None assigned</i>	
	Descent During a Turn: Allowed	
	VNAV Mode: Flight Plan	
Required IAS at Fly-By WP CHAAN could not be reached with given A/C acceleration performance.		
Flight Track comes into contact with terrain. Minimum AGL along route was -13.97 Ft. Flight Track contacted terrain (DTED 0 MAX) between AER and DER or within 2/3 NM of DER.		

DME/DME	Return To Summary
Settings:	<p> RNP: 2.0 Flight Mode: Manual Line of Sight (DTED Level 0 Max): Evaluated DME Restrictions: Evaluated Inertial Drift: Enabled Initial Drift: 0.165 NM INS Drift Rate: 8.000 NM/Hour Range Mode: OSV Co-Frequencies: Evaluated RNP Edges: Evaluated Min DME Range: 3.0 NM Allowed Gap Length: 4.0 NM DME Types: VOR/DME, VORTAC, Standalone, and User DME Include Angles: 30 to 150 Critical DMEs: Allowed DoD Facilities: Not included Foreign Facilities: Not included Low DMEs: Included Terminal DMEs: Included Flight Check DMEs: Selected Higher Altitudes: Evaluated Near Maximum Altitude: Evaluated Minimum MSL DMEs Avail: 4606 ft </p>
<p> Total Number of DMEs Used: 3 Maximum DME Error: 1.229 NM. 2 Critical DMEs were found. Available DMEs: SNS, OSI, SAU </p>	

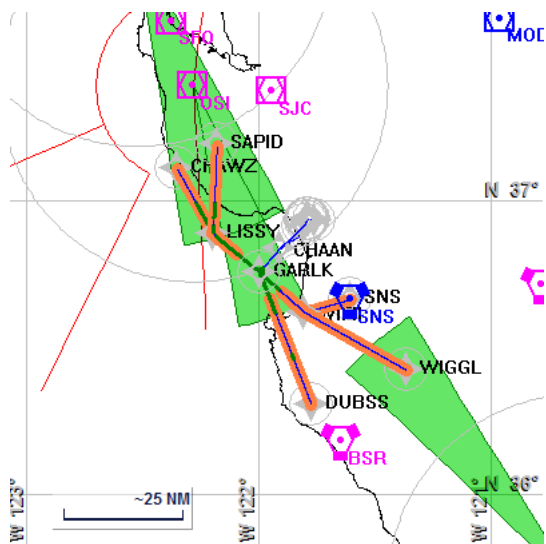


DME/DME (Continued)						Return To Summary			
DMEs Used									
#	Name	Lat/Lon/MAGVAR	Range	Source	Critical	Err. [NM]	Status	Time	Distance
1	OSI	N 37° 23' 33.65" W 122° 16' 54.63" 17 E	L + ESV	User	YES	1.825	Enabled	22.9%	27.6%
2	SNS	N 36° 39' 49.81" W 121° 36' 11.46" 17 E	H	Database	YES	2.369	Enabled	33.1%	39.9%
3	SAU	N 37° 51' 19.20" W 122° 31' 21.91" 17 E	L + ESV	User	NO	1.229	Enabled	10.2%	12.3%
	Total Coverage							33.1%	39.9%
Flight Check DME Selection									
Distance [NM]		Selected DMEs						Alternate	
0.0									
0.7									
1.7		SNS							
11.5		SNS							
16.9		SNS	OSI						
29.6		SNS	OSI	SAU					
Inertial Drift Segments									
#	Start Location			End Location			Length [NM]		
1	N 36° 56' 17.98" W 121° 47' 38.66"			N 36° 46' 21.99" W 121° 58' 50.27"			17.1		
VOR: OSI				Available from N 36° 56' 17.98" W 121° 47' 38.66" to N 36° 46' 21.99" W 121° 58' 50.27"					
VOR: SNS				Available from N 36° 56' 17.98" W 121° 47' 38.66" to N 36° 46' 21.99" W 121° 58' 50.27"					
VOR: SJC				Available from N 36° 56' 17.98" W 121° 47' 38.66" to N 36° 46' 21.99" W 121° 58' 50.27"					
VOR: BSR				Available from N 36° 48' 2.23" W 121° 57' 0.66" to N 36° 46' 21.99" W 121° 58' 50.27"					
2	N 36° 53' 0.49" W 122° 11' 25.45"			N 36° 54' 52.57" W 122° 12' 54.30"			2.2		
VOR: OSI				Available from N 36° 53' 0.49" W 122° 11' 25.45" to N 36° 54' 52.57" W 122° 12' 54.30"					
VOR: SNS				Available from N 36° 53' 0.49" W 122° 11' 25.45" to N 36° 54' 52.57" W 122° 12' 54.30"					
VOR: SJC				Available from N 36° 53' 0.49" W 122° 11' 25.45" to N 36° 54' 52.57" W 122° 12' 54.30"					

DME/DME (Continued)			Return To Summary
<i>Inertial Drift Segments (Continued)</i>			
#	Start Location	End Location	Length [NM]
3	N 36° 59' 50.35" W 122° 16' 19.89"	N 37° 6' 47.64" W 122° 21' 8.92"	7.9
	VOR: OSI	Available from N 36° 59' 50.35" W 122° 16' 19.89" to N 37° 6' 47.64" W 122° 21' 8.92"	
	VOR: SFO	Available from N 36° 59' 50.35" W 122° 16' 19.89" to N 37° 6' 47.64" W 122° 21' 8.92"	
	VOR: SFO	Available from N 36° 59' 50.35" W 122° 16' 19.89" to N 37° 6' 47.64" W 122° 21' 8.92"	
	VOR: SNS	Available from N 36° 59' 50.35" W 122° 16' 19.89" to N 37° 1' 52.94" W 122° 17' 44.69"	
	VOR: SJC	Available from N 36° 59' 50.35" W 122° 16' 19.89" to N 37° 6' 47.64" W 122° 21' 8.92"	
	VOR: OAK	Available from N 37° 3' 46.74" W 122° 19' 3.50" to N 37° 6' 47.64" W 122° 21' 8.92"	

Available DMEs by Waypoints		Return To Summary
Waypoint Before	Waypoint After	DME List
RW09(AER)	RW27(DER)	
RW27(DER)	GH09:	
GH09:	CHAAN	SNS
CHAAN	GARLK	SNS
GARLK	LISSY	OSI and SNS
LISSY	CHAWZ	SAU, OSI, and SNS

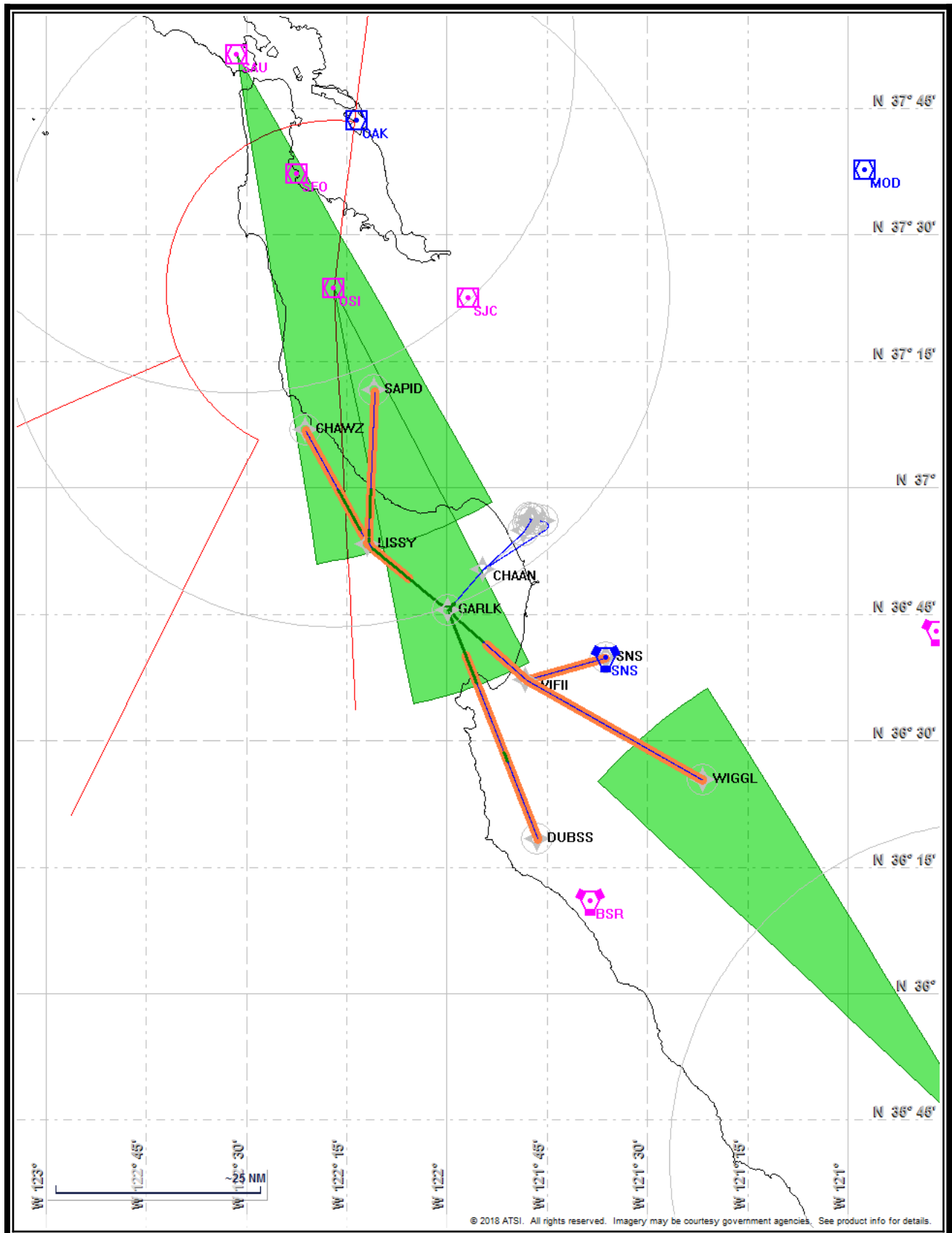
User Data					Return To Summary		
User Data Files							
#	File Name						
1	UserDMEs_KWVI SID.udt						
User DMEs							
#	Name	Lat/Lon/MAGVAR	Range	Elevation [ft]	Frequency	Replaces	Status
1	OSI	N 37° 23' 33.65" W 122° 16' 54.63" 17 E	L	2270.0	113.90	OSI	Used
Restriction:		Bearing [True]: 247.0° to 7.0° Bearing [Mag]: 230.0° to 350.0°			Distance: Beyond 20.0 NM Altitude: Below 99999.0 ft		
Restriction:		Bearing [True]: 207.0° to 247.0° Bearing [Mag]: 190.0° to 230.0°			Distance: Beyond 20.0 NM Altitude: Below 13000.0 ft		
Restriction:		Bearing [True]: 177.0° to 7.0° Bearing [Mag]: 160.0° to 350.0°			Distance: Beyond 0.0 NM Altitude: Below 11000.0 ft		
ESV:		Bearing [True]: 152.0° to 169.0° Bearing [Mag]: 135.0° to 152.0°			Arc Distance: Out to 50.0 NM Altitude: 4600.0 to 22000.0 ft		
2	SAU	N 37° 51' 19.20" W 122° 31' 21.91" 17 E	L	1040.0	116.20	SAU	Used
Restriction:		Bearing [True]: 298.0° to 336.0° Bearing [Mag]: 281.0° to 319.0°			Distance: Beyond 20.0 NM Altitude: Below 12000.0 ft		
Restriction:		Bearing [True]: 317.0° to 330.0° Bearing [Mag]: 300.0° to 313.0°			Distance: Beyond 10.0 NM Altitude: Below 12000.0 ft		
ESV:		Bearing [True]: 150.0° to 171.0° Bearing [Mag]: 133.0° to 154.0°			Arc Distance: Out to 61.0 NM Altitude: 4900.0 to 20000.0 ft		
3	PRB	N 35° 40' 20.87" W 120° 37' 37.59" 16 E	L	817.4	114.30	PRB	Not Used
Restriction:		Bearing [True]: 136.0° to 156.0° Bearing [Mag]: 120.0° to 140.0°			Distance: Beyond 27.0 NM Altitude: Below 8000.0 ft		
ESV:		Bearing [True]: 313.0° to 328.0° Bearing [Mag]: 297.0° to 312.0°			Arc Distance: Out to 66.0 NM Altitude: 6100.0 to 20000.0 ft		



Name: Bruce Connolly
Project Name: Watsonville SID
Output File: KWVI GARLK SID RW09
DUBSS 20180604_1434
Procedure Name: GARLK
Software: RNAV-Pro™
Version: 2.39
Date/Time: 6/4/2018 2:35:04 PM
Input File: KWVI GARLK SID RW09
DUBSS.txt
Databases: AIRNAV Date: 5/23/2018
CIFP Date: 5/24/2018
DTED® (MAX) Date: 2002

Results Summary:

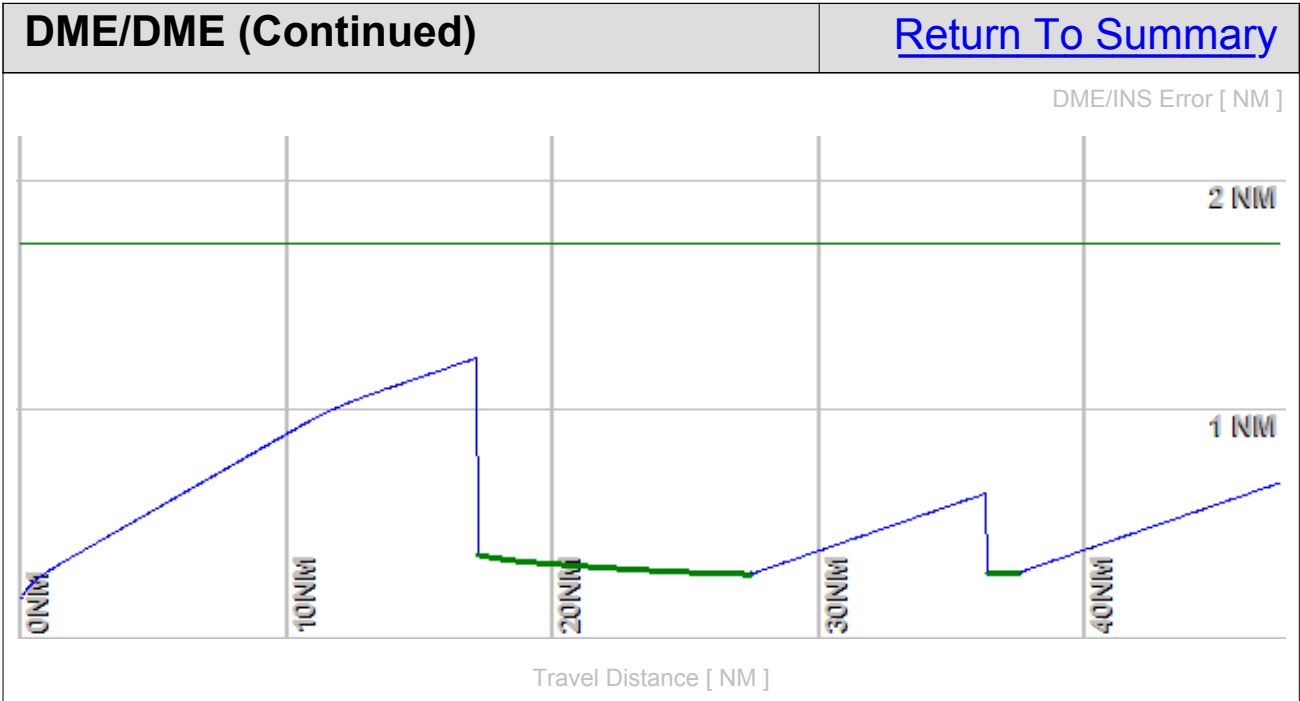
Flyability	✓	Please Check Flyability Results
DME/DME	✓	2 Critical DMEs Exist: OSI SNS
Radars	?	
Comms	?	
TERPS	?	



Flight Plan					Return To Summary		
Name	Type	Lat/Lon	Alt [ft]	VNAV Mode	IAS [Kts]	Turn Type	Leg Type
RW09(A...	WP	N 36° 56' 17.98" W 121° 47' 38.66"	163.2	VNAV	0.0	Fly Over	TF
RW27(D...	WP	N 36° 56' 11.24" W 121° 46' 50.14"	171.2	VNAV	130.0	Fly Over	VA
GH09:	WP	N 36° 56' 0.41" W 121° 45' 32.30"	700.0	VNAV	145.0	Fly Over	DF
CHAAN	WP	N 36° 50' 15.78" W 121° 54' 36.04"	2854.5	VNAV	145.0	Fly By	TF
GARLK	WP	N 36° 45' 25.97" W 121° 59' 50.24"	5000.0	VNAV	180.0	Fly By	TF
DUBSS	WP	N 36° 18' 17.44" W 121° 46' 22.72"	7100.0	VNAV	180.0	Fly Over	TF
Climb Gradient: 500.0 ft/NM up to 664.0 ft MSL							

Flyability		Return To Summary
Settings:	Flight Type: Runway Departure	
	Selected Airport: KWWI	
	Aircraft Category: Cat D	
	Climb Gradient: 500.0 ft/NM up to 664.0 ft MSL	
	Ground Speeds: Departure: 120.0 Kts out to 10.0 NM Table: <div>200.0 Kts up to 11000.0 ft 240.0 Kts up to 18000.0 ft 260.0 Kts up to 24000.0 ft 340.0 Kts up to 99900.0 ft</div>	
	Wind Settings: <i>None assigned</i>	
	Descent During a Turn: Allowed	
	VNAV Mode: Flight Plan	
Required IAS at Fly-By WP CHAAN could not be reached with given A/C acceleration performance.		
Flight Track comes into contact with terrain. Minimum AGL along route was -13.97 Ft. Flight Track contacted terrain (DTED 0 MAX) between AER and DER or within 2/3 NM of DER.		

DME/DME		Return To Summary
Settings:	<p>RNP: 2.0</p> <p>Flight Mode: Manual</p> <p>Line of Sight (DTED Level 0 Max): Evaluated</p> <p>DME Restrictions: Evaluated</p> <p>Inertial Drift: Enabled</p> <p> Initial Drift: 0.165 NM</p> <p> INS Drift Rate: 8.000 NM/Hour</p> <p>Range Mode: OSV</p> <p>Co-Frequencies: Evaluated</p> <p>RNP Edges: Evaluated</p> <p>Min DME Range: 3.0 NM</p> <p>Allowed Gap Length: 4.0 NM</p> <p>DME Types: VOR/DME, VORTAC, Standalone, and User</p> <p>DME Include Angles: 30 to 150</p> <p>Critical DMEs: Allowed</p> <p>DoD Facilities: Not included</p> <p>Foreign Facilities: Not included</p> <p>Low DMEs: Included</p> <p>Terminal DMEs: Included</p> <p>Flight Check DMEs: Selected</p> <p>Higher Altitudes: Evaluated</p> <p>Near Maximum Altitude: Evaluated</p> <p>Minimum MSL DMEs Avail: 4605 ft</p>	
<p>Total Number of DMEs Used: 3</p> <p>Maximum DME Error: 1.229 NM.</p> <p>2 Critical DMEs were found.</p> <p>Available DMEs: SNS, OSI, BSR</p>		

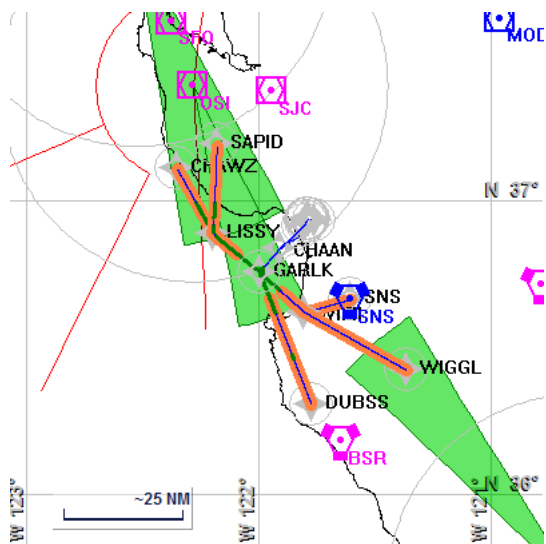


DME/DME (Continued)							Return To Summary		
DMEs Used									
#	Name	Lat/Lon/MAGVAR	Range	Source	Critical	Err. [NM]	Status	Time	Distance
1	OSI	N 37° 23' 33.65" W 122° 16' 54.63" 17 E	L + ESV	User	YES	1.994	Enabled	18.1%	21.7%
2	SNS	N 36° 39' 49.81" W 121° 36' 11.46" 17 E	H	Database	YES	2.438	Enabled	20.2%	24.3%
3	BSR	N 36° 10' 52.66" W 121° 38' 31.60" 16 E	L	Database	NO	1.229	Enabled	2.2%	2.6%
	Total Coverage							20.2%	24.3%
Flight Check DME Selection									
Distance [NM]		Selected DMEs						Alternate	
0.0									
0.7									
1.7		SNS							
11.5		SNS	OSI						
17.4		SNS	OSI	BSR					
Inertial Drift Segments									
#	Start Location			End Location			Length [NM]		
1	N 36° 56' 17.98" W 121° 47' 38.66"			N 36° 46' 21.72" W 121° 58' 49.74"			17.1		
VOR: OSI				Available from N 36° 56' 17.98" W 121° 47' 38.66" to N 36° 46' 21.72" W 121° 58' 49.74"					
VOR: SNS				Available from N 36° 56' 17.98" W 121° 47' 38.66" to N 36° 46' 21.72" W 121° 58' 49.74"					
VOR: SJC				Available from N 36° 56' 17.98" W 121° 47' 38.66" to N 36° 46' 21.72" W 121° 58' 49.74"					
VOR: BSR				Available from N 36° 48' 2.31" W 121° 57' 0.59" to N 36° 46' 21.72" W 121° 58' 49.74"					
2	N 36° 36' 48.49" W 121° 55' 32.74"			N 36° 28' 38.90" W 121° 51' 29.74"			8.8		
VOR: BSR				Available from N 36° 36' 48.49" W 121° 55' 32.74" to N 36° 28' 38.90" W 121° 51' 29.74"					
VOR: SNS				Available from N 36° 36' 48.49" W 121° 55' 32.74" to N 36° 28' 38.90" W 121° 51' 29.74"					

DME/DME (Continued)			Return To Summary
<i>Inertial Drift Segments (Continued)</i>			
#	Start Location	End Location	Length [NM]
3	N 36° 27' 27.62" W 121° 50' 54.45"	N 36° 18' 18.94" W 121° 46' 23.46"	9.8
VOR: BSR		Available from N 36° 27' 27.62" W 121° 50' 54.45" to N 36° 18' 18.94" W 121° 46' 23.46"	
VOR: SNS		Available from N 36° 27' 27.62" W 121° 50' 54.45" to N 36° 18' 18.94" W 121° 46' 23.46"	

Available DMEs by Waypoints		Return To Summary
Waypoint Before	Waypoint After	DME List
RW09(AER)	RW27(DER)	
RW27(DER)	GH09:	
GH09:	CHAAN	SNS
CHAAN	GARLK	OSI and SNS
GARLK	DUBSS	OSI, BSR, and SNS

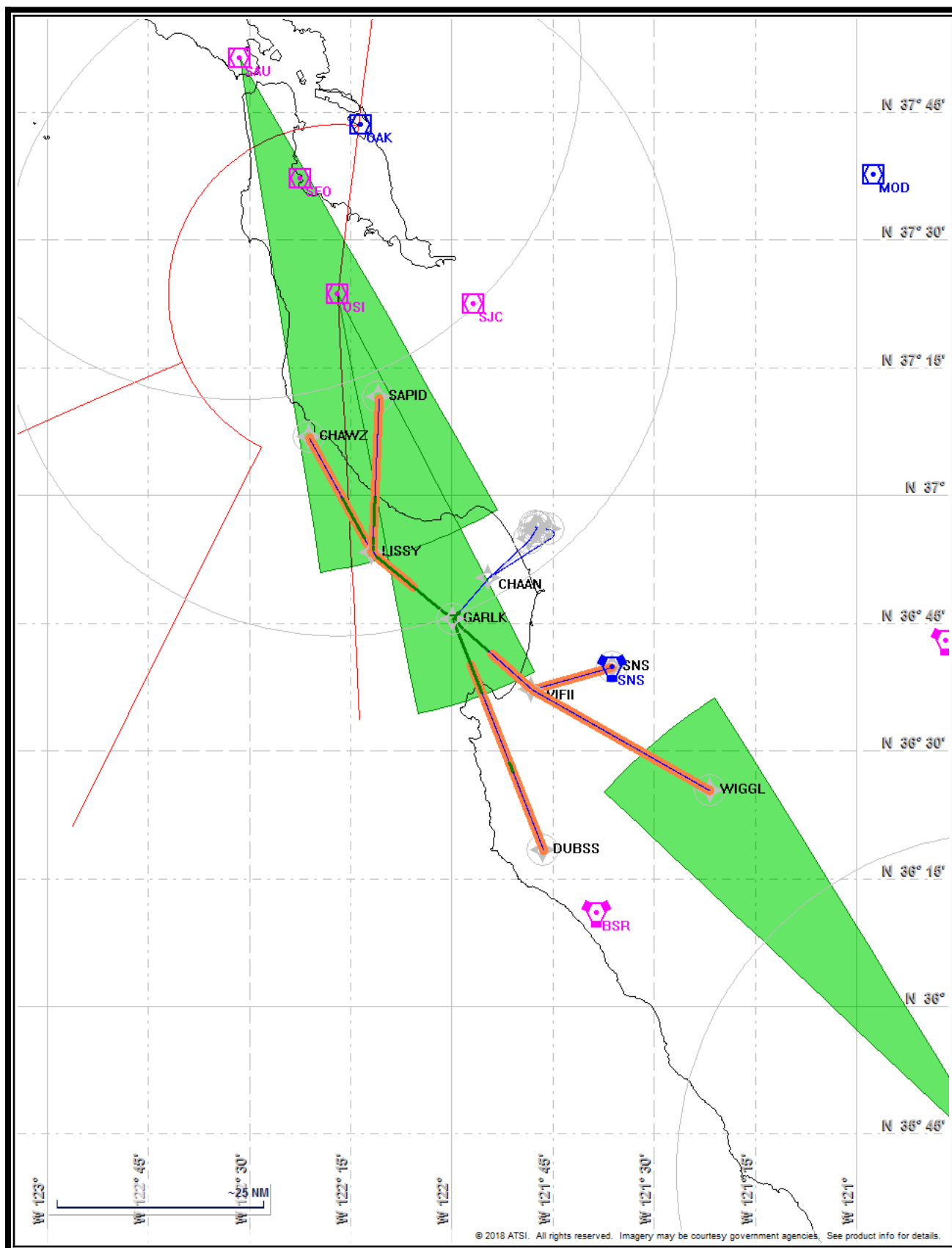
User Data					Return To Summary		
User Data Files							
#	File Name						
1	UserDMEs_KWVI SID.udt						
User DMEs							
#	Name	Lat/Lon/MAGVAR	Range	Elevation [ft]	Frequency	Replaces	Status
1	OSI	N 37° 23' 33.65" W 122° 16' 54.63" 17 E	L	2270.0	113.90	OSI	Used
Restriction:		Bearing [True]: 247.0° to 7.0° Bearing [Mag]: 230.0° to 350.0°			Distance: Beyond 20.0 NM Altitude: Below 99999.0 ft		
Restriction:		Bearing [True]: 207.0° to 247.0° Bearing [Mag]: 190.0° to 230.0°			Distance: Beyond 20.0 NM Altitude: Below 13000.0 ft		
Restriction:		Bearing [True]: 177.0° to 7.0° Bearing [Mag]: 160.0° to 350.0°			Distance: Beyond 0.0 NM Altitude: Below 11000.0 ft		
ESV:		Bearing [True]: 152.0° to 169.0° Bearing [Mag]: 135.0° to 152.0°			Arc Distance: Out to 50.0 NM Altitude: 4600.0 to 22000.0 ft		
2	SAU	N 37° 51' 19.20" W 122° 31' 21.91" 17 E	L	1040.0	116.20	SAU	Not Used
Restriction:		Bearing [True]: 298.0° to 336.0° Bearing [Mag]: 281.0° to 319.0°			Distance: Beyond 20.0 NM Altitude: Below 12000.0 ft		
Restriction:		Bearing [True]: 317.0° to 330.0° Bearing [Mag]: 300.0° to 313.0°			Distance: Beyond 10.0 NM Altitude: Below 12000.0 ft		
ESV:		Bearing [True]: 150.0° to 171.0° Bearing [Mag]: 133.0° to 154.0°			Arc Distance: Out to 61.0 NM Altitude: 4900.0 to 20000.0 ft		
3	PRB	N 35° 40' 20.87" W 120° 37' 37.59" 16 E	L	817.4	114.30	PRB	Not Used
Restriction:		Bearing [True]: 136.0° to 156.0° Bearing [Mag]: 120.0° to 140.0°			Distance: Beyond 27.0 NM Altitude: Below 8000.0 ft		
ESV:		Bearing [True]: 313.0° to 328.0° Bearing [Mag]: 297.0° to 312.0°			Arc Distance: Out to 66.0 NM Altitude: 6100.0 to 20000.0 ft		



Name: Bruce Connolly
Project Name: Watsonville SID
Output File: KWVI GARLK SID RW09
 SAPID 20180604_1434
Procedure Name: GARLK
Software: RNAV-Pro™
Version: 2.39
Date/Time: 6/4/2018 2:39:45 PM
Input File: KWVI GARLK SID RW09
 SAPID.txt
Databases: AIRNAV Date: 5/23/2018
 CIFP Date: 5/24/2018
 DTED® (MAX) Date: 2002

Results Summary:

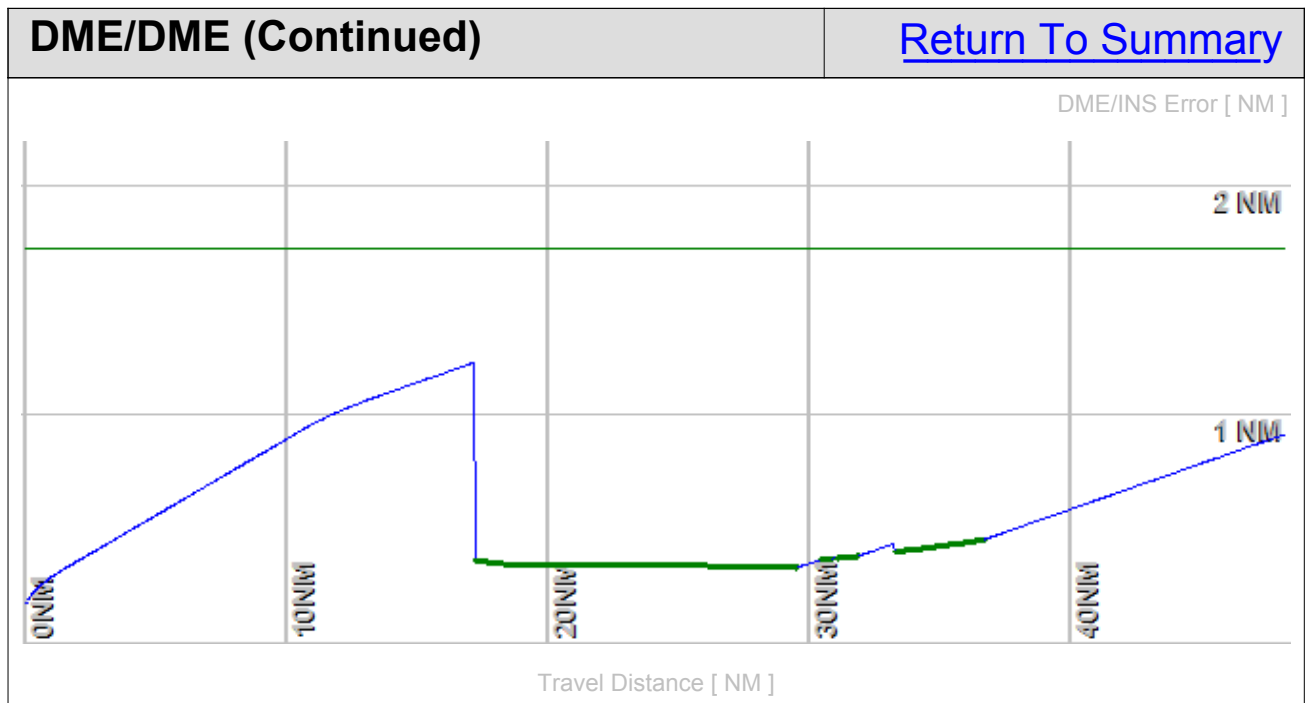
Flyability	✓	Please Check Flyability Results
DME/DME	✓	2 Critical DMEs Exist: OSI SNS
Radars	?	
Comms	?	
TERPS	?	



Flight Plan					Return To Summary		
Name	Type	Lat/Lon	Alt [ft]	VNAV Mode	IAS [Kts]	Turn Type	Leg Type
RW09(A...	WP	N 36° 56' 17.98" W 121° 47' 38.66"	163.2	VNAV	0.0	Fly Over	TF
RW27(D...	WP	N 36° 56' 11.24" W 121° 46' 50.14"	171.2	VNAV	130.0	Fly Over	VA
GH09:	WP	N 36° 56' 0.41" W 121° 45' 32.30"	700.0	VNAV	145.0	Fly Over	DF
CHAAAN	WP	N 36° 50' 15.78" W 121° 54' 36.04"	2854.5	VNAV	145.0	Fly By	TF
GARLK	WP	N 36° 45' 25.97" W 121° 59' 50.24"	5000.0	VNAV	180.0	Fly By	TF
LISSY	WP	N 36° 53' 13.42" W 122° 11' 45.61"	5000.0	VNAV	180.0	Fly By	TF
SAPID	WP	N 37° 11' 28.73" W 122° 10' 47.00"	5000.0	VNAV	180.0	Fly Over	TF
Climb Gradient: 500.0 ft/NM up to 664.0 ft MSL							

Flyability		Return To Summary
Settings:	Flight Type: Runway Departure	
	Selected Airport: KWWI	
	Aircraft Category: Cat D	
	Climb Gradient: 500.0 ft/NM up to 664.0 ft MSL	
	Ground Speeds:	
	Departure: 120.0 Kts out to 10.0 NM	
	Table:	
	200.0 Kts up to 11000.0 ft	
	240.0 Kts up to 18000.0 ft	
	260.0 Kts up to 24000.0 ft	
	340.0 Kts up to 99900.0 ft	
	Wind Settings: <i>None assigned</i>	
	Descent During a Turn: Allowed	
	VNAV Mode: Flight Plan	
Required IAS at Fly-By WP CHAAN could not be reached with given A/C acceleration performance.		
Flight Track comes into contact with terrain. Minimum AGL along route was -13.97 Ft.		
Flight Track contacted terrain (DTED 0 MAX) between AER and DER or within 2/3 NM of DER.		

DME/DME		Return To Summary
Settings:	RNP: 2.0	
	Flight Mode: Manual	
	Line of Sight (DTED Level 0 Max): Evaluated	
	DME Restrictions: Evaluated	
	Inertial Drift: Enabled	
	Initial Drift: 0.165 NM	
	INS Drift Rate: 8.000 NM/Hour	
	Range Mode: OSV	
	Co-Frequencies: Evaluated	
	RNP Edges: Evaluated	
	Min DME Range: 3.0 NM	
	Allowed Gap Length: 4.0 NM	
	DME Types: VOR/DME, VORTAC, Standalone, and User	
	DME Include Angles: 30 to 150	
	Critical DMEs: Allowed	
DoD Facilities: Not included		
Foreign Facilities: Not included		
Low DMEs: Included		
Terminal DMEs: Included		
Flight Check DMEs: Selected		
Higher Altitudes: Evaluated		
Near Maximum Altitude: Evaluated		
Minimum MSL DMEs Avail: 4605 ft		
Total Number of DMEs Used: 3		
Maximum DME Error: 1.229 NM.		
2 Critical DMEs were found.		
Available DMEs: SNS, OSI, SAU, OAK		

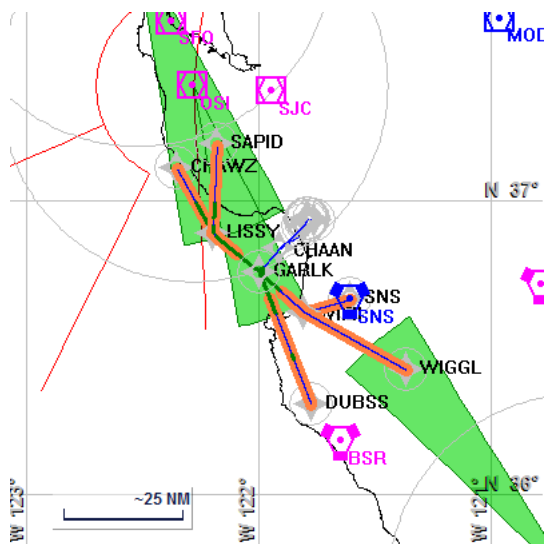


DME/DME (Continued)						Return To Summary			
DMEs Used									
#	Name	Lat/Lon/MAGVAR	Range	Source	Critical	Err. [NM]	Status	Time	Distance
1	OSI	N 37° 23' 33.65" W 122° 16' 54.63" 17 E	L + ESV	User	YES	1.761	Enabled	21.5%	25.7%
2	SNS	N 36° 39' 49.81" W 121° 36' 11.46" 17 E	H	Database	YES	2.474	Enabled	29.5%	35.4%
3	SAU	N 37° 51' 19.20" W 122° 31' 21.91" 17 E	L + ESV	User	NO	1.229	Enabled	8.1%	9.7%
	Total Coverage							29.5%	35.4%
Flight Check DME Selection									
Distance [NM]		Selected DMEs						Alternate	
0.0									
0.7									
1.7		SNS							
11.5		SNS							
16.9		SNS	OSI						
29.3		SNS	OSI	OAK	SAU				
Inertial Drift Segments									
#	Start Location			End Location			Length [NM]		
1	N 36° 56' 17.98" W 121° 47' 38.66"			N 36° 46' 22.05" W 121° 58' 50.19"			17.1		
VOR: OSI				Available from N 36° 56' 17.98" W 121° 47' 38.66" to N 36° 46' 22.05" W 121° 58' 50.19"					
VOR: SNS				Available from N 36° 56' 17.98" W 121° 47' 38.66" to N 36° 46' 22.05" W 121° 58' 50.19"					
VOR: SJC				Available from N 36° 56' 17.98" W 121° 47' 38.66" to N 36° 46' 22.05" W 121° 58' 50.19"					
VOR: BSR				Available from N 36° 48' 2.31" W 121° 57' 0.59" to N 36° 46' 22.05" W 121° 58' 50.19"					
2	N 36° 52' 52.29" W 122° 11' 12.18"			N 36° 53' 35.65" W 122° 11' 41.47"			0.8		
VOR: OSI				Available from N 36° 52' 52.29" W 122° 11' 12.18" to N 36° 53' 35.65" W 122° 11' 41.47"					
VOR: SNS				Available from N 36° 52' 52.29" W 122° 11' 12.18" to N 36° 53' 35.65" W 122° 11' 41.47"					
VOR: SJC				Available from N 36° 52' 52.29" W 122° 11' 12.18" to N 36° 53' 35.65" W 122° 11' 41.47"					

DME/DME (Continued)			Return To Summary
Inertial Drift Segments (Continued)			
#	Start Location	End Location	Length [NM]
3	N 36° 54' 5.57" W 122° 11' 43.21"	N 36° 54' 12.24" W 122° 11' 42.86"	0.1
	VOR: OSI	Available from N 36° 54' 5.57" W 122° 11' 43.21" to N 36° 54' 12.24" W 122° 11' 42.86"	
	VOR: SNS	Available from N 36° 54' 5.57" W 122° 11' 43.21" to N 36° 54' 12.24" W 122° 11' 42.86"	
	VOR: SJC	Available from N 36° 54' 5.57" W 122° 11' 43.21" to N 36° 54' 12.24" W 122° 11' 42.86"	
4	N 36° 55' 5.59" W 122° 11' 39.98"	N 36° 56' 25.62" W 122° 11' 35.67"	1.3
	VOR: OSI	Available from N 36° 55' 5.59" W 122° 11' 39.98" to N 36° 56' 25.62" W 122° 11' 35.67"	
	VOR: SNS	Available from N 36° 55' 5.59" W 122° 11' 39.98" to N 36° 56' 25.62" W 122° 11' 35.67"	
	VOR: SJC	Available from N 36° 55' 5.59" W 122° 11' 39.98" to N 36° 56' 25.62" W 122° 11' 35.67"	
5	N 36° 59' 52.36" W 122° 11' 24.53"	N 37° 11' 25.93" W 122° 10' 47.16"	11.6
	VOR: OSI	Available from N 36° 59' 52.36" W 122° 11' 24.53" to N 37° 11' 25.93" W 122° 10' 47.16"	
	VOR: SFO	Available from N 36° 59' 52.36" W 122° 11' 24.53" to N 37° 11' 25.93" W 122° 10' 47.16"	
	VOR: SFO	Available from N 36° 59' 52.36" W 122° 11' 24.53" to N 37° 11' 25.93" W 122° 10' 47.16"	
	VOR: SNS	Available from N 36° 59' 52.36" W 122° 11' 24.53" to N 37° 8' 32.54" W 122° 10' 56.52"	
	VOR: SJC	Available from N 36° 59' 52.36" W 122° 11' 24.53" to N 37° 11' 25.93" W 122° 10' 47.16"	
	VOR: OAK	Available from N 37° 3' 35.77" W 122° 11' 12.50" to N 37° 11' 25.93" W 122° 10' 47.16"	

Available DMEs by Waypoints		Return To Summary
Waypoint Before	Waypoint After	DME List
RW09(AER)	RW27(DER)	
RW27(DER)	GH09:	
GH09:	CHAAN	SNS
CHAAN	GARLK	SNS
GARLK	LISSY	OSI and SNS
LISSY	SAPID	SAU, OSI, OAK, and SNS

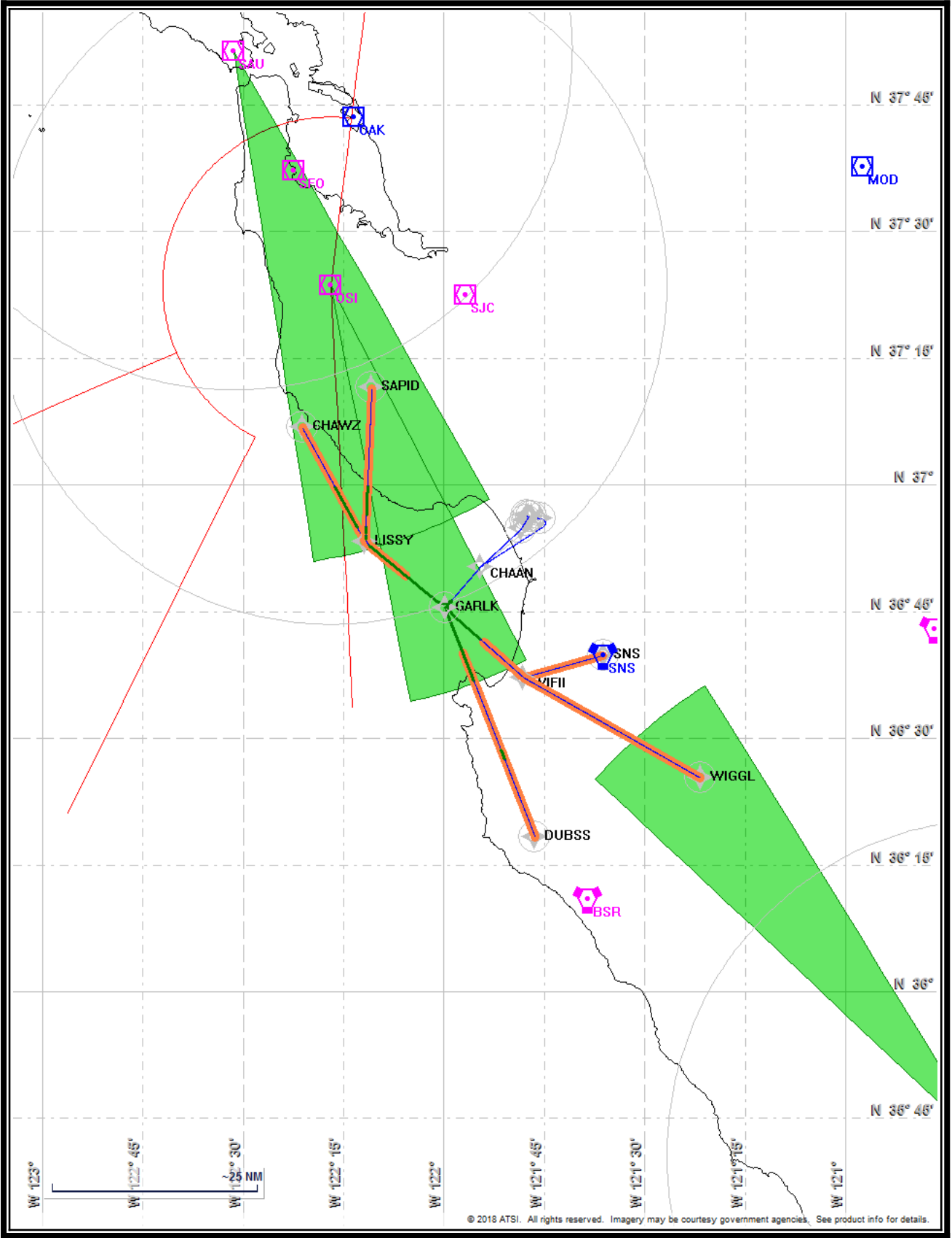
User Data					Return To Summary		
User Data Files							
#	File Name						
1	UserDMEs_KWVI SID.udt						
User DMEs							
#	Name	Lat/Lon/MAGVAR	Range	Elevation [ft]	Frequency	Replaces	Status
1	OSI	N 37° 23' 33.65" W 122° 16' 54.63" 17 E	L	2270.0	113.90	OSI	Used
Restriction:		Bearing [True]: 247.0° to 7.0° Bearing [Mag]: 230.0° to 350.0°			Distance: Beyond 20.0 NM Altitude: Below 99999.0 ft		
Restriction:		Bearing [True]: 207.0° to 247.0° Bearing [Mag]: 190.0° to 230.0°			Distance: Beyond 20.0 NM Altitude: Below 13000.0 ft		
Restriction:		Bearing [True]: 177.0° to 7.0° Bearing [Mag]: 160.0° to 350.0°			Distance: Beyond 0.0 NM Altitude: Below 11000.0 ft		
ESV:		Bearing [True]: 152.0° to 169.0° Bearing [Mag]: 135.0° to 152.0°			Arc Distance: Out to 50.0 NM Altitude: 4600.0 to 22000.0 ft		
2	SAU	N 37° 51' 19.20" W 122° 31' 21.91" 17 E	L	1040.0	116.20	SAU	Used
Restriction:		Bearing [True]: 298.0° to 336.0° Bearing [Mag]: 281.0° to 319.0°			Distance: Beyond 20.0 NM Altitude: Below 12000.0 ft		
Restriction:		Bearing [True]: 317.0° to 330.0° Bearing [Mag]: 300.0° to 313.0°			Distance: Beyond 10.0 NM Altitude: Below 12000.0 ft		
ESV:		Bearing [True]: 150.0° to 171.0° Bearing [Mag]: 133.0° to 154.0°			Arc Distance: Out to 61.0 NM Altitude: 4900.0 to 20000.0 ft		
3	PRB	N 35° 40' 20.87" W 120° 37' 37.59" 16 E	L	817.4	114.30	PRB	Not Used
Restriction:		Bearing [True]: 136.0° to 156.0° Bearing [Mag]: 120.0° to 140.0°			Distance: Beyond 27.0 NM Altitude: Below 8000.0 ft		
ESV:		Bearing [True]: 313.0° to 328.0° Bearing [Mag]: 297.0° to 312.0°			Arc Distance: Out to 66.0 NM Altitude: 6100.0 to 20000.0 ft		



Name: Bruce Connolly
Project Name: Watsonville SID
Output File: KWVI GARLK SID RW09
 SNS 20180604_1434
Procedure Name: GARLK
Software: RNAV-Pro™
Version: 2.39
Date/Time: 6/4/2018 2:40:50 PM
Input File: KWVI GARLK SID RW09
 SNS.txt
Databases: AIRNAV Date: 5/23/2018
 CIFP Date: 5/24/2018
 DTED® (MAX) Date: 2002

Results Summary:

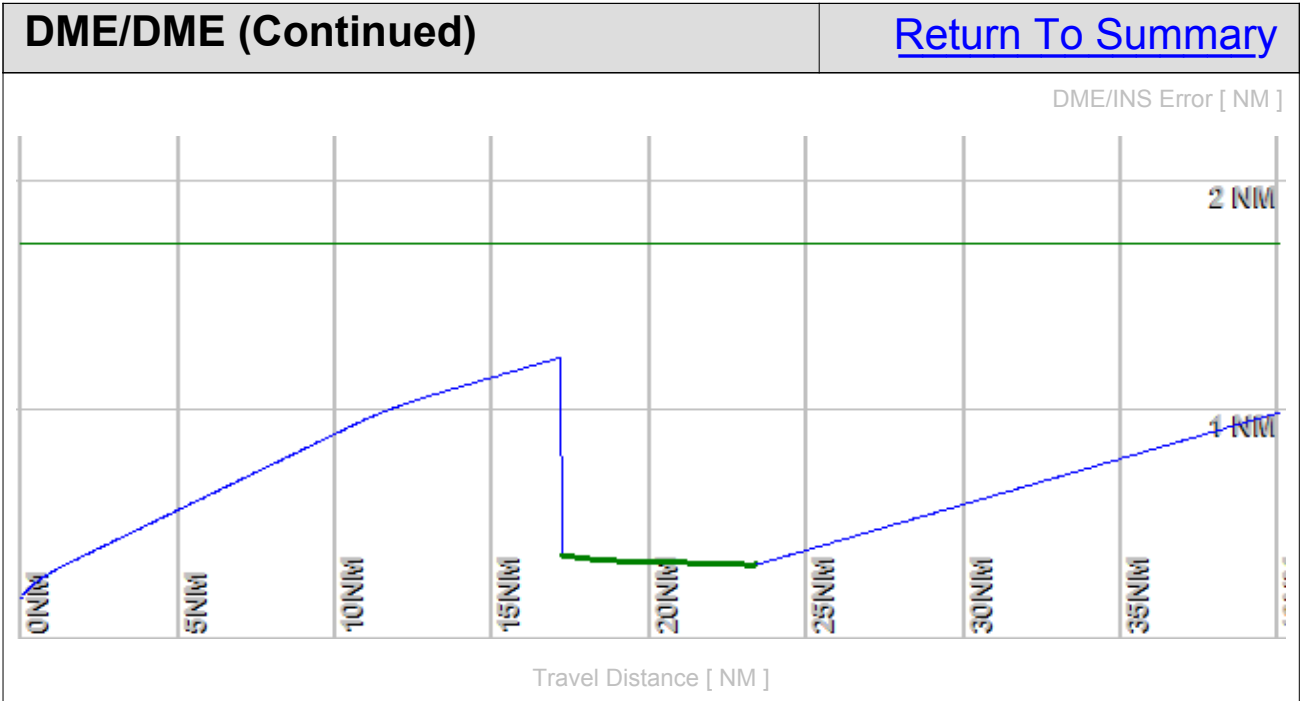
Flyability	✓	Please Check Flyability Results
DME/DME	✓	2 Critical DMEs Exist: OSI SNS
Radars	?	
Comms	?	
TERPS	?	



Flight Plan					Return To Summary		
Name	Type	Lat/Lon	Alt [ft]	VNAV Mode	IAS [Kts]	Turn Type	Leg Type
RW09(A...	WP	N 36° 56' 17.98" W 121° 47' 38.66"	163.2	VNAV	0.0	Fly Over	TF
RW27(D...	WP	N 36° 56' 11.24" W 121° 46' 50.14"	171.2	VNAV	130.0	Fly Over	VA
GH09:	WP	N 36° 56' 0.41" W 121° 45' 32.30"	700.0	VNAV	145.0	Fly Over	DF
CHAAAN	WP	N 36° 50' 15.78" W 121° 54' 36.04"	2854.5	VNAV	145.0	Fly By	TF
GARLK	WP	N 36° 45' 25.97" W 121° 59' 50.24"	5000.0	VNAV	180.0	Fly By	TF
WIFII	WP	N 36° 37' 11.39" W 121° 48' 6.77"	5000.0	VNAV	180.0	Fly By	TF
SNS	WP	N 36° 39' 49.81" W 121° 36' 11.46"	5000.0	VNAV	180.0	Fly Over	TF
Climb Gradient: 500.0 ft/NM up to 664.0 ft MSL							

Flyability		Return To Summary
Settings:	Flight Type: Runway Departure	
	Selected Airport: KWVI	
	Aircraft Category: Cat D	
	Climb Gradient: 500.0 ft/NM up to 664.0 ft MSL	
	Ground Speeds:	
	Departure: 120.0 Kts out to 10.0 NM	
	Table:	
	200.0 Kts up to 11000.0 ft	
	240.0 Kts up to 18000.0 ft	
	260.0 Kts up to 24000.0 ft	
	340.0 Kts up to 99900.0 ft	
	Wind Settings: <i>None assigned</i>	
	Descent During a Turn: Allowed	
	VNAV Mode: Flight Plan	
Required IAS at Fly-By WP CHAAN could not be reached with given A/C acceleration performance.		
Flight Track comes into contact with terrain. Minimum AGL along route was -13.97 Ft.		
Flight Track contacted terrain (DTED 0 MAX) between AER and DER or within 2/3 NM of DER.		

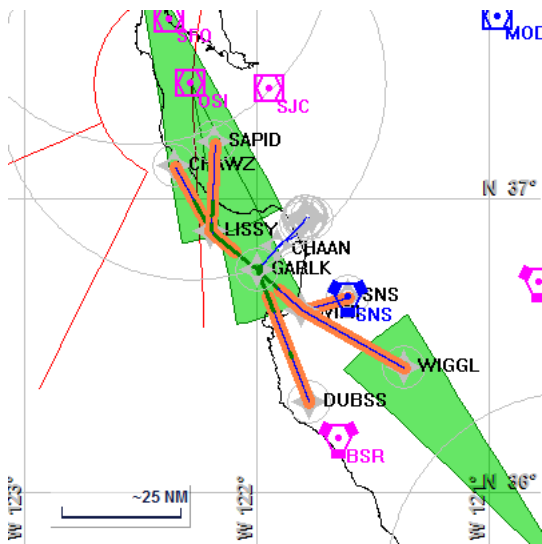
DME/DME		Return To Summary
Settings:	RNP: 2.0	
	Flight Mode: Manual	
	Line of Sight (DTED Level 0 Max):	Evaluated
	DME Restrictions:	Evaluated
	Inertial Drift:	Enabled
	Initial Drift:	0.165 NM
	INS Drift Rate:	8.000 NM/Hour
	Range Mode:	OSV
	Co-Frequencies:	Evaluated
	RNP Edges:	Evaluated
	Min DME Range:	3.0 NM
	Allowed Gap Length:	4.0 NM
	DME Types:	VOR/DME, VORTAC, Standalone, and User
	DME Include Angles:	30 to 150
	Critical DMEs:	Allowed
DoD Facilities:	Not included	
Foreign Facilities:	Not included	
Low DMEs:	Included	
Terminal DMEs:	Included	
Flight Check DMEs:	Selected	
Higher Altitudes:	Evaluated	
Near Maximum Altitude:	Evaluated	
Minimum MSL DMEs Avail:	4605 ft	
Total Number of DMEs Used: 2		
Maximum DME Error: 1.229 NM.		
2 Critical DMEs were found.		
Available DMEs: SNS, OSI		



DME/DME (Continued)						Return To Summary			
DMEs Used									
#	Name	Lat/Lon/MAGVAR	Range	Source	Critical	Err. [NM]	Status	Time	Distance
1	OSI	N 37° 23' 33.65" W 122° 16' 54.63" 17 E	L + ESV	User	YES	2.147	Enabled	12.6%	15.5%
2	SNS	N 36° 39' 49.81" W 121° 36' 11.46" 17 E	H	Database	YES	2.147	Enabled	12.6%	15.5%
	Total Coverage							12.6%	15.5%
Flight Check DME Selection									
Distance [NM]		Selected DMEs						Alternate	
0.0									
0.7									
1.7		SNS							
11.5		SNS							
16.9		SNS	OSI						
29.4		SNS							
Inertial Drift Segments									
#	Start Location			End Location			Length [NM]		
1	N 36° 56' 17.98" W 121° 47' 38.66"			N 36° 46' 21.21" W 121° 58' 48.96"			17.1		
VOR: OSI				Available from N 36° 56' 17.98" W 121° 47' 38.66" to N 36° 46' 21.21" W 121° 58' 48.96"					
VOR: SNS				Available from N 36° 56' 17.98" W 121° 47' 38.66" to N 36° 46' 21.21" W 121° 58' 48.96"					
VOR: SJC				Available from N 36° 56' 17.98" W 121° 47' 38.66" to N 36° 46' 21.21" W 121° 58' 48.96"					
VOR: BSR				Available from N 36° 48' 2.31" W 121° 57' 0.59" to N 36° 46' 21.21" W 121° 58' 48.96"					
2	N 36° 41' 42.70" W 121° 54' 32.66"			N 36° 39' 49.38" W 121° 36' 13.39"			16.7		
VOR: BSR				Available from N 36° 41' 42.70" W 121° 54' 32.66" to N 36° 39' 49.38" W 121° 36' 13.39"					
VOR: SNS				Available from N 36° 41' 42.70" W 121° 54' 32.66" to N 36° 39' 49.38" W 121° 36' 13.39"					
VOR: PXN				Available from N 36° 39' 48.49" W 121° 36' 17.38" to N 36° 39' 49.38" W 121° 36' 13.39"					

Available DMEs by Waypoints		Return To Summary
Waypoint Before	Waypoint After	DME List
RW09(AER)	RW27(DER)	
RW27(DER)	GH09:	
GH09:	CHAAN	SNS
CHAAN	GARLK	SNS
GARLK	WIFII	OSI and SNS
WIFII	SNS	SNS

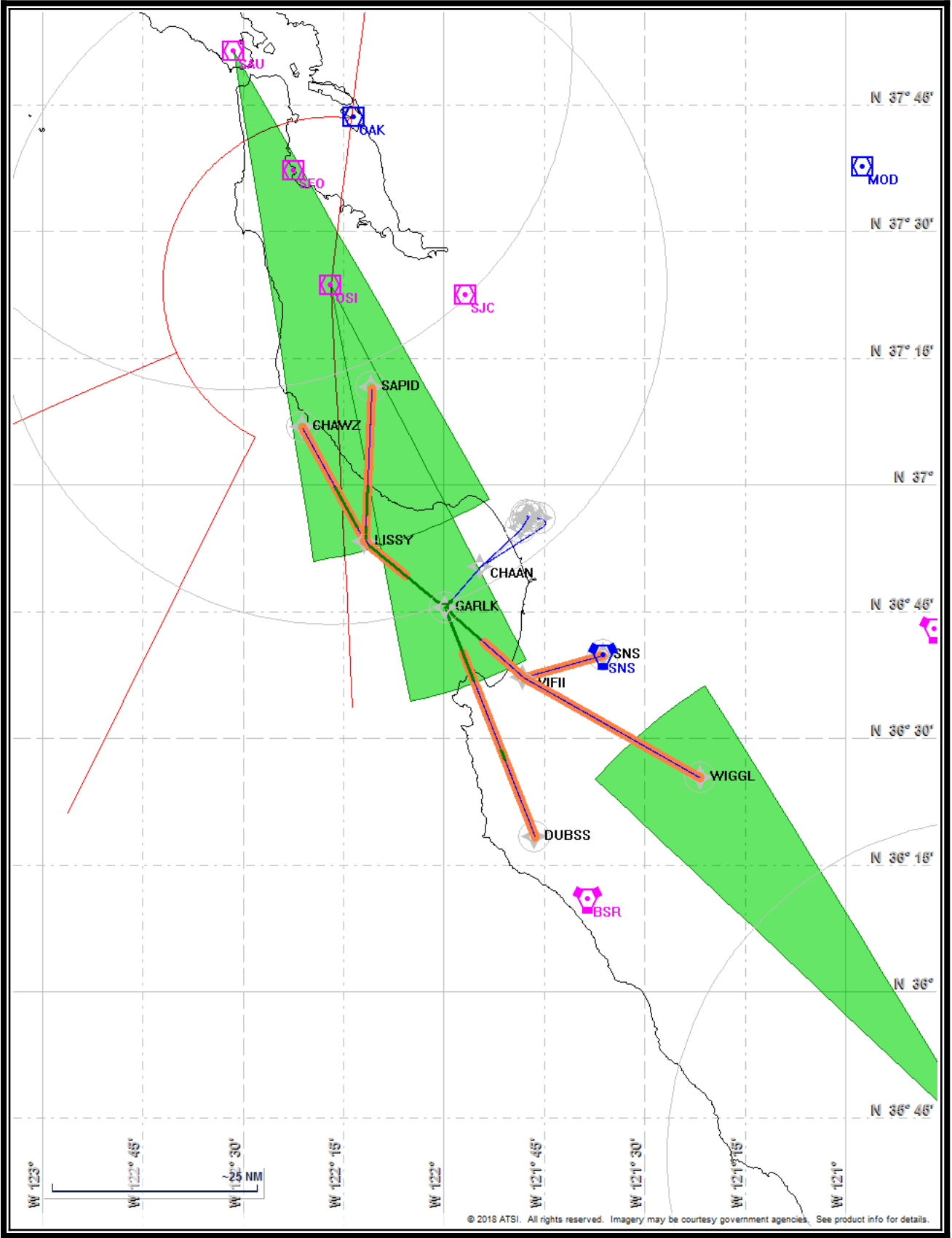
User Data					Return To Summary		
User Data Files							
#	File Name						
1	UserDMEs_KWVI SID.udt						
User DMEs							
#	Name	Lat/Lon/MAGVAR	Range	Elevation [ft]	Frequency	Replaces	Status
1	OSI	N 37° 23' 33.65" W 122° 16' 54.63" 17 E	L	2270.0	113.90	OSI	Used
Restriction:		Bearing [True]: 247.0° to 7.0° Bearing [Mag]: 230.0° to 350.0°			Distance: Beyond 20.0 NM Altitude: Below 99999.0 ft		
Restriction:		Bearing [True]: 207.0° to 247.0° Bearing [Mag]: 190.0° to 230.0°			Distance: Beyond 20.0 NM Altitude: Below 13000.0 ft		
Restriction:		Bearing [True]: 177.0° to 7.0° Bearing [Mag]: 160.0° to 350.0°			Distance: Beyond 0.0 NM Altitude: Below 11000.0 ft		
ESV:		Bearing [True]: 152.0° to 169.0° Bearing [Mag]: 135.0° to 152.0°			Arc Distance: Out to 50.0 NM Altitude: 4600.0 to 22000.0 ft		
2	SAU	N 37° 51' 19.20" W 122° 31' 21.91" 17 E	L	1040.0	116.20	SAU	Not Used
Restriction:		Bearing [True]: 298.0° to 336.0° Bearing [Mag]: 281.0° to 319.0°			Distance: Beyond 20.0 NM Altitude: Below 12000.0 ft		
Restriction:		Bearing [True]: 317.0° to 330.0° Bearing [Mag]: 300.0° to 313.0°			Distance: Beyond 10.0 NM Altitude: Below 12000.0 ft		
ESV:		Bearing [True]: 150.0° to 171.0° Bearing [Mag]: 133.0° to 154.0°			Arc Distance: Out to 61.0 NM Altitude: 4900.0 to 20000.0 ft		
3	PRB	N 35° 40' 20.87" W 120° 37' 37.59" 16 E	L	817.4	114.30	PRB	Not Used
Restriction:		Bearing [True]: 136.0° to 156.0° Bearing [Mag]: 120.0° to 140.0°			Distance: Beyond 27.0 NM Altitude: Below 8000.0 ft		
ESV:		Bearing [True]: 313.0° to 328.0° Bearing [Mag]: 297.0° to 312.0°			Arc Distance: Out to 66.0 NM Altitude: 6100.0 to 20000.0 ft		



Name: Bruce Connolly
Project Name: Watsonville SID
Output File: KWVI GARLK SID RW09
WIGGL 20180604_1434
Procedure Name: GARLK
Software: RNAV-Pro™
Version: 2.39
Date/Time: 6/4/2018 2:44:20 PM
Input File: KWVI GARLK SID RW09
WIGGL.txt
Databases: AIRNAV Date: 5/23/2018
CIFP Date: 5/24/2018
DTED® (MAX) Date: 2002

Results Summary:

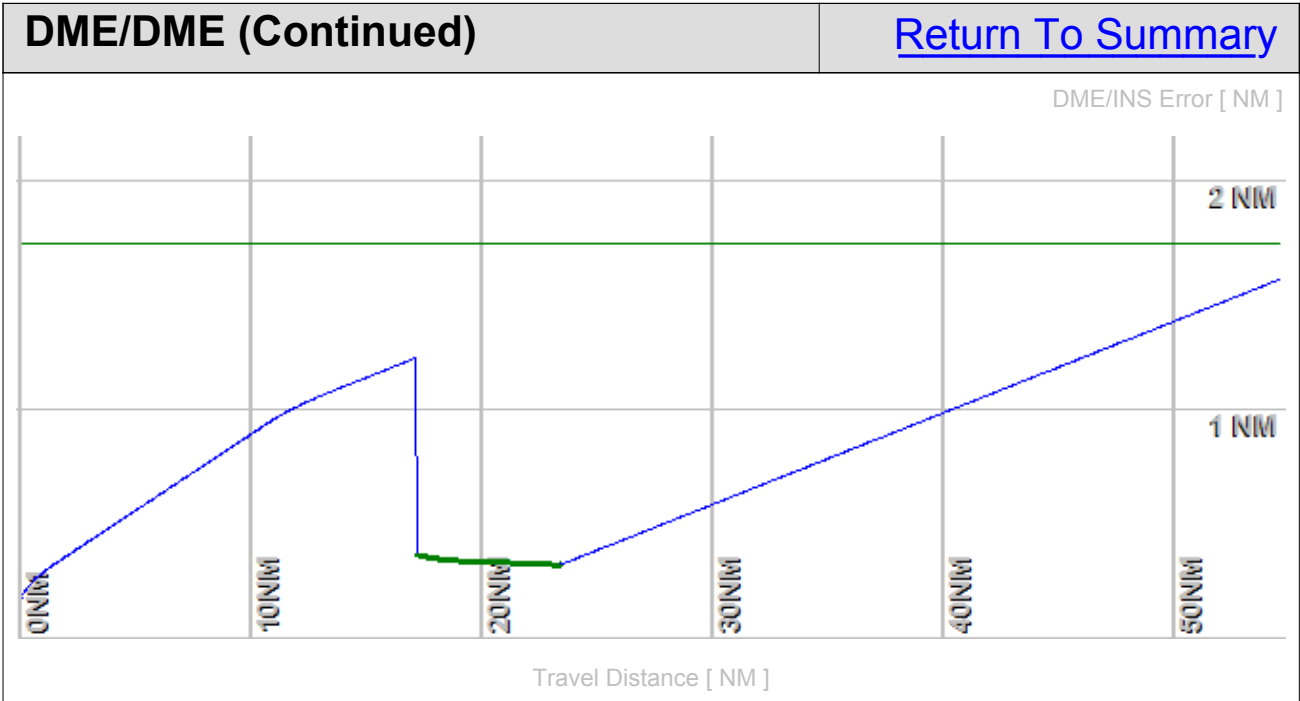
Flyability	✓	Please Check Flyability Results
DME/DME	✓	2 Critical DMEs Exist: OSI SNS
Radars	?	
Comms	?	
TERPS	?	



Flight Plan					Return To Summary		
Name	Type	Lat/Lon	Alt [ft]	VNAV Mode	IAS [Kts]	Turn Type	Leg Type
RW09(A...	WP	N 36° 56' 17.98" W 121° 47' 38.66"	163.2	VNAV	0.0	Fly Over	TF
RW27(D...	WP	N 36° 56' 11.24" W 121° 46' 50.14"	171.2	VNAV	130.0	Fly Over	VA
GH09:	WP	N 36° 56' 0.41" W 121° 45' 32.30"	700.0	VNAV	145.0	Fly Over	DF
CHAAAN	WP	N 36° 50' 15.78" W 121° 54' 36.04"	2854.0	VNAV	145.0	Fly By	TF
GARLK	WP	N 36° 45' 25.97" W 121° 59' 50.24"	5000.0	VNAV	180.0	Fly By	TF
WIFII	WP	N 36° 37' 11.39" W 121° 48' 6.77"	5000.0	VNAV	180.0	Fly By	TF
WIGGL	WP	N 36° 25' 17.04" W 121° 21' 41.22"	6700.0	VNAV	180.0	Fly Over	TF
Climb Gradient: 500.0 ft/NM up to 664.0 ft MSL							

Flyability		Return To Summary
Settings:	Flight Type: Runway Departure Selected Airport: KWVI Aircraft Category: Cat D Climb Gradient: 500.0 ft/NM up to 664.0 ft MSL Ground Speeds: Departure: 120.0 Kts out to 10.0 NM Table: 200.0 Kts up to 11000.0 ft 240.0 Kts up to 18000.0 ft 260.0 Kts up to 24000.0 ft 340.0 Kts up to 99900.0 ft Wind Settings: <i>None assigned</i> Descent During a Turn: Allowed VNAV Mode: Flight Plan	
	<p>Required IAS at Fly-By WP CHAAN could not be reached with given A/C acceleration performance.</p> <p>Flight Track comes into contact with terrain. Minimum AGL along route was -13.97 Ft. Flight Track contacted terrain (DTED 0 MAX) between AER and DER or within 2/3 NM of DER.</p>	

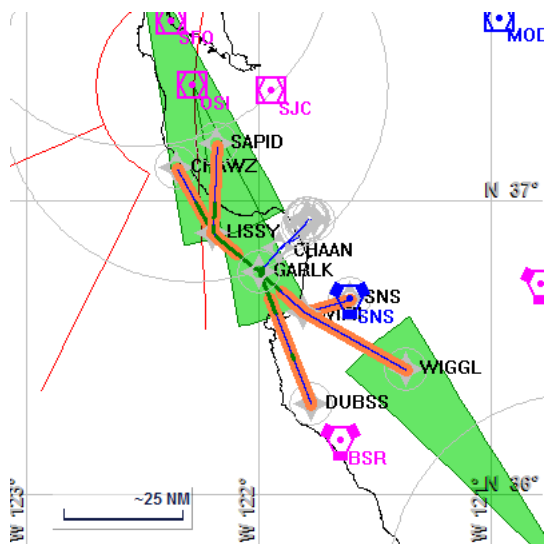
DME/DME		Return To Summary
Settings:	RNP: 2.0	
	Flight Mode: Manual	
	Line of Sight (DTED Level 0 Max): Evaluated	
	DME Restrictions: Evaluated	
	Inertial Drift: Enabled	
	Initial Drift: 0.165 NM	
	INS Drift Rate: 8.000 NM/Hour	
	Range Mode: OSV	
	Co-Frequencies: Evaluated	
	RNP Edges: Evaluated	
	Min DME Range: 3.0 NM	
	Allowed Gap Length: 4.0 NM	
	DME Types: VOR/DME, VORTAC, Standalone, and User	
	DME Include Angles: 30 to 150	
	Critical DMEs: Allowed	
DoD Facilities: Not included		
Foreign Facilities: Not included		
Low DMEs: Included		
Terminal DMEs: Included		
Flight Check DMEs: Selected		
Higher Altitudes: Evaluated		
Near Maximum Altitude: Evaluated		
Minimum MSL DMEs Avail: 4605 ft		
Total Number of DMEs Used: 2		
Maximum DME Error: 1.574 NM.		
2 Critical DMEs were found.		
Available DMEs: SNS, OSI, PRB		



DME/DME (Continued)						Return To Summary			
DMEs Used									
#	Name	Lat/Lon/MAGVAR	Range	Source	Critical	Err. [NM]	Status	Time	Distance
1	OSI	N 37° 23' 33.65" W 122° 16' 54.63" 17 E	L + ESV	User	YES	2.729	Enabled	9.7%	11.4%
2	SNS	N 36° 39' 49.81" W 121° 36' 11.46" 17 E	H	Database	YES	2.729	Enabled	9.7%	11.4%
	Total Coverage							9.7%	11.4%
Flight Check DME Selection									
Distance [NM]		Selected DMEs						Alternate	
0.0									
0.7									
1.7		SNS							
11.5		SNS							
16.9		SNS	OSI						
29.9		SNS	PRB						
Inertial Drift Segments									
#	Start Location			End Location			Length [NM]		
1	N 36° 56' 17.98" W 121° 47' 38.66"			N 36° 46' 21.21" W 121° 58' 48.96"			17.1		
VOR: OSI				Available from N 36° 56' 17.98" W 121° 47' 38.66" to N 36° 46' 21.21" W 121° 58' 48.96"					
VOR: SNS				Available from N 36° 56' 17.98" W 121° 47' 38.66" to N 36° 46' 21.21" W 121° 58' 48.96"					
VOR: SJC				Available from N 36° 56' 17.98" W 121° 47' 38.66" to N 36° 46' 21.21" W 121° 58' 48.96"					
VOR: BSR				Available from N 36° 48' 2.31" W 121° 57' 0.59" to N 36° 46' 21.21" W 121° 58' 48.96"					
2	N 36° 41' 42.70" W 121° 54' 32.66"			N 36° 25' 18.14" W 121° 21' 43.64"			31.2		
VOR: BSR				Available from N 36° 41' 42.70" W 121° 54' 32.66" to N 36° 25' 18.14" W 121° 21' 43.64"					
VOR: SNS				Available from N 36° 41' 42.70" W 121° 54' 32.66" to N 36° 25' 18.14" W 121° 21' 43.64"					
VOR: PXN				Available from N 36° 30' 53.91" W 121° 34' 6.57" to N 36° 25' 18.14" W 121° 21' 43.64"					
VOR: ROM				Available from N 36° 26' 21.81" W 121° 24' 4.14" to N 36° 25' 18.14" W 121° 21' 43.64"					

Available DMEs by Waypoints		Return To Summary
Waypoint Before	Waypoint After	DME List
RW09(AER)	RW27(DER)	
RW27(DER)	GH09:	
GH09:	CHAAN	SNS
CHAAN	GARLK	SNS
GARLK	WIFII	OSI and SNS
WIFII	WIGGL	PRB and SNS

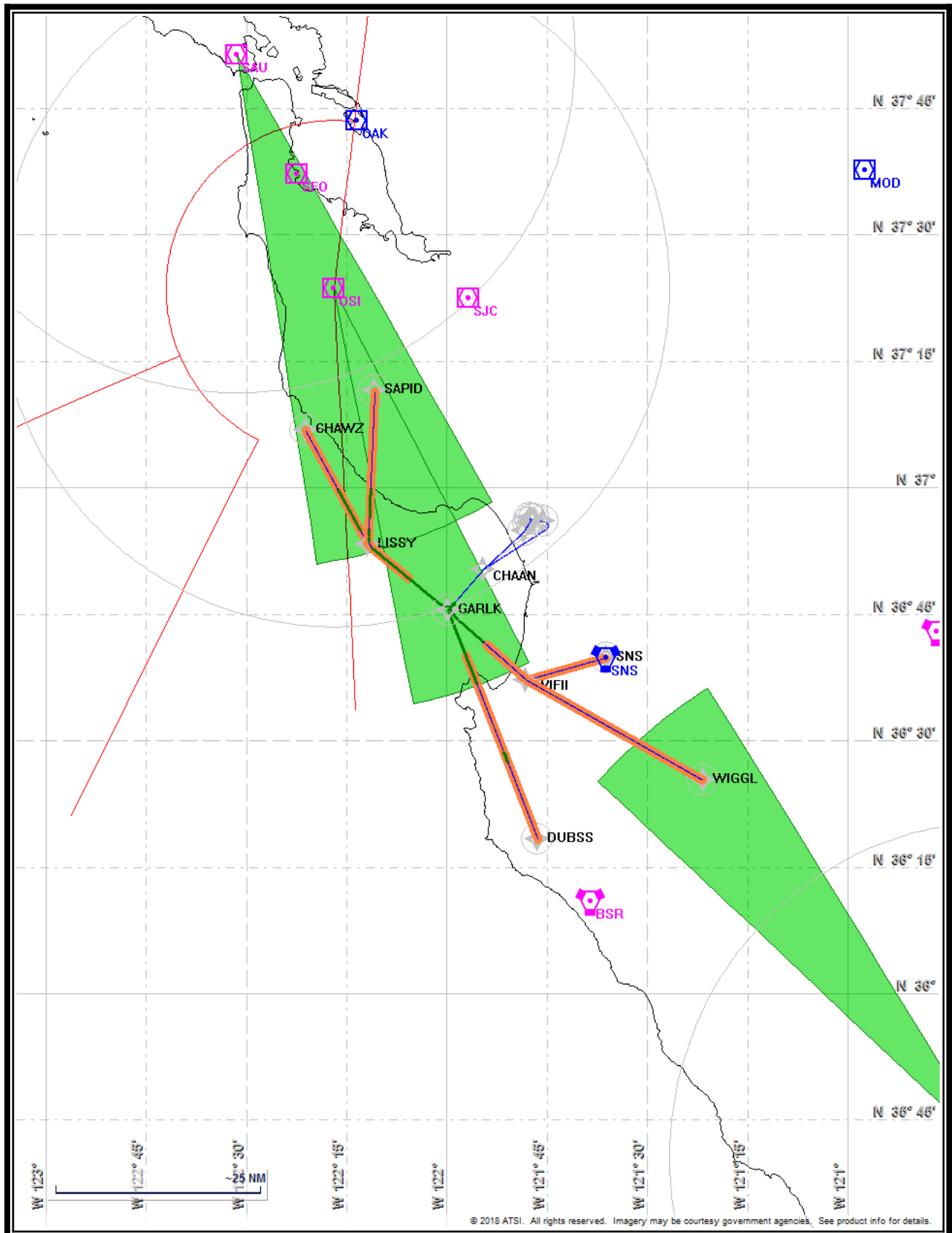
User Data					Return To Summary		
User Data Files							
#	File Name						
1	UserDMEs_KWVI SID.udt						
User DMEs							
#	Name	Lat/Lon/MAGVAR	Range	Elevation [ft]	Frequency	Replaces	Status
1	OSI	N 37° 23' 33.65" W 122° 16' 54.63" 17 E	L	2270.0	113.90	OSI	Used
		Restriction:	Bearing [True]: 247.0° to 7.0° Bearing [Mag]: 230.0° to 350.0°		Distance: Beyond 20.0 NM Altitude: Below 99999.0 ft		
		Restriction:	Bearing [True]: 207.0° to 247.0° Bearing [Mag]: 190.0° to 230.0°		Distance: Beyond 20.0 NM Altitude: Below 13000.0 ft		
		Restriction:	Bearing [True]: 177.0° to 7.0° Bearing [Mag]: 160.0° to 350.0°		Distance: Beyond 0.0 NM Altitude: Below 11000.0 ft		
		ESV:	Bearing [True]: 152.0° to 169.0° Bearing [Mag]: 135.0° to 152.0°		Arc Distance: Out to 50.0 NM Altitude: 4600.0 to 22000.0 ft		
2	SAU	N 37° 51' 19.20" W 122° 31' 21.91" 17 E	L	1040.0	116.20	SAU	Not Used
		Restriction:	Bearing [True]: 298.0° to 336.0° Bearing [Mag]: 281.0° to 319.0°		Distance: Beyond 20.0 NM Altitude: Below 12000.0 ft		
		Restriction:	Bearing [True]: 317.0° to 330.0° Bearing [Mag]: 300.0° to 313.0°		Distance: Beyond 10.0 NM Altitude: Below 12000.0 ft		
		ESV:	Bearing [True]: 150.0° to 171.0° Bearing [Mag]: 133.0° to 154.0°		Arc Distance: Out to 61.0 NM Altitude: 4900.0 to 20000.0 ft		
3	PRB	N 35° 40' 20.87" W 120° 37' 37.59" 16 E	L	817.4	114.30	PRB	Not Used
		Restriction:	Bearing [True]: 136.0° to 156.0° Bearing [Mag]: 120.0° to 140.0°		Distance: Beyond 27.0 NM Altitude: Below 8000.0 ft		
		ESV:	Bearing [True]: 313.0° to 328.0° Bearing [Mag]: 297.0° to 312.0°		Arc Distance: Out to 66.0 NM Altitude: 6100.0 to 20000.0 ft		



Name: Bruce Connolly
Project Name: Watsonville SID
Output File: KWVI GARLK SID RW20
 GARLK 20180604_1434
Procedure Name: GARLK
Software: RNAV-Pro™
Version: 2.39
Date/Time: 6/4/2018 2:46:02 PM
Input File: KWVI GARLK SID RW20
 GARLK.txt
Databases: AIRNAV Date: 5/23/2018
 CIPF Date: 5/24/2018
 DTED® (MAX) Date: 2002

Results Summary:

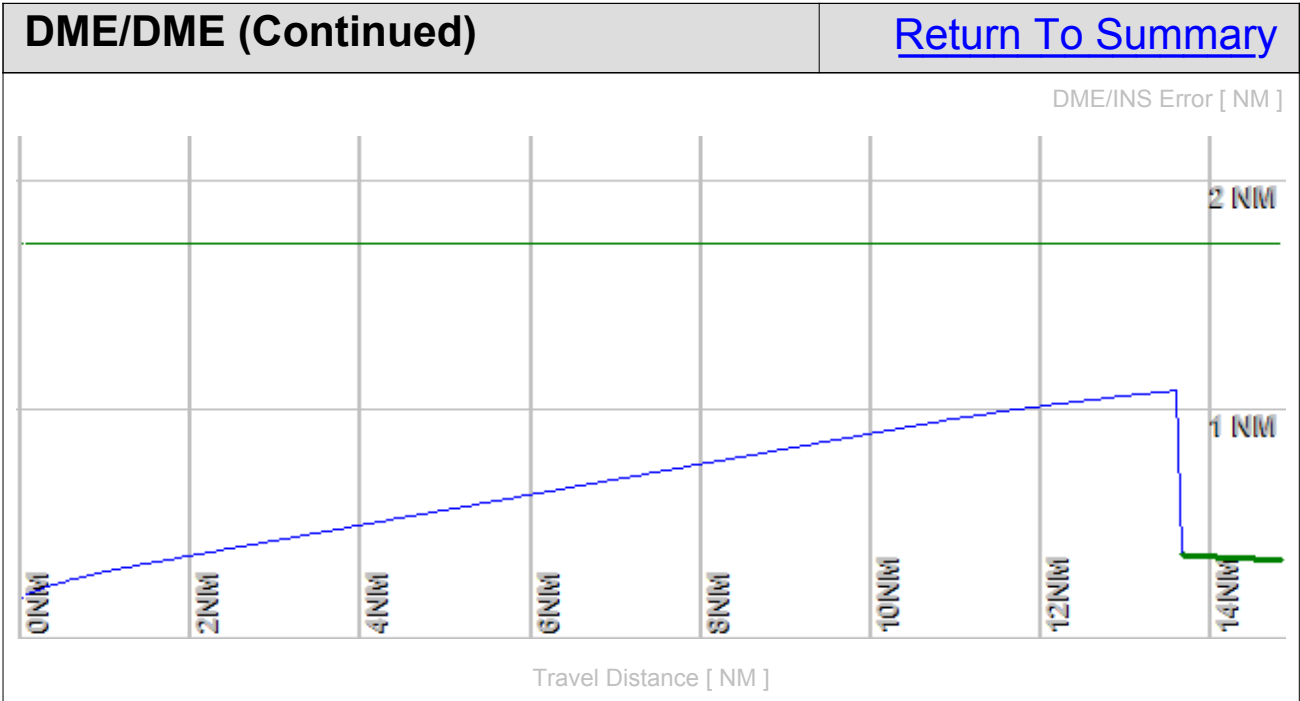
Flyability	✓	Please Check Flyability Results
DME/DME	✓	No Critical DMEs Exist
Radars	?	
Comms	?	
TERPS	?	



Flight Plan					Return To Summary		
Name	Type	Lat/Lon	Alt [ft]	VNAV Mode	IAS [Kts]	Turn Type	Leg Type
RW20(A...	WP	N 36° 56' 17.21" W 121° 47' 19.11"	157.3	VNAV	0.0	Fly Over	TF
RW02(D...	WP	N 36° 55' 44.53" W 121° 47' 44.86"	174.4	VNAV	130.0	Fly Over	VA
GH20:	WP	N 36° 54' 51.26" W 121° 48' 26.83"	700.0	VNAV	145.0	Fly Over	DF
CHAAAN	WP	N 36° 50' 15.78" W 121° 54' 36.04"	2854.5	VNAV	145.0	Fly By	TF
GARLK	WP	N 36° 45' 25.97" W 121° 59' 50.24"	5000.0	VNAV	180.0	Fly Over	TF
Climb Gradient: 500.0 ft/NM up to 664.0 ft MSL							

Flyability		Return To Summary
Settings:	Flight Type: Runway Departure Selected Airport: KWVI Aircraft Category: Cat D Climb Gradient: 500.0 ft/NM up to 664.0 ft MSL Ground Speeds: Departure: 120.0 Kts out to 10.0 NM Table: 200.0 Kts up to 11000.0 ft 240.0 Kts up to 18000.0 ft 260.0 Kts up to 24000.0 ft 340.0 Kts up to 99900.0 ft Wind Settings: <i>None assigned</i> Descent During a Turn: Allowed VNAV Mode: Flight Plan	
	Flight Track comes into contact with terrain. Minimum AGL along route was -19.87 Ft. Flight Track contacted terrain (DTED 0 MAX) between AER and DER or within 2/3 NM of DER.	

DME/DME		Return To Summary
Settings:	RNP: 2.0	
	Flight Mode: Manual	
	Line of Sight (DTED Level 0 Max): Evaluated	
	DME Restrictions: Evaluated	
	Inertial Drift: Enabled	
	Initial Drift: 0.165 NM	
	INS Drift Rate: 8.000 NM/Hour	
	Range Mode: OSV	
	Co-Frequencies: Evaluated	
	RNP Edges: Evaluated	
	Min DME Range: 3.0 NM	
	Allowed Gap Length: 4.0 NM	
	DME Types: VOR/DME, VORTAC, Standalone, and User	
	DME Include Angles: 30 to 150	
	Critical DMEs: Allowed	
DoD Facilities: Not included		
Foreign Facilities: Not included		
Low DMEs: Included		
Terminal DMEs: Included		
Flight Check DMEs: Selected		
Higher Altitudes: Evaluated		
Near Maximum Altitude: Evaluated		
Minimum MSL DMEs Avail: 4605 ft		
Total Number of DMEs Used: 2		
Maximum DME Error: 1.087 NM.		
No Critical DMEs were found.		
Available DMEs: SNS, OSI		



DME/DME (Continued)						Return To Summary			
DMEs Used									
#	Name	Lat/Lon/MAGVAR	Range	Source	Critical	Err. [NM]	Status	Time	Distance
1	OSI	N 37° 23' 33.65" W 122° 16' 54.63" 17 E	L + ESV	User	NO	1.136	Enabled	5.0%	8.2%
2	SNS	N 36° 39' 49.81" W 121° 36' 11.46" 17 E	H	Database	NO	1.136	Enabled	5.0%	8.2%
	Total Coverage							5.0%	8.2%
Flight Check DME Selection									
Distance [NM]		Selected DMEs						Alternate	
0.0									
0.7									
1.7		SNS							
8.3		SNS	OSI						
Inertial Drift Segments									
#	Start Location			End Location			Length [NM]		
1	N 36° 56' 17.21" W 121° 47' 19.11"			N 36° 46' 21.80" W 121° 58' 49.86"			13.6		
VOR: OSI				Available from N 36° 56' 17.21" W 121° 47' 19.11" to N 36° 46' 21.80" W 121° 58' 49.86"					
VOR: SNS				Available from N 36° 56' 17.21" W 121° 47' 19.11" to N 36° 46' 21.80" W 121° 58' 49.86"					
VOR: SJC				Available from N 36° 56' 17.21" W 121° 47' 19.11" to N 36° 46' 21.80" W 121° 58' 49.86"					
VOR: BSR				Available from N 36° 48' 2.32" W 121° 57' 1.01" to N 36° 46' 21.80" W 121° 58' 49.86"					

Available DMEs by Waypoints		Return To Summary
Waypoint Before	Waypoint After	DME List
RW20(AER)	RW02(DER)	
RW02(DER)	GH20:	
GH20:	CHAAN	SNS
CHAAN	GARLK	OSI and SNS

User Data					Return To Summary		
User Data Files							
#	File Name						
1	UserDMEs_KWVI SID.udt						
User DMEs							
#	Name	Lat/Lon/MAGVAR	Range	Elevation [ft]	Frequency	Replaces	Status
1	OSI	N 37° 23' 33.65" W 122° 16' 54.63" 17 E	L	2270.0	113.90	OSI	Used
Restriction:		Bearing [True]: 247.0° to 7.0° Bearing [Mag]: 230.0° to 350.0°			Distance: Beyond 20.0 NM Altitude: Below 99999.0 ft		
Restriction:		Bearing [True]: 207.0° to 247.0° Bearing [Mag]: 190.0° to 230.0°			Distance: Beyond 20.0 NM Altitude: Below 13000.0 ft		
Restriction:		Bearing [True]: 177.0° to 7.0° Bearing [Mag]: 160.0° to 350.0°			Distance: Beyond 0.0 NM Altitude: Below 11000.0 ft		
ESV:		Bearing [True]: 152.0° to 169.0° Bearing [Mag]: 135.0° to 152.0°			Arc Distance: Out to 50.0 NM Altitude: 4600.0 to 22000.0 ft		
2	SAU	N 37° 51' 19.20" W 122° 31' 21.91" 17 E	L	1040.0	116.20	SAU	Not Used
Restriction:		Bearing [True]: 298.0° to 336.0° Bearing [Mag]: 281.0° to 319.0°			Distance: Beyond 20.0 NM Altitude: Below 12000.0 ft		
Restriction:		Bearing [True]: 317.0° to 330.0° Bearing [Mag]: 300.0° to 313.0°			Distance: Beyond 10.0 NM Altitude: Below 12000.0 ft		
ESV:		Bearing [True]: 150.0° to 171.0° Bearing [Mag]: 133.0° to 154.0°			Arc Distance: Out to 61.0 NM Altitude: 4900.0 to 20000.0 ft		
3	PRB	N 35° 40' 20.87" W 120° 37' 37.59" 16 E	L	817.4	114.30	PRB	Not Used
Restriction:		Bearing [True]: 136.0° to 156.0° Bearing [Mag]: 120.0° to 140.0°			Distance: Beyond 27.0 NM Altitude: Below 8000.0 ft		
ESV:		Bearing [True]: 313.0° to 328.0° Bearing [Mag]: 297.0° to 312.0°			Arc Distance: Out to 66.0 NM Altitude: 6100.0 to 20000.0 ft		