

Name: MARK SCHOENHOFF
Project Name: Q39
Output File: Q39 NORTH CLAWD
 ASERY 20170427_0823
Procedure Name: NORTH
Software: RNAV-Pro™
Version: 2.39g
Date/Time: 4/27/2017 8:24:57 AM
Input File: NC_WV
 Q39_REVISED NORTH
 Q-ROUTE CLAWD ASERY
 20160120_1246.txt
Databases: AIRNAV Date: 4/16/2017
 CIFP Date: 8/18/2016
 DTED® (MAX) Date: 2002

Results Summary:

Flyability



DME/DME



No Critical DMEs Exist

Radars

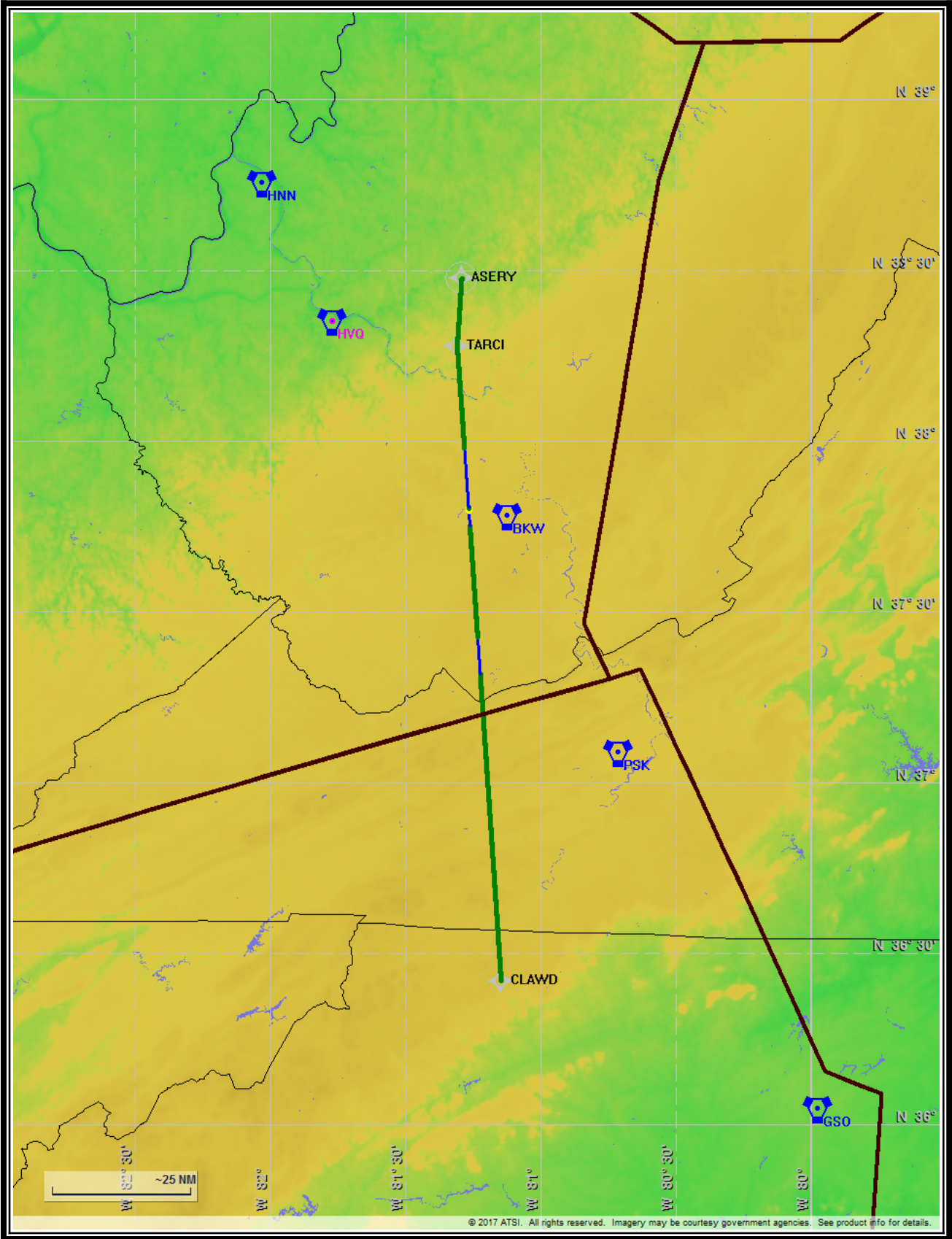


Comms



TERPS

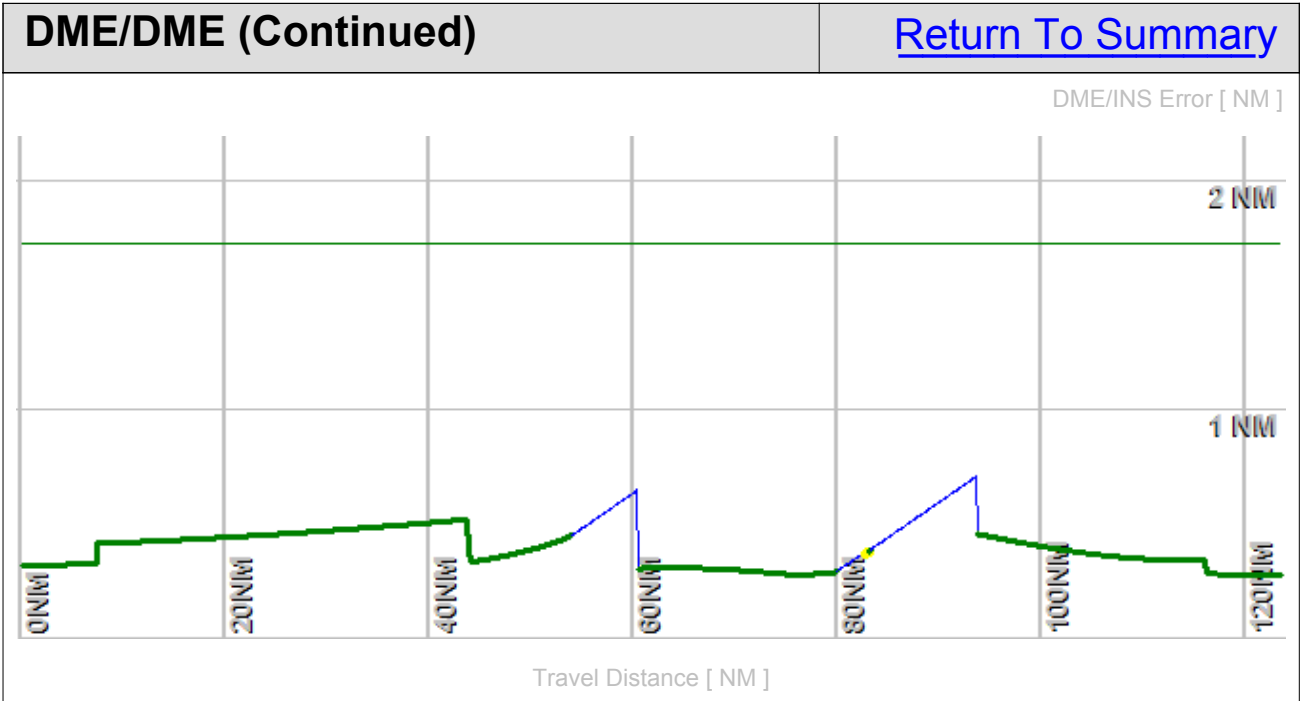




Flight Plan					Return To Summary		
Name	Type	Lat/Lon	Alt [ft]	VNAV Mode	IAS [Kts]	Turn Type	Leg Type
CLAWD	WP	N 36° 25' 8.98" W 81° 8' 49.75"	18000.0	Step	250.0	Fly By	TF
TARCI	WP	N 38° 16' 36.08" W 81° 18' 34.08"	18000.0	Step	250.0	Fly By	TF
ASERY	WP	N 38° 28' 35.97" W 81° 17' 34.14"	18000.0	Step	250.0	Fly Over	TF

Flyability		Return To Summary
Settings:	Flight Type: EnRoute Aircraft Category: Cat D Climb Gradient: <i>None assigned</i> Ground Speeds: Table: 200.0 Kts up to 11000.0 ft 240.0 Kts up to 18000.0 ft 260.0 Kts up to 24000.0 ft 340.0 Kts up to 99900.0 ft Wind Settings: <i>None assigned</i> Descent During a Turn: Allowed VNAV Mode: Flight Plan	
Entire track is fly-able		

DME/DME	Return To Summary
Settings:	<p> RNP: 2.0 Flight Mode: Manual Line of Sight (DTED Level 0 Max): Evaluated DME Restrictions: Evaluated Inertial Drift: Enabled Initial Drift: 0.558 NM INS Drift Rate: 8.000 NM/Hour Range Mode: OSV Co-Frequencies: Evaluated RNP Edges: Evaluated Min DME Range: 3.0 NM Allowed Gap Length: 4.0 NM DME Types: VOR/DME, VORTAC, Standalone, and User DME Include Angles: 30 to 150 Critical DMEs: Not allowed DoD Facilities: Not included Foreign Facilities: Not included Low DMEs: Not included Terminal DMEs: Not included Flight Check DMEs: Selected Higher Altitudes: Evaluated Near Maximum Altitude: Evaluated Automatic ESVs: Enabled (Reduce Criticals) </p>
<p>Total Number of DMEs Used: 8</p> <p>Maximum DME Error: 0.711 NM.</p> <p>No Critical DMEs were found.</p> <p>Available DMEs: SPA, RDU, GSO, HVQ, PSK, HNN, BKW, AIR</p> <p>Foreign DMEs within range: YQG</p>	

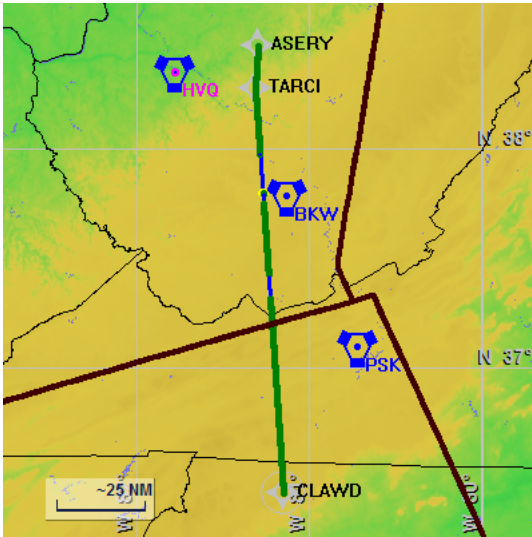


DME/DME (Continued)						Return To Summary			
DMEs Used									
#	Name	Lat/Lon/MAGVAR	Range	Source	Critical	Err. [NM]	Status	Time	Distance
1	SPA	N 35° 2' 1.05" W 81° 55' 37.24" 02 W	H + ESV	User	NO	0.711	Enabled	35.6%	35.6%
2	GSO	N 36° 2' 44.49" W 79° 58' 34.95" 03 W	H	Database	NO	0.711	Enabled	6.0%	6.0%
3	RDU	N 35° 52' 21.08" W 78° 47' 0.03" 04 W	H + ESV	User	NO	0.711	Enabled	29.5%	29.5%
4	PSK	N 37° 5' 15.74" W 80° 42' 46.44" 06 W	H	Database	NO	1.183	Enabled	22.2%	22.2%
5	HVQ	N 38° 20' 58.84" W 81° 46' 11.68" 03 W	H + ESV	User	NO	0.734	Enabled	32.5%	32.5%
6	BKW	N 37° 46' 49.08" W 81° 7' 24.44" 06 W	H	Database	NO	1.674	Enabled	22.3%	22.3%
7	HNN	N 38° 45' 14.85" W 82° 1' 34.20" 03 W	H	Database	NO	0.711	Enabled	2.2%	2.2%
8	AIR	N 40° 0' 59.78" W 80° 49' 1.94" 07 W	H + ESV	User	NO	1.058	Enabled	18.2%	18.2%
	Total Coverage							84.2%	84.2%
Flight Check DME Selection									
Distance [NM]		Selected DMEs (Required)						Alternate	
0.0		RDU	SPA	GSO	HVQ				
43.8		RDU	SPA	PSK	HVQ	HNN		GSO	
54.7		BKW	AIR	PSK	HVQ	HNN			
111.1		BKW	AIR	HVQ	HNN				
Inertial Drift Segments									
#	Start Location			End Location			Length [NM]		
1	N 37° 19' 7.02" W 81° 13' 29.01"			N 37° 25' 32.22" W 81° 14' 2.68"			6.4		
VOR: BKW				Available from N 37° 19' 7.02" W 81° 13' 29.01" to N 37° 25' 32.22" W 81° 14' 2.68"					
VOR: BLF				Available from N 37° 19' 7.02" W 81° 13' 29.01" to N 37° 25' 32.22" W 81° 14' 2.68"					
VOR: PSK				Available from N 37° 19' 7.02" W 81° 13' 29.01" to N 37° 25' 32.22" W 81° 14' 2.68"					
VOR: RNL				Available from N 37° 24' 1.33" W 81° 13' 54.73" to N 37° 25' 32.22" W 81° 14' 2.68"					

DME/DME (Continued)			Return To Summary
<i>Inertial Drift Segments (Continued)</i>			
#	Start Location	End Location	Length [NM]
2	N 37° 45' 5.07" W 81° 15' 45.82"	N 37° 47' 36.54" W 81° 15' 59.21"	2.5
	VOR: RNL	Available from N 37° 45' 5.07" W 81° 15' 45.82" to N 37° 47' 36.54" W 81° 15' 59.21"	
	VOR: BKW	Available from N 37° 45' 5.07" W 81° 15' 45.82" to N 37° 47' 36.54" W 81° 15' 59.21"	
	VOR: BLF	Available from N 37° 45' 5.07" W 81° 15' 45.82" to N 37° 47' 36.54" W 81° 15' 59.21"	
	VOR: CRW	Available from N 37° 45' 35.37" W 81° 15' 48.50" to N 37° 47' 36.54" W 81° 15' 59.21"	
3	N 37° 48' 24.15" W 81° 16' 3.42"	N 37° 58' 47.21" W 81° 16' 58.67"	10.4
	VOR: RNL	Available from N 37° 48' 24.15" W 81° 16' 3.42" to N 37° 58' 47.21" W 81° 16' 58.67"	
	VOR: BKW	Available from N 37° 48' 24.15" W 81° 16' 3.42" to N 37° 58' 47.21" W 81° 16' 58.67"	
	VOR: BLF	Available from N 37° 48' 24.15" W 81° 16' 3.42" to N 37° 58' 12.59" W 81° 16' 55.59"	
	VOR: CRW	Available from N 37° 48' 24.15" W 81° 16' 3.42" to N 37° 58' 47.21" W 81° 16' 58.67"	
	VOR: HVQ	Available from N 37° 48' 50.11" W 81° 16' 5.72" to N 37° 58' 47.21" W 81° 16' 58.67"	

Available DMEs by Waypoints		Return To Summary
Waypoint Before	Waypoint After	DME List
CLAWD	TARCI	AIR, HVQ, RDU, SPA, BKW, GSO, HNN, and PSK
TARCI	ASERY	AIR, HVQ, BKW, and HNN

User Data					Return To Summary		
User Data Files							
#	File Name						
1	Q39.udt						
User DMEs							
#	Name	Lat/Lon/MAGVAR	Range	Elevation [ft]	Frequency	Replaces	Status
1	SPA	N 35° 2' 1.05" W 81° 55' 37.24" 02 W	H	935.4	115.70	SPA	Used
Restriction:		Bearing [True]: 349.0° to 97.0° Bearing [Mag]: 351.0° to 99.0°			Distance: Beyond 0.0 NM Altitude: Below 15000.0 ft		
ESV:		Bearing [True]: 10.0° to 29.0° Bearing [Mag]: 12.0° to 31.0°			Arc Distance: Out to 133.0 NM Altitude: 18000.0 to 45000.0 ft		
2	RDU	N 35° 52' 21.08" W 78° 47' 0.03" 04 W	H	429.2	117.20	RDU	Used
ESV:		Bearing [True]: 284.0° to 306.0° Bearing [Mag]: 288.0° to 310.0°			Arc Distance: Out to 144.0 NM Altitude: 18000.0 to 45000.0 ft		
3	HVQ	N 38° 20' 58.84" W 81° 46' 11.68" 03 W	H	1099.0	117.40	HVQ	Used
ESV:		Bearing [True]: 98.0° to 170.0° Bearing [Mag]: 101.0° to 173.0°			Arc Distance: Out to 120.0 NM Altitude: 18000.0 to 20000.0 ft		
4	AIR	N 40° 0' 59.78" W 80° 49' 1.94" 07 W	H	1284.5	117.10	AIR	Used
ESV:		Bearing [True]: 184.0° to 196.0° Bearing [Mag]: 191.0° to 203.0°			Arc Distance: Out to 125.0 NM Altitude: 18000.0 to 45000.0 ft		



Name: MARK SCHOENHOFF
Project Name: Q39
Output File: Q39 SOUTH ASERY
 CLAWD 20170427_0836
Procedure Name: SOUTH
Software: RNAV-Pro™
Version: 2.39g
Date/Time: 4/27/2017 8:37:23 AM
Input File: WV_NC NC_WV_SOUTH
 Q-ROUTE ASERY CLAWD
 20160120_1323.txt
Databases: AIRNAV Date: 4/16/2017
 CIFP Date: 8/18/2016
 DTED® (MAX) Date: 2002

Results Summary:

Flyability



DME/DME



No Critical DMEs Exist

Radars

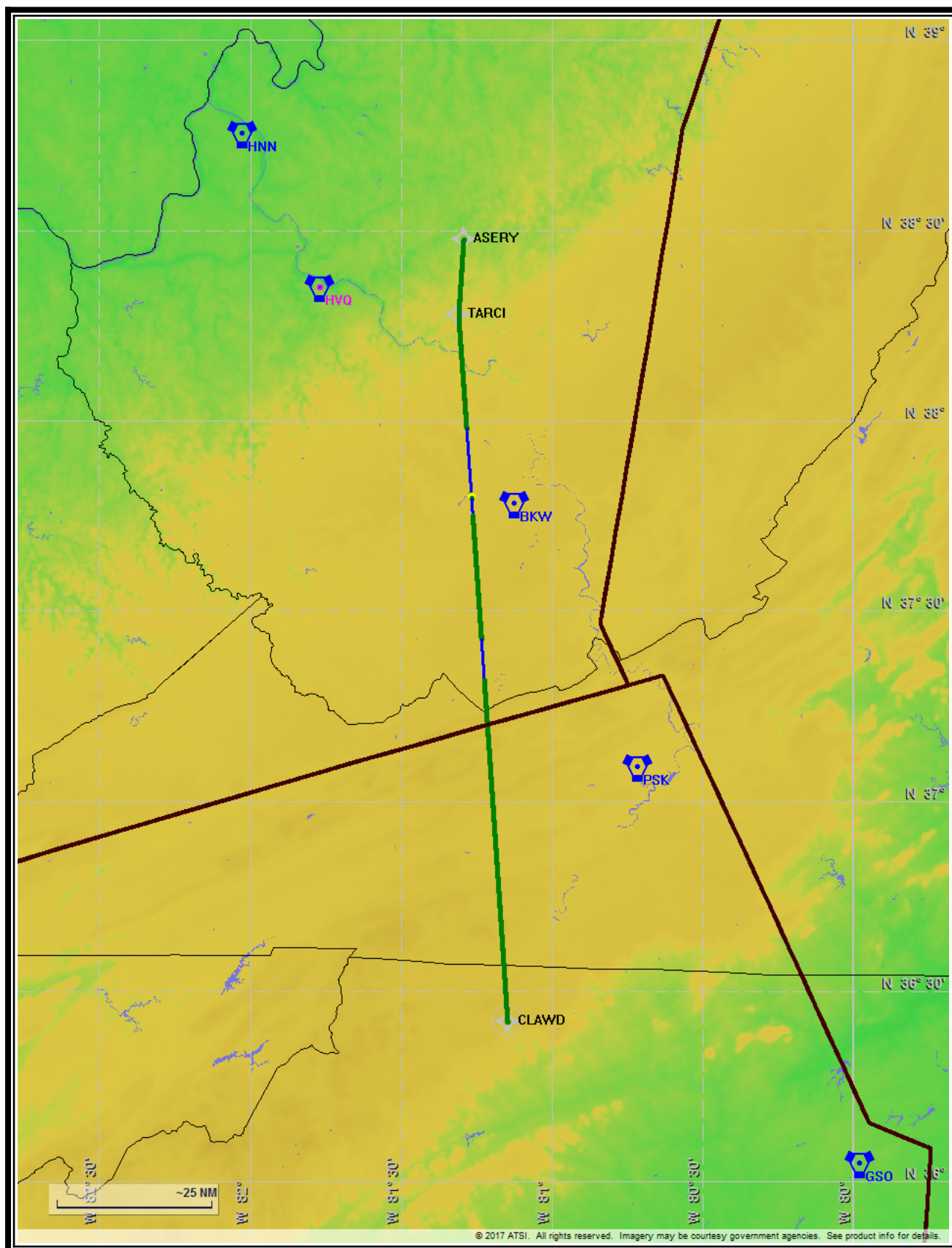


Comms



TERPS

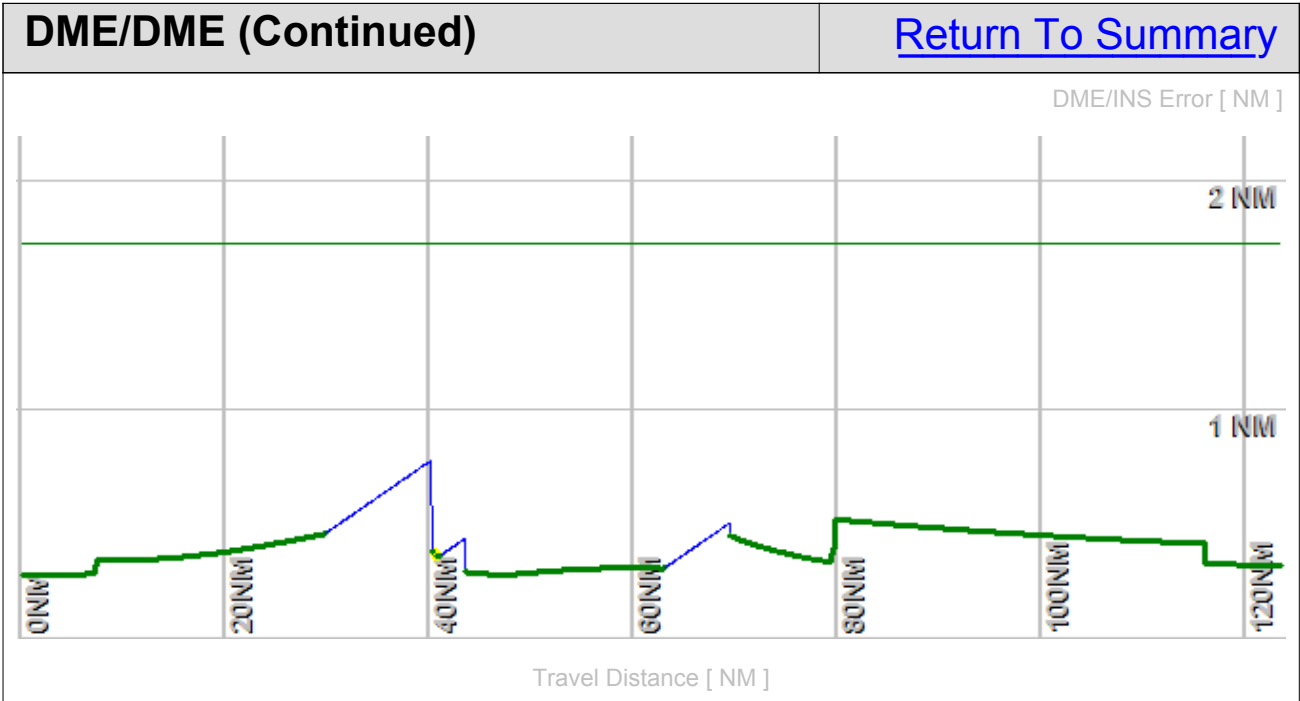




Flight Plan					Return To Summary		
Name	Type	Lat/Lon	Alt [ft]	VNAV Mode	IAS [Kts]	Turn Type	Leg Type
ASERY	WP	N 38° 28' 35.97" W 81° 17' 34.14"	18000.0	Step	250.0	Fly By	TF
TARCI	WP	N 38° 16' 36.08" W 81° 18' 34.08"	18000.0	Step	250.0	Fly By	TF
CLAWD	WP	N 36° 25' 8.98" W 81° 8' 49.75"	18000.0	Step	250.0	Fly Over	TF

Flyability		Return To Summary
Settings:	Flight Type: EnRoute Aircraft Category: Cat D Climb Gradient: <i>None assigned</i> Ground Speeds: Table: 200.0 Kts up to 11000.0 ft 240.0 Kts up to 18000.0 ft 260.0 Kts up to 24000.0 ft 340.0 Kts up to 99900.0 ft Wind Settings: <i>None assigned</i> Descent During a Turn: Allowed VNAV Mode: Flight Plan	
Entire track is fly-able		

DME/DME	Return To Summary
Settings:	<p> RNP: 2.0 Flight Mode: Manual Line of Sight (DTED Level 0 Max): Evaluated DME Restrictions: Evaluated Inertial Drift: Enabled Initial Drift: 0.558 NM INS Drift Rate: 8.000 NM/Hour Range Mode: OSV Co-Frequencies: Evaluated RNP Edges: Evaluated Min DME Range: 3.0 NM Allowed Gap Length: 4.0 NM DME Types: VOR/DME, VORTAC, Standalone, and User DME Include Angles: 30 to 150 Critical DMEs: Not allowed DoD Facilities: Not included Foreign Facilities: Not included Low DMEs: Not included Terminal DMEs: Not included Flight Check DMEs: Selected Higher Altitudes: Evaluated Near Maximum Altitude: Evaluated Automatic ESVs: Enabled (Reduce Criticals) </p>
<p>Total Number of DMEs Used: 8</p> <p>Maximum DME Error: 0.781 NM.</p> <p>No Critical DMEs were found.</p> <p>Available DMEs: HVQ, AIR, BKW, HNN, PSK, GSO, RDU, SPA</p> <p>Foreign DMEs within range: YQG</p>	



DME/DME (Continued)						Return To Summary			
DMEs Used									
#	Name	Lat/Lon/MAGVAR	Range	Source	Critical	Err. [NM]	Status	Time	Distance
1	HVQ	N 38° 20' 58.84" W 81° 46' 11.68" 03 W	H + ESV	User	NO	0.844	Enabled	32.4%	32.4%
2	BKW	N 37° 46' 49.08" W 81° 7' 24.44" 06 W	H	Database	NO	1.683	Enabled	22.3%	22.3%
3	AIR	N 40° 0' 59.78" W 80° 49' 1.94" 07 W	H + ESV	User	NO	1.071	Enabled	18.2%	18.2%
4	PSK	N 37° 5' 15.74" W 80° 42' 46.44" 06 W	H	Database	NO	1.002	Enabled	22.2%	22.2%
5	HNN	N 38° 45' 14.85" W 82° 1' 34.20" 03 W	H	Database	NO	0.781	Enabled	2.2%	2.2%
6	SPA	N 35° 2' 1.05" W 81° 55' 37.24" 02 W	H + ESV	User	NO	0.781	Enabled	35.7%	35.7%
7	RDU	N 35° 52' 21.08" W 78° 47' 0.03" 04 W	H + ESV	User	NO	0.781	Enabled	29.4%	29.4%
8	GSO	N 36° 2' 44.49" W 79° 58' 34.95" 03 W	H	Database	NO	0.781	Enabled	6.0%	6.0%
	Total Coverage							84.2%	84.2%
Flight Check DME Selection									
Distance [NM]		Selected DMEs (Required)						Alternate	
0.0		BKW	HNN	AIR	HVQ				
11.6		BKW	HNN	AIR	HVQ	PSK			
69.0		GSO	HNN	SPA	HVQ	PSK	RDU		
79.9		GSO	RDU	SPA	HVQ				
Inertial Drift Segments									
#	Start Location			End Location				Length [NM]	

Available DMEs by Waypoints		Return To Summary
Waypoint Before	Waypoint After	DME List
ASERY	TARCI	AIR, HVQ, BKW, and HNN
TARCI	CLAWD	AIR, HVQ, RDU, SPA, BKW, GSO, HNN, and PSK

User Data					Return To Summary		
User Data Files							
#	File Name						
1	Q39.udt						
User DMEs							
#	Name	Lat/Lon/MAGVAR	Range	Elevation [ft]	Frequency	Replaces	Status
1	SPA	N 35° 2' 1.05" W 81° 55' 37.24" 02 W	H	935.4	115.70	SPA	Used
Restriction:		Bearing [True]: 349.0° to 97.0° Bearing [Mag]: 351.0° to 99.0°			Distance: Beyond 0.0 NM Altitude: Below 15000.0 ft		
ESV:		Bearing [True]: 10.0° to 29.0° Bearing [Mag]: 12.0° to 31.0°			Arc Distance: Out to 133.0 NM Altitude: 18000.0 to 45000.0 ft		
2	RDU	N 35° 52' 21.08" W 78° 47' 0.03" 04 W	H	429.2	117.20	RDU	Used
ESV:		Bearing [True]: 284.0° to 306.0° Bearing [Mag]: 288.0° to 310.0°			Arc Distance: Out to 144.0 NM Altitude: 18000.0 to 45000.0 ft		
3	HVQ	N 38° 20' 58.84" W 81° 46' 11.68" 03 W	H	1099.0	117.40	HVQ	Used
ESV:		Bearing [True]: 98.0° to 170.0° Bearing [Mag]: 101.0° to 173.0°			Arc Distance: Out to 120.0 NM Altitude: 18000.0 to 20000.0 ft		
4	AIR	N 40° 0' 59.78" W 80° 49' 1.94" 07 W	H	1284.5	117.10	AIR	Used
ESV:		Bearing [True]: 184.0° to 196.0° Bearing [Mag]: 191.0° to 203.0°			Arc Distance: Out to 125.0 NM Altitude: 18000.0 to 45000.0 ft		