

Flight Procedure Tracking Form		Action: FLIGHT CHECK	Task Type: IAP	Date Open: 09/29/2014	Task #: 2014090832717201005	Request #: 20140908327172
Procedure: ILS OR LOC RWY 16L AMDT 1A			Airport ID: KEUG	Airport: MAHLON SWEET FIELD		Reimbursable #: NO
City: EUGENE	ST: OR	GPS #:	Estimated Chart Date: 11/10/2016		FICO #:	
Fac ID: ADE		Fac. Type: ILS		Specialist: RONALD SALPINO		
Procedure Review						
	Rec'd	Rel'd	Full Name	Comments		
Lead:	11/16/2015	05/13/2016	BEV L BORDY			
QA:	05/13/2016	8/9, 8/15	CLARK			
Liaison:						
Procedure Comments: ENROUTE-NON Remark Type: INFORMATION CONTACT: BEVERLY BORDY, 405-954-8293						

QUALITY
15
CHECKED

QUALITY
18
CHECKED

AL-140 (FAA)

FIG

ILS or LOC RWY 16L
MAHLON SWEET FIELD (EUG)

MALSR

MISSED APPROACH: Climb to 5200 on heading 163° and EUG VORTAC R-152 to SAGIN/EUG 16 DME and hold, continue climb-in-hold to 5200.

[illegible]

ELEV 374

TDZE 369

163° 4.9 NM from FAF

34L (V)

34R (P)

396 (A)

425 (S)

410 (A)

494 (TWR)

6000 X 150

TDZ/CL Rwy 16R

REIL Rwy 34R

HIRL Rws 16L-34R and 16R-34L

MAHLON SWEET FIELD (EUG)

44°07'N-123°13'W

ILS or LOC RWY 16L

LOC/DME I-ADE 111.75 Chan 54 (Y)	APP CRS 163°	Rwy Idg 6000 TDZE 369 Apt Elev 374
-----------------------------------------------	------------------------	---------------------------------------------------------------

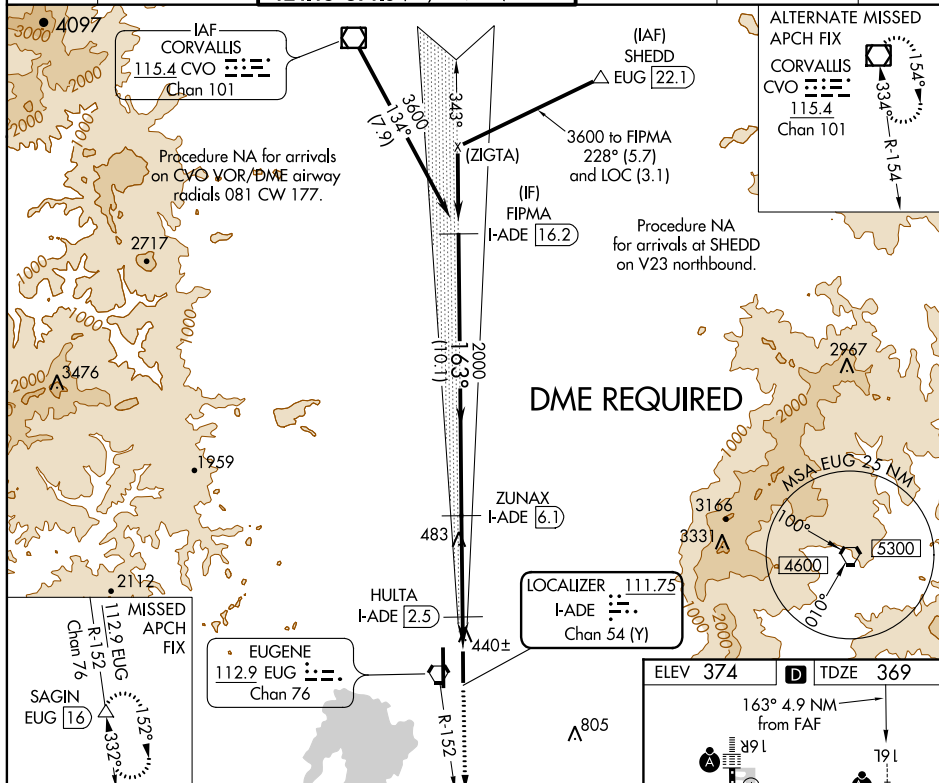
ILS or LOC/DME RWY 16L MAHLON SWEET FIELD (EUG)

▼ For inoperative MALSR, increase S-LOC 16L Cat D visibility to 1 mile.
▲ DME required.

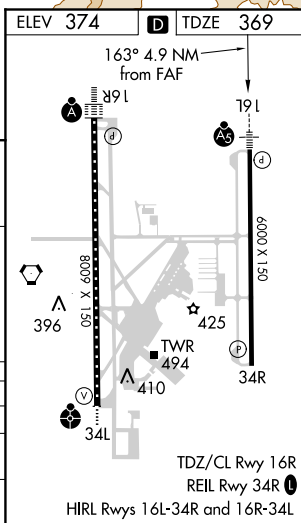


MISSED APPROACH: Climb to 5200 on heading 163° and EUG VORTAC R-152 to SAGIN/EUG 16 DME and hold, continue climb-in-hold to 5200.

ATIS 125.225	CASCADE APP CON 119.6 348.7	EUGENE TOWER ★ 118.9 (CTAF) 371.9 (Rwy 16R/34L) 124.15 371.9 (Rwy 16L/34R)	GND CON 121.7 269.5	CLNC DEL 121.7 269.5	UNICOM 122.95
------------------------	---------------------------------------	-------------------------------------------------------------------------------------------------------	-------------------------------	--------------------------------	-------------------------



CATEGORY	VGSI and ILS glidepath not coincident (VGSI Angle 3.00/TCH 52).			
	*LOC only			
	*820			
	*163°			
S-ILS 16L	569-1/2 200 (200-1/2)			
S-LOC 16L	700-1/2 331 (400-1/2) 700-3/4 331 (400-3/4)			
CIRCLING	800-1 426 (500-1)	840-1 466 (500-1)	840-1 1/2 466 (500-1 1/2)	940-2 566 (600-2)



Airport ID: KEUG	NO	SEG	OBS	ELEV
Apt Name: MAHLON SWEET FIELD	13	CIRC CAT A	TWR (41-021783)	494
City: EUGENE	14	CIRC CAT B	TWR (41-001057)	514
State: OR	15	CIRC CAT C	TANK (41-021038)	519
Proc ID: ILS OR LOC 16L	16	CIRC CAT D	AAO	799
Amdt: A1A				
Date: 11 MAY 2016				
Scale: 1:100000				

