

Flight Procedure Tracking Form		Action: AMENDMENT	Task Type: IAP	Date Open: 09/29/2014	Task #: 2014090832717201003	Request #: 20140908327172
Procedure: VOR OR TACAN RWY 16R AMDT 5B			Airport ID: KEUG	Airport: MAHLON SWEET FIELD		Reimbursable #: NO
City: EUGENE	ST: OR	GPS #:	Estimated Chart Date: 11/10/2016		FICO #:	
Fac ID: N/A		Fac. Type:		Specialist: RONALD SALPINO		
Procedure Review						
	Rec'd	Rel'd	Full Name	Comments		
Lead:	11/16/2015	07/13/2016	BEV L BORDY	QUALITY		
QA:	07/13/2016	08/15/2016	Boyd L Stuckey	11		
Liaison:				CHECKED		
Procedure Comments:			ENROUTE-NON	Remark Type: INFORMATION		
CONTACT: BEVERLY BORDY, 405-954-8293				UNABLE TO CODE NO NAMED MAP 8/23/16		

QUALITY
15
CHECKED

VORTAC EUG	APP CRS	Rwy Idg	8009
112.9	168°	TDZE	363
Chan 76		Apt Elev	374

VOR or TACAN RWY 16R

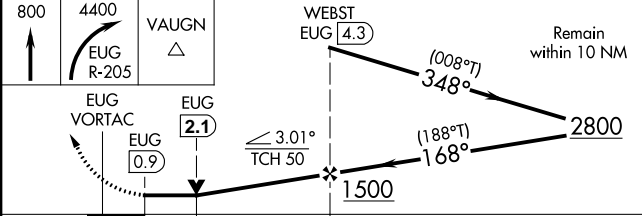
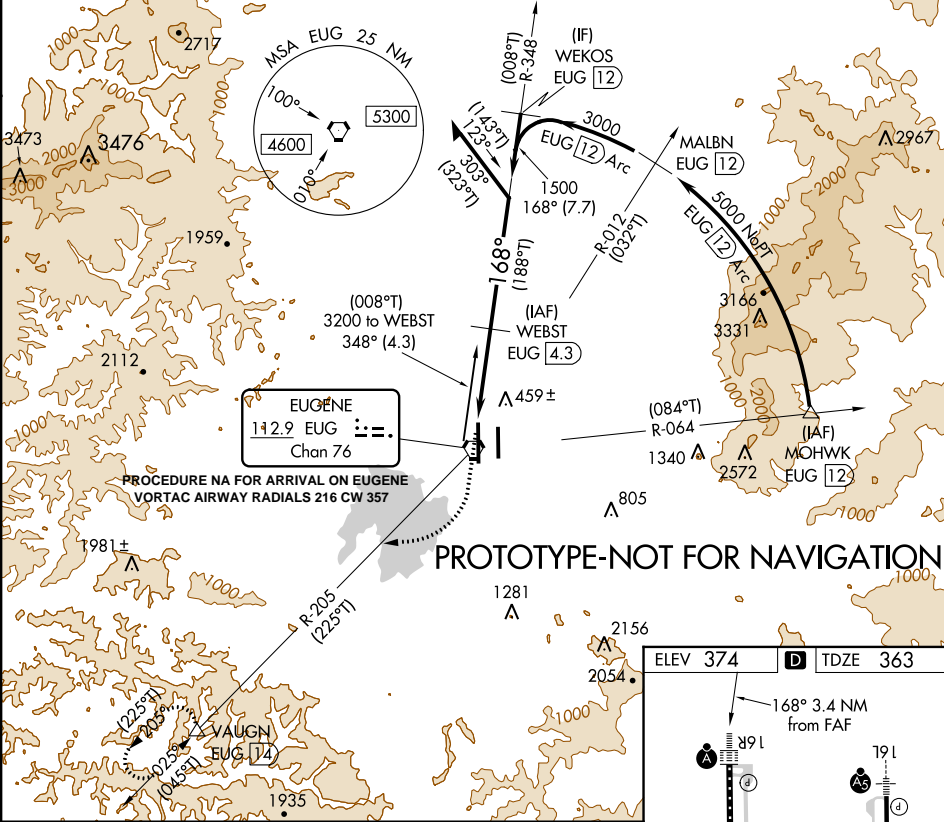
MAHLON SWEET FIELD (EUG)

FOR INOPERATIVE ALS, INCREASE S-16R CAT C, D VISIBILITY TO RVR 6000.

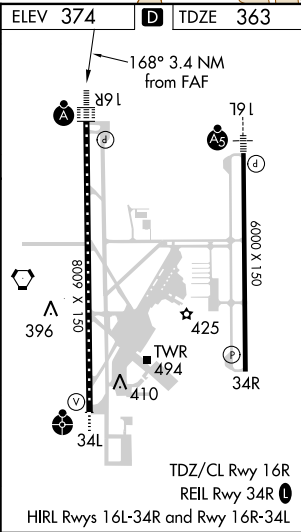
ALS F-2

MISSED APPROACH: Climb to 800 then climbing right turn to 4400 on EUG VORTAC R-205 to VAUGHN/EUG 14 DME and hold. Continue climb in hold to 4400.

ATIS	CASCADE APP CON	EUGENE TOWER ★	GND CON	CLNC DEL	UNICOM
125.225	119.6 348.7	118.9 (CTAF) 371.9 (Rwy 16R/34L)	121.7 269.5	121.7 269.5	122.95
		124.15 371.9 (Rwy 16L/34R)			



CATEGORY	A	B	C	D
S-16R	780/24	417 (500-½)	780/50	417 (500-¾)
CIRCLING	800-1 426 (500-1)	840-1 466 (500-1)	840-1½ 466 (500-½)	1100-2¼ 726 (800-2¼)



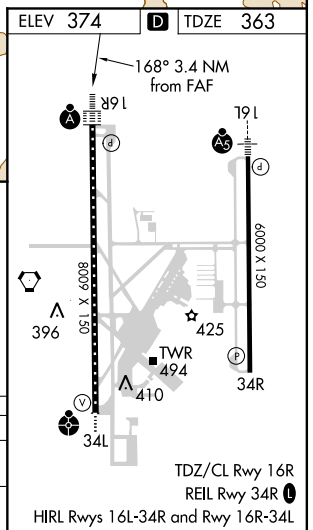
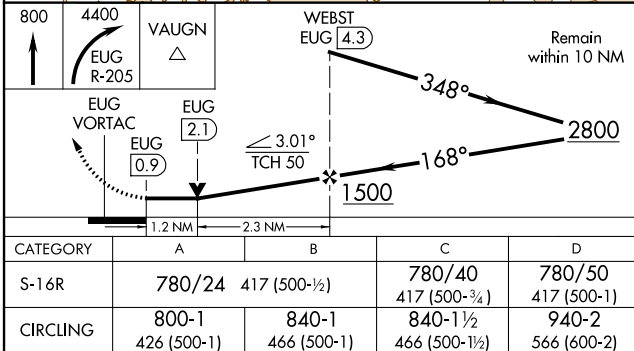
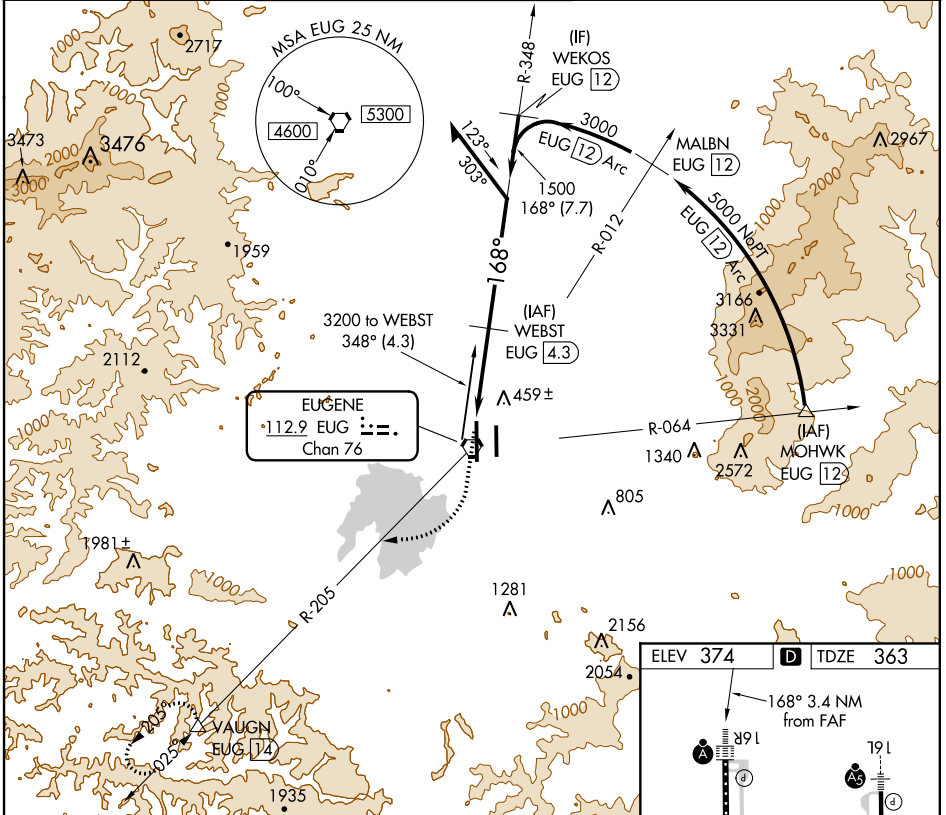
VORTAC EUG 112.9 Chan 76	APP CRS 168°	Rwy Idg TDZE 363 Apt Elev 374	8009
----------------------------------------------	------------------------	---------------------------------------------------	-------------

VOR/DME or TACAN RWY 16R

MAHLON SWEET FIELD (EUG)

V	For inoperative ALSF-2, increase S-16R Cat D visibility to RVR 6000.	ALSF-2 	MISSED APPROACH: Climb to 800 then climbing right turn to 4400 on EUG VORTAC R-205 to VAUGN/EUG 14 DME and hold. Continue climb in hold to 4400.

ATIS 125.225	CASCADE APP CON 119.6 348.7	EUGENE TOWER ★ 118.9 (CTAF) 0 371.9 (Rwy 16R/34L) 124.15 371.9 (Rwy 16L/34R)	GND CON 121.7 269.5	CLNC DEL 121.7 269.5	UNICOM 122.95
------------------------	---------------------------------------	---------------------------------------------------------------------------------------------------------	-------------------------------	--------------------------------	-------------------------



Airport ID: KEUG	NO	SEG	OBS	ELEV
Apt Name: MAHLON SWEET FIELD	14	CIRC CAT A	TWR (41-021783)	494
City: EUGENE	15	CIRC CAT B	TWR (41-001057)	514
State: OR	16	CIRC CAT C	TANK (41-021038)	519
Proc ID: VOR OR TACAN 16R	17	CIRC CAT D	AAO	799
Amdt: A5A				
Date: 11 MAY 2016				
Scale: 1:100000				

