

Flight Procedure Tracking Form		Action: FLIGHT CHECK	Task Type: IAP	Date Open: 09/08/2014	Task #: 2014090832401401001	Request #: 20140908324014
Procedure: RNAV (GPS) RWY 26 AMDT 1			Airport ID: PHTO	Airport: HILO INTL	Reimbursable #: NO	
City: HILO	ST: HI	GPS #:	Estimated Chart Date: 01/03/2019		FICO #:	
Fac ID: N/A		Fac. Type:			Specialist: HOWARD HAWKINS	
Procedure Review						
	Rec'd	Rel'd	Full Name		Comments	
Lead:	12/19/2016				QUALITY	
QA:					10	
Liaison:					CHECKED	
Procedure Comments:			ENROUTE-NON			
			Remark Type: INFORMATION			
FULL AMENDMENT.						
ACTIVE DATA USED						
CONTACT DAVE TEFFETELLER 202-267-5177.						
ARI SAVED 11/28/18						

HILO, HAWAII

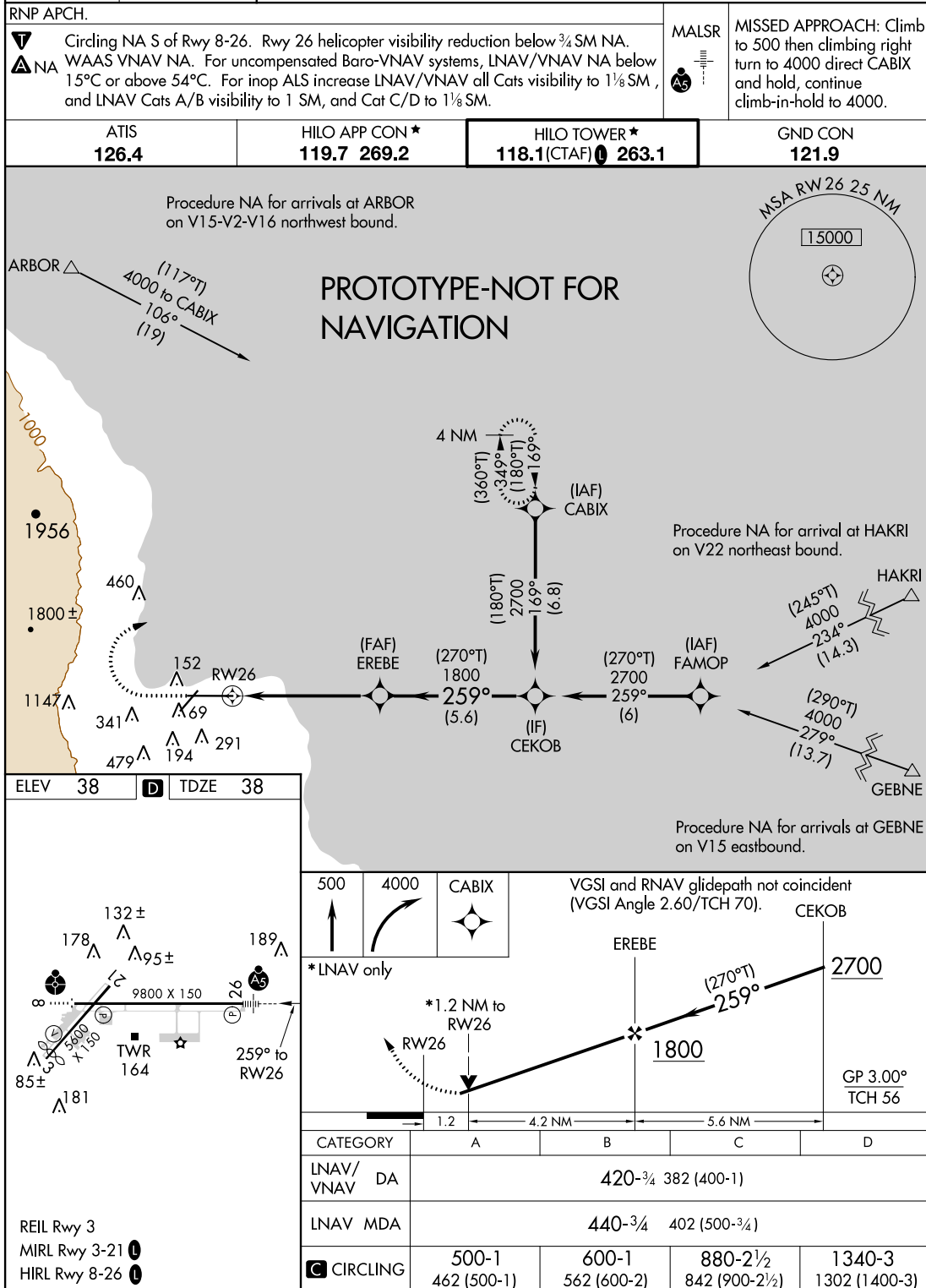
AL-756 (FAA)

FIG

APP CRS	Rwy ldg	9800
259°	TDZE	38
	Apt Elev	38

RNAV (GPS) RWY 26

HILO INTL (ITO) (PHTO)

HILO, HAWAII
Amdt 1 FIG

19°43'N-155°03'W

HILO INTL (ITO) (PHTO)
RNAV (GPS) RWY 26

AUTOMATED AL-756 RNAV (GPS) RWY 26
 AUTOMATED AL-756 RNAV (GPS) RWY 26

PAC
 11-30-18
 COMPILER: HD
 REVIEWER:
 DBL CHK:
 EFF: FIG

155°0'0"W

19°45'0"N

LNAV/VNAV

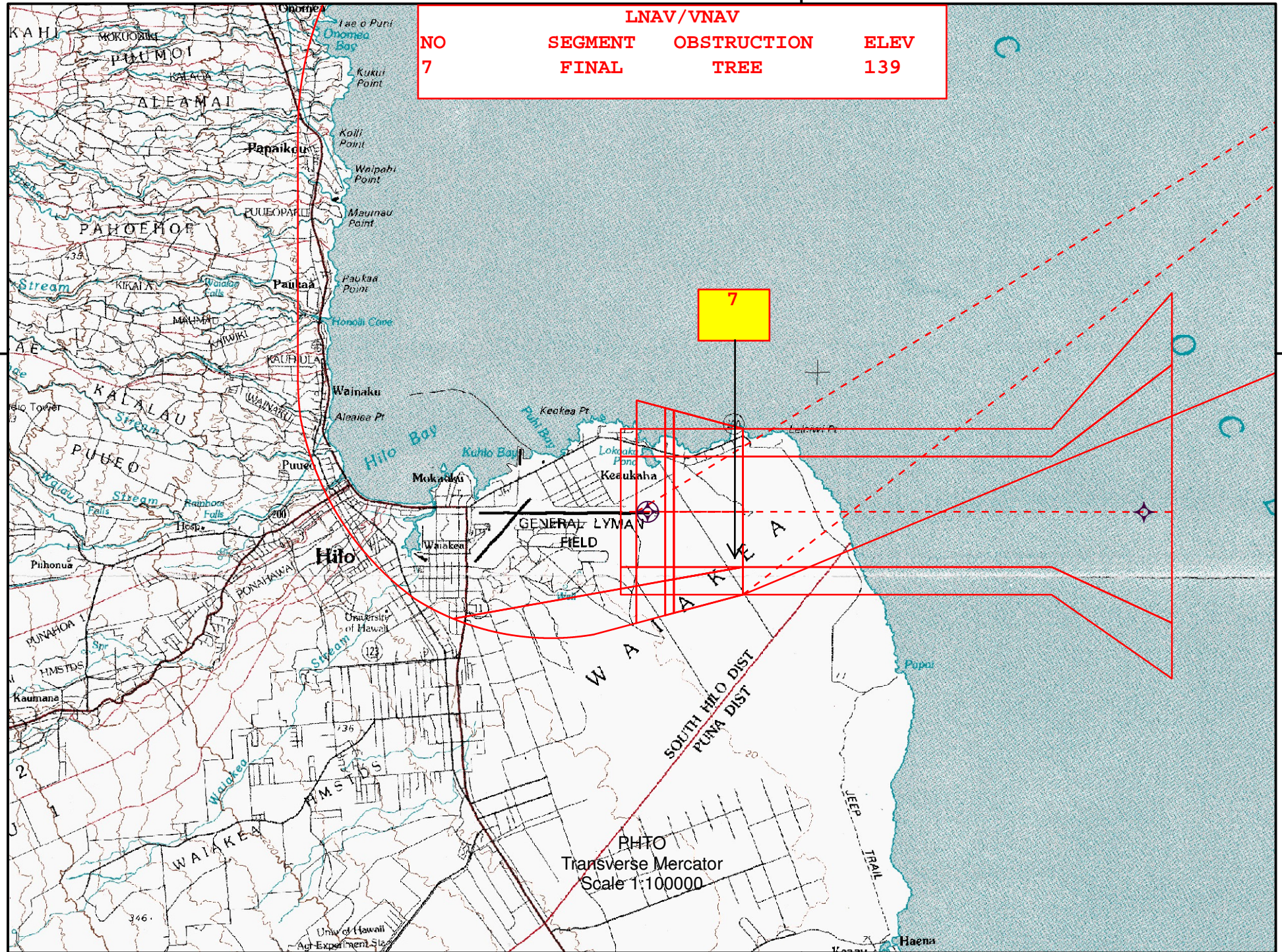
NO
7

SEGMENT
FINAL

OBSTRUCTION
TREE

ELEV
139

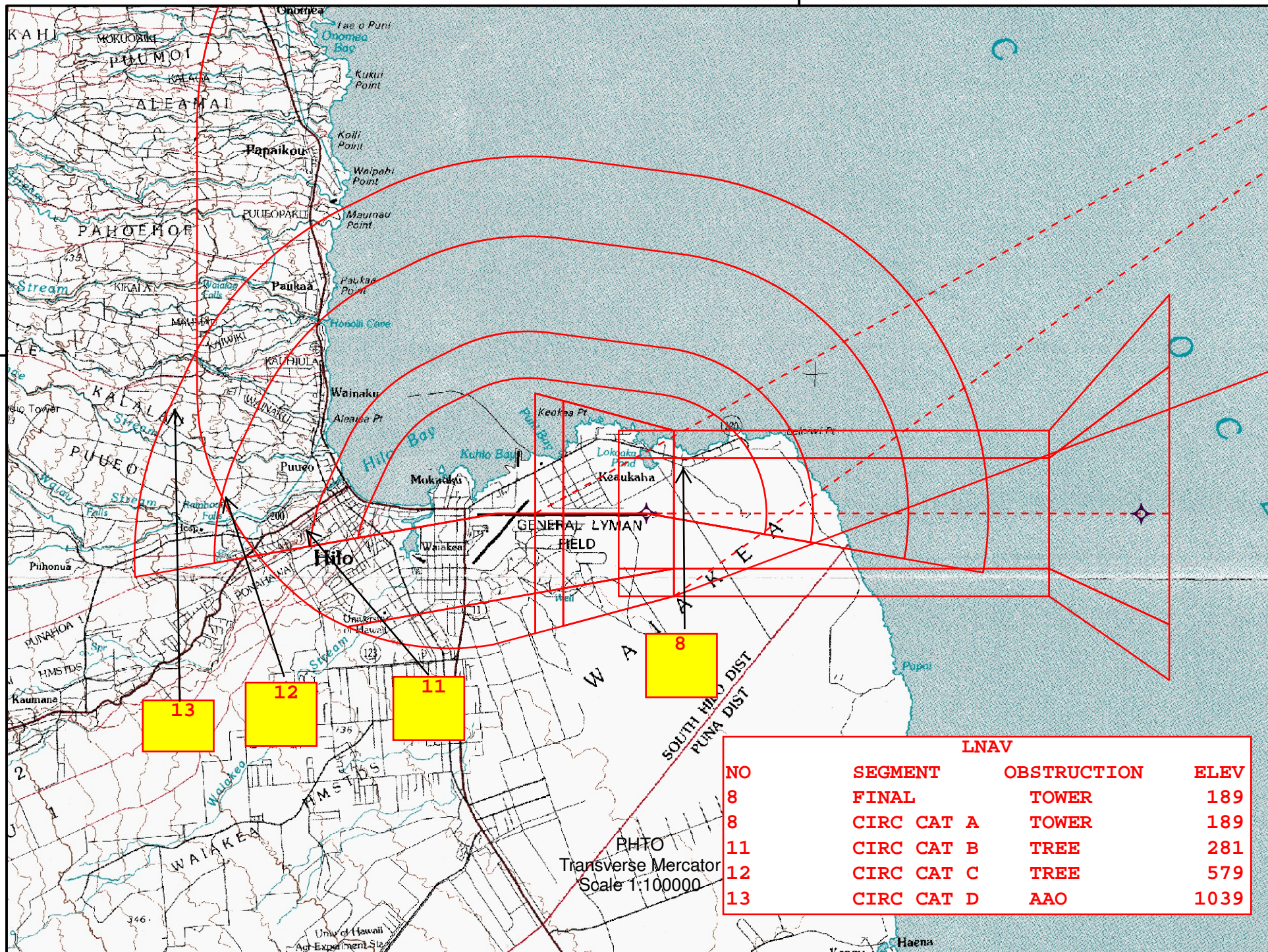
7



RHTO
Transverse Mercator
Scale 1:100000

155°0'0"W

19°45'0"N

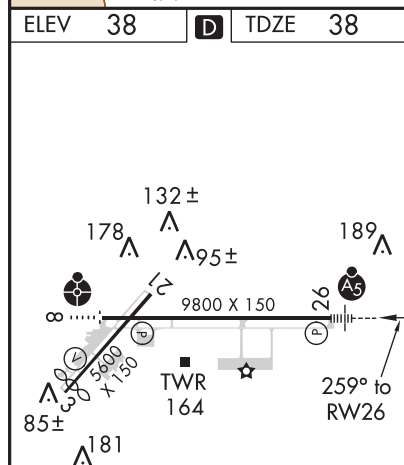
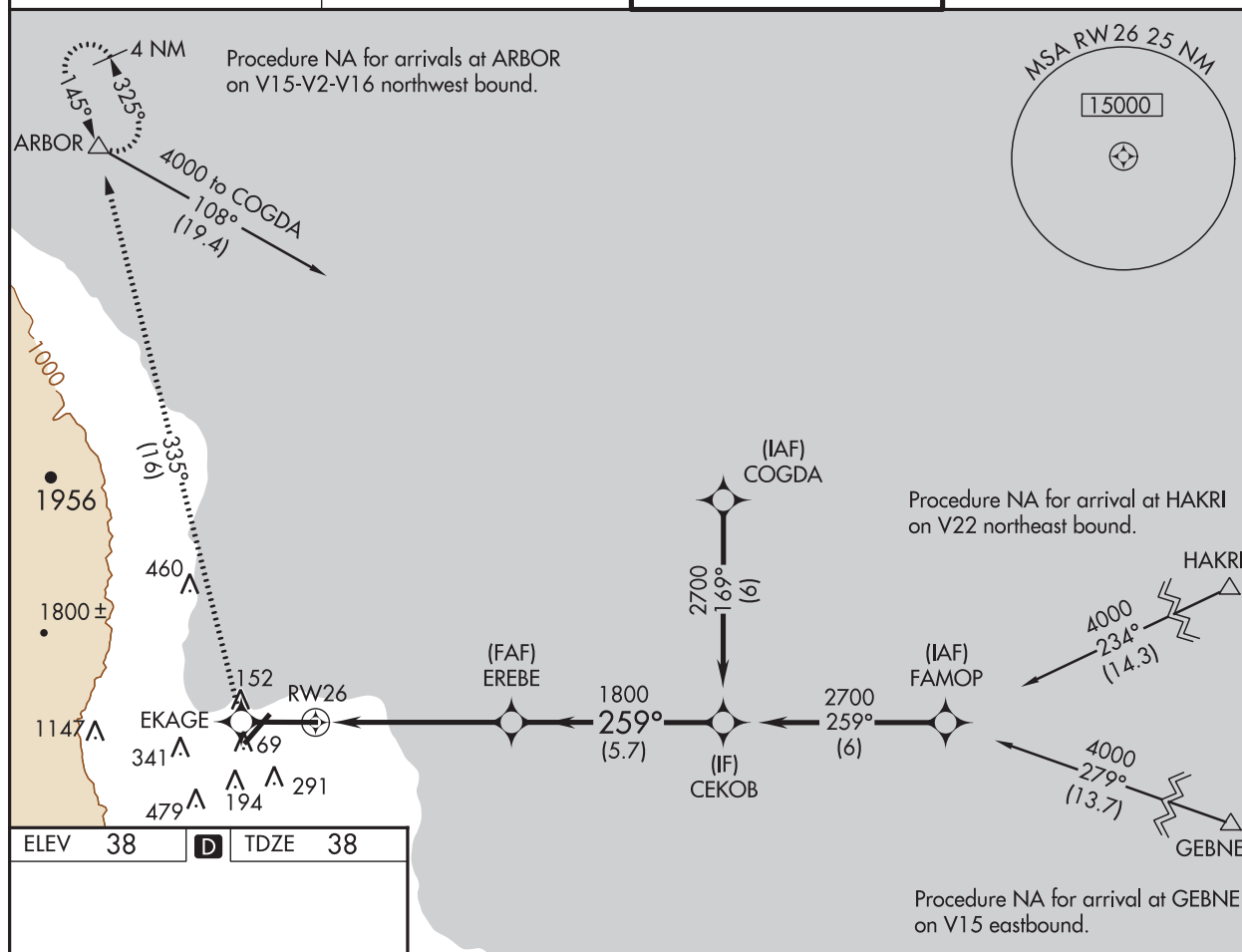


17117

RNAV (GPS) RWY 26
HILO INTL (ITO) (PHTO)

MISSED APPROACH: Climb to 5000
direct EKAGE then on track 335° to
ARBOR and hold.

GND CON
121.9



5000 ↑	EKAGE ✱	tr 335°	ARBOR △	VGSI and RNAV glidepath not coincident (VGSI Angle 2.60/TCH 70).	CEKOB
*LNAV only				EREBE 1800	2700
*1.2 NM to RW26 RW26 1.2 4.1 NM 5.7 NM				1800	GP 3.00° TCH 53
CATEGORY	A	B	C	D	
LNAV/ VNAV	DA	440-1 402 (500-1)			
LNAV MDA	440-3/4	402 (500-3/4)	440-1 402 (500-1)		
CIRCLING	500-1 1/2	462 (500-1 1/2)	700-2 662 (700-2)		

HILO INTL (ITO) (PHTO)
RNAV (GPS) RWY 26

PAC, 19 JUL 2018 to 13 SEP 2018