

Flight Procedure Tracking Form		Action: FLIGHT CHECK	Task Type: IAP	Date Open: 09/08/2014	Task #: 2014090830563401001	Request #: 20140908305634
Procedure: ILS OR LOC RWY 27 AMDT 35			Airport ID: KCYS	Airport: CHEYENNE RGNL/JERRY OLSON FIELD		Reimbursable #: NO
City: CHEYENNE	ST: WY	GPS #:	Estimated Chart Date: 05/26/2016			FICO #:
Fac ID: N/A		Fac. Type:			Specialist:	
Procedure Review						
	Rec'd	Rel'd	Full Name	Comments		
Lead:	12/04/2015					
QA:			pjo 03/23/2016			
Liaison:						
Procedure Comments:			Remark Type: INFORMATION			
CY LOM WILL BE DECOMMISSION; ADDED DME TO THE LOCALIZER AND DELETED 13 AND 15 DME ARCS. CONTACT: LONNIE EVERHART/JOHNNIE BAKER, AJV-543 LEADS, 405.954.4576/5148.						

QUALITY
6
CHECKED

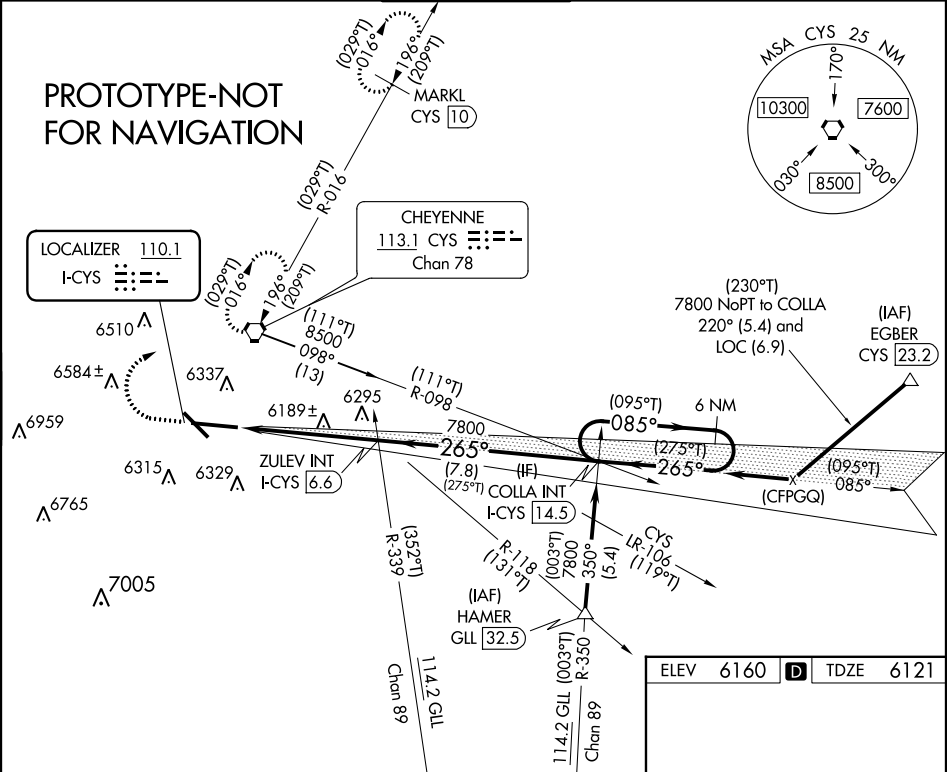
QUALITY
15
CHECKED

LOC I-CYS 110.1	APP CRS 265°	Rwy ldg TDZE Apt Rlev	7985 6121 6160
---------------------------	------------------------	-----------------------------	---

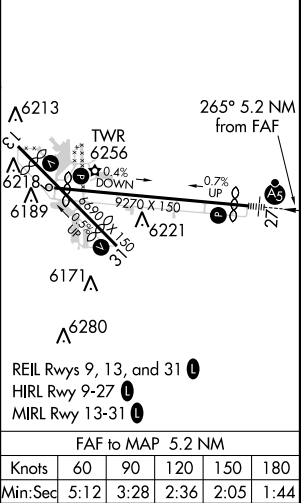
ILS or LOC RWY 27
CHEYENNE RGNL/JERRY OLSON FIELD (CYS)

 # RVR 1800 authorized with the use of FD or AP or HUD to DA.	MALSR 	MISSED APPROACH: Climb to 6800, then climbing right turn to 8000 direct CYS VORTAC and hold, continue climb-in-hold to 8000 (TACAN aircraft continue via CYS VORTAC R-016 to MARKL/CYS 10 DME and hold N, RT, 196° inbound).
--	-----------	--

ATIS 134.425 278.3	CHEYENNE APP CON 124.55 263.075	CHEYENNE TOWER * 118.7 (CTAF) 0 257.8	GND CON 121.9 254.275	UNICOM 122.95
------------------------------	---	---	---------------------------------	-------------------------



ELEV	6160	TDZE	6121
------	------	------	------



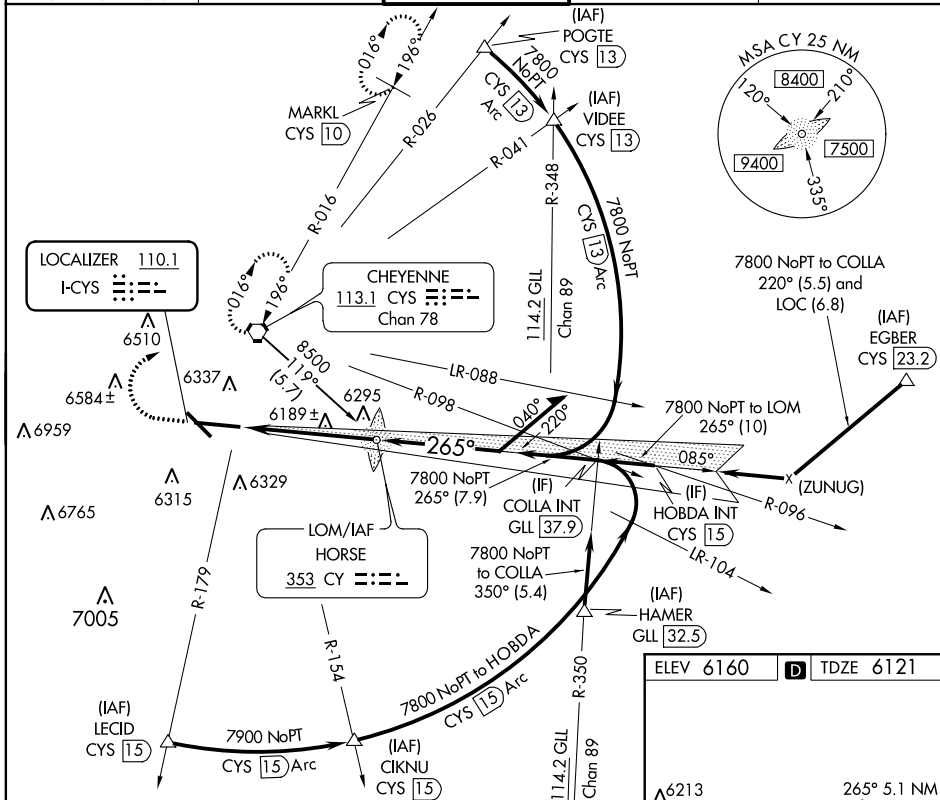
LOC I-CYS 110.1	APP CRS 265°	Rwy Idg 7985
		TDZE 6121
		Apt Rlev 6160

ILS or LOC RWY 27

CHEYENNE RGNL/JERRY OLSON FIELD (CYS)

⚠ For inoperative MALSR, increase S-LOC 27 Cat D visibility to RVR 5000. ⚠ *RVR 1800 authorized with the use of FD or AP or HUD to DA.	MALSR 	MISSED APPROACH: Climb to 6700, then climbing right turn to 8000 direct CYS VORTAC and hold. (TACAN aircraft continue via CYS R-016 to MARKL/10 DME and hold N, RT, 196° inbound.)
---	------------------	---

ATIS 134.425 278.3	CHEYENNE APP CON 124.55 263.075	CHEYENNE TOWER * 118.7 (CTAF) 0 257.8	GND CON 121.9 254.275	UNICOM 122.95
------------------------------	---	---	---------------------------------	-------------------------



6700

8000

CYS

↑

↷

⬡

CY LOM

7791

085°

265°

7800

7800

GS 3.00°

TCH 55

Remain within 10 NM

5.1 NM

6218

6189

6171

6280

TWR 6256

9270 x 150

0.4% DOWN

0.7% UP

from FAF

27

CATEGORY	A	B	C	D
S-ILS 27	* 6321/24 200 (200-½)			
S-LOC 27	6440/24 319 (300-½)			6440/40 319 (300-¾)
CIRCLING	6660-1 500 (500-1)	6660-1½ 500 (500-1½)	6720-2 560 (600-2)	

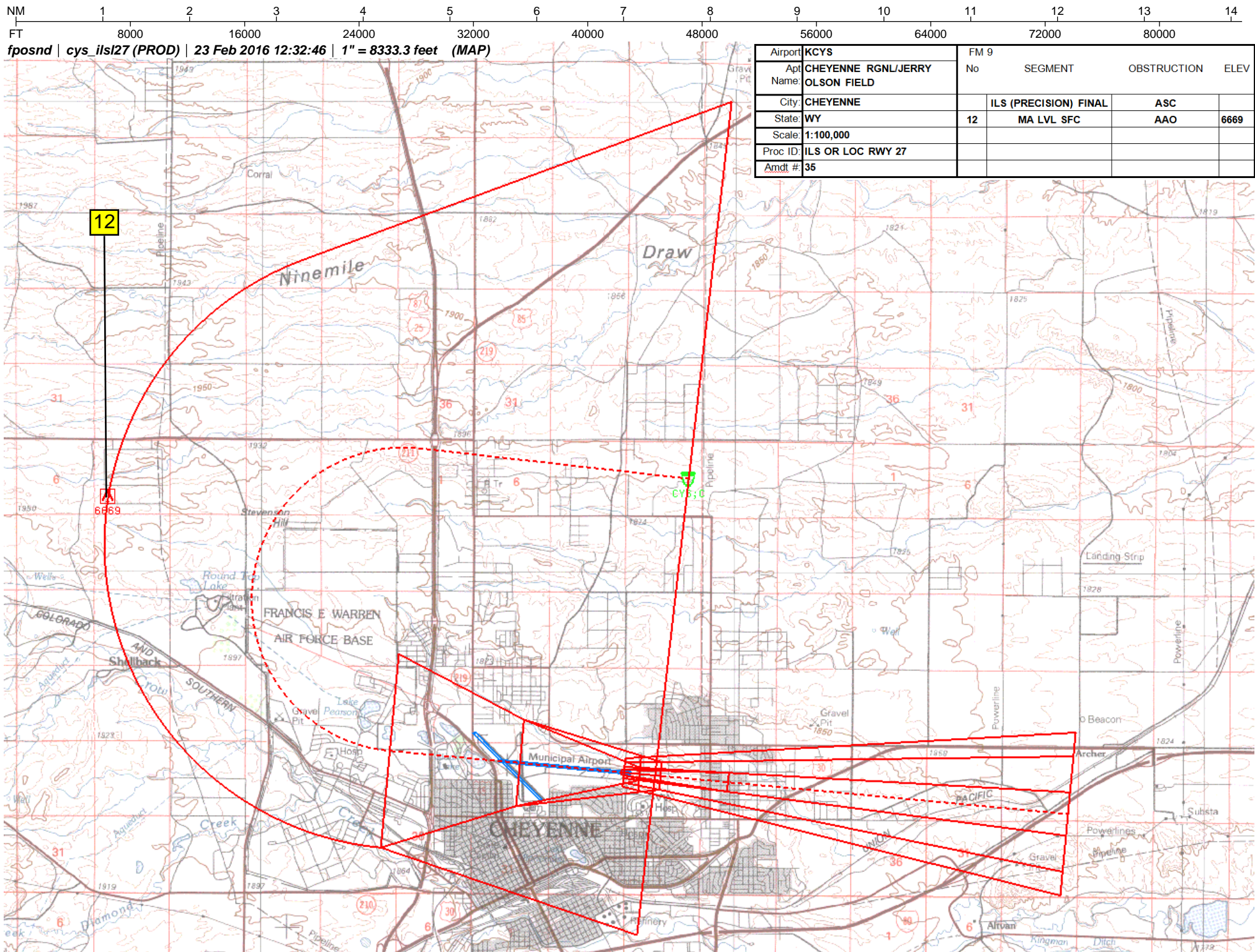
Knots

60 90 120 150 180

Min:Sec

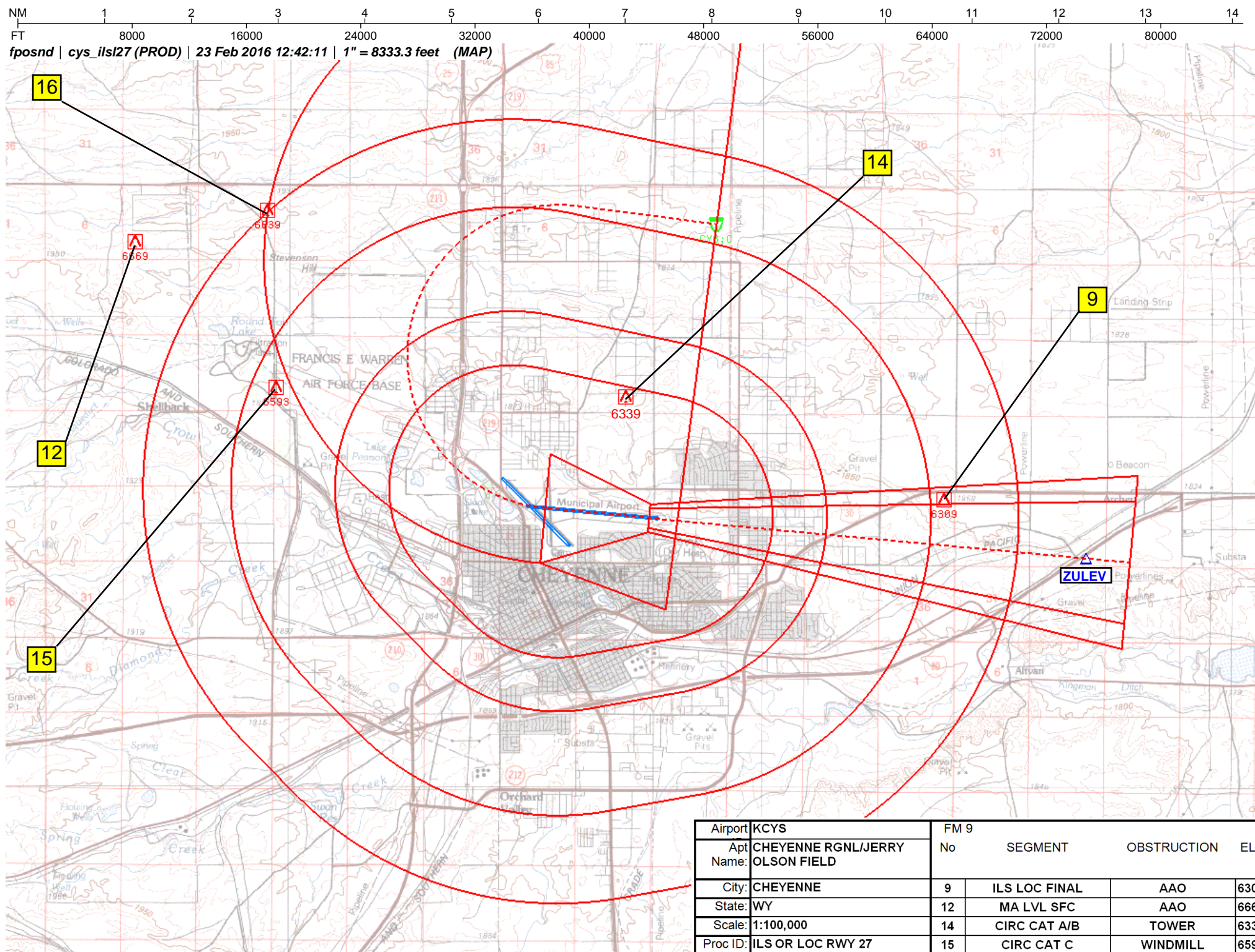
5:06 3:24 2:33 2:02 1:42

FAF to MAP 5.1 NM

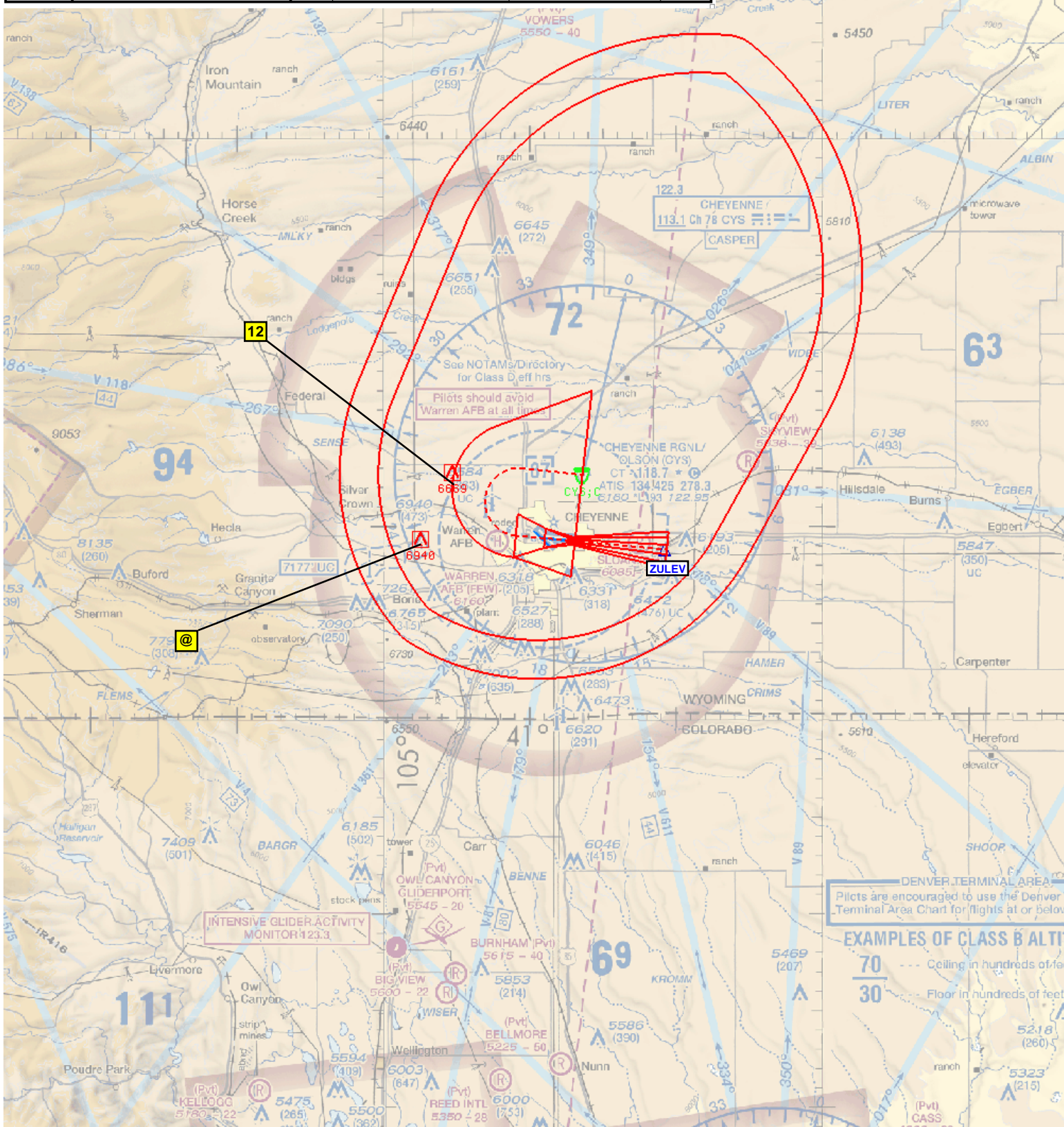


fposnd | cys_ils127 (PROD) | 23 Feb 2016 12:32:46 | 1" = 8333.3 feet (MAP)

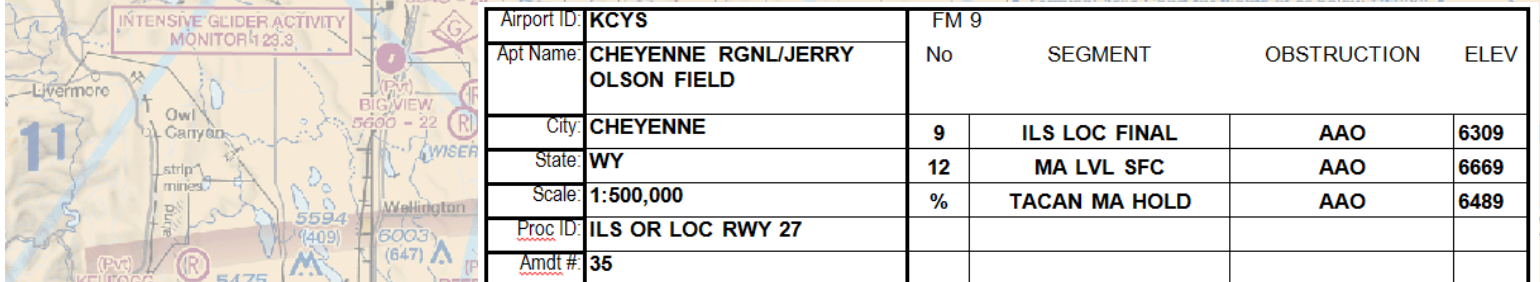
Airport	KCYS	FM 9			
Apt Name	CHEYENNE RGNL/JERRY OLSON FIELD	No	SEGMENT	OBSTRUCTION	ELEV
City	CHEYENNE		ILS (PRECISION) FINAL	ASC	
State	WY	12	MA LVL SFC	AAO	6669
Scale	1:100,000				
Proc ID	ILS OR LOC RWY 27				
Amdt #	35				



Airport ID:	KCYS	FM 9			
Apt Name:	CHEYENNE RGNL/JERRY OLSON FIELD	No	SEGMENT	OBSTRUCTION	ELEV
City:	CHEYENNE		ILS (PRECISION) FINAL	ASC	
State:	WY	12	MA LVL SFC	AAO	6669
Scale:	1:500,000	@	MA HOLD (C-I-H)	AAO	6940
Proc ID:	ILS OR LOC RWY 27				
Amdt #:	35				



***fposnd* | *cys_tacan* (PROD) | 23 Feb 2016 13:04:23 | 1" = 41666.7 feet (MAP)**



Airport ID:	KCYS	FM 9			
Apt Name:	CHEYENNE RGNL/JERRY OLSON FIELD	No	SEGMENT	OBSTRUCTION	ELEV
City:	CHEYENNE	9	ILS LOC FINAL	AAO	6309
State:	WY	12	MA LVL SFC	AAO	6669
Scale:	1:500,000	%	TACAN MA HOLD	AAO	6489
Proc ID:	ILS OR LOC RWY 27				
Amdt #:	35				

fposnd | cys_ils127 (PROD) | 23 Feb 2016 12:55:43 | 1" = 41666.7 feet (MAP)

Airport	KCY5	FM 9			
Apt Name:	CHEYENNE RGNL/JERRY OLSON FIELD	No	SEGMENT	OBSTRUCTION	ELEV
City:	CHEYENNE	1	FEEDER	TOWER	6472
State:	WY	3	INITIAL HAMER	AAO	6119
Scale:	1:500,000	5	INITIAL EGBER	TOWER	6138
Proc ID:	ILS OR LOC RWY 27	7	INTERMEDIATE	AAO	6239
Amdt #:	35	9	ILS LOC FINAL	AAO	6309
		12	MA LVL SFC	AAO	6669
		#	MA HOLD	AAO	6699
		&	HOLD-IN-LIEU	AAO	6219

