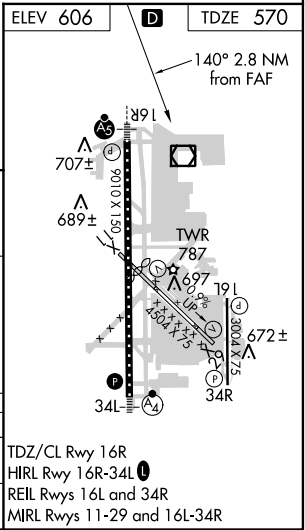
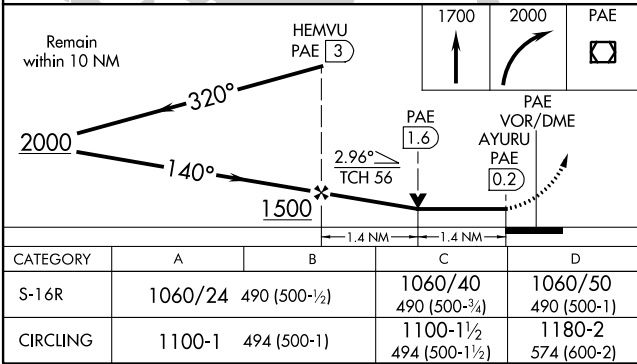
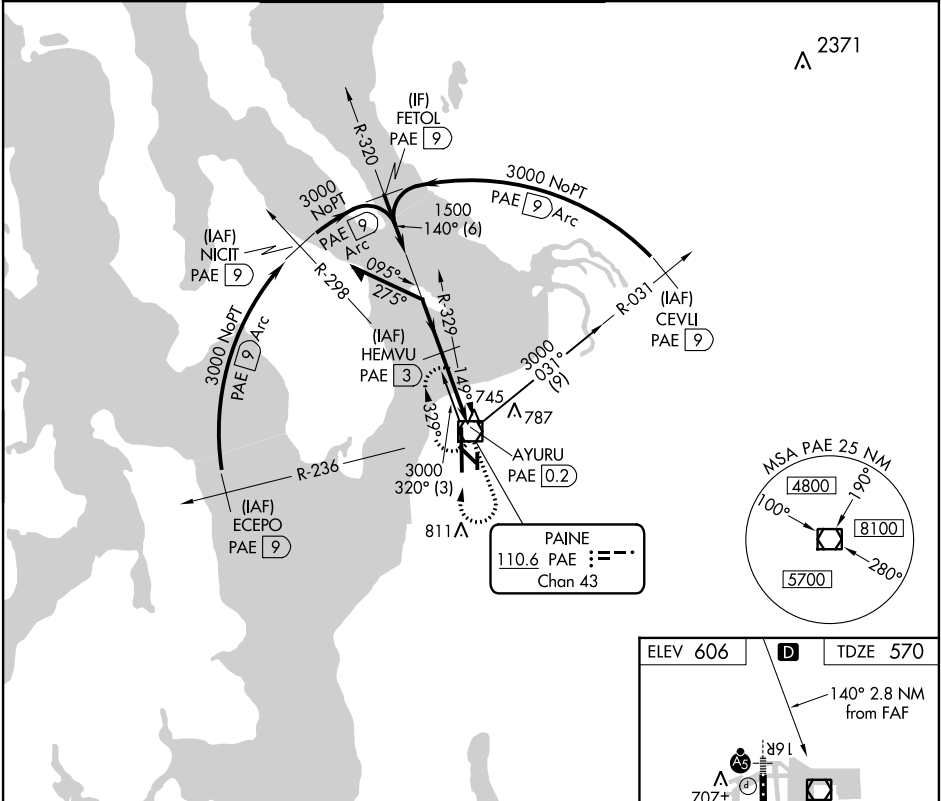


Flight Procedure Tracking Form		Action: CANCELLATION	Task Type: IAP	Date Open: 03/18/2016	Task #: 2014090528699301007	Request #: 20140905286993
Procedure: VOR/DME RWY 16R AMDT 0A				Airport ID: KPAE	Airport: SNOHOMISH COUNTY (PAINE FLD)	Reimbursable #: NO
City: EVERETT	ST: WA	GPS #:	Estimated Chart Date: 12/07/2017		FICO #:	
Fac ID: PAE		Fac. Type: VOR_DME			Specialist: PETER GUIMOND	
Procedure Review						
	Rec'd	Rel'd	Full Name		Comments	
Lead:	06/02/2017					
QA:			J ZEDER 08/24/2017			
Liaison:						
Procedure Comments:			ENROUTE-NON			
			Remark Type:		INFORMATION	
CONTACT: ROBERT HAMILTON, AJV-5422 LEAD, 405.954.4608						

VOR/DME PAE	APP CRS	Rwy Idg	9010
110.6	140°	TDZE	570
Chan 43		Apt Elev	606

VOR/DME RWY 16R
SNOHOMISH COUNTY (PAINE FIELD) (P.A.E)

ATIS 128.65		SEATTLE APP CON 128.5 306.9		PAINE TOWER★ (E of Rwy 16L-34R) (W of Rwy 16R-34L) 120.2 256.7 132.95 (CTAF) 256.7		GND CON 121.8 339.8		CLNC DEL 126.75		UNICOM 122.95	
----------------	--	--------------------------------	--	--	--	------------------------	--	--------------------	--	------------------	--



NW-1, 20 JUL 2017 to 17 AUG 2017

NW-1, 20 JUL 2017 to 17 AUG 2017