

Flight Procedure Tracking Form		Action: FLIGHT CHECK	Task Type: IAP	Date Open: 09/05/2014	Task #: 2014090528699301004	Request #: 20140905286993
Procedure: RNAV (GPS) Y RWY 16R AMDT 2			Airport ID: KPAE	Airport: SNOHOMISH COUNTY (PAINE FLD)		Reimbursable #: NO
City: EVERETT	ST: WA	GPS #:	Estimated Chart Date: 12/07/2017		FICO #:	
Fac ID: N/A		Fac. Type:			Specialist: PETER GUIMOND	
Procedure Review						
	Rec'd	Rel'd	Full Name	Comments		
Lead:	06/02/2017					
QA:			J ZEDER 08/29/2017			
Liaison:						
Procedure Comments:			Remark Type: INFORMATION			
ENROUTE-NON PENDING DATA USED. ASSIGNED MAGVAR: KPAE: OLD 17E - NEW 16E. CONTACT: ROBERT HAMILTON, AJV-5422 LEAD, 405.954.4608						

WAAS
CH 60911
W16B

APP CRS
163°

Rwy Idg
TDZE
Apt Elev
9010
570
608

RNAV (GPS) Y RWY 16R

SNOHOMISH COUNTY (PAINE FIELD) (P.A.E.)

T

For uncompensated Baro-VNAV systems, LNAV/VNAV NA below -5°C (23°F) or above 54°C (130°F). Circling Rwy 34R NA at night. DME/DME RNP-0.3 NA. For inop ALS, increase LNAV/VNAV Cats A/B visibility to RVR 5000.

MALSR

MISSED APPROACH:
Climb to 1100 then climbing right turn to 2000 direct ECEPO and hold.

ATIS 128.65	SEATTLE APP CON 128.5 306.9	PAINE TOWER* (E of Rwy 16L-34R) (W of Rwy 16R-34L) 120.2 256.7 132.95 (CTAF) 256.7	GND CON 121.8 339.8	CLNC DEL 126.75	UNICOM 122.95
----------------	--------------------------------	--	------------------------	--------------------	------------------

NEW

3090 A
2944 A
2371 A

PROTOTYPE-NOT FOR NAVIGATION

MSA RW16R 25 NM
7900

Procedure NA for arrival at PAE VOR/DME on V287 southeast bound.

3000 NoPT 137° (6) (153°T)

AMEKE (IAF)

4 NM

163° (179°T)

343° (359°T)

IF/IAF EYWOK

2000 (179°T)

163° (6.8)

ITIPE (FAF)

3000 to EYWOK 342° (11.2) (358°T)

735 ± 745 A 787

PAINE PAE

811

ECEPO (072°T) 056° 236° (252°T)

4 NM Holding Pattern

VGSI and descent angles not coincident (VGSI Angle 3.00/TCH 74).

EYWOK

3000 343° (359°T) 163° (179°T)

GP 3.00° TCH 57

2000

ITIPE 2000

* 1.1 NM to RW16R

RW16R

6.8 NM 3.2 NM 1.1

*LNAV only

CATEGORY	A	B	C	D
LPV DA	770/18	200 (200-½)	NA	
LNAV/VNAV DA	894/30	324 (300-⅝)	NA	
LNAV MDA	1000/24	430 (400-½)	NA	
CIRCLING	1100-1	492 (500-1)	NA	

ELEV 608 TDZE 570

163° to RW16R

TDZ/CL Rwy 16R
HIRL Rwy 16R-34L
REIL Rws 16L and 34R
MIRL Rws 11-29 and 16L-34R

EVERETT, WASHINGTON

Amdt 2 FIG

47°54'N-122°17'W

SNOHOMISH COUNTY (PAINE FIELD) (P.A.E.)

RNAV (GPS) Y RWY 16R

WAAS
CH **60911**
W16B

APP CRS
162°

Rwy Idg
TDZE
Apt Elev
9010
570
606

RNAV (GPS) Y RWY 16R

SNOHOMISH COUNTY (PAINE FIELD) (P.A.E.)

▼

▲

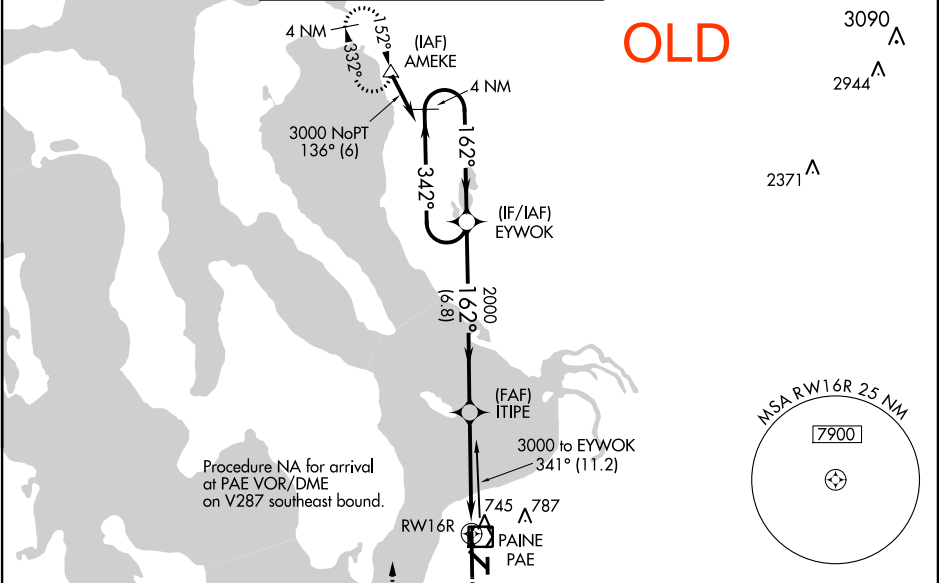
For uncompensated Baro-VNAV systems, LNAV/VNAV NA below -16°C (4°F) or above 54°C (130°F). DME/DME RNP-0.3 NA. When using Seattle-Tacoma Intl altimeter setting; for inoperative MALSR, increase LPV Cats A and B visibility to RVR 4500. When local altimeter setting not received, use Seattle-Tacoma Intl altimeter setting and increase all DA 88 feet and all MDA 100 feet; increase LNAV/VNAV Cats A and B visibility to RVR 5000. Baro-VNAV and VDP NA when using Seattle-Tacoma Intl altimeter setting.

MALSR

MISSED APPROACH:

Climb to 1100 then climbing right turn to 3000 direct AMEKE and hold.

ATIS	SEATTLE APP CON	PAINE TOWER* (E of Rwy 16L-34R) (W of Rwy 16R-34L)		GND CON	CLNC DEL	UNICOM
128.65	128.5 306.9	120.2 256.7	132.95 (CTAF) 256.7	121.8 339.8	126.75	122.95



VGSI and ILS glidepath not coincident (VGSI Angle 3.00/TCH 74).

4 NM Holding Pattern

1100

3000

AMEKE

*LNAV only

CATEGORY	A	B	C	D
LPV DA	770/24	200 (200-½)	NA	
LNAV/VNAV DA	944/40	374 (400-¾)	NA	
LNAV MDA	1060/24	490 (500-½)	NA	
CIRCLING	1100-1	494 (500-1)	NA	

ELEV 606

D

TDZE 570

TDZ/CL Rwy 16R

HIRL Rwy 16R-34L

REIL Rwys 16L and 34R

MIRL Rwys 11-29 and 16L-34R

AMEKE Initial, Intermediate, Missed

CTC WHIDBEY APP WITHIN
20 NM ON 120.7 270.8

#5
Intermediate
819 AAO

#3
Initial
742 AAO

FOR REASONS OF NATIONAL SECURITY
PILOTS ARE REQUESTED TO AVOID FLIGHT
AT AND BELOW 1900' MSL IN THIS AREA

1

**Missed Hold
777 ATC Tower**

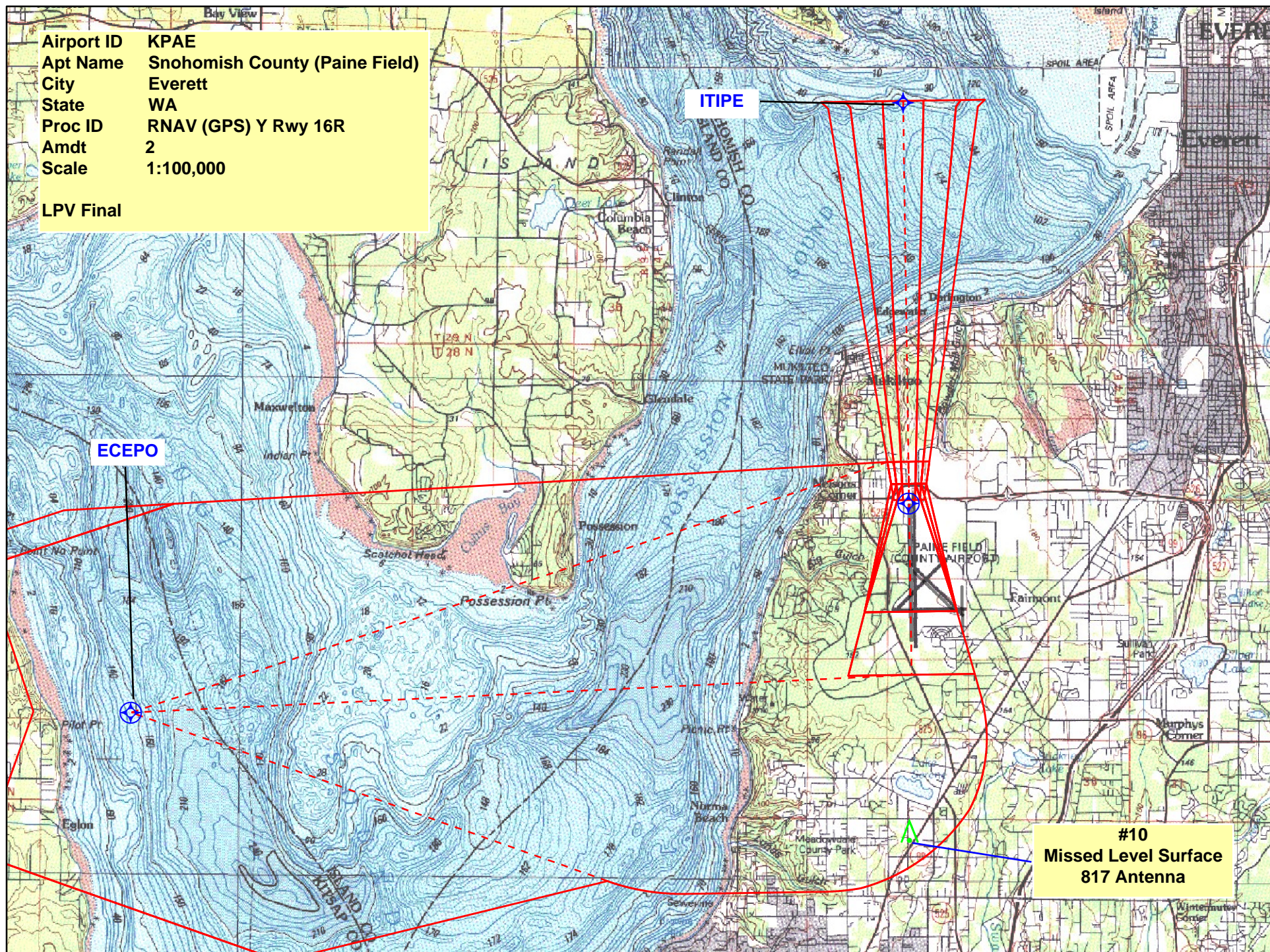
#10
Missed Level Surface
817 Antenna

NOTICE
FOR REASONS OF NATIONAL SECURITY
PILOTS ARE REQUESTED TO AVOID FLIGHT
AT AND BELOW 2900' MSL IN THIS AREA

Magnetic disturbance of as much as 6° exists at ground level between Maple Valley

Airport ID KPAE
Apt Name Snohomish County (Paine Field)
City Everett
State WA
Proc ID RNAV (GPS) Y Rwy 16R
Amdt 2
Scale 1:100,000

LPV Final



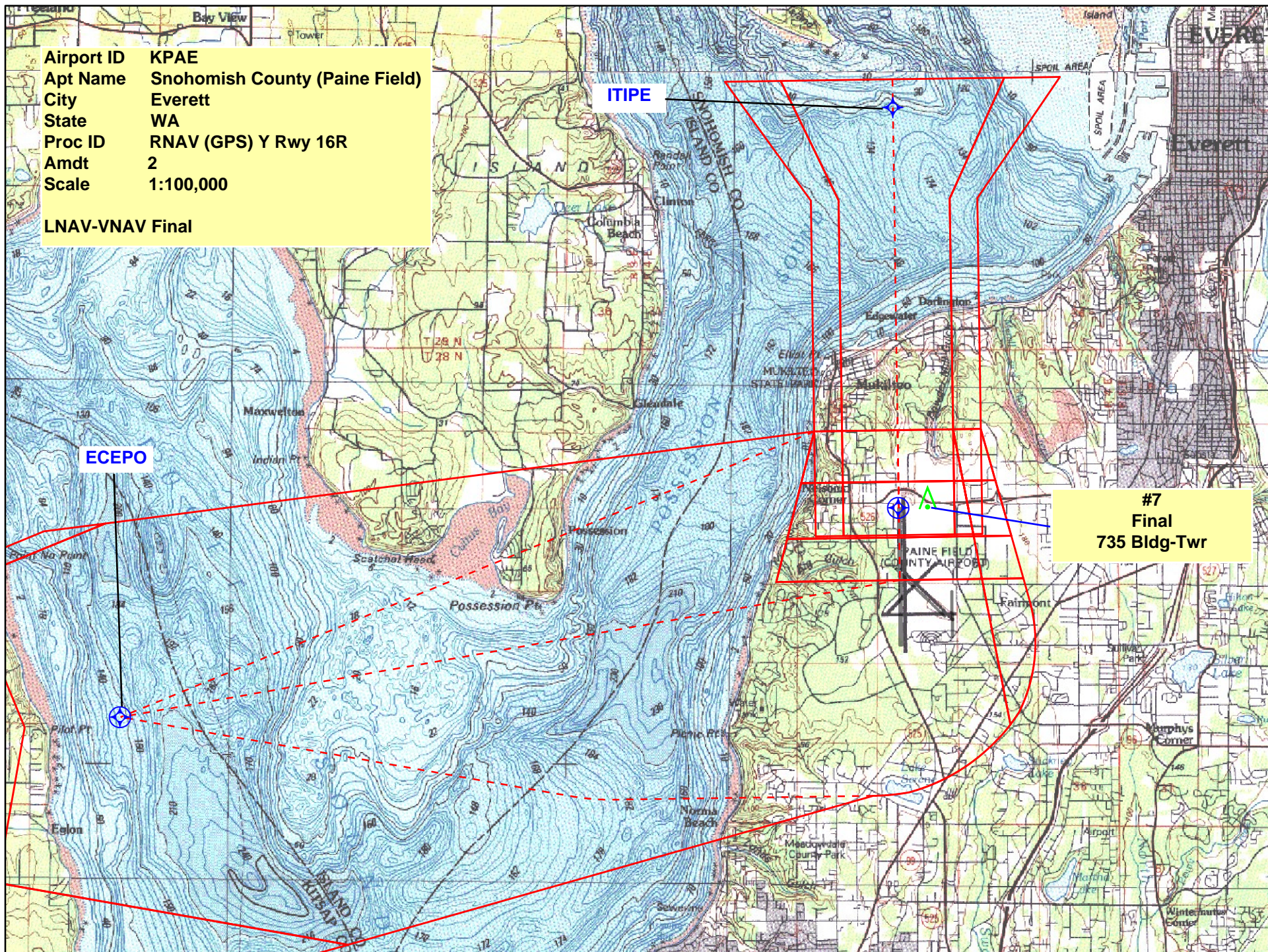
Airport ID KPAE
Apt Name Snohomish County (Paine Field)
City Everett
State WA
Proc ID RNAV (GPS) Y Rwy 16R
Amdt 2
Scale 1:100,000

LNAV-VNAV Final

ITPE

ECEPO

#7
Final
735 Bldg-Twr



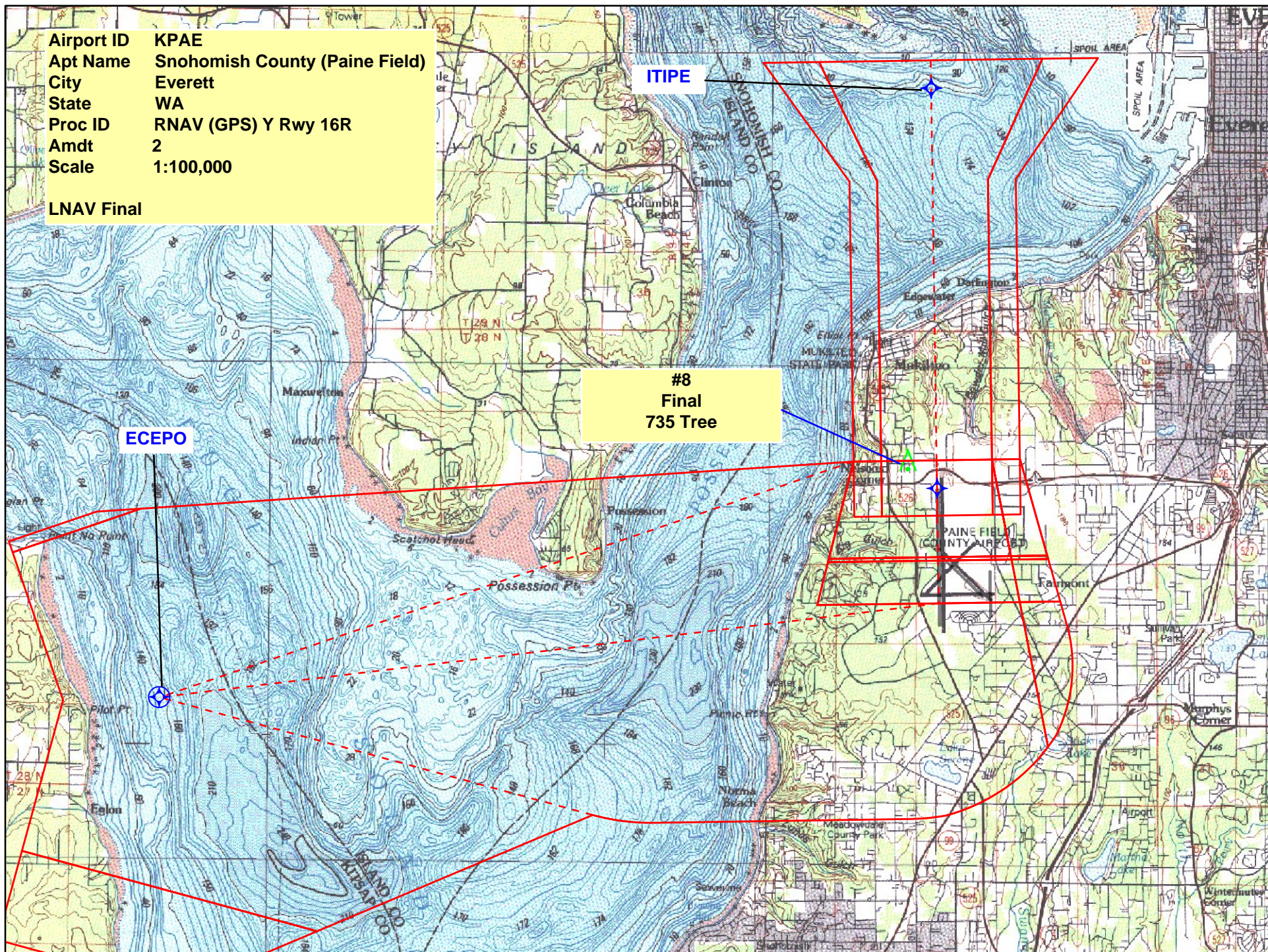
Airport ID KPAE
Apt Name Snohomish County (Paine Field)
City Everett
State WA
Proc ID RNAV (GPS) Y Rwy 16R
Amdt 2
Scale 1:100,000

LNAV Final

ITYPE

#8
Final
735 Tree

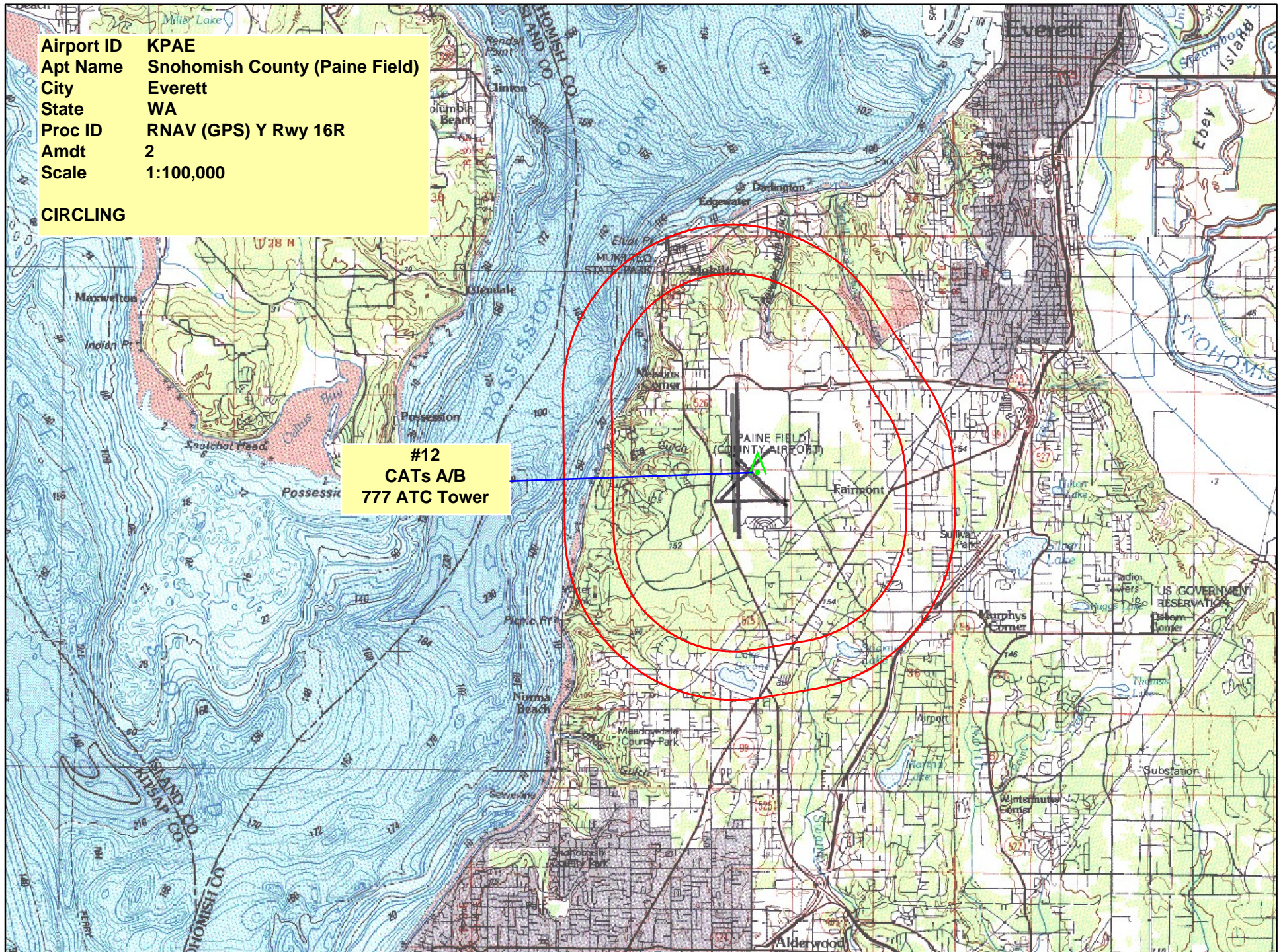
ECEPO



Airport ID KPAE
Apt Name Snohomish County (Paine Field)
City Everett
State WA
Proc ID RNAV (GPS) Y Rwy 16R
Amdt 2
Scale 1:100,000

CIRCLING

#12
CATs A/B
777 ATC Tower



TERMINAL AIRSPACE DATA REQUIREMENTS

City: EVERETT		State: WA	
Airport Name: SNOHOMISH COUNTY (PAINE FLD)		ID: KPAE	
Procedure: RNAV (GPS) Y RWY 16R		Amendment: 2	
Docket #:			
ALL DIST TO 1/100 NM; ELEV TO NEAREST FT; COORD TO 1/100 SEC; DEG TO 1/100 DG.			
1.	Distance from	THLD	to 1000' point 3.08
2.	Width of	FINAL	segment at 1000' point 1.20
3.	True Course of	FINAL	segment containing 1000' point 179.15
4.	High Terrain in	FINAL	segment containing 1000' point 561
5.	Distance from	THLD	to 1500' point 4.34
6.	Width of	FINAL	segment at 1500' point 2.13
7.	True Course of	FINAL	segment containing 1500' point 179.15
8.	High Terrain in	FINAL	segment containing 1500' point 561
9.	Threshold Coordinates (if straight-in)		47 55 16.81 N / 122 17 09.06 W
10.	ARP Coordinates		47 54 25.20 N / 122 16 53.70 W
11.	Runway Approach End and distance furthest from ARP: Runway 16R Distance 0.88 NM		
12.	FAF Coordinates		47 59 36.74 N / 122 17 14.81 W
Remarks: MISSED APPROACH SEGMENT AND MISSED APPROACH HOLDING AT ECEPO (PATTERN 4) REQUIRES APPLICATION OF 1000 FOOT AIRSPACE.			