

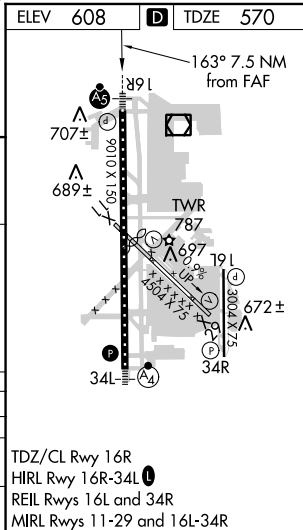
Flight Procedure Tracking Form		Action: FLIGHT CHECK	Task Type: IAP	Date Open: 09/05/2014	Task #: 2014090528699301002	Request #: 20140905286993
Procedure: ILS OR LOC Z RWY 16R AMDT 1			Airport ID: KPAE	Airport: SNOHOMISH COUNTY (PAINE FLD)		Reimbursable #: NO
City: EVERETT	ST: WA	GPS #:	Estimated Chart Date: 12/07/2017		FICO #:	
Fac ID: PAE		Fac. Type: ILS			Specialist: PETER GUIMOND	
Procedure Review						
	Rec'd	Rel'd	Full Name	Comments		
Lead:	06/02/2017					
QA:			J ZEDER 08/29/2017 16			
Liaison:						
Procedure Comments: ENROUTE-NON Remark Type: INFORMATION PENDING DATA USED. ASSIGNED MAGVAR: KPAE: OLD 17E - NEW 16E. CONTACT: ROBERT HAMILTON, AJV-5422 LEAD, 405.954.4608						

ILS Z or LOC Z RWY 16R
SNOHOMISH COUNTY (PAINE FIELD) (PAE)

MISSED APPROACH: Climb to 1100 then climbing right turn to 3000 on heading 280° and PAE VOR/DME R-236 to ECEPO/PAE 9.00 DME and hold, continue climb-in-hold to 3000.

3094 Δ 

Procedure NA for arrivals at PAE VOR/DME on V23 southeast bound.



ILS Z RWY 16R (SA CAT II)
SNOHOMISH COUNTY (PAINE FIELD) (PAE)

- MALSR
A5 T

MISSED APPROACH: Climb to 1100 then climbing right turn to 3000 on heading 280° and PAE VOR/DME R-236 to ECEPO/PAE 9.00 DME and hold, continue climb-in-hold to 3000.

VGSI and ILS glidepath not coincident (VGSI Angle 3.00/TCH 74).					1100 ↑	3000 hdg 280°	PAE R-236	ECEPO PAE 9
One Minute Holding Pattern		WEBVE INT PAE 13.9	JUGBA PAE 7.6					
CATEGORY	A		B	C	D			
S-ILS 16R	RA 116/12 100 DA 670							

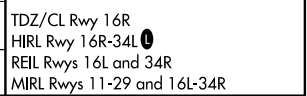
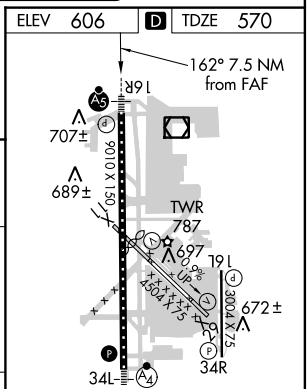
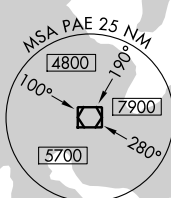
SA CATEGORY II ILS-SPECIAL AIRCREW
& AIRCRAFT CERTIFICATION REQUIRED

TDZ/CL Rwy 16R
HIRL Rwy 16R-34L **L**
REIL Rwy 16L and 34R
MIRL Rwy 11-29 and 16L-34R

ILS Z or LOC/DME Z RWY 16R
SNOHOMISH COUNTY (PAINE FIELD) (PAE)

MALSR

OLD



NW-1, 17 AUG 2017 to 14 SEP 2017

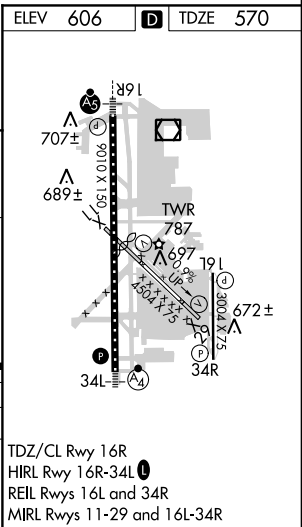
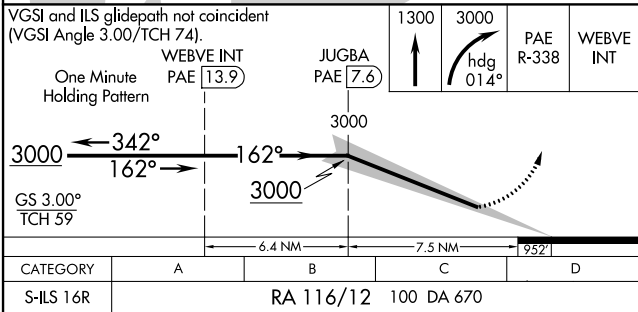
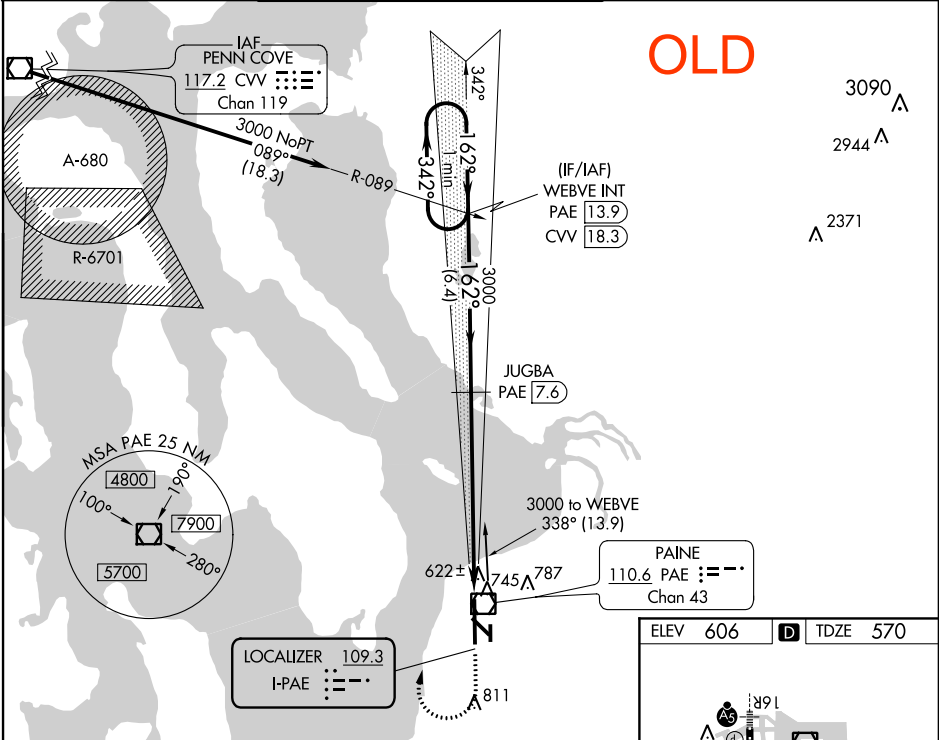
NW-1, 17 AUG 2017 to 14 SEP 2017

LOC I-PAE	APP CRS	Rwy Idg	9010
109.3	162°	TDZE	570
		Apt Elev	606

ILS Z RWY 16R (SA CAT II)
SNOHOMISH COUNTY (PAINE FIELD) (PAE)

<p>⚠ DME from PAE VOR/DME. Simultaneous reception of I-PAE and PAE DME required. Reduced lighting requires specific OPSPEC, MSPEC or LOA approval and use of autoland or HUD to touchdown. NA when control tower is closed.</p>	<p>MALSR</p> <p>A5</p>	<p>MISSED APPROACH: Climb to 1300 then climbing right turn to 3000 on heading 014° and PAE VOR/DME R-338 to WEBVE INT/PAE 13.9 DME and hold.</p>
--	--------------------------------------	---

ATIS	SEATTLE APP CON	PAINE TOWER*	GND CON	CLNC DEL	UNICOM
128.65	128.5 306.9	(E of Rwy 16L-34R) (W of Rwy 16R-34L) 120.2 256.7 132.95 (CTAF) 256.7	121.8 339.8	126.75	122.95

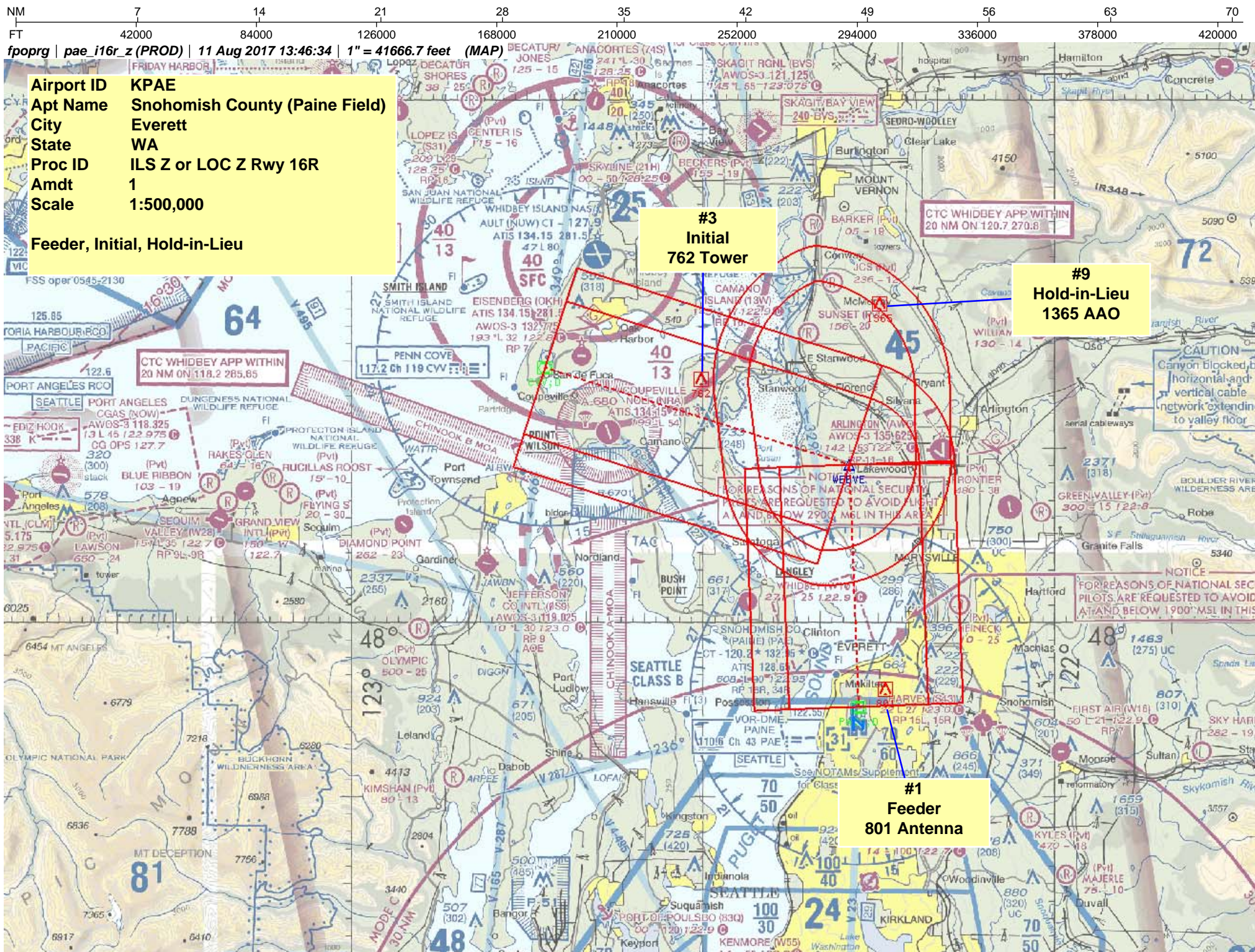


SA CATEGORY II ILS-SPECIAL AIRCREW & AIRCRAFT CERTIFICATION REQUIRED

TDZ/CL Rwy 16R
HIRL Rwy 16R-34L
REIL Rwy 16L and 34R
MIRL Rwy 11-29 and 16L-34R

NW-1, 17 AUG 2017 to 14 SEP 2017

NW-1, 17 AUG 2017 to 14 SEP 2017



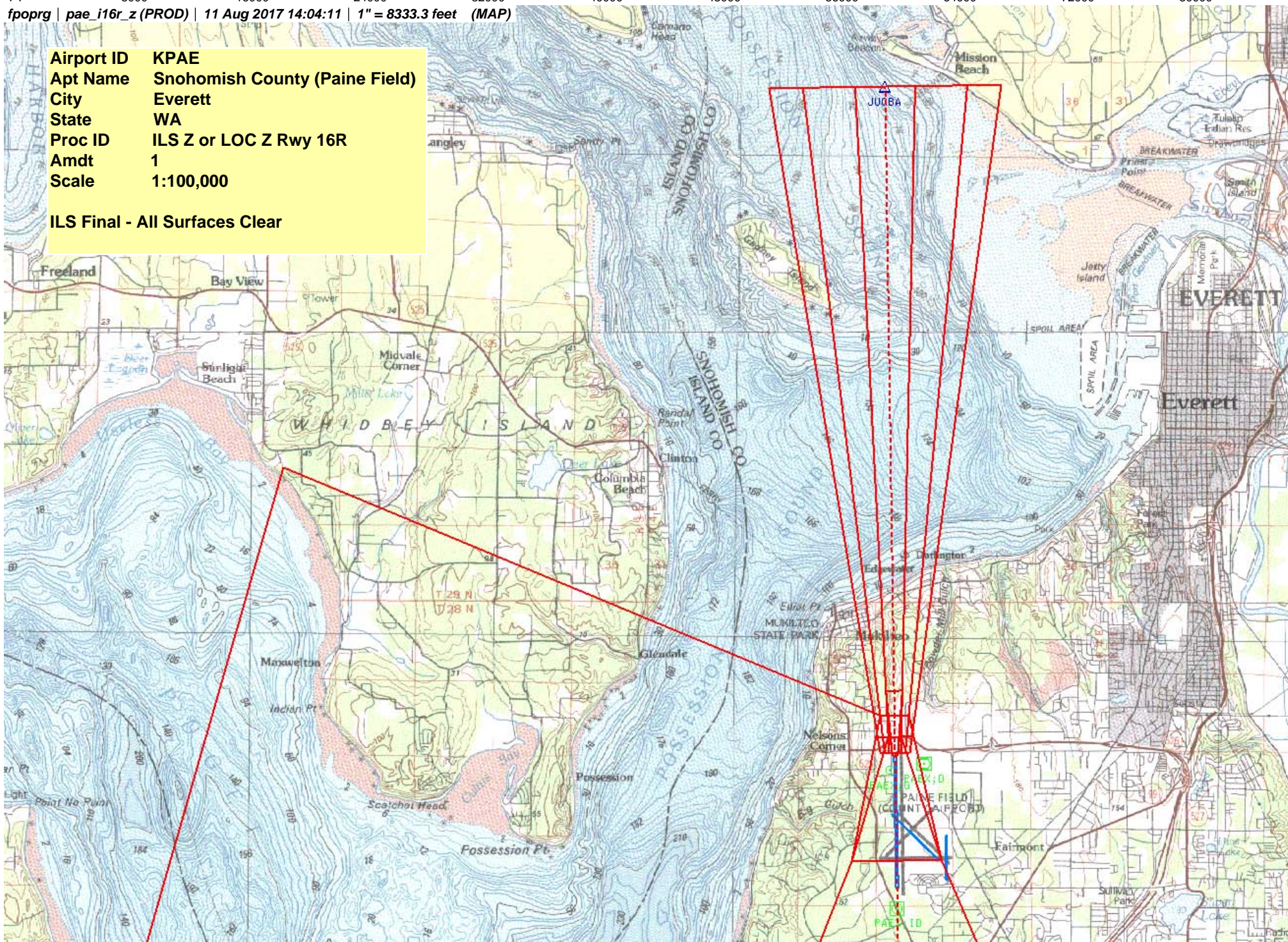
NM 1 2 3 4 5 6 7 8 9 10 11 12 13 14

FT 8000 16000 24000 32000 40000 48000 56000 64000 72000 80000

fpoprg | pae_i16r_z (PROD) | 11 Aug 2017 14:04:11 | 1" = 8333.3 feet (MAP)

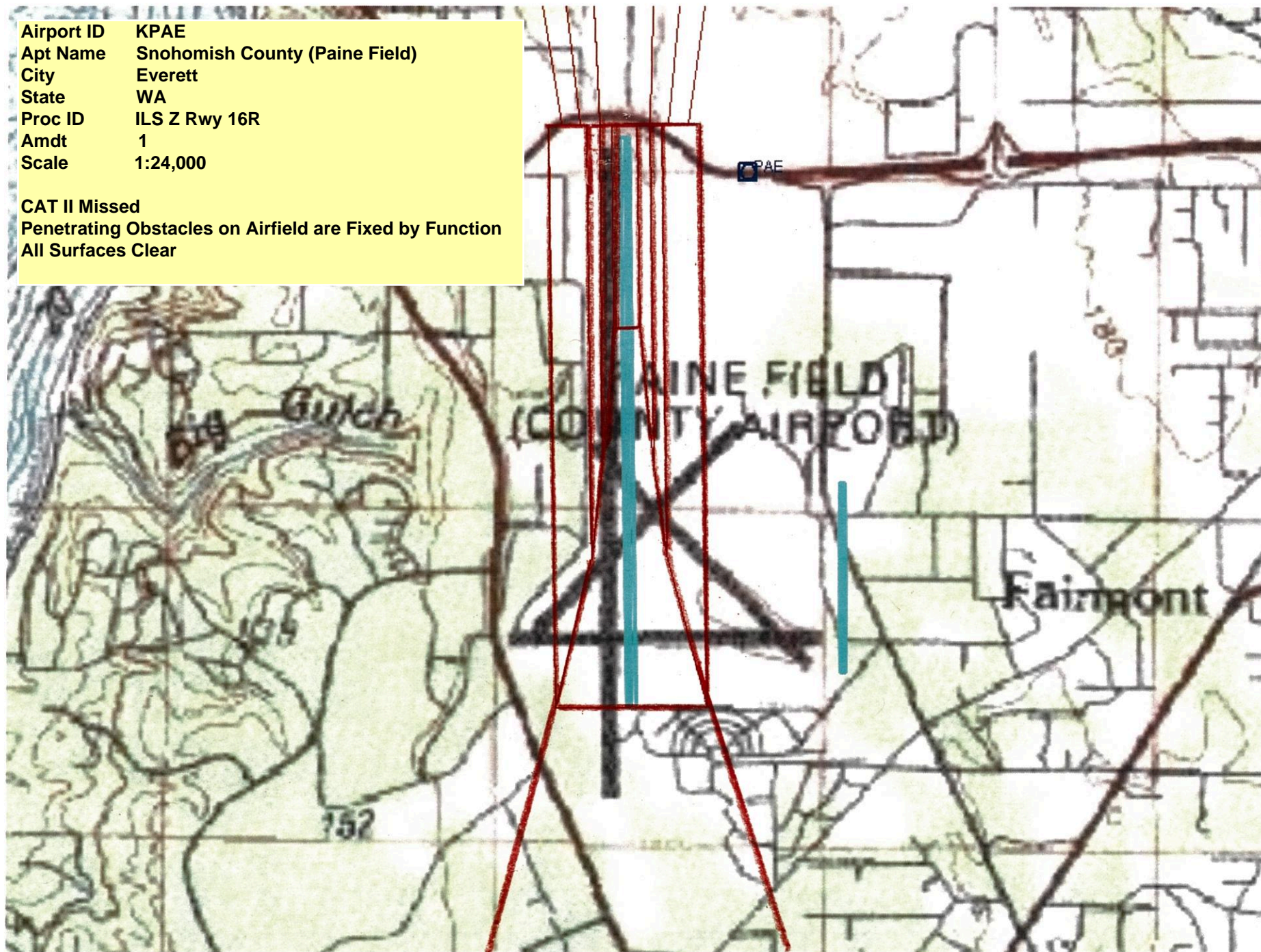
Airport ID KPAE
Apt Name Snohomish County (Paine Field)
City Everett
State WA
Proc ID ILS Z or LOC Z Rwy 16R
Amdt 1
Scale 1:100,000

ILS Final - All Surfaces Clear



Airport ID KPAE
Apt Name Snohomish County (Paine Field)
City Everett
State WA
Proc ID ILS Z Rwy 16R
Amdt 1
Scale 1:24,000

CAT II Missed
Penetrating Obstacles on Airfield are Fixed by Function
All Surfaces Clear



NM 1 2 3 4 5 6 7 8 9 10 11 12 13 14

FT 8000 16000 24000 32000 40000 48000 56000 64000 72000 80000

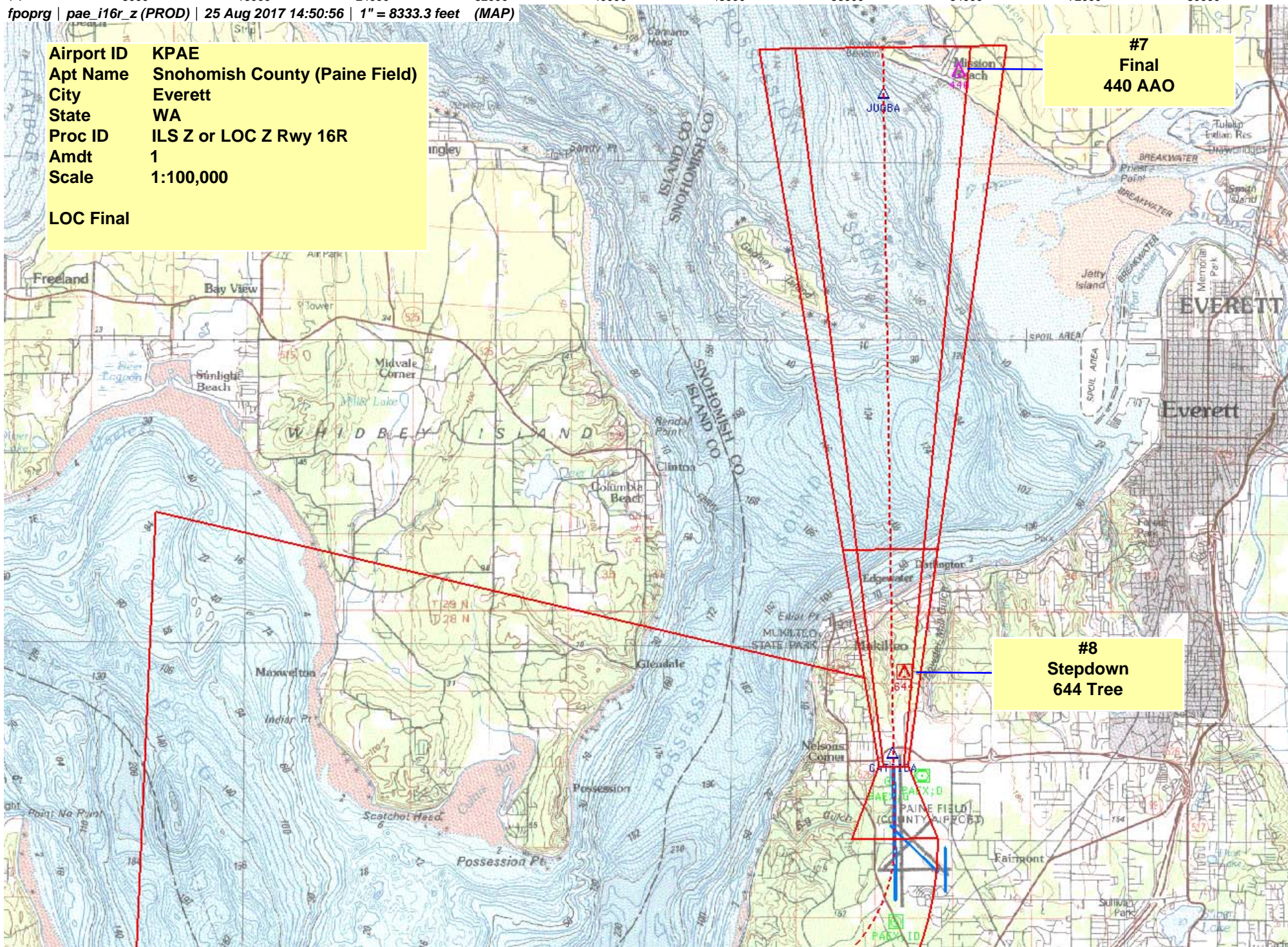
fpoprg | pae_i16r_z (PROD) | 25 Aug 2017 14:50:56 | 1" = 8333.3 feet (MAP)

Airport ID KPAE
Apt Name Snohomish County (Paine Field)
City Everett
State WA
Proc ID ILS Z or LOC Z Rwy 16R
Amdt 1
Scale 1:100,000

LOC Final

#7
Final
440 AAO

#8
Stepdown
644 Tree

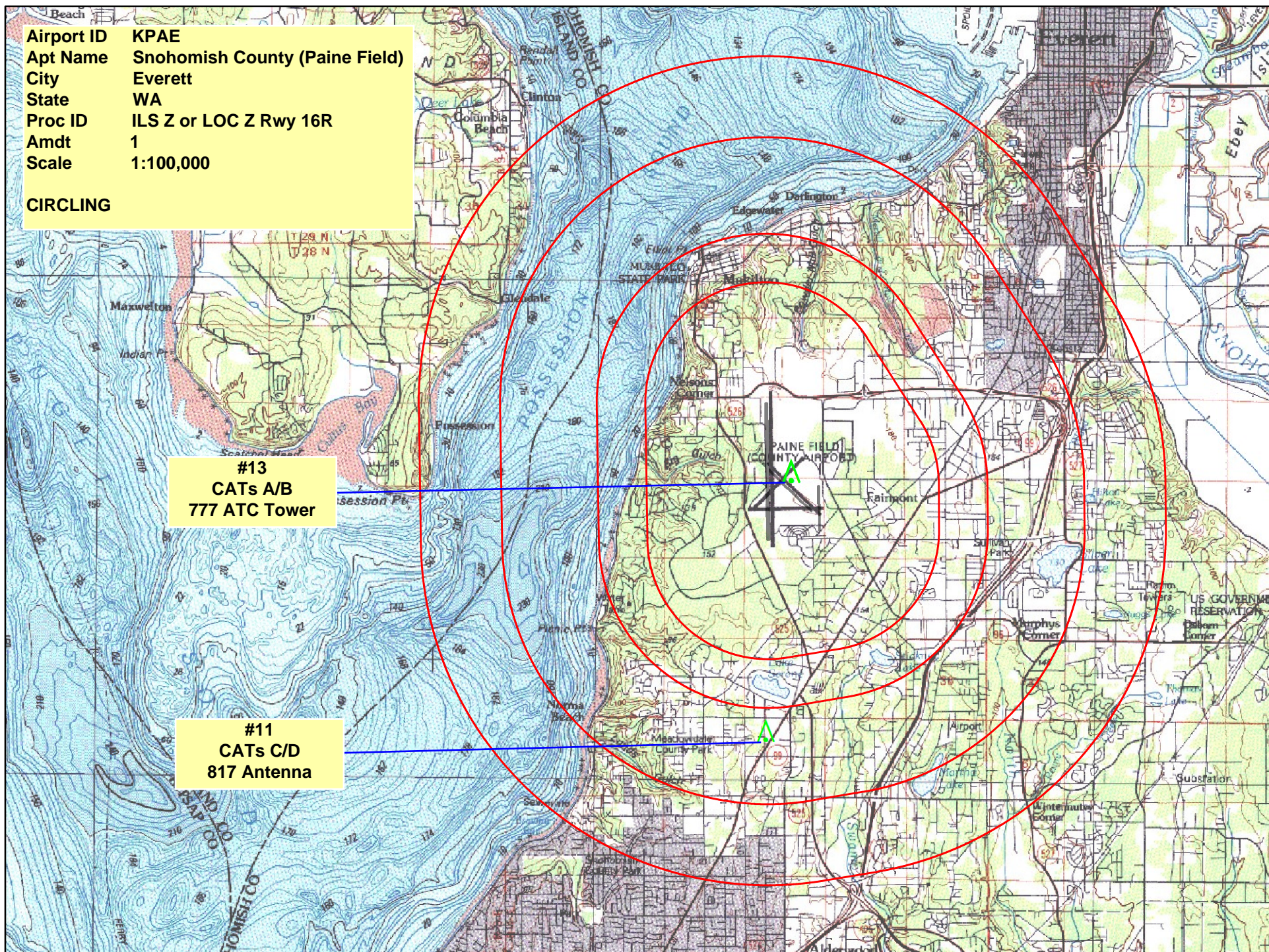


Beach
Airport ID KPAE
Apt Name Snohomish County (Paine Field)
City Everett
State WA
Proc ID ILS Z or LOC Z Rwy 16R
Amdt 1
Scale 1:100,000

CIRCLING

#13
CATs A/B
777 ATC Tower

#11
CATs C/D
817 Antenna



TERMINAL AIRSPACE DATA REQUIREMENTS

City: EVERETT Airport Name: SNOHOMISH COUNTY (PAINE FLD) Procedure: ILS OR LOC Z RWY 16R Docket #:	State: WA ID: KPAE Amendment: 1
ALL DIST TO 1/100 NM; ELEV TO NEAREST FT; COORD TO 1/100 SEC; DEG TO 1/100 DG.	
1. Distance from 2. Width of 3. True Course of 4. High Terrain in 5. Distance from 6. Width of 7. True Course of 8. High Terrain in 9. Threshold Coordinates (if straight-in) 10. ARP Coordinates 11. Runway Approach End and distance furthest from ARP: Runway 16R Distance 0.88 NM 12. FAF Coordinates	THLD to 1000' point FINAL segment at 1000' point FINAL segment containing 1000' point FINAL segment containing 1000' point THLD to 1500' point FINAL segment at 1500' point FINAL segment containing 1500' point FINAL segment containing 1500' point 47 55 16.81 N / 122 17 09.06 W 47 54 25.20 N / 122 16 53.70 W 48 02 45.00 N / 122 17 18.98 W
Remarks:	