

<b>Flight Procedure Tracking Form</b>		<b>Action:</b> FLIGHT CHECK	<b>Task Type:</b> IAP	<b>Date Open:</b> 08/26/2014	<b>Task #:</b> 2014082631624301001	<b>Request #:</b> 20140826316243
<b>Procedure:</b> APPROACH RNAV (GPS) C ORIG-B				<b>Airport ID:</b> KELN	<b>Airport:</b> BOWERS FIELD	<b>Reimbursable #:</b> NO
<b>City:</b> ELLENSBURG	<b>ST:</b> WA	<b>GPS #:</b>	<b>Estimated Chart Date:</b> 05/26/2016		<b>FICO #:</b>	
<b>Fac ID:</b> N/A		<b>Fac. Type:</b>			<b>Specialist:</b> BRETT CANNON	
<b>Procedure Review</b>						
	<b>Rec'd</b>	<b>Rel'd</b>	<b>Full Name</b>	<b>Comments</b>		
<b>Lead:</b>	07/15/2015					
<b>QA:</b>		3/9/16	D. Regier			
<b>Liaison:</b>						
<b>Procedure Comments:</b>			ENROUTE-NON	<b>Remark Type:</b> INFORMATION		
<p>P NOTAM: REMOVE CIRC NA NOTE, REQUEST FC NIGHT EVAL. CHANGE ELN VORTAC ARRIVAL NOTE.</p> <p><i>NOT TO Be sent until SAT PC Received</i></p> <p>CONTACT: LONNIE EVERHART/JOHNNIE BAKER, AJV-543 LEADS, 405.954.4576/5148</p> <p><i>Request Flight Mee'l Tabletop</i></p>						

[Print](#)

Project Name: KELN - DELETE NOTE/ADD CHART NOTE

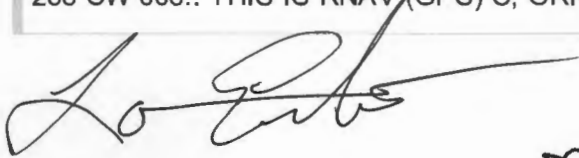
Project Reason: \*\*\*NOT TO BE SENT UNTIL RECEIPT OF SAT NIGHT EVAL PC. DELETE NOTE: CIRCLING TO RUNWAY 25 NA AT NIGHT. THERE ARE NO 20:1 PENETRATIONS TO RWY 25. RNAV (GPS) RWY 25 IS SCHEDULED FOR AMENDMENT 05/26/16 WITH THE RUNWAY EXTENSION, NOTE WILL BE REMOVED FROM THAT PROCEDURE AT THAT TIME. CHART DELETE PLANVIEW NOTE: PROCEDURE NA FOR ARRIVALS ON ELN VORTAC AIRWAY RADIALS 253 CW 003. CHART PLANVIEW NOTE CHANGED TO ELIMINATE CONFUSION FOR THE PILOTS AND MEET THE CRITERIA ACCORDING TO 8260.3 PARA 220 A OF NOT EXCEEDING 120 DEGREES.

Last Updated By: Brett Cannon

Last Updated At: 2016-03-04 14:18:22.909273

Status: Draft

IFDC X/XXXX ELN IAP BOWERS FIELD, ELLENSBURG, WA. RNAV (GPS)-C, ORIG-A... DELETE NOTE: CIRCLING TO RUNWAY 25 NA AT NIGHT. DELETE NOTE: HELICOPTER VISIBILITY REDUCTION BELOW 1 SM NA.. DELETE PLANVIEW NOTE: PROCEDURE NA FOR ARRIVALS ON ELN VORTAC AIRWAY RADIALS 253 CW 003.. THIS IS RNAV (GPS)-C, ORIG-B. 1603041418-PERM



ELLENSBURG, WASHINGTON

AL-130 (FAA)

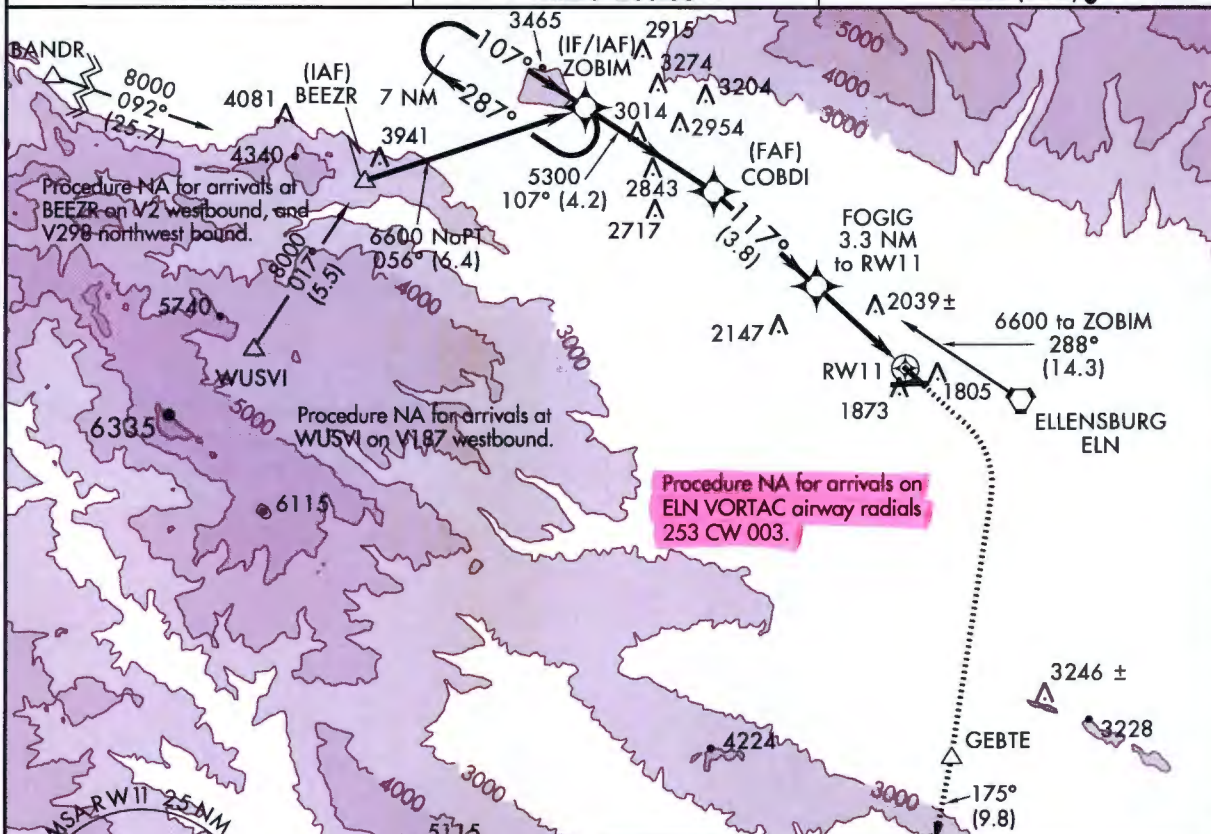
15344

APP CRS	Rwy Idg	N/A
117°	TDZE	N/A
	Apt Elev	1764

# **RNAV (GPS)-C** BOWERS FIELD (ELN)

<p>⚠ Circling to Rwy 25 NA at night. DME/DME RNP-0.3 NA. When local altimeter setting not received, use Pangborn Memorial altimeter setting: Increase all MDA 140 feet; increase Cats B/C visibility ¼ mile. Helicopter visibility reduction below 1 SM NA.</p>	<p>MISSED APPROACH: Climb to 2700 then climbing right turn to 5500 direct GEBTE and on track 175 to SELAH and hold.</p>
---	---

ASOS <b>118.375</b>	SEATTLE CENTER <b>132.6 269.35</b>	UNICOM <b>123.0 (CTAF) 0</b>
------------------------	---------------------------------------	---------------------------------



NW-1, 04 FEB 2016 to 03 MAR 2016

NW-1, 04 FEB 2016 to 03 MAR 2016

<p>7 NM Holding Pattern ZOBIM</p> <p>2700 5500 GEBTE tr 175° SELAH</p> <p>6600 ← 287° 107° 107° 5300 × 117° 3880 RW11</p> <p>4.2 NM 3.8 NM 3.3 NM</p>				
CATEGORY	A	B	C	D
CIRCLING	2660-1¼ 896 (900-1¼)	2660-2¾ 896 (900-2¾)	2660-3 896 (900-3)	2660-3 896 (900-3)

ELLENSBURG, WASHINGTON

Orig-A 17OCT13

47°02'N-120°32'W

**BOWERS FIELD (ELN)**  
**RNAV (GPS)-C**

REIL Rwy 29  
MIRL Rwy 11-29 0