

US DEPARTMENT of TRANSPORTATION - FEDERAL AVIATION ADMINISTRATION
STANDARD TERMINAL ARRIVAL (STAR)

Bearings, headings, courses, tracks and radials are magnetic. Elevations and altitudes are in feet. MSL. Altitudes are minimum altitudes unless otherwise indicated.
Distances are in nautical miles (NM). Graphic depiction attached.

Arrival Name	Number	STAR Computer Code	Superseded Number	Dated	Effective Date
MADEE RNAV	THREE	MADEE.MADEE3	TWO	02 MAY 2013	

TRANSITION ROUTES:

Transition Name	Transition Computer Codes	From FIX/NAVAID	To FIX/NAVAID	Mag Course	Distance	MEA	MOCA	MAA	Crossing Altitudes / Fixes
PAINE	PAE.MADEE3	PAE VOR/DME	PAE VOR/DME						
			EVRTT	333.03	07.00	10000	1900		AT/ABOVE 16000
			MADEE	333.02	19.00	6000	2100		

ARRIVAL ROUTE DESCRIPTION:

FROM MADEE ON TRACK 332.97/6.74 NM TO IWANY (MEA 6000/MOCA 2100). THENCE VIA . . .

LANDING BLI RWY 16: FROM IWANY ON TRACK 332.91/11.46 TO CROSS GERRD BETWEEN 6000 AND 7000 AND AT/BELOW 210 KTS (MEA 6000) THEN ON TRACK 306.52/11.38 TO CROSS UCAKI AT/ABOVE 4000 (MEA 4000) THEN ON TRACK 343.76/6.08 TO CROSS YAANO AT/ABOVE 2000 (MEA 2000) THEN ON HEADING 343.76. EXPECT RADAR VECTORS TO FINAL APPROACH COURSE AFTER YAANO.

LANDING BLI RWY 34: FROM IWANY ON TRACK 332.91/11.46 TO CROSS GERRD BETWEEN 6000 AND 7000 AND AT/BELOW 210 KTS (MEA 6000) THEN ON TRACK 306.52/11.38 TO CROSS UCAKI AT/ABOVE 4000 (MEA 4000) THEN ON TRACK 343.76/6.08 TO CROSS YAANO AT/ABOVE 2000 (MEA 2000) THEN ON HEADING 343.76. EXPECT RADAR VECTORS TO FINAL APPROACH COURSE AFTER IWANY.

PROCEDURAL DATA NOTES:

NOTE: RADAR REQUIRED.

NOTE: RNAV 1.

NOTE: DME/DME/IRU OR GPS REQUIRED.

NOTE: KBLI LANDING NORTH EXPECT RADAR VECTORS TO FINAL APPROACH COURSE AFTER IWANY. NOTE: KBLI LANDING SOUTH EXPECT RADAR VECTORS TO FINAL APPROACH COURSE AFTER YAANO. NOTE: LANDING CYXX: EXPECT RADAR VECTORS TO FINAL APPROACH COURSE AFTER YAANO. NOTE: LANDING CZBB: EXPECT RADAR VECTORS TO FINAL APPROACH COURSE AFTER UCAKI. NOTE: FOR NON-GPS EQUIPPED AIRCRAFT, CVV DME MUST BE OPERATIONAL.

FIXES AND/OR HOLDING PATTERNS:

CHART HOLDING AT HUH VORTAC (HOLD NW, RT, 149.00 INBOUND, 4 NM LEGS.) CHART TUBTY WP.

COMMUNICATIONS:

VICTORIA TERMINAL APP CON, WHIDBEY APP CON, KBLI TWR, KBLI ATIS, CYXX ATIS, CYXX TWR, CRANBROOK RADIO, CZBB ATIS 125.5, CZBB TWR 118.1.

AIRPORTS SERVED:

BELLINGHAM INTL, Bellingham, Wa
Abbotsford Airport, Abbotsford, BC
Boundary Bay Airport, Delta, BC

LOST COMMUNICATIONS PROCEDURE:

AFTER YAANO PROCEED DIRECT HUH AND HOLD.

REMARKS:

ADDITIONAL FLIGHT DATA:

DME/DME ASSESSMENT: SAT (RNP 2.0).

REFERENCE MAGNETIC VARIATION = KBLI 16E/2020.

US DEPARTMENT of TRANSPORTATION - FEDERAL AVIATION ADMINISTRATION
STANDARD TERMINAL ARRIVAL (STAR)

Bearings, headings, courses, tracks and radials are magnetic. Elevations and altitudes are in feet. MSL. Altitudes are minimum altitudes unless otherwise indicated.
Distances are in nautical miles (NM). Graphic depiction attached.

Arrival Name	Number	STAR Computer Code	Superseded Number	Dated	Effective Date
MADEE RNAV	THREE	MADEE.MADEE3	TWO	02 MAY 2013	

FLIGHT INSPECTED BY:

SCOTT A. THOMPSON

Name

FICO

Organization

Date

Digitally signed by

ALLAN WILL

Dec 22, 2015

Signature

DEVELOPED BY:

LEON FULNER, SUPPORT MANAGER FOR AIRSPACE AND
PROCEDURES, SEATTLE ARTCC

Name

Organization

Date

Digitally signed by

ALLAN WILL

Dec 22, 2015

Digitally signed by

ALLAN WILL

Dec 22, 2015

Signature

APPROVED BY:

LONNIE EVERHART, MANAGER

Name

AJV-5430

Organization

Date

CHANGES:

1. ALL MAGNETIC HEADINGS INCREASED FOUR DEGREES.
2. TRANSITION ROUTE EVRTT TO MADEE MOCA CHANGED FROM 2000 TO 2100.

REASONS:

1. MAGVAR UPDATE FROM 20E TO 16E.
2. REQUIRED REQUIRED OBSTACLE CLEARANCE.

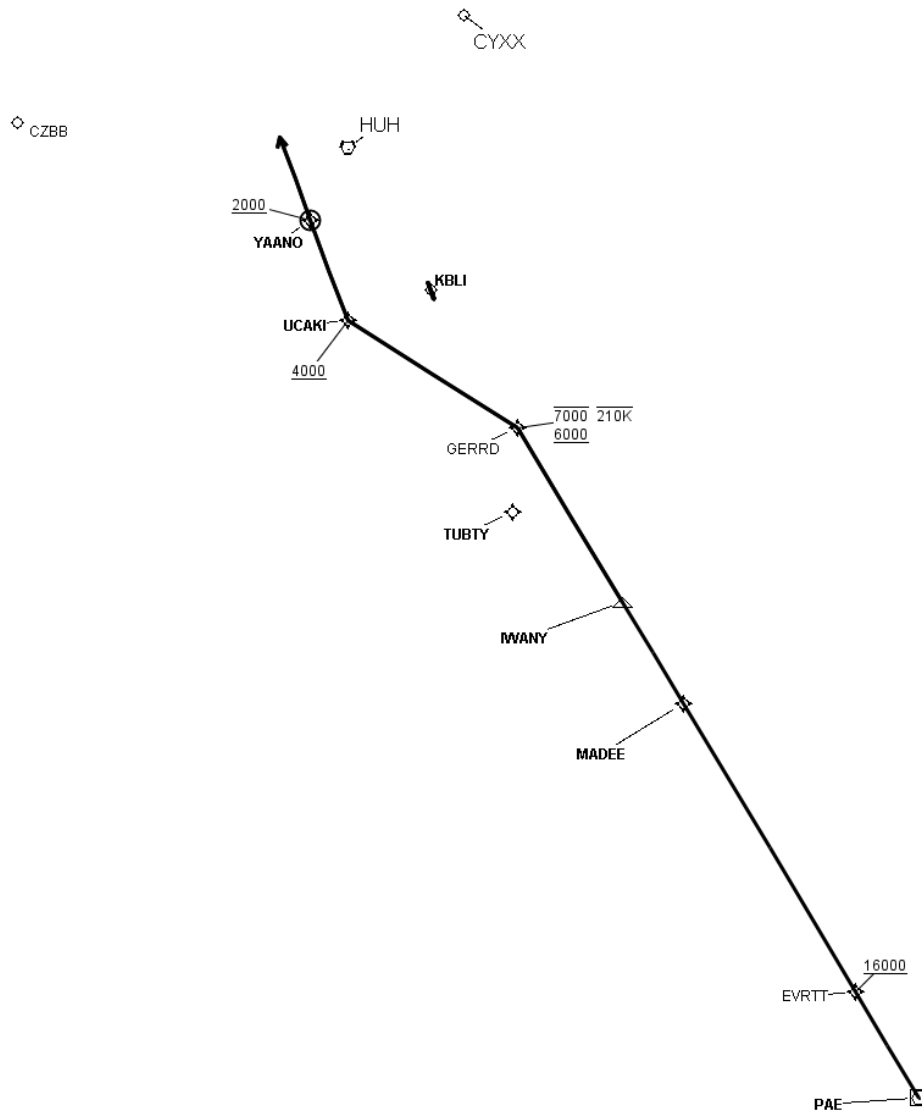
12/21/15: THIS IS A CORRECTED COPY OF THE FORM APPROVED ON 11/03/15.

1. CHANGED DIRECTION OF HOLDING AT HUH VIRTAC FROM "LT" TO "RT".

US DEPARTMENT of TRANSPORTATION - FEDERAL AVIATION ADMINISTRATION
STANDARD TERMINAL ARRIVAL (STAR)

Bearings, headings, courses, tracks and radials are magnetic. Elevations and altitudes are in feet. MSL. Altitudes are minimum altitudes unless otherwise indicated.
 Distances are in nautical miles (NM). Graphic depiction attached.

Arrival Name	Number	STAR Computer Code	Superseded Number	Dated	Effective Date
MADEE RNAV	THREE	MADEE.MADEE3	TWO	02 MAY 2013	
Graphic Depiction 1					



STAR (DATA RECORD)

Arrival Name	Number	STAR Computer Code	Superseded Number	Dated	Effective Date
MADEE RNAV	THREE	MADEE.MADEE3	TWO	02 MAY 2013	

FIX/NAVAID	LAT/LONG	C	FO/FB	LEG TYPE	TC	DIST (NM)	ALTITUDE	SPEED	REMARKS
En Route Transition									
PAE VOR/DME	475511.40N / 1221640.08W	Y		IF					PAE.MADEE3
EVRTT	480203.46N / 1221839.18W	Y	FB	TF	349.03	07.00	AT/ABOVE 16000		
MADEE	482041.70N / 1222404.81W	Y	FB	TF	349.02	19.00			
Common Route									
MADEE	482041.70N / 1222404.81W	Y		IF					MADEE.MADEE3
IWANY	482718.19N / 1222601.02W	Y	FB	TF	348.97	06.74			
Runway Transition									
IWANY	482718.19N / 1222601.02W	Y		IF					
GERRD	483832.56N / 1222920.45W	Y	FB	TF	348.91	11.46	6000B7000	AT/BELOW 210K	
UCAKI	484733.45N / 1223948.81W	Y	FB	TF	322.52	11.38	AT/ABOVE 4000		
YAANO	485337.70N / 1223951.13W	Y	FO	TF	359.76	06.08	AT/ABOVE 2000		
KBLL:RWY 16				VM	359.76				
Runway Transition									
IWANY	482718.19N / 1222601.02W	Y		IF					
GERRD	483832.56N / 1222920.45W	Y	FB	TF	348.91	11.46	6000B7000	AT/BELOW 210K	
UCAKI	484733.45N / 1223948.81W	Y	FB	TF	322.52	11.38	AT/ABOVE 4000		
YAANO	485337.70N / 1223951.13W	Y	FO	TF	359.76	06.08	AT/ABOVE 2000		
KBLL:RWY 34				VM	359.76				

