

<b>Flight Procedure Tracking Form</b>		<b>Action:</b> FLIGHT CHECK	<b>Task Type:</b> IAP	<b>Date Open:</b> 08/22/2014	<b>Task #:</b> 2014082234453301001	<b>Request #:</b> 20140822344533
<b>Procedure:</b> RNAV (GPS) RWY 1 AMDT 1			<b>Airport ID:</b> PAFM	<b>Airport:</b> AMBLER		<b>Reimbursable #:</b> NO
<b>City:</b> AMBLER	<b>ST:</b> AK	<b>GPS #:</b>	<b>Estimated Chart Date:</b> 11/10/2016		<b>FICO #:</b>	
<b>Fac ID:</b> NOCHANGE		<b>Fac. Type:</b>		<b>Specialist:</b> RONALD SALPINO		
<b>Procedure Review</b>						
	<b>Rec'd</b>	<b>Rel'd</b>	<b>Full Name</b>	<b>Comments</b>		
<b>Lead:</b>	05/16/2016					
<b>QA:</b>				8/23CTabaka		
<b>Liaison:</b>						
<b>Procedure Comments:</b>			<b>Remark Type:</b> INFORMATION			
<p>PENDING DATA USED FOR PAFM AIRPORT</p> <p>MAGVAR UPDATE; OLD 2000 E21, NEW 2020 E13</p> <p>CONTACT BEVERLY BORDY, AJV-5433 LEAD, 405-954-8293</p> <p>11/29/2016: THIS IS A CORRECTED COPY OF THE FORM APPROVED ON 10/31/2016. 1. REMOVED NOPT FROM TAA SECTOR 2 AND 3.</p>						

AMBLER, ALASKA

AL-6686 (FAA)

FIG

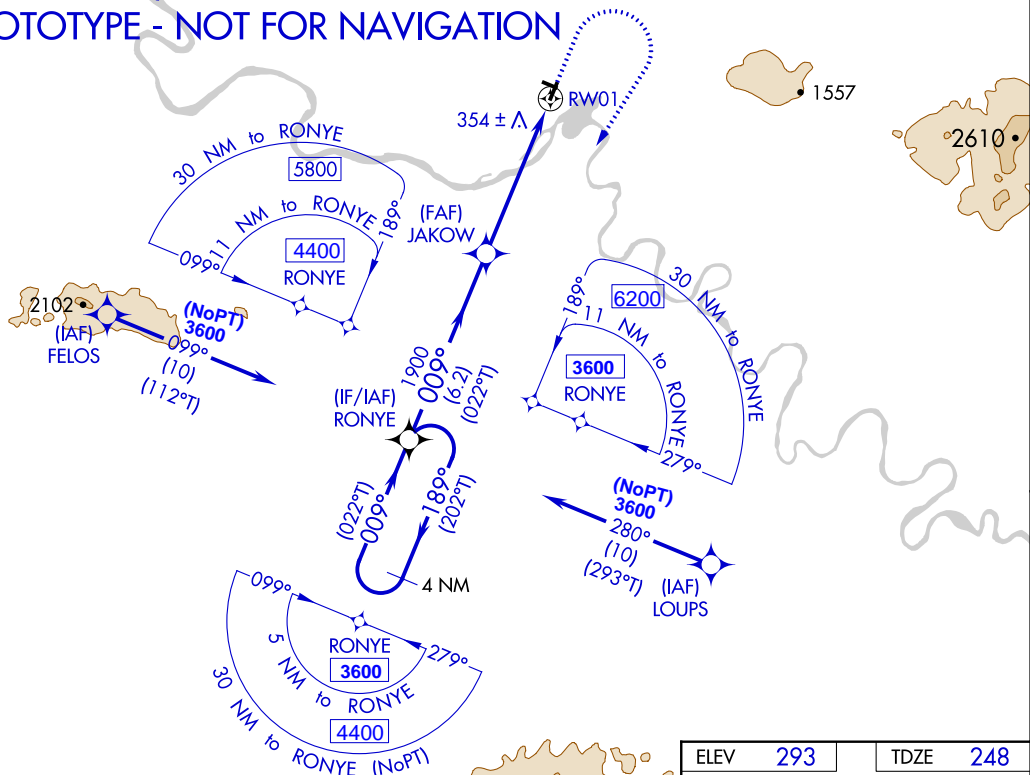
WAAS CH 40439 W01A	APP CRS 009°	Rwy Idg 4000 TDZE 248 Apt Elev 293
--------------------------	-----------------	---------------------------------------------------

# RNAV (GPS) RWY 1 AMBLER (AFM) (PAFM)

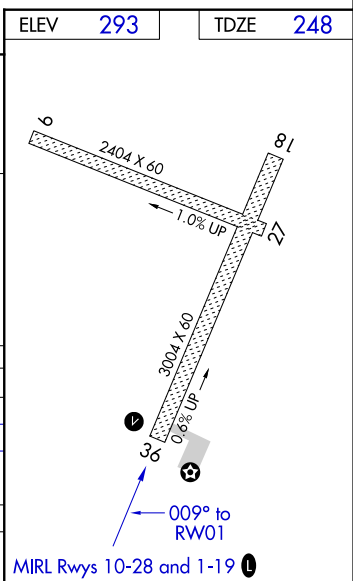
<p>For uncompensated Baro-VNAV systems, LNAV/VNAV NA below 20°C (-4°F) or above 42°C (108°F). Circling NA west of Rwy 1-19.</p> <p>DME/DME RNP-0.3 NA. *Missed approach requires minimum climb of 210 feet per NM to 2300.</p>	<p>MISSED APPROACH: Climb to 1000 then climbing right turn to 3600 direct RONYE and hold, continue climb-in-hold to 3600</p>
--------------------------------------------------------------------------------------------------------------------------------------------------------------------------------------------------------------------------------	------------------------------------------------------------------------------------------------------------------------------

AWOS-3 132.1	ANCHORAGE CENTER 119.2 263.0	KOTZEBUE RADIO 122.0	CTAF 122.7
-----------------	---------------------------------	-------------------------	---------------

## PROTOTYPE - NOT FOR NAVIGATION



4 NM Holding Pattern	VGSI and RNAV glidepath not coincident (VGSI Angle 3.00/TCH 25).	1000	3600	RONYE
3400	189°	009°	009°	009°
GP 3.00°	TCH 40	1900	1900	1900
6.2 NM	2.7 NM	2.3 NM	2.3 NM	2.3 NM
CATEGORY	A	B	C	D
LPV DA *	498-1	250 (300-1)		
LPV DA	666-1 3/8	418 (500-1 3/8)		
LNAV/VNAV DA	791-1 7/8	543 (600-1 7/8)		
LNAV MDA	1000-1 752 (800-1)	1000-1 1/4 752 (800-1 1/4)	1000-2 752 (800-2)	
CIRCLING	1000-1 707 (800-1)	1000-1 1/4 707 (800-1 1/4)	1000-2 707 (800-2)	1000-2 1/4 707 (800-2 1/4)



AUTOMATED AL-6686 RNAV (GPS) RWY 1  
AUTOMATED AL-6686 RNAV (GPS) RWY 1

AK  
JUNE 9, 2016  
COMPILER: LS  
REVIEWER:  
DBL CHKR:  
EFF DATE: FIG  
SECT: NOME

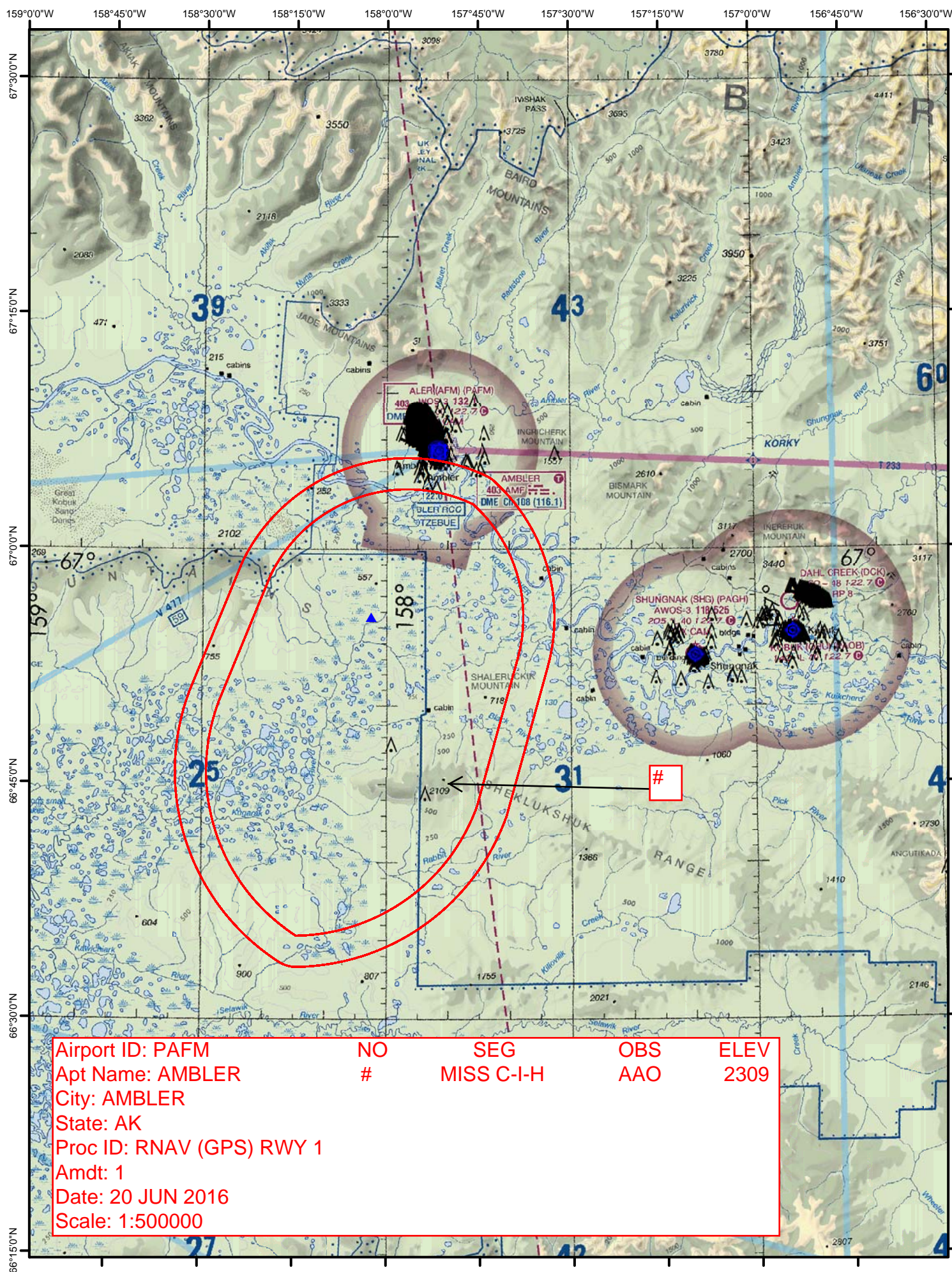
AMBLER, ALASKA

Amdt 1 FIG

67°06'N-157°51'W

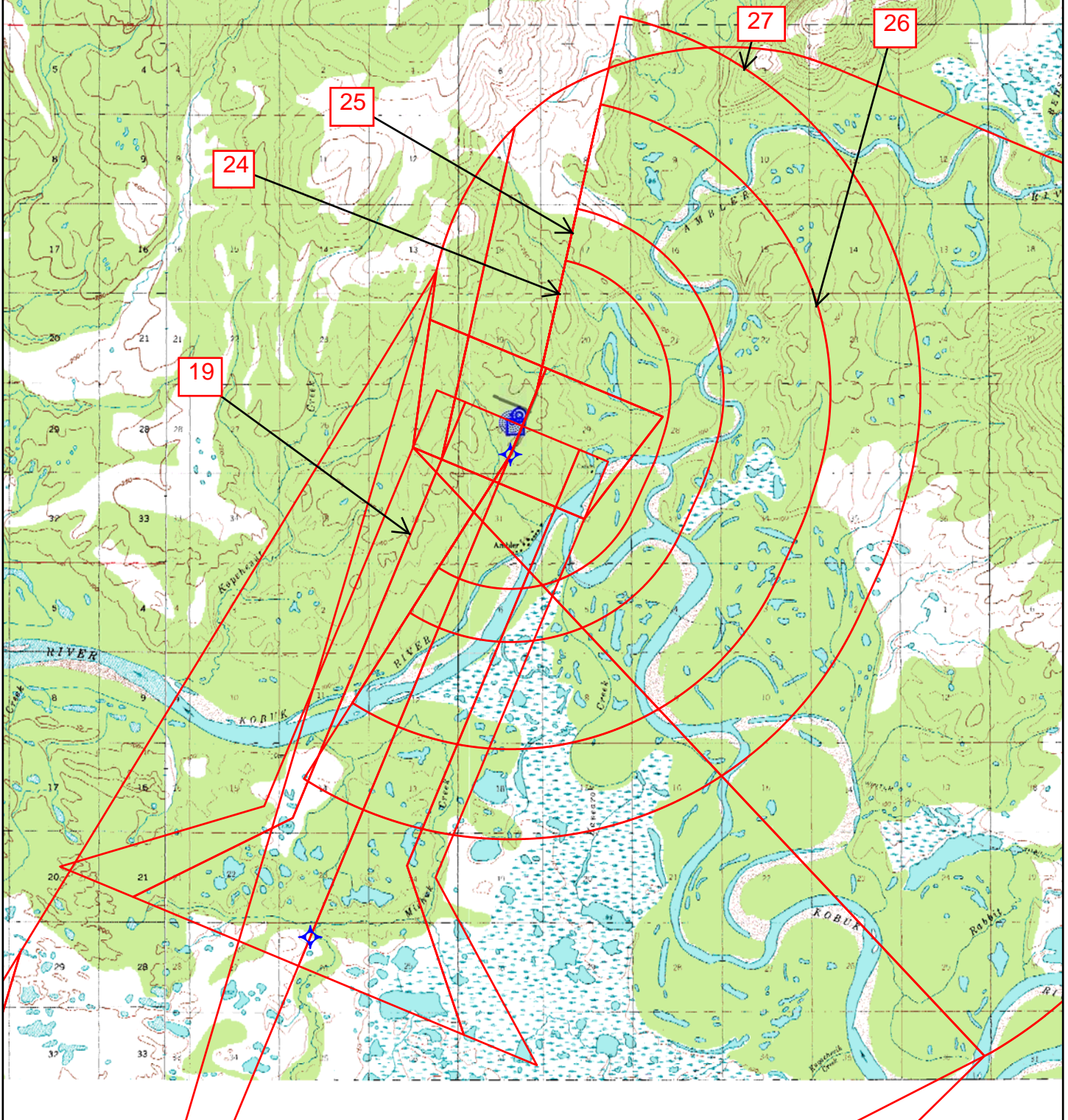
AMBLER (AFM) (PAFM)  
RNAV (GPS) RWY 1







Airport ID: PAFM	NO	SEG	OBS	ELEV
Apt Name: AMBLER	19	LNAV FNL	TREE	359
City: AMBLER	24	CAT A CIR	TREE	305
State: AK	25	CAT B CIR	TREE	359
Proc ID: RNAV (GPS) RWY 1	26	CAT C CIR	TREE	409
Amdt: 1	27	CAT D CIR	AAO	699
Date: 20 JUN 2016				
Scale: 1:100000				

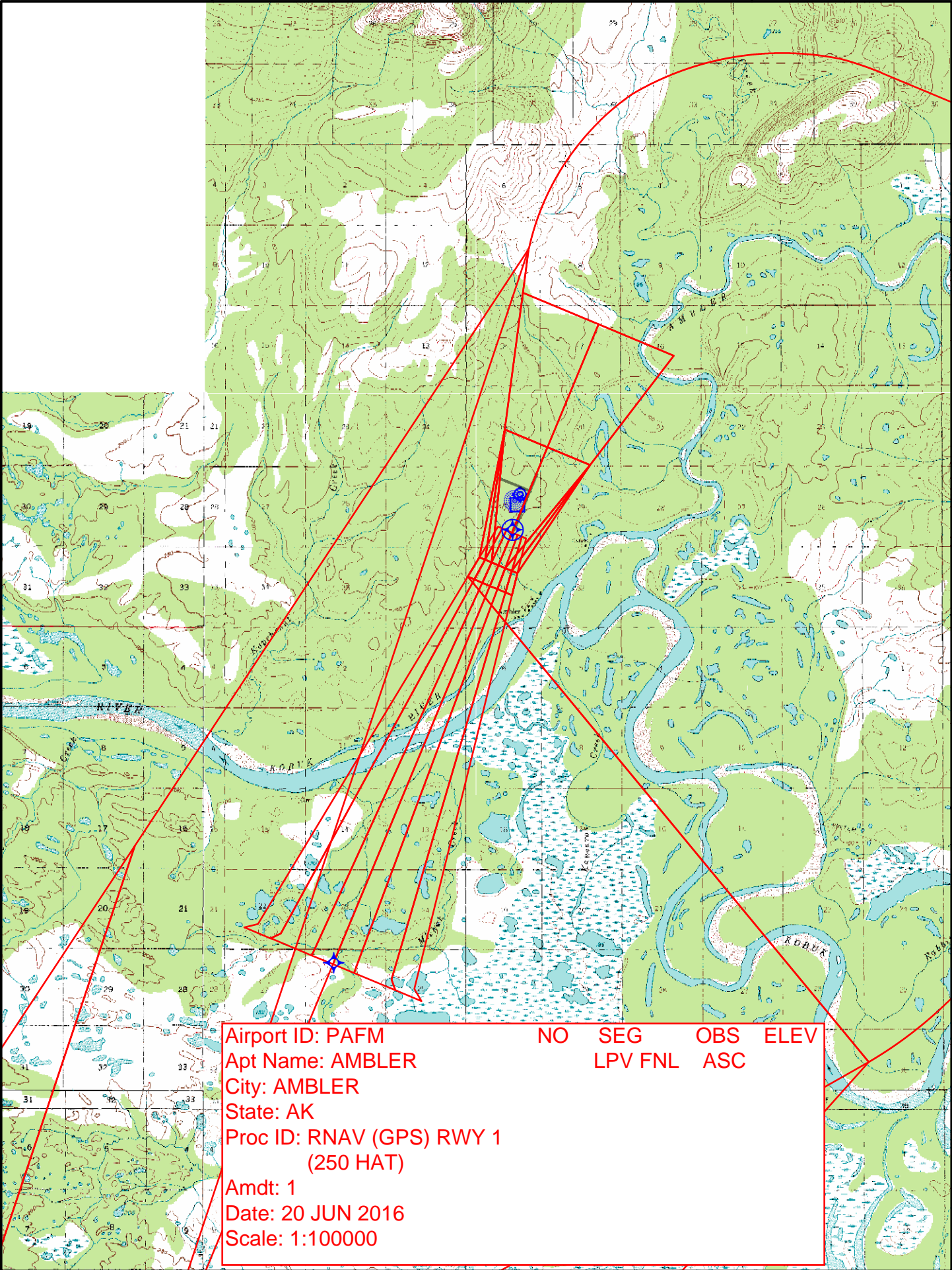




158°0'0"W

157°45'0"W

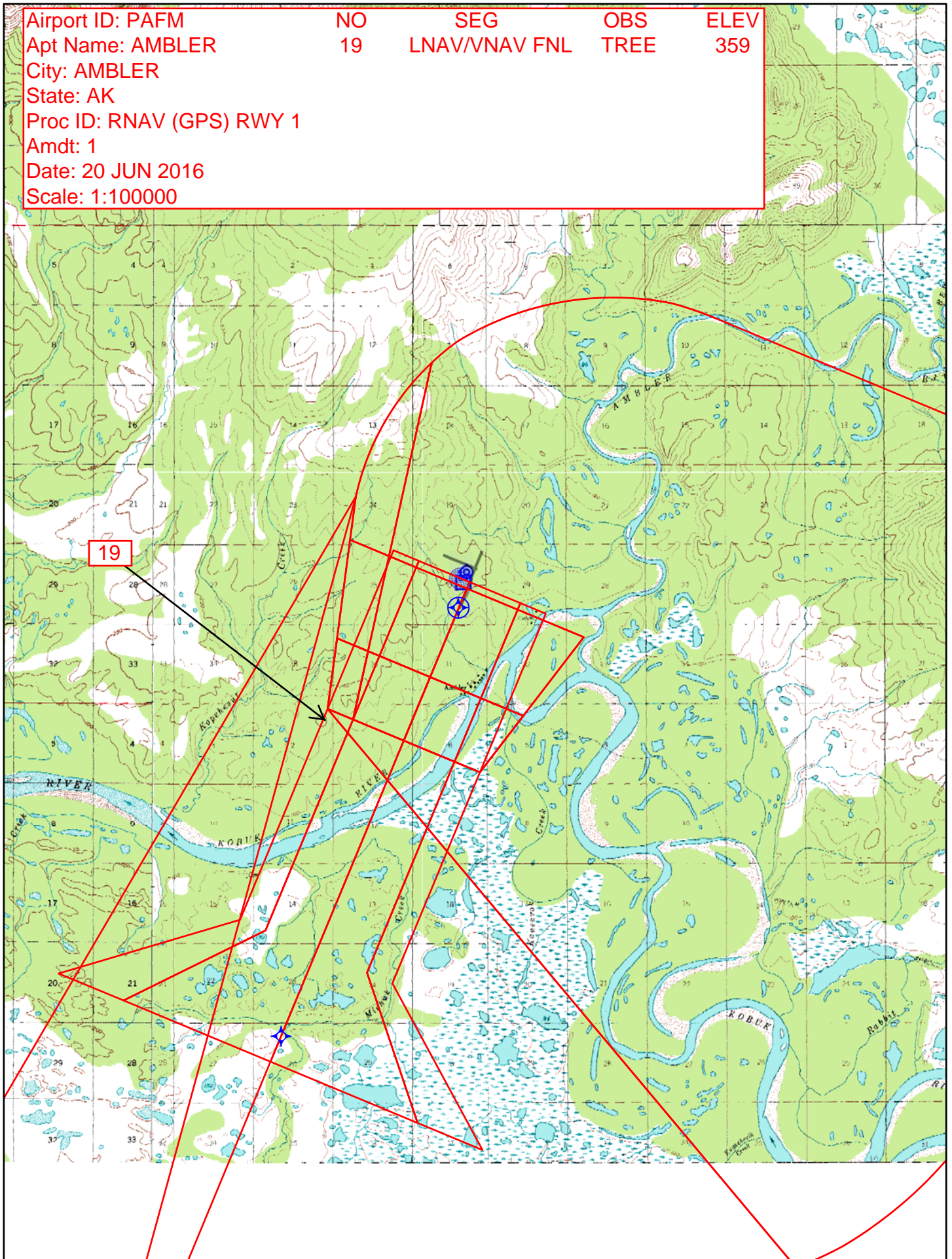
67°0'0"N



Airport ID: PAFM  
Apt Name: AMBLER  
City: AMBLER  
State: AK  
Proc ID: RNAV (GPS) RWY 1  
(250 HAT)  
Amdt: 1  
Date: 20 JUN 2016  
Scale: 1:100000

NO	SEG	OBS	ELEV
	LPV	FNL	ASC

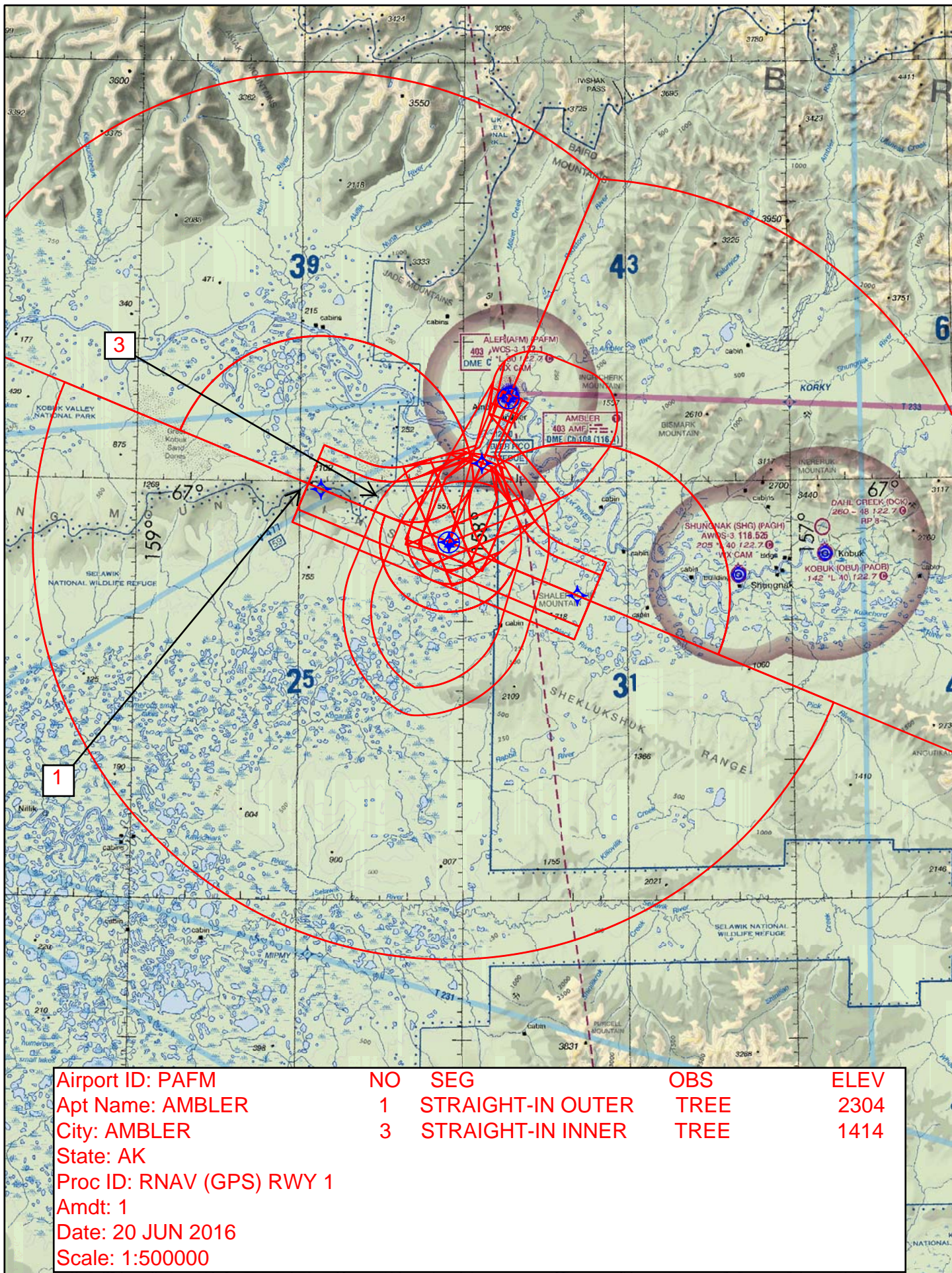
Airport ID: PAFM	NO	SEG	OBS	ELEV
Apt Name: AMBLER	19	LNAV/VNAV FNL	TREE	359
City: AMBLER				
State: AK				
Proc ID: RNAV (GPS) RWY 1				
Amdt: 1				
Date: 20 JUN 2016				
Scale: 1:100000				











Airport ID: PAFM

Apt Name: AMBLER

City: AMBLER

State: AK

Proc ID: RNAV (GPS) RWY 1

Amdt: 1

Date: 20 JUN 2016

Scale: 1:500000

NO SEG

1 STRAIGHT-IN OUTER

3 STRAIGHT-IN INNER

OBS

TREE

TREE

ELEV

2304

1414



Airport ID: PAFM

Apt Name: AMBLER

City: AMBLER

State: AK

Proc ID: RNAV (GPS) RWY 1

Amdt: 1

Date: 20 JUN 2016

Scale: 1:500000

NO

SEG

9 RIGHT BASE OUTER

11 RIGHT BASE INNER

OBS

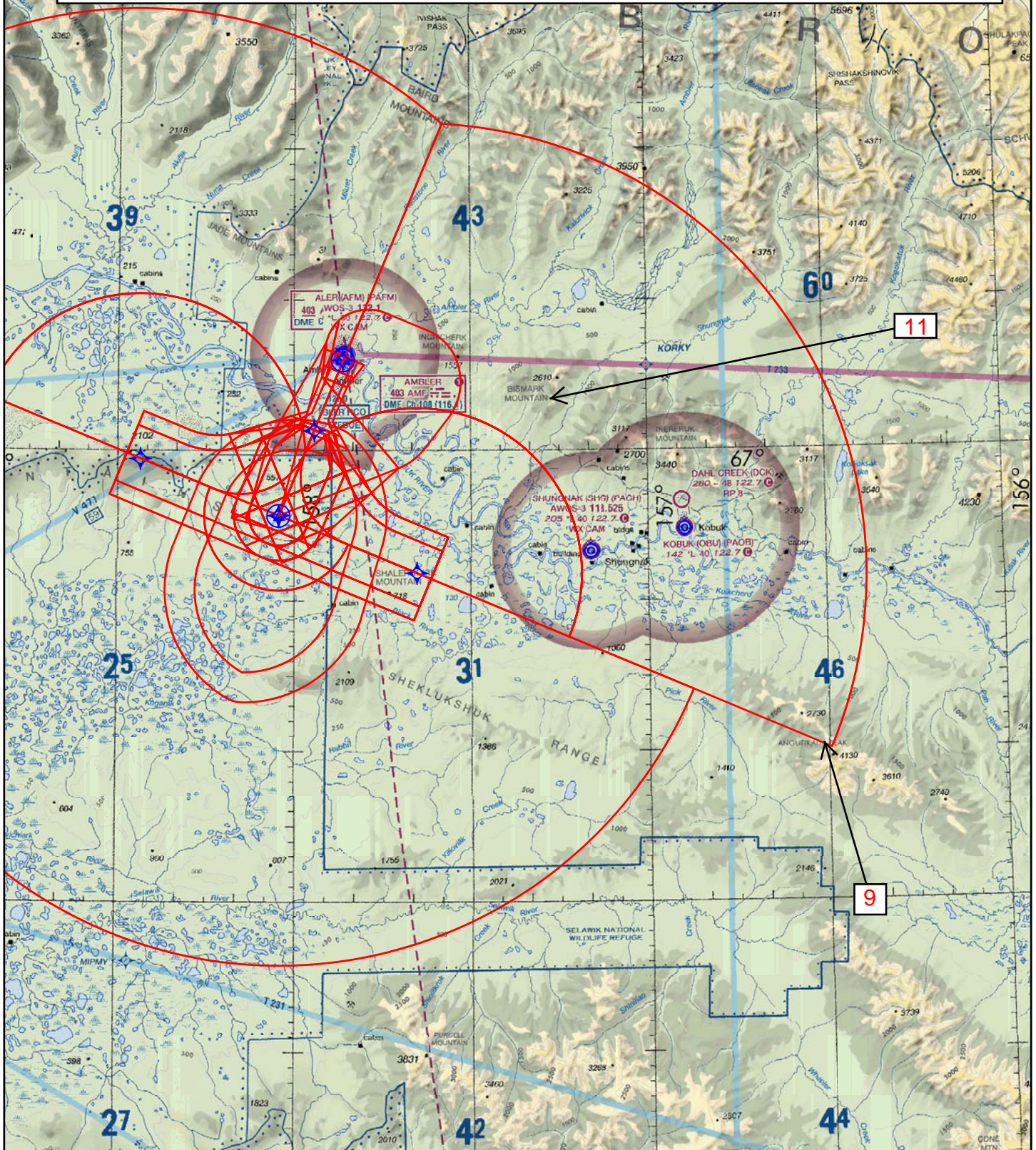
TREE

AAO

ELEV

4200

1017





Airport ID: PAFM  
Apt Name: AMBLER  
City: AMBLER

NO SEG  
5 LEFT BASE OUTER  
7 LEFT BASE INNER

OBS  
AAO  
AAO

ELEV  
3770  
2304

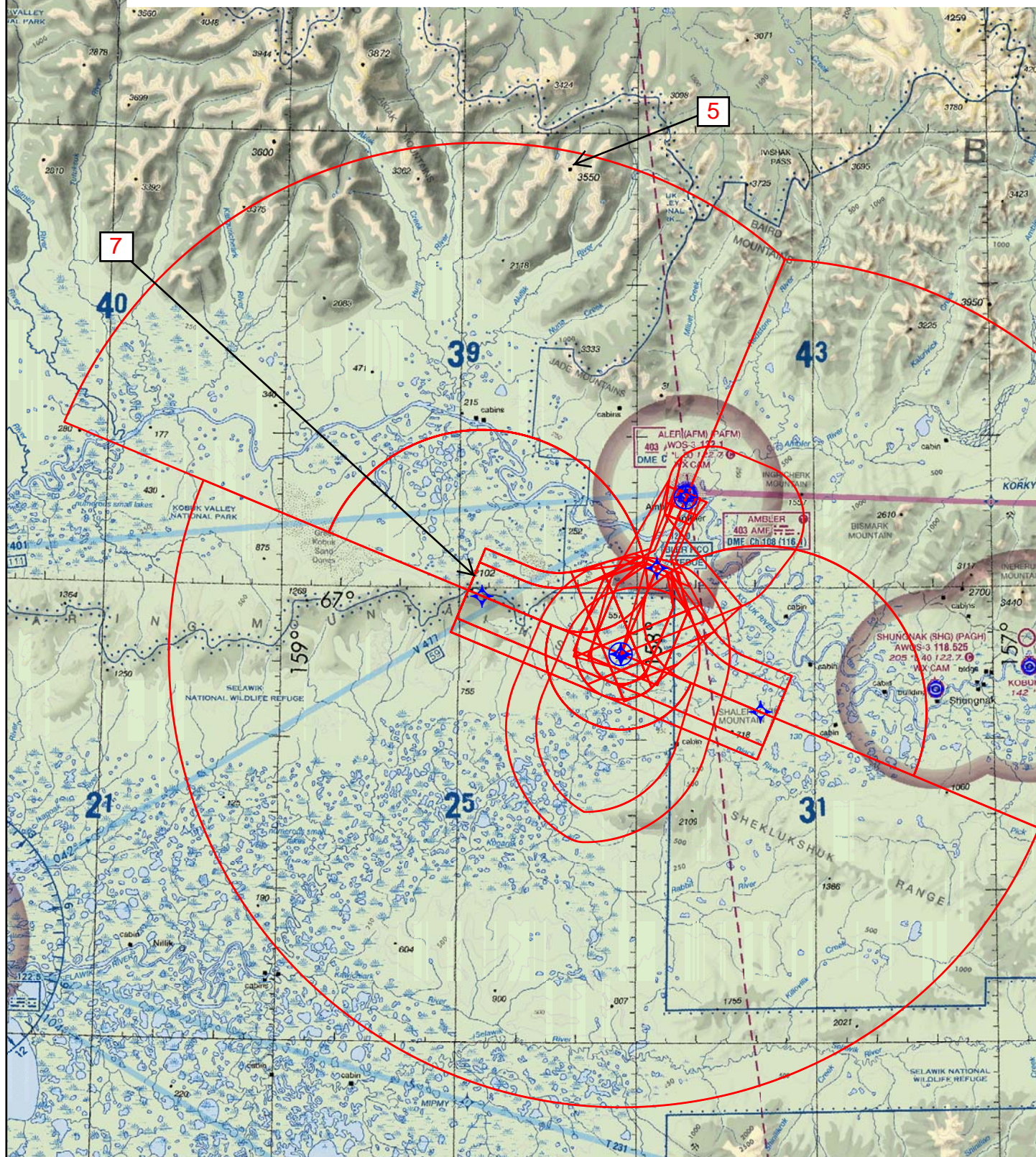
State: AK

Proc ID: RNAV (GPS) RWY 1

Amdt: 1

Date: 20 JUN 2016

Scale: 1:500000





# TERMINAL AIRSPACE DATA REQUIREMENTS

CITY: **AMBLER**

STATE: **AK**

AIRPORT NAME: **AMBLER**

ID: **PAFM**

PROCEDURE: **RNAV (GPS) RWY 1**

AMDT: **1**

DOCKET#: **NOT REQUIRED**  
(96-AXX-X/Required/Not Required)

**ALL DIST TO 1/100 NM; ELEV TO NEAREST FT; COORD TO 1/100 SEC; DEG TO 1/100 DG.**

- |                                                                            |                                 |                                |               |
|----------------------------------------------------------------------------|---------------------------------|--------------------------------|---------------|
| 1. Distance from                                                           | <u>THLD</u>                     | to 1000' point                 | <u>3.18</u>   |
| (Enter THLD, FAF, ARP, FACILITY, as appropriate)                           |                                 |                                |               |
| 2. Width of                                                                | <u>FINAL</u>                    | segment at 1000' point         | <u>1.20</u>   |
| (Enter appropriate segment, final, intermediate, etc.)                     |                                 |                                |               |
| 3. True Course of                                                          | <u>FINAL</u>                    | segment containing 1000' point | <u>022.49</u> |
| 4. High Terrain in                                                         | <u>FINAL</u>                    | segment containing 1000' point | <u>299</u>    |
| 5. Distance from                                                           | <u>THLD</u>                     | to 1500' point                 | <u>4.86</u>   |
| (If 1500' point in PT maneuvering area or holding pattern note in remarks) |                                 |                                |               |
| 6. Width of                                                                | <u>FINAL</u>                    | segment at 1500' point         | <u>2.00</u>   |
| 7. True Course of                                                          | <u>FINAL</u>                    | segment containing 1500' point | <u>022.49</u> |
| 8. High Terrain in                                                         | <u>FINAL</u>                    | segment containing 1500' point | <u>299</u>    |
| 9. Threshold Coordinates (if straight-in) ...                              | <u>670559.84N / 1575138.48W</u> |                                |               |
| 10. ARP Coordinates .....                                                  | <u>670623.10N / 1575127.00W</u> |                                |               |
| 11. Runway Approach End and distance furthest from ARP .....               | RWY                             | <u>1</u>                       |               |
|                                                                            | Distance                        | <u>0.40</u>                    | NM            |
| 12. FAF Coordinates .....                                                  | <u>670120.39N / 1575635.64W</u> |                                |               |

**REMARKS: Approach/Drawing attached.**

TAA: FELOS (IAF) 665926.14N-1582607.36W; LOUPS (IAF) 665150.51N-1573909.44W

RONYE (IF/IAF) 665540.06N-1580234.75W RADIUS: 30 NM