

US DEPARTMENT of TRANSPORTATION - FEDERAL AVIATION ADMINISTRATION  
**STANDARD TERMINAL ARRIVAL (STAR)**

Bearings, headings, courses, tracks and radials are magnetic. Elevations and altitudes are in feet. MSL. Altitudes are minimum altitudes unless otherwise indicated.  
 Distances are in nautical miles (NM). Graphic depiction attached.

Arrival Name <b>MADII RNAV</b>	Number <b>THREE</b>	STAR Computer Code <b>MADII.MADII3</b>	Superseded Number <b>TWO</b>	Dated <b>15 OCT 2015</b>	Effective Date
-----------------------------------	------------------------	---	---------------------------------	-----------------------------	----------------

TRANSITION ROUTES:

Transition Name	Transition Computer Codes	From FIX/NAVAID	To FIX/NAVAID	Mag Course	Distance	MEA	MOCA	MAA	Crossing Altitudes / Fixes
CHDRR	CHDRR.MADII3	CHDRR	CHDRR						AT 14000
			ZANDI	211.15	34.52	6000	2600		
			HOPSS	196.18	07.58	6000	2500		
			HUNKA	184.75	10.37	6000	2200		
			MADII	187.90	13.94	6000	2300		
FALLS	FAH.MADII3	FAH VOR/DME	FAH VOR/DME						
			KOHL	180.65	07.85	9000	2200		BETWEEN FL180 AND FL210
			GURNN	178.38	07.87	6000	2200		AT/BELOW FL180
			CHDRR	193.92	10.44	6000	2100		AT 14000
			ZANDI	211.15	34.52	6000	2600		
			HOPSS	196.18	07.58	6000	2500		
			HUNKA	184.75	10.37	6000	2200		
			MADII	187.90	13.94	6000	2300		
FGHRN	FGHRN.MADII3	FGHRN	FGHRN						
			FAH VOR/DME	188.74	20.10	9000	2300		
			KOHL	180.65	07.85	9000	2200		BETWEEN FL180 AND FL210
			GURNN	178.38	07.87	6000	2200		AT/BELOW FL180
			CHDRR	193.92	10.44	6000	2100		AT 14000
			ZANDI	211.15	34.52	6000	2600		
			HOPSS	196.18	07.58	6000	2500		
			HUNKA	184.75	10.37	6000	2200		
			MADII	187.90	13.94	6000	2300		
FOLGO	FOLGO.MADII3	FOLGO	FOLGO						
			FGHRN	189.27	45.40	16000	2400		
			FAH VOR/DME	188.74	20.10	9000	2300		
			KOHL	180.65	07.85	9000	2200		BETWEEN FL180 AND FL210
			GURNN	178.38	07.87	6000	2200		AT/BELOW FL180
			CHDRR	193.92	10.44	6000	2100		AT 14000

QUALITY  
2  
CHECKED

US DEPARTMENT of TRANSPORTATION - FEDERAL AVIATION ADMINISTRATION  
**STANDARD TERMINAL ARRIVAL (STAR)**

Bearings, headings, courses, tracks and radials are magnetic. Elevations and altitudes are in feet. MSL. Altitudes are minimum altitudes unless otherwise indicated.  
 Distances are in nautical miles (NM). Graphic depiction attached.

Arrival Name MADII RNAV		Number THREE		STAR Computer Code MADII.MADII3		Superseded Number TWO			Dated 15 OCT 2015	Effective Date
Transition Name	Transition Computer Codes	From FIX/NAVAID	To FIX/NAVAID	Mag Course	Distance	MEA	MOCA	MAA	Crossing Altitudes / Fixes	
			ZANDI	211.15	34.52	6000	2600			
			HOPSS	196.18	07.58	6000	2500			
			HUNKA	184.75	10.37	6000	2200			
			MADII	187.90	13.94	6000	2300			
GREEN BAY	GRB.MADII3	GRB VORTAC	GRB VORTAC							
			FGHRN	150.99	32.00	16000	3100			
			FAH VOR/DME	188.74	20.10	9000	2300			
			KOHL	180.65	07.85	9000	2200			BETWEEN FL180 AND FL210
			GURNN	178.38	07.87	6000	2200			AT/BELOW FL180
			CHDRR	193.92	10.44	6000	2100			AT 14000
			ZANDI	211.15	34.52	6000	2600			
			HOPSS	196.18	07.58	6000	2500			
			HUNKA	184.75	10.37	6000	2200			
			MADII	187.90	13.94	6000	2300			
KOHL	KOHL.MADII3	KOHL	KOHL							BETWEEN FL180 AND FL210
			GURNN	178.38	07.87	6000	2200			AT/BELOW FL180
			CHDRR	193.92	10.44	6000	2100			AT 14000
			ZANDI	211.15	34.52	6000	2600			
			HOPSS	196.18	07.58	6000	2500			
			HUNKA	184.75	10.37	6000	2200			
			MADII	187.90	13.94	6000	2300			
LGHRN	LGHRN.MADII3	LGHRN	LGHRN							
			FGHRN	253.17	31.04	16000	2300			
			FAH VOR/DME	188.74	20.10	9000	2300			
			KOHL	180.65	07.85	9000	2200			BETWEEN FL180 AND FL210
			GURNN	178.38	07.87	6000	2200			AT/BELOW FL180
			CHDRR	193.92	10.44	6000	2100			AT 14000
			ZANDI	211.15	34.52	6000	2600			
			HOPSS	196.18	07.58	6000	2500			

QUALITY  
2  
CHECKED

US DEPARTMENT of TRANSPORTATION - FEDERAL AVIATION ADMINISTRATION  
**STANDARD TERMINAL ARRIVAL (STAR)**

Bearings, headings, courses, tracks and radials are magnetic. Elevations and altitudes are in feet. MSL. Altitudes are minimum altitudes unless otherwise indicated.  
Distances are in nautical miles (NM). Graphic depiction attached.

Arrival Name			Number	STAR Computer Code	Superseded Number			Dated	Effective Date
MADII RNAV			THREE	MADII.MADII3	TWO			15 OCT 2015	
Transition Name	Transition Computer Codes	From FIX/NAVAID	To FIX/NAVAID	Mag Course	Distance	MEA	MOCA	MAA	Crossing Altitudes / Fixes
			HUNKA	184.75	10.37	6000	2200		
			MADII	187.90	13.94	6000	2300		
ZANDI	ZANDI.MADII3	ZANDI	ZANDI						
			HOPSS	196.18	07.58	6000	2500		
			HUNKA	184.75	10.37	6000	2200		
			MADII	187.90	13.94	6000	2300		

ARRIVAL ROUTE DESCRIPTION:

FROM MADII ON TRACK 133.22/9.70 TO SOOLU (MEA 6000/MOCA 2500).

LANDING RWY 10L/C/R, 09R/L, 22R/L, 04R/L, 27R/L, 15: FROM SOOLU ON TRACK 142.34/8.26 TO KURKK (MEA 4000/MOCA 2300), THEN ON TRACK 092.95/10.41 TO VULCN (MEA 4000/MOCA 2200), THEN ON TRACK 093.09/12.75 TO HIMGO (MEA 4000/MOCA 2000), THEN ON TRACK 093.09. EXPECT RADAR VECTORS TO FINAL APPROACH COURSE.

LANDING RWY 28L/C/R: FROM SOOLU ON TRACK 162.12/20.01 TO JORJO (MEA 4000/MOCA 2500), THEN ON TRACK 093.00/8.37 TO MONKZ (MEA 4000/MOCA 2200), THEN ON TRACK 093.05/13.94 TO TONIE (MEA 4000/MOCA 3400), THEN ON TRACK 093.05. EXPECT RADAR VECTORS TO FINAL APPROACH COURSE.

PROCEDURAL DATA NOTES:

NOTE: RADAR REQUIRED.

NOTE: RNAV 1.

NOTE: DME/DME/IRU OR GPS REQUIRED.

NOTE: ZANDI ENROUTE TRANSITION: FOR MILWAUKEE TERMINAL AREA DEPARTURES ONLY.

FIXES AND/OR HOLDING PATTERNS:

CHART RALFE AS A STAND-ALONE WAYPOINT.

CHART HOLDING AT CHDRR: HOLD NW, LT, 150.00 INBOUND, 10 NM LEGS.

CHART HOLDING AT ZANDI: HOLD N, LT, 196.18 INBOUND, 10 NM LEGS.

CHART HOLDING AT HUNKA: HOLD N, RT, 184.75 INBOUND, 10 NM LEGS.

CHART HOLDING AT GRB VORTAC: HOLD NW, RT, 150.99 INBOUND, 10 NM LEGS.

CHART HOLDING AT FAH VOR/DME: HOLD W, RT, 090.00 INBOUND, 10 NM LEGS.

COMMUNICATIONS:

ORD ATIS, CHICAGO APP CON

AIRPORTS SERVED:

CHICAGO O'HARE INTL , CHICAGO, IL

LOST COMMUNICATIONS PROCEDURE:

REMARKS:

QUALITY  
2  
CHECKED

US DEPARTMENT of TRANSPORTATION - FEDERAL AVIATION ADMINISTRATION  
**STANDARD TERMINAL ARRIVAL (STAR)**

Bearings, headings, courses, tracks and radials are magnetic. Elevations and altitudes are in feet. MSL. Altitudes are minimum altitudes unless otherwise indicated.  
Distances are in nautical miles (NM). Graphic depiction attached.

Arrival Name	Number	STAR Computer Code	Superseded Number	Dated	Effective Date
<b>MADII RNAV</b>	<b>THREE</b>	<b>MADII.MADII3</b>	<b>TWO</b>	<b>15 OCT 2015</b>	

ADDITIONAL FLIGHT DATA:

DME/DME ASSESSMENT: SAT (RNP 2.0).  
REFERENCE MAG VAR: KORD 3W/2010.

FLIGHT INSPECTED BY:

Name	Organization	Date	Signature
------	--------------	------	-----------

DEVELOPED BY:

THOMAS RUCKER, MANAGER, AIRSPACE AND  
PROCEDURES OFFICE

CHICAGO ARTCC

2 Feb 2016

For

*Digitally signed by  
Patrick Mulqueen*

Name	Organization	Date	Signature
------	--------------	------	-----------

APPROVED BY:

PATRICK MULQUEEN, MANAGER

AJV-5442

2 Feb 2016

*Digitally signed by  
Patrick Mulqueen*

Name	Organization	Date	Signature
------	--------------	------	-----------

CHANGES:

CHANGED RWY 14R TO RWY 15

REASONS:

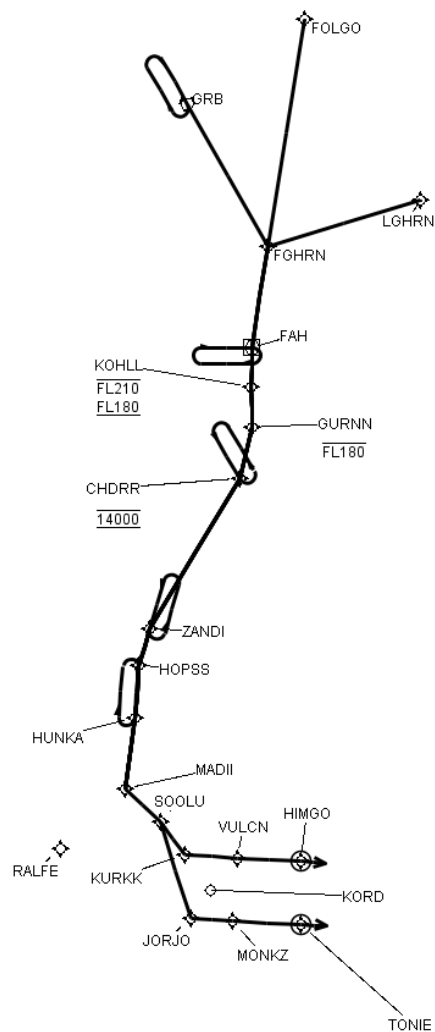
RUNWAY BEING RENUMBERED.

QUALITY  
2  
CHECKED

US DEPARTMENT of TRANSPORTATION - FEDERAL AVIATION ADMINISTRATION  
**STANDARD TERMINAL ARRIVAL (STAR)**

Bearings, headings, courses, tracks and radials are magnetic. Elevations and altitudes are in feet. MSL. Altitudes are minimum altitudes unless otherwise indicated.  
 Distances are in nautical miles (NM). Graphic depiction attached.

Arrival Name	Number	STAR Computer Code	Superseded Number	Dated	Effective Date
<b>MADII RNAV</b>	<b>THREE</b>	<b>MADII.MADII3</b>	<b>TWO</b>	<b>15 OCT 2015</b>	
<b>Graphic Depiction 1</b>					



CRL

QUALITY  
2  
CHECKED



US DEPARTMENT of TRANSPORTATION - FEDERAL AVIATION ADMINISTRATION  
**STANDARD TERMINAL ARRIVAL (STAR)**

Bearings, headings, courses, tracks and radials are magnetic. Elevations and altitudes are in feet. MSL. Altitudes are minimum altitudes unless otherwise indicated.  
 Distances are in nautical miles (NM). Graphic depiction attached.

Arrival Name	Number	STAR Computer Code	Superseded Number	Dated	Effective Date
MADII RNAV	THREE	MADII.MADI3	TWO	15 OCT 2015	
Graphic Depiction 2					

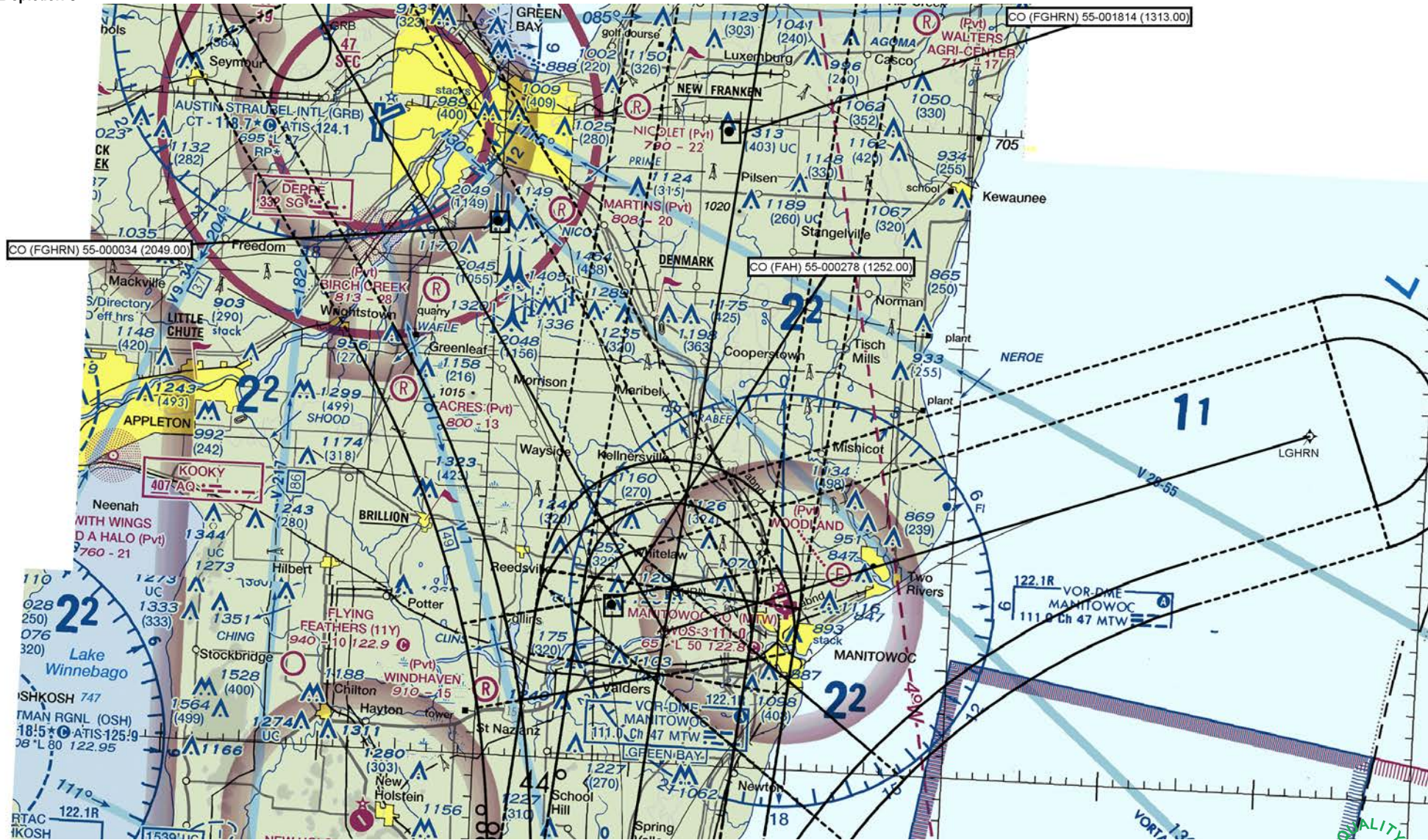




US DEPARTMENT of TRANSPORTATION - FEDERAL AVIATION ADMINISTRATION  
**STANDARD TERMINAL ARRIVAL (STAR)**

Bearings, headings, courses, tracks and radials are magnetic. Elevations and altitudes are in feet. MSL. Altitudes are minimum altitudes unless otherwise indicated.  
Distances are in nautical miles (NM). Graphic depiction attached.

Arrival Name	Number	STAR Computer Code	Superseded Number	Dated	Effective Date
MADII RNAV	THREE	MADII.MADI3	TWO	15 OCT 2015	
Graphic Depiction 3					





## STANDARD TERMINAL ARRIVAL (STAR)

Distances are in nautical miles (NM). Graphic depiction attached.

Arrival Name

## MADII RNAV

Number

### THREE

STAR Computer Code

**MADII.MADII3**

Superseded Number

## TWO

Dated

15 OCT 2015

Effective Date

### Graphic Depiction 4



FAA Form 7100-4 / April 2012 / Generated by: TARGETS: 5.0.4.1; WGS84: 1.1.15 (01/05/15); Common RS: 1.4.0 (01/26/15); RNAV STAR RS: 1.5.2 (05/21/15)

Page 8 of 11

QUALITY  
2  
CHECKED

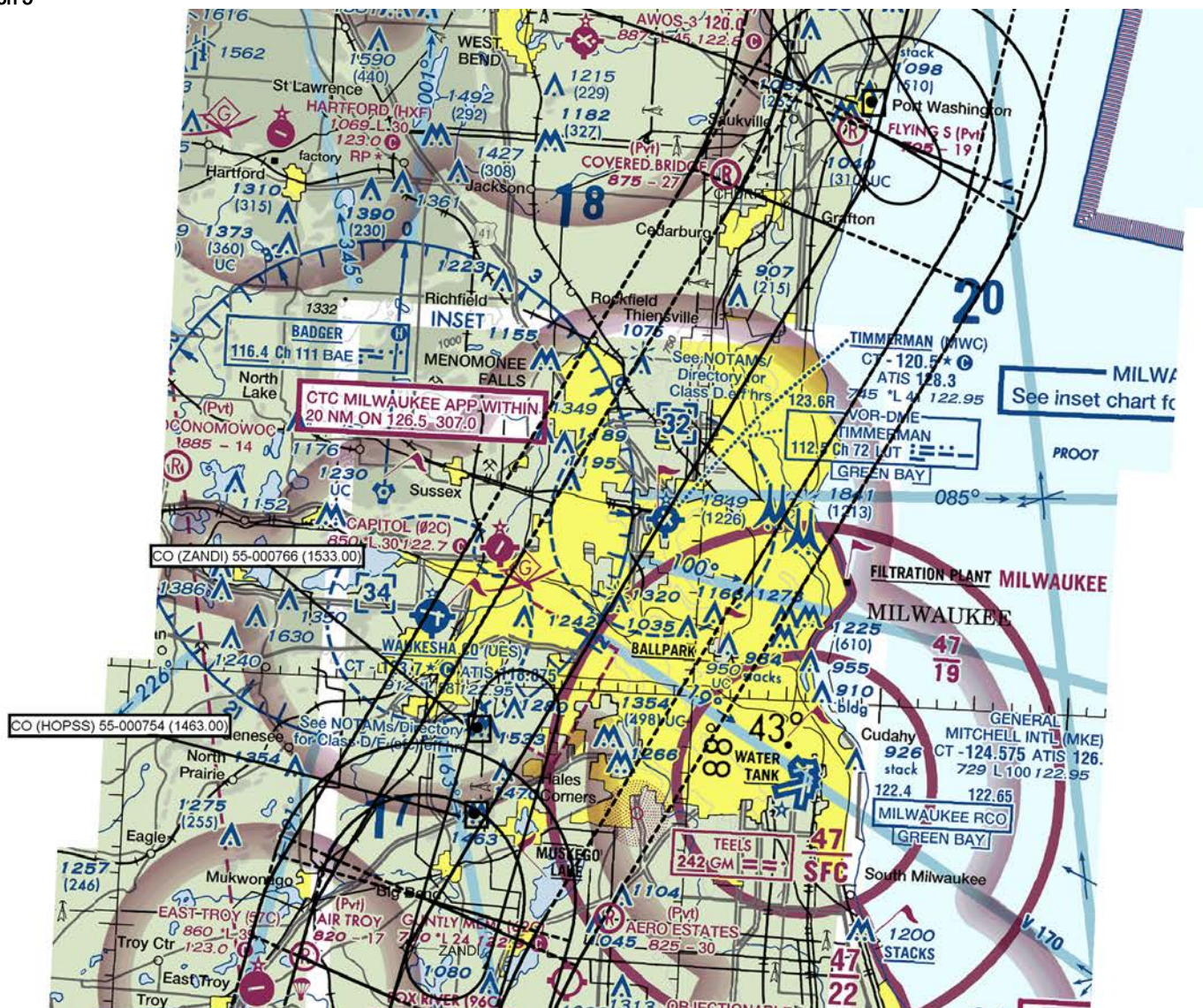


## STANDARD TERMINAL ARRIVAL (STAR)

Distances are in nautical miles (NM). Graphic depiction attached.

Arrival Name	Number	STAR Computer Code	Superseded Number	Dated	Effective Date
MADII RNAV	THREE	MADII.MADII3	TWO	15 OCT 2015	

**Graphic Depiction 5**



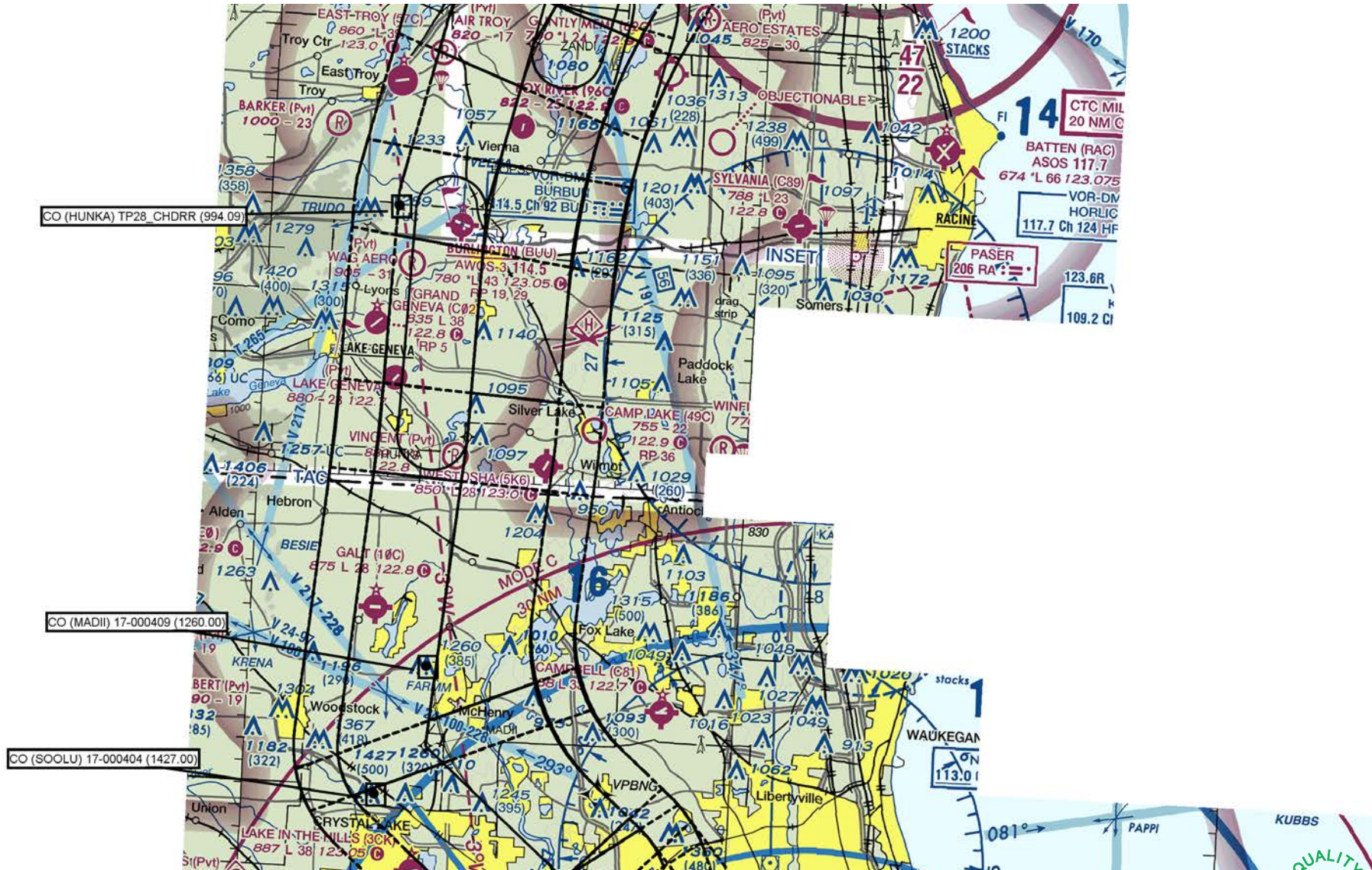
QUALITY  
2  
CHECKED



US DEPARTMENT of TRANSPORTATION - FEDERAL AVIATION ADMINISTRATION  
**STANDARD TERMINAL ARRIVAL (STAR)**

Bearings, headings, courses, tracks and radials are magnetic. Elevations and altitudes are in feet. MSL. Altitudes are minimum altitudes unless otherwise indicated.  
Distances are in nautical miles (NM). Graphic depiction attached.

Arrival Name	Number	STAR Computer Code	Superseded Number	Dated	Effective Date
MADII RNAV	THREE	MADII.MADI3	TWO	15 OCT 2015	
Graphic Depiction 6					





US DEPARTMENT of TRANSPORTATION - FEDERAL AVIATION ADMINISTRATION  
**STANDARD TERMINAL ARRIVAL (STAR)**

Bearings, headings, courses, tracks and radials are magnetic. Elevations and altitudes are in feet. MSL. Altitudes are minimum altitudes unless otherwise indicated.

Distances are in nautical miles (NM). Graphic depiction attached.

Arrival Name	Number	STAR Computer Code	Superseded Number	Dated	Effective Date
<b>MADII RNAV</b>	<b>THREE</b>	<b>MADII.MADII3</b>	<b>TWO</b>	<b>15 OCT 2015</b>	

### Graphic Depiction 7



QUALITY  
2  
CHECKED



## STAR (DATA RECORD)

Arrival Name MADII RNAV		Number THREE		STAR Computer Code MADII.MADII3		Superseded Number TWO		Dated 15 OCT 2015	Effective Date
FIX/NAVAID	LAT/LONG	C	FO/FB	LEG TYPE	TC	DIST (NM)	ALTITUDE	SPEED	REMARKS
En Route Transition									
CHDRR	432010.89N / 0875219.44W	Y		IF			AT 14000		CHDRR.MADII3
ZANDI	424942.03N / 0881427.17W	Y	FB	TF	208.15	34.52			
HOPSS	424219.25N / 0881647.79W	Y	FB	TF	193.18	07.58			
HUNKA	423157.23N / 0881713.51W	Y	FB	TF	181.75	10.37			
MADII	421803.47N / 0881849.73W	Y	FB	TF	184.90	13.94			
En Route Transition									
FAH VOR/DME	434607.63N / 0875055.57W	Y		IF					FAH.MADII3
KOHL	433816.97N / 0875029.01W	Y	FB	TF	177.65	07.85	FL180BFL210		
GURNN	433026.14N / 0874936.77W	Y	FB	TF	175.38	07.87	AT/BELOW FL180		
CHDRR	432010.89N / 0875219.44W	Y	FB	TF	190.92	10.44	AT 14000		
ZANDI	424942.03N / 0881427.17W	Y	FB	TF	208.15	34.52			
HOPSS	424219.25N / 0881647.79W	Y	FB	TF	193.18	07.58			
HUNKA	423157.23N / 0881713.51W	Y	FB	TF	181.75	10.37			
MADII	421803.47N / 0881849.73W	Y	FB	TF	184.90	13.94			
En Route Transition									
FGHRN	440608.00N / 0874809.00W	Y		IF					FGHRN.MADII3
FAH VOR/DME	434607.63N / 0875055.57W	Y	FB	TF	185.74	20.10			
KOHL	433816.97N / 0875029.01W	Y	FB	TF	177.65	07.85	FL180BFL210		
GURNN	433026.14N / 0874936.77W	Y	FB	TF	175.38	07.87	AT/BELOW FL180		
CHDRR	432010.89N / 0875219.44W	Y	FB	TF	190.92	10.44	AT 14000		
ZANDI	424942.03N / 0881427.17W	Y	FB	TF	208.15	34.52			
HOPSS	424219.25N / 0881647.79W	Y	FB	TF	193.18	07.58			
HUNKA	423157.23N / 0881713.51W	Y	FB	TF	181.75	10.37			
MADII	421803.47N / 0881849.73W	Y	FB	TF	184.90	13.94			
En Route Transition									
FOLGO	445115.84N / 0874116.27W	Y		IF					FOLGO.MADII3

QUALITY  
2  
CHECKED

QUALITY  
2  
CHECKED

## STAR (DATA RECORD)

Arrival Name <b>MADII RNAV</b>	Number <b>THREE</b>	STAR Computer Code <b>MADII.MADII3</b>	Superseded Number <b>TWO</b>	Dated <b>15 OCT 2015</b>	Effective Date
-----------------------------------	------------------------	---	---------------------------------	-----------------------------	----------------

FIX/NAVAID	LAT/LONG	C	FO/FB	LEG TYPE	TC	DIST (NM)	ALTITUDE	SPEED	REMARKS
FGHRN	440608.00N / 0874809.00W	Y	FB	TF	186.27	45.40			
FAH VOR/DME	434607.63N / 0875055.57W	Y	FB	TF	185.74	20.10			
KOHL	433816.97N / 0875029.01W	Y	FB	TF	177.65	07.85	FL180BFL210		
GURNN	433026.14N / 0874936.77W	Y	FB	TF	175.38	07.87	AT/BELOW FL180		
CHDRR	432010.89N / 0875219.44W	Y	FB	TF	190.92	10.44	AT 14000		
ZANDI	424942.03N / 0881427.17W	Y	FB	TF	208.15	34.52			
HOPSS	424219.25N / 0881647.79W	Y	FB	TF	193.18	07.58			
HUNKA	423157.23N / 0881713.51W	Y	FB	TF	181.75	10.37			
MADII	421803.47N / 0881849.73W	Y	FB	TF	184.90	13.94			

## En Route Transition

GRB VORTAC	443318.58N / 0881141.48W	Y		IF					GRB.MADII3
FGHRN	440608.00N / 0874809.00W	Y	FB	TF	147.99	32.00			
FAH VOR/DME	434607.63N / 0875055.57W	Y	FB	TF	185.74	20.10			
KOHL	433816.97N / 0875029.01W	Y	FB	TF	177.65	07.85	FL180BFL210		
GURNN	433026.14N / 0874936.77W	Y	FB	TF	175.38	07.87	AT/BELOW FL180		
CHDRR	432010.89N / 0875219.44W	Y	FB	TF	190.92	10.44	AT 14000		
ZANDI	424942.03N / 0881427.17W	Y	FB	TF	208.15	34.52			
HOPSS	424219.25N / 0881647.79W	Y	FB	TF	193.18	07.58			
HUNKA	423157.23N / 0881713.51W	Y	FB	TF	181.75	10.37			
MADII	421803.47N / 0881849.73W	Y	FB	TF	184.90	13.94			

## En Route Transition

KOHL	433816.97N / 0875029.01W	Y		IF			FL180BFL210		KOHL.MADII3
GURNN	433026.14N / 0874936.77W	Y	FB	TF	175.38	07.87	AT/BELOW FL180		
CHDRR	432010.89N / 0875219.44W	Y	FB	TF	190.92	10.44	AT 14000		
ZANDI	424942.03N / 0881427.17W	Y	FB	TF	208.15	34.52			
HOPSS	424219.25N / 0881647.79W	Y	FB	TF	193.18	07.58			

QUALITY  
2  
CHECKED

## STAR (DATA RECORD)

Arrival Name	Number	STAR Computer Code	Superseded Number	Dated	Effective Date
MADII RNAV	THREE	MADII.MADII3	TWO	15 OCT 2015	

FIX/NAVAID	LAT/LONG	C	FO/FB	LEG TYPE	TC	DIST (NM)	ALTITUDE	SPEED	REMARKS
HUNKA	423157.23N / 0881713.51W	Y	FB	TF	181.75	10.37			
MADII	421803.47N / 0881849.73W	Y	FB	TF	184.90	13.94			

## En Route Transition

LGHRN	441647.00N / 0870738.00W	Y		IF					LGHRN.MADII3
FGHRN	440608.00N / 0874809.00W	Y	FB	TF	250.17	31.04			
FAH VOR/DME	434607.63N / 0875055.57W	Y	FB	TF	185.74	20.10			
KOHL	433816.97N / 0875029.01W	Y	FB	TF	177.65	07.85	FL180BFL210		
GURNN	433026.14N / 0874936.77W	Y	FB	TF	175.38	07.87	AT/BELOW FL180		
CHDRR	432010.89N / 0875219.44W	Y	FB	TF	190.92	10.44	AT 14000		
ZANDI	424942.03N / 0881427.17W	Y	FB	TF	208.15	34.52			
HOPSS	424219.25N / 0881647.79W	Y	FB	TF	193.18	07.58			
HUNKA	423157.23N / 0881713.51W	Y	FB	TF	181.75	10.37			
MADII	421803.47N / 0881849.73W	Y	FB	TF	184.90	13.94			

## En Route Transition

ZANDI	424942.03N / 0881427.17W	Y		IF					ZANDI.MADII3
HOPSS	424219.25N / 0881647.79W	Y	FB	TF	193.18	07.58			
HUNKA	423157.23N / 0881713.51W	Y	FB	TF	181.75	10.37			
MADII	421803.47N / 0881849.73W	Y	FB	TF	184.90	13.94			

## Common Route

MADII	421803.47N / 0881849.73W	Y		IF					MADII.MADII3
SOOLU	421146.95N / 0880851.70W	Y	FB	TF	130.22	09.70			

## Runway Transition

SOOLU	421146.95N / 0880851.70W	Y		IF					
KURKK	420530.61N / 0880137.92W	Y	FB	TF	139.34	08.26			
VULCN	420530.34N / 0874739.02W	Y	FB	TF	089.95	10.41			

QUALITY  
2  
CHECKED



## STAR (DATA RECORD)

Arrival Name	Number	STAR Computer Code	Superseded Number	Dated	Effective Date
MADII RNAV	THREE	MADII.MADII3	TWO	15 OCT 2015	

FIX/NAVAID	LAT/LONG	C	FO/FB	LEG TYPE	TC	DIST (NM)	ALTITUDE	SPEED	REMARKS
HIMGO	420527.84N / 0873031.89W	Y	FO	TF	090.09	12.75			
KORD:KORD RWY 4 L/R, 9L/R, 10L/R, 15, 22L/R, 27 L/R				FM	090.09				RECOMMENDED NAVAID: MZZ VOR/DME

## Runway Transition

SOOLU	421146.95N / 0880851.70W	Y		IF					
JORJO	415304.14N / 0875918.78W	Y	FB	TF	159.12	20.01			
MONKZ	415303.59N / 0874806.47W	Y	FB	TF	090.00	08.37			
TONIE	415301.37N / 0872926.75W	Y	FO	TF	090.05	13.94			
KORD:RWY 28L/C/R				FM	090.05				RECOMMENDED NAVAID: MZZ VOR/DME

QUALITY  
2  
CHECKED