

US DEPARTMENT of TRANSPORTATION - FEDERAL AVIATION ADMINISTRATION
STANDARD TERMINAL ARRIVAL (STAR)

Bearings, headings, courses, tracks and radials are magnetic. Elevations and altitudes are in feet. MSL. Altitudes are minimum altitudes unless otherwise indicated.
Distances are in nautical miles (NM). Graphic depiction attached.

Arrival Name BENKY RNAV	Number FOUR	STAR Computer Code BENKY.BENKY4	Superseded Number THREE	Dated 15 OCT 2015	Effective Date
-----------------------------------	-----------------------	---	-----------------------------------	-----------------------------	----------------

TRANSITION ROUTES:

Transition Name	Transition Computer Codes	From FIX/NAVAID	To FIX/NAVAID	Mag Course	Distance	MEA	MOCA	MAA	Crossing Altitudes / Fixes
BRADFORD	BDF.BENKY4	BDF VORTAC	BDF VORTAC						AT/ABOVE FL220
			BYLAW	064.64	15.26	5000	2400		BETWEEN FL190 AND FL230
			BENKY	064.95	29.72	5000	2200		AT 12000
BYLAW	BYLAW.BENKY4	BYLAW	BYLAW						BETWEEN FL190 AND FL230
			BENKY	064.95	29.72	5000	2200		AT 12000
KIRKSVILLE	IRK.BENKY4	IRK VORTAC	IRK VORTAC						
			LOAMY	067.65	40.93	5000	3000		
			KEOKK	068.97	19.07	5000	2200		
			DRAMS	068.77	40.23	5000	2200		AT/BELOW FL340
			RYELY	069.19	31.06	5000	2300		AT/ABOVE FL240
			BDF VORTAC	069.39	19.02	5000	2300		AT/ABOVE FL220
			BYLAW	064.64	15.26	5000	2400		BETWEEN FL190 AND FL230
			BENKY	064.95	29.72	5000	2200		AT 12000
LOAMY	LOAMY.BENKY4	LOAMY	LOAMY						
			KEOKK	068.97	19.07	5000	2200		
			DRAMS	068.77	40.23	5000	2200		AT/BELOW FL340
			RYELY	069.19	31.06	5000	2300		AT/ABOVE FL240
			BDF VORTAC	069.39	19.02	5000	2300		AT/ABOVE FL220
			BYLAW	064.64	15.26	5000	2400		BETWEEN FL190 AND FL230
			BENKY	064.95	29.72	5000	2200		AT 12000
TRICH	TRICH.BENKY4	TRICH	TRICH						BETWEEN 13000 AND 15000
			BENKY	016.76	18.67	5000	2200		AT 12000

ARRIVAL ROUTE DESCRIPTION:

FROM BENKY ON TRACK 065.30/7.01 TO NEWRK (MEA 5000/MOCA 2100), THEN ON TRACK 050.51/13.03 TO AHSTN (MEA 5000/MOCA 2300), THEN ON TRACK 044.83/13.93 TO PETAH (MEA 5000/MOCA 2500).

LANDING RWY 10L/C/R, 09R/L, 22R/L, 04R/L, 27L, 15, 28L/C/R: FROM PETAH ON TRACK 093.44/7.24 TO JORJO (MEA 4000/MOCA 2100), THEN ON TRACK 093.00/8.37 TO MONKZ (MEA 4000/MOCA 2200), THEN ON TRACK 093.05/13.94 TO TONIE (MEA 4000/MOCA 3400), THEN ON TRACK 093.05. EXPECT RADAR VECTORS TO FINAL APPROACH COURSE.

LANDING RWY 27R: FROM PETAH ON TRACK 026.91/13.54 TO KURKK (MEA 4000/MOCA 2600), THEN ON TRACK 092.95/10.41 TO VULCN (MEA 4000/MOCA 2100), THEN ON TRACK 093.09/12.75 TO HIMGO (MEA 4000/MOCA 2000), THEN ON TRACK 093.09. EXPECT RADAR VECTORS TO FINAL APPROACH COURSE.

US DEPARTMENT of TRANSPORTATION - FEDERAL AVIATION ADMINISTRATION
STANDARD TERMINAL ARRIVAL (STAR)

Bearings, headings, courses, tracks and radials are magnetic. Elevations and altitudes are in feet. MSL. Altitudes are minimum altitudes unless otherwise indicated.
Distances are in nautical miles (NM). Graphic depiction attached.

Arrival Name	Number	STAR Computer Code	Superseded Number	Dated	Effective Date
BENKY RNAV	FOUR	BENKY.BENKY4	THREE	15 OCT 2015	

PROCEDURAL DATA NOTES:

NOTE: RADAR REQUIRED.

NOTE: RNAV 1.

NOTE: DME/DME/IRU OR GPS REQUIRED.

FIXES AND/OR HOLDING PATTERNS:

CHART HOLDING AT LOAMY: HOLD SW, RT, 067.65 INBOUND, 10 NM LEGS. CHART HOLDING AT BDF: HOLD W, RT, 069.39 INBOUND, 9 NM LEGS. CHART HOLDING AT BENKY: HOLD SW, RT, 065.30 INBOUND, 9 NM LEGS. CHART LENDR AS STAND ALONE WAYPOINT.

COMMUNICATIONS:

ORD ATIS, CHICAGO APP CON.

AIRPORTS SERVED:

CHICAGO O'HARE INTL, CHICAGO, IL

LOST COMMUNICATIONS PROCEDURE:

REMARKS:

ADDITIONAL FLIGHT DATA:

DME/DME ASSESSMENT: SAT (RNP 2.0).

REFERENCE MAGNETIC VARIATION = KORD 03W/2010

FLIGHT INSPECTED BY:

Name

Organization

Date

Signature

DEVELOPED BY:

THOMAS RUCKER, AIRSPACE/PROCEDURES MANAGER

CHICAGO ARTCC

29 Jan 2016

For

*Digitally signed by
Patrick Mulqueen*

Name

Organization

Date

Signature

APPROVED BY:

GEORGE GONZALEZ, MANAGER

AJV-5420

29 Jan 2016

*Digitally signed by
Patrick Mulqueen*

Name

Organization

Date

Signature

CHANGES:

CHANGED RWY 14R TO RWY 15.

STANDARD TERMINAL ARRIVAL (STAR)

Bearings, headings, courses, tracks and radials are magnetic. Elevations and altitudes are in feet. MSL. Altitudes are minimum altitudes unless otherwise indicated.

Distances are in nautical miles (NM). Graphic depiction attached.

Arrival Name	Number	STAR Computer Code	Superseded Number	Dated	Effective Date
BENKY RNAV	FOUR	BENKY.BENKY4	THREE	15 OCT 2015	

REASONS:

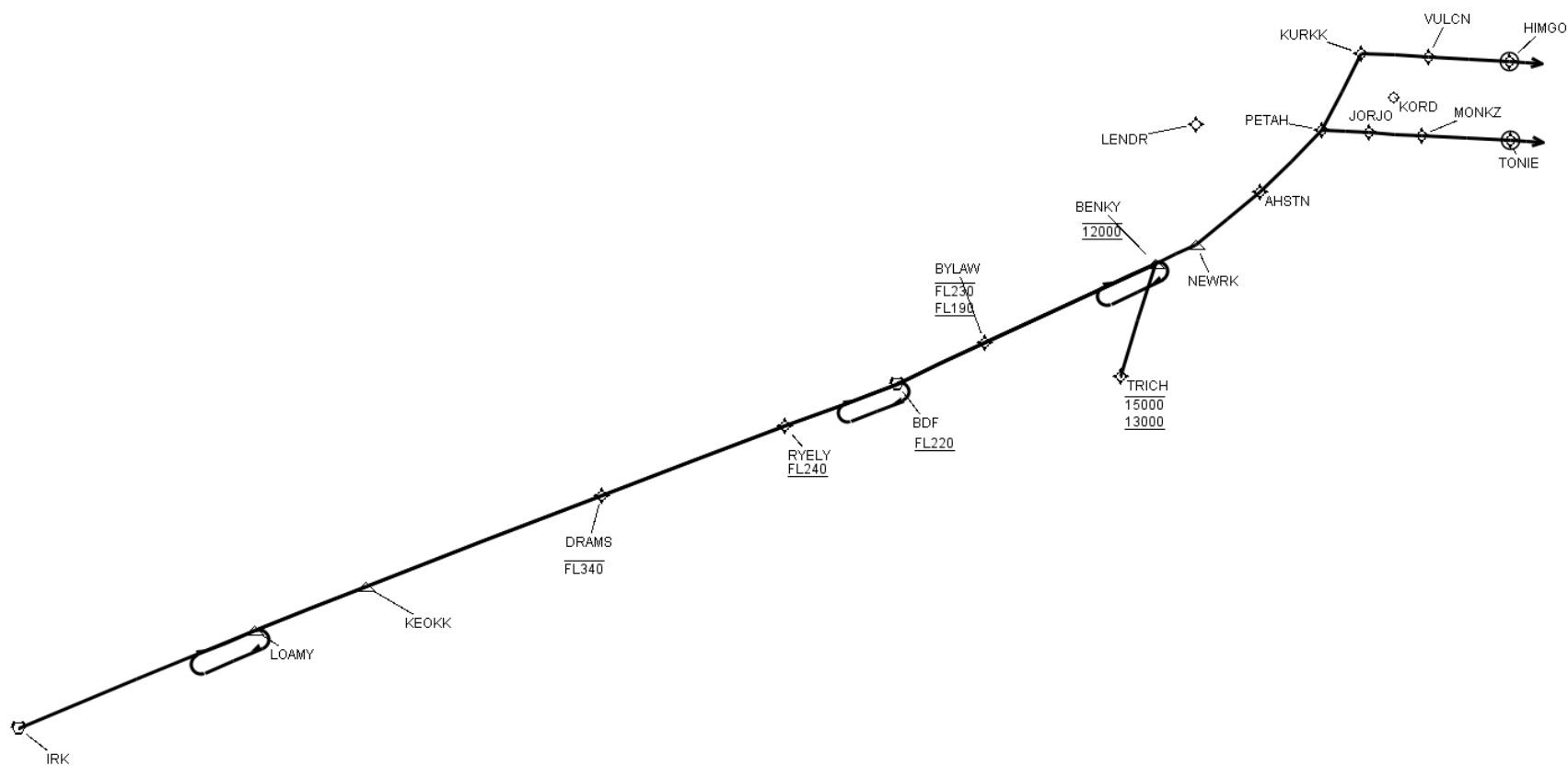
RUNWAY BEING RENUMBERED.

QUALITY
17
CHECKED

US DEPARTMENT of TRANSPORTATION - FEDERAL AVIATION ADMINISTRATION
STANDARD TERMINAL ARRIVAL (STAR)

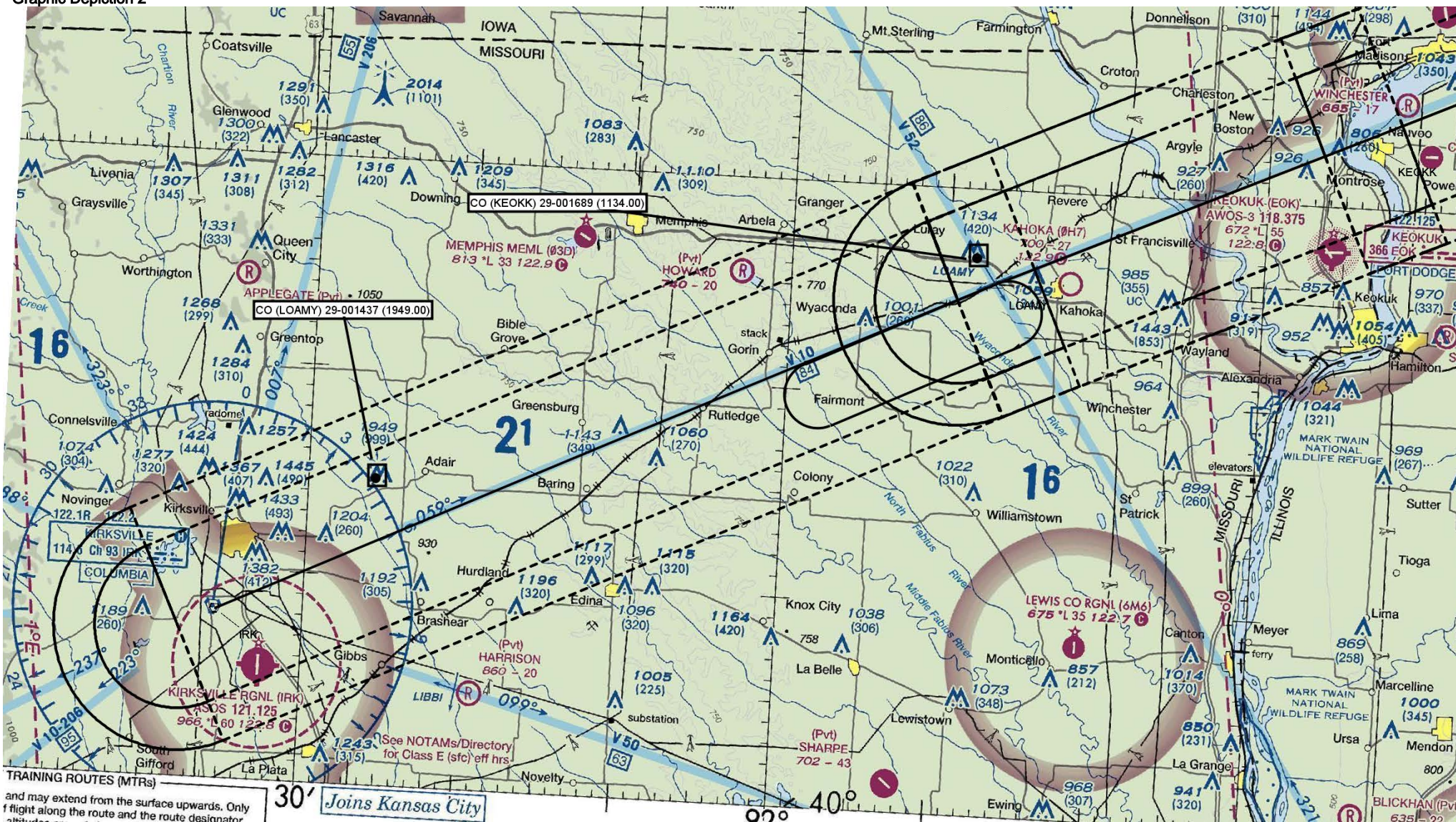
Bearings, headings, courses, tracks and radials are magnetic. Elevations and altitudes are in feet. MSL. Altitudes are minimum altitudes unless otherwise indicated.
 Distances are in nautical miles (NM). Graphic depiction attached.

Arrival Name	Number	STAR Computer Code	Superseded Number	Dated	Effective Date
BENKY RNAV	FOUR	BENKY.BENKY4	THREE	15 OCT 2015	
Graphic Depiction 1					



Bearings, headings, courses, tracks and radials are magnetic. Elevations and altitudes are in feet. MSL. Altitudes are minimum altitudes unless otherwise indicated.
Distances are in nautical miles (NM). Graphic depiction attached.

Graphic Depiction 2

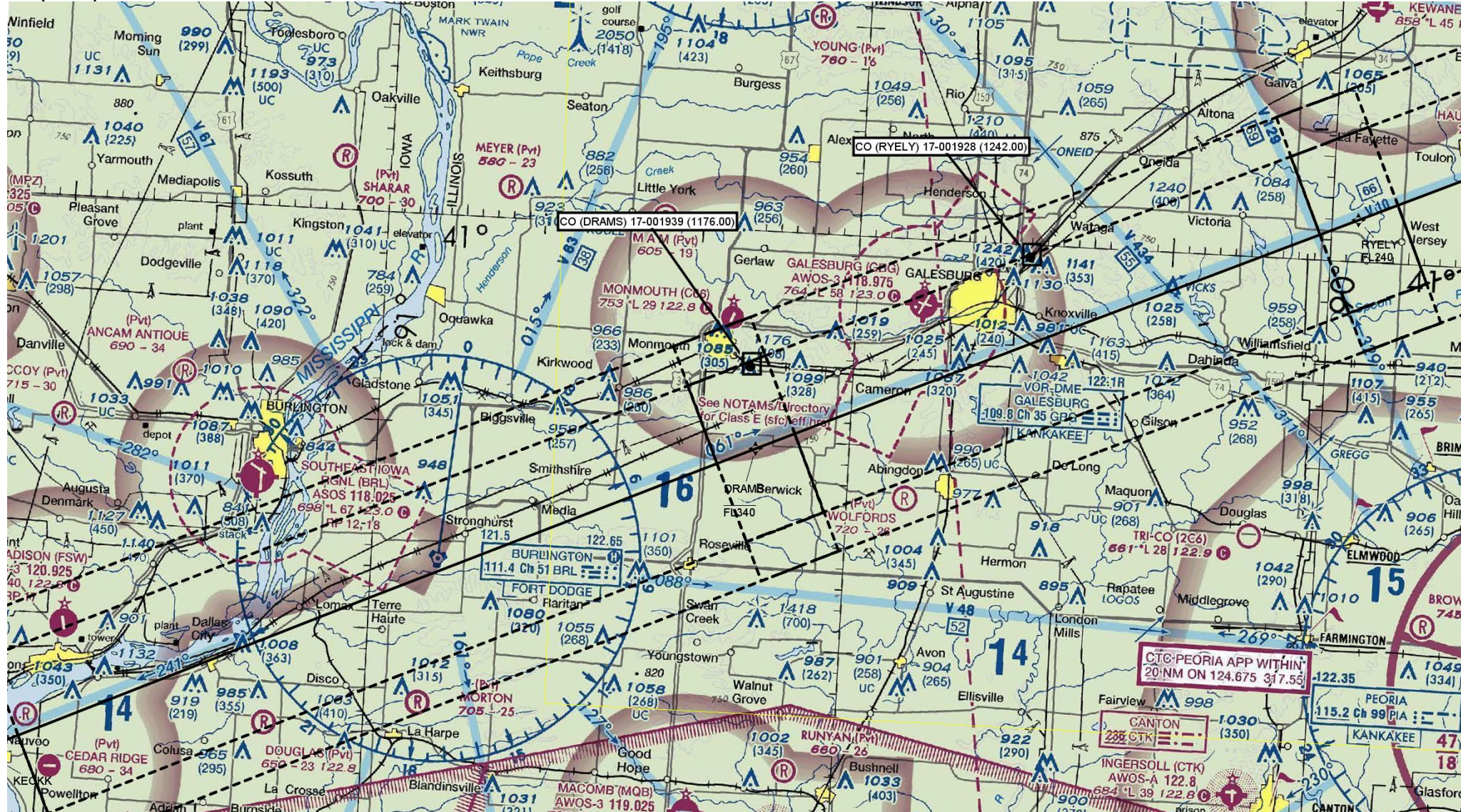


US DEPARTMENT of TRANSPORTATION - FEDERAL AVIATION ADMINISTRATION
STANDARD TERMINAL ARRIVAL (STAR)

Bearings, headings, courses, tracks and radials are magnetic. Elevations and altitudes are in feet. MSL. Altitudes are minimum altitudes unless otherwise indicated.
Distances are in nautical miles (NM). Graphic depiction attached.

Arrival Name	Number	STAR Computer Code	Superseded Number	Dated	Effective Date
BENKY RNAV	FOUR	BENKY.BENKY4	THREE	15 OCT 2015	

Graphic Depiction 3

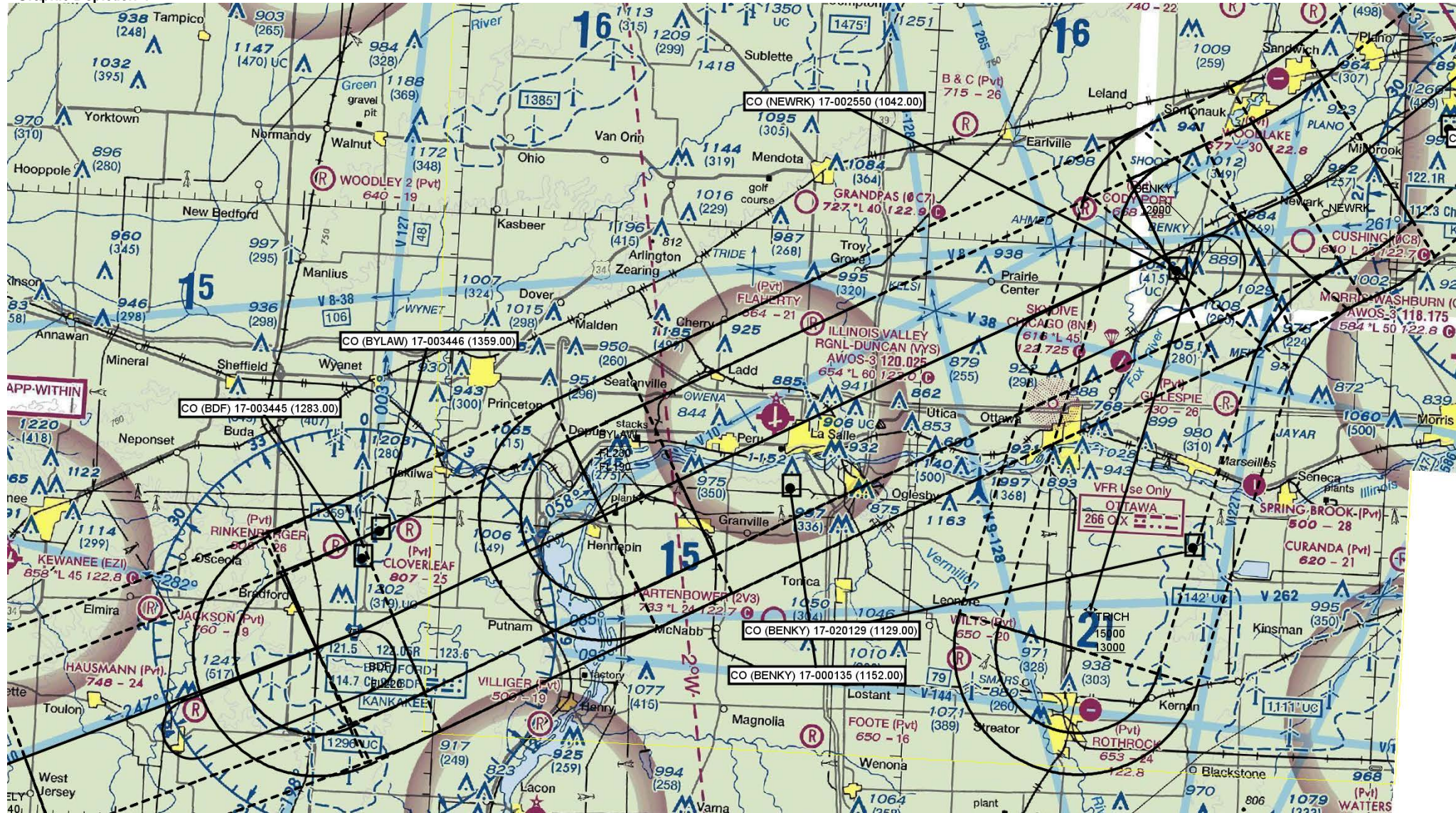


US DEPARTMENT of TRANSPORTATION - FEDERAL AVIATION ADMINISTRATION
STANDARD TERMINAL ARRIVAL (STAR)

Bearings, headings, courses, tracks and radials are magnetic. Elevations and altitudes are in feet. MSL. Altitudes are minimum altitudes unless otherwise indicated.
Distances are in nautical miles (NM). Graphic depiction attached.

Arrival Name	Number	STAR Computer Code	Superseded Number	Dated	Effective Date
BENKY RNAV	FOUR	BENKY.BENKY4	THREE	15 OCT 2015	

Graphic Depiction 4

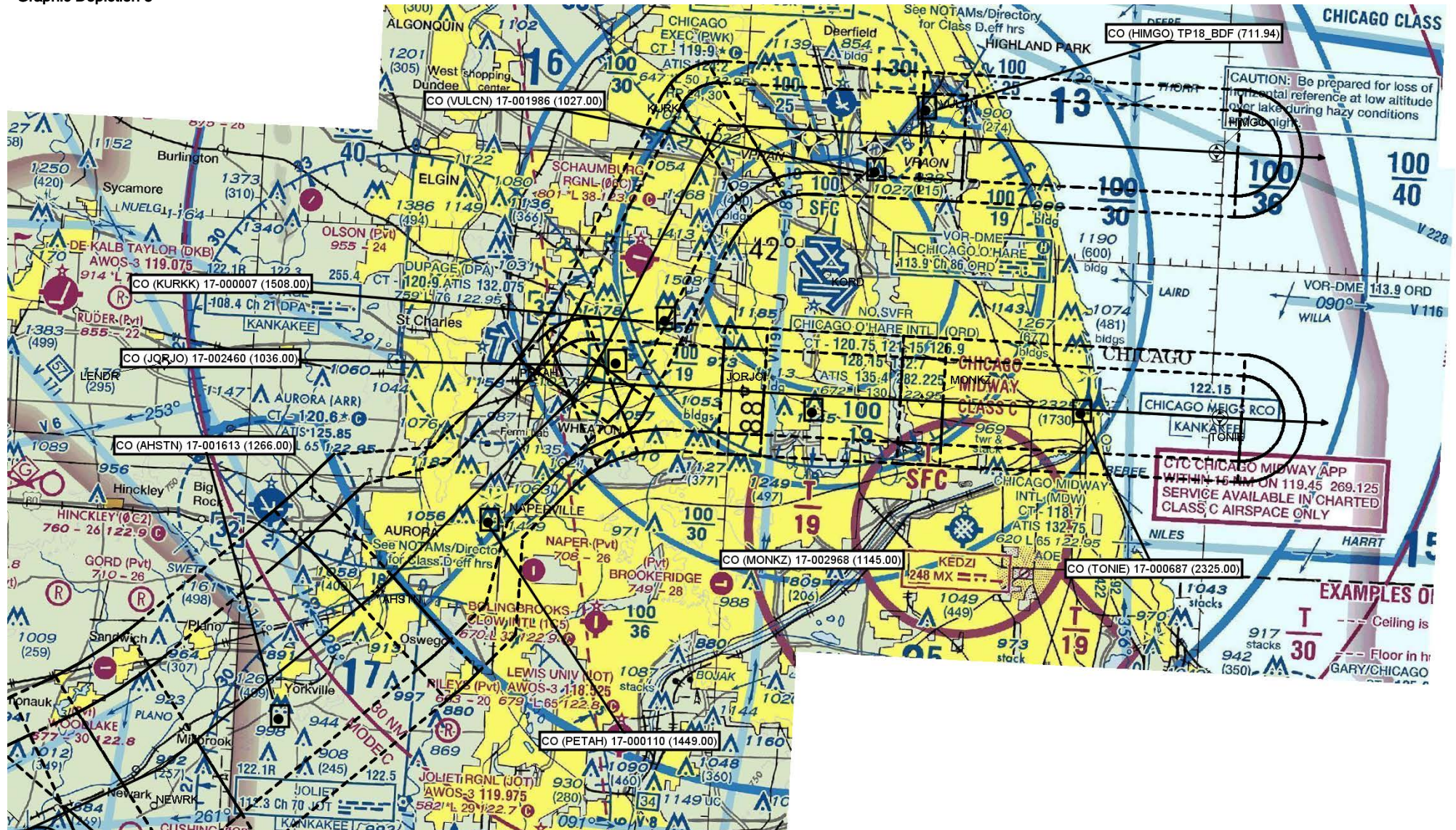


US DEPARTMENT of TRANSPORTATION - FEDERAL AVIATION ADMINISTRATION
STANDARD TERMINAL ARRIVAL (STAR)

Bearings, headings, courses, tracks and radials are magnetic. Elevations and altitudes are in feet. MSL. Altitudes are minimum altitudes unless otherwise indicated.
Distances are in nautical miles (NM). Graphic depiction attached.

Arrival Name	Number	STAR Computer Code	Superseded Number	Dated	Effective Date
BENKY RNAV	FOUR	BENKY.BENKY4	THREE	15 OCT 2015	

Graphic Depiction 5



STAR (DATA RECORD)

Arrival Name BENKY RNAV	Number FOUR	STAR Computer Code BENKY.BENKY4	Superseded Number THREE	Dated 15 OCT 2015	Effective Date
-----------------------------------	-----------------------	---	-----------------------------------	-----------------------------	----------------

FIX/NAVAID	LAT/LONG	C	FO/FB	LEG TYPE	TC	DIST (NM)	ALTITUDE	SPEED	REMARKS
En Route Transition									
BDF VORTAC	410935.03N / 0893516.34W	Y		IF			AT/ABOVE FL220		BDF.BENKY4
BYLAW	411648.90N / 0891727.51W	Y	FB	TF	061.64	15.26	FL190BFL230		
BENKY	413042.59N / 0884232.46W	Y	FB	TF	061.95	29.72	AT 12000		
En Route Transition									
BYLAW	411648.90N / 0891727.51W	Y		IF			FL190BFL230		BYLAW.BENKY4
BENKY	413042.59N / 0884232.46W	Y	FB	TF	061.95	29.72	AT 12000		
En Route Transition									
IRK VORTAC	400806.06N / 0923530.17W	Y		IF					IRK.BENKY4
LOAMY	402528.31N / 0914703.84W	Y	FB	TF	064.65	40.93			
KEOKK	403312.25N / 0912413.20W	Y	FB	TF	065.97	19.07			
DRAMS	404933.23N / 0903553.78W	Y	FB	TF	065.77	40.23	AT/BELOW FL340		
RYELY	410200.00N / 0895821.00W	Y	FB	TF	066.19	31.06	AT/ABOVE FL240		
BDF VORTAC	410935.03N / 0893516.34W	Y	FB	TF	066.39	19.02	AT/ABOVE FL220		
BYLAW	411648.90N / 0891727.51W	Y	FB	TF	061.64	15.26	FL190BFL230		
BENKY	413042.59N / 0884232.46W	Y	FB	TF	061.95	29.72	AT 12000		
En Route Transition									
LOAMY	402528.31N / 0914703.84W	Y		IF					LOAMY.BENKY4
KEOKK	403312.25N / 0912413.20W	Y	FB	TF	065.97	19.07			
DRAMS	404933.23N / 0903553.78W	Y	FB	TF	065.77	40.23	AT/BELOW FL340		
RYELY	410200.00N / 0895821.00W	Y	FB	TF	066.19	31.06	AT/ABOVE FL240		
BDF VORTAC	410935.03N / 0893516.34W	Y	FB	TF	066.39	19.02	AT/ABOVE FL220		
BYLAW	411648.90N / 0891727.51W	Y	FB	TF	061.64	15.26	FL190BFL230		
BENKY	413042.59N / 0884232.46W	Y	FB	TF	061.95	29.72	AT 12000		

QUALITY
17
CHECKED

STAR (DATA RECORD)

Arrival Name	Number	STAR Computer Code	Superseded Number	Dated	Effective Date
BENKY RNAV	FOUR	BENKY.BENKY4	THREE	15 OCT 2015	

FIX/NAVAID	LAT/LONG	C	FO/FB	LEG TYPE	TC	DIST (NM)	ALTITUDE	SPEED	REMARKS
En Route Transition									
TRICH	411233.94N / 0884827.19W	Y		IF			13000B15000		TRICH.BENKY4
BENKY	413042.59N / 0884232.46W	Y	FB	TF	013.76	18.67	AT 12000		
Common Route									
BENKY	413042.59N / 0884232.46W	Y		IF			AT 12000		BENKY.BENKY4
NEWRK	413358.05N / 0883416.03W	Y	FB	TF	062.30	07.01			
AHSTN	414245.58N / 0882126.41W	Y	FB	TF	047.51	13.03			
PETAH	415307.86N / 0880900.21W	Y	FB	TF	041.83	13.93			
Runway Transition									
PETAH	415307.86N / 0880900.21W	Y		IF					
JORJO	415304.14N / 0875918.78W	Y	FB	TF	090.44	07.24			
MONKZ	415303.59N / 0874806.47W	Y	FB	TF	090.00	08.37			
TONIE	415301.37N / 0872926.75W	Y	FO	TF	090.05	13.94			
KORD:RWY 4L/R, 9L/R, 10L/C/R, 15, 22L/R, 27L, 28L/C/R				FM	090.05				RECOMMENDED NAVAID: MZZ VOR/DME
Runway Transition									
PETAH	415307.86N / 0880900.21W	Y		IF					
KURKK	420530.61N / 0880137.92W	Y	FB	TF	023.91	13.54			
VULCN	420530.34N / 0874739.02W	Y	FB	TF	089.95	10.41			
HIMGO	420527.84N / 0873031.89W	Y	FO	TF	090.09	12.75			
KORD:RWY 27R				FM	090.09				RECOMMENDED NAVAID: MZZ VOR/DME

QUALITY
17
CHECKED