

US DEPARTMENT of TRANSPORTATION - FEDERAL AVIATION ADMINISTRATION  
**STANDARD TERMINAL ARRIVAL (STAR)**

Bearings, headings, courses, tracks and radials are magnetic. Elevations and altitudes are in feet. MSL. Altitudes are minimum altitudes unless otherwise indicated.  
 Distances are in nautical miles (NM). Graphic depiction attached.

Arrival Name <b>ERNNY RNAV</b>	Number <b>FOUR</b>	STAR Computer Code <b>ERNNY.ERNNY4</b>	Superseded Number <b>THREE</b>	Dated <b>15 OCT 2015</b>	Effective Date
-----------------------------------	-----------------------	---	-----------------------------------	-----------------------------	----------------

TRANSITION ROUTES:

Transition Name	Transition Computer Codes	From FIX/NAVAID	To FIX/NAVAID	Mag Course	Distance	MEA	MOCA	MAA	Crossing Altitudes / Fixes
CHDRR	CHDRR.ERNNY4	CHDRR	CHDRR						AT 14000
			LYNNI	159.90	32.70	6000	2100		
			PHRLY	154.73	07.45	6000	2800		
			SWIIS	184.66	12.01	6000	2800		
			ERNNY	188.61	11.23	6000	2800		
FALLS	FAH.ERNNY4	FAH VOR/DME	FAH VOR/DME						
			KOHL	180.65	07.85	9000	2200		BETWEEN FL180 AND FL210
			GURNN	178.38	07.87	6000	2200		AT/BELOW FL180
			CHDRR	193.92	10.44	6000	2100		AT 14000
			LYNNI	159.90	32.70	6000	2100		
			PHRLY	154.73	07.45	6000	2800		
			SWIIS	184.66	12.01	6000	2800		
			ERNNY	188.61	11.23	6000	2800		
FGHRN	FGHRN.ERNNY4	FGHRN	FGHRN						
			FAH VOR/DME	188.74	20.10	9000	2300		
			KOHL	180.65	07.85	9000	2200		BETWEEN FL180 AND FL210
			GURNN	178.38	07.87	6000	2200		AT/BELOW FL180
			CHDRR	193.92	10.44	6000	2100		AT 14000
			LYNNI	159.90	32.70	6000	2100		
			PHRLY	154.73	07.45	6000	2800		
			SWIIS	184.66	12.01	6000	2800		
			ERNNY	188.61	11.23	6000	2800		
FOLGO	FOLGO.ERNNY4	FOLGO	FOLGO						
			FGHRN	189.27	45.40	16000	2400		
			FAH VOR/DME	188.74	20.10	9000	2300		
			KOHL	180.65	07.85	9000	2200		BETWEEN FL180 AND FL210
			GURNN	178.38	07.87	6000	2200		AT/BELOW FL180
			CHDRR	193.92	10.44	6000	2100		AT 14000

US DEPARTMENT of TRANSPORTATION - FEDERAL AVIATION ADMINISTRATION  
**STANDARD TERMINAL ARRIVAL (STAR)**

Bearings, headings, courses, tracks and radials are magnetic. Elevations and altitudes are in feet. MSL. Altitudes are minimum altitudes unless otherwise indicated.  
 Distances are in nautical miles (NM). Graphic depiction attached.

Arrival Name ERNNY RNAV		Number FOUR		STAR Computer Code ERNNY.ERNNY4		Superseded Number THREE			Dated 15 OCT 2015		Effective Date
Transition Name	Transition Computer Codes	From FIX/NAVAID	To FIX/NAVAID	Mag Course	Distance	MEA	MOCA	MAA	Crossing Altitudes / Fixes		
			LYNNI	159.90	32.70	6000	2100				
			PHRLY	154.73	07.45	6000	2800				
			SWIIS	184.66	12.01	6000	2800				
			ERNNY	188.61	11.23	6000	2800				
GREEN BAY	GRB.ERNNY4	GRB VORTAC	GRB VORTAC								
			FGHRN	150.99	32.00	16000	3100				
			FAH VOR/DME	188.74	20.10	9000	2300				
			KOHLI	180.65	07.85	9000	2200		BETWEEN FL180 AND FL210		
			GURNN	178.38	07.87	6000	2200		AT/BELOW FL180		
			CHDRR	193.92	10.44	6000	2100		AT 14000		
			LYNNI	159.90	32.70	6000	2100				
			PHRLY	154.73	07.45	6000	2800				
			SWIIS	184.66	12.01	6000	2800				
			ERNNY	188.61	11.23	6000	2800				
KOHLI	KOHLI.ERNNY4	KOHLI	KOHLI						BETWEEN FL180 AND FL210		
			GURNN	178.38	07.87	6000	2200		AT/BELOW FL180		
			CHDRR	193.92	10.44	6000	2100		AT 14000		
			LYNNI	159.90	32.70	6000	2100				
			PHRLY	154.73	07.45	6000	2800				
			SWIIS	184.66	12.01	6000	2800				
			ERNNY	188.61	11.23	6000	2800				
LGHRN	LGHRN.ERNNY4	LGHRN	LGHRN								
			FGHRN	253.17	31.04	16000	2300				
			FAH VOR/DME	188.74	20.10	9000	2300				
			KOHLI	180.65	07.85	9000	2200		BETWEEN FL180 AND FL210		
			GURNN	178.38	07.87	6000	2200		AT/BELOW FL180		
			CHDRR	193.92	10.44	6000	2100		AT 14000		
			LYNNI	159.90	32.70	6000	2100				
			PHRLY	154.73	07.45	6000	2800				

US DEPARTMENT of TRANSPORTATION - FEDERAL AVIATION ADMINISTRATION  
**STANDARD TERMINAL ARRIVAL (STAR)**

Bearings, headings, courses, tracks and radials are magnetic. Elevations and altitudes are in feet. MSL. Altitudes are minimum altitudes unless otherwise indicated.  
Distances are in nautical miles (NM). Graphic depiction attached.

Arrival Name ERNNY RNAV		Number FOUR		STAR Computer Code ERNNY.ERNNY4		Superseded Number THREE			Dated 15 OCT 2015	Effective Date
Transition Name	Transition Computer Codes	From FIX/NAVAID	To FIX/NAVAID	Mag Course	Distance	MEA	MOCA	MAA	Crossing Altitudes / Fixes	
			SWIIS	184.66	12.01	6000	2800			
			ERNNY	188.61	11.23	6000	2800			
SPAHN	SPAHN.ERNNY4	SPAHN	SPAHN							AT/BELOW 10000
			LYNNI	150.48	04.00	6000	1800			
			PHRLY	154.73	07.45	6000	2800			
			SWIIS	184.66	12.01	6000	2800			
			ERNNY	188.61	11.23	6000	2800			
STASH	STASH.ERNNY4	STASH	STASH							
			TOWNE	300.22	15.33	5000	2200			
			PRADY	315.61	08.05	5000	2100			
			MUSKY	326.02	13.16	5000	1800			
			MINCE	278.50	05.70	5000	2800			AT/BELOW 10000
			ERNNY	299.96	23.46	5000	2800			
YOLUR	YOLUR.ERNNY4	YOLUR	YOLUR							
			MUSKY	273.78	14.00	5000	1800			
			MINCE	278.50	05.70	5000	2800			AT/BELOW 10000
			ERNNY	299.96	23.46	5000	2800			

**ARRIVAL ROUTE DESCRIPTION:**

FROM ERNNY ON TRACK 221.28/5.25 TO PAPPI (MEA 5000/MOCA 2800), THEN ON TRACK 221.03/6.78 TO TUBEZ (MEA 5000/MOCA 2800).

LANDING RWY 09R/L, 10L/C, 22R/L, 04R/L, 27R/L, 15, 28L/C/R: FROM TUBEZ ON TRACK 220.97/6.78 TO VULCN (MEA 4000/MOCA 1900), THEN ON TRACK 273.10/10.41 TO KURKK (MEA 4000/MOCA 2100), THEN ON TRACK 272.82/11.09 TO BAMBB (MEA 4000/MOCA 2200), THEN ON TRACK 272.82. EXPECT RADAR VECTORS TO FINAL APPROACH COURSE.

LANDING RWY 10R: FROM TUBEZ ON TRACK 197.28/18.35 TO MONKZ (MEA 4000/MOCA 2200), THEN ON TRACK 273.13/8.37 TO JORJO (MEA 4000/MOCA 2200), THEN ON TRACK 270.47/12.86 TO POSSM (MEA 4000/MOCA 2200), THEN ON TRACK 270.47. EXPECT RADAR VECTORS TO FINAL APPROACH COURSE.

**PROCEDURAL DATA NOTES:**

NOTE: RADAR REQUIRED.

NOTE: RNAV 1.

NOTE: DME/DME/IRU OR GPS REQUIRED.

NOTE: LANDING RWYS 4L/R, 15, 22L/R, 27L/R, 28C/R: EXPECT RADAR VECTORS TO FINAL APPROACH COURSE AFTER ERNRY.

NOTE: YOLUR TRANSITION - ATC ASSIGNED ONLY.

NOTE: STASH TRANSITION - ATC ASSIGNED ONLY.

NOTE: SPAHN TRANSITION: FOR MILWAUKEE TERMINAL AREA DEPARTURES ONLY

US DEPARTMENT of TRANSPORTATION - FEDERAL AVIATION ADMINISTRATION  
**STANDARD TERMINAL ARRIVAL (STAR)**

Bearings, headings, courses, tracks and radials are magnetic. Elevations and altitudes are in feet. MSL. Altitudes are minimum altitudes unless otherwise indicated.  
Distances are in nautical miles (NM). Graphic depiction attached.

Arrival Name	Number	STAR Computer Code	Superseded Number	Dated	Effective Date
<b>ERNNY RNAV</b>	<b>FOUR</b>	<b>ERNNY.ERNNY4</b>	<b>THREE</b>	<b>15 OCT 2015</b>	

FIXES AND/OR HOLDING PATTERNS:

CHART HOLDING AT CHDRR: HOLD NW, LT, 150.00 INBOUND, 10 NM LEGS.  
CHART HOLDING AT LYNNI: HOLD NW, RT, 150.51 INBOUND, 10 NM LEGS.  
CHART HOLDING AT SWIIS: HOLD N, RT, 184.66 INBOUND, 10 NM LEGS.  
CHART HOLDING AT GRB VORTAC: HOLD NW, RT, 150.99 INBOUND, 10 NM LEGS.  
CHART HOLDING AT FAH VOR/DME: HOLD W, RT, 090.00 INBOUND, 10 NM LEGS.  
CHART LOMEZ AS STAND ALONE WP.

COMMUNICATIONS:

ORD ATIS, CHICAGO APP CON

AIRPORTS SERVED:

CHICAGO O'HARE INTL, CHICAGO, IL

LOST COMMUNICATIONS PROCEDURE:

REMARKS:

ADDITIONAL FLIGHT DATA:

DME/DME ASSESSMENT: SAT (RNP 2.0).  
REFERENCE MAGNETIC VARIATION = KORD 03W/2010

PROCEDURES

FLIGHT INSPECTED BY:

Name	Organization	Date	Signature
------	--------------	------	-----------

DEVELOPED BY:

THOMAS RUCKER, MANAGER,  
AIRSPACE AND PROCEDURES  
Name

CHICAGO ARTCC  
Organization

18 Mar 2016  
Date

For

Digitally signed by  
*Patrick Mulqueen*  
Signature

APPROVED BY:

PATRICK MULQUEEN, MANAGER  
Name

AJV-5442  
Organization

18 Mar 2016  
Date

Digitally signed by  
*Patrick Mulqueen*  
Signature

CHANGES: 1) CHANGED RWY 14R TO RWY 15  
2) RAISED MOCAs AT PHRLY, SWIIS, ERNNY, PAPPI, AND TUBEZ FROM 1800 TO 2800

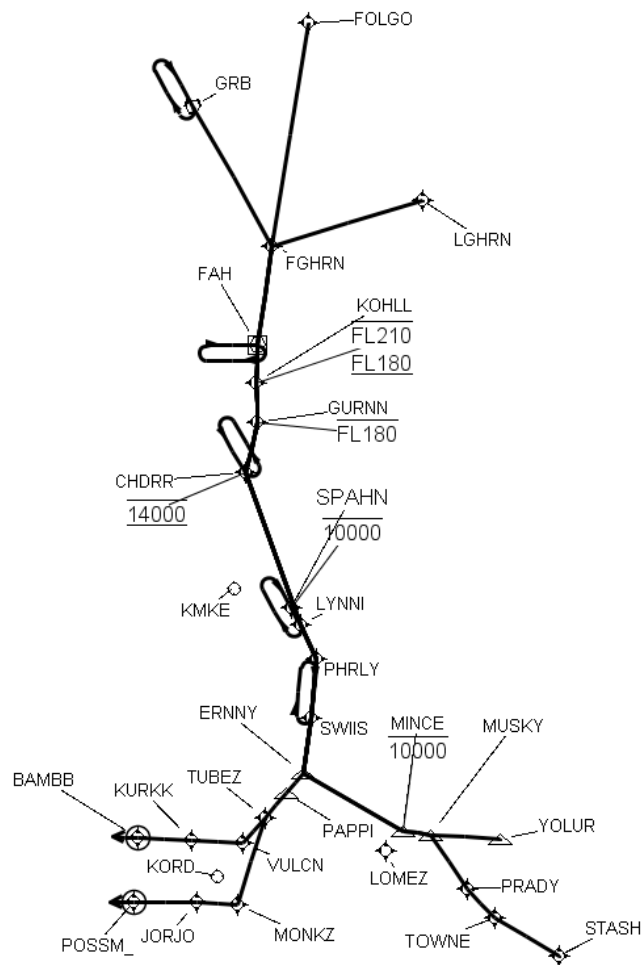
REASONS: 1) RENUMBERING OF RWY  
2) TO MATCH CHARTING OF HIGHER MOCAS OVER LAKE MICHIGAN ON THIS AND OTHER ORD STARS

US DEPARTMENT of TRANSPORTATION - FEDERAL AVIATION ADMINISTRATION  
**STANDARD TERMINAL ARRIVAL (STAR)**

Bearings, headings, courses, tracks and radials are magnetic. Elevations and altitudes are in feet. MSL. Altitudes are minimum altitudes unless otherwise indicated.  
 Distances are in nautical miles (NM). Graphic depiction attached.

Arrival Name	Number	STAR Computer Code	Superseded Number	Dated	Effective Date
ERNNY RNAV	FOUR	ERNNY.ERNNY4	THREE	15 OCT 2015	

Graphic Depiction 1





US DEPARTMENT of TRANSPORTATION - FEDERAL AVIATION ADMINISTRATION  
**STANDARD TERMINAL ARRIVAL (STAR)**

Bearings, headings, courses, tracks and radials are magnetic. Elevations and altitudes are in feet. MSL. Altitudes are minimum altitudes unless otherwise indicated.

Distances are in nautical miles (NM). Graphic depiction attached.

Arrival Name	Number	STAR Computer Code	Superseded Number	Dated	Effective Date
ERNNY RNAV	FOUR	ERNNY.ERNNY4	THREE	15 OCT 2015	
Graphic Depiction 2					



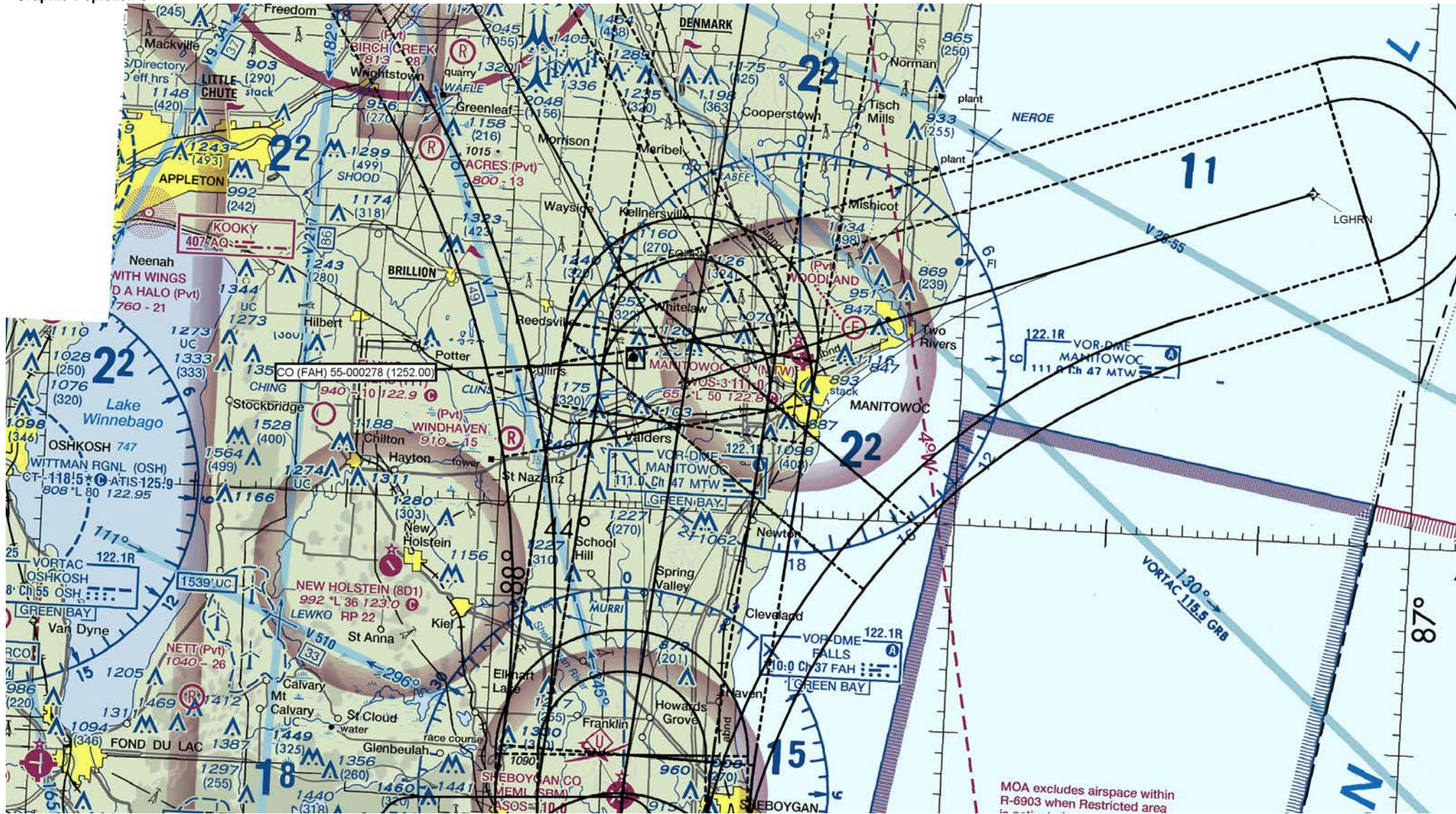


US DEPARTMENT of TRANSPORTATION - FEDERAL AVIATION ADMINISTRATION  
**STANDARD TERMINAL ARRIVAL (STAR)**

Bearings, headings, courses, tracks and radials are magnetic. Elevations and altitudes are in feet. MSL. Altitudes are minimum altitudes unless otherwise indicated.  
Distances are in nautical miles (NM). Graphic depiction attached.

Arrival Name	Number	STAR Computer Code	Superseded Number	Dated	Effective Date
ERNNY RNAV	FOUR	ERNNY.ERNNY4	THREE	15 OCT 2015	

Graphic Depiction 3





US DEPARTMENT of TRANSPORTATION - FEDERAL AVIATION ADMINISTRATION  
**STANDARD TERMINAL ARRIVAL (STAR)**

Bearings, headings, courses, tracks and radials are magnetic. Elevations and altitudes are in feet. MSL. Altitudes are minimum altitudes unless otherwise indicated.

Distances are in nautical miles (NM). Graphic depiction attached.

Arrival Name	Number	STAR Computer Code	Superseded Number	Dated	Effective Date
ERNNY RNAV	FOUR	ERNNY.ERNNY4	THREE	15 OCT 2015	

### Graphic Depiction 4

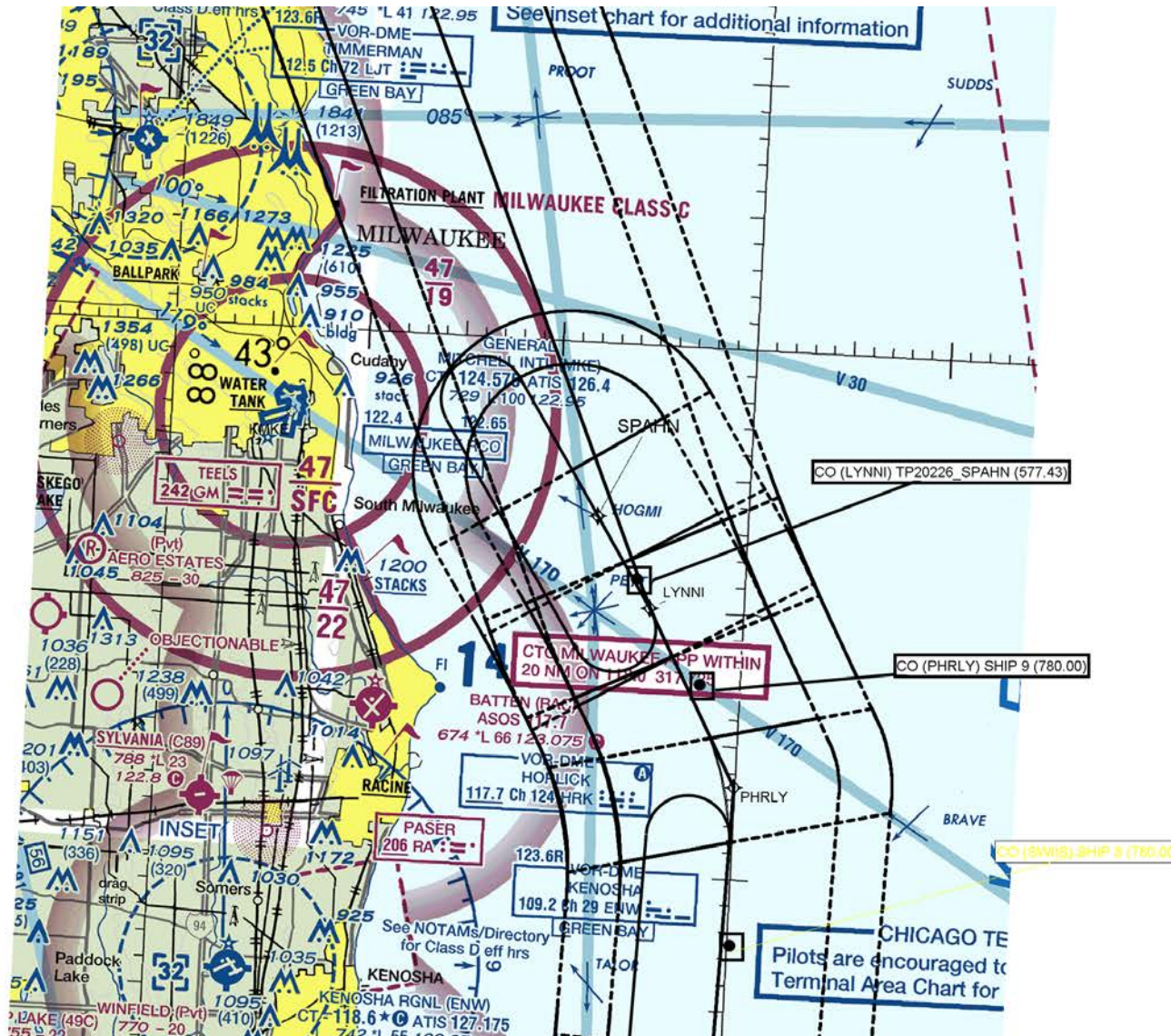




US DEPARTMENT of TRANSPORTATION - FEDERAL AVIATION ADMINISTRATION  
**STANDARD TERMINAL ARRIVAL (STAR)**

Bearings, headings, courses, tracks and radials are magnetic. Elevations and altitudes are in feet. MSL. Altitudes are minimum altitudes unless otherwise indicated.  
Distances are in nautical miles (NM). Graphic depiction attached.

Arrival Name	Number	STAR Computer Code	Superseded Number	Dated	Effective Date
ERNNY RNAV	FOUR	ERNNY.ERNNY4	THREE	15 OCT 2015	
Graphic Depiction 5					



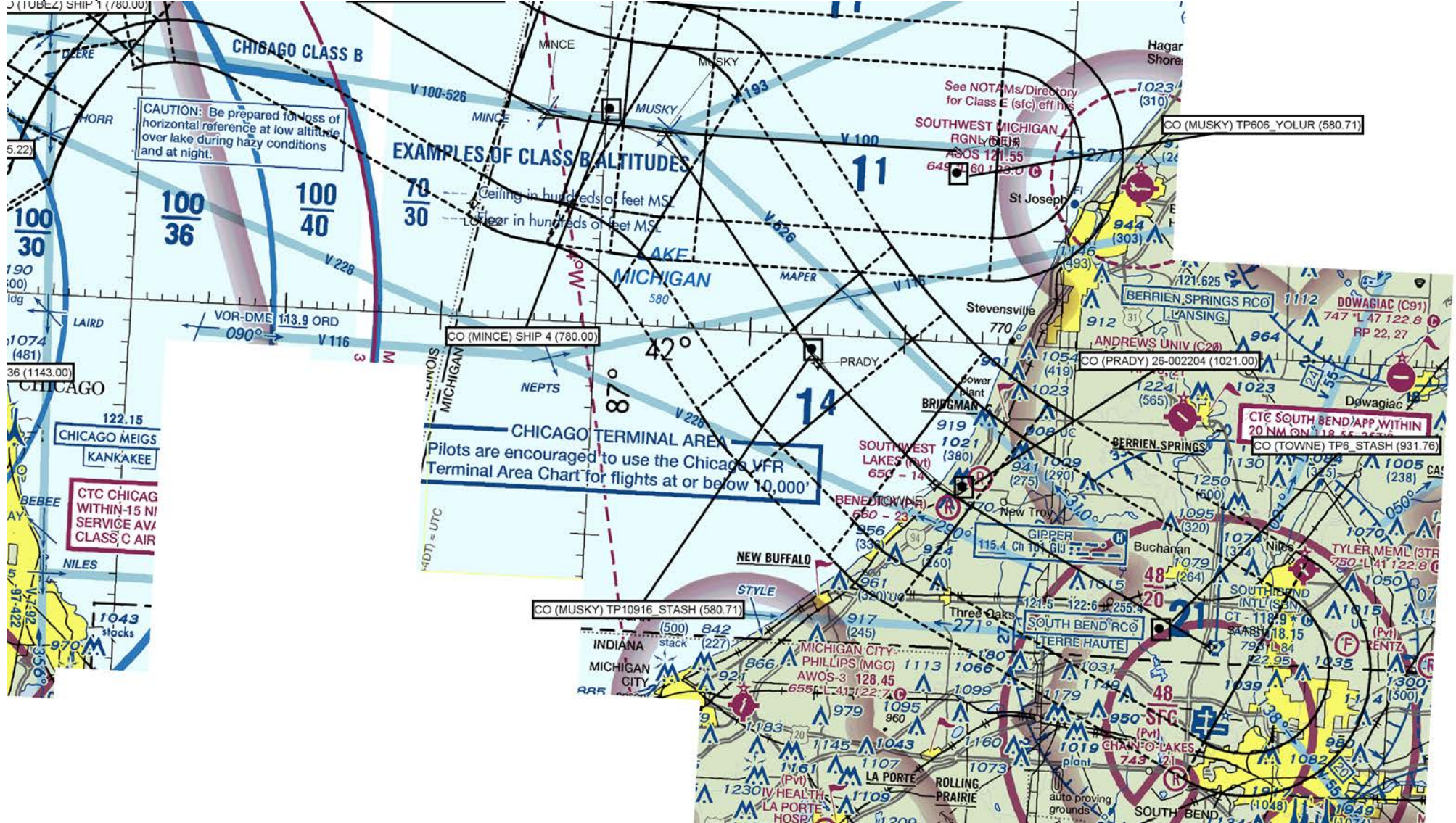


US DEPARTMENT of TRANSPORTATION - FEDERAL AVIATION ADMINISTRATION  
**STANDARD TERMINAL ARRIVAL (STAR)**

Bearings, headings, courses, tracks and radials are magnetic. Elevations and altitudes are in feet. MSL. Altitudes are minimum altitudes unless otherwise indicated.  
Distances are in nautical miles (NM). Graphic depiction attached.

Arrival Name	Number	STAR Computer Code	Superseded Number	Dated	Effective Date
ERNNY RNAV	FOUR	ERNNY.ERNNY4	THREE	15 OCT 2015	

**Graphic Depiction 6**



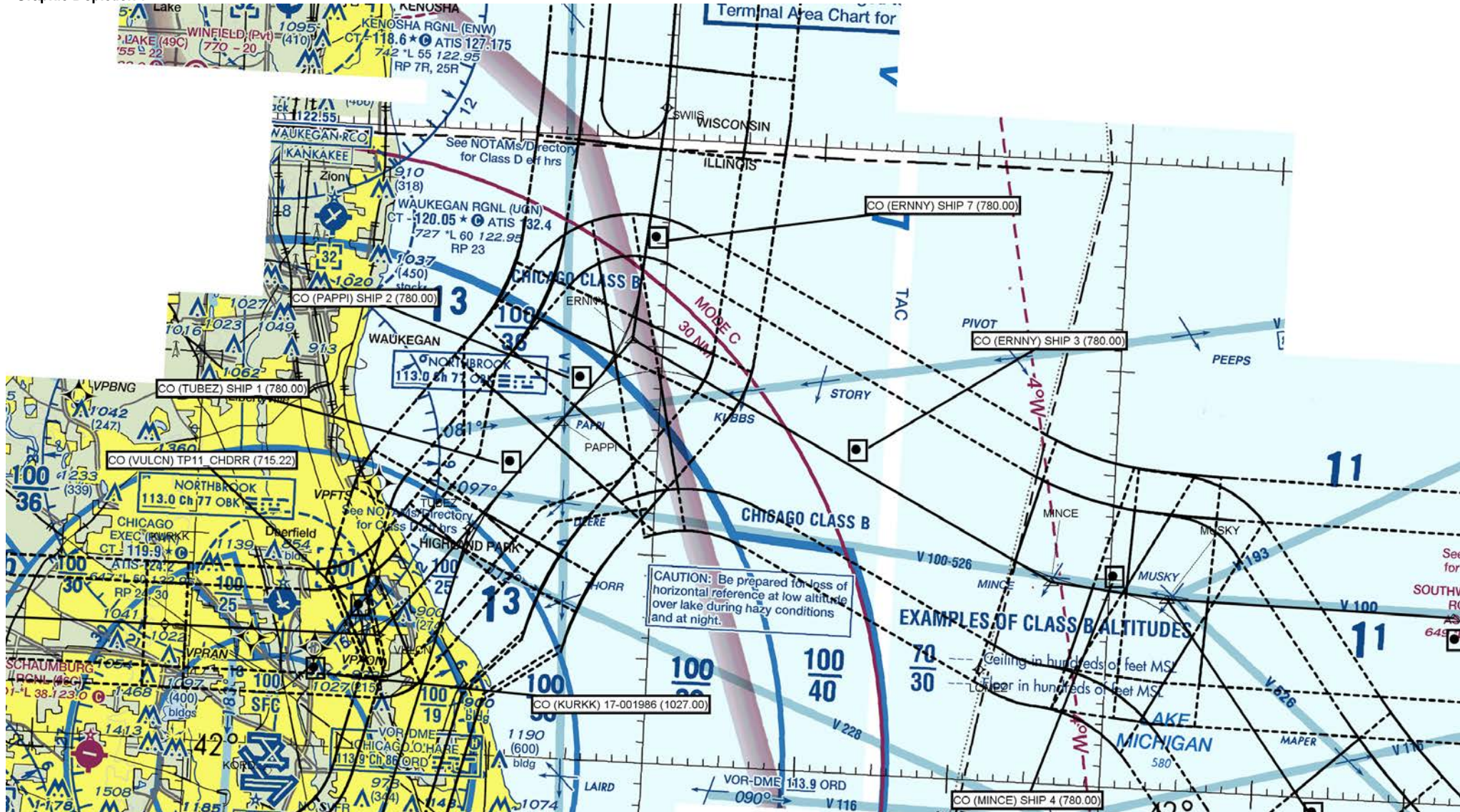


US DEPARTMENT of TRANSPORTATION - FEDERAL AVIATION ADMINISTRATION  
**STANDARD TERMINAL ARRIVAL (STAR)**

Bearings, headings, courses, tracks and radials are magnetic. Elevations and altitudes are in feet. MSL. Altitudes are minimum altitudes unless otherwise indicated.  
Distances are in nautical miles (NM). Graphic depiction attached.

Arrival Name	Number	STAR Computer Code	Superseded Number	Dated	Effective Date
ERNNY RNAV	FOUR	ERNNY.ERNNY4	THREE	15 OCT 2015	

Graphic Depiction 7

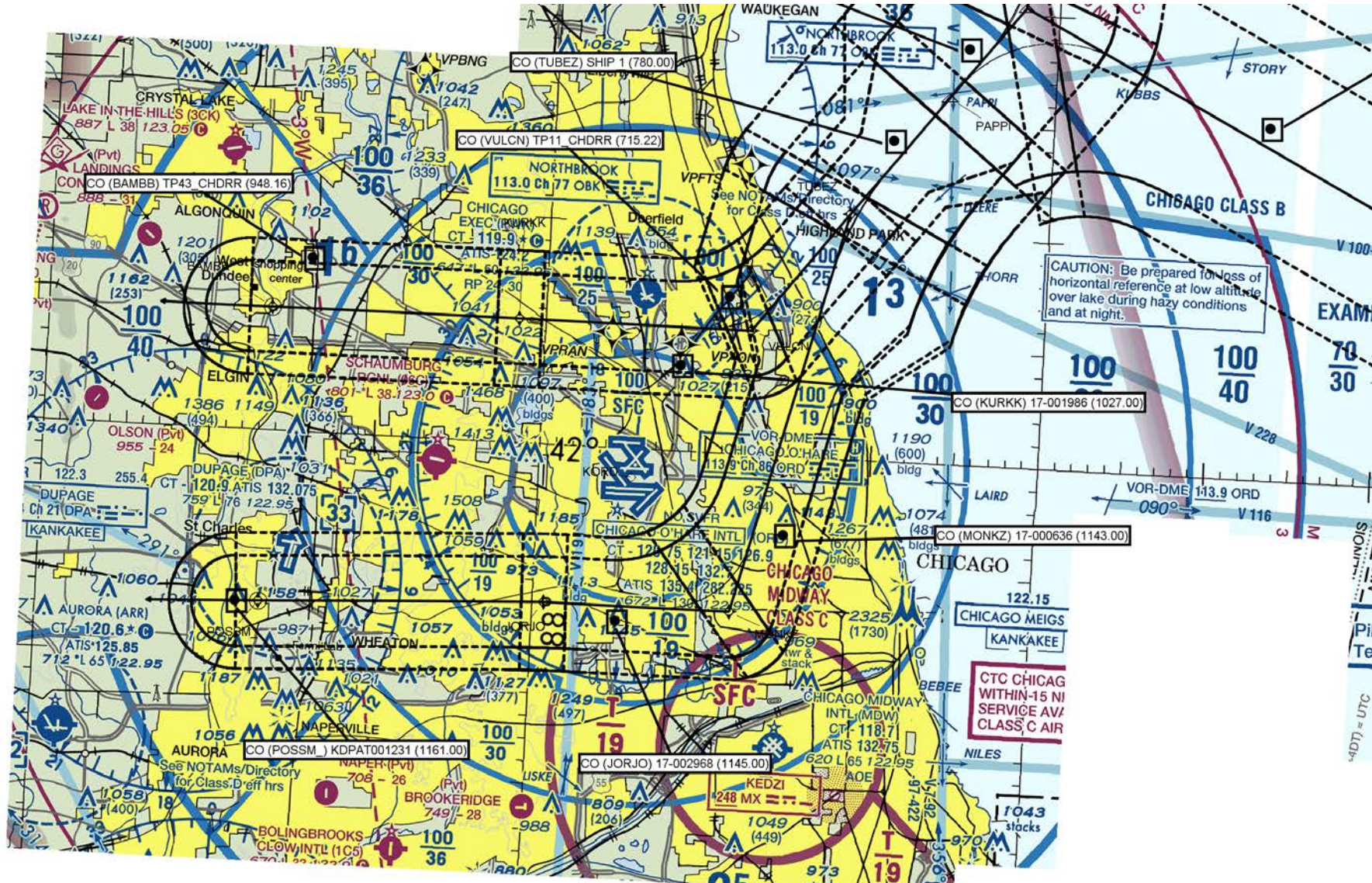




US DEPARTMENT of TRANSPORTATION - FEDERAL AVIATION ADMINISTRATION  
**STANDARD TERMINAL ARRIVAL (STAR)**

Bearings, headings, courses, tracks and radials are magnetic. Elevations and altitudes are in feet. MSL. Altitudes are minimum altitudes unless otherwise indicated.  
Distances are in nautical miles (NM). Graphic depiction attached.

Arrival Name	Number	STAR Computer Code	Superseded Number	Dated	Effective Date
ERNNY RNAV	FOUR	ERNNY.ERNNY4	THREE	15 OCT 2015	
Graphic Depiction 8					



## STAR (DATA RECORD)

Arrival Name ERNNY RNAV		Number FOUR		STAR Computer Code ERNNY.ERNNY4			Superseded Number THREE		Dated 15 OCT 2015		Effective Date	
FIX/NAVAID		LAT/LONG		C	FO/FB	LEG TYPE	TC	DIST (NM)	ALTITUDE	SPEED	REMARKS	
En Route Transition												
CHDRR	432010.89N / 0875219.44W	Y				IF			AT 14000		CHDRR.ERNNY4	
LYNNI	425004.57N / 0873453.20W	Y	FB			TF	156.90	32.70				
PHRLY	424330.57N / 0873005.93W	Y	FB			TF	151.73	07.45				
SWIIS	423130.21N / 0873034.20W	Y	FB			TF	181.66	12.01				
ERNNY	422019.39N / 0873203.06W	Y	FB			TF	185.61	11.23				
En Route Transition												
FAH VOR/DME	434607.63N / 0875055.57W	Y				IF					FAH.ERNNY4	
KOHL	433816.97N / 0875029.01W	Y	FB			TF	177.65	07.85	FL180BFL210			
GURNN	433026.14N / 0874936.77W	Y	FB			TF	175.38	07.87	AT/BELOW FL180			
CHDRR	432010.89N / 0875219.44W	Y	FB			TF	190.92	10.44	AT 14000			
LYNNI	425004.57N / 0873453.20W	Y	FB			TF	156.90	32.70				
PHRLY	424330.57N / 0873005.93W	Y	FB			TF	151.73	07.45				
SWIIS	423130.21N / 0873034.20W	Y	FB			TF	181.66	12.01				
ERNNY	422019.39N / 0873203.06W	Y	FB			TF	185.61	11.23				
En Route Transition												
FGHRN	440608.00N / 0874809.00W	Y				IF					FGHRN.ERNNY4	
FAH VOR/DME	434607.63N / 0875055.57W	Y	FB			TF	185.74	20.10				
KOHL	433816.97N / 0875029.01W	Y	FB			TF	177.65	07.85	FL180BFL210			
GURNN	433026.14N / 0874936.77W	Y	FB			TF	175.38	07.87	AT/BELOW FL180			
CHDRR	432010.89N / 0875219.44W	Y	FB			TF	190.92	10.44	AT 14000			
LYNNI	425004.57N / 0873453.20W	Y	FB			TF	156.90	32.70				
PHRLY	424330.57N / 0873005.93W	Y	FB			TF	151.73	07.45				
SWIIS	423130.21N / 0873034.20W	Y	FB			TF	181.66	12.01				
ERNNY	422019.39N / 0873203.06W	Y	FB			TF	185.61	11.23				
En Route Transition												
FOLGO	445115.84N / 0874116.27W	Y				IF					FOLGO.ERNNY4	

QUALITY  
17  
CHECKED

QUALITY  
17  
CHECKED



## STAR (DATA RECORD)

Arrival Name ERNNY RNAV	Number FOUR	STAR Computer Code ERNNY.ERNNY4	Superseded Number THREE	Dated 15 OCT 2015	Effective Date
----------------------------	----------------	------------------------------------	----------------------------	----------------------	----------------

FIX/NAVAID	LAT/LONG	C	FO/FB	LEG TYPE	TC	DIST (NM)	ALTITUDE	SPEED	REMARKS
FGHRN	440608.00N / 0874809.00W	Y	FB	TF	186.27	45.40			
FAH VOR/DME	434607.63N / 0875055.57W	Y	FB	TF	185.74	20.10			
KOHL	433816.97N / 0875029.01W	Y	FB	TF	177.65	07.85	FL180BFL210		
GURNN	433026.14N / 0874936.77W	Y	FB	TF	175.38	07.87	AT/BELOW FL180		
CHDRR	432010.89N / 0875219.44W	Y	FB	TF	190.92	10.44	AT 14000		
LYNNI	425004.57N / 0873453.20W	Y	FB	TF	156.90	32.70			
PHRLY	424330.57N / 0873005.93W	Y	FB	TF	151.73	07.45			
SWIIS	423130.21N / 0873034.20W	Y	FB	TF	181.66	12.01			
ERNNY	422019.39N / 0873203.06W	Y	FB	TF	185.61	11.23			

## En Route Transition

GRB VORTAC	443318.58N / 0881141.48W	Y		IF					GRB.ERNNY4
FGHRN	440608.00N / 0874809.00W	Y	FB	TF	147.99	32.00			
FAH VOR/DME	434607.63N / 0875055.57W	Y	FB	TF	185.74	20.10			
KOHL	433816.97N / 0875029.01W	Y	FB	TF	177.65	07.85	FL180BFL210		
GURNN	433026.14N / 0874936.77W	Y	FB	TF	175.38	07.87	AT/BELOW FL180		
CHDRR	432010.89N / 0875219.44W	Y	FB	TF	190.92	10.44	AT 14000		
LYNNI	425004.57N / 0873453.20W	Y	FB	TF	156.90	32.70			
PHRLY	424330.57N / 0873005.93W	Y	FB	TF	151.73	07.45			
SWIIS	423130.21N / 0873034.20W	Y	FB	TF	181.66	12.01			
ERNNY	422019.39N / 0873203.06W	Y	FB	TF	185.61	11.23			

## En Route Transition

KOHL	433816.97N / 0875029.01W	Y		IF			FL180BFL210		KOHL.ERNNY4
GURNN	433026.14N / 0874936.77W	Y	FB	TF	175.38	07.87	AT/BELOW FL180		
CHDRR	432010.89N / 0875219.44W	Y	FB	TF	190.92	10.44	AT 14000		
LYNNI	425004.57N / 0873453.20W	Y	FB	TF	156.90	32.70			
PHRLY	424330.57N / 0873005.93W	Y	FB	TF	151.73	07.45			

QUALITY  
17  
CHECKED



## STAR (DATA RECORD)

Arrival Name ERNNY RNAV		Number FOUR		STAR Computer Code ERNNY.ERNNY4			Superseded Number THREE		Dated 15 OCT 2015		Effective Date	
FIX/NAVAID	LAT/LONG	C	FO/FB	LEG TYPE	TC	DIST (NM)	ALTITUDE	SPEED	REMARKS			
SWIIS	423130.21N / 0873034.20W	Y	FB	TF	181.66	12.01						
ERNNY	422019.39N / 0873203.06W	Y	FB	TF	185.61	11.23						
En Route Transition												
LGHRN	441647.00N / 0870738.00W	Y		IF					LGHRN.ERNNY4			
FGHRN	440608.00N / 0874809.00W	Y	FB	TF	250.17	31.04						
FAH VOR/DME	434607.63N / 0875055.57W	Y	FB	TF	185.74	20.10						
KOHLL	433816.97N / 0875029.01W	Y	FB	TF	177.65	07.85	FL180BFL210					
GURNN	433026.14N / 0874936.77W	Y	FB	TF	175.38	07.87	AT/BELOW FL180					
CHDRR	432010.89N / 0875219.44W	Y	FB	TF	190.92	10.44	AT 14000					
LYNNI	425004.57N / 0873453.20W	Y	FB	TF	156.90	32.70						
PHRLY	424330.57N / 0873005.93W	Y	FB	TF	151.73	07.45						
SWIIS	423130.21N / 0873034.20W	Y	FB	TF	181.66	12.01						
ERNNY	422019.39N / 0873203.06W	Y	FB	TF	185.61	11.23						
En Route Transition												
SPAHN	425327.02N / 0873748.57W	Y		IF			AT/BELOW 10000		SPAHN.ERNNY4			
LYNNI	425004.57N / 0873453.20W	Y	FB	TF	147.48	04.00						
PHRLY	424330.57N / 0873005.93W	Y	FB	TF	151.73	07.45						
SWIIS	423130.21N / 0873034.20W	Y	FB	TF	181.66	12.01						
ERNNY	422019.39N / 0873203.06W	Y	FB	TF	185.61	11.23						
En Route Transition												
STASH	414615.08N / 0861923.31W	Y		IF					STASH.ERNNY4			
TOWNE	415314.50N / 0863738.52W	Y	FB	TF	297.22	15.33						
PRADY	415841.28N / 0864535.05W	Y	FB	TF	312.61	08.05						
MUSKY	420911.83N / 0865613.65W	Y	FB	TF	323.02	13.16						
MINCE	420944.37N / 0870351.08W	Y	FB	TF	275.50	05.70	AT/BELOW 10000					
ERNNY	422019.39N / 0873203.06W	Y	FB	TF	296.96	23.46						

QUALITY  
17  
CHECKED

QUALITY  
17  
CHECKED

## STAR (DATA RECORD)

Arrival Name ERNNY RNAV	Number FOUR	STAR Computer Code ERNNY.ERNNY4	Superseded Number THREE	Dated 15 OCT 2015	Effective Date
----------------------------	----------------	------------------------------------	----------------------------	----------------------	----------------

FIX/NAVAID	LAT/LONG	C	FO/FB	LEG TYPE	TC	DIST (NM)	ALTITUDE	SPEED	REMARKS
<b>En Route Transition</b>									
YOLUR	420901.93N / 0863724.42W	Y		IF					YOLUR.ERNNY4
MUSKY	420911.83N / 0865613.65W	Y	FB	TF	270.78	14.00			
MINCE	420944.37N / 0870351.08W	Y	FB	TF	275.50	05.70	AT/BELOW 10000		
ERNNY	422019.39N / 0873203.06W	Y	FB	TF	296.96	23.46			

<b>Common Route</b>									
ERNNY	422019.39N / 0873203.06W	Y		IF					ERNNY.ERNNY4
PAPPI	421611.90N / 0873625.93W	Y	FB	TF	218.28	05.25			
TUBEZ	421051.31N / 0874202.89W	Y	FB	TF	218.03	06.78			

<b>Runway Transition</b>									
TUBEZ	421051.31N / 0874202.89W	Y		IF					
VULCN	420530.34N / 0874739.02W	Y	FB	TF	217.97	06.78			
KURKK	420530.61N / 0880137.92W	Y	FB	TF	270.10	10.41			
BAMBB	420527.50N / 0881631.34W	Y	FO	TF	269.82	11.09			
KORD:RWY4L/R, 9L/R, 10L/C, 15, 22L/R, 27L/R, 28L/C/R				FM	269.82				RECOMMENDED NAVAID: MZZ VOR/DME

<b>Runway Transition</b>									
TUBEZ	421051.31N / 0874202.89W	Y		IF					
MONKZ	415303.59N / 0874806.47W	Y	FB	TF	194.28	18.35			
JORJO	415304.14N / 0875918.78W	Y	FB	TF	270.13	08.37			
POSSM	415228.78N / 0881630.63W	Y	FO	TF	267.47	12.86			
KORD:RWY 10R				FM	267.47				RECOMMENDED NAVAID: MZZ VOR/DME

