

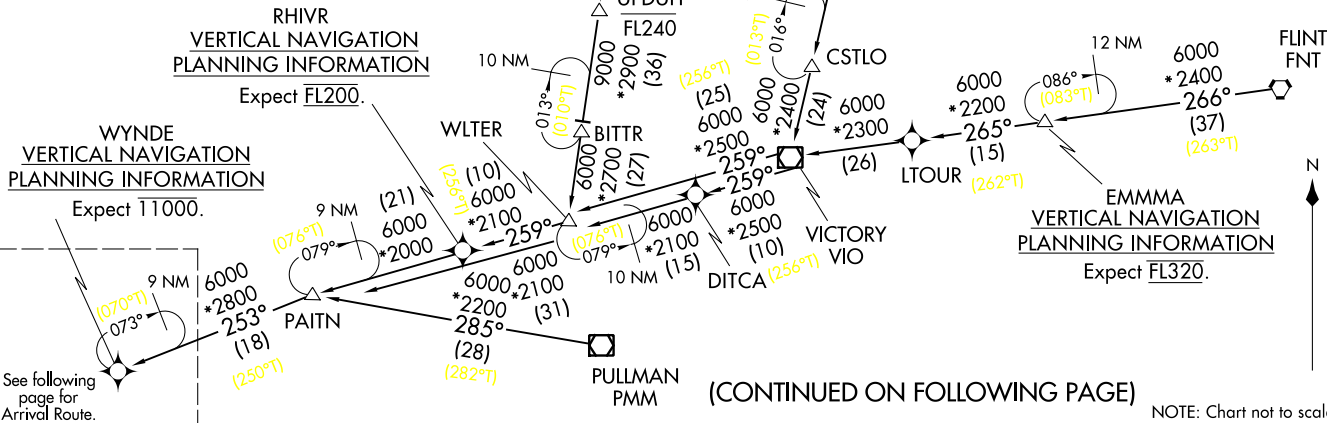
Flight Procedure Tracking Form		Action: FLIGHT CHECK	Task Type: STAR	Date Open: 08/21/2014	Task #: 2014082125137504002	Request #: 20140821251375
Procedure: STAR WYNDE (RNAV) EIGHT CHICAGO IL KORD			Airport ID: KORD	Airport: CHICAGO O'HARE INTL		Reimbursable #: NO
City: CHICAGO	ST: IL	GPS #:	Estimated Chart Date: 09/15/2016		FICO #: 1163866	
Fac ID: N/A		Fac. Type:		Specialist: PATRICK MULQUEEN		
Procedure Review						
	Rec'd	Rel'd	Full Name	Comments		
Lead:	10/23/2015	03/11/2016	JACOB POWERS	QUALITY		
QA:	03/11/2016	03/15/2016	ERIC HILL	4 3/18CTabaka		
Liaison:	03/15/2016	03/15/2016	MARY MCDONALD	CHECKED		
Procedure Comments:			Remark Type: INFORMATION			
DIGITAL PROCESS. CONTACT: JACOB POWERS 405-954-8702 3/17/2016 UPDATED COPY TO REMOVE VERTICAL NAVIGATION PLANNING NOTE AT WYNDE.						

ATIS
135.4 282.225
CHICAGO APP CON
119.0 393.1

EMMMA TRANSITION (EMMMA.WYNDE8)
FLINT TRANSITION (FNT.WYNDE8)
OBSTR TRANSITION (OBSTR.WYNDE8)
ODAXY TRANSITION (ODAXY.WYNDE8)
PULLMAN TRANSITION (PMM.WYNDE8)
SAULT STE MARIE TRANSITION (SSM.WYNDE8)
TRAVERSE CITY TRANSITION (TVC.WYNDE8)
UFDUH TRANSITION (UFDUH.WYNDE8)
VICTORY TRANSITION (VIO.WYNDE8)

NOTE: RADAR required.
NOTE: RNAV 1.
NOTE: DME/DME/IRU or GPS required.

PROTOTYPE-NOT FOR NAVIGATION




(CONTINUED ON FOLLOWING PAGE)

C-3, 04 FEB 2016 to 03 MAR 2016

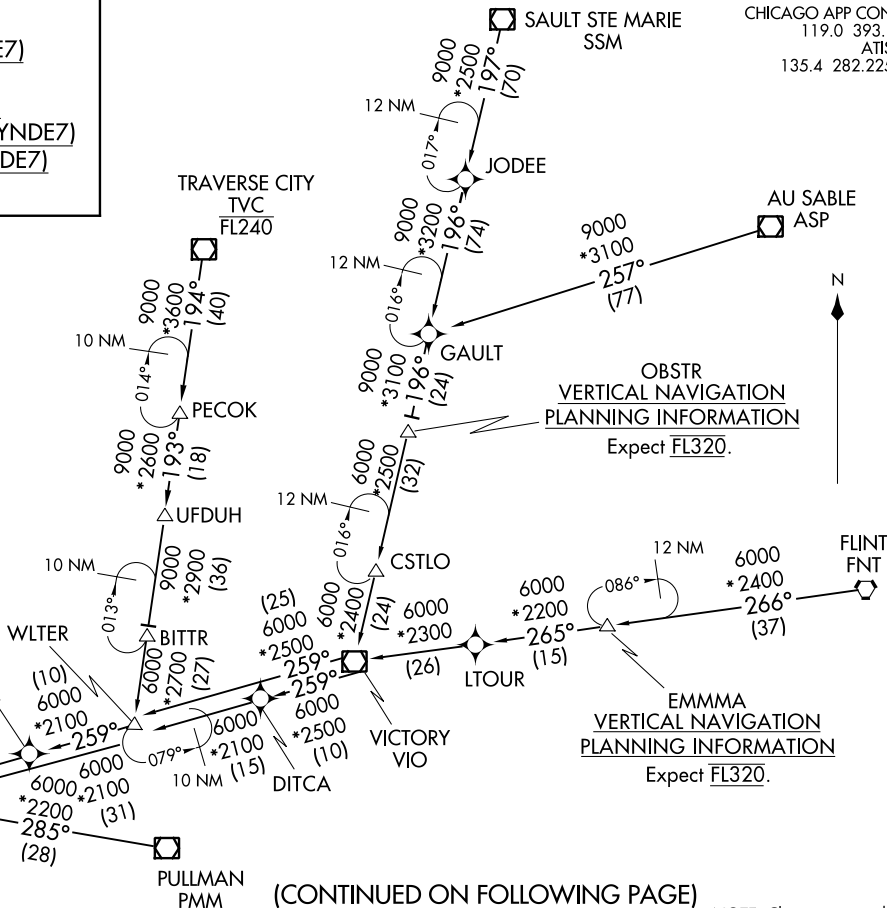
CHICAGO, ILLINOIS

ST-166 (FAA)

CHICAGO, ILLINOIS



NOTE: Chart not to scale.



ATIS
 135.4 282.225
 CHICAGO APP CON
 119.0 393.1

WYNDE
 VERTICAL NAVIGATION
 PLANNING INFORMATION
 Expect 11000.

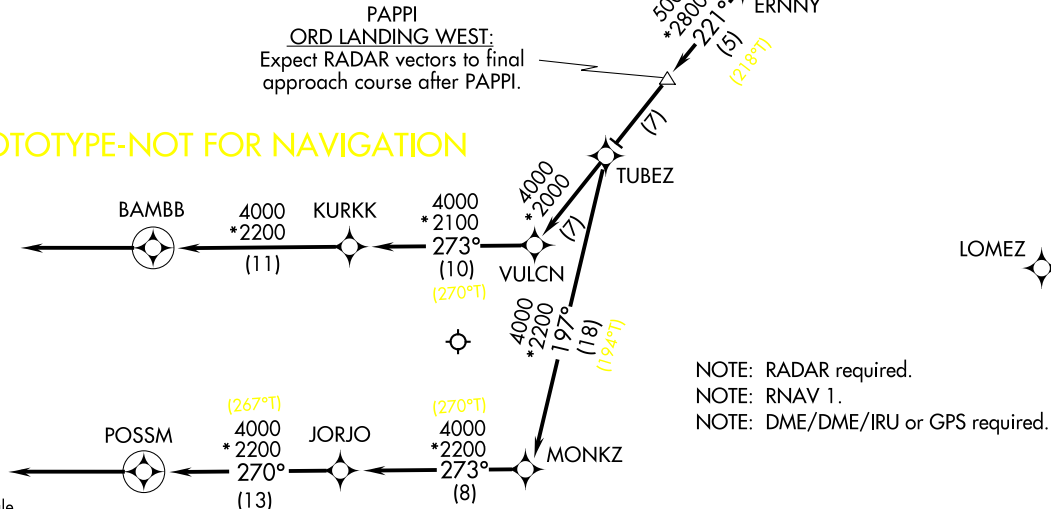
ARRIVAL ROUTE DESCRIPTION

From WYNDE on track 253° to FIYER, then on track 253° to ERNNY, then on track 221° to PAPPI, then on track 221° to TUBEZ.

LANDING RWYS 4L/R, 9L/R, 10L/C, 15, 22L/R, 27L/R, 28L/C/R:
 From TUBEZ on track 221° to VULCN, then on track 273° to KURKK, then on track 273° to BAMBB, then on track 273°. Expect RADAR vectors to final approach course.

LANDING RWY 10R: From TUBEZ on track 197° to MONKZ, then on track 273° to JORJO, then on track 270° to POSSM, then on track 270°. Expect RADAR vectors to final approach course.

PROTOTYPE-NOT FOR NAVIGATION



NOTE: RADAR required.
 NOTE: RNAV 1.
 NOTE: DME/DME/IRU or GPS required.

NOTE: Chart not to scale.

ARRIVAL ROUTE DESCRIPTION

From WYNDE on track 253° to FIYER, then on track 253° to ERNNY, then on track 221° to PAPPI, then on track 221° to TUBEZ.

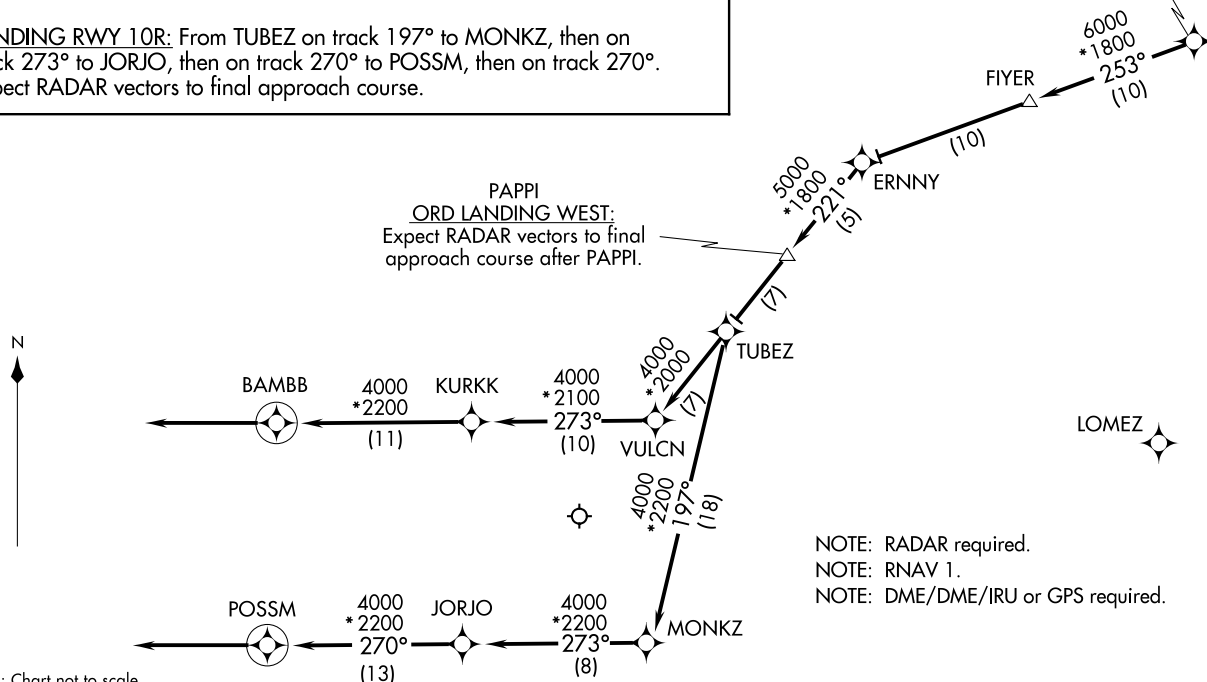
LANDING RWYS 4L/R, 9L/R, 10L/C, 14R, 22L/R, 27L/R, 28L/C/R:

From TUBEZ on track 221° to VULCN, then on track 273° to KURKK, then on track 273° to BAMBB, then on track 273°. Expect RADAR vectors to final approach course.

LANDING RWY 10R: From TUBEZ on track 197° to MONKZ, then on track 273° to JORJO, then on track 270° to POSSM, then on track 270°. Expect RADAR vectors to final approach course.

CHICAGO APP CON
119.0 393.1
ATIS
135.4 282.225

WYNDE
VERTICAL NAVIGATION
PLANNING INFORMATION
Expect 11000.

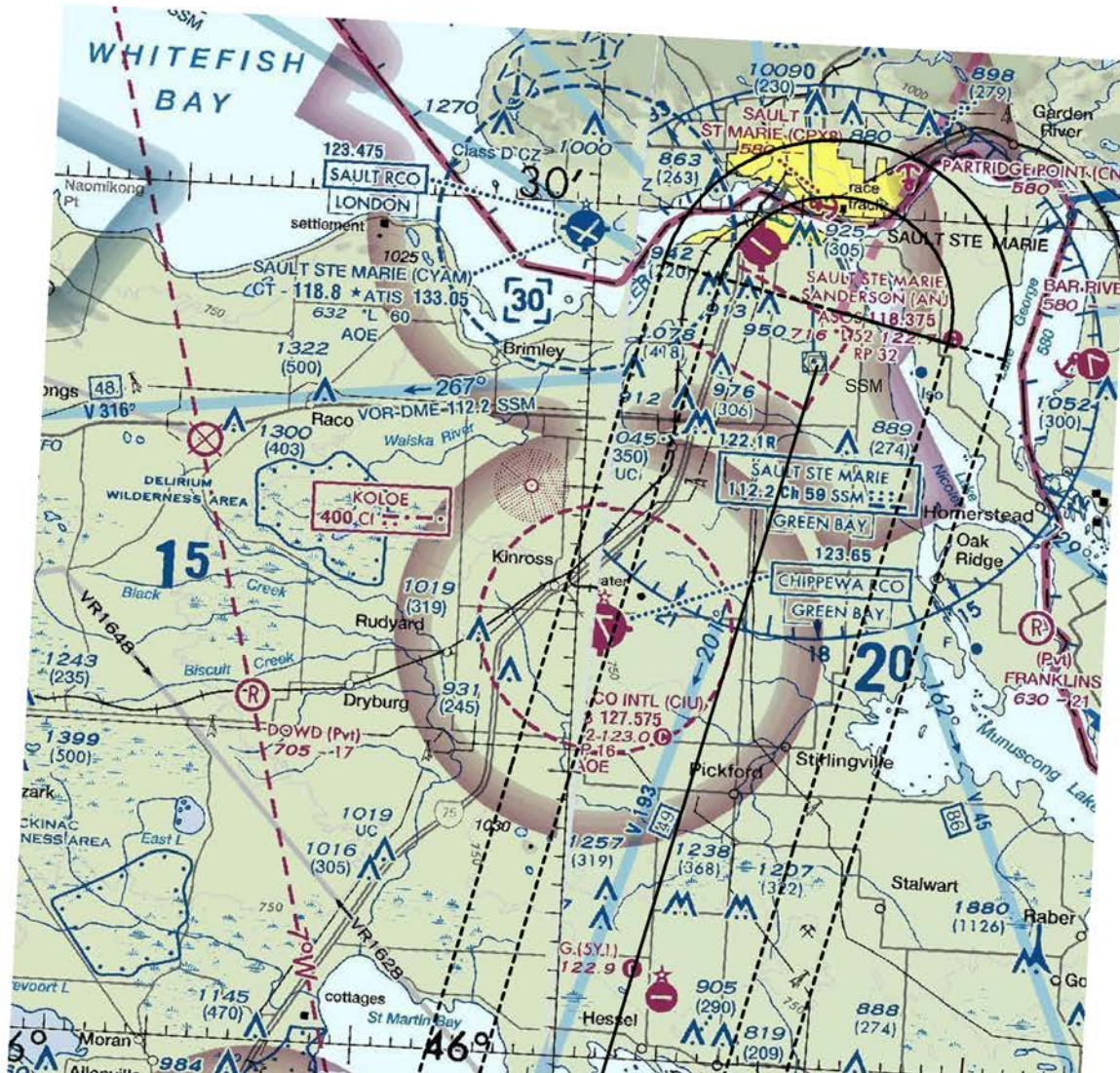


NOTE: Chart not to scale.

US DEPARTMENT of TRANSPORTATION - FEDERAL AVIATION ADMINISTRATION
STANDARD TERMINAL ARRIVAL (STAR)

Bearings, headings, courses, tracks and radials are magnetic. Elevations and altitudes are in feet. MSL. Altitudes are minimum altitudes unless otherwise indicated.
Distances are in nautical miles (NM). Graphic depiction attached.

Arrival Name	Number	STAR Computer Code	Superseded Number	Dated	Effective Date
WYNDE RNAV	EIGHT	WYNDE.WYNDE8	SEVEN	15 OCT 2015	
Graphic Depiction 1					

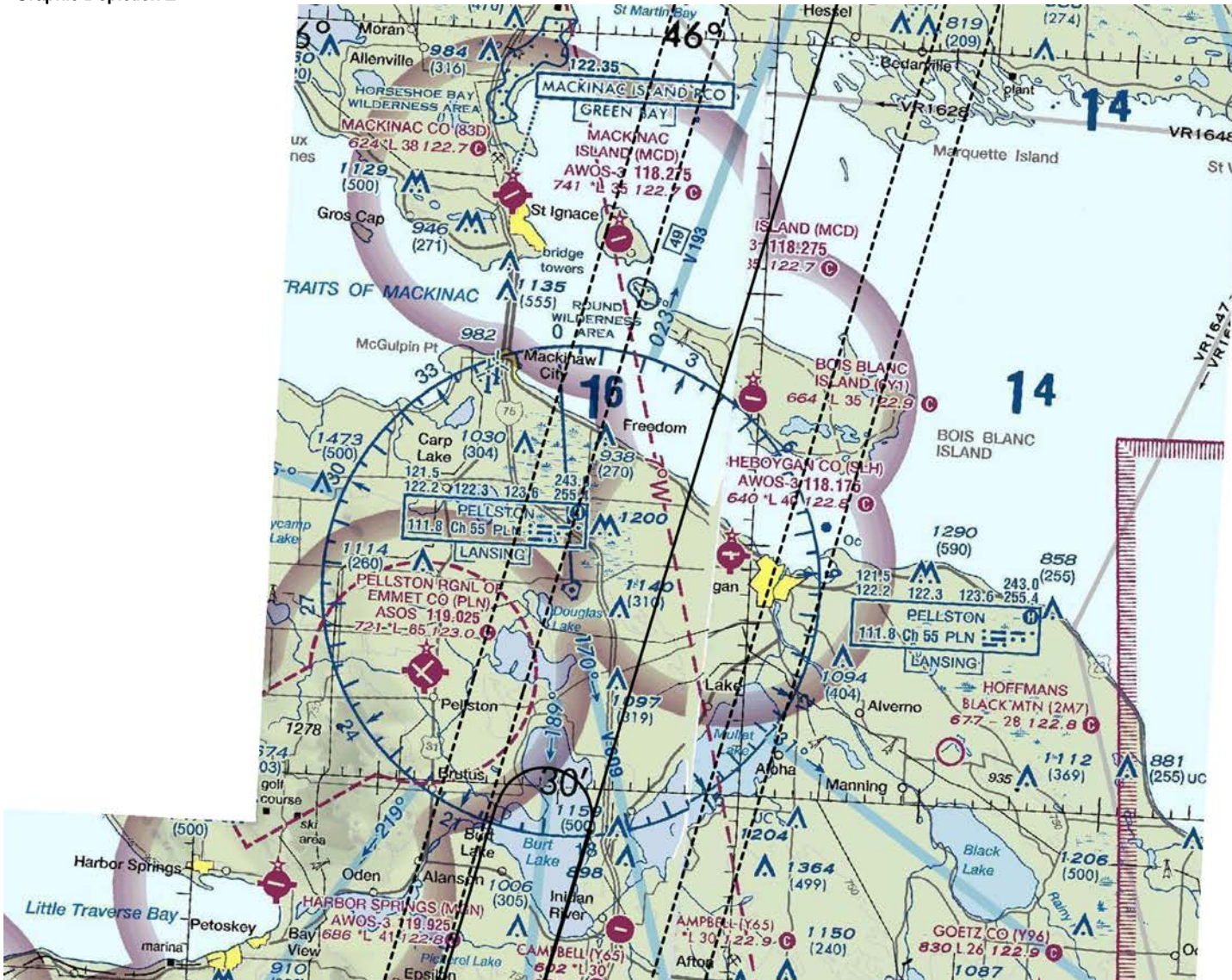


US DEPARTMENT of TRANSPORTATION - FEDERAL AVIATION ADMINISTRATION
STANDARD TERMINAL ARRIVAL (STAR)

Bearings, headings, courses, tracks and radials are magnetic. Elevations and altitudes are in feet. MSL. Altitudes are minimum altitudes unless otherwise indicated.
 Distances are in nautical miles (NM). Graphic depiction attached.

Arrival Name	Number	STAR Computer Code	Superseded Number	Dated	Effective Date
WYNDE RNAV	EIGHT	WYNDE.WYNDE8	SEVEN	15 OCT 2015	

Graphic Depiction 2

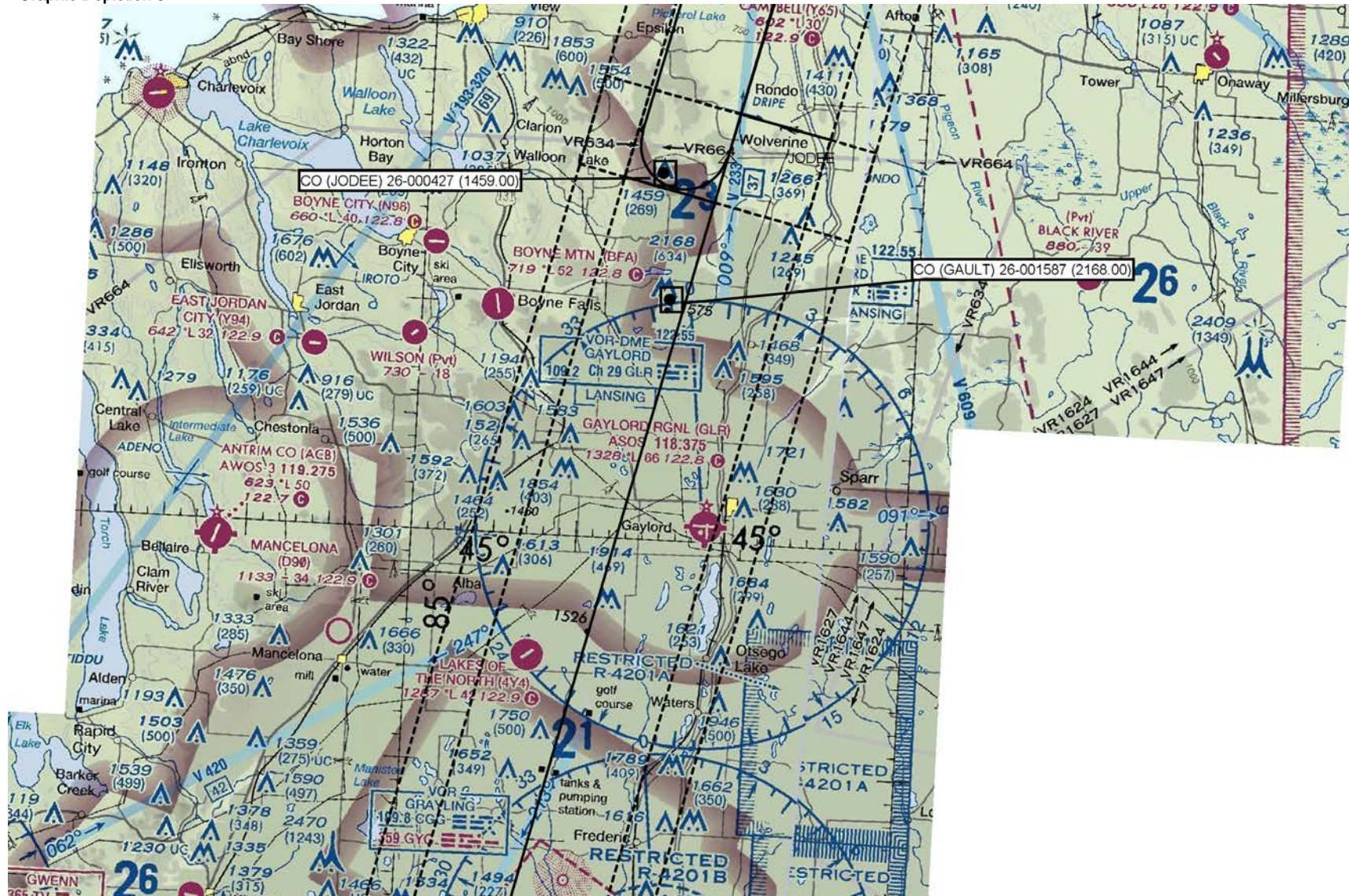


US DEPARTMENT of TRANSPORTATION - FEDERAL AVIATION ADMINISTRATION
STANDARD TERMINAL ARRIVAL (STAR)

Bearings, headings, courses, tracks and radials are magnetic. Elevations and altitudes are in feet. MSL. Altitudes are minimum altitudes unless otherwise indicated.
Distances are in nautical miles (NM). Graphic depiction attached.

Arrival Name	Number	STAR Computer Code	Superseded Number	Dated	Effective Date
WYNDE RNAV	EIGHT	WYNDE.WYNDE8	SEVEN	15 OCT 2015	

Graphic Depiction 3



US DEPARTMENT of TRANSPORTATION - FEDERAL AVIATION ADMINISTRATION
STANDARD TERMINAL ARRIVAL (STAR)

Bearings, headings, courses, tracks and radials are magnetic. Elevations and altitudes are in feet. MSL. Altitudes are minimum altitudes unless otherwise indicated.
Distances are in nautical miles (NM). Graphic depiction attached.

Arrival Name	Number	STAR Computer Code	Superseded Number	Dated	Effective Date
WYNDE RNAV	EIGHT	WYNDE.WYNDE8	SEVEN	15 OCT 2015	

Graphic Depiction 4

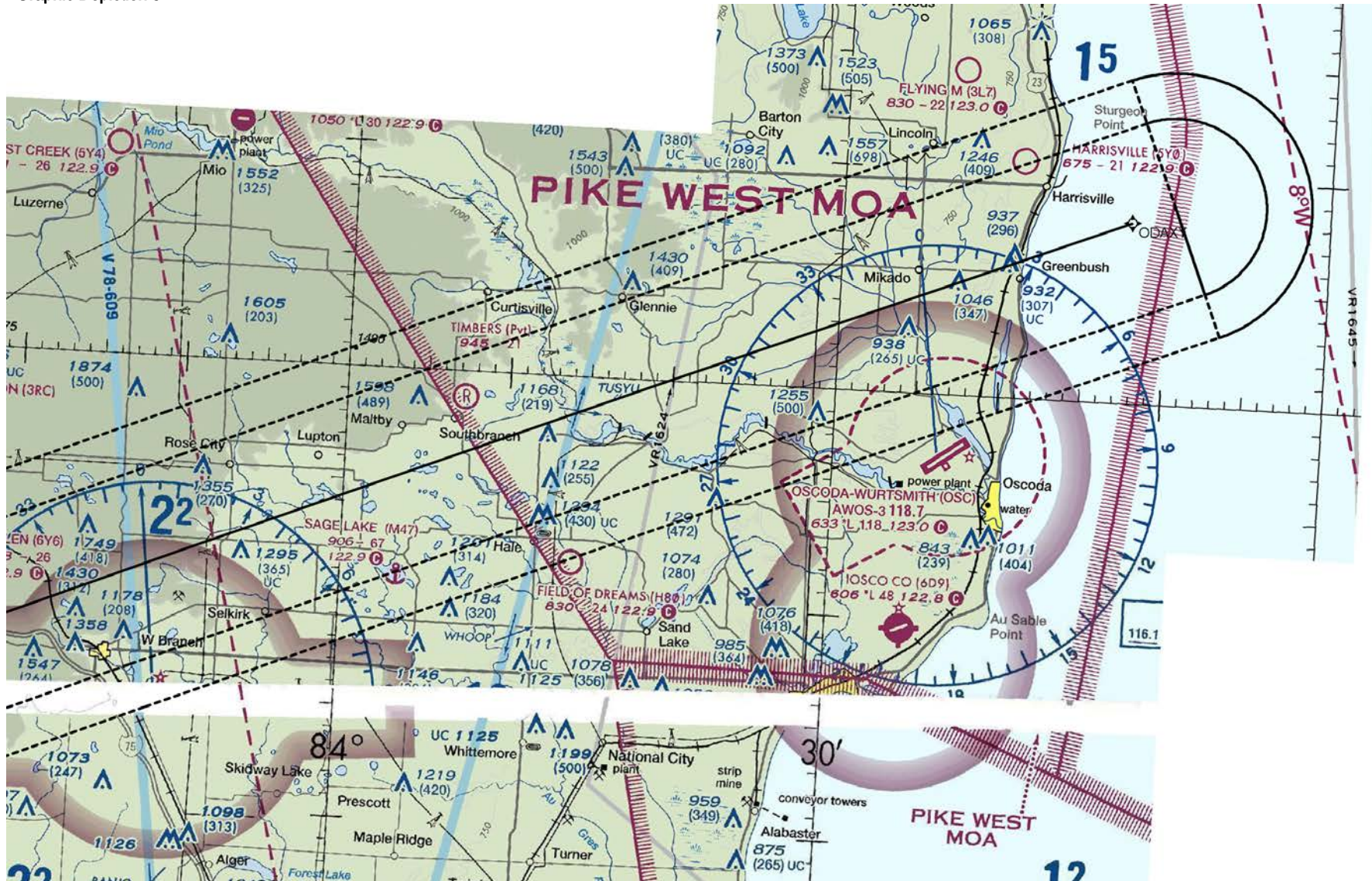


US DEPARTMENT of TRANSPORTATION - FEDERAL AVIATION ADMINISTRATION
STANDARD TERMINAL ARRIVAL (STAR)

Bearings, headings, courses, tracks and radials are magnetic. Elevations and altitudes are in feet. MSL. Altitudes are minimum altitudes unless otherwise indicated.
 Distances are in nautical miles (NM). Graphic depiction attached.

Arrival Name	Number	STAR Computer Code	Superseded Number	Dated	Effective Date
WYNDE RNAV	EIGHT	WYNDE.WYNDE8	SEVEN	15 OCT 2015	

Graphic Depiction 5



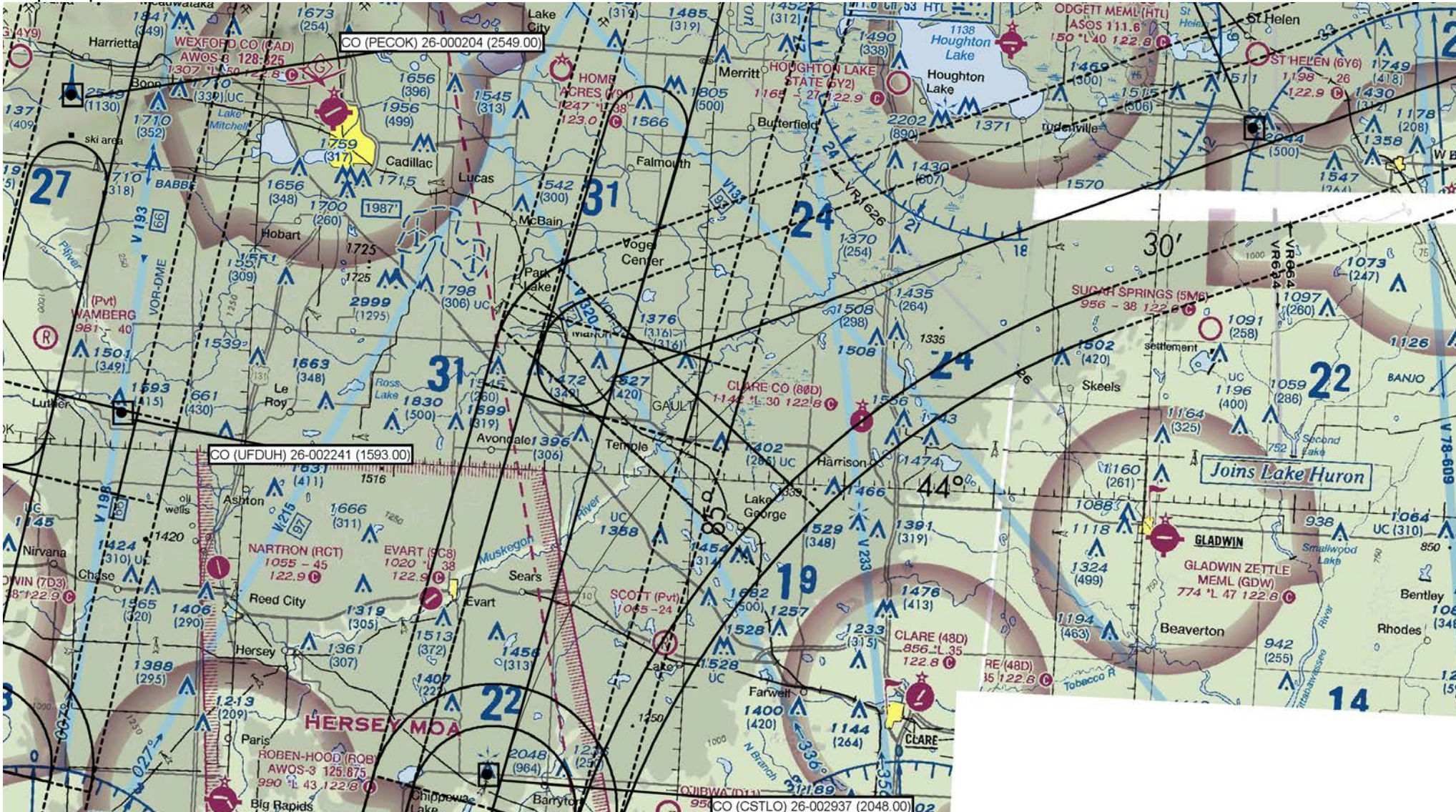
US DEPARTMENT of TRANSPORTATION - FEDERAL AVIATION ADMINISTRATION
STANDARD TERMINAL ARRIVAL (STAR)

Bearings, headings, courses, tracks and radials are magnetic. Elevations and altitudes are in feet. MSL. Altitudes are minimum altitudes unless otherwise indicated.

Distances are in nautical miles (NM). Graphic depiction attached.

Arrival Name	Number	STAR Computer Code	Superseded Number	Dated	Effective Date
WYNDE RNAV	EIGHT	WYNDE.WYNDE8	SEVEN	15 OCT 2015	

Graphic Depiction 6

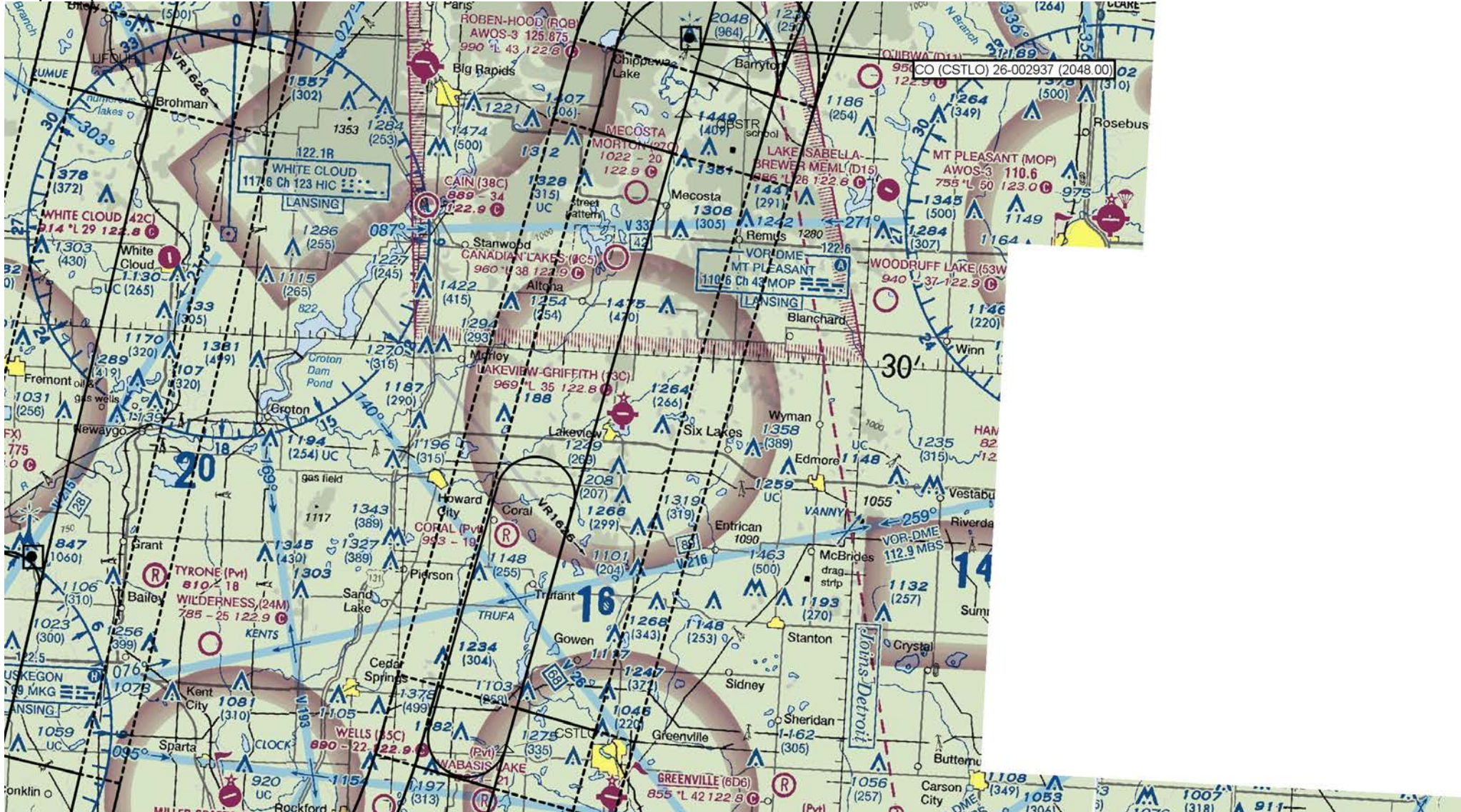


US DEPARTMENT of TRANSPORTATION - FEDERAL AVIATION ADMINISTRATION
STANDARD TERMINAL ARRIVAL (STAR)

Bearings, headings, courses, tracks and radials are magnetic. Elevations and altitudes are in feet. MSL. Altitudes are minimum altitudes unless otherwise indicated.
Distances are in nautical miles (NM). Graphic depiction attached.

Arrival Name	Number	STAR Computer Code	Superseded Number	Dated	Effective Date
WYNDE RNAV	EIGHT	WYNDE.WYNDE8	SEVEN	15 OCT 2015	

Graphic Depiction 7



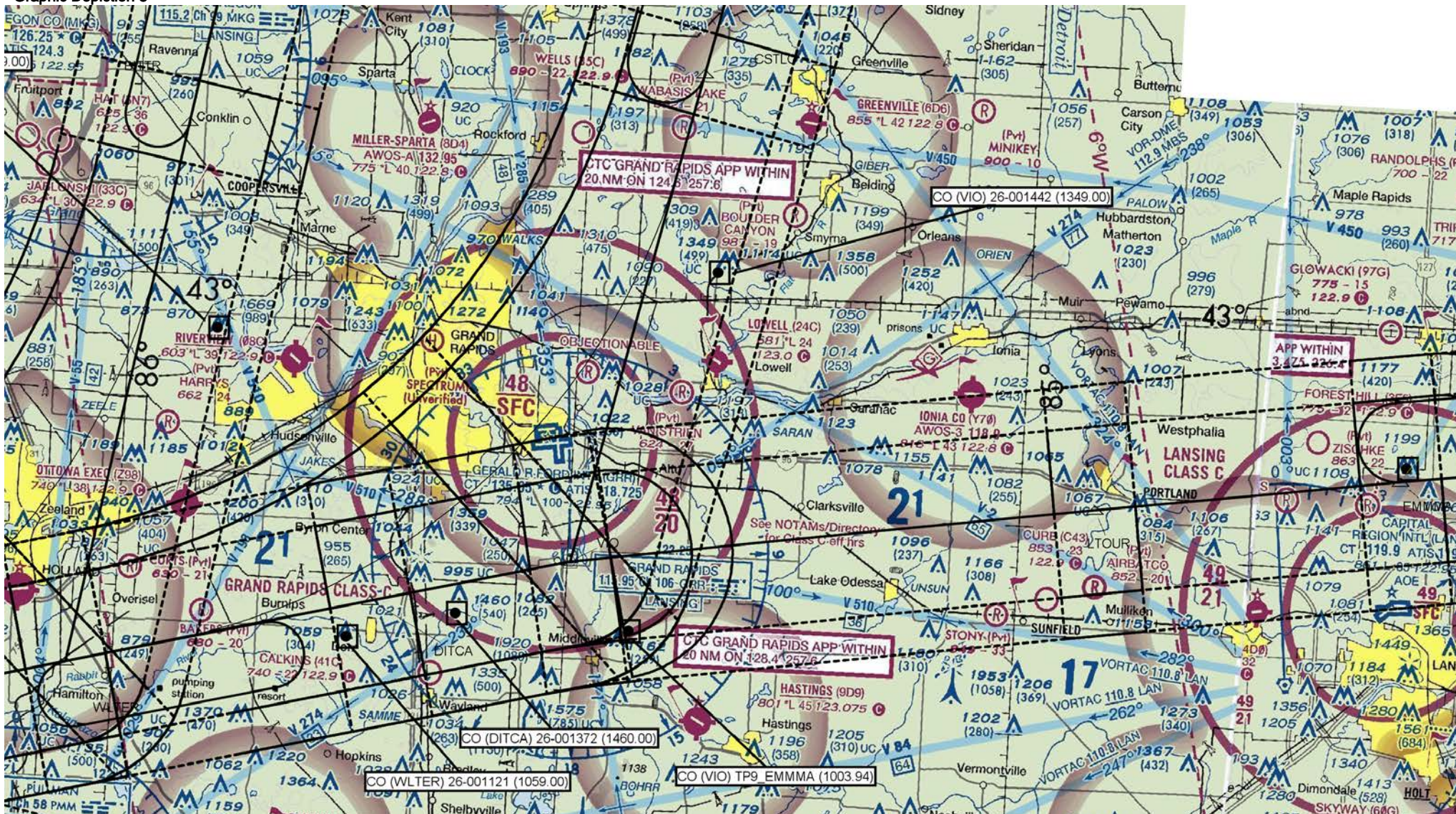
US DEPARTMENT of TRANSPORTATION - FEDERAL AVIATION ADMINISTRATION
STANDARD TERMINAL ARRIVAL (STAR)

Bearings, headings, courses, tracks and radials are magnetic. Elevations and altitudes are in feet. MSL. Altitudes are minimum altitudes unless otherwise indicated.

Distances are in nautical miles (NM). Graphic depiction attached.

Arrival Name	Number	STAR Computer Code	Superseded Number	Dated	Effective Date
WYNDE RNAV	EIGHT	WYNDE.WYNDE8	SEVEN	15 OCT 2015	

Graphic Depiction 8



US DEPARTMENT of TRANSPORTATION - FEDERAL AVIATION ADMINISTRATION
STANDARD TERMINAL ARRIVAL (STAR)

Bearings, headings, courses, tracks and radials are magnetic. Elevations and altitudes are in feet. MSL. Altitudes are minimum altitudes unless otherwise indicated.

Distances are in nautical miles (NM). Graphic depiction attached.

Arrival Name	Number	STAR Computer Code	Superseded Number	Dated	Effective Date
WYNDE RNAV	EIGHT	WYNDE.WYNDE8	SEVEN	15 OCT 2015	

Graphic Depiction 9



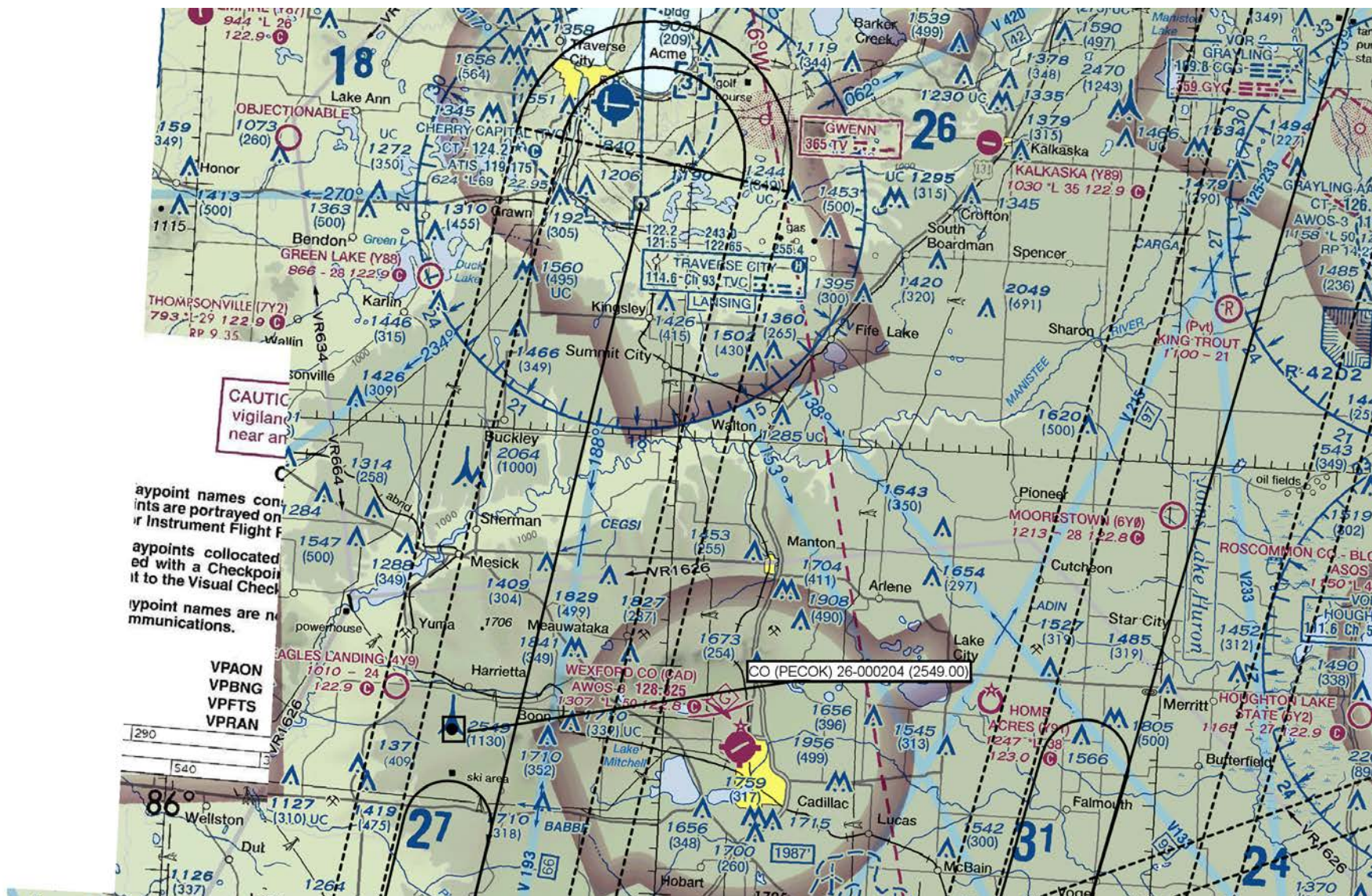
US DEPARTMENT of TRANSPORTATION - FEDERAL AVIATION ADMINISTRATION
STANDARD TERMINAL ARRIVAL (STAR)

Bearings, headings, courses, tracks and radials are magnetic. Elevations and altitudes are in feet. MSL. Altitudes are minimum altitudes unless otherwise indicated.

Distances are in nautical miles (NM). Graphic depiction attached.

Arrival Name	Number	STAR Computer Code	Superseded Number	Dated	Effective Date
WYNDE RNAV	EIGHT	WYNDE.WYNDE8	SEVEN	15 OCT 2015	

Graphic Depiction 10



US DEPARTMENT of TRANSPORTATION - FEDERAL AVIATION ADMINISTRATION
STANDARD TERMINAL ARRIVAL (STAR)

Bearings, headings, courses, tracks and radials are magnetic. Elevations and altitudes are in feet. MSL. Altitudes are minimum altitudes unless otherwise indicated.

Distances are in nautical miles (NM). Graphic depiction attached.

Arrival Name	Number	STAR Computer Code	Superseded Number	Dated	Effective Date
WYNDE RNAV	EIGHT	WYNDE.WYNDE8	SEVEN	15 OCT 2015	

Graphic Depiction 11

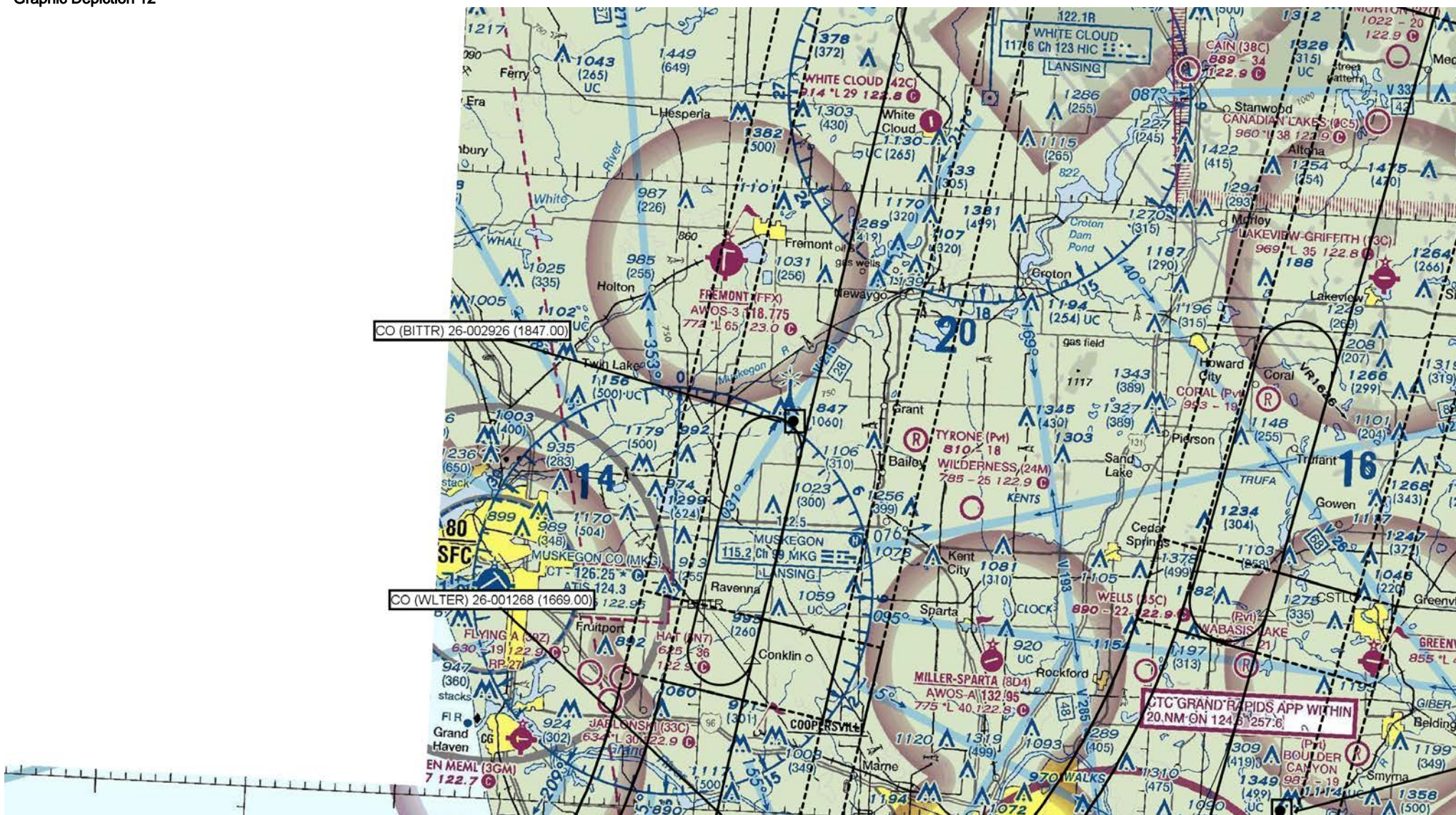


US DEPARTMENT of TRANSPORTATION - FEDERAL AVIATION ADMINISTRATION
STANDARD TERMINAL ARRIVAL (STAR)

Bearings, headings, courses, tracks and radials are magnetic. Elevations and altitudes are in feet. MSL. Altitudes are minimum altitudes unless otherwise indicated.

Distances are in nautical miles (NM). Graphic depiction attached.

Arrival Name	Number	STAR Computer Code	Superseded Number	Dated	Effective Date
WYNDE RNAV	EIGHT	WYNDE.WYNDE8	SEVEN	15 OCT 2015	
Graphic Depiction 12					



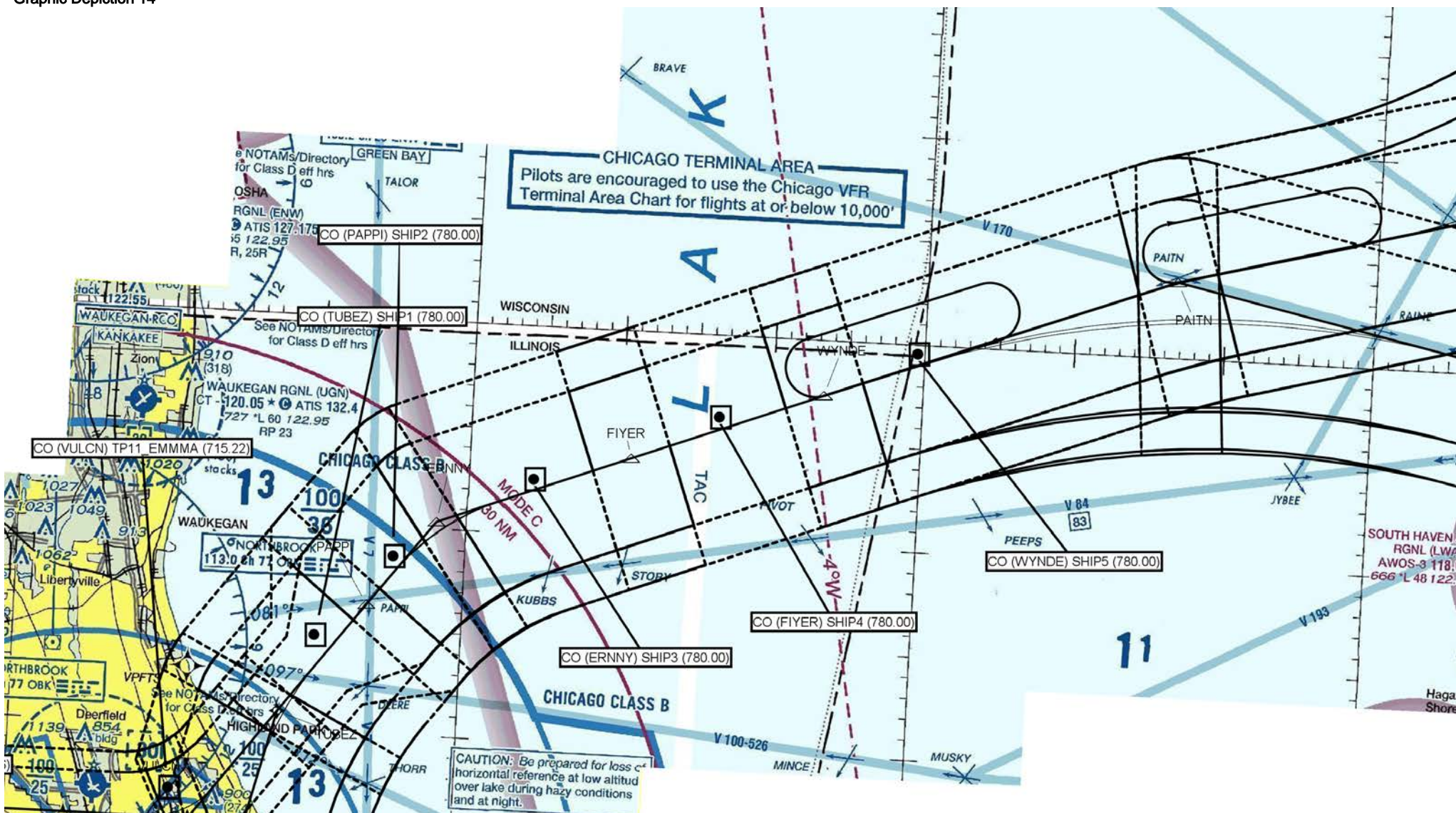
US DEPARTMENT of TRANSPORTATION - FEDERAL AVIATION ADMINISTRATION
STANDARD TERMINAL ARRIVAL (STAR)

Bearings, headings, courses, tracks and radials are magnetic. Elevations and altitudes are in feet. MSL. Altitudes are minimum altitudes unless otherwise indicated.

Distances are in nautical miles (NM). Graphic depiction attached.

Arrival Name	Number	STAR Computer Code	Superseded Number	Dated	Effective Date
WYNDE RNAV	EIGHT	WYNDE.WYNDE8	SEVEN	15 OCT 2015	

Graphic Depiction 14



US DEPARTMENT of TRANSPORTATION - FEDERAL AVIATION ADMINISTRATION
STANDARD TERMINAL ARRIVAL (STAR)

Bearings, headings, courses, tracks and radials are magnetic. Elevations and altitudes are in feet. MSL. Altitudes are minimum altitudes unless otherwise indicated.
Distances are in nautical miles (NM). Graphic depiction attached.

Arrival Name	Number	STAR Computer Code	Superseded Number	Dated	Effective Date
WYNDE RNAV	EIGHT	WYNDE.WYNDE8	SEVEN	15 OCT 2015	
Graphic Depiction 15					

