

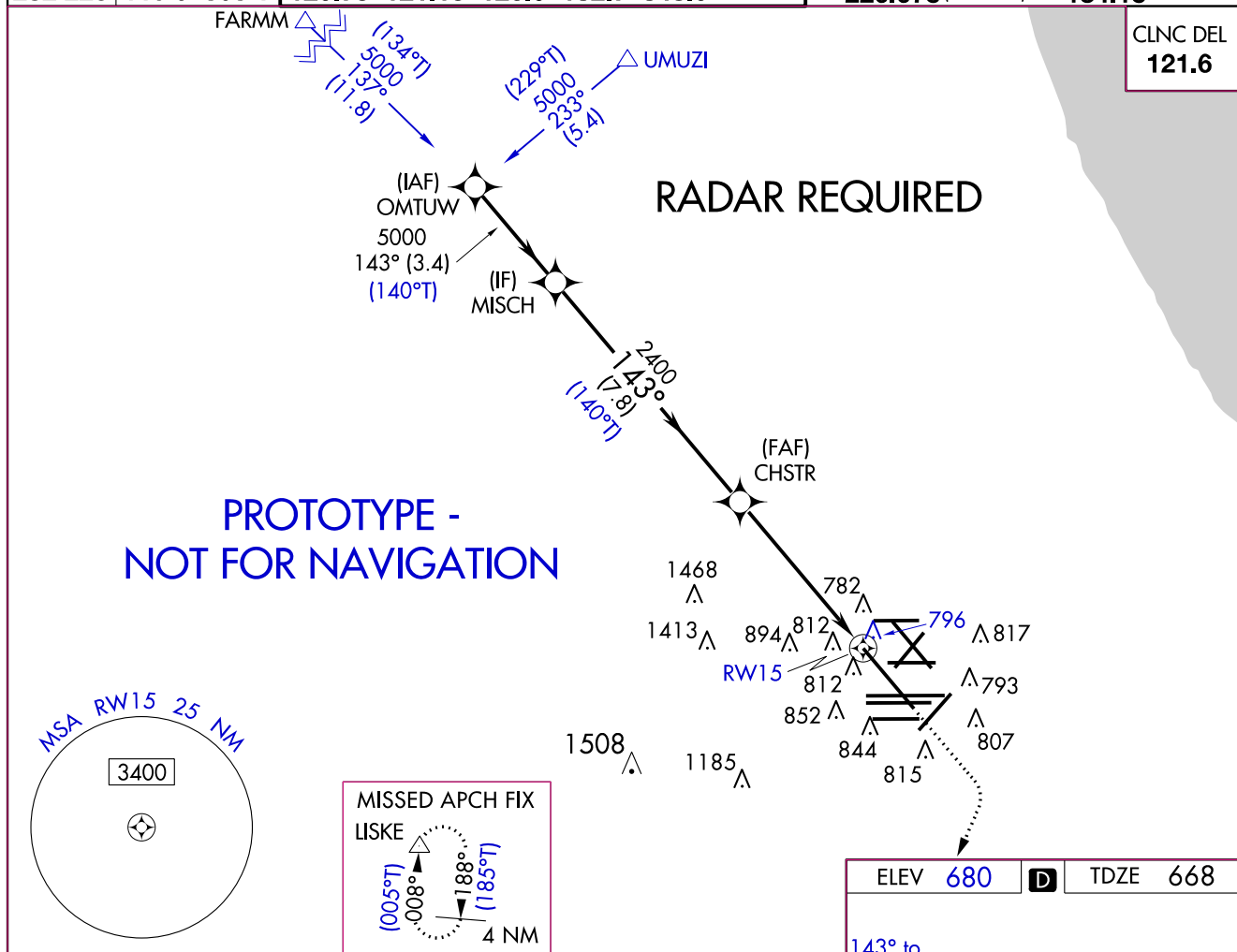
Flight Procedure Tracking Form		Action: FLIGHT CHECK	Task Type: IAP	Date Open: 08/21/2014	Task #: 2014082125137501004	Request #: 20140821251375
Procedure: RNAV (GPS) RWY 15 AMDT 2D			Airport ID: KORD	Airport: CHICAGO O'HARE INTL		Reimbursable #: NO
City: CHICAGO	ST: IL	GPS #:	Estimated Chart Date: 05/26/2016		FICO #:	
Fac ID: NOCHANGE		Fac. Type:			Specialist: KELLY DEAN	
Procedure Review						
	Rec'd	Rel'd	Full Name	Comments		
Lead:	10/23/2015					
QA:			J ZEDER 2/11/16			
Liaison:						
Procedure Comments:			ENROUTE-NON	Remark Type: INFORMATION		
ABREV AMDT FOR QUESTIONS, CONTACT JACOB POWERS 405-954-8702						

WAAS CH 93603 W15	APP CRS 143°	Rwy Idg TDZE Apt Elev	8650 668 680
---------------------------------------	------------------------	-----------------------------	-----------------------------------------

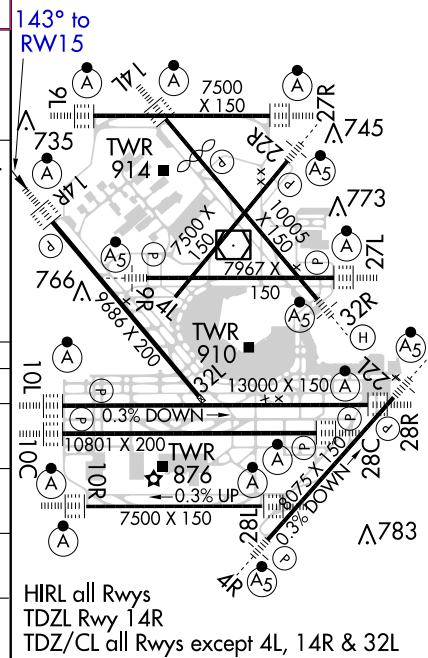
RNAV (GPS) RWY 15

CHICAGO-O'HARE INTL (ORD)

▼ For uncompensated Baro-VNAV systems, LNAV/VNAV NA below -22°C (-7°F) or above 35°C (95°F). DME/DME RNP-0.3 NA. For inop ALSF-2, increase LNAV/VNAV visibility to RVR 6000 all Cats and LNAV Cat C/D visibility to 1½ mile.				ALSF-2 	MISSED APPROACH: Climb to 1700 then climbing right turn to 4000 direct LISKE and hold.
ATIS 135.4 282.225	CHICAGO APP CON 119.0 393.1	O'HARE TOWERS 128.15 348.0 (Rwy 9L/27R) 133.0 348.0 (10R/28L) 120.75 121.15 126.9 132.7 348.0 (CENTER)			GND CON (TWR CENTER) 124.125 (TWR NORTH) 121.75 (OBND) 118.05 (TWR SOUTH) 121.9 (IBND) 226.675 (ALL TWRS) 134.15



VGSI and RNAV glidepath not coincident (VGSI Angle 3.00/TCH 67). 1700 4000 LISKE *LNAV only.			
OMTUW 5000 GP 3.00° TCH 56	MISCH 5000 143° 3.4 NM	CHSTR 2400 143° 7.8 NM 2400 1.4 NM to RWY 15	RWY 15 143° to RWY 15
CATEGORY	A	B	C
LPV DA	868/24		200 (200-½)
LNAV/VNAV DA	1068/45		400 (400-¾)
LNAV MDA	1180/24	512 (500-½)	1180/55 512 (600-1¼)
CIRCLING	1220-1	540 (600-1)	1220-1½ 540 (600-½) 1240-2 560 (600-2)



WAAS CH 93603 W14B	APP CRS 143°	Rwy Idg TDZE 668 Apt Elev 672
----------------------------------------	------------------------	---------------------------------------------------

RNAV (GPS) RWY 14R

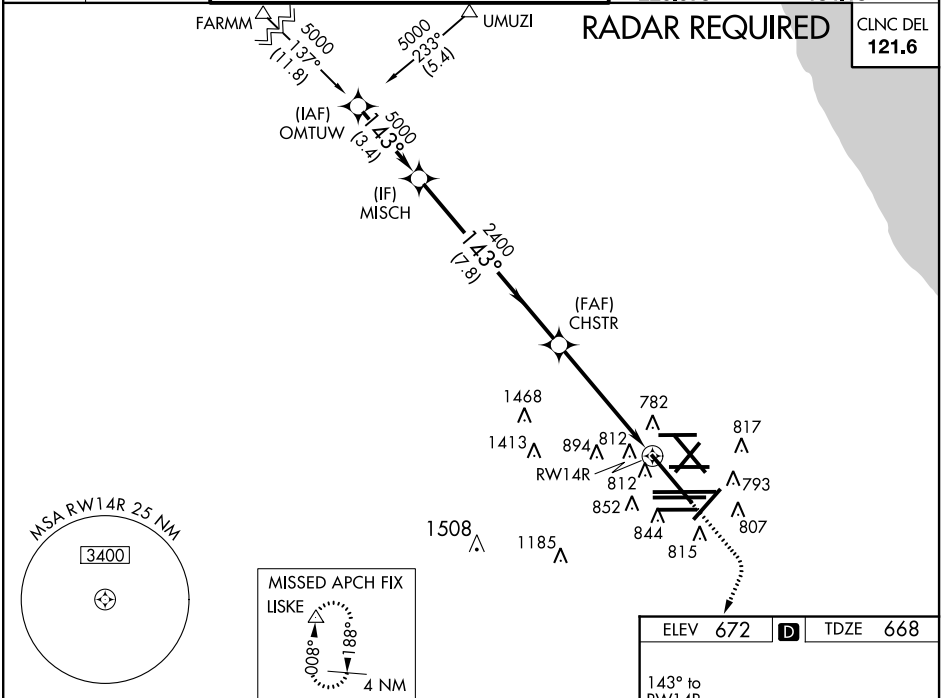
CHICAGO-O'HARE INTL (ORD)

▼ For uncompensated Baro-VNAV systems, LNAV/VNAV NA below -22°C (-7°F) or above 35°C (95°F). DME/DME RNP-0.3 NA. For inoperative ALSF-2, increase LNAV/VNAV visibility to RVR 6000 all Cats and LNAV Cat C/D visibility to 1 3/8 mile. Simultaneous approach authorized with Rwy 14L. LNAV procedure NA during simultaneous operations. Use of FD or AP providing RNAV track guidance required during simultaneous operations.

ALSF-2

MISSED APPROACH: Climb to 1700 then climbing right turn to 4000 direct LISKE and hold.


ATIS 135.4 282.225	CHICAGO APP CON 119.0 393.1	O'HARE TOWERS 128.15 348.0 (Rwy 9L/27R) 133.0 348.0 (10R/28L) 120.75 121.15 126.9 132.7 348.0 (CENTER)	GND CON 124.125 (TWR NORTH) 118.05 (TWR SOUTH) 226.675 (ALL TWRs)	(TWR CENTER) 121.75 (OBND) 121.9 (BND) 134.15
----------------------------------------	------------------------------------------	--------------------------------------------------------------------------------------------------------------------------------	-------------------------------------------------------------------------------------------	-----------------------------------------------------------------------------



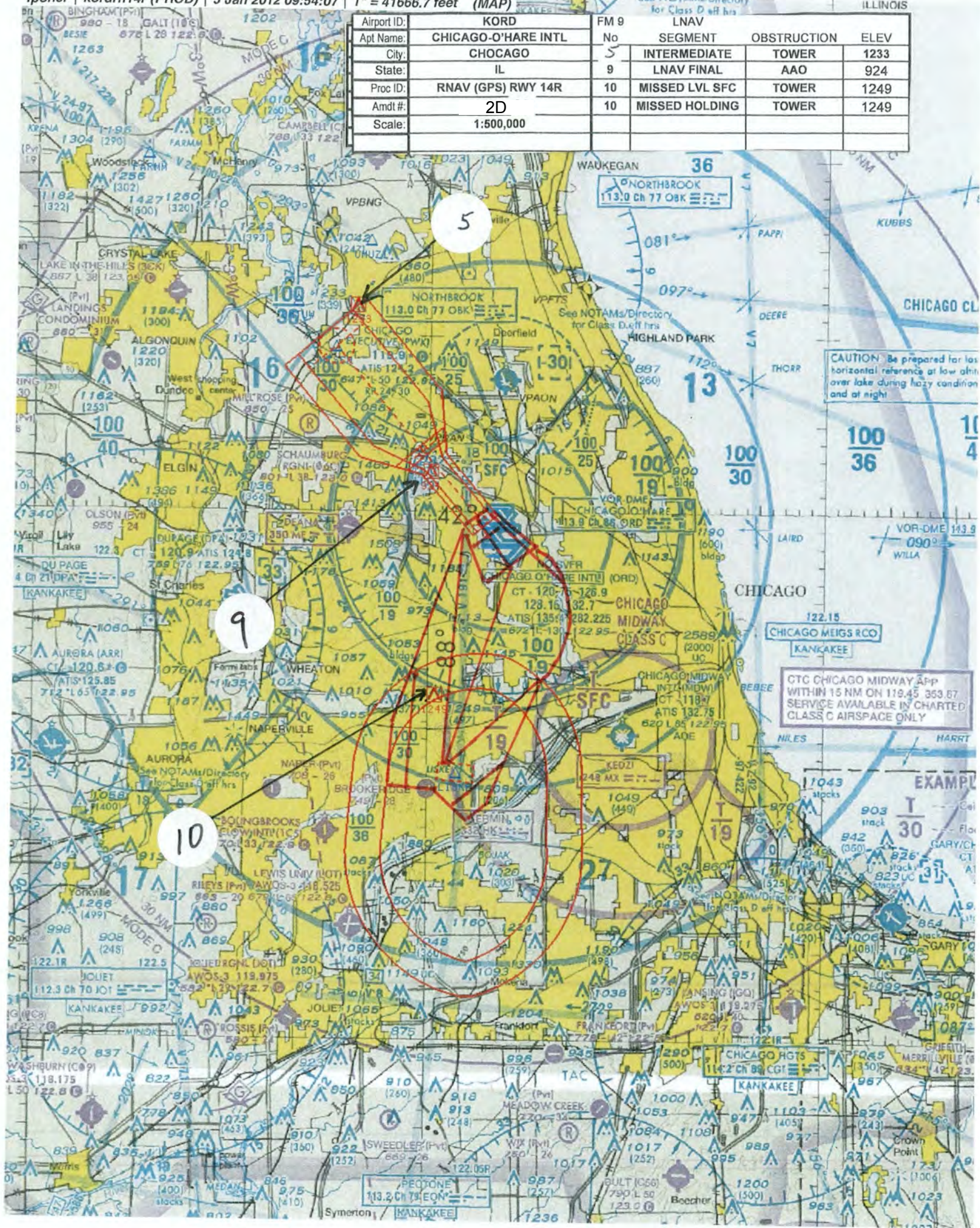
VGSi and RNAV glidepath not coincident (VGSi Angle 3.00/TCH 67).					1700	4000	LISKE
OMTUW MISCH CHSTR RWY 14R					*LNAV only.		
GP 3.00° TCH 56							
5000 143° 5000 143° 2400 1.4 NM to RWY 14R							
3.4 NM 7.8 NM 3.8 NM 1.4 NM							
CATEGORY	A	B	C	D			
LPV DA	868/24		200 (200-1/2)				
LNAV/VNAV DA	1068/45		400 (400-7/8)				
LNAV MDA	1180/24	512 (600-1/2)	1180/55	512 (600-1 1/4)			
CIRCLING	1220-1	548 (600-1)	1220-1 1/2	1240-2			
		548 (600-1/2)	548 (600-1/2)	568 (600-2)			

EC-3, 10 DEC 2015 to 07 JAN 2016

EC-3, 10 DEC 2015 to 07 JAN 2016



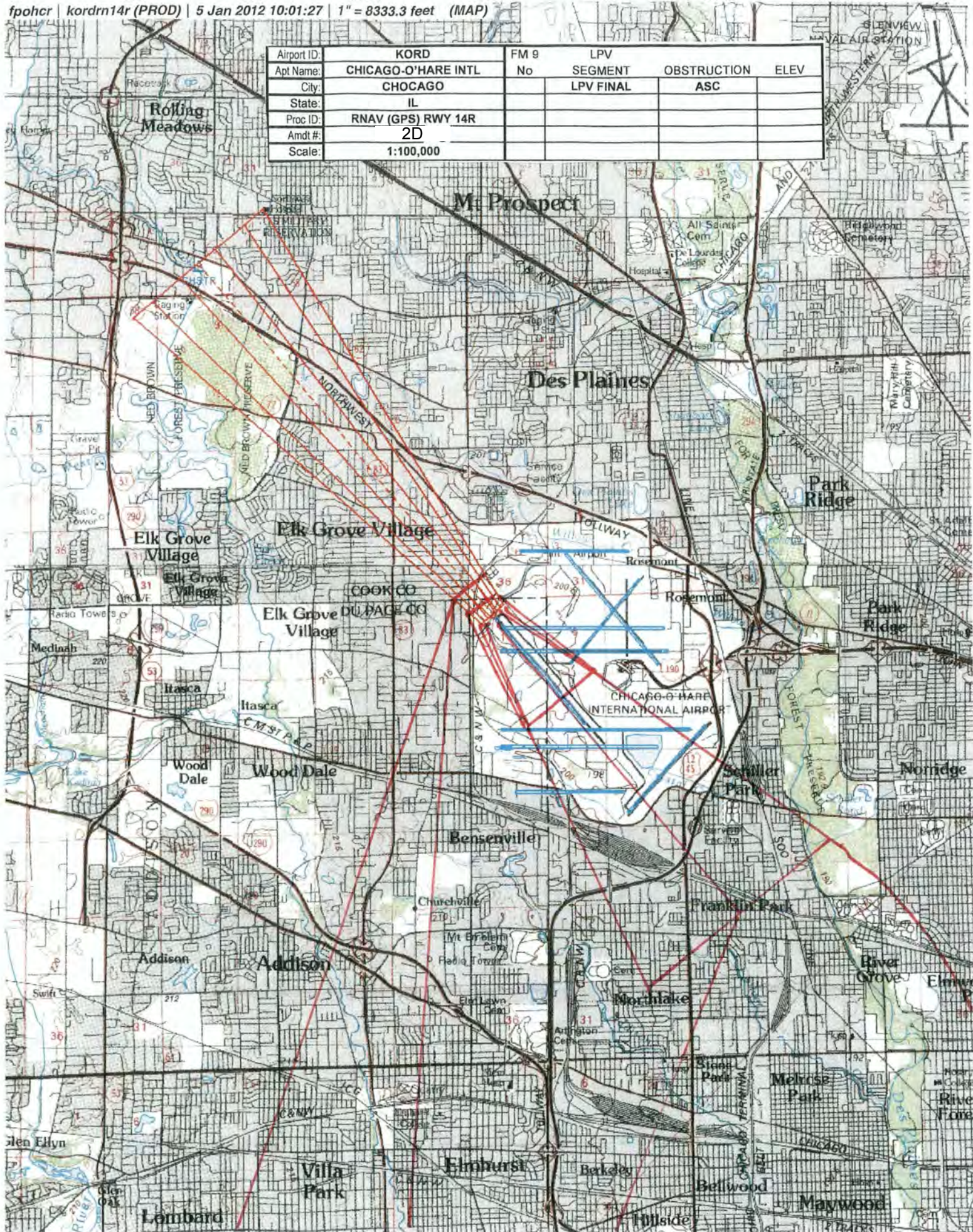
Airport ID: KORD		FM 9 LNAV			
Apt Name:	CHICAGO-O'HARE INTL	No	SEGMENT	OBSTRUCTION	ELEV
City:	CHICAGO	5	INTERMEDIATE	TOWER	1233
State:	IL	9	LNAV FINAL	AAO	924
Proc ID:	RNAV (GPS) RWY 14R	10	MISSED LVL SFC	TOWER	1249
Amdt #:	2D	10	MISSED HOLDING	TOWER	1249
Scale:	1:500,000				



NM 1 2 3 4 5 6 7 8 9 10
FT 8000 16000 24000 32000 40000 48000 56000 64000

fpohcr | kordrn14r (PROD) | 5 Jan 2012 10:01:27 | 1" = 8333.3 feet (MAP)

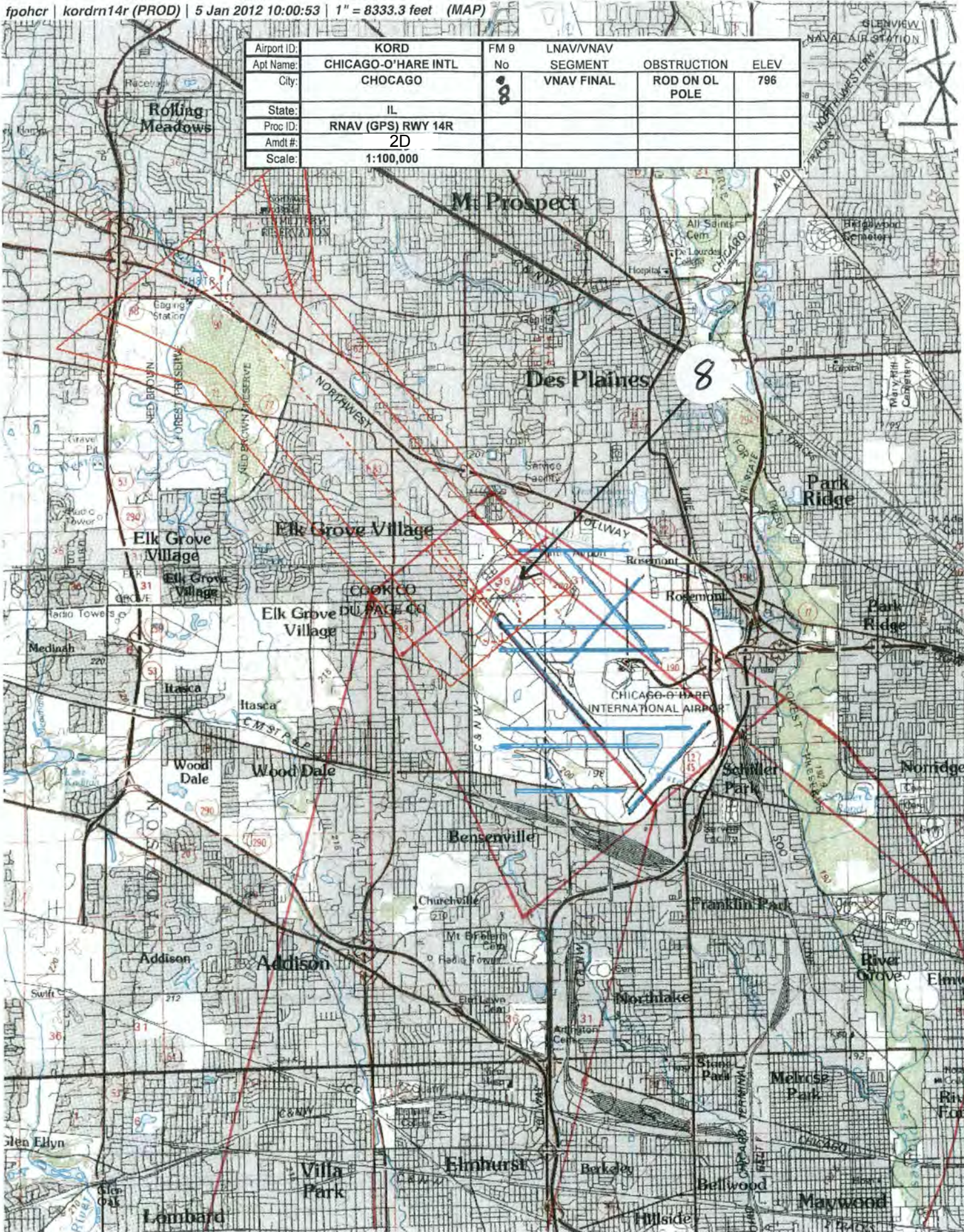
Airport ID:	KORD	FM 9	LPV		
Apt Name:	CHICAGO-O'HARE INTL	No	SEGMENT	OBSTRUCTION	ELEV
City:	CHOCAGO		LPV FINAL	ASC	
State:	IL				
Proc ID:	RNAV (GPS) RWY 14R				
Amdt #:	2D				
Scale:	1:100,000				



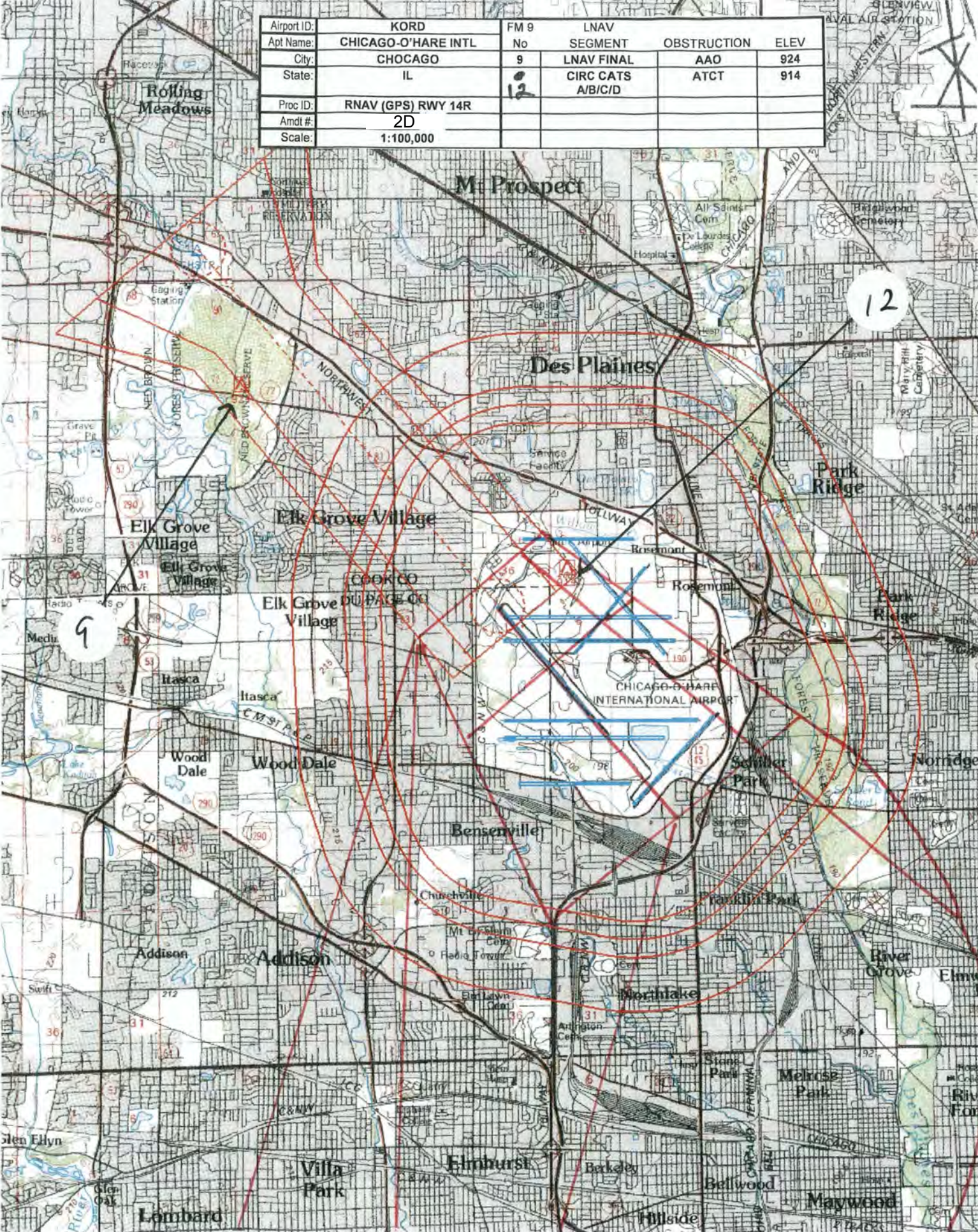
NM 1 2 3 4 5 6 7 8 9 10
FT 8000 16000 24000 32000 40000 48000 56000 6400

fpohcr | kordn14r (PROD) | 5 Jan 2012 10:00:53 | 1" = 8333.3 feet (MAP)

Airport ID:	KORD	FM 9	LNAV/VNAV	OBSTRUCTION	ELEV
Apt Name:	CHICAGO-O'HARE INTL	No	SEGMENT	ROD ON OL	796
City:	CHICAGO	8	VNAV FINAL	POLE	
State:	IL				
Proc ID:	RNAV (GPS) RWY 14R				
Amdt #:	2D				
Scale:	1:100,000				



Airport ID:	KORD	FM 9	LNAV		
Apt Name:	CHICAGO-O'HARE INTL	No	SEGMENT	OBSTRUCTION	ELEV
City:	CHOCAGO	9	LNAV FINAL	AAO	924
State:	IL	12	CIRC CATS	ATCT	914
			A/B/C/D		
Proc ID:	RNAV (GPS) RWY 14R				
Amdt #:	2D				
Scale:	1:100,000				



RG

FLIGHT INSPECTION PROCEDURE CONTROL FORM							
PROCEDURE: RNAV (GPS) RWY 14R 2.6mi		AIRPORT NAME: CHICAGO O'HARE INTL		AIRPORT ID: KORD	SPECIAL CONTROL NO: BG-3-155-12		
CITY: CHICAGO				ST: IL	ORIG CHART DATE: 05/31/12		
FAC ID: KORD14R.02	DFL TYPE: PROC'S	THIRD PARTY: <input type="checkbox"/> YES	EST. TIME ON SITE: 00		REIMB. NUMBER:		
PREFLIGHT NOTES							
REVIEWER:			DATE:				
COMMENTS:		ASSOCIATED FACILITIES:		CHECK ONE:			
				<input type="checkbox"/> FLT CK REQ <input type="checkbox"/> NPCR <input type="checkbox"/> REJECT			
					YES	NO	
				VIDEO MAP REQUIRED?			
				ESV(S) ATTACHED?			
				GROUND MAINTENANCE?			
				ARINC CODING 424?		X	
POST FLIGHT							
INSPECTION DATE: 04/03/2012	CREW #: VN218	N #: 55	CHECK ONE:			NOTAM ISSUED?	
			<input type="checkbox"/> SAT <input type="checkbox"/> SAT W/CHANGES <input checked="" type="checkbox"/> SAT / GOLD <input type="checkbox"/> UNSAT			<input type="checkbox"/> YES	
FLIGHT INSPECTOR SIGNATURE: Anthony D. Valleria				PRINTED NAME: Anthony D. Valleria			
FLIGHT INSPECTOR REMARKS:							

VN 8200-6-1