

<b>Flight Procedure Tracking Form</b>		<b>Action:</b> CANCELLATION	<b>Task Type:</b> IAP	<b>Date Open:</b> 08/21/2014	<b>Task #:</b> 2014082125137501002	<b>Request #:</b> 20140821251375
<b>Procedure:</b> ILS OR LOC RWY 14L AMDT 29D			<b>Airport ID:</b> KORD	<b>Airport:</b> CHICAGO O'HARE INTL		<b>Reimbursable #:</b> NO
<b>City:</b> CHICAGO	<b>ST:</b> IL	<b>GPS #:</b>	<b>Estimated Chart Date:</b> 05/26/2016		<b>FICO #:</b>	
<b>Fac ID:</b> N/A		<b>Fac. Type:</b>		<b>Specialist:</b> KELLY DEAN		
<b>Procedure Review</b>						
	<b>Rec'd</b>	<b>Rel'd</b>	<b>Full Name</b>	<b>Comments</b>		
<b>Lead:</b>	10/23/2015					
<b>QA:</b>			J ZEDER 02/10/16			
<b>Liaison:</b>						
<b>Procedure Comments:</b>			ENROUTE-NON			
			<b>Remark Type:</b> INFORMATION			
POC FOR QUESTIONS: JACOB POWERS 405-954-8702						

LOC/DME I-OHA	APP CRS	Rwy Idg	8007
<b>110.9</b>	<b>143°</b>	TDZE	<b>653</b>
Chan 46		Apt Elev	<b>672</b>

ILS or LOC RWY 14L

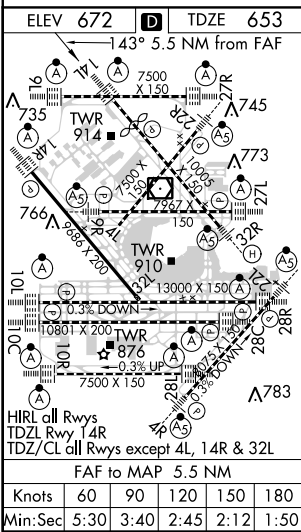
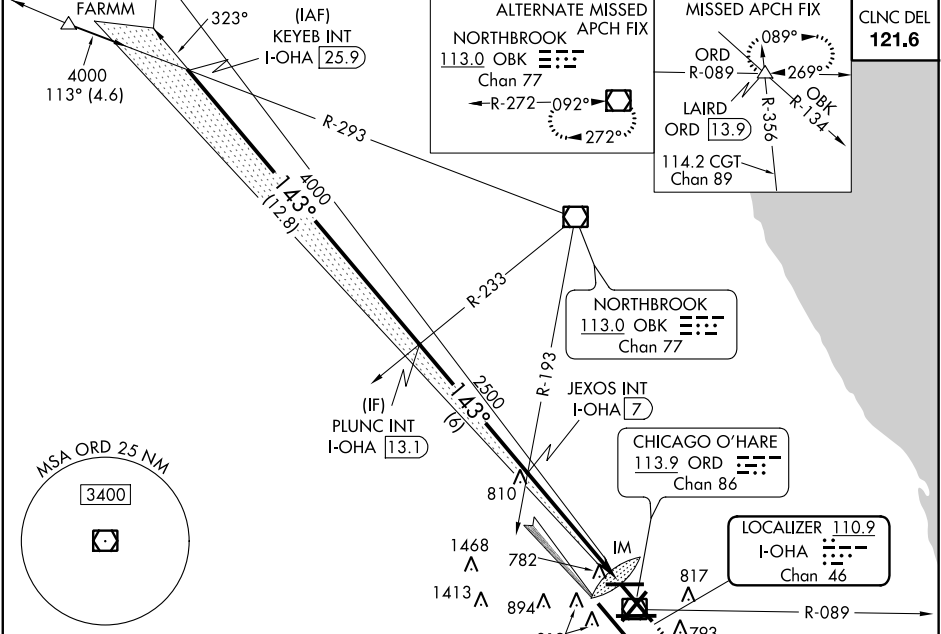
CHICAGO-O'HARE INTL (ORD)

Simultaneous approach authorized with Rwy 14R.

ALSF-2

MISSED APPROACH: Climb to 1200 then climbing left turn to 4000 via heading 059° and ORD R-089 to LAIRD INT and hold, continue climb-in-hold to 4000.

ATIS	CHICAGO APP CON	O'HARE TOWERS	GND CON	(TWR CENTER)
135.4		128.15 348.0 (Rwy 9L/27R)	124.125 (TWR NORTH)	121.75 (OBND)
282.225	119.0 393.1	133.0 348.0 (10R/28L)	118.05 (TWR SOUTH)	121.9 (IBND)
		120.75 121.15 126.9 132.7 348.0 (CENTER)	226.675 (ALL TWRs)	134.15



Procedure Turn NA	VGSI and ILS glidepath not coincident (VGSI Angle 3.00/TCH 75).				<div><div>1200</div><div>↑</div></div> <div><div>4000</div><div>hdg 059°</div></div> <div><div>ORD</div><div>R-089</div></div> <div><div>LAIRD</div><div>△</div></div>
	<div><div>KEYEB INT</div><div>I-OHA 25.9</div></div> <div><div>PLUNC INT</div><div>I-OHA 13.1</div></div> <div><div>JEXOS INT</div><div>I-OHA 7</div></div> <div><div>I-OHA 2.8</div></div> <div><div>IM</div><div>I-OHA 1.5</div></div> <div><div>GS 3.00°</div><div>TCH 58</div></div> <div><div>4000</div><div>143°</div><div>4000</div><div>143°</div><div>2500</div><div>2500</div></div> <div><div>12.8 NM</div><div>6 NM</div><div>4.2 NM</div><div>1.2</div><div>0.1</div></div>				
CATEGORY	A		B	C	D
S-ILS 14L	853/18 200 (200-½)				
S-LOC 14L	1140/24	487 (500-½)	1140/40 487 (500-¾)	1140/50 487 (500-1)	
CIRCLING	1220-1	548 (600-1)	1220-½ 548 (600-½)	1240-2 568 (600-2)	

EC-3, 10 DEC 2015 to 07 JAN 2016

EC-3, 10 DEC 2015 to 07 JAN 2016

LOC/DME I-OHA	APP CRS	Rwy Idg	8007
<b>110.9</b>	<b>143°</b>	TDZE	<b>653</b>
Chan 46		Apt Elev	<b>672</b>

ILS RWY 14L (CAT II & III)

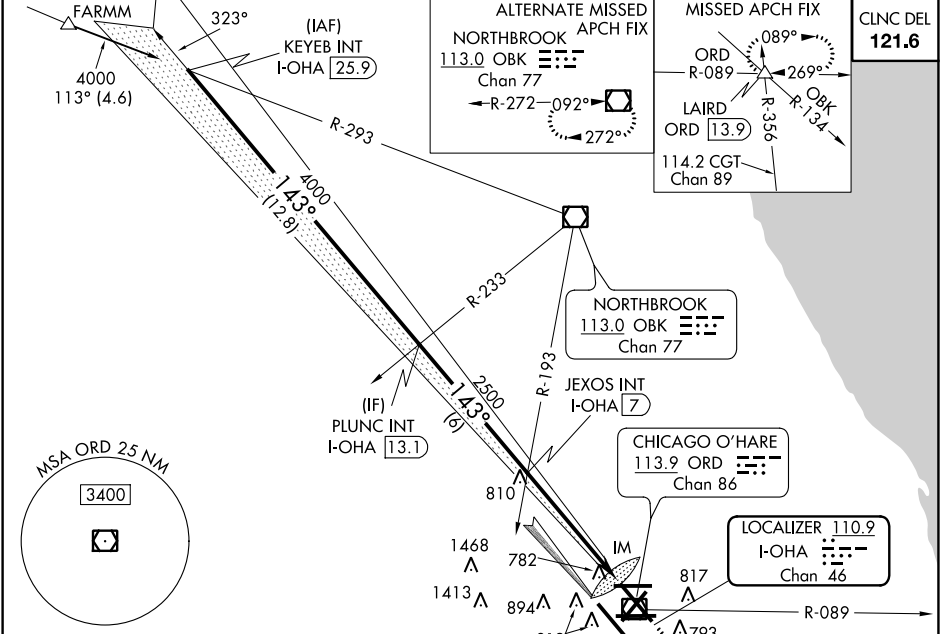
CHICAGO-O'HARE INTL (ORD)

Simultaneous approach authorized with Rwy 14R.

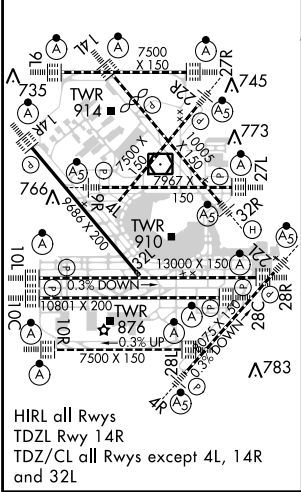
ALSIF-2

MISSED APPROACH: Climb to 1200 then climbing left turn to 4000 via heading 059° and ORD R-089 to LAIRD INT and hold, continue climb-in-hold to 4000.

ATIS	CHICAGO APP CON	O'HARE TOWERS	GND CON	(TWR CENTER)
135.4		128.15 348.0 (Rwy 9L/27R)	124.125 (TWR NORTH)	121.75 (OBND)
282.225	119.0 393.1	133.0 348.0 (10R/28L)	118.05 (TWR SOUTH)	121.9 (IBND)
		120.75 121.15 126.9 132.7 348.0 (CENTER)	226.675 (ALL TWRs)	134.15



ELEV 672	TDZE 653
----------	----------



Procedure	Turn NA	VGSI and ILS glidepath not coincident (VGSI Angle 3.00/TCH 75).	1200	4000	ORD	LAIRD
KEYEB INT	PLUNC INT	JEXOS INT	hdg 059°			
I-OHA 25.9	I-OHA 13.1	I-OHA 7				
4000	2500	2500				
12.8 NM	6 NM	5.5 NM				
CATEGORY	A	B	C	D		
S-ILS 14L	CAT II RA 102/12	100 DA 753				
S-ILS 14L	CAT IIIa	RVR 07				
S-ILS 14L	CAT IIIb	RVR 06				
S-ILS 14L	CAT IIIc	NA				

CATEGORY II & III ILS - SPECIAL AIRCREW & AIRCRAFT CERTIFICATION REQUIRED

EC-3, 10 DEC 2015 to 07 JAN 2016

EC-3, 10 DEC 2015 to 07 JAN 2016