

|  |               |                                |   |  |                                       |                                     |
|--|---------------|--------------------------------|---|--|---------------------------------------|-------------------------------------|
| <b>Flight Procedure Tracking Form</b>                              |               | <b>Action:</b><br>FLIGHT CHECK | <b>Task Type:</b><br>IAP                | <b>Date Open:</b><br>08/21/2014        | <b>Task #:</b><br>2014082125137501001 | <b>Request #:</b><br>20140821251375 |
| <b>Procedure:</b> ILS OR LOC RWY 15 AMDT 30D                       |               |                                | <b>Airport ID:</b><br>KORD              | <b>Airport:</b><br>CHICAGO O'HARE INTL |                                       | <b>Reimbursable #:</b><br>NO        |
| <b>City:</b> CHICAGO   | <b>ST:</b> IL | <b>GPS #:</b>                  | <b>Estimated Chart Date:</b> 05/26/2016 |  | <b>FICO #:</b>                        |                                     |
| <b>Fac ID:</b> NOCHANGE  |               | <b>Fac. Type:</b>              |   |  | <b>Specialist:</b> KELLY DEAN         |                                     |
| <b>Procedure Review</b>  |               |                                |   |  |                                       |                                     |
|  | <b>Rec'd</b>  | <b>Rel'd</b>                   | <b>Full Name</b>                        | <b>Comments</b>                        |                                       |                                     |
| <b>Lead:</b>   | 10/23/2015    |                                |   |  |                                       |                                     |
| <b>QA:</b>   |               |                                | 2/11/2016 16                            |  |                                       |                                     |
| <b>Liaison:</b>  |               |                                |   |  |                                       |                                     |
| <b>Procedure Comments:</b>   |               |                                | ENROUTE-NON                             | <b>Remark Type:</b> INFORMATION        |                                       |                                     |
| ABREV AMDT<br><br>FOR QUESTIONS, CONTACT JACOB POWERS 405-954-8702 |               |                                |   |  |                                       |                                     |

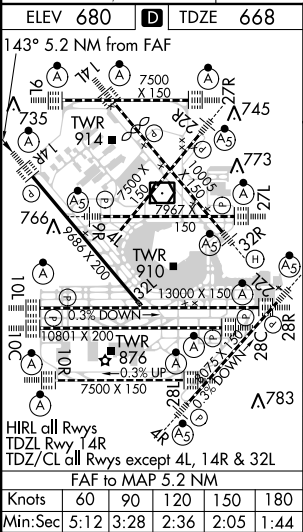
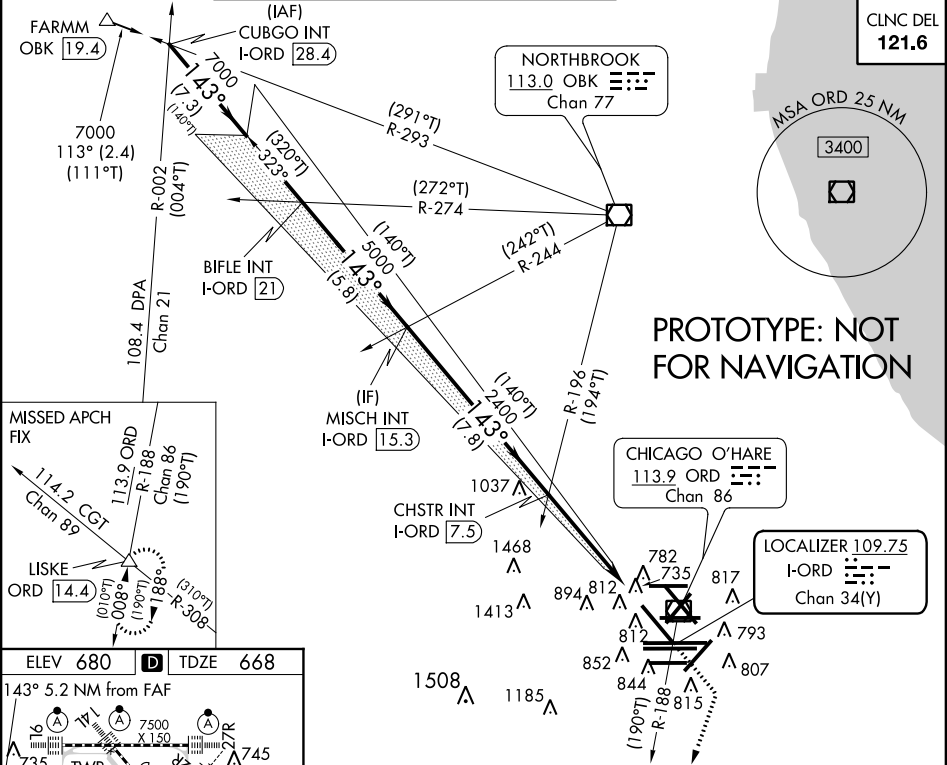
QUALITY  
28  
CHECKED

|   |                        |                             |   |
|---|------------------------|-----------------------------|---|
| LOC/DME I-ORD<br><b>109.75</b><br>Chan <b>34(Y)</b> | APP CRS<br><b>143°</b> | Rwy Idg<br>TDZE<br>Apt Elev | <b>8650</b><br><b>668</b><br><b>680</b> |
|---|------------------------|-----------------------------|---|

ILS or LOC RWY 15  
CHICAGO-O'HARE INTL (ORD)

|  |             |   |
|--|-------------|---|
|  | ALSIF-2<br> | MISSED APPROACH: Climb to 1700 then climbing right turn to 4000 on heading 220° and ORD VOR/DME R-188 to LISKE INT/ORD 14.4 DME and hold. |
|--|-------------|---|

|  |                                       |  |   |
|--|---------------------------------------|--|---|
| ATIS<br><b>135.4</b><br><b>282.225</b> | CHICAGO APP CON<br><b>119.0 393.1</b> | O'HARE TOWERS<br><b>128.15 348.0</b> (Rwy 9L/27R) <b>133.0 348.0</b> (10R/28L) <b>120.75 121.15 126.9 132.7 348.0</b> (CENTER) | GND CON<br><b>124.125</b> (TWR NORTH) <b>121.75</b> (TWR CENTER) (OBND)<br><b>118.05</b> (TWR SOUTH) <b>121.9</b> (IBND)<br><b>226.675</b> (ALL TWRs) <b>134.15</b> |
|--|---------------------------------------|--|---|



|   |                      |                      |   |
|---|----------------------|----------------------|---|
| VGSI and ILS glidepath not coincident (VGSI Angle 3.00/TCH 67). |                      |                      |   |
| CUBGO INT I-ORD 28.4  | BIFLE INT I-ORD 21   | MISCH INT I-ORD 15.3 | CHSTR INT I-ORD 7.5                           |
| *LOC only   |                      |                      |   |
| 7000 143° 7000 143° 5000 143° 2400 2400                         |                      |                      |   |
| GS 3.00° TCH 56   |                      |                      |   |
| 7.3 NM 5.8 NM 7.8 NM 3.9 NM 1.3 NM                              |                      |                      |   |
| CATEGORY  | A                    | B                    | C   |
| S-ILS 15  | 868/18 200 (200-1/2) |                      |   |
| S-LOC 15  | 1140/24              | 472 (500-1/2)        | 1140/40 472 (500-3/4) 1140/50 472 (500-1)     |
| CIRCLING  | 1220-1               | 540 (600-1)          | 1220-1 1/2 540 (600-1 1/2) 1240-2 560 (600-2) |

LOC/DME I-ORD

**109.75**

Chan **34** (Y)

APP CRS

**143°**

Rwy Idg

**8650**

TDZE

**668**

Apt Elev

**672**

ILS or LOC RWY 14R

CHICAGO-O'HARE INTL (ORD)

Simultaneous approach authorized with Rwy 14L.

ALS F-2

MISSED APPROACH: Climb to 1700 then climbing right turn to 4000 via heading 220° and ORD VOR/DME R-188 to LISKE INT/ORD 14.4 DME and hold.

|  |                                       |  |   |  |  |
|--|---------------------------------------|--|---|--|--|
| ATIS<br><b>135.4</b><br><b>282.225</b> | CHICAGO APP CON<br><b>119.0 393.1</b> | O'HARE TOWERS<br><b>128.15 348.0</b> (Rwy 9L/27R)<br><b>120.75 121.15 126.9 132.7 348.0</b> (CENTER) | <b>133.0 348.0</b> (10R/28L)<br><b>134.0</b> (CENTER) | <b>124.125</b> (TWR NORTH)<br><b>118.05</b> (TWR SOUTH)<br><b>226.675</b> (ALL TWRS) | GND CON<br><b>121.75</b> (TWR CENTER)<br><b>121.9</b> (OBND)<br><b>134.15</b> (IBND) |
|--|---------------------------------------|--|---|--|--|

ELEV 672 TDZE 668

143° 5.2 NM from FAF

HIRL all Rwys  
TDZL Rwy 14R  
TDZ/CL all Rwys except 4L, 14R & 32L

FAF to MSA 5.2 NM

|         |      |      |      |      |      |
|---------|------|------|------|------|------|
| Knots   | 60   | 90   | 120  | 150  | 180  |
| Min:Sec | 5:12 | 3:28 | 2:36 | 2:05 | 1:44 |

|  |                       |                          |                     |   |
|--|-----------------------|--------------------------|---------------------|---|
| VGSI and ILS glidepath not coincident (VGSI Angle 3.00/TCH 67).  |                       |                          |                     |   |
| <div><div>CUBGO INT I-ORD 28.4</div><div>BIFLE INT I-ORD 21</div><div>MISCH INT I-ORD 15.3</div><div>CHSTR INT I-ORD 7.5</div><div>I-ORD 3.6</div><div>I-ORD 2.3</div></div> |                       |                          |                     |   |
| <div>Procedure Turn NA</div> <div>GS 3.00° TCH 56</div> <div>7.3 NM 5.8 NM 7.8 NM 3.9 NM 1.1 NM 0.2</div>  |                       |                          |                     |   |
| CATEGORY   | A                     | B                        | C                   | D |
| S-ILS 14R  | 868/18 200 (200-1/2)  |                          |                     |   |
| S-LOC 14R  | 1140/24 472 (500-1/2) | 1140/40 472 (500-3/4)    | 1140/50 472 (500-1) |   |
| CIRCLING   | 1220-1 548 (600-1)    | 1220-1 1/2 548 (600-1/2) | 1240-2 568 (600-2)  |   |

CHICAGO, ILLINOIS

Amdt 30C 08MAR12

41°59'N-87°54'W

CHICAGO-O'HARE INTL (ORD)


ILS or LOC RWY 14R

EC-3, 10 DEC 2015 to 07 JAN 2016


EC-3, 10 DEC 2015 to 07 JAN 2016

|  |                        |  |
|--|------------------------|--|
| LOC/DME I-ORD<br><b>109.75</b><br>Chan <b>34</b> (Y) | APP CRS<br><b>143°</b> | Rwy Idg<br>TDZE<br>Apt Elev<br><b>8650</b><br><b>668</b><br><b>672</b> |
|--|------------------------|--|

ILS RWY 14R (CAT II & III)  
CHICAGO-O'HARE INTL (ORD)



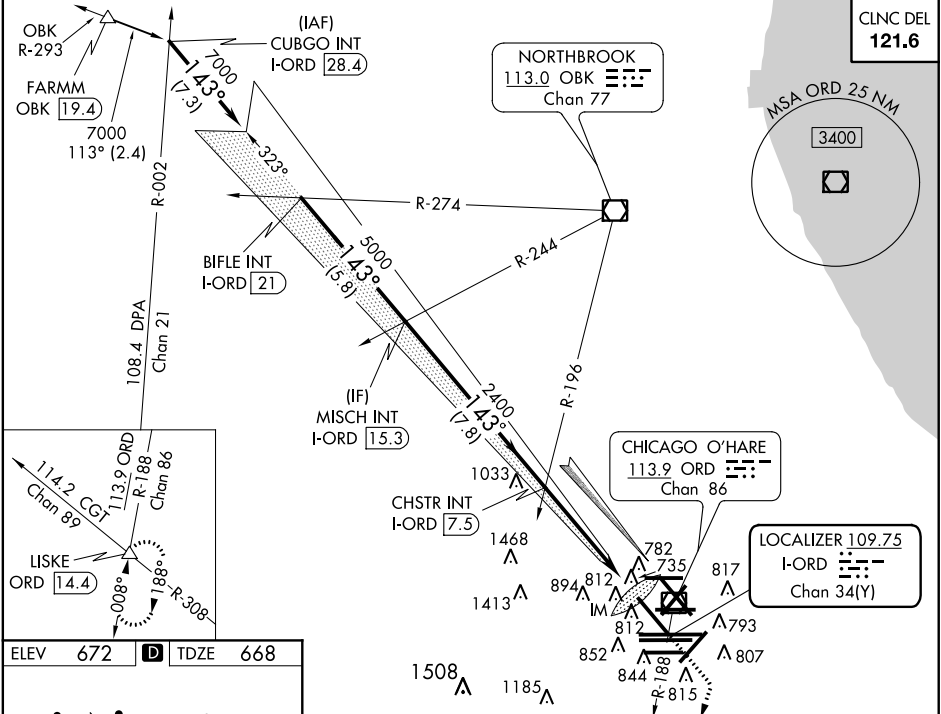
Simultaneous approach authorized with Rwy 14L.



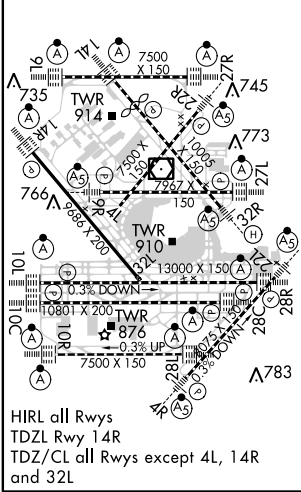
ALSF-2

MISSED APPROACH: Climb to 1700 then climbing right turn to 4000 via heading 220° and ORD VOR/DME R-188 to LISKE INT/ORD 14.4 DME and hold.

|  |                                       |  |  |   |
|--|---------------------------------------|--|--|---|
| ATIS<br><b>135.4</b><br><b>282.225</b> | CHICAGO APP CON<br><b>119.0 393.1</b> | O'HARE TOWERS<br><b>128.15 348.0</b> (Rwy 9L/27R) <b>133.0 348.0</b> (10R/28L) <b>120.75 121.15 126.9 132.7 348.0</b> (CENTER) | GND CON (TWR NORTH) <b>124.125</b> (TWR SOUTH) <b>118.05</b> (ALL TWRs) <b>226.675</b> | (TWR CENTER) <b>121.75</b> (OBND) <b>121.9</b> (IBND) <b>134.15</b> |
|--|---------------------------------------|--|--|---|



|                 |          |                 |
|-----------------|----------|-----------------|
| ELEV <b>672</b> | <b>D</b> | TDZE <b>668</b> |
|-----------------|----------|-----------------|



|  |   |                                |                               |           |
|--|---|--------------------------------|-------------------------------|-----------|
| Procedure<br>Turn NA<br>CUBGO INT<br>I-ORD <b>28.4</b> | VGSI and ILS glidepath not coincident<br>(VGSI Angle 3.00/TCH 67°).<br>BIFLE INT<br>I-ORD <b>21</b> | MISCH INT<br>I-ORD <b>15.3</b> | CHSTR INT<br>I-ORD <b>7.5</b> | IM<br>771 |
| 7000   | 7000  | 5000                           | 2400                          | 2400      |
| 7.3 NM   | 5.8 NM  | 7.8 NM                         | 5.2 NM                        | 954       |
| A  | B   | C                              | D                             |           |
| S-ILS 14R  | CAT II RA 110/12  | 100 DA 768                     |                               |           |
| S-ILS 14R  | CAT IIIa  | RVR 07                         |                               |           |
| S-ILS 14R  | CAT IIIb  | RVR 06                         |                               |           |
| S-ILS 14R  | CAT IIIc  | NA                             |                               |           |

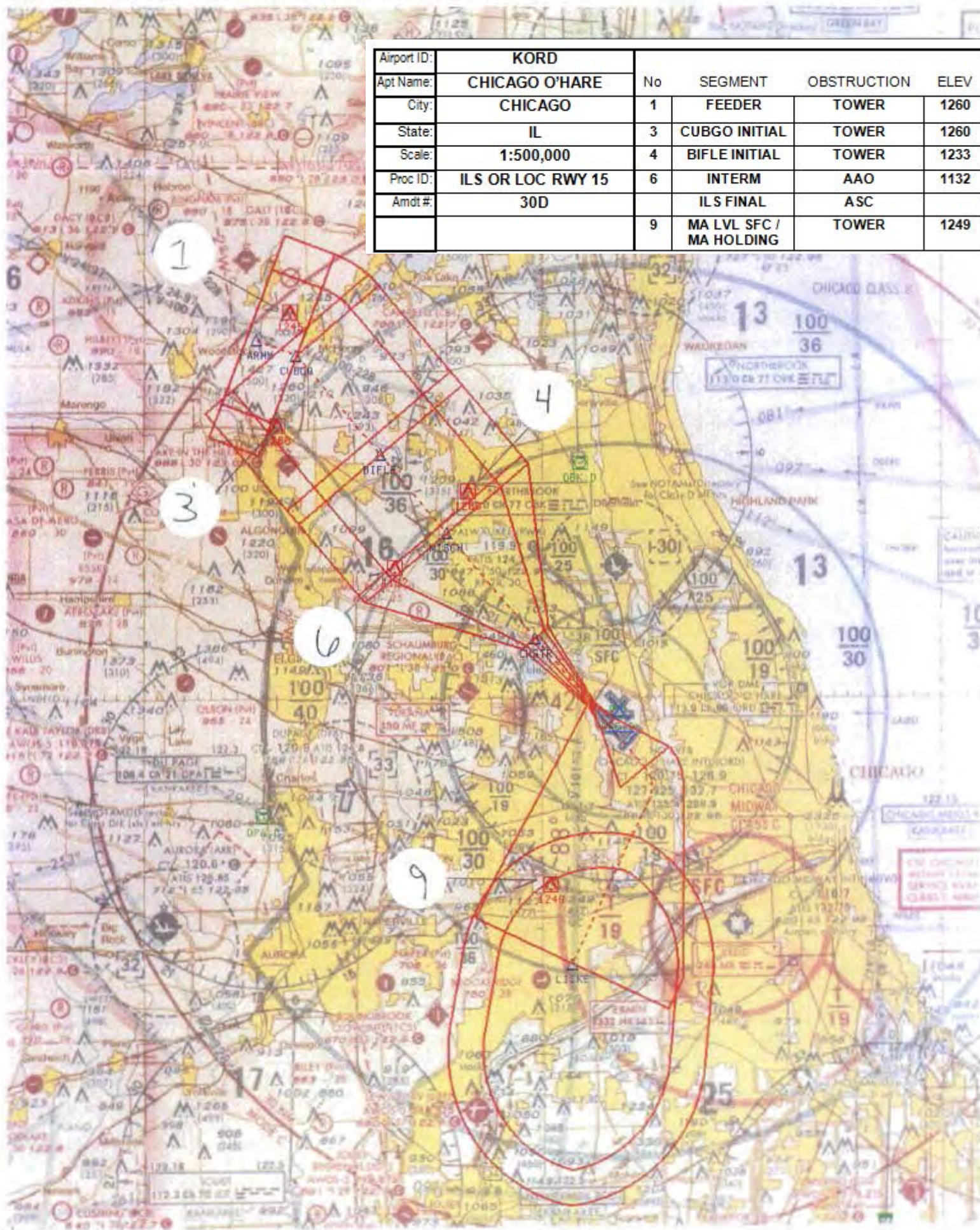
**CATEGORY II & III ILS - SPECIAL AIRCREW & AIRCRAFT CERTIFICATION REQUIRED**



NM 7 14 21 28 35 42 49  
 FT 42000 84000 126000 168000 210000 252000 294000

tpocdz | ordils14r (PROD) | 9 Feb 2007 10:02:11 | 1" = 41666.7 feet (MAP)

|             |                   |    |                            |             |      |
|-------------|-------------------|----|----------------------------|-------------|------|
| Airport ID: | KORD              |    |                            |             |      |
| Apt Name:   | CHICAGO O'HARE    | No | SEGMENT                    | OBSTRUCTION | ELEV |
| City:       | CHICAGO           | 1  | FEEDER                     | TOWER       | 1260 |
| State:      | IL                | 3  | CUBGO INITIAL              | TOWER       | 1260 |
| Scale:      | 1:500,000         | 4  | BIFLE INITIAL              | TOWER       | 1233 |
| Proc ID:    | ILS OR LOC RWY 15 | 6  | INTERM                     | AAO         | 1132 |
| Amdt #:     | 30D               |    | ILS FINAL                  | ASC         |      |
|             |                   | 9  | MA LVL SFC /<br>MA HOLDING | TOWER       | 1249 |





| Airport ID: | KORD              | ALTERNATE MISSED |                            |             |      |
|-------------|-------------------|------------------|----------------------------|-------------|------|
| Apt Name:   | CHICAGO O'HARE    | No               | SEGMENT                    | OBSTRUCTION | ELEV |
| City:       | CHICAGO           | 1                | FEEDER                     | TOWER       | 1260 |
| State:      | IL                | 3                | CUBGO INITIAL              | TOWER       | 1260 |
| Scale:      | 1:500,000         | 4                | BIFLE INITIAL              | TOWER       | 1233 |
| Proc ID:    | ILS OR LOC RWY 15 | 6                | INTERM                     | AAO         | 1132 |
| Amdt #:     | 30D               |                  | ILS FINAL                  | ASC         |      |
|             |                   | 9                | MA LVL SFC /<br>MA HOLDING | TOWER       | 1249 |

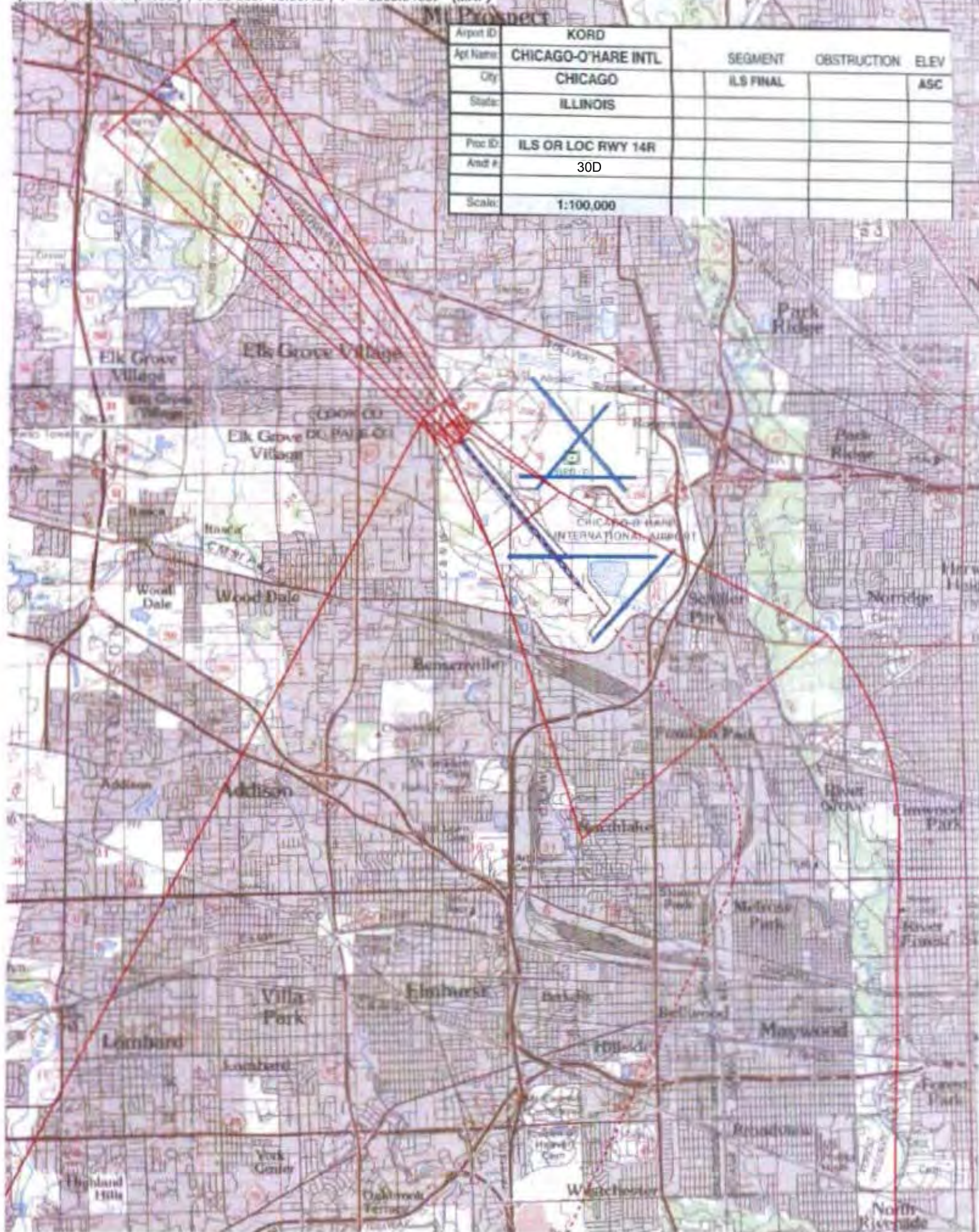




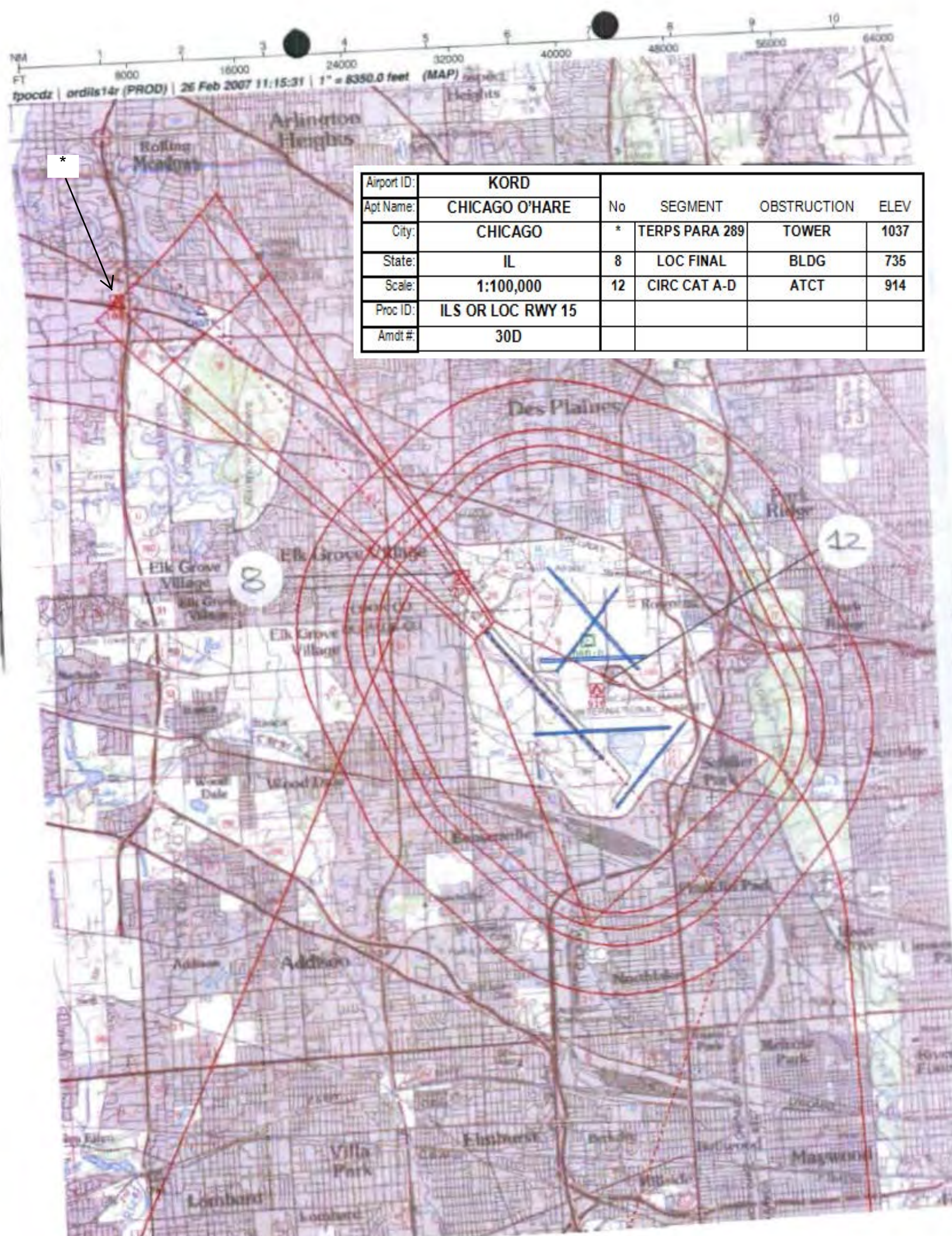
NM 1 2 3 4 5 6 7 8 9 10  
FT 8000 16000 24000 32000 40000 48000 56000 64000

fpocdz | ordils14r (PROD) | 9 Feb 2007 10:50:12 | 1" = 8333.3 feet (MAP)

|            |                     |           |             |      |
|------------|---------------------|-----------|-------------|------|
| Airport ID | KORD                | SEGMENT   | OBSTRUCTION | ELEV |
| Apt Name   | CHICAGO-O'HARE INTL | ILS FINAL |             | ASC  |
| City       | CHICAGO             |           |             |      |
| State      | ILLINOIS            |           |             |      |
| Proc ID    | ILS OR LOC RWY 14R  |           |             |      |
| And #      | 30D                 |           |             |      |
| Scale      | 1:100,000           |           |             |      |



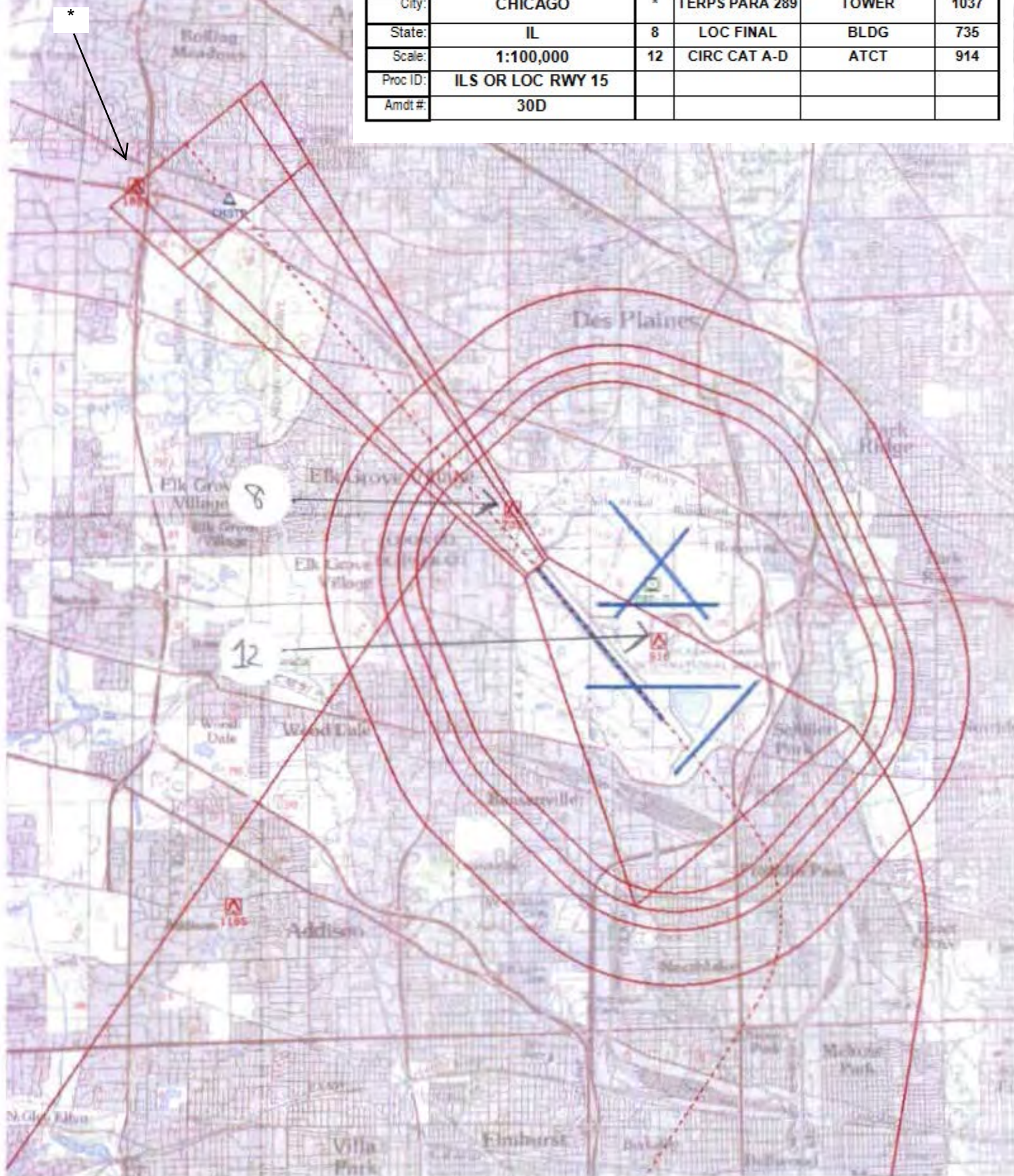




|             |                   |    |                |             |      |
|-------------|-------------------|----|----------------|-------------|------|
| Airport ID: | KORD              | No | SEGMENT        | OBSTRUCTION | ELEV |
| Apt Name:   | CHICAGO O'HARE    |    |                |             |      |
| City:       | CHICAGO           | *  | TERPS PARA 289 | TOWER       | 1037 |
| State:      | IL                | 8  | LOC FINAL      | BLDG        | 735  |
| Scale:      | 1:100,000         | 12 | CIRC CAT A-D   | ATCT        | 914  |
| Proc ID:    | ILS OR LOC RWY 15 |    |                |             |      |
| Amdt #:     | 30D               |    |                |             |      |



|             |                   |                  |                |             |      |
|-------------|-------------------|------------------|----------------|-------------|------|
| Airport ID: | KORD              | ALTERNATE MISSED |                |             |      |
| Apt Name:   | CHICAGO O'HARE    | No               | SEGMENT        | OBSTRUCTION | ELEV |
| City:       | CHICAGO           | *                | TERPS PARA 289 | TOWER       | 1037 |
| State:      | IL                | 8                | LOC FINAL      | BLDG        | 735  |
| Scale:      | 1:100,000         | 12               | CIRC CAT A-D   | ATCT        | 914  |
| Proc ID:    | ILS OR LOC RWY 15 |                  |                |             |      |
| Amdt #      | 30D               |                  |                |             |      |





|   |  |                          |                  |                                   |                             |                           |
|---|--|--------------------------|------------------|-----------------------------------|-----------------------------|---------------------------|
| <b>Flight Procedure Tracking Form</b>           |  | Action: FLIGHT CHECK     | Task Type: LAP   | Date Open: 11/16/2006             | Task #: 2006082208848701023 | Request #: 20060822088487 |
| Procedure: APPROACH ILS OR LOC RWY 14 R AMDT 30 |  |                          | Airport ID: KORD | Airport: CHICAGO-O'HARE INTL      |                             | Reimbursable #:           |
| City: CHICAGO                                   |  | ST: IL                   | GPS #:           | Estimated Chart Dates: 07/05/2007 |                             | SPCO #: <b>SPOT 019-7</b> |
| Fac ID: <b>BR0</b>                              |  | Fac. Type: <b>PROC/A</b> |                  | Specialist: CHRIS ZUEST           |                             |                           |

| Procedure Review |            |                |               |                  |
|------------------|------------|----------------|---------------|------------------|
|                  | Rec'd      | Rel'd          | Full Name     | Comments         |
| Lead:            | 09/07/2006 | 03/28/2007     | DONALD SMITH  | <b>NEW FLICK</b> |
| QA:              | 03/28/2007 | 03/28/2007     | DON HARMER    |                  |
| Liaison:         | 03/28/2007 | <b>3/30/07</b> | MARY McDONALD |                  |

Procedure Comments: **ENROUTE** Remark Type: INFORMATION **5/8** **PRG 202**

CHICAGO, IL CHICAGO-O'HARE INTL (KORD) (ILS OR LOC RWY 14R (CAT I, II & III), AMDT 30 ENROUTE-YES FC AND PUB ARE THE SAME 7.5.07

ATTACHED FORMS: B260-3; B260-10; B260-9; B260-2(S); BIFLE, IL-REV 2; CHSTR, IL-ORIG; CUBGO, IL-ORIG; FARMN, IL-REV 7; LISKE, IL-ORIG; MISCH, IL-REV 5. ESV(S): CHICAGO (ORD) LOC, IL-R-323/22/25/70; R-323/29/25/70; GS-R-323/22/25/70.

CONTACT: GEORGE DAVIS/DON SMITH, AVN-120 LEADS 405.954.9960/9198 OR MARY McDONALD FICO LIAISON 405.954.8976; FAX: 405.954.1391.

| Flight Inspection                             |        |     |                            |       |
|---|--------|-----|----------------------------|-------|
| Inspection Date                               | Crew # | N # | Sat                        | Unsat |
| 04/22/2007                                    | VDOIB  | 55  | Sat<br>as 174<br>Comp. Ref |       |
| Inspector Signature: <i>[Signature]</i>       |        |     |                            |       |
| Flight Inspection Remarks: <b>DULANE, BTR</b> |        |     | Data Sent: 04/22/07        |       |

**SATISFACTORY BASED ON LUSTAK NOTES.**

**VERIFYING OBSTACLE & B**

**MISSING APPROACH PROCEDURES SAT**

**ORD LOC ESV DISAPPROVED @ 2500' & 29NM = APPROVED @ 3000' & 29NM (LUSTAK NOTES)**