

Flight Procedure Tracking Form		Action: FLIGHT CHECK	Task Type: IAP	Date Open: 07/14/2015	Task #: 2014082025294401002	Request #: 20140820252944
Procedure: RNAV (GPS) RWY 9 AMDT 0B			Airport ID: PAOT	Airport: RALPH WIEN MEMORIAL	Reimbursable #: NO	
City: KOTZEBUE	ST: AK	GPS #:	Estimated Chart Date: 10/12/2017		FICO #: 1189897	
Fac ID: N/A		Fac. Type:		Specialist: DUSTIN DAVIDSON		
Procedure Review						
	Rec'd	Rel'd	Full Name	Comments		
Lead:	04/20/2017	07/11/2017	ROBERT HAMILTON	QUALITY		
QA:	07/11/2017	07/11/2017	ROBERT HAMILTON	32 8/11/17 POrtiz		
Liaison:	07/11/2017	07/12/2017	MARY MCDONALD	CHECKED		
Procedure Comments:			ENROUTE-NON	Remark Type: INFORMATION		
<p>MAGVAR CHANGE ONLY - REQUEST FC TABLE TOP.</p> <p>ASSIGNED MAG VAR: PAOT: OLD 15E - NEW 11E.</p> <p>CONTACT: ROBERT HAMILTON 405-954-4608.</p> <p>08/10/17: THIS IS AN UPDATED COPY OF THE FORM DEVELOPED ON 05/19/17.</p> <p>1. CHANGED LPV AND LNAV/VNAV ALL CATS VISIBILITY FROM 5000 RVR TO 4500 RVR.</p> <p>2. AMENDED CHANGE #15 FROM "INCREASED LPV AND LNAV/VNAV ALL CATS VISIBILITIES FROM RVR 4000 TO RVR 5000" TO "INCREASED LPV AND LNAV/VNAV ALL CATS VISIBILITIES FROM RVR 4000 TO RVR 4500".</p> <p>3. AMENDED REASON #15 FROM "NO FULL LENGTH PARALLEL TAXIWAY IAW AC 150/5300-13A" TO "IAW 8260.3B CHG26 TABLE 3-5A".</p>						

1. FLIGHT PROCEDURE IDENTIFICATION:

Kotzebue, AK
Ralph Wein Memorial (PAOT)
RNAV (GPS) RWY 9

2. WAIVER REQUIRED AND APPLICABLE STANDARD:

Order 8260.3C 1-2-3b. The airport infrastructure requirements of FAA AC 150/5300-13A, Airport Design, paragraph 317, Table 3-4 parallel taxiway required for visibility 3/4 to less 1 SM.

3. REASON FOR WAIVER (JUSTIFICATION FOR NONSTANDARD TREATMENT):

PAOT does not have a full length parallel taxiway. Approval of this waiver will authorize the lowest possible visibility minimums of RVR 4500.

4. EQUIVALENT LEVEL OF SAFETY PROVIDED:

1. PAOT has a Class E surface area, which is in effect whenever the airport weather is reported to be less than 3 SM visibility and/or the ceiling is reported to be less than 1000 feet. This allows only one aircraft at a time to operate in the surface area whenever the weather is below basic VFR.
2. PAOT airport is located in Kotzebue, a remote village in NW Alaska. The airport master record indicates a relatively low number of operations occur yearly.
3. PAOT has an operating FSS. The FSS monitors the local CTAF and passes on any communications. The FSS operates daily from 1600-0900Z.

5. ALTERNATIVE ACTIONS DEEMED NOT FEASIBLE:

The geographic limitations (the runway is on a narrow peninsula with minimal land area) of runway 9 would make the addition of a full length taxiway impossible.

6. COORDINATION WITH USER ORGANIZATIONS (SPECIFY):

AAL RRGB, AJV-5

7. SUBMITTED BY:

DATE	OFFICE IDENTIFICATION	TITLE	SIGNATURE
	AJV-54	Manager, Instrument Flight Procedures Group	Steven L. Szukala

8. AFS ACTIONS:

☐ APPROVED ☐ DISAPPROVED ☐ NOT REQUIRED

Digitally signed by
ROBERT G HAMILTON
Aug 14, 2017

COMMENTS:

DATE	ROUTING SYMBOL	SIGNATURE
------	----------------	-----------

KOTZEBUE, ALASKA

AL-2118 (FAA)

15288

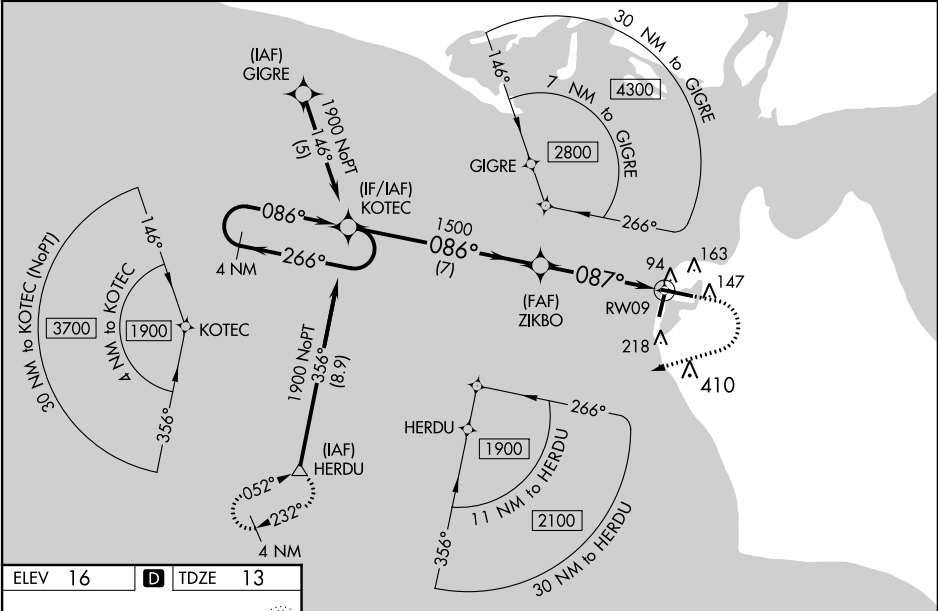
WAAS CH 97714 W09A	APP CRS 087°	Rwy Idg 5900 TDZE 13 Apt Elev 16
--	------------------------	---

RNAV (GPS) RWY 9
RALPH WIEN MEMORIAL (OTZ) (PAOT)

⚠ For uncompensated Baro-VNAV systems, LNAV/VNAV NA below -20°C (-4°F) or above 54°C (130°F). DME/DME RNP-0.3 NA. When local altimeter setting not received, use Noatak altimeter setting: increase all DA 107 feet and all visibilities ½ mile; increase all MDA 120 feet and all LNAV visibilities ½ mile, increase Circling visibility Cats C and D ½ mile. VDP and Baro-VNAV NA when using Noatak altimeter setting. Night landing: Rwy 18, 36 NA, Rwy 27 operational VGSi required, remain on or above VGSi glidepath until threshold.

MISSED APPROACH: Climb to 500 then climbing right turn to 2000 direct HERDU and hold.

AFIS 135.45	ANCHORAGE CENTER 119.2 263.0	KOTZEBUE RADIO 123.6 (CTAF) 0
-----------------------	--	---



ELEV 16 D TDZE 13

REIL Rwy 9 and 27
HIRL Rwy 9-27
MIRL Rwy 18-36

4 NM Holding Pattern KOTEC				500	2000	HERDU
GP 3.00° TCH 42				* LNAV only		
				* 1 NM to RWY 9		
CATEGORY	A	B	C	D		
LPV DA	263/40		250 (300-¾)			
LNAV/VNAV DA	263/40		250 (300-¾)			
LNAV MDA	360/55		347 (400-1¼)			
CIRCLING	520-1	504 (600-1)	720-2 704 (800-2)	720-2¼ 704 (800-2¼)		

KOTZEBUE, ALASKA
Orig-A 15OCT15

66°53'N-162°36'W

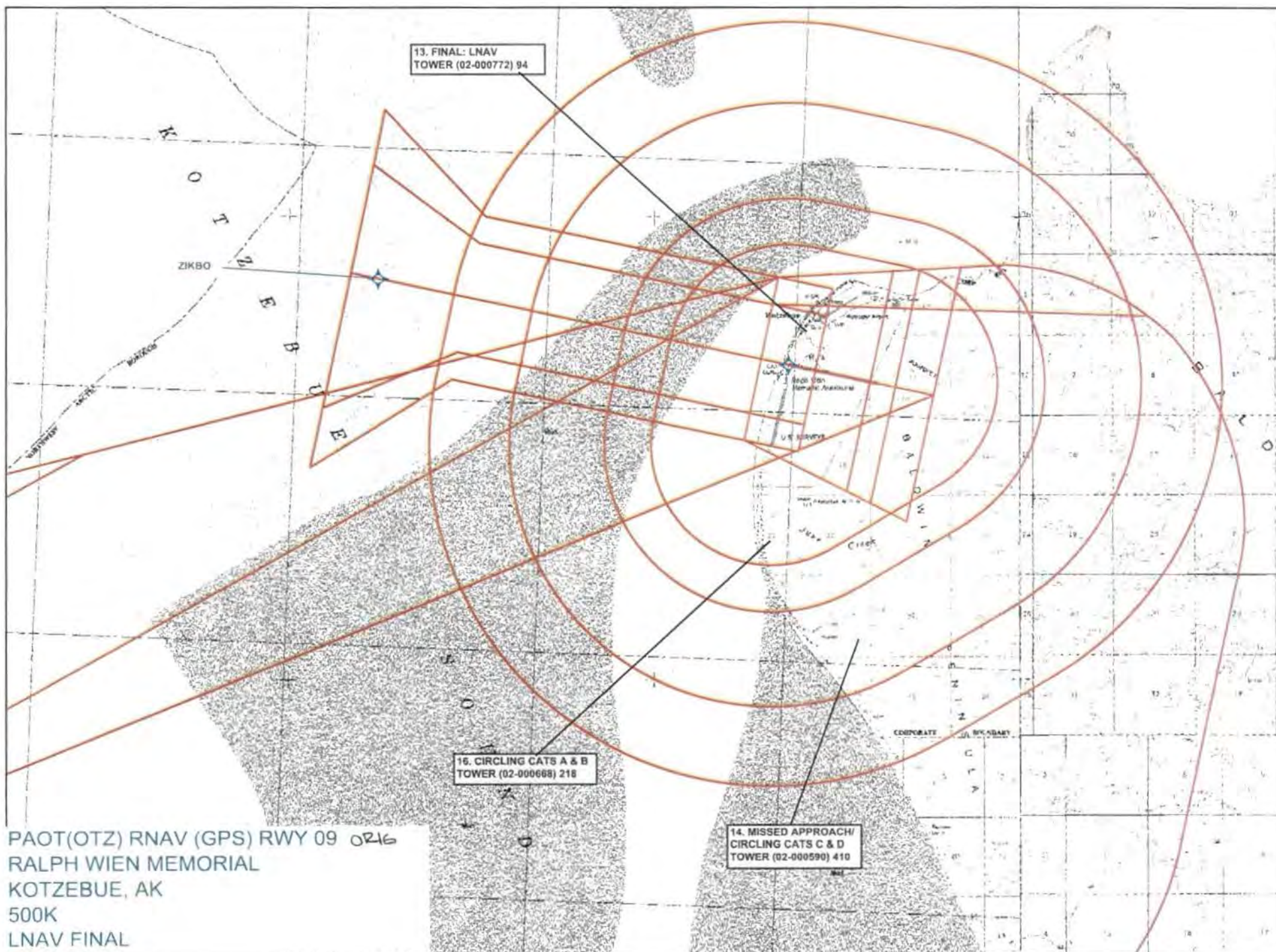
RALPH WIEN MEMORIAL (OTZ) (PAOT)
RNAV (GPS) RWY 9

AK, 15 OCT 2015 to 10 DEC 2015

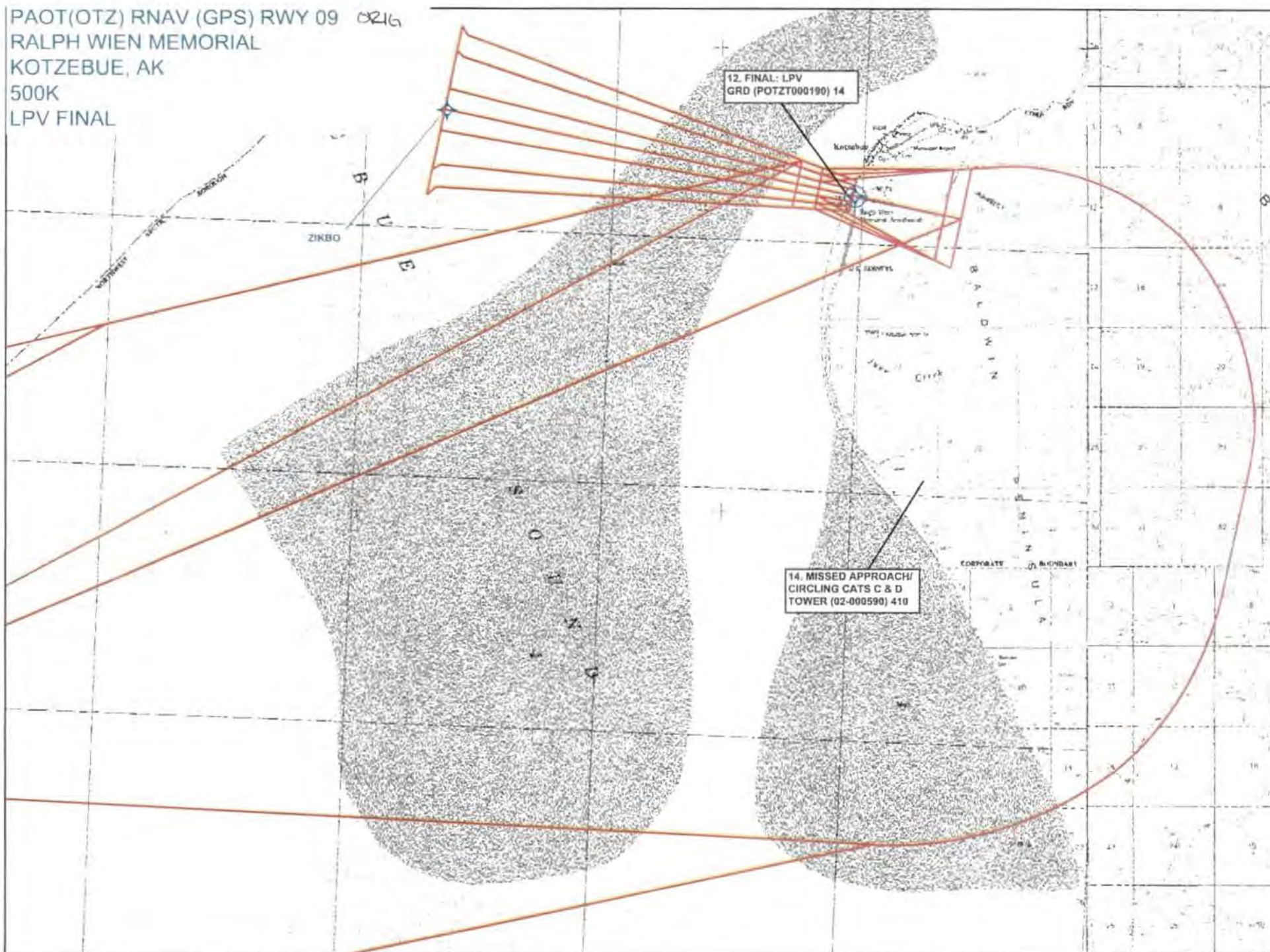
AK, 15 OCT 2015 to 10 DEC 2015

13. FINAL: LNAV/VNAV
TOWER (02-000772) 94

14. MISSED APPROACH/
CIRCLING CATS C & D
TOWER (02-000590) 410



PAOT(OTZ) RNAV (GPS) RWY 09 0216
RALPH WIEN MEMORIAL
KOTZEBUE, AK
500K
LPV FINAL



1. TAA (STRAIGHT-IN) 30NM
TREE 1940

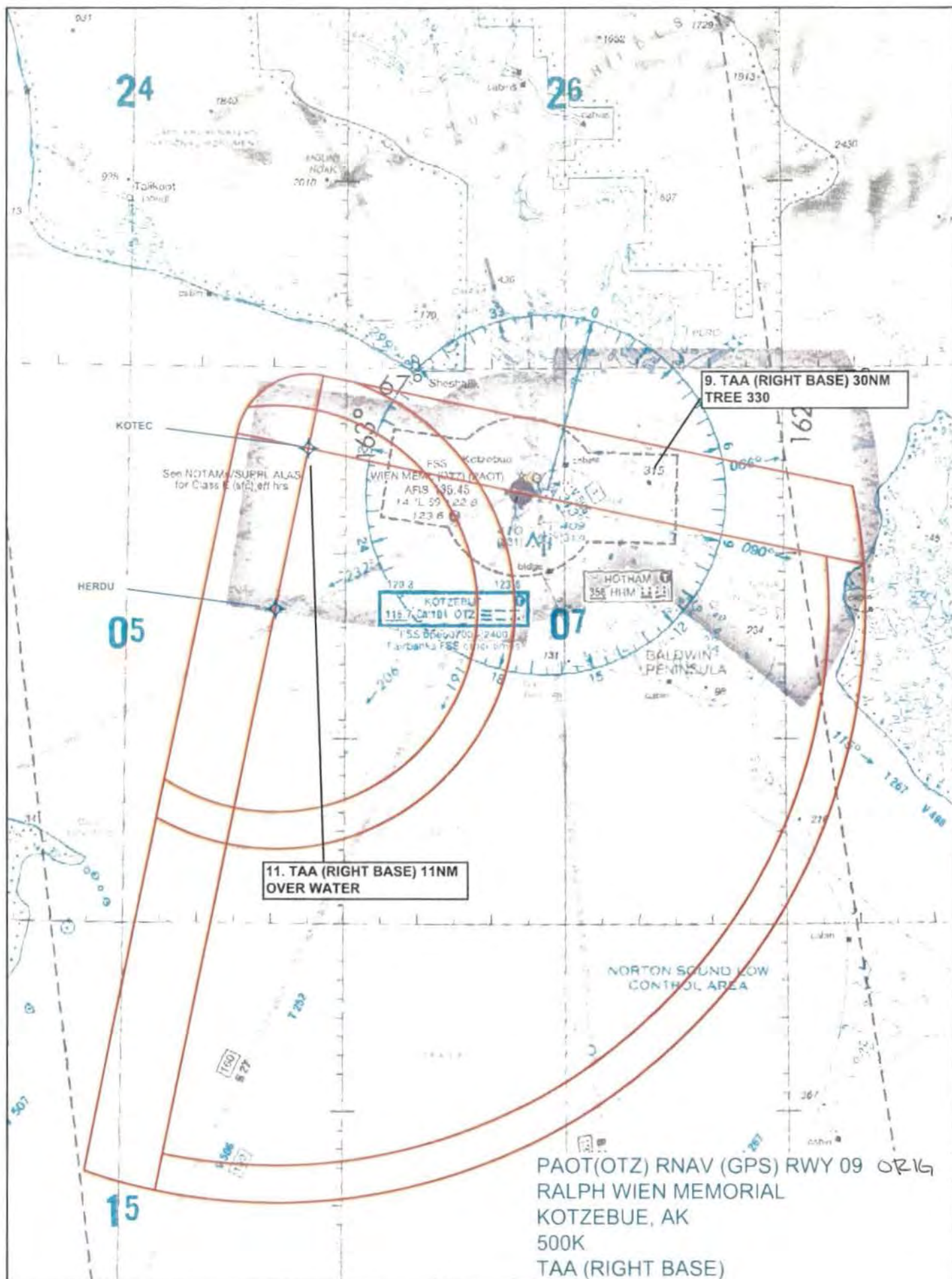
3. TAA (STRAIGHT-IN) 7NM
OVER WATER

See NOTAMS SUPPL ALAS
for Class E (400) eff hrs

FSS Kotzebue
WIEN MEML (OTZ) (PAOT)
AFIS 135.45
14 'L 69 122.8
123.6

KOTZERUF
115.7 CA 184 012
FSS 0000 1700 2400
Fairbanks FSS other times

PAOT(OTZ) RNAV (GPS) RWY 09 0216
RALPH WIEN MEMORIAL
KOTZEBUE, AK
500K
TAA (STRAIGHT-IN)



PAOT(OTZ) RNAV (GPS) RWY 09 0216
 RALPH WIEN MEMORIAL
 KOTZEBUE, AK
 500K
 TAA (LEFT BASE)

