

<b>Flight Procedure Tracking Form</b>		<b>Action:</b> FLIGHT CHECK	<b>Task Type:</b> TEXTUAL DP	<b>Date Open:</b> 08/06/2014	<b>Task #:</b> 2014080631615401001	<b>Request #:</b> 20140806316154
<b>Procedure:</b> WILLIAMSBURG KY KBYL AMDT 2			<b>Airport ID:</b> KBYL	<b>Airport:</b> WILLIAMSBURG-WHITLEY COUNTY		<b>Reimbursable #:</b> NO
<b>City:</b> WILLIAMSBURG	<b>ST:</b> KY	<b>GPS #:</b>	<b>Estimated Chart Date:</b> 08/15/2019		<b>FICO #:</b>	
<b>Fac ID:</b> N/A		<b>Fac. Type:</b>			<b>Specialist:</b> JOSHUA DUGAN	
<b>Procedure Review</b>						
	<b>Rec'd</b>	<b>Rel'd</b>	<b>Full Name</b>	<b>Comments</b>		
<b>Lead:</b>	08/07/2014					
<b>QA:</b>						
<b>Liaison:</b>						
<b>Procedure Comments:</b>			<b>ENROUTE-NON</b>			
			<b>Remark Type:</b> INFORMATION			
FLIGHT CHECK REQUIRED DUE TO MINIMUM CHANGES.  THIS AMENDMENT CLEARS NOTAMS FDC 8/7328, FDC 8/0124.  CONTACT CASIMIR TABAKA 405-954-7931						





19115

**TAKEOFF MINIMUMS, (OBSTACLE) DEPARTURE PROCEDURES, AND****DIVERSE VECTOR AREA (RADAR VECTORS)****EXISTING****TULLAHOMA, TN****TULLAHOMA RGNL/WM NORTHERN  
FIELD (THA)****TAKEOFF MINIMUMS AND (OBSTACLE)  
DEPARTURE PROCEDURES****AMDT 1 11237 (FAA)****TAKEOFF MINIMUMS: Rwy 9, 27, NA -  
Environmental.****TAKEOFF OBSTACLE NOTES: Rwy 6**, buildings  
beginning 36' from DER, 439' right of centerline, up to  
28' AGL/1098' MSL. Rising terrain, beginning 41' from  
DER, 5' right of centerline, up to 1090' MSL. Fence 83'  
from DER, 393' right of centerline, up to 12' AGL/1082'  
MSL. Trees beginning 130' from DER, left and right of  
centerline, up to 100' AGL/1199' MSL. Light poles  
beginning 674' from DER, 311' left of centerline, up to  
36' AGL/1096' MSL. **Rwy 18**, trees beginning 146'  
from DER, left and right of centerline, up to 100'  
AGL/1199' MSL. Buildings beginning 299' from DER,  
217' right of centerline, up to 32' AGL/1102' MSL. **Rwy  
24**, trees beginning 454' from DER, left and right of  
centerline, up to 100' AGL/1219' MSL. **Rwy 36**, trees  
beginning 24' from DER, left and right of centerline, up  
to 100' AGL/1229' MSL. Light pole 260' from DER, 498'  
left of centerline, 18' AGL/1088' MSL.**UNION CITY, TN****EVERETT-STEWART RGNL (UCY)****TAKEOFF MINIMUMS AND (OBSTACLE)  
DEPARTURE PROCEDURES****AMDT 1 11237 (FAA)****TAKEOFF OBSTACLE NOTES: Rwy 1**, obstruction light  
9' from DER, 124' right of centerline, 2' AGL/310' MSL.  
Trees 1200' from DER, 734' left of centerline, up to 69'  
AGL/379' MSL. Tractor 112' from DER, 405' left of  
centerline, 12' AGL/321' MSL. **Rwy 19**, trees 1050'  
from DER, 61' left of centerline, up to 100' AGL/449'  
MSL. Trees 1452' from DER, 865' right of centerline,  
up to 100' AGL/459' MSL. Tractor 32' from DER, 81'  
left of centerline, 12' AGL/351' MSL.**WAVERLY, TN****HUMPHREYS COUNTY (0M5)****TAKEOFF MINIMUMS AND (OBSTACLE)  
DEPARTURE PROCEDURES****ORIG 79221 (FAA)****TAKEOFF MINIMUMS: Rwy 3, 21, 200-1.****WILLIAMSBURG, KY****WILLIAMSBURG-WHITLEY COUNTY (BYL)****TAKEOFF MINIMUMS AND (OBSTACLE)  
DEPARTURE PROCEDURES****AMDT 1 12264 (FAA)****TAKEOFF MINIMUMS: Rwy 2**, 300-1¼ or std. w/ a min.  
climb of 221' per NM to 1500. **Rwy 20**, std. w/ min. climb  
of 337' per NM to 2800, or 1400-3 for climb in visual  
conditions.**DEPARTURE PROCEDURE: Rwy 2**, climb heading 023°  
to 2000 before turning East. **Rwy 20**, for climb in visual  
conditions cross Williamsburg-Whitley County Airport at  
or above 2400 MSL before proceeding on course. When  
executing VCOA, notify ATC prior to departure.**TAKEOFF OBSTACLE NOTES: Rwy 2**, trees beginning  
3563' from DER, left of centerline, up to 100' AGL/1353'  
MSL. Trees beginning 4285' from DER, right of  
centerline, up to 100' AGL/1355' MSL. Tree 1.1 NM from  
DER, 52' right of centerline, up to 76' AGL/1355' MSL.  
Tree 1.1 NM from DER, 195' left of centerline, up to 89'  
AGL/1348' MSL. **Rwy 20**, trees beginning 331' from  
DER, 331' left of centerline, up to 57' AGL/1217' MSL.**WINCHESTER, TN****WINCHESTER MUNI (BGF)****TAKEOFF MINIMUMS AND (OBSTACLE)  
DEPARTURE PROCEDURES****AMDT 2 14317 (FAA)****TAKEOFF MINIMUMS: Rwy 18**, std. w/min. climb of 330'  
per NM to 2400, or 1500-3 for climb in visual conditions.**DEPARTURE PROCEDURE: Rwy 18**, climb heading 185°  
to 2300 before turning left. **Rwy 36**, climb heading 005°  
to 2000 before turning right.**VCOA: Rwy 18**, obtain ATC approval for climb in visual  
conditions when requesting IFR clearance. Climb in  
visual conditions to cross Winchester Muni airport at or  
above 2300 before proceeding on course.**TAKEOFF OBSTACLE NOTES: Rwy 18**, trees beginning  
174' from DER, 387' left of centerline, up to 81'  
AGL/1062' MSL. Vehicles on roadway beginning 388'  
from DER, left and right of centerline, up to 17'  
AGL/1006' MSL. Tower 726' from DER, 337' left of  
centerline, 31' AGL/1018' MSL. Trees beginning 1237'  
from DER, 539' right of centerline, up to 126' AGL/1057'  
MSL. Rising terrain beginning 3.4 NM from DER, left and  
right of centerline, up to 2119' MSL. **Rwy 36**, rising  
terrain and trees beginning 97' from DER, 293' left of  
centerline, up to 109' AGL/1100' MSL. Vehicles on  
roadway beginning 817' from DER, 659' left of centerline,  
up to 17' AGL/996' MSL. Trees beginning 2654' from  
DER, 75' right of centerline, up to 60' AGL/1052' MSL.

25 APR 2019 to 23 MAY 2019

25 APR 2019 to 23 MAY 2019



19115

**TAKEOFF MINIMUMS, (OBSTACLE) DEPARTURE PROCEDURES, AND****DIVERSE VECTOR AREA (RADAR VECTORS)**



**KBYL  
WILLIAMSBURG, KY  
WILLIAMSBURG-WHITLEY COUNTY  
1:100K  
RWY 2 DIVERSE DEPARTURE  
AMDT #2**

CTA/OBSTACLE TOWER (1666)  
MANDATING ODP

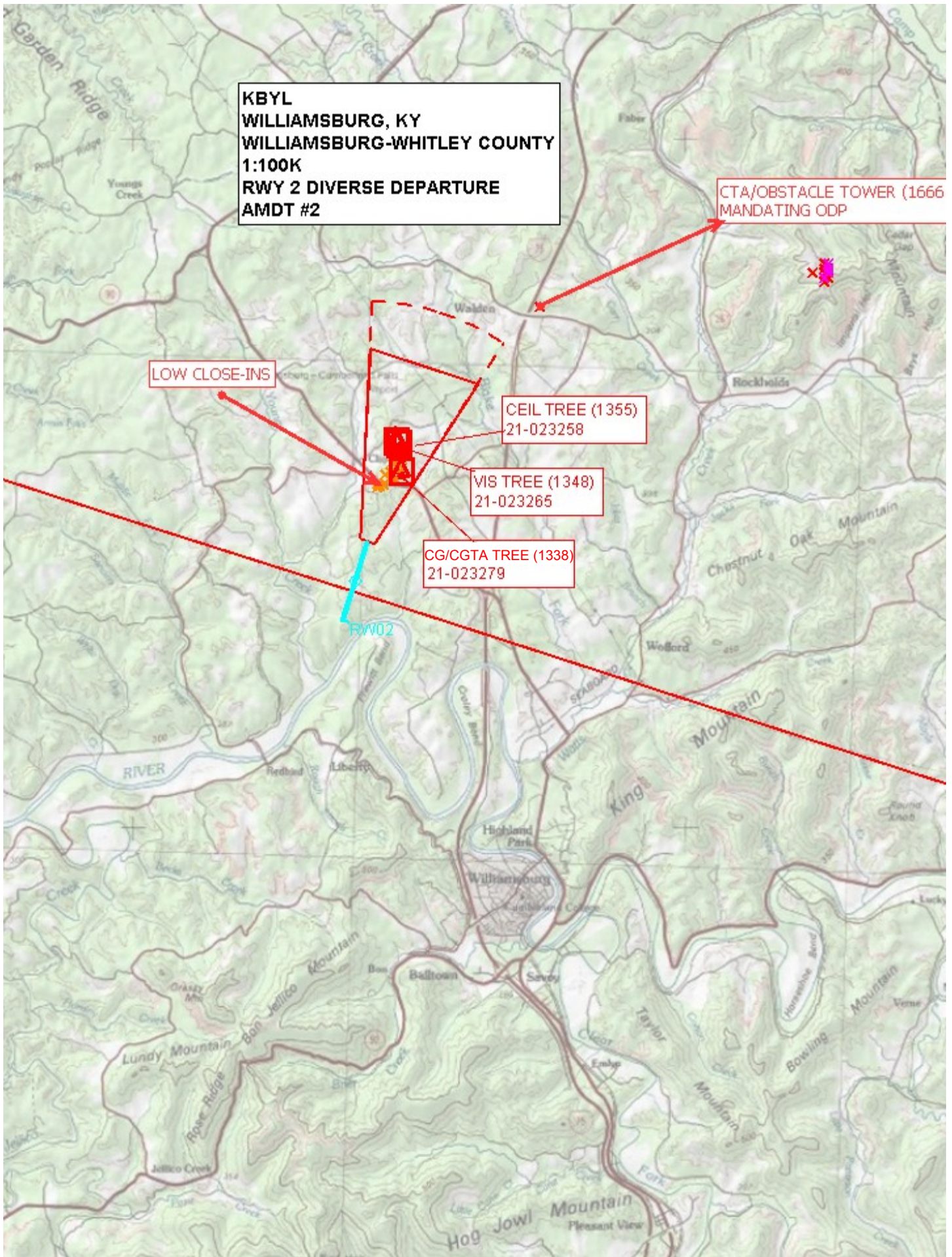
LOW CLOSE-INS

CEIL TREE (1355)  
21-023258

VIS TREE (1348)  
21-023265

CG/CGTA TREE (1338)  
21-023279

RW02





**KBYL**  
**WILLIAMSBURG, KY**  
**WILLIAMSBURG-WHITLEY COUNTY**  
**1:500K**  
**RWY 2 DIVERSE DEPARTURE**  
**AMDT #2**

LOW CLOSE-INS

CTA/OBSTACLE TOWER (1666)  
MANDATING ODP

CEIL TREE (1355)  
21-023258

VIS TREE (1348)  
21-023265

CG/CGTA TREE (1338)  
21-023279



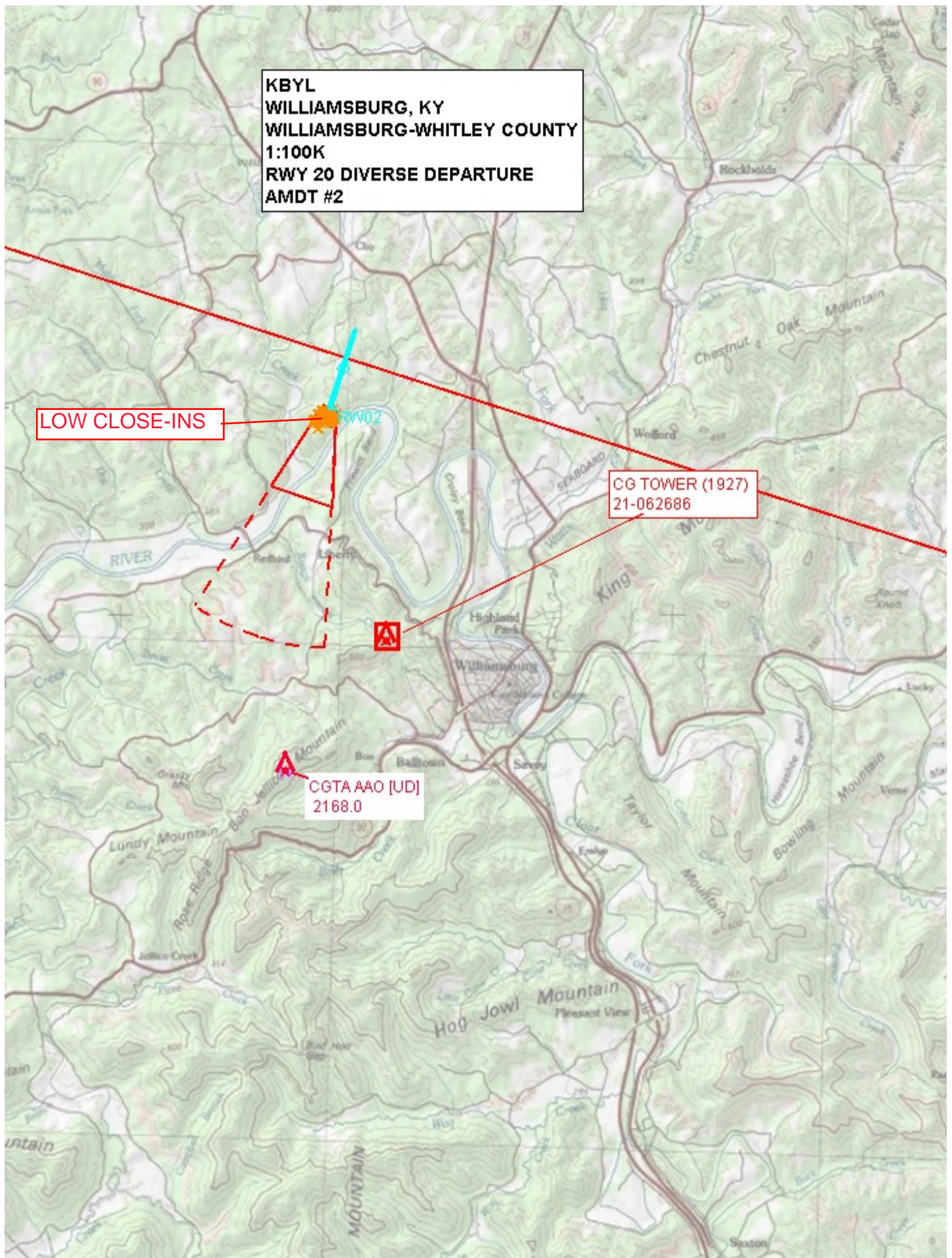
**KBYL  
WILLIAMSBURG, KY  
WILLIAMSBURG-WHITLEY COUNTY  
1:100K  
RWY 20 DIVERSE DEPARTURE  
AMDT #2**

**LOW CLOSE-INS**

**RWY 20**

**CG TOWER (1927)  
21-062686**

**CGTA AAO [UD]  
2168.0**



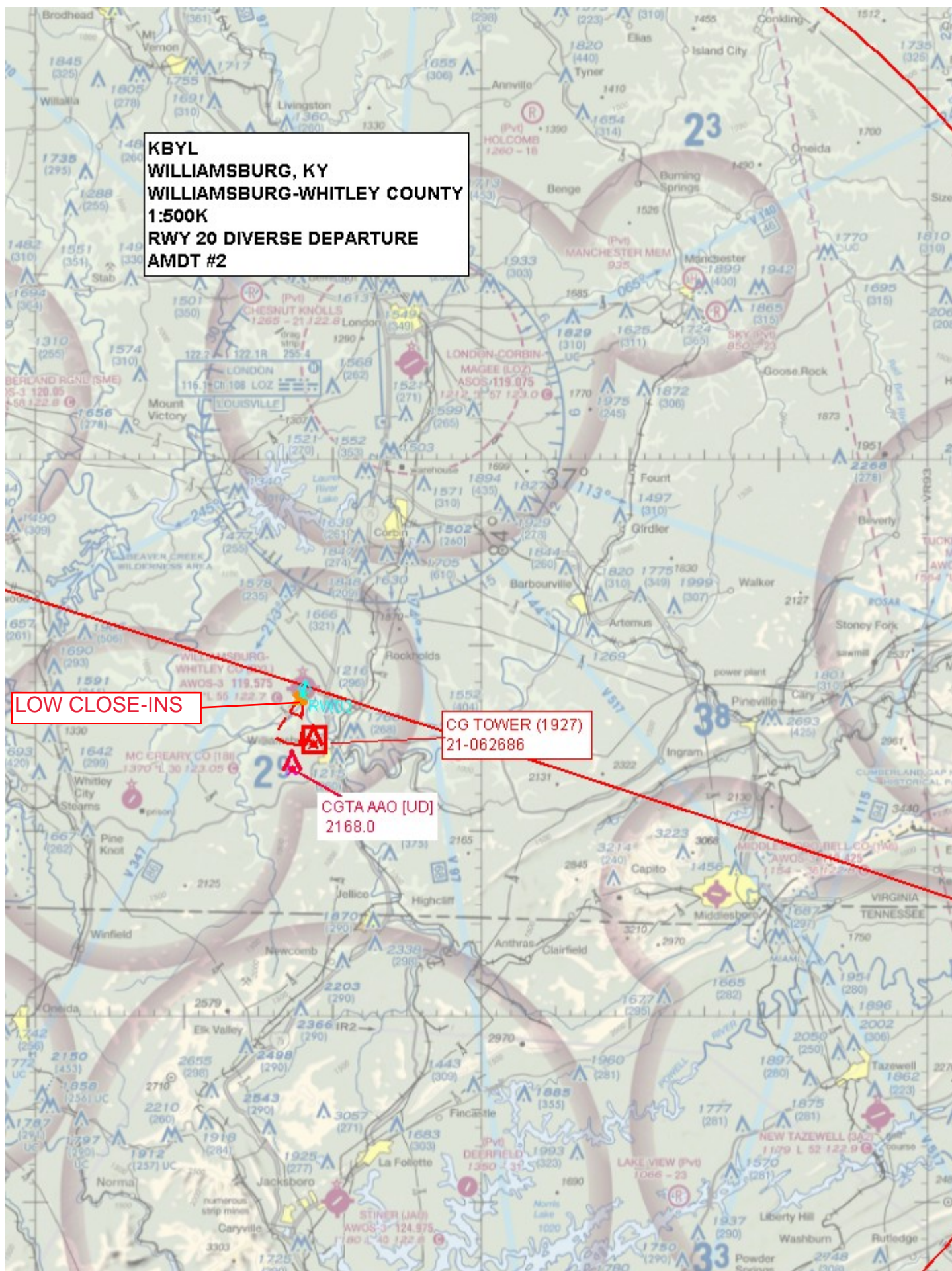


**KBYL**  
**WILLIAMSBURG, KY**  
**WILLIAMSBURG-WHITLEY COUNTY**  
**1:500K**  
**RWY 20 DIVERSE DEPARTURE**  
**AMDT #2**

**LOW CLOSE-INS**

**CG TOWER (1927)**  
**21-062686**

**CGTA AAO [UD]**  
**2168.0**





**KBYL**  
**WILLIAMSBURG, KY**  
**WILLIAMSBURG-WHITLEY COUNTY**  
**1:100K**  
**RWY 20 AMDT #2 VCOA**

VCA TOWER (1927)  
 21-062686

DIVERSE CO (UD)  
 2168.0



**KBYL**  
**WILLIAMSBURG, KY**  
**WILLIAMSBURG-WHITLEY COUNTY**  
**1:500K**  
**RWY 20 AMDT #2 VCOA**

VCA TOWER (1927)  
21-062686

DIVERSE CO [UD]  
2168.0

