

<b>Flight Procedure Tracking Form</b>		<b>Action:</b> FLIGHT CHECK	<b>Task Type:</b> IAP	<b>Date Open:</b> 07/22/2014	<b>Task #:</b> 2014072224192601001	<b>Request #:</b> 20140722241926
<b>Procedure:</b> RNAV (GPS) RWY 24 ORIG			<b>Airport ID:</b> KCPC	<b>Airport:</b> COLUMBUS COUNTY MUNI		<b>Reimbursable #:</b> NO
<b>City:</b> WHITEVILLE	<b>ST:</b> NC	<b>GPS #:</b>	<b>Estimated Chart Date:</b> 05/26/2016		<b>FICO #:</b>	
<b>Fac ID:</b> N/A		<b>Fac. Type:</b>			<b>Specialist:</b> DAVID DANNER	
<b>Procedure Review</b>						
	<b>Rec'd</b>	<b>Rel'd</b>	<b>Full Name</b>	<b>Comments</b>		
<b>Lead:</b>	10/20/2014					
<b>QA:</b>				4 2/1CTabaka		
<b>Liaison:</b>						
<b>Procedure Comments:</b>			ENROUTE-NON			
			<b>Remark Type:</b> INFORMATION			
CONTACT: MARLON ROBINSON/JULIE MORGAN: 405.954.3636/8568						

WAAS CH <b>86638</b> <b>W24A</b>	APP CRS <b>235°</b>	Rwy Idg <b>5500</b> TDZE <b>86</b> Apt Elev <b>99</b>
--	------------------------	---

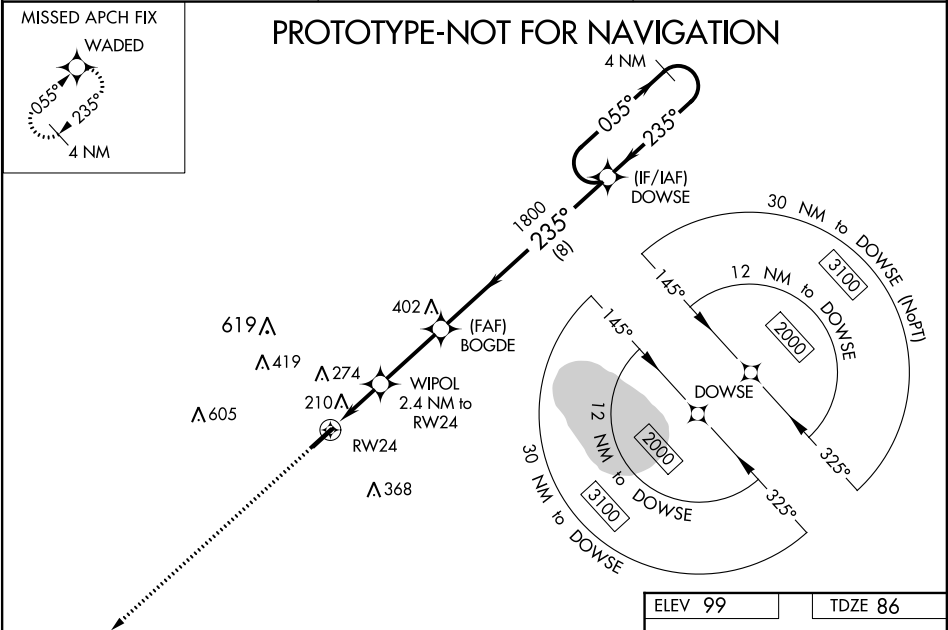
RNAV (GPS) RWY 24  
COLUMBUS COUNTY MUNI (CPC)

**⚠** For uncompensated Baro-VNAV systems, LNAV/VNAV NA below -1.5°C(5°F) or above 54°C (130°F). Baro-VNAV and VDP NA when using Elizabethtown altimeter setting.

**⚠** DME/DME RNP-0.3 NA. Helicopter visibility reduction below ¾ SM NA. When local altimeter setting not received, use Elizabethtown altimeter setting and increase all LPV DA to 427 FEET, LNAV/VNAV DA to 441 FEET AND ALL VISIBILITIES 1/4 MILE. INCREASE ALL MDA 60 FEET AND ALL CAT C AND D VISIBILITIES 1/4 MILE.

MISSED APPROACH: Climb to 2000 direct WADED and hold.

AWOS-3 <b>118.375</b>	MYRTLE BEACH APP CON ★ <b>119.2 350.3</b>	UNICOM <b>122.8 (CTAF) 0</b>
--------------------------	--	---------------------------------



ELEV 99      TDZE 86

2000 ↑      WADED

\* LNAV only

WIPOL 2.4 NM to RW24      BOGDGE 1800

\* 1 NM to RW24      235°      055° → 2000

RW24      1800      ← 235°

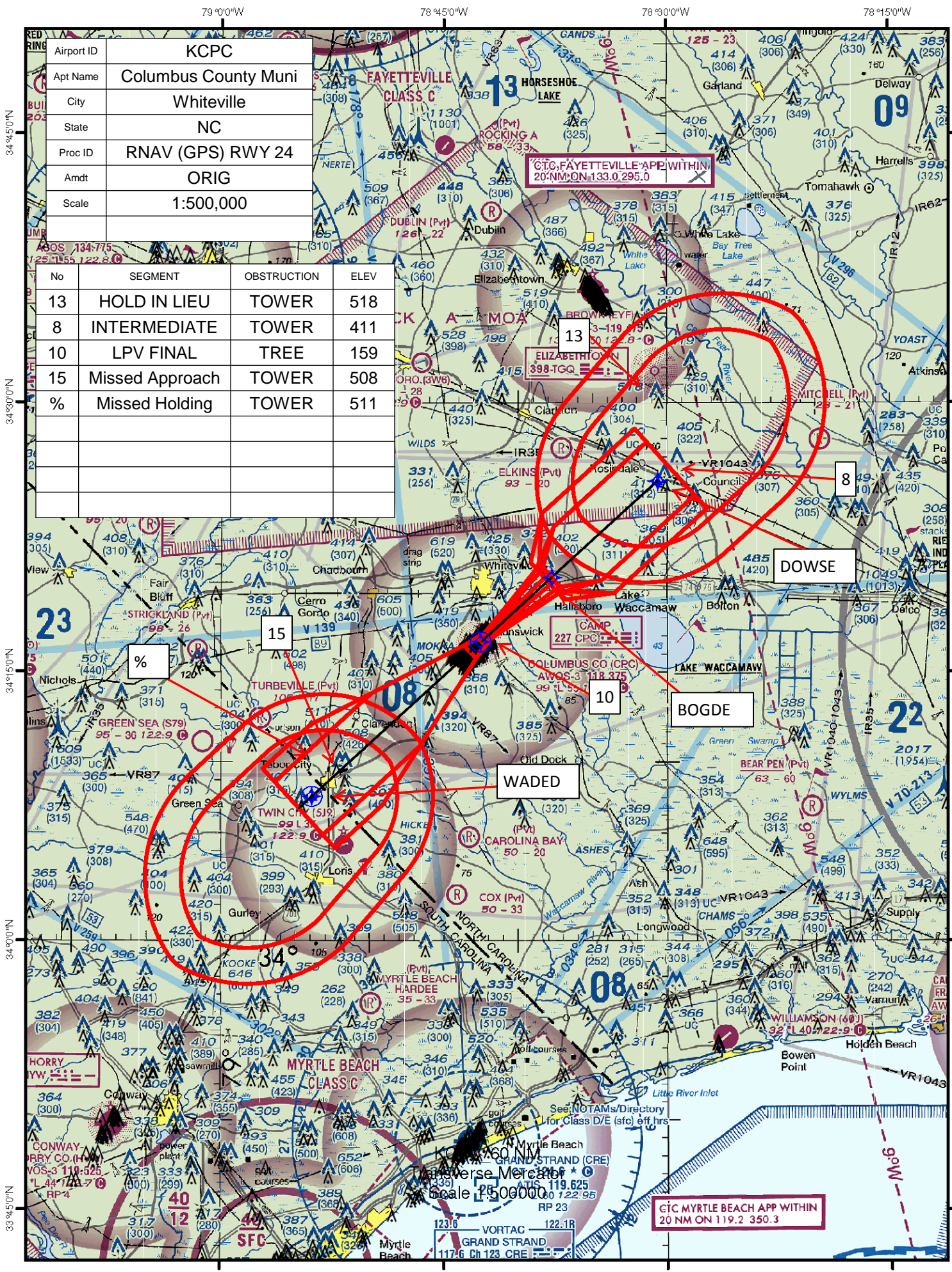
GP 3.00° TCH 40

1   1.5   2.9 NM   8 NM

CATEGORY	A	B	C	D
LPV DA	374 - 1 271 (300-1)			
LNAV/DA VNAV	388 - 1 285 (300-1 285)			
LNAV MDA	460-1 374 (400-1)	460-1 374 (400-1)		
CIRCLING	520-1 421 (500-1)	560-1 461 (500-1)	680-1 581 (600-1 2)	780-2 681 (700-2 4)

REIL Rwy 6 and 24 0

MIRL Rwy 6-24 0



Airport ID	KCPC
Apt Name	Columbus County Muni
City	Whiteville
State	NC
Proc ID	RNAV (GPS) RWY 24
Amdt	ORIG
Scale	1:500,000

No	SEGMENT	OBSTRUCTION	ELEV
13	HOLD IN LIEU	TOWER	518
8	INTERMEDIATE	TOWER	411
10	LPV FINAL	TREE	159
15	Missed Approach	TOWER	508
%	Missed Holding	TOWER	511

CIC FAYETTEVILLE APP WITHIN  
20 NM ON 133.0 295.0

13  
ELIZABETHTOWN  
398-TGQ

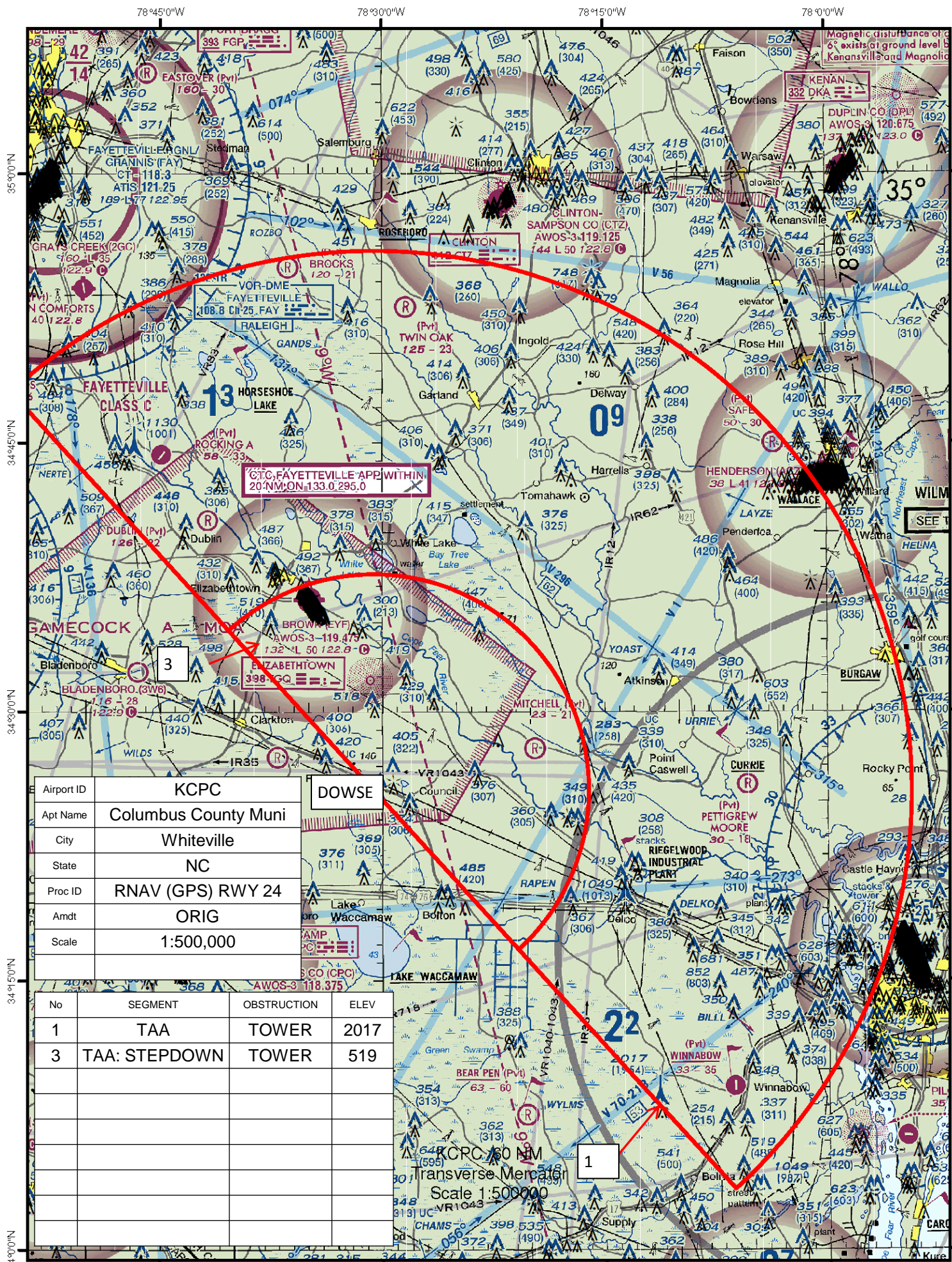
DOWSE

10  
BOGDE

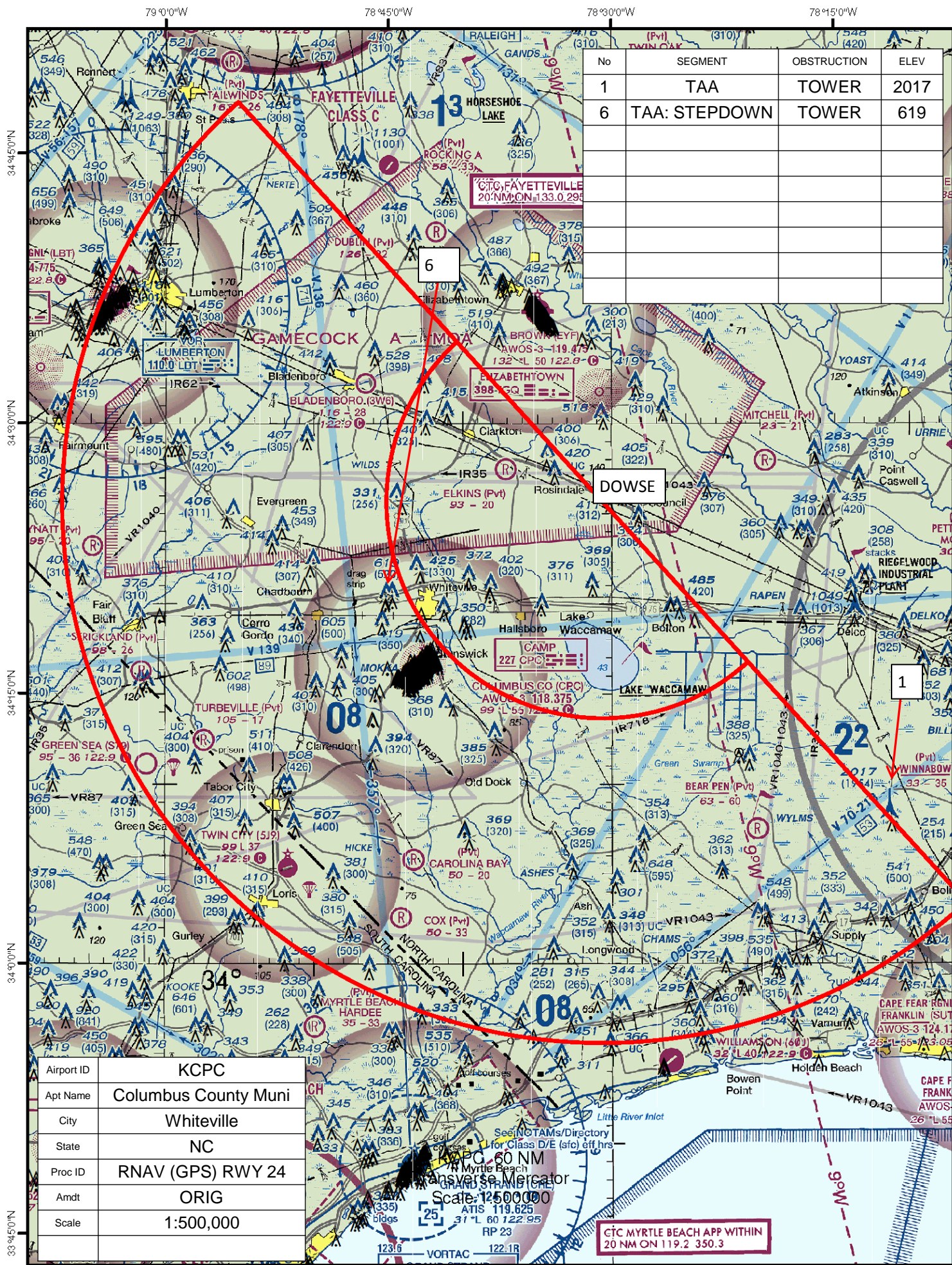
15  
WADED

CIC MYRTLE BEACH APP WITHIN  
20 NM ON 119.2 350.3







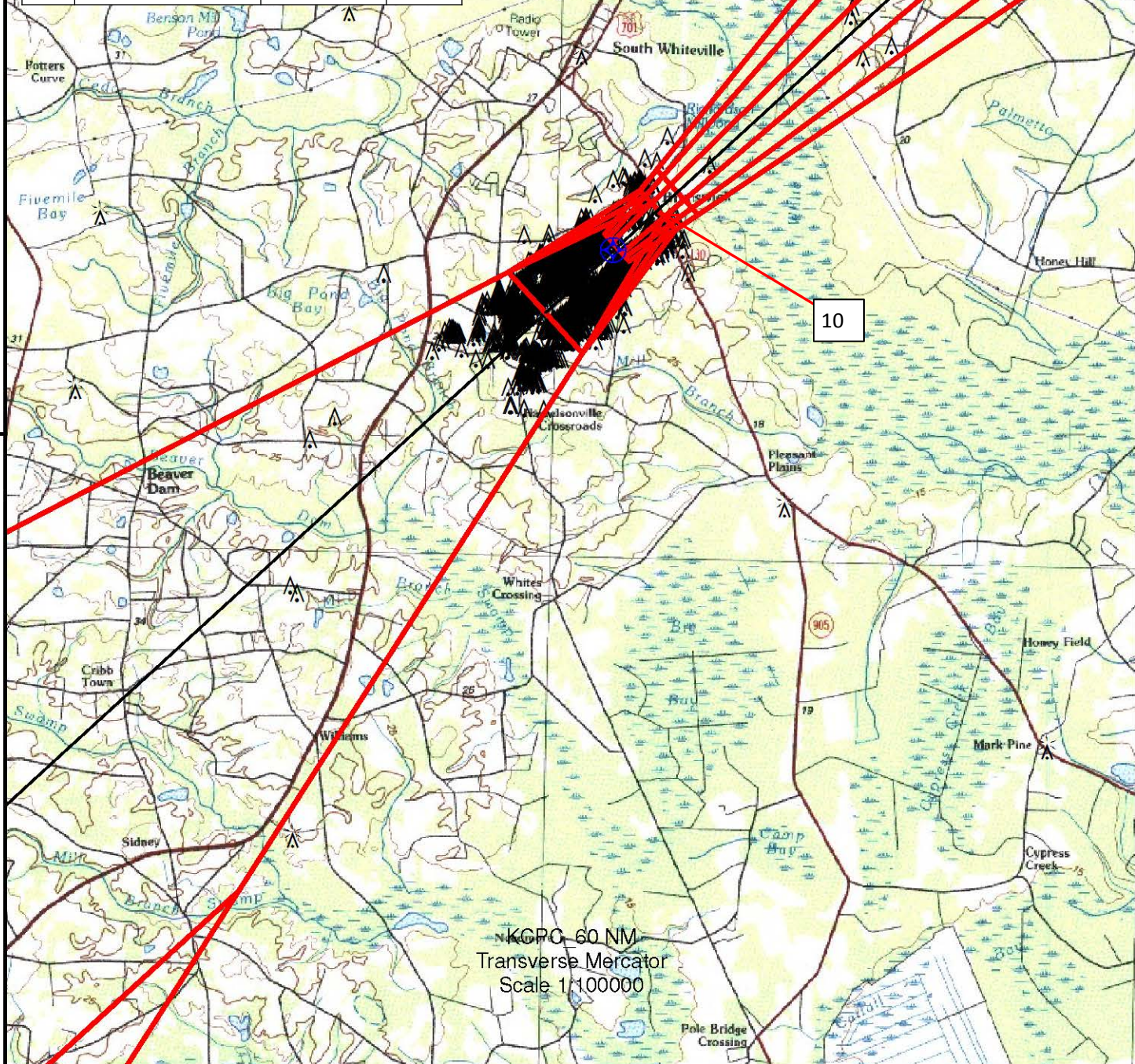




78°45'0"W

Airport ID	KCPC
Apt Name	Columbus County Muni
City	Whiteville
State	NC
Proc ID	RNAV (GPS) RWY 24
Amdt	ORIG
Scale	1:100,000

No	SEGMENT	OBSTRUCTION	ELEV
10	LPV FINAL	TREE	159
10	LPV Missed Pen	TREE	159



34°15'0"N

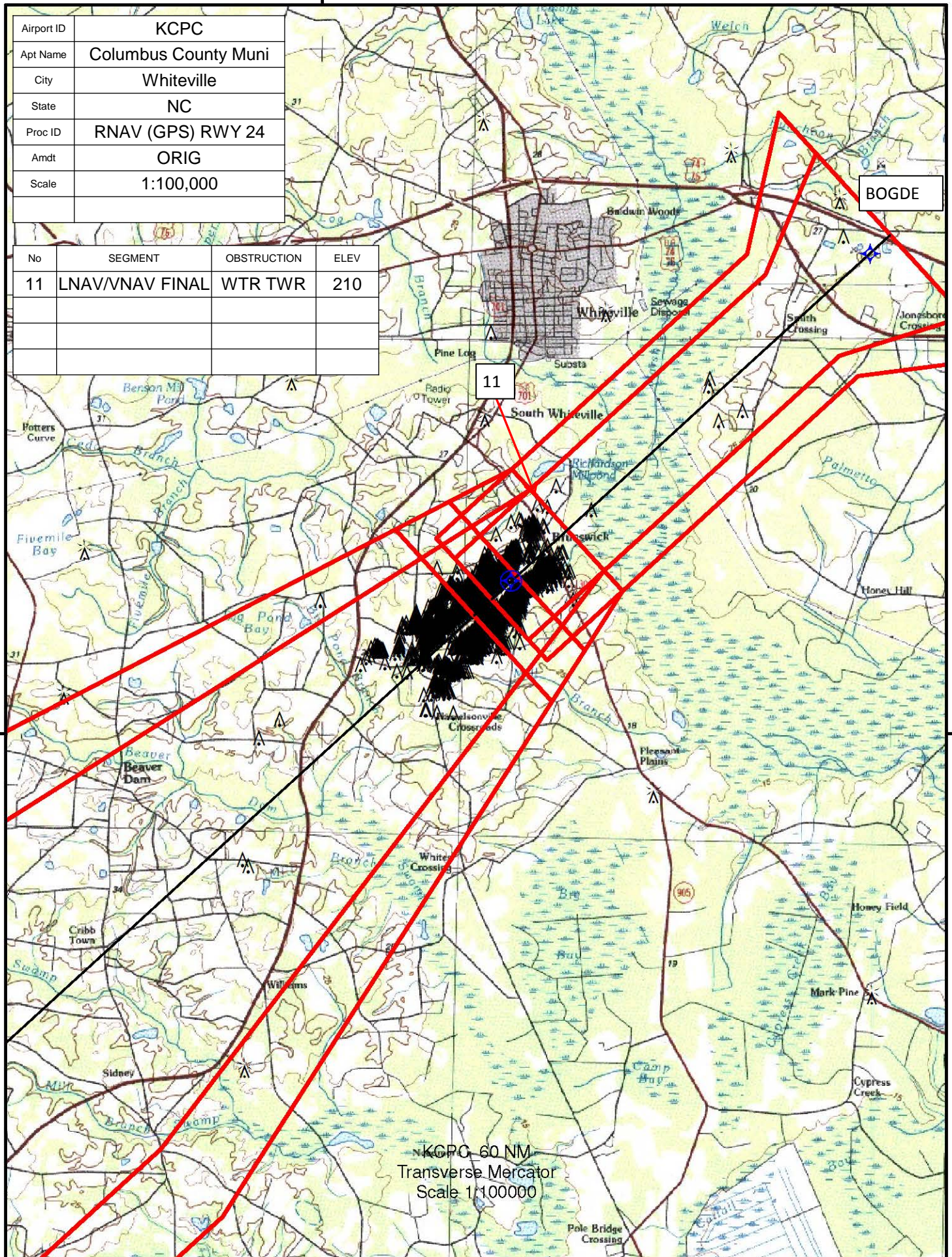


78°45'0"W

Airport ID	KCPC
Apt Name	Columbus County Muni
City	Whiteville
State	NC
Proc ID	RNAV (GPS) RWY 24
Amdt	ORIG
Scale	1:100,000

No	SEGMENT	OBSTRUCTION	ELEV
11	LNAV/VNAV FINAL	WTR TWR	210

34°15'0"N

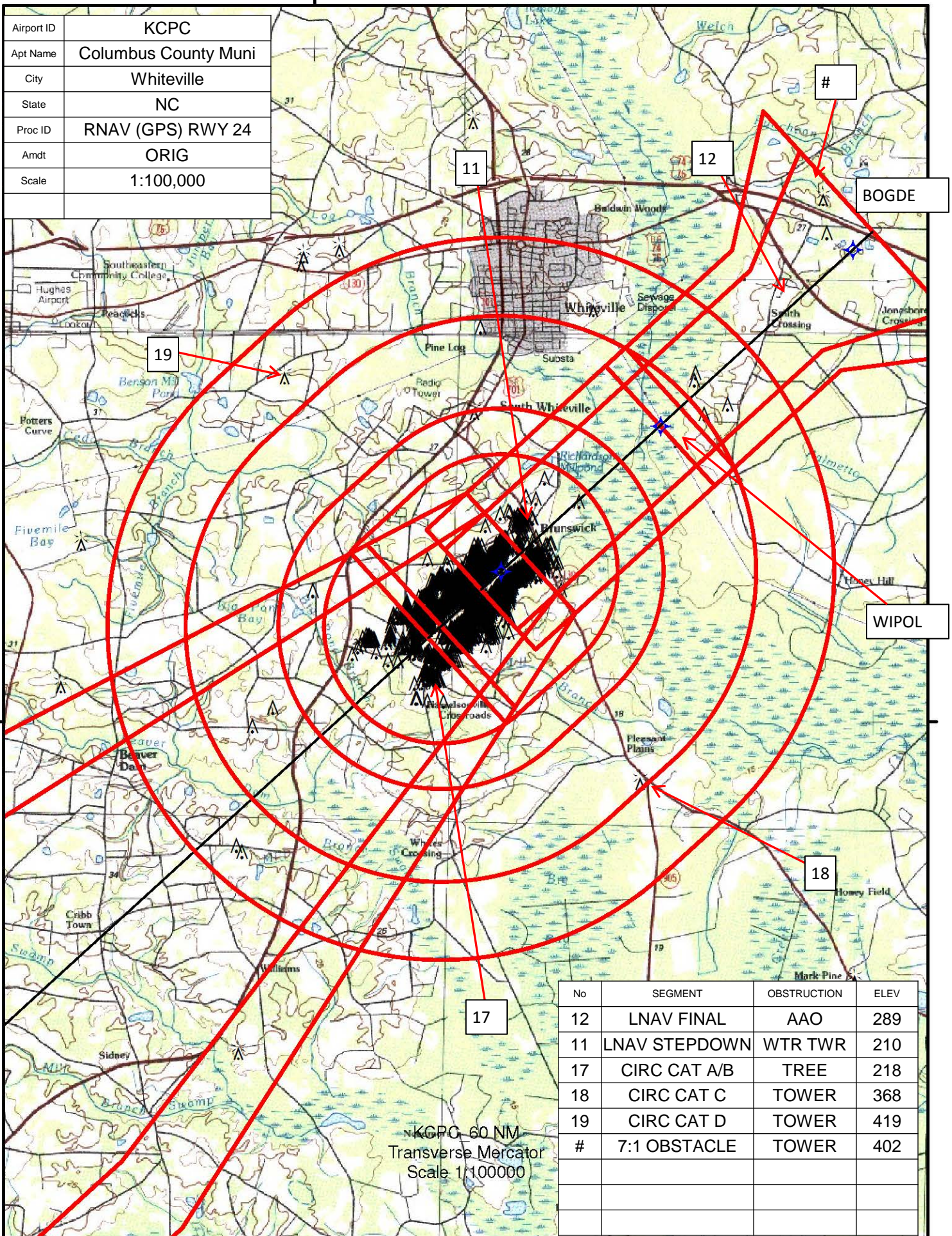




78°45'0"W

Airport ID	KCPC
Apt Name	Columbus County Muni
City	Whiteville
State	NC
Proc ID	RNAV (GPS) RWY 24
Amdt	ORIG
Scale	1:100,000

34°15'0"N





# TERMINAL AIRSPACE DATA REQUIREMENTS

CITY: **WHITEVILLE**

STATE: **NC**

AIRPORT NAME: **COLUMBUS COUNTY MUNI**

ID: **KCPC**

PROCEDURE: **RNAV (GPS) RWY 24**

AMDT: **ORIG**

DOCKET#: **NOT REQUIRED**  
(96-AXX-X/Required/Not Required)

**ALL DIST TO 1/100 NM; ELEV TO NEAREST FT; COORD TO 1/100 SEC; DEG TO 1/100 DG.**

- |  |                                 |                                |               |
|--|---------------------------------|--------------------------------|---------------|
| 1. Distance from   | <u>THLD</u>                     | to 1000' point                 | <u>3.02</u>   |
| (Enter THLD, FAF, ARP, FACILITY, as appropriate)                           |                                 |                                |               |
| 2. Width of  | <u>FINAL</u>                    | segment at 1000' point         | <u>1.20</u>   |
| (Enter appropriate segment, final, intermediate, etc.)                     |                                 |                                |               |
| 3. True Course of  | <u>FINAL</u>                    | segment containing 1000' point | <u>227.68</u> |
| 4. High Terrain in   | <u>FINAL</u>                    | segment containing 1000' point | <u>89</u>     |
| 5. Distance from   | <u>THLD</u>                     | to 1500' point                 | <u>4.90</u>   |
| (If 1500' point in PT maneuvering area or holding pattern note in remarks) |                                 |                                |               |
| 6. Width of  | <u>FINAL</u>                    | segment at 1500' point         | <u>1.76</u>   |
| 7. True Course of  | <u>FINAL</u>                    | segment containing 1500' point | <u>227.75</u> |
| 8. High Terrain in   | <u>FINAL</u>                    | segment containing 1500' point | <u>122</u>    |
| 9. Threshold Coordinates (if straight-in) ...                              | <u>341640.66N / 0784229.74W</u> |                                |               |
| 10. ARP Coordinates .....  | <u>341622.30N / 0784254.00W</u> |                                |               |
| 11. Runway Approach End and distance furthest from ARP .....               | RWY                             | <u>24</u>                      |               |
|  | Distance                        | <u>0.45</u>                    | NM            |
| 12. FAF Coordinates .....  | <u>342015.31N / 0783745.84W</u> |                                |               |

**REMARKS: Approach/Drawing attached.**

**TAA: DOWSE (IF/IAF) 342538.79N-0783036.77W RADIUS: 30 NM**