

Flight Procedure Tracking Form		Action: FLIGHT CHECK	Task Type: IAP	Date Open: 12/07/2016	Task #: 2014071726505823001	Request #: 20140717265058
Procedure: RNAV (GPS) RWY 27 AMDT 0A			Airport ID: KHHG	Airport: HUNTINGTON MUNI		Reimbursable #: NO
City: HUNTINGTON	ST: IN	GPS #:	Estimated Chart Date: 04/27/2017		FICO #:	
Fac ID: N/A		Fac. Type:			Specialist: JAMES ROGERS	
Procedure Review						
	Rec'd	Rel'd	Full Name	Comments		
Lead:	06/21/2016			QUALITY Digitally signed by		
QA:				24 DAVID W SAUER		
Liaison:				CHECKED Jan 09, 2017		
Procedure Comments: ENROUTE-NON Remark Type: INFORMATION UPDATED CIRCLING AREAS. CANCEL FDC 6/1010 ON CHART DATE. ACTIVE DATA USED FOR KHHG AIRPORT. ACTIVE DATA USED FOR RUNWAY 27. ASSIGNED MAGVAR: 3W 1990. CONTACT: STEVE VARGAS 405.954.0695 / DANIEL OLSON 405.954.3255, AJV-5420 LEADS						

TERMINAL AIRSPACE DATA REQUIREMENTS

CITY: **HUNTINGTON**

STATE: **IN**

AIRPORT NAME: **HUNTINGTON MUNI**

ID: **KHHG**

PROCEDURE: **RNAV (GPS) RWY 27**

AMDT: **ORIG A**

DOCKET#: **NOT REQUIRED**
(96-AXX-X/Required/Not Required)

ALL DIST TO 1/100 NM; ELEV TO NEAREST FT; COORD TO 1/100 SEC; DEG TO 1/100 DG.

- | | | | |
|---|--|--------------------------------|---------------|
| 1. Distance from | <u>THLD</u> | to 1000' point | <u>2.87</u> |
| <small>(Enter THLD, FAF, ARP, FACILITY, as appropriate)</small> | | | |
| 2. Width of | <u>FINAL</u> | segment at 1000' point | <u>1.20</u> |
| <small>(Enter appropriate segment, final, intermediate, etc.)</small> | | | |
| 3. True Course of | <u>FINAL</u> | segment containing 1000' point | <u>272.27</u> |
| 4. High Terrain in | <u>FINAL</u> | segment containing 1000' point | <u>814</u> |
| 5. Distance from | <u>THLD</u> | to 1500' point | <u>4.54</u> |
| <small>(If 1500' point in PT maneuvering area or holding pattern note in remarks)</small> | | | |
| 6. Width of | <u>FINAL</u> | segment at 1500' point | <u>2.13</u> |
| 7. True Course of | <u>FINAL</u> | segment containing 1500' point | <u>272.27</u> |
| 8. High Terrain in | <u>FINAL</u> | segment containing 1500' point | <u>814</u> |
| 9. Threshold Coordinates (if straight-in) ... | <u>405109.56N</u> / <u>0852652.91W</u> | | |
| 10. ARP Coordinates | <u>405110.50N</u> / <u>0852725.40W</u> | | |
| 11. Runway Approach End and distance furthest from ARP | RWY | <u>9</u> | |
| | Distance | <u>0.41</u> | NM |
| 12. FAF Coordinates | <u>405059.01N</u> / <u>0852058.22W</u> | | |

REMARKS: Approach/Drawing attached.

APP CRS
275°

Rwy Idg
TDZE
Apt Elev

5003
806
806

RNAV (GPS) RWY 27
HUNTINGTON MUNI (HHG)

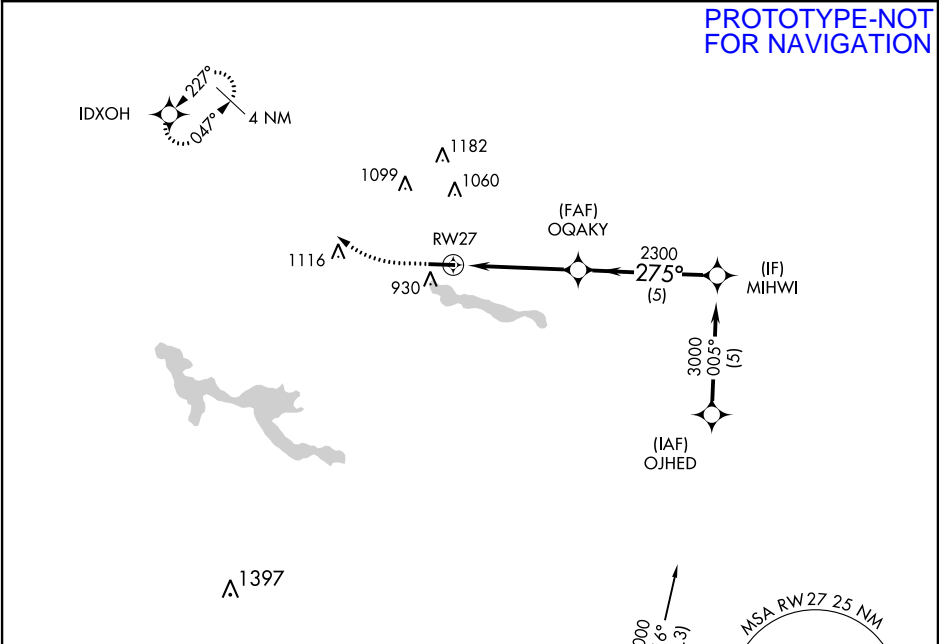
▼

▲

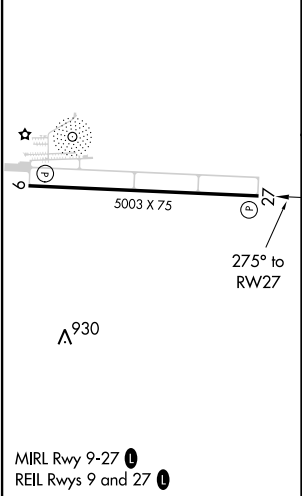
DME/DME RNP-0.3 NA. STRAIGHT-IN RWY 27 NA AT NIGHT, CIRCLING RWY 27 NA AT NIGHT.

MISSED APPROACH: Climb to 1700 then climbing right turn to 2600 direct IDXOH WP and hold.

AWOS-3PT 126.575	FORT WAYNE APP CON 127.2 284.6	UNICOM 122.8 (CTAF) 0
---------------------	-----------------------------------	--------------------------



ELEV 806	TDZE 806
----------	----------



PROCEDURE NA FOR ARRIVALS AT AJAYS ON V221 SOUTHBOUND.

VGSI and descent angles not coincident (VGSI Angle 3.00/TCH 49).

1700 2600 IDXOH

3000 01.6° (11.3) AJAYS

MSA RW27 25 NM 2700

3000 275° MIHWI

Procedure Turn NA

2300 3.04° TCH 45

4.5 NM 5 NM

CATEGORY	A	B	C	D
LNAV MDA	1200-1 394 (400-1)	1200-1½ 394 (400-1½)	1200-1½ 394 (400-1½)	1200-1½ 394 (400-1½)
CIRCLING	1300-1 494 (500-1)	1460-1¾ 654 (700-1¾)	1540-2½ 734 (800-2½)	1540-2½ 734 (800-2½)

EC-2, 08 DEC 2016 to 05 JAN 2017

EC-2, 08 DEC 2016 to 05 JAN 2017

OLD

HUNTINGTON, INDIANA

AL-5767 (FAA)

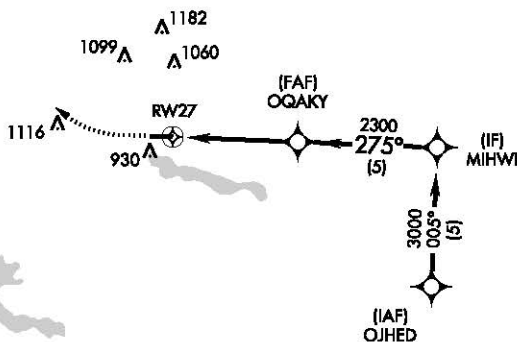
RNAV (GPS) RWY 27 HUNTINGTON MUNI (HHG)

APP CRS 275°	Rwy Idg 5003
	TDZE 804
	Apt Elev 806

MISSED APPROACH: Climb to 1700 then climbing right turn to 2600 direct IDXOH WP and hold.

FORT WAYNE APP CON
127.2 284.6

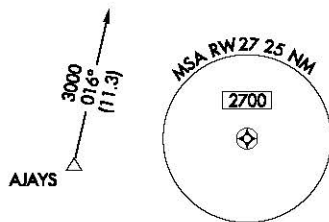
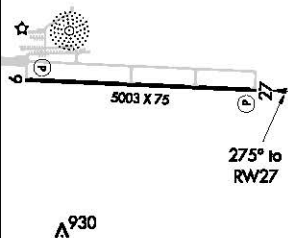
UNICOM
122.8 (CTAF) 0






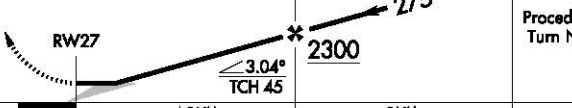
A1397

ELEV 806

TDZE 804



AJAYS

1700	2600	IDXOH	VGSi and descent angles not coincident (VGSi Angle 3.00/TCH 45).		MIHWI
			OGAKY	2300	3000
			275°		Procedure Turn NA
			≤ 3.04° TCH 45		
			4.5 NM		5 NM
CATEGORY	A	B	C	D	
LNAV MDA	1200-1 396 (400-1)				1200-1¼ 396 (400-1¼)
CIRCLING	1320-1	514 (600-1)	1320-1½ 514 (600-1½)	1360-2 554 (600-2)	

HUNTINGTON, INDIANA
Orig 11125

40°51'N-85°27'W

HUNTINGTON MUNI (HHG)
RNAV (GPS) RWY 27

EC-2, 20 OCT 2011 to 17 NOV 2011

EC-2, 20 OCT 2011 to 17 NOV 2011

