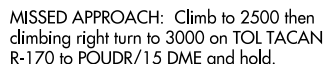
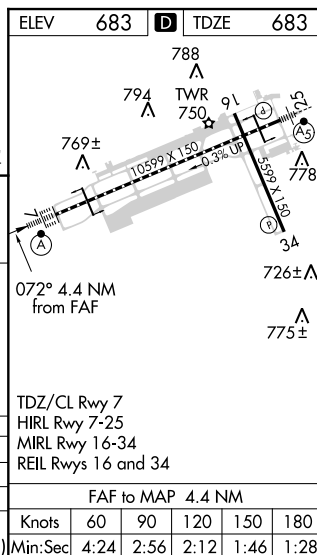
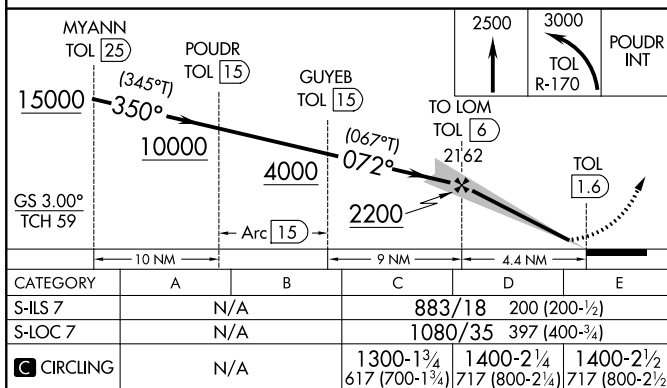
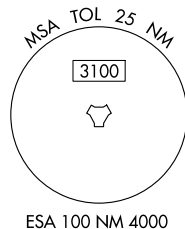
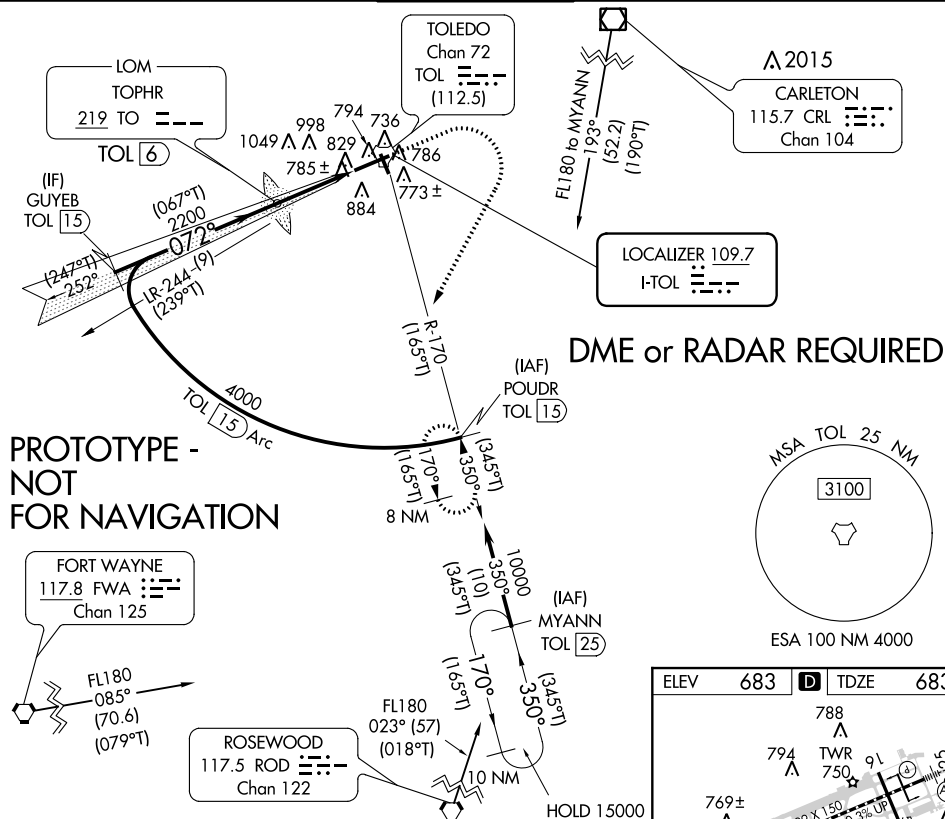


<b>Flight Procedure Tracking Form</b>		<b>Action:</b> FLIGHT CHECK	<b>Task Type:</b> IAP	<b>Date Open:</b> 09/19/2016	<b>Task #:</b> 2014071726505822002	<b>Request #:</b> 20140717265058
<b>Procedure:</b> HI - ILS OR LOC RWY 7 AMDT 8A			<b>Airport ID:</b> KTOL	<b>Airport:</b> TOLEDO EXPRESS		<b>Reimbursable #:</b> NO
<b>City:</b> TOLEDO	<b>ST:</b> OH	<b>GPS #:</b>	<b>Estimated Chart Date:</b> 04/27/2017		<b>FICO #:</b>	
<b>Fac ID:</b> TOL		<b>Fac. Type:</b> ILS			<b>Specialist:</b> SEAN BARBEE	
<b>Procedure Review</b>						
	<b>Rec'd</b>	<b>Rel'd</b>	<b>Full Name</b>	<b>Comments</b>		
<b>Lead:</b>	09/19/2016			<div style="text-align: center;"> <div>QUALITY</div> <div>4</div> <div>CHECKED</div> </div> 1/13CTabaka		
<b>QA:</b>						
<b>Liaison:</b>						
<b>Procedure Comments:</b> ENROUTE-NON <b>Remark Type:</b> INFORMATION  ABBREVIATED AMENDMENT  HARD DATE - NAVAID ROTATION OF FORT WAYNE (FWA) VORTAC: FROM: 0E/1965 TO: 6W/2020  TACR - CARLETON (CRL) VORTAC CHANGED TO CRL VOR/DME  PENDING DATA USED FOR: FWA VORTAC, CRL VOR/DME  ACTIVE DATA USED FOR KTOL, I-TOL, TOL TACAN, ROD VORTAC  CONTACT: DON LANIER/PATRICK MULQUEEN, 405.954.8242/4073						

HI-ILS or LOC RWY 7  
TOLEDO EXPRESS (TOL)

CLNC DEL  
**121.75 348.6**



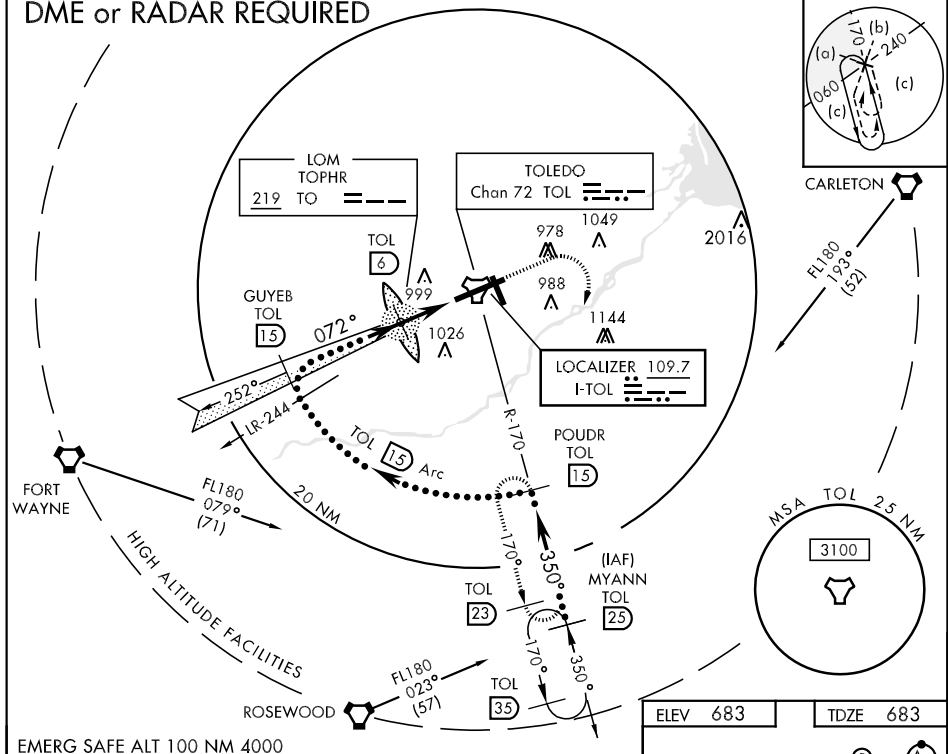
# INFORMATION ONLY

TOLEDO, OHIO

HI-ILS or LOC RWY 7

LOC I-TOL <u>109.7</u>		APCH CRS <b>072°</b>	Rwy Idg <b>10,599</b> TDZE <b>683</b> Arpt Elev <b>683</b>	JAL-184 [USAF]	TOLEDO EXPRESS (KTOL)			
<div><div><div>▼</div><div>* When ALS inop increase CAT E RVR to 40, vis to ¾ mile. ** When ALS inop increase CAT E vis to 1½ miles.</div></div></div>				ALSF-2 <div><div>A</div><div><div><div></div><div></div><div></div><div></div><div></div><div></div><div></div><div></div><div></div><div></div></div></div></div>	MISSED APPROACH: Climb to 2500, then climbing right turn to 3000 via TOL R-170 to POUDR and hold.			
ATIS <b>118.75 290.225</b>		TOLEDO APP CON <b>126.1 317.55</b>		TOLEDO TOWER <b>118.1 285.4</b>		GND CON <b>121.9 348.6</b>	CLNC DEL <b>121.75 348.6</b>	ASR

## DME or RADAR REQUIRED



EMERG SAFE ALT 100 NM 4000

MYANN R-170 [25] POUDR R-170 [15] LR-244 [15] INTCP LCZR 15,000 10,000 4000 2200 GS 3.00° TCH 59 350° 072° 4.4 NM			2500 3000 POUDR TOL R-170	TACAN
CATEGORY	C	D	E	
S-ILS 7*	883/18	200 (200-¾)	883/24 200 (200-½)	
S-LOC 7**	1080/24 397 (400-½)	1080/40 397 (400-¾)	1080/50 397 (400-1)	
CIRCLING	1180-1½ 497 (500-1½)	1240-2 557 (600-2)	1400-2½ 717 (800-2½)	
FAF to LOC MAP 4.4 NM				
Knots	120	140	160	180 200
Min:Sec	2:12	1:53	1:39	1:28 1:19

TOLEDO, OHIO

41°35'N-83°48'W

TOLEDO EXPRESS (KTOL)

Amdt 8 13178

# INFORMATION ONLY

HI-ILS or LOC RWY 7

EC-2, 08 DEC 2016 to 05 JAN 2017

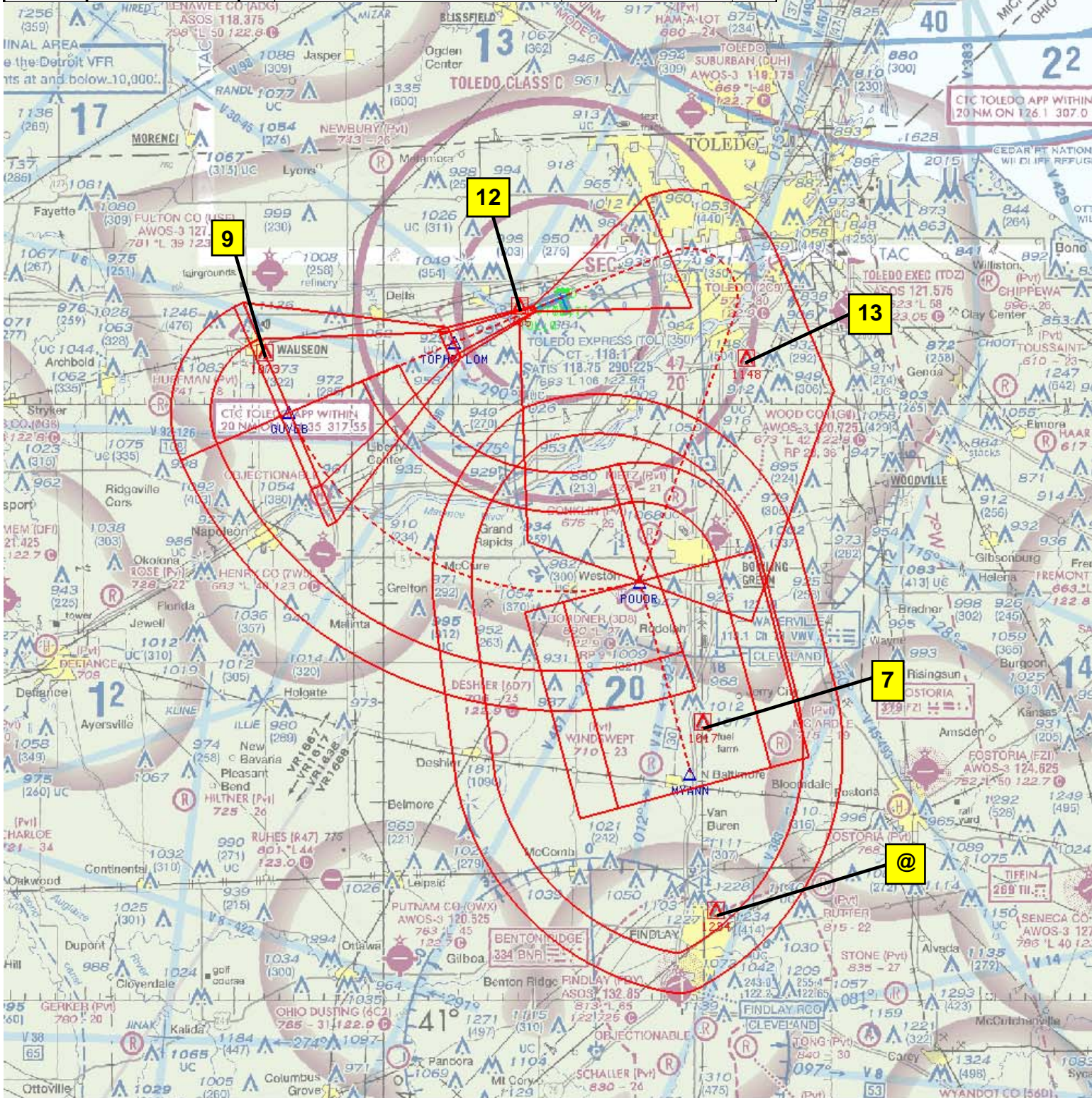
EC-2, 08 DEC 2016 to 05 JAN 2017



NM 7 14 21 28 35 42 49  
FT 42000 84000 126000 168000 210000 252000 294000

fposbb | tol | hi07 (PROD) | 28 Dec 2016 12:20:12 | 1" = 41666.7 feet (MAP) | 1229 0 203

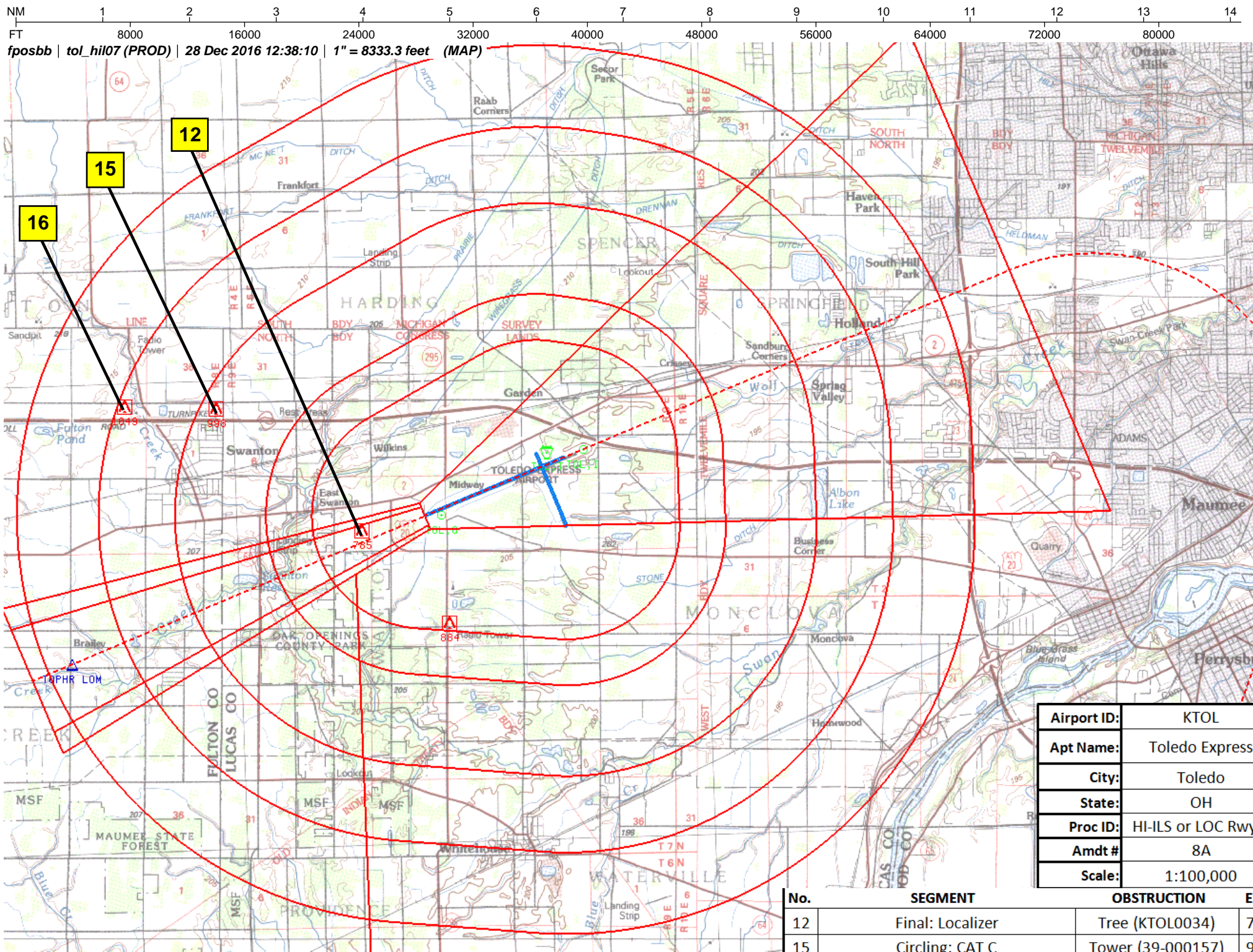
Airport ID:	KTOL				
Apt Name:	Toledo Express	No.	SEGMENT	OBSTRUCTION	ELEV
City:	Toledo	7	Initial: MYANN - POUDR	Tower (39-000129)	1017
State:	OH	9	Arc Initial: POUDR - GUYEB Intermediate: GUYEB - TOPHR LOM	Tower (39-001097)	1073
Proc ID:	HI-ILS or LOC Rwy 7	12	Final: Localizer	Tree (KTOL0034)	785
Amdt #	8A	13	Missed Approach: level surface	Tower (39-000655)	1148
Scale:	1:500,000	@	Missed Approach: Holding at POUDR	Tower (39-020159)	1234











Airport ID:	KTOL
Apt Name:	Toledo Express
City:	Toledo
State:	OH
Proc ID:	HI-ILS or LOC Rwy 7
Amdt #	8A
Scale:	1:100,000

No.	SEGMENT	OBSTRUCTION	ELEV
12	Final: Localizer	Tree (KTOL0034)	785
15	Circling: CAT C	Tower (39-000157)	998
16	Circling: CATs D and E	Tower (39-003822)	1049