

Flight Procedure Tracking Form		Action: FLIGHT CHECK	Task Type: IAP	Date Open: 09/19/2016	Task #: 2014071726505822001	Request #: 20140717265058
Procedure: HI - ILS OR LOC RWY 25 AMDT 5A				Airport ID: KTOL	Airport: TOLEDO EXPRESS	Reimbursable #: NO
City: TOLEDO	ST: OH	GPS #:	Estimated Chart Date: 04/27/2017		FICO #:	
Fac ID: BQE		Fac. Type: ILS			Specialist: SEAN BARBEE	
Procedure Review						
	Rec'd	Rel'd	Full Name	Comments		
Lead:	09/19/2016					
QA:				4 1/13CTabaka		
Liaison:						
Procedure Comments: ENROUTE-NON Remark Type: INFORMATION ABBREVIATED AMENDMENT HARD DATE - NAVAID ROTATION OF FORT WAYNE (FWA) VORTAC: FROM: 0E/1965 TO: 6W/2020 TACR - CARLETON (CRL) VORTAC CHANGED TO CRL VOR/DME PENDING DATA USED FOR: FWA VORTAC, CRL VOR/DME ACTIVE DATA USED FOR KTOL, I-BQE, TOL TACAN, ROD VORTAC, VWV VOR/DME CONTACT: DON LANIER/PATRICK MULQUEEN, 405.954.8242/4073						

TOLEDO, OHIO

AL-184 (FAA)

SPECIAL FIG

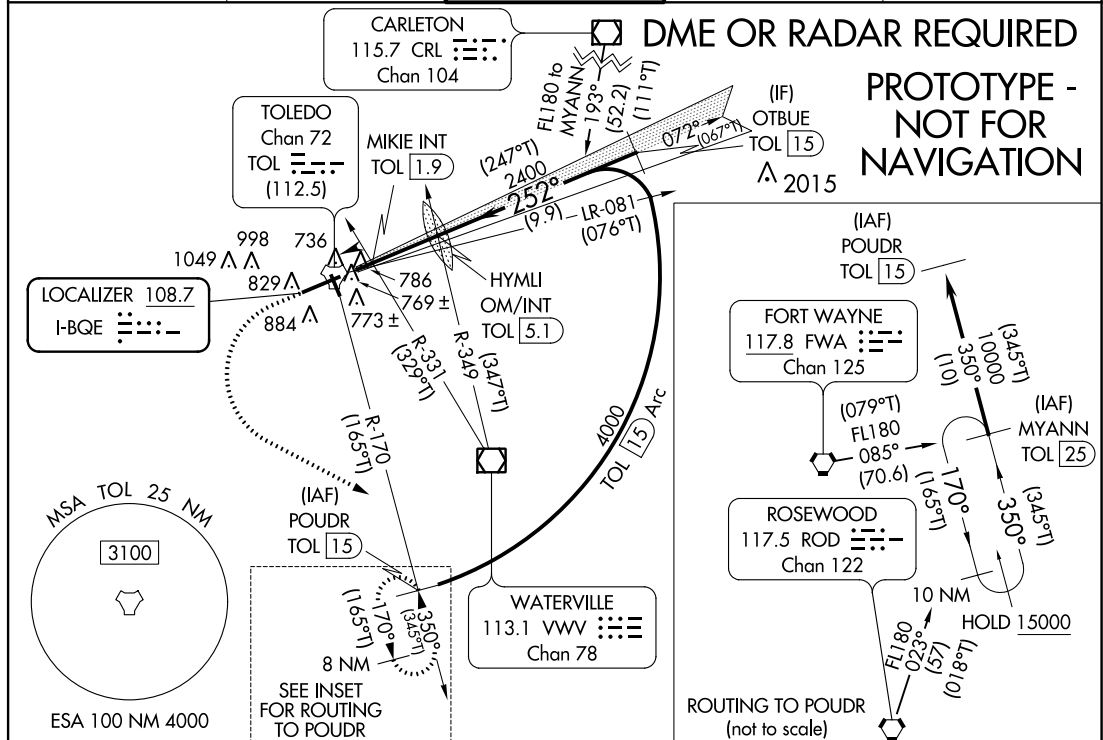
LOC I-BQE 108.7	APP CRS 252°	Rwy Idg 10599 TDZE 678 Apt Elev 683
---------------------------	------------------------	--

HI-ILS or LOC RWY 25

TOLEDO EXPRESS (TOL)

▼ For inop ALS, increase S-ILS 25 Cat E visibility to ¾ SM ▲ and increase S-LOC all Cats visibility to 1½ SM; ASR MIKIE fix minimums: increase S-LOC 25 all Cats visibility to 1 SM.	MALSR 	MISSED APPROACH: Climb to 2500 then climbing left turn to 3000 via TOL TACAN R-170 to POWDR/TOL 15 DME and hold.
--	------------------	---

ATIS 118.75 290.225	TOLEDO APP CON 134.35 317.55	ASHEVILLE TOWER 118.1 285.4	GND CON 121.9 348.6	CLNC DEL 121.75 348.6
-------------------------------	--	---------------------------------------	-------------------------------	---------------------------------



ELEV 683	D	TDZE 678	2500	3000	POWDR INT	VGSI and ILS glidepath not coincident (VGSI Angle 3.00/TCH 55)
			<p>* LOC only</p> <p>POWDR INT</p> <p>HYMLI OM TOL 5.1</p> <p>MIKIE INT TOL 1.9</p> <p>OTBUE TOL 15</p> <p>POWDR TOL 15</p> <p>MYANN TOL 25</p> <p>252° 15000</p> <p>252° 10000</p> <p>252° 4000</p> <p>252° 2400</p> <p>252° 1240*</p> <p>1.7 NM 3.3 NM 9.9 NM Arc 15 10 NM</p>			
<p>TDZ/CL Rwy 7</p> <p>HIRL Rwy 7-25</p> <p>MIRL Rwy 16-34</p> <p>REIL Rwy 16 and 34</p>			<p>GS 3.00°</p> <p>TCH 57</p>			
<p>FAF to MAP 5 NM</p>			<p>MIKIE FIX MINIMUMS</p>			
<p>Knots 60 90 120 150 180</p> <p>Min:Sec 5:00 3:20 2:30 2:00 1:40</p>			<p>S-LOC 25</p> <p>CIRCLING</p>			
			<p>S-ILS 25</p> <p>S-LOC 25</p> <p>CIRCLING</p>			
			<p>878-½ 200 (200-½)</p> <p>1240-¼ 562 (600-¼)</p> <p>1360-2 677 (700-2)</p> <p>1400-2¼ 717 (800-2¼)</p> <p>1400-2½ 717 (800-2½)</p>			
			<p>1020-⅝ 342 (400-⅝)</p> <p>1360-2 677 (700-2)</p> <p>1400-2¼ 717 (800-2¼)</p> <p>1400-2½ 717 (800-2½)</p>			

TOLEDO, OHIO

Amdt 5A SPECIAL FIG

41°35'N-83°48'W

TOLEDO EXPRESS (TOL)

HI-ILS or LOC RWY 25

AUTOMATED AL-184 HI-ILS OR LOC RWY 25

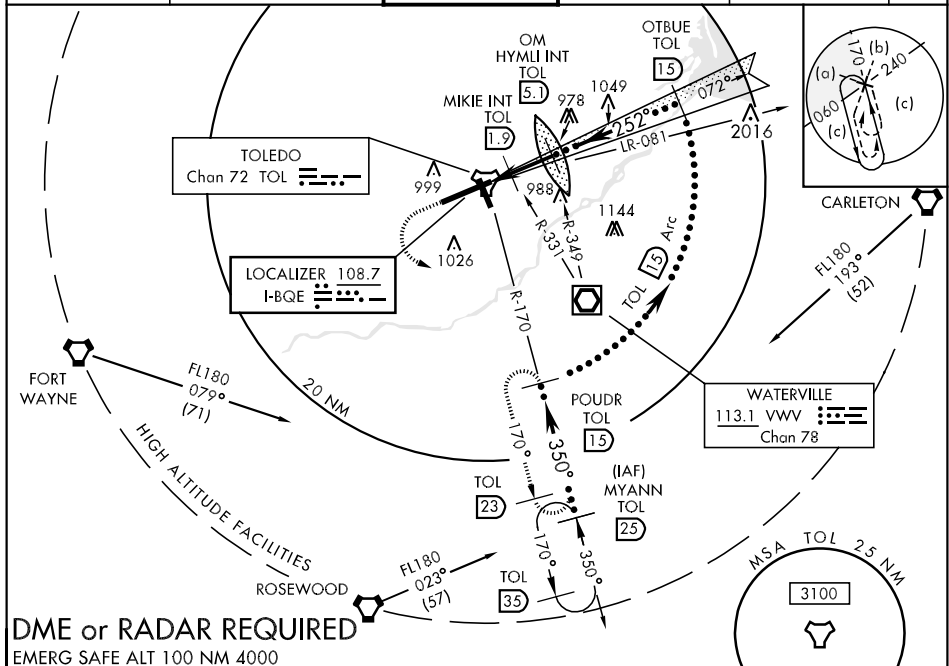
EC-2
DECEMBER 23, 2016
COMPILER: LS
REVIEWER:
DBL CHKR:
EFF: FIG

TOLEDO, OHIO

HI-ILS or LOC RWY 25

LOC I-BQE 108.7	APCH CRS 252°	Rwy Idg 10,599 TDZE 678 Arpt Elev 683	JAL-184 [USAF]	TOLEDO EXPRESS (KTOL)
* When ALS inop increase CAT E vis to $\frac{3}{4}$ mile. ** When ALS inop increase CAT E vis to $1\frac{1}{4}$ mile.			MALSR	MISSED APPROACH: Climb to 2500 then climbing left turn to 3000 via TOL R-170 to POWDR (TOL R-170/15 DME) and hold.

ATIS 118.75 290.225	TOLEDO APP CON 126.1 317.55	TOLEDO TOWER 118.1 285.4	GND CON 121.9 348.6	CLNC DEL 121.75 348.6	ASR
-------------------------------	---------------------------------------	------------------------------------	-------------------------------	---------------------------------	-----



DME or RADAR REQUIRED

EMERG SAFE ALT 100 NM 4000

2500

↑

3000

↙

TOL R-170

POUDR

HYMLI INT/OM

5.1

LR-081 OTBUE TOL

15

POUDR R-170

15

MYANN R-170

25

VGSI and descent angles not coincident

MIKIE INT TOL 1.9

INTCP LCZR

350°

15,000

10,000

350°

GS 3.00° TCH 52

TACAN TOL 0.2

2315

2400

4000

15

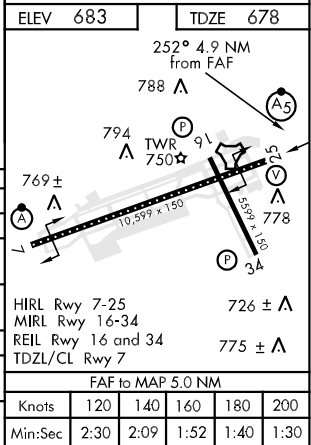
Arc

1240

1.7 NM

3.3 NM

CATEGORY	C	D	E
S-ILS 25*	878-½	200	(200-½)
S-LOC 25	1240-1 562 (600-1)	1240-¼ 562 (600-¼)	1240-½ 562 (600-½)
CIRCLING	1240-½ 557 (600-½)	1240-2 557 (600-2)	1400-2½ 717 (800-2½)
MIKIE INT MINIMUMS			
S-LOC 25**	1020-½ 342 (400-½)	1020-¾	342 (400-¾)
CIRCLING	1180-½ 497 (500-½)	1240-2 557 (600-2)	1400-2½ 717 (800-2½)



TOLEDO, OHIO	41° 35'N-83° 48'W	TOLEDO EXPRESS (KTOL)
Amtd 5 13178		

HI-ILS or LOC RWY 25

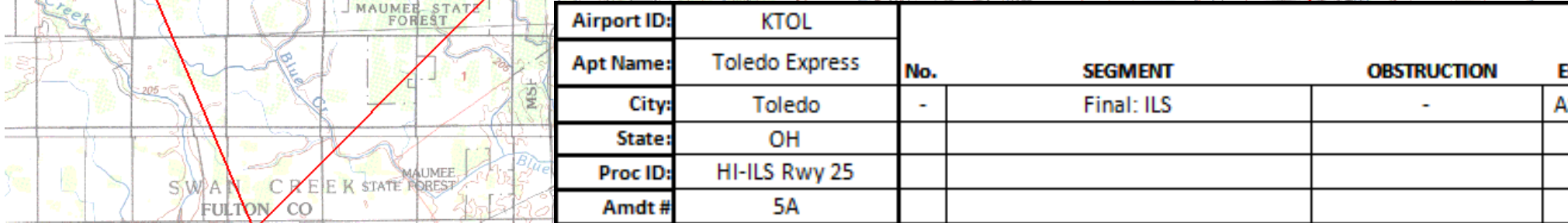
Genetic map of the NM/FT region on chromosome 1. The map shows a scale from 0 to 252,000 bp. Markers are indicated by vertical lines with labels above and below. Above the line: NM, 7, 14, 21, 28, 35, 4. Below the line: FT, 42000, 84000, 126000, 168000, 210000, 252000. A blue shaded region is located between approximately 168,000 and 210,000 bp.

State:	OH
Proc ID:	HI-ILS Rwy 25
Amdt #:	5A
Scale:	1:500,000

SEGMENT	OBSTRUCTION	ELEV
Initial: MYANN - POUDR	Windmill (39-004119)	1068
Missed Approach: level surface		
Arc Initial: POUDR - OTBUE	Tower (39-001418)	1848

Intermediate: OTBUE - HYMLI OM	Tower (39-002110)	1058
Final: Localizer HYMLI OM - MIKIE	Tower (39-000799)	939
Final Step-down: Localizer MIKIE - MAP	Tree	769
Missed Approach Holding	Tower (39-020159)	1234

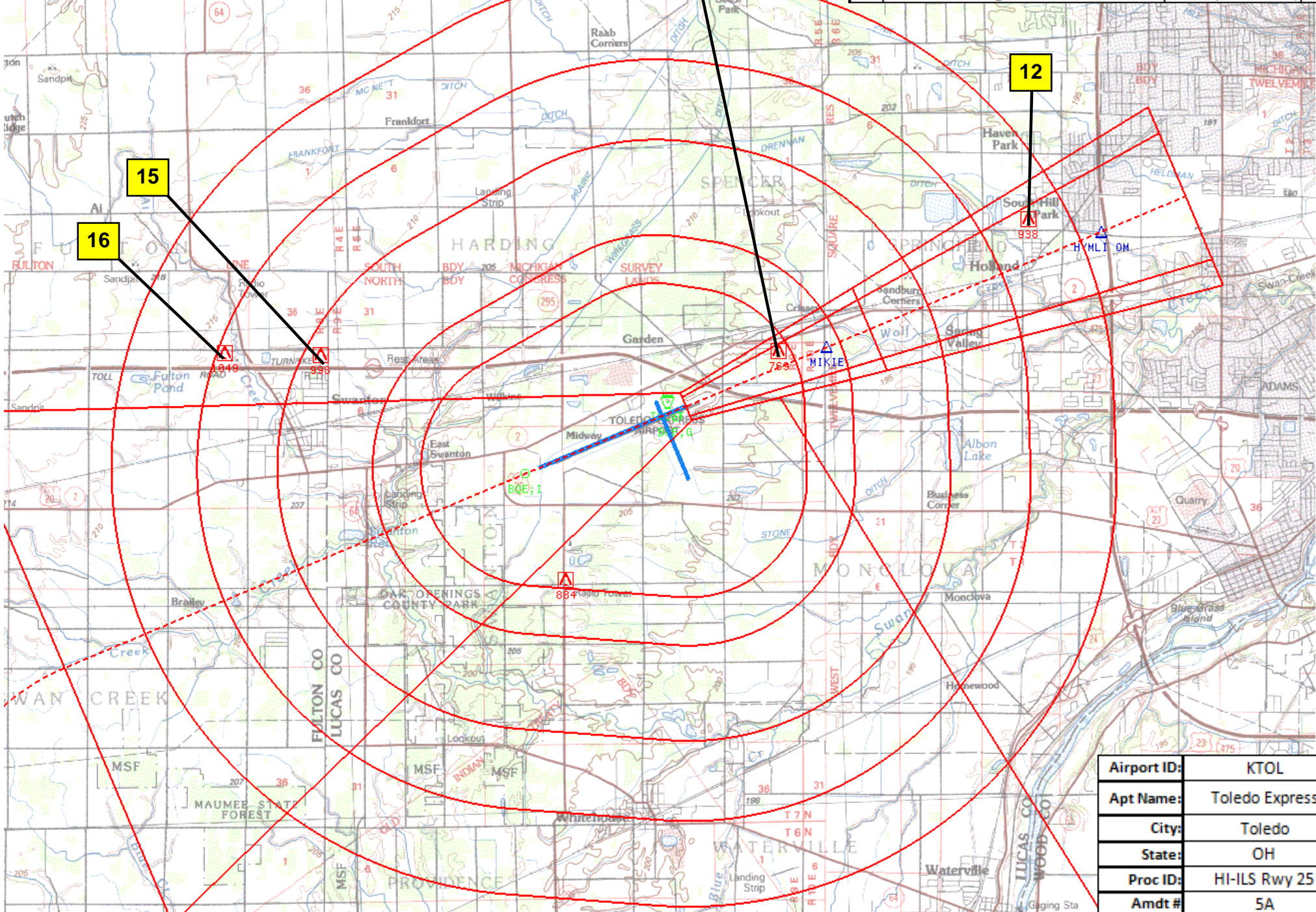
fposbb | tol_hil25 (PROD) | 20 Dec 2016 14:23:44 | 1" = 8333.3 feet (MAP)



Airport ID:	KTOL				
Apt Name:	Toledo Express				
City:	Toledo	No.	SEGMENT	OBSTRUCTION	ELEV
State:	OH	-	Final: ILS	-	ASC
Proc ID:	HI-ILS Rwy 25				
Amdt #	5A				
Scale:	1:100,000				

NM 1 2 3 4 5 6 7 8 9
FT 8000 16000 24000 32000 40000 48000
fposbb | tol_hii25 (PROD) | 20 Dec 2016 14:21:51 | 1" = 8333.3 feet (MAP)

No.	SEGMENT	OBSTRUCTION	ELEV
12	Final: Localizer HYMLI OM - MIKIE	Tower (39-000799)	769
13	Final Step-down: Localizer MIKIE - MAP	Tree	769
15	Circling: CAT C	Tower (39-000157)	998
16	Circling: CAT D and E	Tower (39-003822)	1049



Airport ID:	KTOL
Apt Name:	Toledo Express
City:	Toledo
State:	OH
Proc ID:	HI-ILS Rwy 25
Amdt #	5A
Scale:	1:100,000