

<b>Flight Procedure Tracking Form</b>		<b>Action:</b> FLIGHT CHECK	<b>Task Type:</b> IAP	<b>Date Open:</b> 03/28/2016	<b>Task #:</b> 2014071726505820001	<b>Request #:</b> 20140717265058
<b>Procedure:</b> RNAV (GPS) RWY 23 AMDT 1C			<b>Airport ID:</b> KOKK	<b>Airport:</b> KOKOMO MUNI		<b>Reimbursable #:</b> NO
<b>City:</b> KOKOMO	<b>ST:</b> IN	<b>GPS #:</b>	<b>Estimated Chart Date:</b> 04/27/2017		<b>FICO #:</b>	
<b>Fac ID:</b> N/A		<b>Fac. Type:</b>			<b>Specialist:</b> PABLO ORTIZ	
<b>Procedure Review</b>						
	<b>Rec'd</b>	<b>Rel'd</b>	<b>Full Name</b>	<b>Comments</b>		
<b>Lead:</b>	06/21/2016			QUALITY		
<b>QA:</b>				22 12.22.2016 BD		
<b>Liaison:</b>				CHECKED		
<b>Procedure Comments:</b>			<b>Remark Type:</b> INFORMATION			
ASSIGNED MAG/VAR FWA VORTAC: OLD 0E - NEW 6W OKK VORTAC: OLD 0E - NEW 5W  CONTACT: STEVEN VARGAS, AJV-5421 / DANIEL OLSON, AJV-5423 / JULIE MORGAN AJV-5422, 405.954.0695/3255/8568						

QUALITY  
15  
CHECKED

OLD

KOKOMO, INDIANA

AL-711 (FAA)

16203

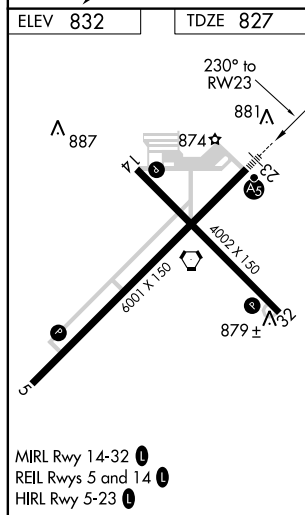
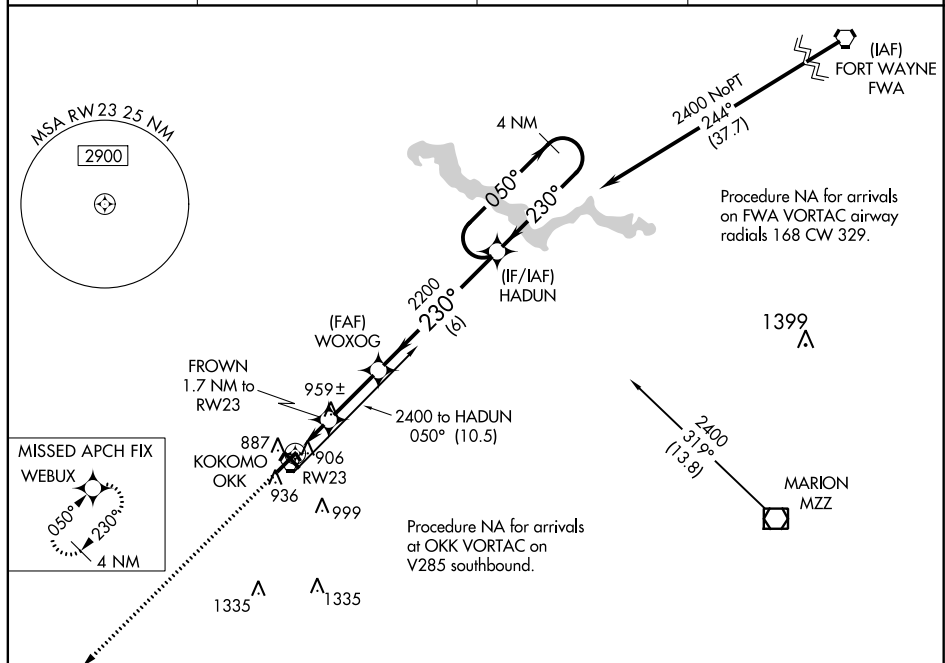
WAAS CH <b>40119</b> <b>W23A</b>	APP CRS <b>230°</b>	Rwy Idg TDZE Apt Elev	<b>6001</b> <b>827</b> <b>832</b>
--	------------------------	-----------------------------	---

# RNAV (GPS) RWY 23

KOKOMO MUNI (OKK)

<b>⚠</b> For uncompensated Baro-VNAV systems, LNAV/VNAV NA below -16°C (4°F) or above 54°C (130°F). DME/DME RNP-0.3 NA.	MALSR 	MISSED APPROACH: Climb to 3000 direct WEBUX and hold.
---	-----------	---

AWOS-3 <b>113.5</b>	GRISSEM APP CON★ <b>121.05 338.275</b>	CLNC DEL <b>120.0</b>	UNICOM <b>123.0</b> (CTAF) <b>0</b>
------------------------	---	--------------------------	--



	3000	WEBUX				4 NM Holding Pattern
	*LNAV only	FROWN 1.7 NM to RW23	WOXOG 2200	HADUN	2400	GP 3.00° TCH 44
	*1.1 NM to RW23	*1.400	2200	230°	050°	
	1.1	0.6	2.5 NM	6 NM		
CATEGORY	A	B	C	D		
LPV DA	1027-1/2	200 (200-1/2)				
LNAV/VNAV DA	1224-7/8	397 (400-7/8)				
LNAV MDA	1220-1/2	393 (400-1/2)	1220-3/4	393 (400-3/4)		
CIRCLING	1260-1 428 (500-1)	1300-1 468 (500-1)	1400-1 1/2 568 (600-1 1/2)	1640-2 1/2 808 (900-2 1/2)		

KOKOMO, INDIANA  
Amdt 1B 23JUN16

40°32'N - 86°04'W

# RNAV (GPS) RWY 23

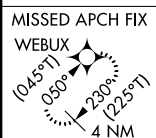
EC-2, 13 OCT 2016 to 10 NOV 2016

FIG

RNAV (GPS) RWY 23  
KOKOMO MUNI (OKK)

**MISSED APPROACH:** Climb to 3000 direct WEBUX and hold.

PROTOTYPE-NOT FOR NAVIGATION



<div style="display: flex; justify-content: space-around; align-items: center;"> <div style="text-align: center;">             3000  </div> <div style="text-align: center;">             WEBUG  </div> </div>		<div style="display: flex; justify-content: space-between; align-items: center;"> <div>             *LNAV only              FROWN              1.7 NM to              RW23           </div> <div>             WOXOG              2200           </div> <div>             HADUN              4 NM              Holding Pattern           </div> </div>			
<div style="display: flex; justify-content: space-around; align-items: center;"> <div>             *1.1 NM to              RW23  </div> <div>             *1400  </div> <div>             (045°T)              050° →              ← 230°              (225°T)              GP 3.00°              TCH 44           </div> </div>		<div style="display: flex; justify-content: space-around; align-items: center;"> <div>             2200              (225°T)              230°           </div> <div>             2400              (225°T)           </div> </div>			
<div style="display: flex; justify-content: space-around; align-items: center;"> <div>1.1</div> <div>0.6</div> <div>2.5 NM</div> <div>6 NM</div> </div>					
CATEGORY	A		B	C	D
LPV DA	1027-½ 200 (200-½)				
LNAV/ VNAV DA	1224-⅞ 397 (400-⅞)				
LNAV MDA	1220-½ 393 (400-½)			1220-¾ 393 (400-¾)	
CIRCLING	1260-1 428 (500-1)	1300-1 468 (500-1)	1400-1½ 568 (600-1½)	1640-2½ 808 (900-2½)	

KOKOMO MUNI (OKK)  
RNAV (GPS) RWY 23