

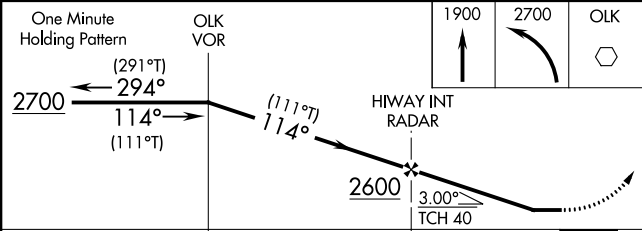
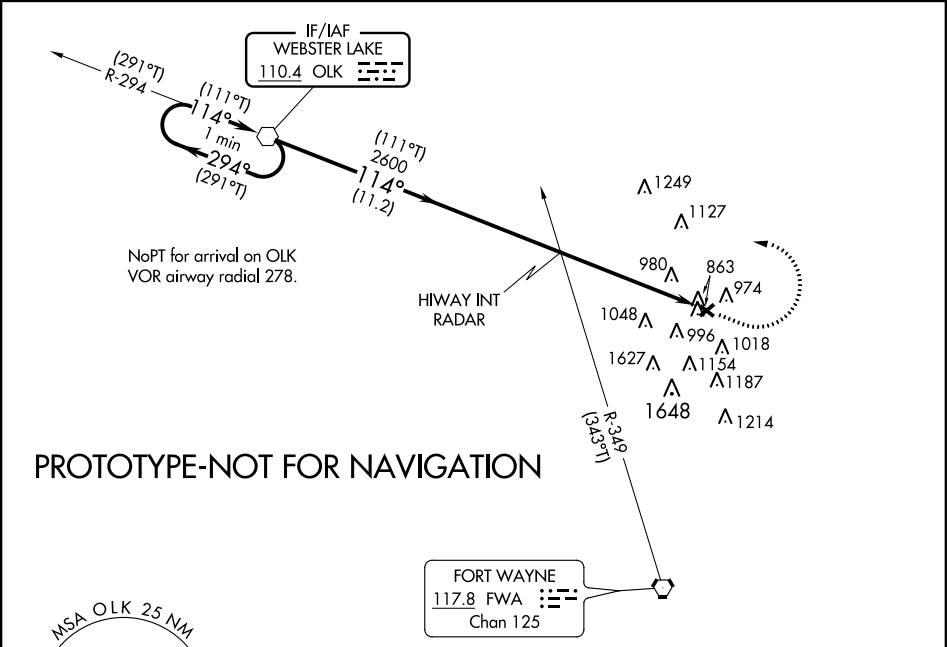
<b>Flight Procedure Tracking Form</b>		<b>Action:</b> FLIGHT CHECK	<b>Task Type:</b> IAP	<b>Date Open:</b> 03/28/2016	<b>Task #:</b> 2014071726505819001	<b>Request #:</b> 20140717265058
<b>Procedure:</b> VOR RWY 13 AMDT 11			<b>Airport ID:</b> KSMD	<b>Airport:</b> SMITH FIELD		<b>Reimbursable #:</b> NO
<b>City:</b> FORT WAYNE	<b>ST:</b> IN	<b>GPS #:</b>	<b>Estimated Chart Date:</b> 04/27/2017		<b>FICO #:</b>	
<b>Fac ID:</b> OLK		<b>Fac. Type:</b> VOR			<b>Specialist:</b> PABLO ORTIZ	
<b>Procedure Review</b>						
	<b>Rec'd</b>	<b>Rel'd</b>	<b>Full Name</b>	<b>Comments</b>		
<b>Lead:</b>	06/27/2016	11/02/2016	STEVEN VARGAS	<div>QUALITY</div> <div>10</div> <div>CHECKED</div>		
<b>QA:</b>	11/02/2016					
<b>Liaison:</b>						
<b>Procedure Comments:</b> ENROUTE-NON <b>Remark Type:</b> INFORMATION  ASSIGNED MAG/VAR FWA VORTAC: OLD 0E - NEW 6W  UPDATE FDC 6/1573 ON CHART DATE  CONTACT: STEVEN VARGAS, AJV-5421 / DANIEL OLSON, AJV-5423 / JULIE MORGAN AJV-5422, 405.954.0695/3255/8568						

VOR OLK	APP CRS	Rwy Idg	2623
110.4	114°	TDZE	836
		Apt Elev	836

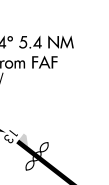
VOR RWY 13  
SMITH FIELD (SMD)

<p>⚠ NA</p> <p>❄ -22°C/-8°F</p>	<p>Rwy 13 helicopter visibility reduction below 1 SM NA. Procedure NA at night.</p> <p>When local altimeter setting not received, use Fort Wayne Intl altimeter setting and increase all MDA 40 feet and S-13 Cat C visibility 1/8 SM.</p>	<p>MISSED APPROACH: Climb to 1900 then climbing left turn to 2700 direct OLK VOR and hold.</p>
---------------------------------	--	--

AWOS-3 124.55	FORT WAYNE APP CON 127.2 284.6	UNICOM 122.8 (CTAF) 0
------------------	-----------------------------------	--------------------------



CATEGORY	A	B	C	D
S-13	1360-1 524 (600-1)		1360-1½ 524 (600-1½)	NA
CIRCLING	1400-1 564 (600-1)		1940-3 1104 (1200-3)	NA

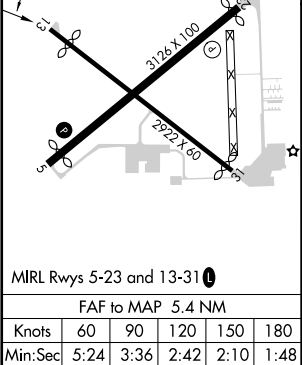
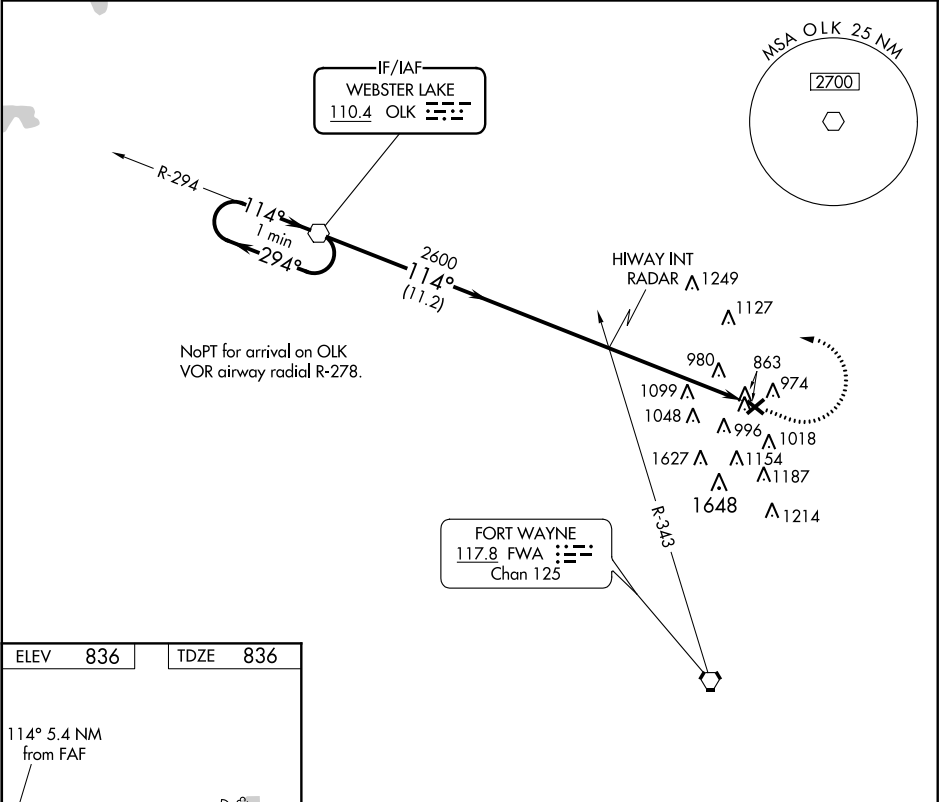
ELEV	836	TDZE	836		
 <p>114° 5.4 NM from FAF</p> <p>3126 X 100</p> <p>2822 X 60</p> <p>MIRL Rwy 5-23 and 13-31 0</p>					
FAF to MAP 5.4 NM					
Knots	60	90	120	150	180
Min:Sec	5:24	3:36	2:42	2:10	1:48

VOR OLK <b>110.4</b>	APP CRS <b>114°</b>	Rwy Idg TDZE Apt Elev	<b>2623</b> <b>836</b> <b>836</b>
-------------------------	------------------------	-----------------------------	---

VOR RWY 13  
SMITH FIELD (SMD)

NA -22°C/-8°F	Visibility reduction by helicopters NA. When local altimeter setting not received, use Fort Wayne Intl altimeter setting and increase all MDA 40 feet and Circling Cat C visibility ¼ mile.	MISSED APPROACH: Climb to 1900 then climbing left turn to 2700 direct OLK VOR and hold.
------------------	---	---

AWOS-3 <b>124.55</b>	FORT WAYNE APP CON <b>127.2 284.6</b>	UNICOM <b>122.8 (CTAF) 0</b>
-------------------------	--	---------------------------------



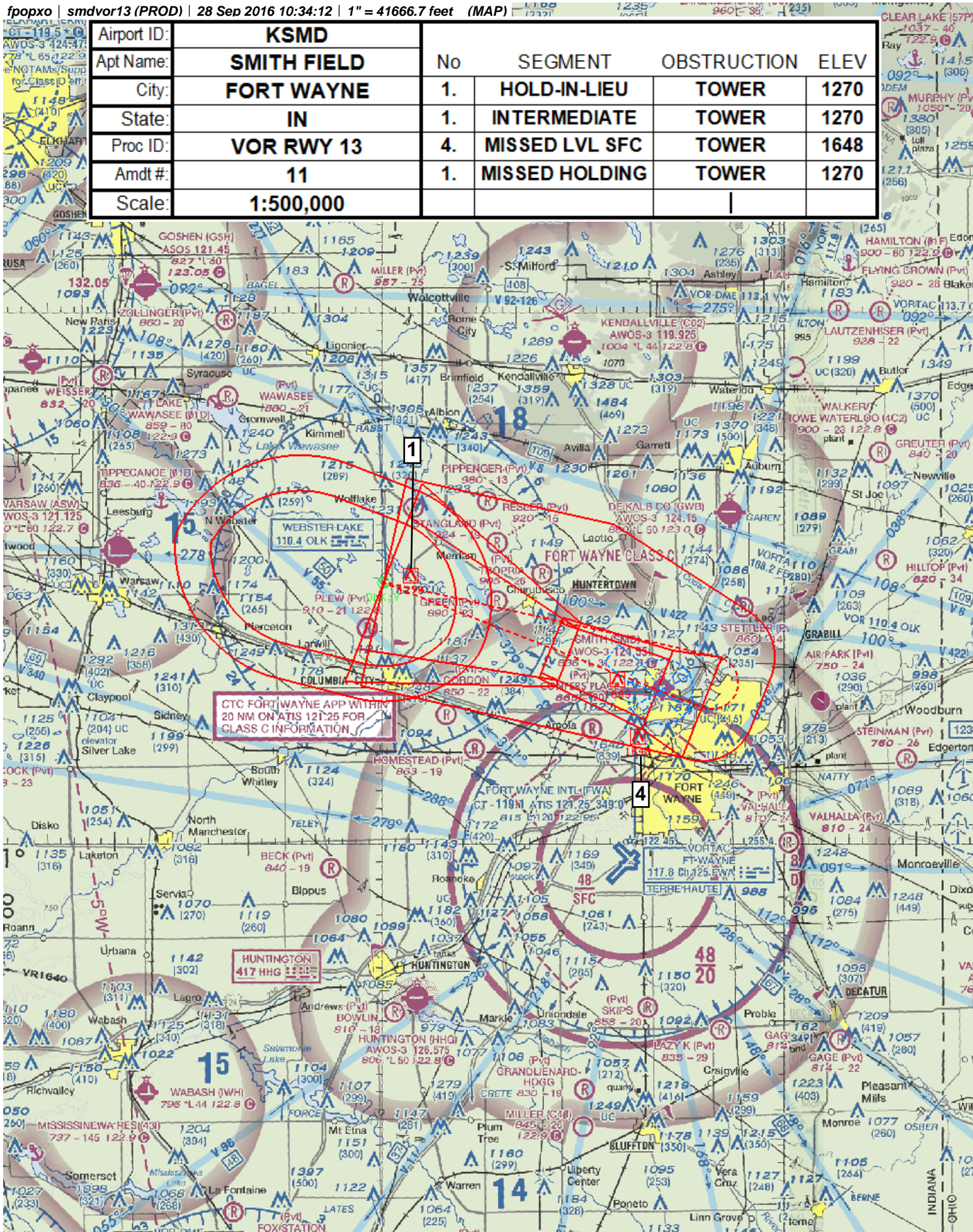
One Minute Holding Pattern			OLK VOR	1900	2700	OLK
2700 ← 294° 114° →			114°	HIWAY INT RADAR	2600	
			11.2 NM	3.00° TCH 40	5.4 NM	
CATEGORY	A	B	C	D		
S-13	1360-1	524 (600-1)	1360-1½ 524 (600-1½)	NA		
CIRCLING	1400-1	564 (600-1)	1400-1½ 564 (600-1½)	NA		



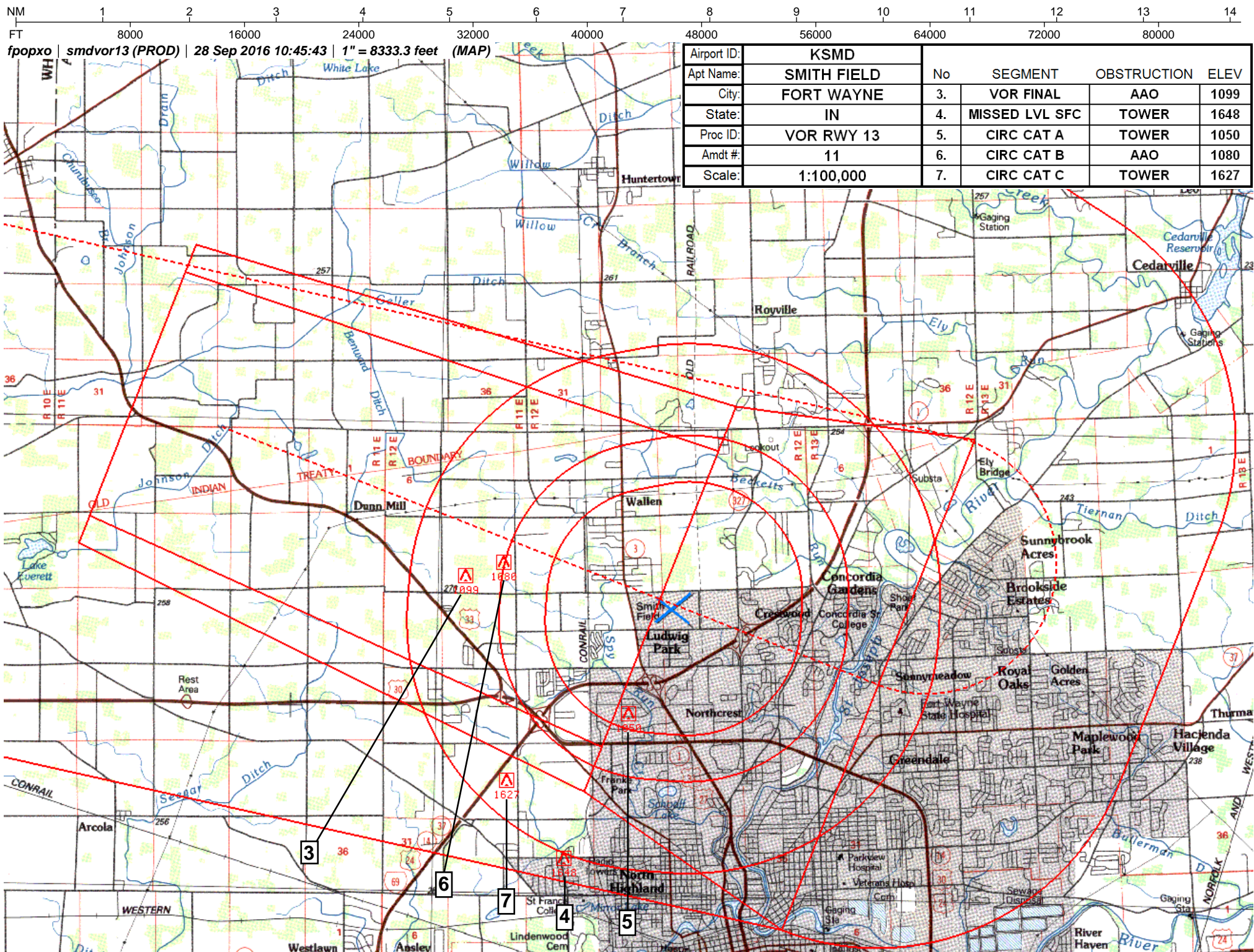
NM 7 14 21 28 35 42 49  
FT 42000 84000 126000 168000 210000 252000 294000

fpopxo | smdvor13 (PROD) | 28 Sep 2016 10:34:12 | 1" = 41666.7 feet (MAP)

Airport ID:	KSMD			
Apt Name:	SMITH FIELD			
City:	FORT WAYNE			
State:	IN			
Proc ID:	VOR RWY 13			
Amdt #:	11			
Scale:	1:500,000			
No	SEGMENT	OBSTRUCTION	ELEV	
1.	HOLD-IN-LIEU	TOWER	1270	
1.	INTERMEDIATE	TOWER	1270	
4.	MISSED LVL SFC	TOWER	1648	
1.	MISSED HOLDING	TOWER	1270	







# TERMINAL AIRSPACE DATA REQUIREMENTS

CITY: FORT WAYNE

STATE: IN

AIRPORT NAME: SMITH FIELD

ID: KSMD

PROCEDURE: VOR RWY 13

AMDT: 11

DOCKET # : NOT REQUIRED

(96-AXX-X/Required/Not Required)

ALL DIST TO 1/100 NM; ELEV TO NEAREST FT; COORD TO 1/100 SEC; DEG TO 1/100 DG.

1. Distance from THLD to 1000' point 3.04  
(Enter THLD, FAF, ARP, FACILITY, as appropriate)
2. Width of FINAL segment at 1000' point 3.36  
(Enter appropriate segment , final, intermediate, etc.)
3. True Course of FINAL segment containing 1000' point 111.44
4. High terrain in FINAL segment containing 1000' point 899
5. Distance from FAF to 1500' point 10.80  
(If 1500' point in PT maneuvering area or holding pattern note in remarks)
6. Width of INTERMEDIATE segment at 1500' point 7.92
7. True Course of INTERMEDIATE segment containing 1500' point 111.44
8. High terrain in INTERMEDIATE segment containing 1500' point 1011
9. Threshold Coordinates (if straight-in) ... \*410842.31N / 0850922.17W
10. ARP coordinates ..... 410836.10N / 0850910.00W
11. Runway end and distance furthest from ARP.....RWY 23  
(Click to Select) Distance .27 NM
12. FAF Coordinates ..... 411042.15N / 0851602.00W  
(Click to Select)

REMARKS: Approach/Drawing attached. \*DISPLACED THLD.