

Flight Procedure Tracking Form		Action: FLIGHT CHECK	Task Type: IAP	Date Open: 03/28/2016	Task #: 2014071726505818001	Request #: 20140717265058
Procedure: NDB RWY 9 AMDT 2			Airport ID: KHHG	Airport: HUNTINGTON MUNI		Reimbursable #: NO
City: HUNTINGTON	ST: IN	GPS #:	Estimated Chart Date: 04/27/2017		FICO #:	
Fac ID: HHG		Fac. Type: NDB			Specialist: HEIDI SNIDER	
Procedure Review						
	Rec'd	Rel'd	Full Name	Comments		
Lead:	06/21/2016	12/16/2016	DAVID DANNER	QUALITY Digitally signed by		
QA:	12/16/2016			24 DAVID W SAUER		
Liaison:				CHECKED Jan 10, 2017		
Procedure Comments: ENROUTE Remark Type: INFORMATION						
<p>ACTIVE DATA USED FOR KHHG AIRPORT AND HHG NDB. PENDING DATA USED FOR FWA VORTAC.</p> <p>ASSIGNED MAGVAR: KHHG 3W/1990 HHG NDB 3W/1990 FWA VORTAC 0E/1965 TO 6W/2020</p> <p>CONTACT: STEVE VARGAS 405.954.0695 / DANIEL OLSON 405.954.3255, AJV-5420 LEADS</p>						

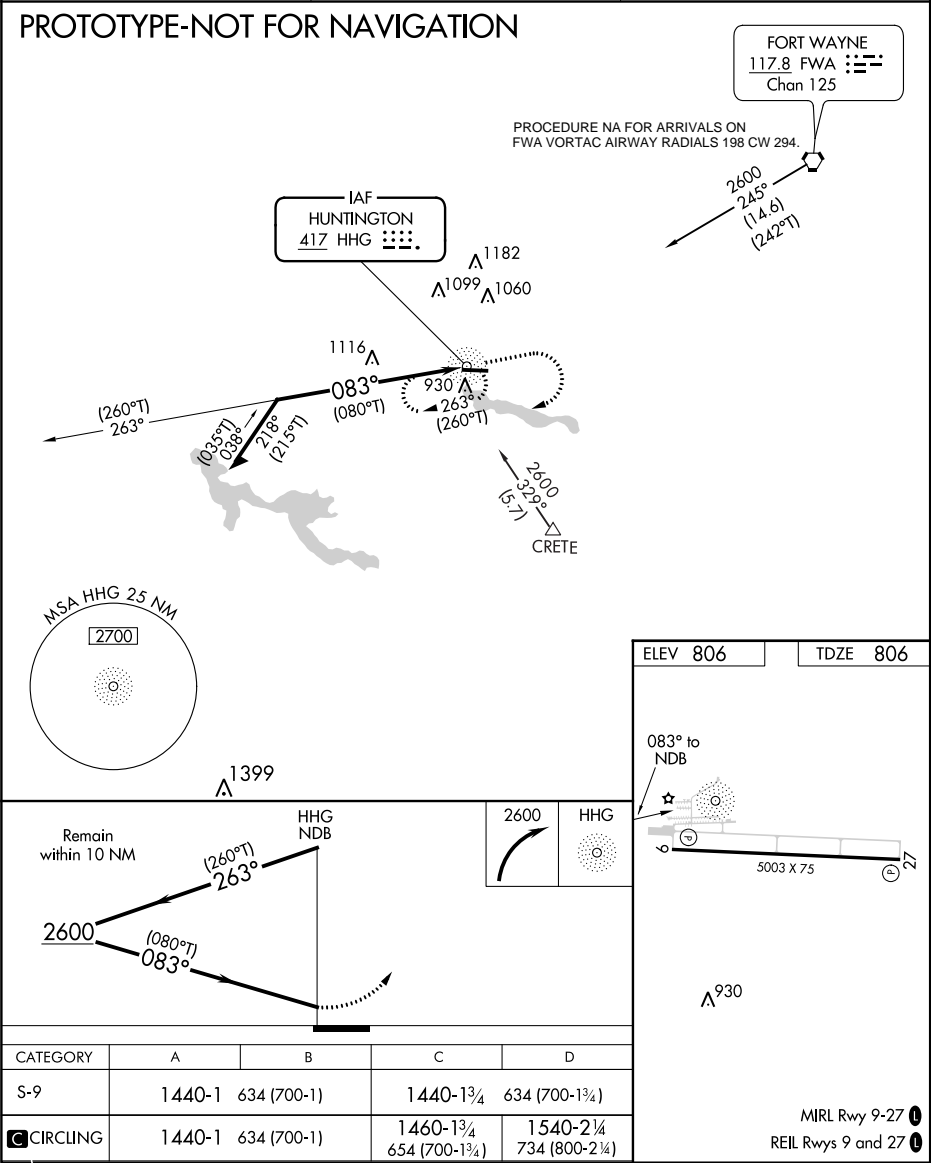


NDB	HHG	APP CRS	Rwy Idg	5003
417	083°	TDZE	806	
		Apt Elev	806	

NDB RWY 9
HUNTINGTON MUNI (HHG)

<div><div></div><div></div></div> <div>Rwy 9 helicopter visibility reduction below ¾ SM NA. Circling Rwy 27 NA at night.</div>	MISSED APPROACH: Climbing right turn to 2600 in HHG NDB holding pattern.
--	---

AWOS-3PT 126.575	FORT WAYNE APP CON 127.2 284.6	UNICOM 122.8 (CTAF) 0
---------------------	-----------------------------------	--------------------------



HUNTINGTON, IN
NDB RWY 9, AMDT 2

1) FEEDER: TOWER (18-001172) 1182 MSL

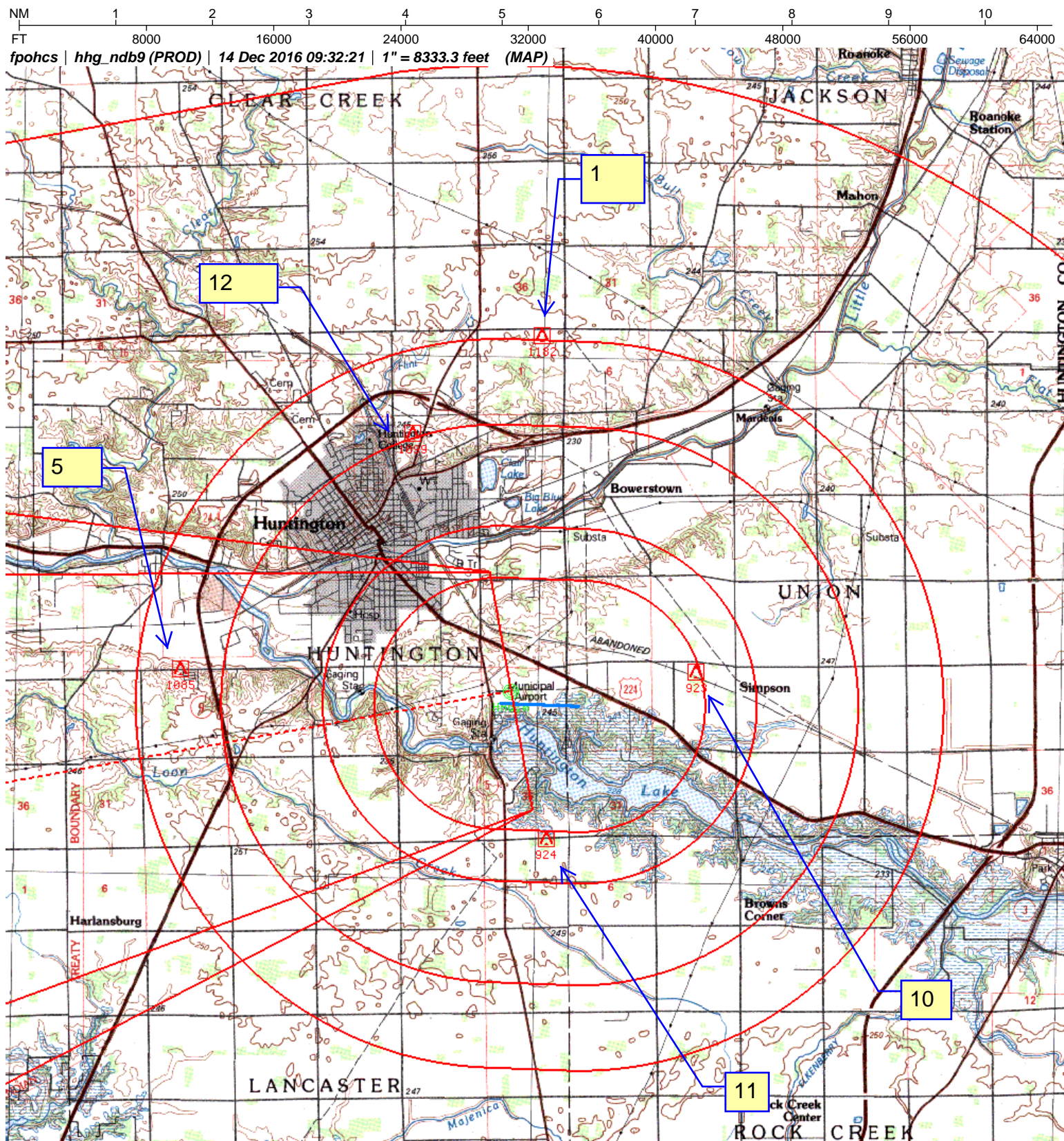
3) FEEDER: TOWER (18-002440) 1108 MSL

5) FINAL PT: TOWER (18-001644) 1085 MSL

6) PROCEDURE TURN: TOWER (18-001460)

1204 MSL

8) MISSED CIH: TOWER (18000775) 1279 MSL



HUNTINGTON MUNI (KHHG)

HUNTINGTON, IN

NDB RWY 9, AMDT 2

1:100,000

5) FINAL: TOWER (18-001644) 1085 MSL

10) CIRCLING CAT A: TREE (KHHGT0164) 923 MSL

11) CIRCLING CAT B: TREE (KHHGT0182) 924 MSL

12) CIRCLING CAT C: TOWER (18-001270) 1099 MSL

1) CIRCLING CAT D: TOWER (18-001172) 1182 MSL

8) MISSED CIH: TOWER (18000775) 1279 MSL

TERMINAL AIRSPACE DATA REQUIREMENTS

CITY: **HUNTINGTON**

STATE: **IN**

AIRPORT NAME: **HUNTINGTON MUNI**

ID: **KHHG**

PROCEDURE: **NDB RWY 9**

AMDT: **2**

DOCKET#: **NOT REQUIRED**

(96-AXX-X/Required/Not Required)

ALL DIST TO 1/100 NM; ELEV TO NEAREST FT; COORD TO 1/100 SEC; DEG TO 1/100 DG.

- | | | | |
|---|---------------------------------|--------------------------------|---------------|
| 1. Distance from | <u>FACILITY</u> | to 1000' point | <u>7.00</u> |
| <small>(Enter THLD, FAF, ARP, FACILITY, as appropriate)</small> | | | |
| 2. Width of | <u>FINAL</u> | segment at 1000' point | <u>4.95</u> |
| <small>(Enter appropriate segment, final, intermediate, etc.)</small> | | | |
| 3. True Course of | <u>FINAL</u> | segment containing 1000' point | <u>079.81</u> |
| 4. High Terrain in | <u>FINAL</u> | segment containing 1000' point | <u>839</u> |
| 5. Distance from | <u>FACILITY</u> | to 1500' point | <u>7.00</u> |
| <small>(If 1500' point in PT maneuvering area or holding pattern note in remarks)</small> | | | |
| 6. Width of | <u>FINAL</u> | segment at 1500' point | <u>4.95</u> |
| 7. True Course of | <u>FINAL</u> | segment containing 1500' point | <u>079.81</u> |
| 8. High Terrain in | <u>FINAL</u> | segment containing 1500' point | <u>839</u> |
| 9. Threshold Coordinates (if straight-in) ... | <u>405111.46N / 0852757.96W</u> | | |
| 10. ARP Coordinates | <u>405110.50N / 0852725.40W</u> | | |
| 11. Runway Approach End and distance furthest from ARP | RWY | <u>9</u> | |
| | Distance | <u>0.41</u> | NM |
| 12. FAF Coordinates | <u>NA / NA</u> | | |

REMARKS: Approach/Drawing attached.

OLD

HUNTINGTON, INDIANA

AL-5767 (FAA)

NDB HHG	APP CRS	Rwy Idg	5003
417	082°	TDZE	804
		Apt Elev	806

NDB RWY 9
HUNTINGTON MUNI (HHG)

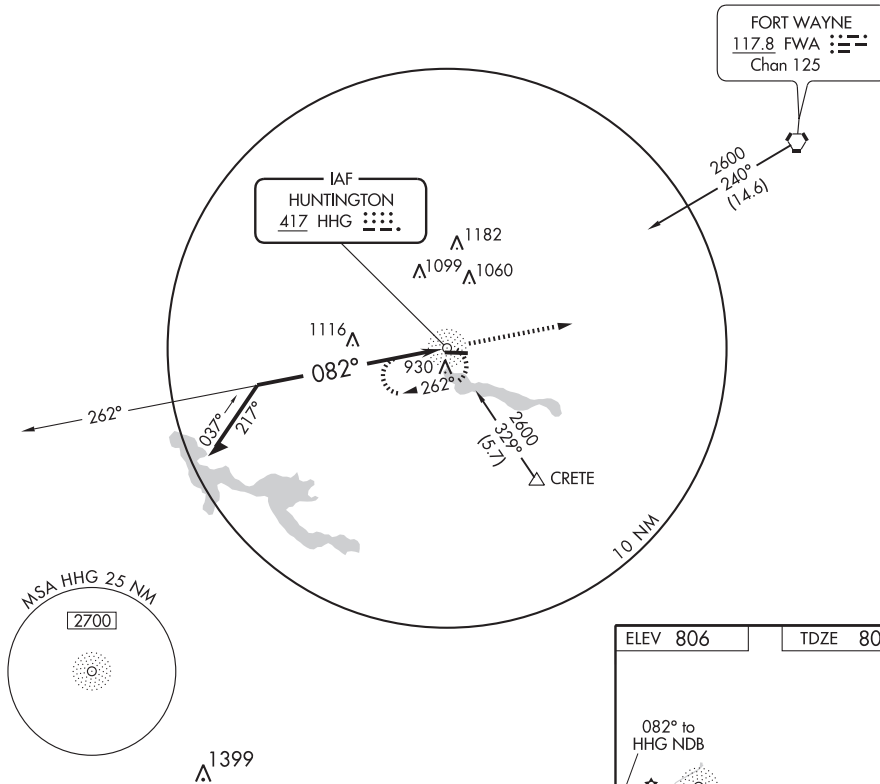
Use Fort Wayne altimeter setting.

MISSED APPROACH: Climb to 2600
in HHG NDB holding pattern.

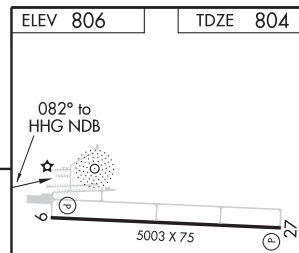
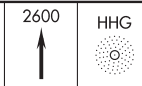
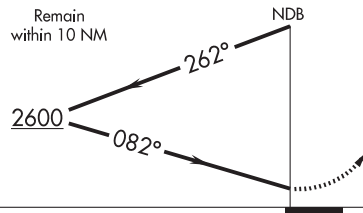
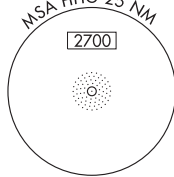
FORT WAYNE APP CON
127.2 284.6

UNICOM
122.8 (CTAF) 0

EC-2, 20 OCT 2011 to 17 NOV 2011



EC-2, 20 OCT 2011 to 17 NOV 2011



CATEGORY	A	B	C	D
S-9	1500-1 696 (700-1)		1500-2 696 (700-2)	1500-2 1/4 696 (700-2 1/4)
CIRCLING	1500-1 694 (700-1)		1500-2 694 (700-2)	1500-2 1/4 694 (700-2 1/4)

930

MIRL Rwy 9-27 0
REIL Rwy 9 and 27 0

HUNTINGTON, INDIANA
Amdt 1 11125

40°51'N-85°27'W

HUNTINGTON MUNI (HHG)
NDB RWY 9