

<b>Flight Procedure Tracking Form</b>		<b>Action:</b> FLIGHT CHECK	<b>Task Type:</b> IAP	<b>Date Open:</b> 03/28/2016	<b>Task #:</b> 2014071726505817002	<b>Request #:</b> 20140717265058
<b>Procedure:</b> RNAV (GPS) RWY 9 AMDT 0E			<b>Airport ID:</b> KGWB	<b>Airport:</b> DE KALB COUNTY		<b>Reimbursable #:</b> NO
<b>City:</b> AUBURN	<b>ST:</b> IN	<b>GPS #:</b>	<b>Estimated Chart Date:</b> 04/27/2017		<b>FICO #:</b>	
<b>Fac ID:</b> N/A		<b>Fac. Type:</b>			<b>Specialist:</b> JAMES ROGERS	
<b>Procedure Review</b>						
	<b>Rec'd</b>	<b>Rel'd</b>	<b>Full Name</b>	<b>Comments</b>		
<b>Lead:</b>	06/21/2016			<div>QUALITY</div> <div>10</div> <div>CHECKED</div>		
<b>QA:</b>						
<b>Liaison:</b>						
<b>Procedure Comments:</b>			ENROUTE	<b>Remark Type:</b> INFORMATION		
<p>ACTIVE DATA USED FOR KGWB AIRPORT. ACTIVE DATA USED FOR THE RUNWAY.</p> <p>ASSIGNED MAGVAR: KGWB 5W. ASSIGNED MAGVAR: FWA VORTAC: OLD 0E - NEW 6W.</p> <p>CONTACT: STEVE VARGAS 405.954.0695 / JULIE MORGAN 405.954.8568.</p>						

WAAS CH <b>40201</b> <b>W09A</b>	APP CRS <b>094°</b>	Rwy Idg TDZE <b>880</b> Apt Elev <b>880</b>
--	------------------------	---

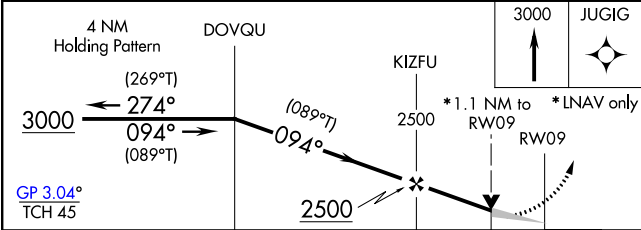
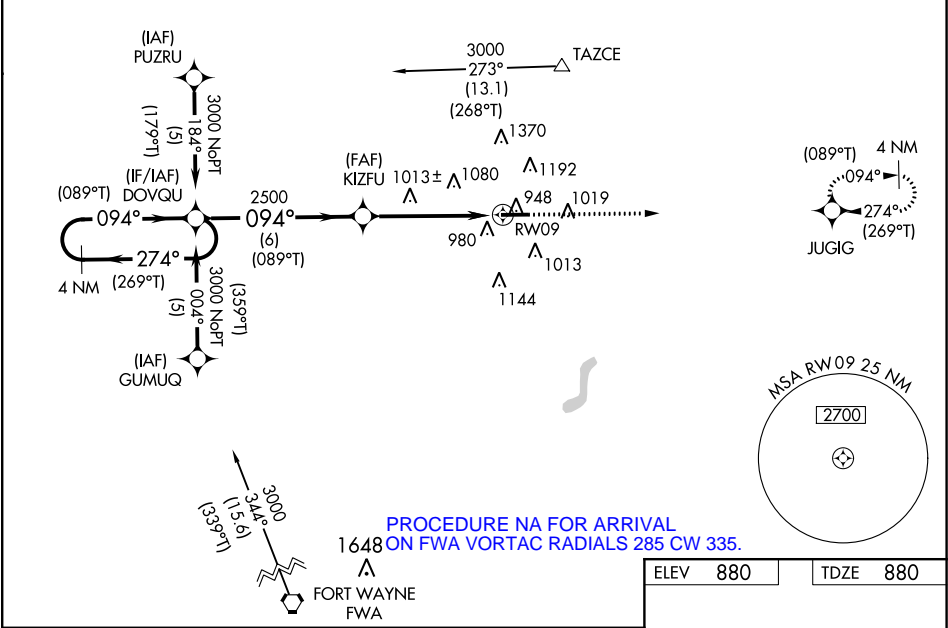
RNAV (GPS) RWY 9

DE KALB COUNTY (GWB)

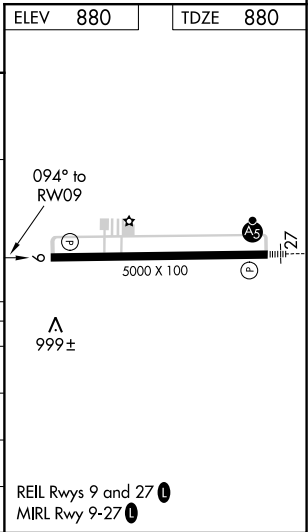
<div><div>▼</div><div>▲</div></div> <div>DME/DME RNP-0.3 NA. For uncompensated Baro-VNAV systems, LNAV/VNAV below -16°C (4°F) or above 54°C (130°F).</div>	MISSED APPROACH: Climb to 3000 direct JUGIG and hold.
--	--

AWOS-3 <b>124.15</b>	FORT WAYNE APP CON <b>127.2 284.6</b>	CLNC DEL <b>126.6</b>	UNICOM <b>123.0 (CTAF) 0</b>
-------------------------	--	--------------------------	---------------------------------

PROTOTYPE-NOT FOR NAVIGATION



CATEGORY	A	B	C	D
LPV DA	1182-1		302 (400-1)	
LNAV/VNAV DA	1237-1¼		357 (400-1¼)	
LNAV MDA	1280-1	400 (400-1)	1280-1⅝ 400 (400-1⅝)	1280-1¼ 400 (400-1¼)
CIRCLING	1320-1 440 (500-1)	1560-1 680 (700-1)	1720-2½ 840 (900-2½)	1720-2¾ 840 (900-2¾)



OLD

AUBURN, INDIANA

AL-5266 (FAA)

16231

WAAS CH <b>40201</b> <b>W09A</b>	APP CRS <b>094°</b>	Rwy Idg TDZE <b>880</b> Apt Elev <b>880</b>
--	------------------------	---

# RNAV (GPS) RWY 9

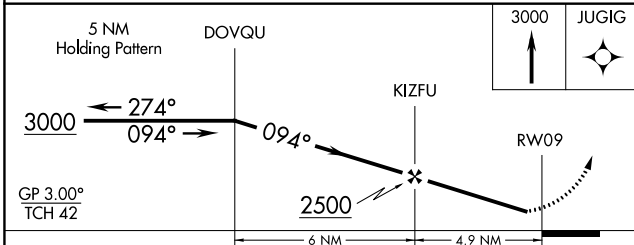
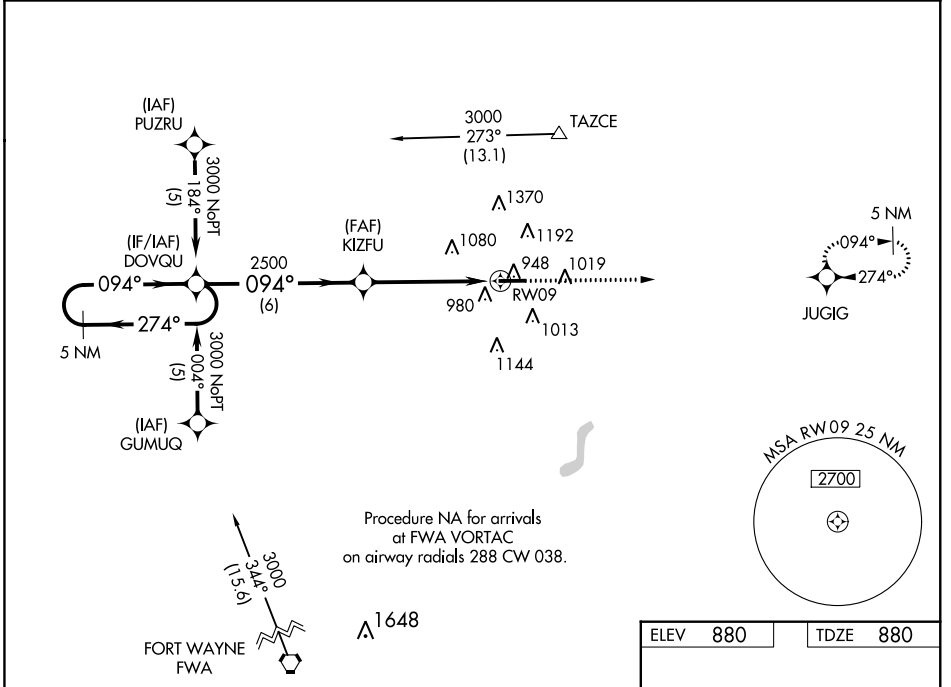
DE KALB COUNTY (GWB)

**▼** When local altimeter setting not received, use Fort Wayne Intl altimeter setting and increase LPV DA to 1239 feet; LNAV/VNAV DA to 1294 feet; and increase all MDA 60 feet; increase LPV and LNAV/VNAV all Cats visibility ¼ mile; and increase LNAV Cats C/D and Circling Cats C and D visibility ¼ mile. Baro-VNAV NA when using Fort Wayne Intl altimeter setting. For uncompensated Baro-VNAV systems, LNAV/VNAV NA below -1.6°C (4°F) or above 47°C (116°F). Helicopter visibility reduction below 1 SM NA. DME/DME RNP-0.3 NA.

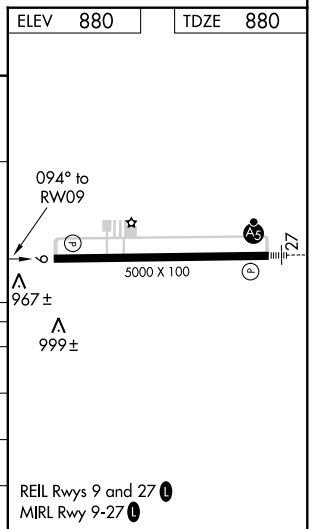
**▲ NA**

**MISSED APPROACH:**  
Climb to 3000 direct JUGIG and hold.

AWOS-3 <b>124.15</b>	FORT WAYNE APP CON <b>127.2 284.6</b>	CLNC DEL <b>126.6</b>	UNICOM <b>123.0 (CTAF) 0</b>
-------------------------	--	--------------------------	---------------------------------



CATEGORY	A	B	C	D
LPV DA	1182-1	302 (400-1)		
LNAV/VNAV DA	1237-1¼	357 (400-1¼)		
LNAV MDA	1280-1 400 (400-1)	1280-1½ 400 (400-1½)	1280-1¼ 400 (400-1¼)	
CIRCLING	1320-1 440 (500-1)	1560-1 680 (700-1)	1720-2½ 840 (900-2½)	1720-2¾ 840 (900-2¾)



AUBURN, INDIANA  
Orig-D 18AUG16

41°18'N-85°04'W

# RNAV (GPS) RWY 9

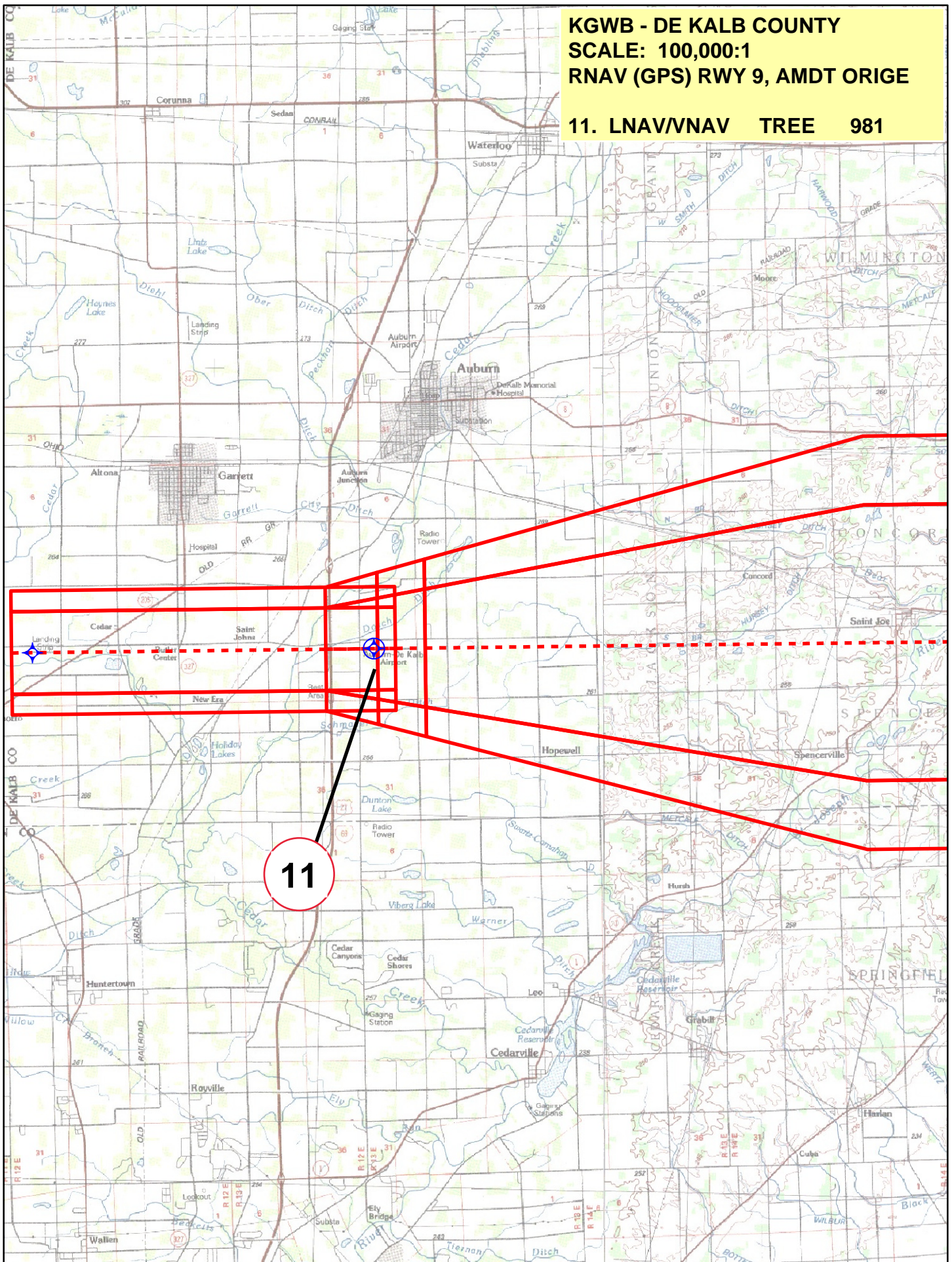
EC-2, 18 AUG 2016 to 15 SEP 2016

EC-2, 18 AUG 2016 to 15 SEP 2016



**KGWB - DE KALB COUNTY**  
**SCALE: 100,000:1**  
**RNAV (GPS) RWY 9, AMDT ORIGE**

**11. LNAV/VNAV TREE 981**





## RNAV (GPS) RWY 9, AMDT ORIGE

12.	LNAV FINAL	T-L TWR	1013
17.	CAT A	T-L TWR	1003
18.	CAT B	TOWER	1192
19.	CAT C/D	TOWER	1370

