

Flight Procedure Tracking Form		Action: FLIGHT CHECK	Task Type: IAP	Date Open: 03/23/2016	Task #: 2014071726505803003	Request #: 20140717265058
Procedure: LOC BC RWY 14 AMDT 15C			Airport ID: KFWA	Airport: FORT WAYNE INTL		Reimbursable #: NO
City: FORT WAYNE	ST: IN	GPS #:	Estimated Chart Date: 04/27/2017		FICO #: 1172571	
Fac ID: N/A		Fac. Type:		Specialist: PABLO ORTIZ		
Procedure Review						
	Rec'd	Rel'd	Full Name	Comments		
Lead:	04/25/2016	08/24/2016	JACOB POWERS	QUALITY		
QA:	08/24/2016	08/24/2016	JACOB POWERS	10		
Liaison:	08/24/2016	08/24/2016	MARY MCDONALD	CHECKED		
Procedure Comments:			ENROUTE-NON			
			Remark Type: INFORMATION			
ASSIGNED MAG/VAR FWA ILS : OLD 3W - NEW 6W HVD ILS: OLD 5W - NEW 6W FWA ASR: OLD 3W - NEW 6W KFWA: OLD 3W - NEW 6W FWA VORTAC: OLD 0E - NEW 6W PENDING DATA USED FOR KFWA AIRPORT AND RUNWAYS PENDING DATA USED FOR FWA ILS, HVD ILS, FWA ASR CONTACT: STEVEN VARGAS, AJV-5421 / PETER GETZ, AJV-5423 / JULIE MORGAN AJV-5422, 405.954.0695/4919/8568 01/04/17: THIS IS AN UPDATED COPY OF THE FORM DEVELOPED ON 06/06/16. 1. ADDED FWA VORTAC: OLD 0E - NEW 6W. 2. UPDATED TERMINAL ROUTE FWA VORATC TO WZARD COURSE FROM 315.77 TO 321.77. 3. UPDATED TERMINAL ROUTE OYIDU TO ZOGOR FROM FWA LR-308 TO FWA LR-314. 4. UPDATED ADDITIONAL FLIGHT DATA FROM CHART FWA R-279 AT OYIDU TO CHART FWA R-285 AT OYIDU. 5. ADDED CHART PLANVIEW NOTE PROCEDURE NA FOR ARRIVAL ON FWA VORTAC AIRWAY RADIALS 285 CW 335.						

QUALITY

10

CHECKED

QUALITY

28

CHECKED

LOC/DME I-FWA 109.9 Chan 36	APP CRS 141°	Rwy Idg TDZE Apt Elev 8001 802 815
---	------------------------	--

LOC BC RWY 14

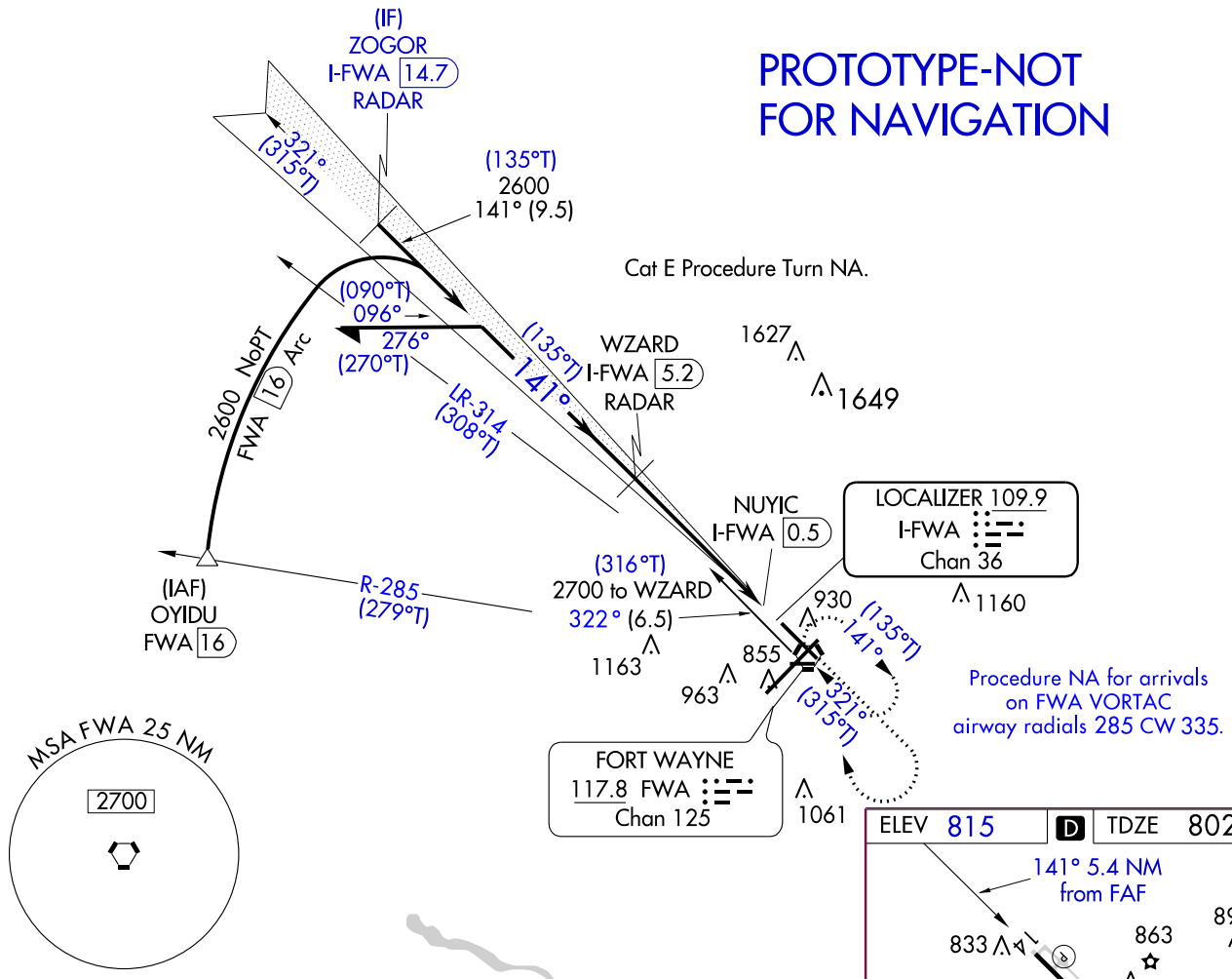
FORT WAYNE INTL (FWA)

<div><div><div><div></div><div></div></div><div><div></div><div></div></div></div><div>ASR</div></div> <div>DME or RADAR required.</div>	<div>MISSED APPROACH: Climb to 4000 on I-FWA southeast course then right turn direct FWA VORTAC and hold.</div>			
<div>ATIS</div> <div>121.25 349.0</div>	<div>FORT WAYNE APP CON</div> <div>127.2 284.6</div>	<div>FORT WAYNE TOWER</div> <div>119.1 272.725</div>	<div>GND CON</div> <div>121.9 348.6</div>	<div>CLNC DEL</div> <div>124.75</div>

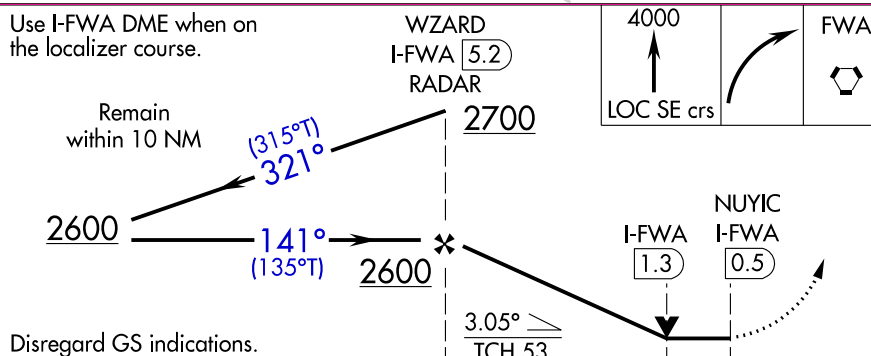
BACK COURSE

DME or RADAR REQUIRED

PROTOTYPE-NOT
FOR NAVIGATION



Use I-FWA DME when on the localizer course.



Disregard GS indications.

CATEGORY	A	B	C	D	E
S-14	1320-1	518 (600-1)	1320-1 $\frac{3}{8}$	518 (600-1 $\frac{3}{8}$)	
C CIRCLING	1320-1	506 (600-1)	1420-1 $\frac{3}{4}$ 606 (700-1 $\frac{3}{4}$)	1520-2 $\frac{1}{4}$ 706 (800-2 $\frac{1}{4}$)	1520-2 $\frac{1}{2}$ 706 (800-2 $\frac{1}{2}$)

ELEV	815	D	TDZE	802

OLD

FORT WAYNE, INDIANA

AL-156 (FAA)

16259

LOC/DME I-FWA 109.9 Chan 36	APP CRS 138°	Rwy Idg TDZE 802 Apt Elev 814
---	------------------------	---

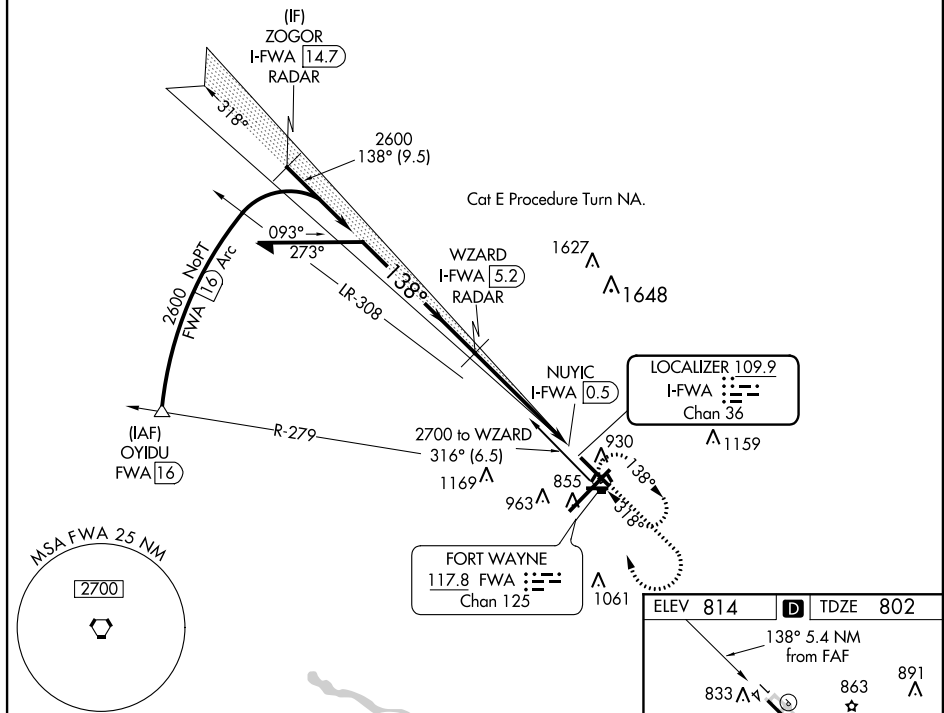
LOC BC RWY 14
FORT WAYNE INTL (FWA)

 ASR	DME or radar required.	MISSED APPROACH: Climb to 4000 on I-FWA southeast course then right turn direct FWA VORTAC and hold.
--	------------------------	--

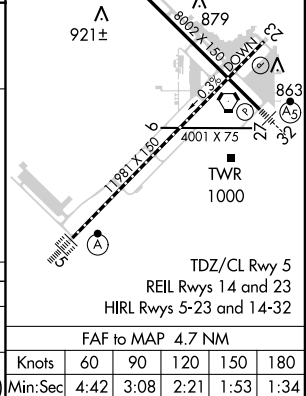
ATIS 121.25 349.0	FORT WAYNE APP CON 127.2 284.6	FORT WAYNE TOWER 119.1 272.725	GND CON 121.9 348.6	CLNC DEL 124.75
-----------------------------	--	--	-------------------------------	---------------------------

BACK COURSE

DME or RADAR REQUIRED



Use I-FWA DME when on the localizer course.		WZARD I-FWA 5.2 RADAR		4000	LOC SE crs	FWA
Remain within 10 NM		2700				
2600		318°				
2600		138°				
Disregard GS indications.		2600				
		3.05° TCH 53				
		3.9 NM				
		0.8 NM				
		0.7				
CATEGORY	A	B	C	D	E	
S-14	1320-1	518 (600-1)	1320-1 $\frac{3}{8}$	518 (600-1 $\frac{3}{8}$)		
CIRCLING	1320-1	506 (600-1)	1420-1 $\frac{3}{4}$ 606 (700-1 $\frac{3}{4}$)	1520-2 $\frac{1}{4}$ 706 (800-2 $\frac{1}{4}$)	1520-2 $\frac{1}{2}$ 706 (800-2 $\frac{1}{2}$)	



FORT WAYNE, INDIANA

Amdt 15B 30APR15

40°59'N-85°12'W

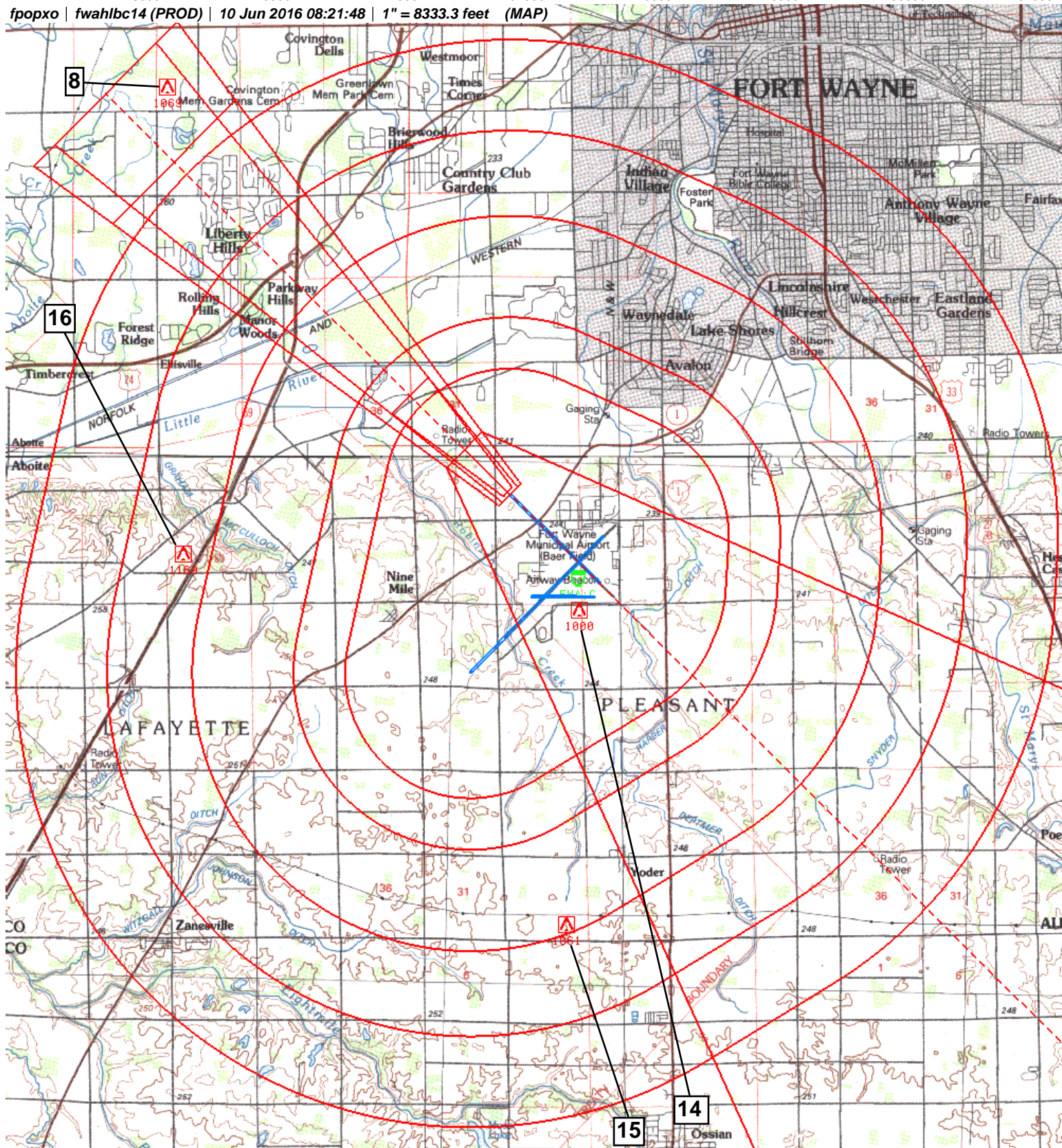
FORT WAYNE INTL (FWA)
LOC BC RWY 14

EC-2, 13 OCT 2016 to 10 NOV 2016

EC-2, 13 OCT 2016 to 10 NOV 2016

NM 1 2 3 4 5 6 7 8 9 10
 FT 8000 16000 24000 32000 40000 48000 56000 64000

fpopxo | fwahlbc14 (PROD) | 10 Jun 2016 08:21:48 | 1" = 8333.3 feet (MAP)



Airport ID:	KFWA				
Apt Name:	FORT WAYNE INTL		SEGMENT	OBSTRUCTION	ELEV
City:	FORT WAYNE		8. FINAL	AAO	1069
State:	IN		14. CIRC CAT A/B	ATCT	1000
Proc ID:	LOC BC RWY 14		15. CIRC CAT C	TOWER	1061
Amdt #:	15C		16. CIRC CAT D/E	TOWER	1169
Scale:	1:100,000				