

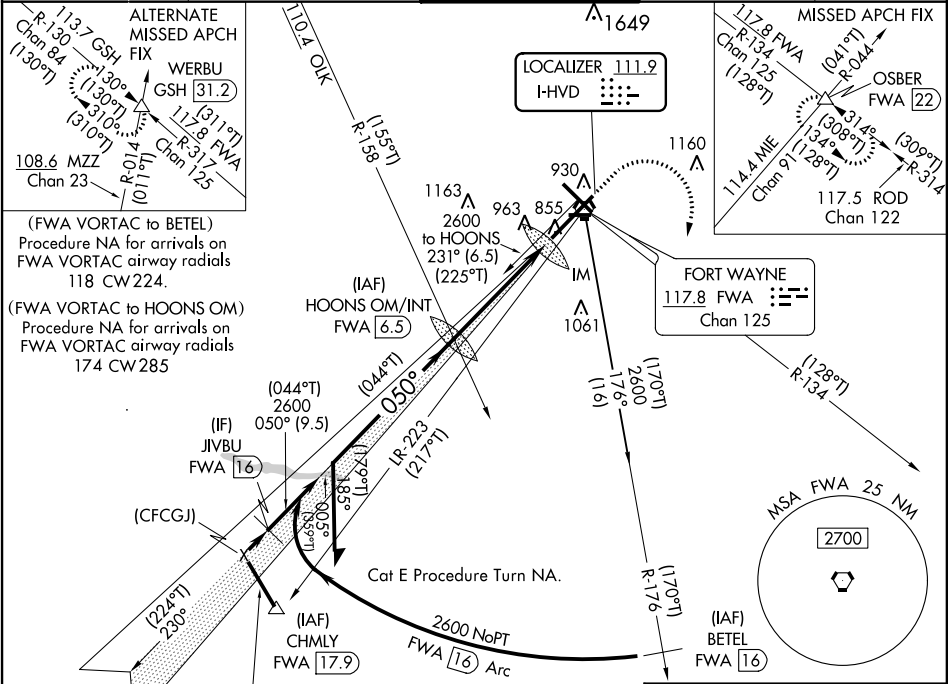
<b>Flight Procedure Tracking Form</b>		<b>Action:</b> FLIGHT CHECK	<b>Task Type:</b> IAP	<b>Date Open:</b> 03/24/2015	<b>Task #:</b> 2014071726505803002	<b>Request #:</b> 20140717265058
<b>Procedure:</b> ILS OR LOC RWY 5 AMDT 15B			<b>Airport ID:</b> KFWA	<b>Airport:</b> FORT WAYNE INTL	<b>Reimbursable #:</b> NO	
<b>City:</b> FORT WAYNE	<b>ST:</b> IN	<b>GPS #:</b>	<b>Estimated Chart Date:</b> 04/27/2017		<b>FICO #:</b> 1172570	
<b>Fac ID:</b> N/A		<b>Fac. Type:</b>		<b>Specialist:</b> PABLO ORTIZ		
<b>Procedure Review</b>						
	<b>Rec'd</b>	<b>Rel'd</b>	<b>Full Name</b>	<b>Comments</b>		
<b>Lead:</b>	04/25/2016	08/24/2016	JACOB POWERS	<div>QUALITY</div> <div>10</div> <div>CHECKED</div>		
<b>QA:</b>	08/24/2016	08/24/2016	JACOB POWERS			
<b>Liaison:</b>	08/24/2016	08/24/2016	MARY MCDONALD			
<b>Procedure Comments:</b>			ENROUTE-NON	<b>Remark Type:</b> INFORMATION		
<p>ASSIGNED MAG/VAR</p> <p>FWA ILS : OLD 3W - NEW 6W</p> <p>HVD ILS: OLD 5W - NEW 6W</p> <p>FWA ASR: OLD 3W - NEW 6W</p> <p>KFWA: OLD 3W - NEW 6W</p> <p>FWA VORTAC: OLD 0E - NEW 6W</p> <p>PENDING DATA USED FOR KFWA AIRPORT AND RUNWAYS</p> <p>PENDING DATA USED FOR FWA ILS, HVD ILS, FWA ASR</p> <p>CONTACT: STEVEN VARGAS, AJV-5421 / PETER GETZ, AJV-5423 / JULIE MORGAN AJV-5422, 405.954.0695/4919/8568</p> <p>01/04/17: THIS IS AN UPDATED COPY OF THE FORM DEVELOPED ON 08/03/16.</p> <p>1. ADDED FWA VORTAC: OLD 0E - NEW 6W.</p> <p>2. UPDATED ALL COURSE AND RADIALS UTILIZING FWA VORTAC PLUS 6 DEGREES.</p> <p>3. UPDATED LOC MISSED APPROACH FROM LOC: 5.05 NM AFTER HOONS OM/INT/FWA 6.53 DME OR AT FWA 1.49 DME FIX TO LOC: 5.05 NM AFTER HOONS OM/INT/FWA 6.53 DME OR AT FWA 1.49 DME.</p> <p>4. ADDED CHART PLANVIEW NOTE (FWA VORTAC TO BETEL) PROCEDURE NA FOR ARRIVAL ON FWA VORTAC AIRWAY RADIALS 118 CW 224. (FWA VORTAC TO HOONS OM) PROCEDURE NA FOR ARRIVAL ON FWA VORTAC AIRWAY RADIALS 174 CW 285.</p>						

LOC I-HVD <b>111.9</b>	APP CRS <b>050°</b>	Rwy Idg <b>11981</b> TDZE <b>815</b> Apt Elev <b>815</b>
---------------------------	------------------------	--

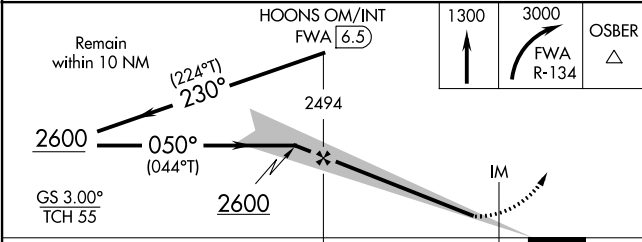
ILS or LOC RWY 5  
FORT WAYNE INTL (F'WA)

For inop ALS, increase S-ILS 5 Cat E visibility to RVR 4000 and increase S-LOC 5 Cat C/D/E visibility to 1 1/2 SM. <b>ASR</b>	<b>ALSIF-2</b> 	<b>MISSED APPROACH:</b> Climb to 1300 then climbing right turn to 3000 on FWA R-134 to OSBER INT/FWA 22 DME and hold.
--	--------------------	---

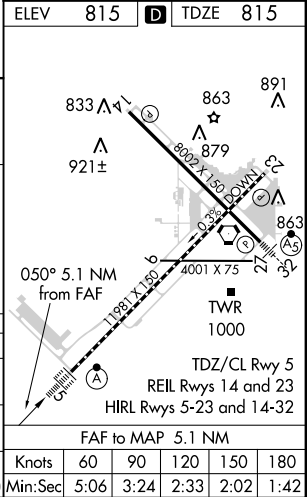
<b>ATIS</b> <b>121.25 349.0</b>	<b>FORT WAYNE APP CON</b> <b>127.2 284.6</b>	<b>FORT WAYNE TOWER</b> <b>119.1 272.725</b>	<b>GND CON</b> <b>121.9 348.6</b>	<b>CLNC DEL</b> <b>124.75</b>
------------------------------------	---	---	--------------------------------------	----------------------------------



PROTOTYPE-NOT FOR NAVIGATION

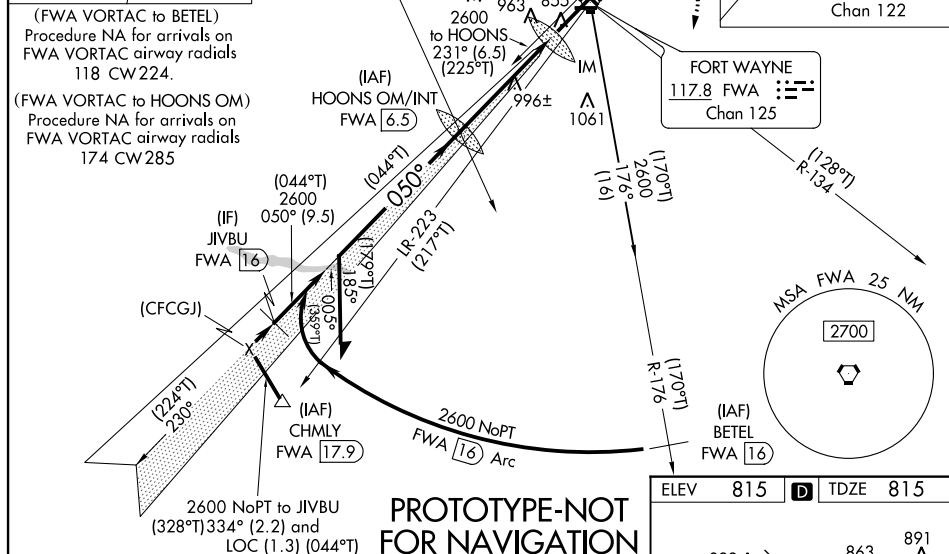


CATEGORY	A	B	C	D	E
S-ILS 5		1015/18	200 (200-1/2)		1015/24 200 (200-1/2)
S-LOC 5	1300/24	485 (500-1/2)	1300/50	485 (500-1)	
CIRCLING	1300-1	485 (500-1)	1420-1 3/4 605 (700-1 3/4)	1520-2 1/4 705 (800-2 1/4)	1520-2 1/2 705 (800-2 1/2)



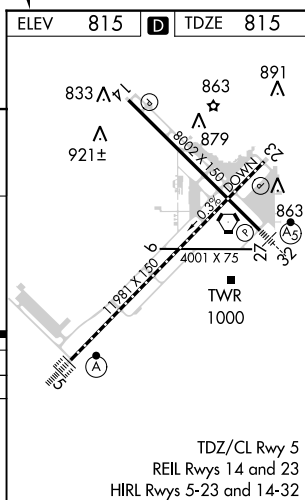
**ILS RWY 5 (CAT II)**  
FORT WAYNE INTL (FWA)

(FWA VORTAC to HOONS OM)  
Procedure NA for arrivals on  
FWA VORTAC airway radials  
174 CW285

[illegible]


CATEGORY	A	B	C	D
S-ILS 5	RA 106/12 100 DA 915			

CATEGORY II ILS - SPECIAL AIRCREW  
& AIRCRAFT CERTIFICATION REQUIRED

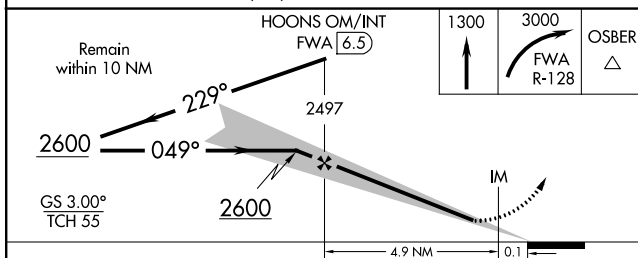
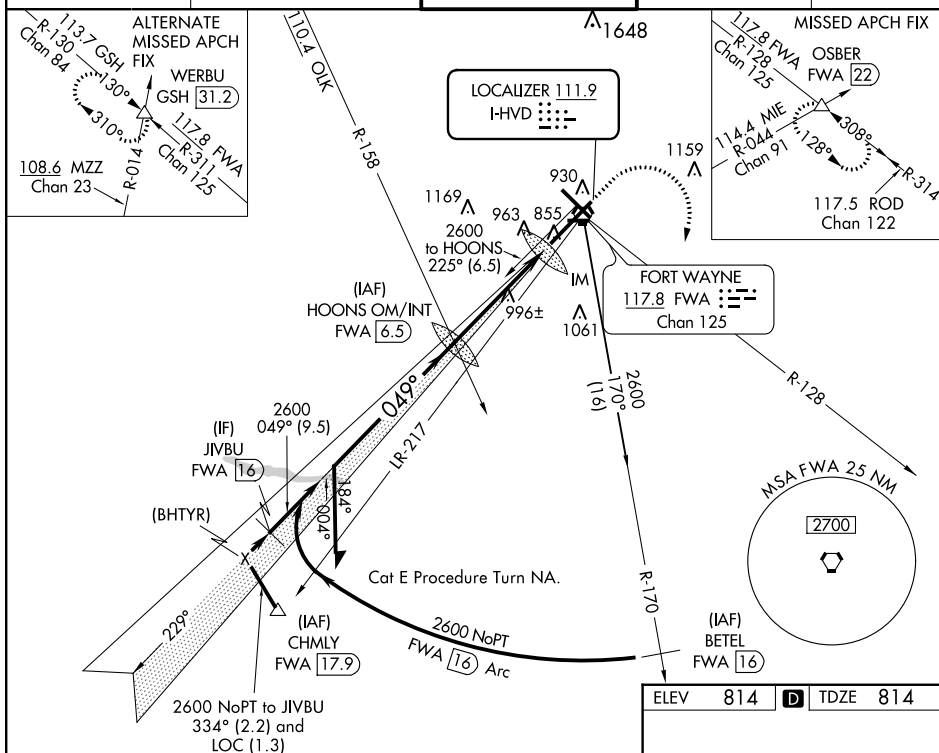


LOC I-HVD <b><u>111.9</u></b>	APP CRS <b>049°</b>	Rwy Idg <b>11981</b> TDZE <b>814</b> Apt Elev <b>814</b>
----------------------------------	------------------------	--

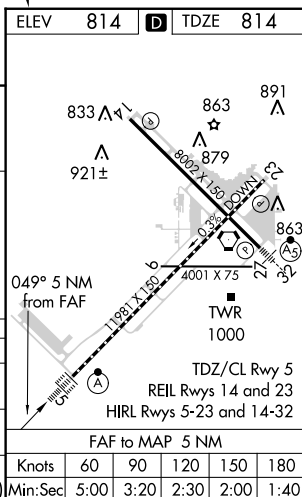
ILS or LOC RWY 5  
FORT WAYNE INTL (FWA)

<p>▼ For inoperative ALSF-2, increase S-ILS 5 Cat E visibility to RVR 4000 and increase S-LOC 5 Cat E visibility to 1½ mile.</p> <p>▲ ASR</p>	<p>ALSF-2</p> 	<p>MISSED APPROACH: Climb to 1300 then climbing right turn to 3000 via FWA R-128 to OSBER INT/FWA 22 DME and hold.</p>
---	---	--

ATIS 121.25 349.0	FORT WAYNE APP CON 127.2 284.6	FORT WAYNE TOWER 119.1 272.725	GND CON 121.9 348.6	CLNC DEL 124.75
----------------------	-----------------------------------	-----------------------------------	------------------------	--------------------







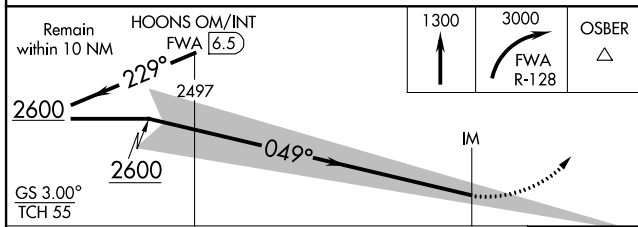
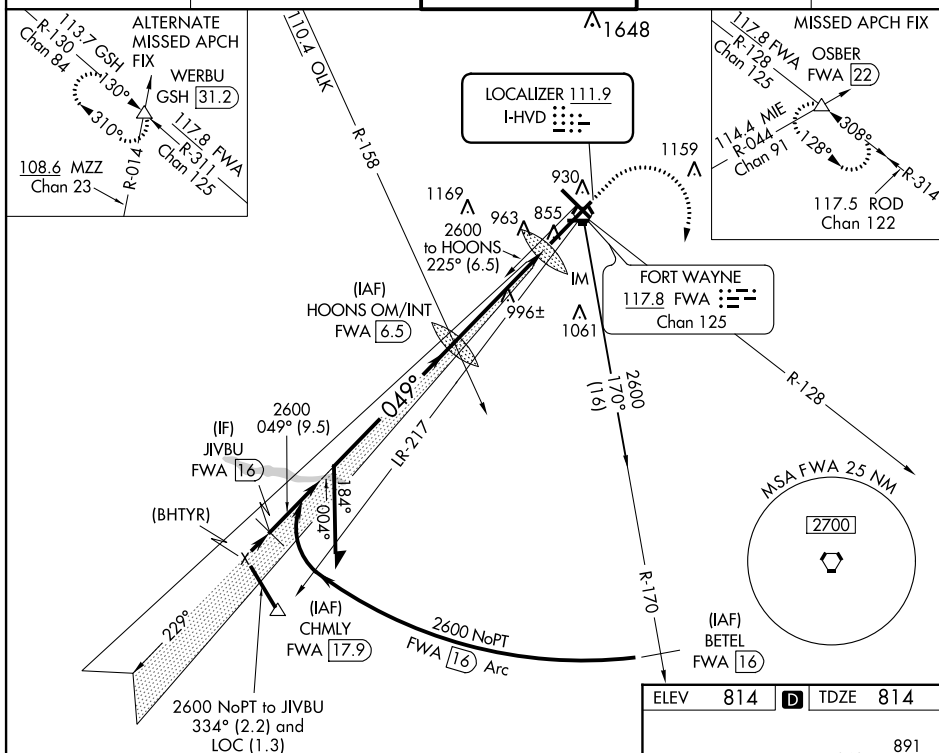
CATEGORY	A	B	C	D	E
S-ILS 5	1014/18 200 (200-½)				1014/24 200 (200-½)
S-LOC 5	1260/24	446 (500-½)	1260/40 446 (500-¾)	1260/50	446 (500-1)
CIRCLING	1320-1	506 (600-1)	1320-1½ 506 (600-1½)	1380-2 566 (600-2)	1520-2½ 706 (800-2½)



LOC I-HVD <b><u>111.9</u></b>	APP CRS <b>049°</b>	Rwy Idg <b>11981</b> TDZE <b>814</b> Apt Elev <b>814</b>
----------------------------------	------------------------	--

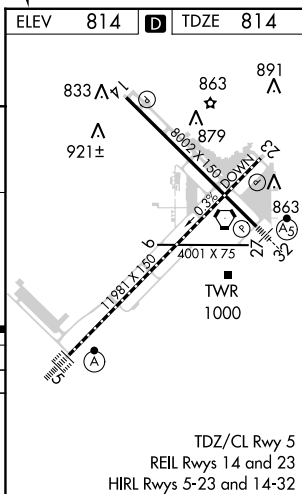
# ILS RWY 5 (CAT II) FORT WAYNE INTL (FWA)

  ASR		ALSIF-2  		MISSED APPROACH: Climb to 1300 then climbing right turn to 3000 via FWA R-128 to OSBER INT/FWA 22 DME and hold.	
ATIS <b>121.25 349.0</b>		FORT WAYNE APP CON <b>127.2 284.6</b>		FORT WAYNE TOWER <b>119.1 272.725</b>	
				GND CON <b>121.9 348.6</b>	
				CLNC DEL <b>124.75</b>	



CATEGORY	A	B	C	D
S-ILS 5	RA 106/12 100 DA 914			

CATEGORY II ILS - SPECIAL AIRCREW  
& AIRCRAFT CERTIFICATION REQUIRED

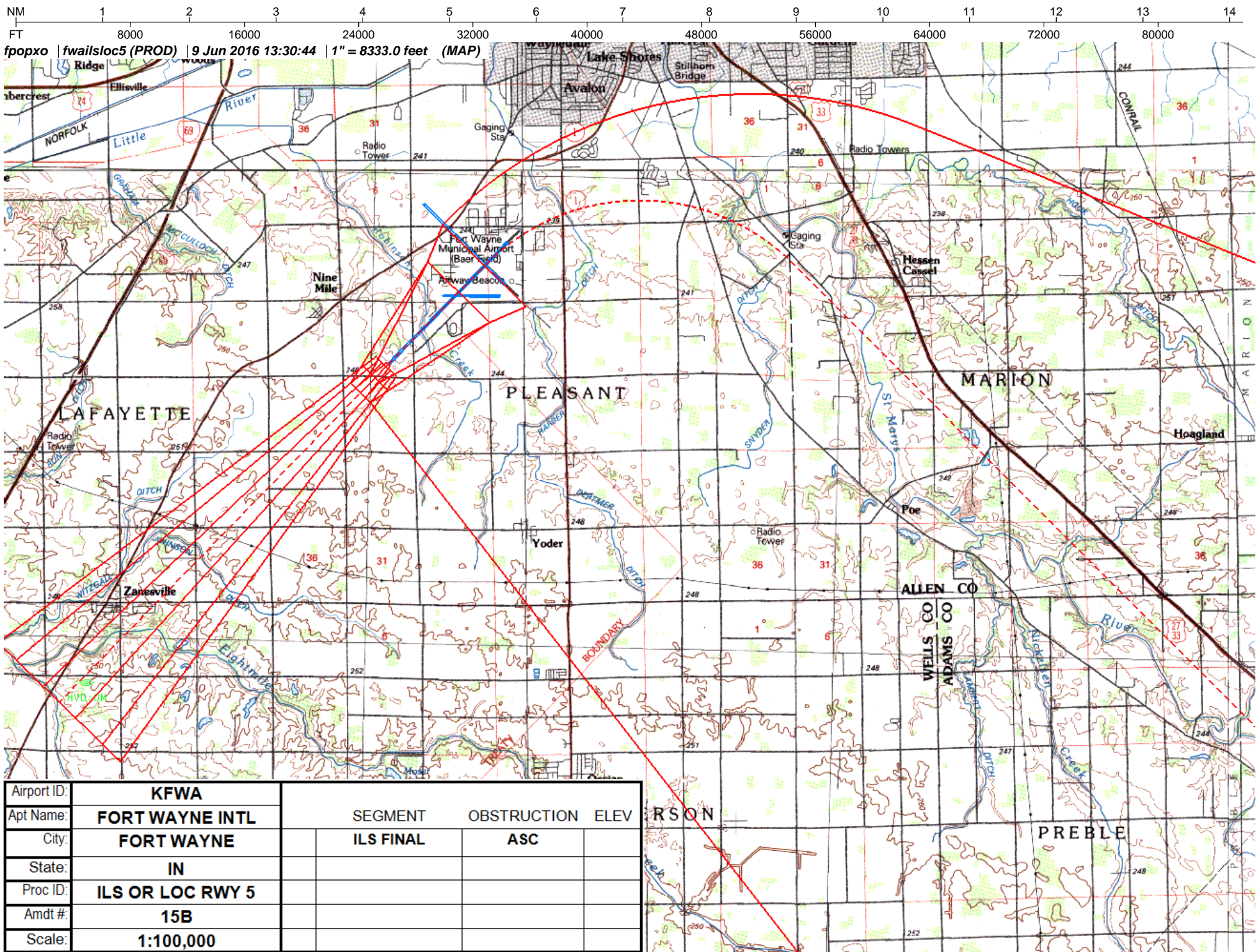




***fpopxo | fwailsloc5 (PROD) | 25 Oct 2016 12:25:05 | 1" = 41666.7 feet (MAP)***

Airport ID:	KFWA				
Apt Name:	FORT WAYNE INTL	SEGMENT		OBSTRUCTION	ELEV
City:	FORT WAYNE		ILS FINAL	ASC	
State:	IN	12.	MISSED LVL SFC / MISSED HOLDING	TOWER	1223
Proc ID:	ILS OR LOC RWY 5				
Amdt #:	15B				
Scale:	1:100,000				

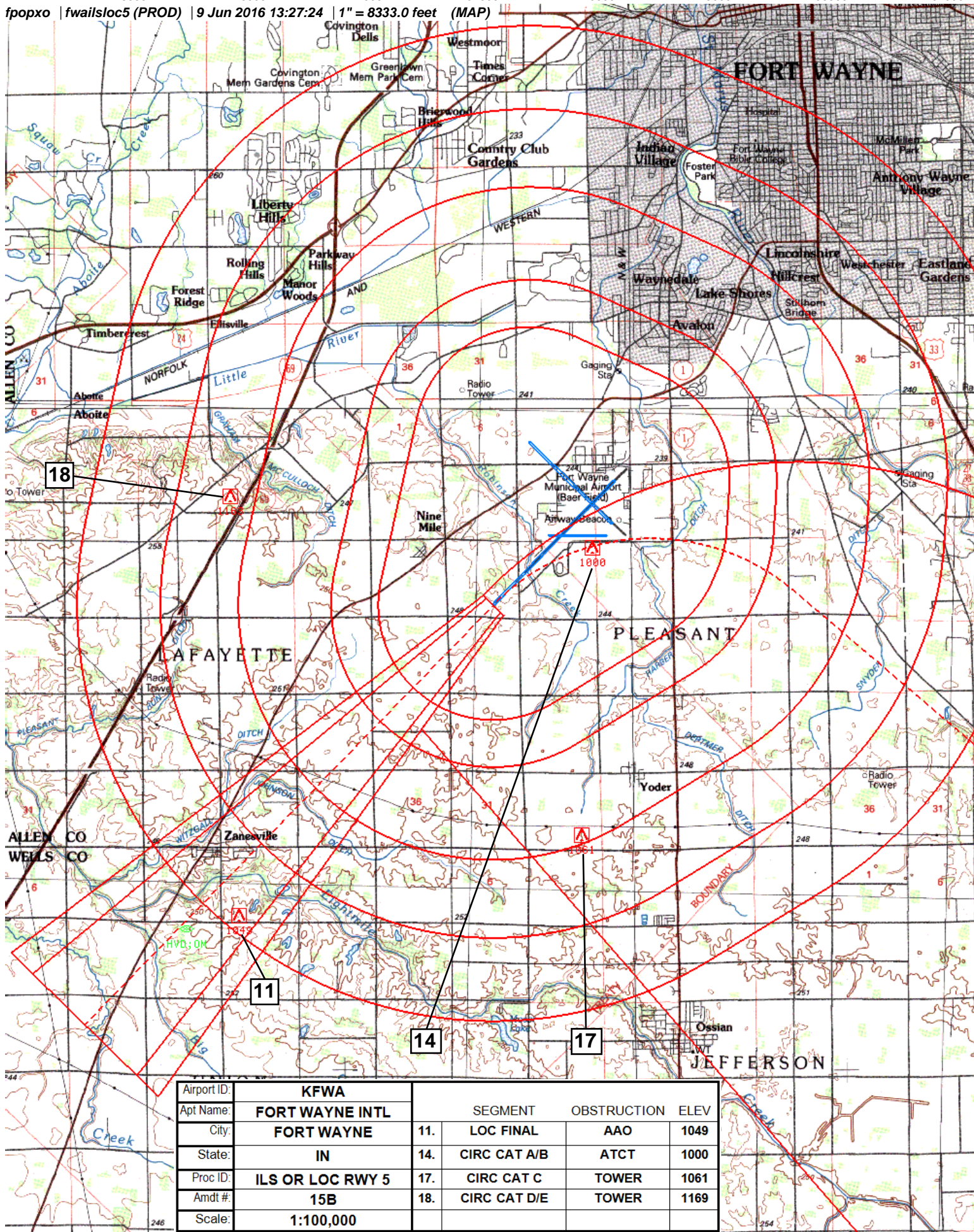






NM 1 2 3 4 5 6 7 8 9 10  
FT 8000 16000 24000 32000 40000 48000 56000 64000

fpopxo | fwailsloc5 (PROD) | 9 Jun 2016 13:27:24 | 1" = 8333.0 feet (MAP)









NM 1 2 3 4 5 6 7 8 9 10  
FT 8000 16000 24000 32000 40000 48000 56000 64000

fpopxo | fwailc5am (PROD) | 9 Jun 2016 13:36:23 | 1" = 8333.3 feet (MAP)

Airport ID	KFWA	ALTERNATE MISSED		
Apt Name:	FORT WAYNE INTL	SEGMENT	OBSTRUCTION	ELEV
City:	FORT WAYNE	11. LOC FINAL	AAO	1049
State:	IN			
Proc ID:	ILS OR LOC RWY 5			
Amdt #:	15B			
Scale:	1:100,000			

