




Flight Procedure Tracking Form		Action: FLIGHT CHECK	Task Type: IAP	Date Open: 07/16/2014	Task #: 2014071630265201001	Request #: 20140716302652
Procedure: RNAV (GPS) RWY 2 AMDT 2			Airport ID: PAMO	Airport: MOUNTAIN VILLAGE		Reimbursable #: NO
City: MOUNTAIN VILLAGE	ST: AK	GPS #:	Estimated Chart Date: 10/10/2019		FICO #:	
Fac ID: N/A		Fac. Type:			Specialist: MARK CIARLONE	
Procedure Review						
	Rec'd	Rel'd	Full Name	Comments		
Lead:	10/19/2018	01/07/2019	ALLAN WILL	 <i>Digitally signed by</i>		
QA:	01/07/2019			 DAVID W SAUER		
Liaison:				 Apr 26, 2019		
Procedure Comments: ENROUTE-NON Remark Type: INFORMATION WAAS PROJECT. MAGVAR UPDATE: PAMO - FROM 14E TO 10E. PENDING 4/25/2019 AIRPORT DATA USED. CONTACT: JULIE MORGAN, AJV-A420 MANAGER, 405.954.8568.						

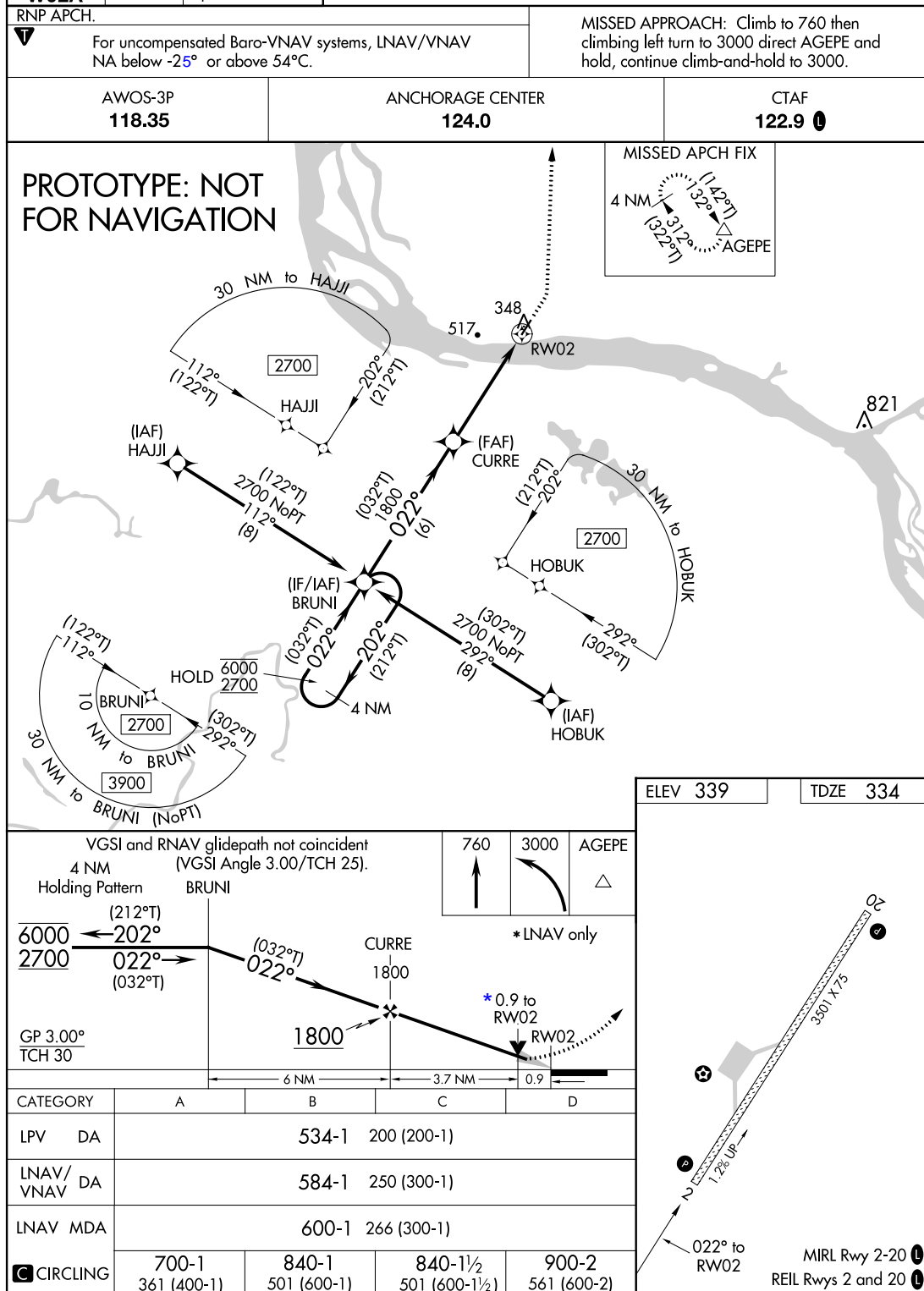
MOUNTAIN VILLAGE, ALASKA

AL-9445 (FAA)

FIG

WAAS CH 56244 W02A	APP CRS 022°	Rwy Idg TDZE Apt Elev	3501 334 339
--	------------------------	-----------------------------	---

RNAV (GPS) RWY 2 **MOUNTAIN VILLAGE (MOU) (PAMO)**



AUTOMATED AL-9445 RNAV (GPS) RWY 2

AK

11 JAN 2019

COMPILER: CG

REVIEWER:

DBL CHKR:

EFF DATE: FIG

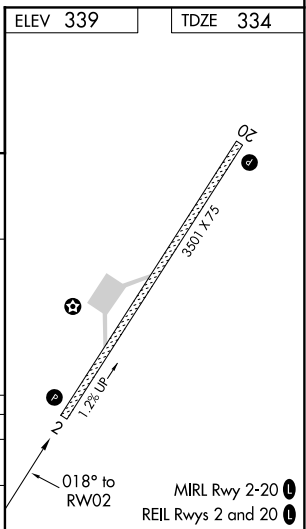
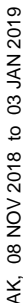
CURRENT

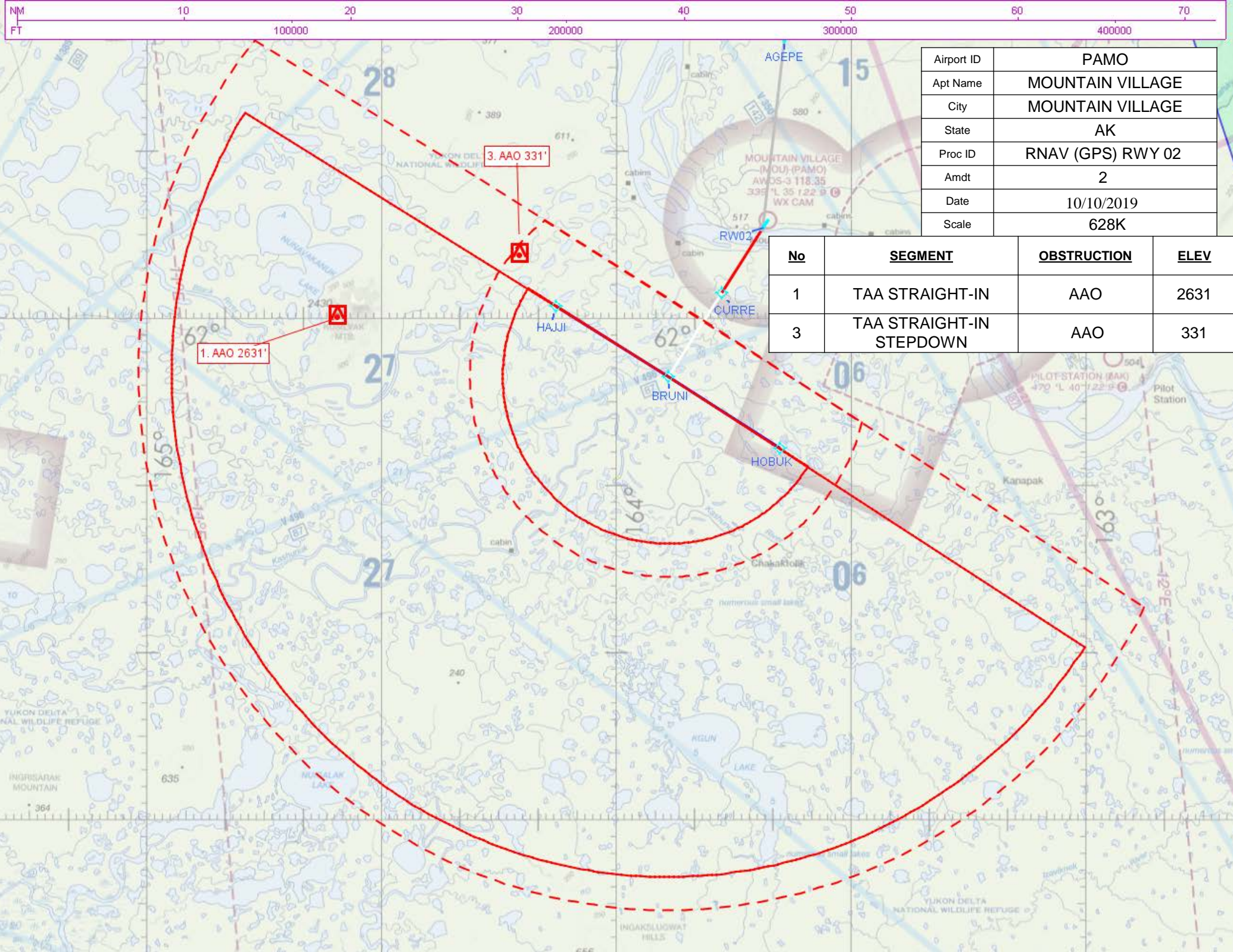
RNAV (GPS) RWY 2

MOUNTAIN VILLAGE (MOU) (PAMO)

T When local altimeter setting not received,
A use St. Mary's altimeter setting and increase all MDA 40 feet.

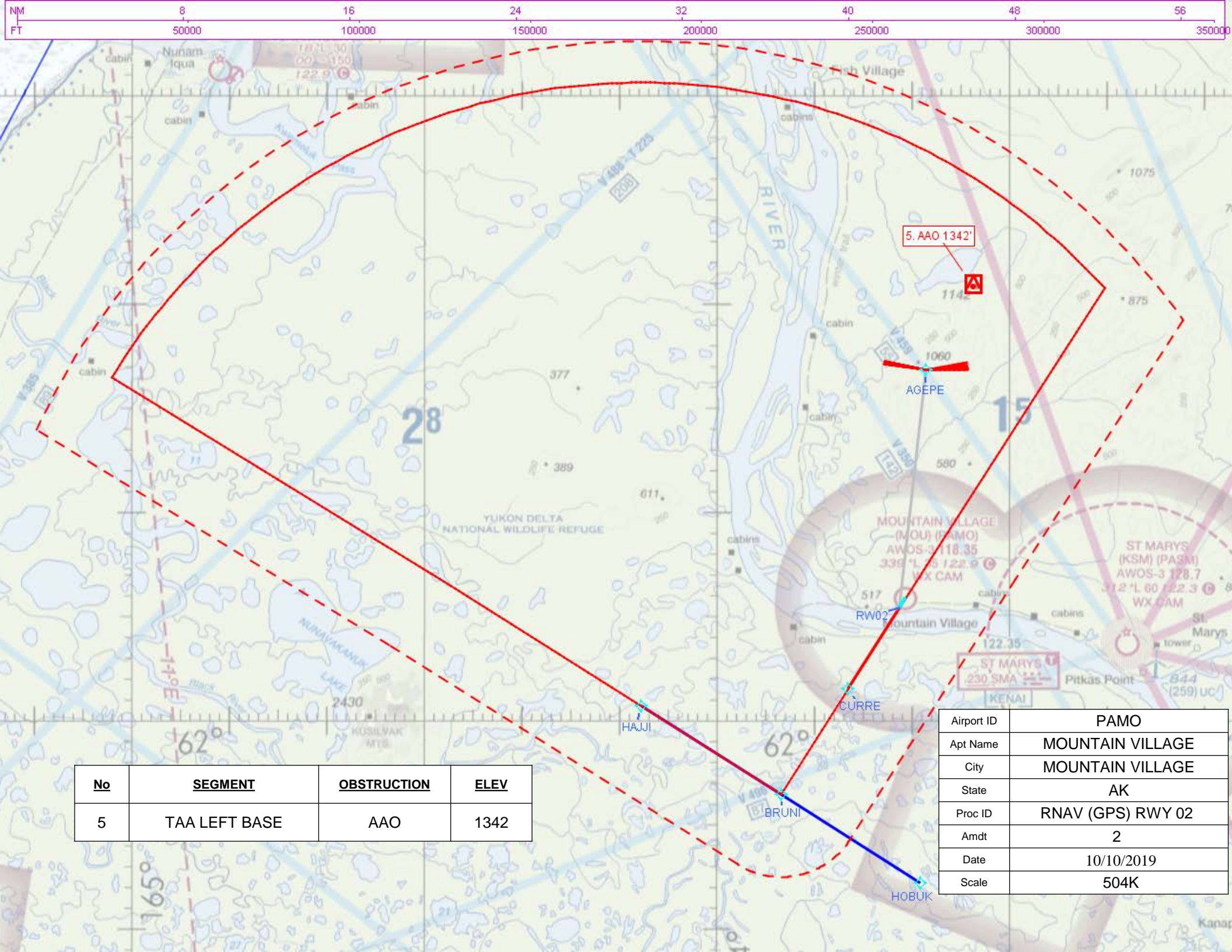
MISSED APPROACH: Climb to 3000 direct TEYUT on track 344° to AGEPE and hold.

CTAF
122.9 **L**



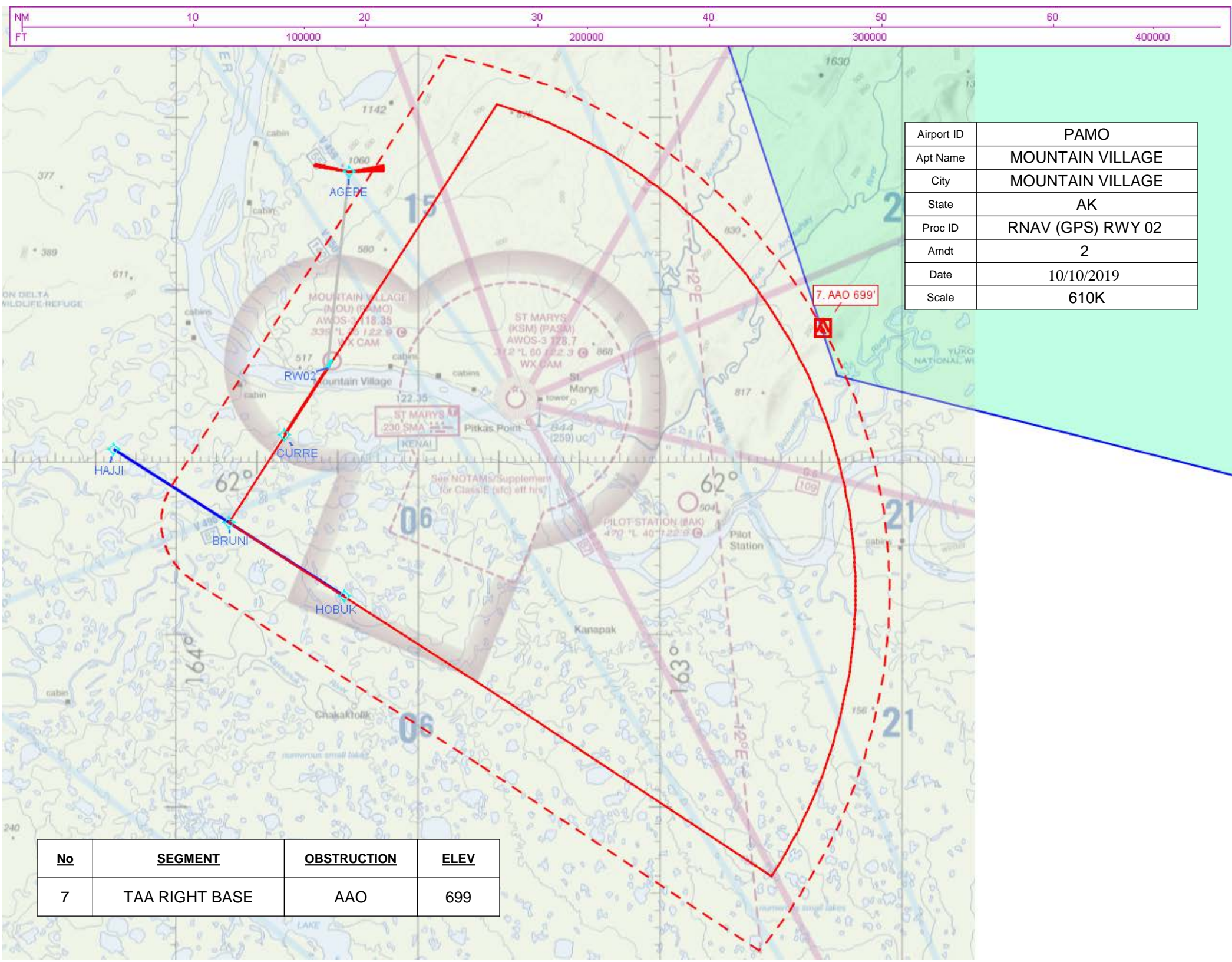
Airport ID	PAMO
Apt Name	MOUNTAIN VILLAGE
City	MOUNTAIN VILLAGE
State	AK
Proc ID	RNAV (GPS) RWY 02
Amdt	2
Date	10/10/2019
Scale	628K

No	SEGMENT	OBSTRUCTION	ELEV
1	TAA STRAIGHT-IN	AAO	2631
3	TAA STRAIGHT-IN STEPDOWN	AAO	331



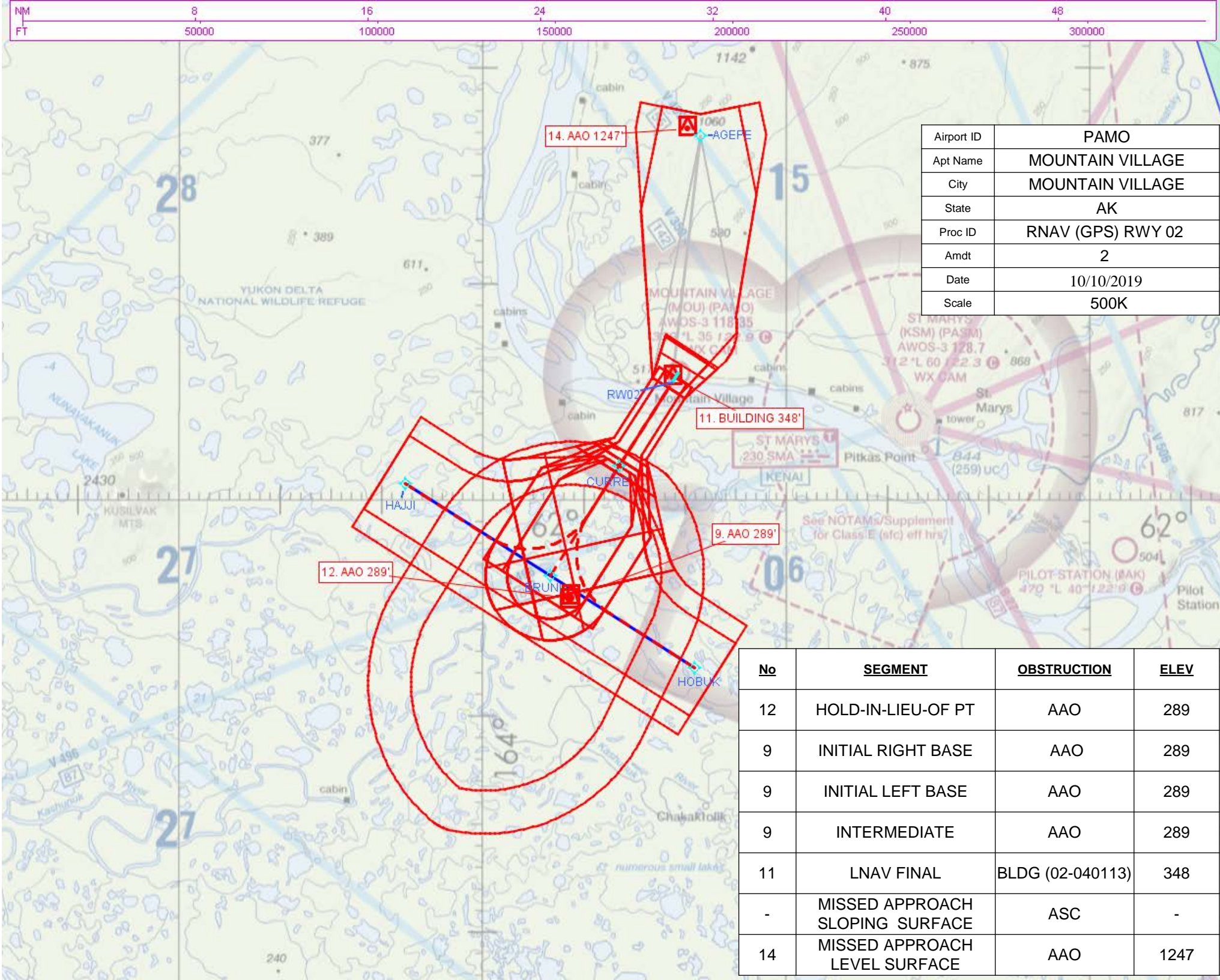
No	SEGMENT	OBSTRUCTION	ELEV
5	TAA LEFT BASE	AAO	1342

Airport ID	PAMO
Apt Name	MOUNTAIN VILLAGE
City	MOUNTAIN VILLAGE
State	AK
Proc ID	RNAV (GPS) RWY 02
Amdt	2
Date	10/10/2019
Scale	504K



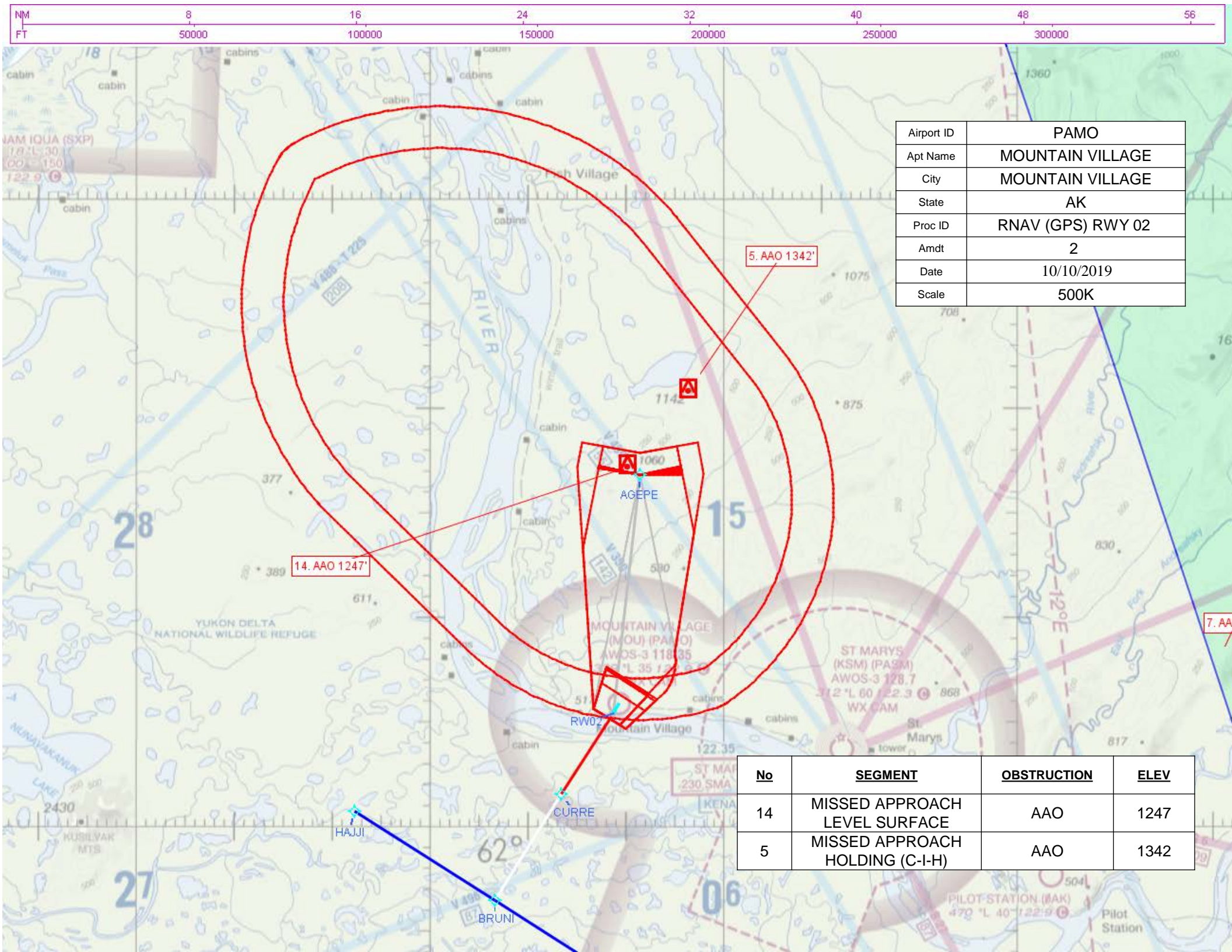
Airport ID	PAMO
Apt Name	MOUNTAIN VILLAGE
City	MOUNTAIN VILLAGE
State	AK
Proc ID	RNAV (GPS) RWY 02
Amdt	2
Date	10/10/2019
Scale	610K

No	SEGMENT	OBSTRUCTION	ELEV
7	TAA RIGHT BASE	AAO	699



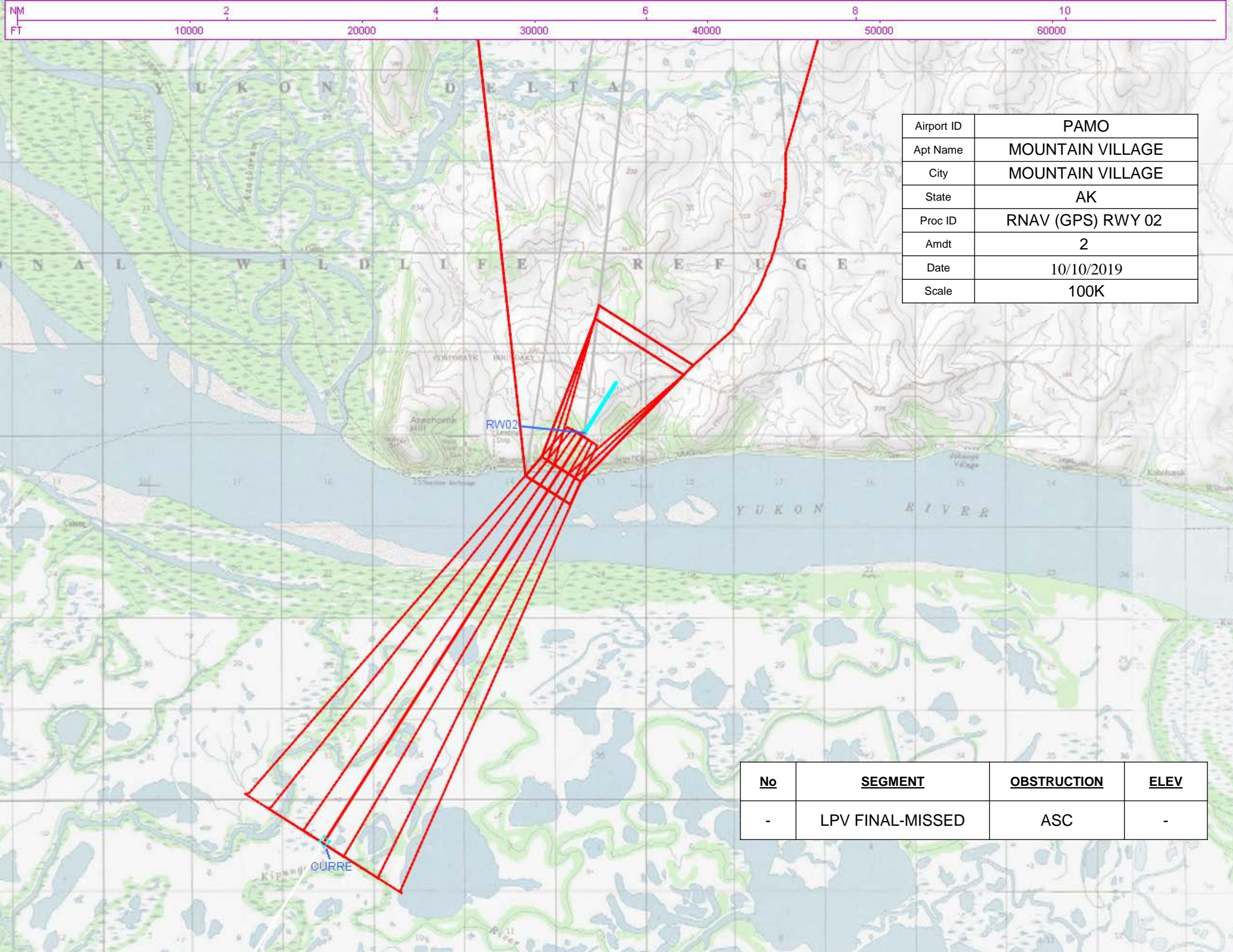
Airport ID	PAMO
Apt Name	MOUNTAIN VILLAGE
City	MOUNTAIN VILLAGE
State	AK
Proc ID	RNAV (GPS) RWY 02
Amdt	2
Date	10/10/2019
Scale	500K

No	SEGMENT	OBSTRUCTION	ELEV
12	HOLD-IN-LIEU-OF PT	AAO	289
9	INITIAL RIGHT BASE	AAO	289
9	INITIAL LEFT BASE	AAO	289
9	INTERMEDIATE	AAO	289
11	LNAV FINAL	BLDG (02-040113)	348
-	MISSED APPROACH SLOPING SURFACE	ASC	-
14	MISSED APPROACH LEVEL SURFACE	AAO	1247



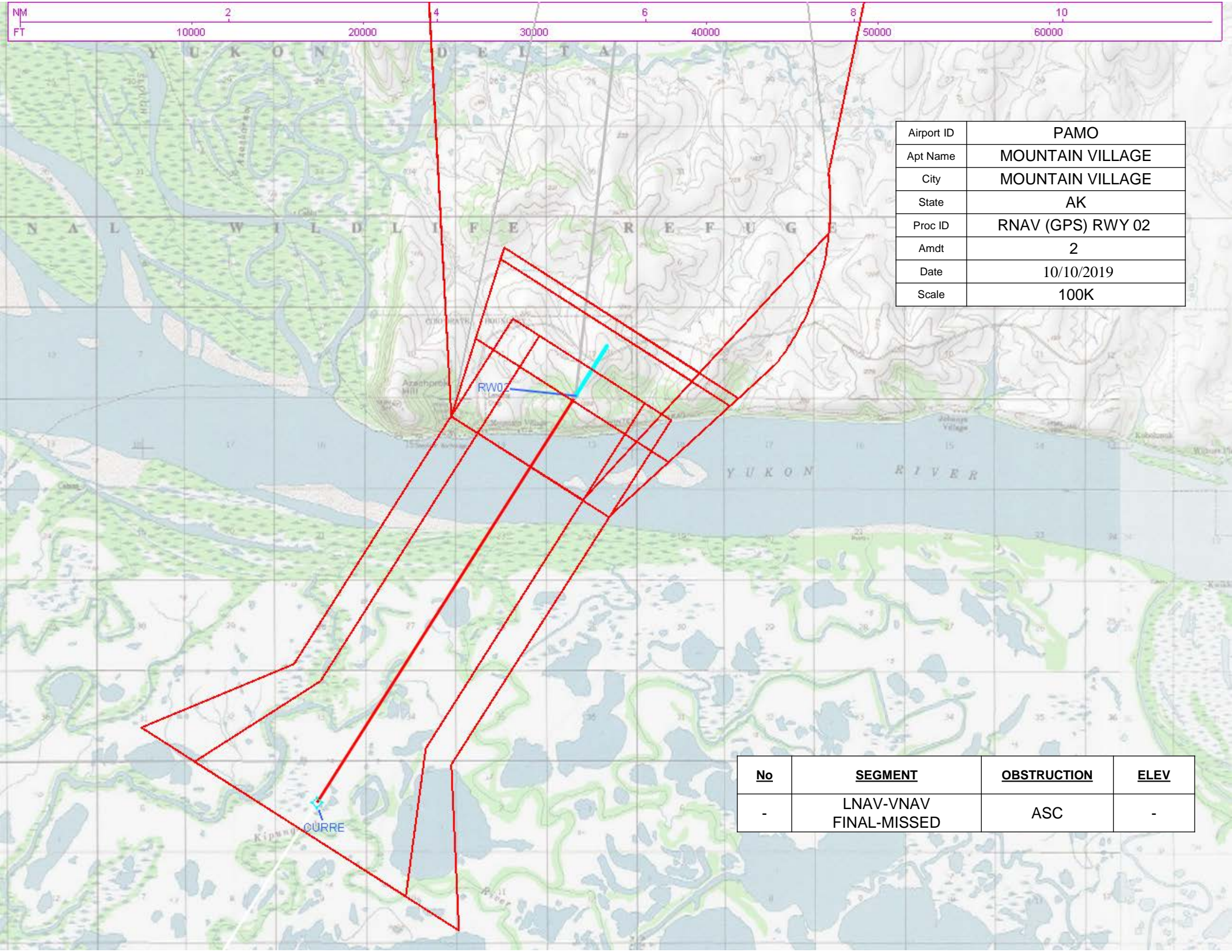
Airport ID	PAMO
Apt Name	MOUNTAIN VILLAGE
City	MOUNTAIN VILLAGE
State	AK
Proc ID	RNAV (GPS) RWY 02
Amdt	2
Date	10/10/2019
Scale	500K

No	SEGMENT	OBSTRUCTION	ELEV
14	MISSED APPROACH LEVEL SURFACE	AAO	1247
5	MISSED APPROACH HOLDING (C-I-H)	AAO	1342



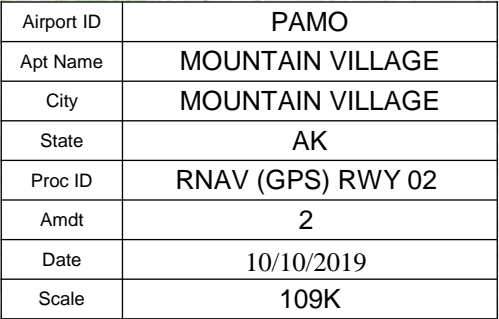
Airport ID	PAMO
Apt Name	MOUNTAIN VILLAGE
City	MOUNTAIN VILLAGE
State	AK
Proc ID	RNAV (GPS) RWY 02
Amdt	2
Date	10/10/2019
Scale	100K

No	SEGMENT	OBSTRUCTION	ELEV
-	LPV FINAL-MISSED	ASC	-



Airport ID	PAMO
Apt Name	MOUNTAIN VILLAGE
City	MOUNTAIN VILLAGE
State	AK
Proc ID	RNAV (GPS) RWY 02
Amdt	2
Date	10/10/2019
Scale	100K

No	SEGMENT	OBSTRUCTION	ELEV
-	LNAV-VNAV FINAL-MISSED	ASC	-



**DEPARTMENT OF TRANSPORTATION
FEDERAL AVIATION ADMINISTRATION
CATEGORICAL EXCLUSION DECLARATION**

**Mountain Village Airport
Mountain Village, Alaska**

**MAGVAR Update
RNAV (GPS) RWY 2
RNAV (GPS) RWY 20
Obstacle Departure Procedure**

Description of Action:

The FAA is proposing to update the magnetic variation (MAGVAR) and amend two Area Navigation (RNAV) procedures and obstacle departure procedure (ODP) at Mountain Village Airport (PAMO), Mountain Village, Alaska. In accordance with regulatory mandate, the magnetic variation (MAGVAR) for PAMO is to be updated from E14/2000 to E10/2020. Correctly aligning the airport with the magnetic variance of the area allows for more accurate course information and safer air traffic operations.

The FAA would amend existing flight procedures in accordance with current design criteria as follows:

- **RNAV global positioning system (GPS) RWY 2: Terminal Arrival Area (TAA)** segment altitudes at HAVAP and BRUNI waypoints would decrease from 3,550 feet to 3,350 above ground level (AGL) feet at 30 NM. The TAYUT waypoint would be removed from the missed approach. Lateral Navigation (LNAV) minimums would be revised. Localizer Performance with Vertical Guidance (LPV) minimums would be revised, and LNAV/Vertical Navigation (VNAV) minimums would be added for category A, B, C, and D aircraft.
- **RNAV (GPS) RWY 20: Terminal Arrival Area (TAA)** segment altitudes at WERMA waypoint would increase from 2,750 feet to 2,850 feet at 30 NM. TAA segment altitudes at ZAVIP waypoint would increase from 2,200 feet at 30 NM to 2,550 feet AGL at 30 NM. LNAV minimums would be revised, and LPV and LNAV/VNAV minimums would be added for category A, B, C, and D aircraft.
- **ODP:** No obstructions were identified during a diverse departure evaluation.

The FAA Guidance for Noise Screening of Air Traffic Actions (December 2012) was used to complete the analysis of potential effects due to the change in aircraft noise exposure level as a result of implementation the proposed action. The Operations Test (OPS) was utilized to conduct a noise prescreening evaluation of the proposed instrument procedures. The results of the OPS test indicated that no further noise screening is necessary based on the number of operations at PAMO.

Declaration of Exclusion:

The FAA has reviewed the above referenced proposed action and it has been determined, by the undersigned, to be categorically excluded from further environmental documentation according to FAA Order 1050.1F, "Environmental Impacts: Policies and Procedures." The implementation of this action will not result in any extraordinary circumstances in accordance with FAA Order 1050.1F.

Basis for this Determination:

The Aircraft Procedure Environmental Pre-Screening Filter was processed and reviewed by the Western Service Center. This review was conducted in accordance with policies and procedures in Department of Transportation Order 5610.1C, "Procedures for Considering Environmental Impacts" and FAA Order 1050.1F.

The applicable categorical exclusion is:

5-6.5.i. - Establishment of new or revised air traffic control procedures conducted at 3,000 feet or more above ground level (AGL); procedures conducted below 3,000 feet AGL that do not cause traffic to be routinely routed over noise sensitive areas; modifications to currently approved procedures conducted below 3,000 feet AGL that do not significantly increase noise over noise sensitive areas; and increases in minimum altitudes and landing minima.

Recommended by:

Facility Manager Review/Concurrence

Signature: _____ Date: 8/21/18
Name: Paul McEwen
Air Traffic Manager,
Anchorage Air Route Traffic Control Center, WNA-ZAN

Concurrence by:

Western Service Area Environmental Specialist

Signature: _____ Date: _____
Name: Marina Landis
Environmental Protection Specialist, Operations Support Group,
Western Service Center, AJV-W22

Approval by:

Western Service Area Director or Designee Approval

Signature: _____ Date: _____
Name: Kim Stover
Director, Air Traffic Operations, North,
Western Service Area, AJTW

Magnetic Variation (MV) Declination Request

☐ New Assignment ☒ Change

Requested by: Lonnie Everhart

Organization: AJV-545

Phone:

Current Magnetic Declination of Record: 14 ° East

Epoch Year: 2005

New Magnetic Declination of Record: 10 ° East

Epoch Year: 2020

Airport Information

Airport ID: PAMO

NASR ID (if different): MOU

Airport Name: MOUNTAIN VILLAGE

Airport City: MOUNTAIN VILLAGE

State/Country: AK

Navigational Aid Information [ALL Facility IDs and Types]

* Facilities on Airports. At airports with localizer(s) or more than one navigational aid, the MV at the airport reference point (ARP) must be designated and assigned to all facilities at that airport, including all components of the ILS.

Concurrent with Publication of Procedure(s), list all affected procedures and include the AMDT.#

* The Procedure Tracking System (PTS) has Task Report Type "MAGVAR" available. Please add the MAGVAR Report Type Code to all task listed that are affected by the MV update.

RNAV (GPS) RWY 2 AMDT 2

RNAV (GPS) RWY 20 AMDT 2

MOUNTAIN VILLAGE (OBSTACLE) AK PAMO

AMDT 2

PTS Estimated Chart Date:

Comments:

Form Submission for Specialists:

Save this form to your computer, then email it
(as an attachment) to your Manager/Supervisor.

For Lead/Manager Use Only

Comments (if applicable):

MAGVAR - NO RUNWAY UPDATING

Lead/Manager:

Phone:

Submit to IFP Coordination Team