

<b>Flight Procedure Tracking Form</b>		<b>Action:</b> AMENDMENT	<b>Task Type:</b> IAP	<b>Date Open:</b> 03/30/2016	<b>Task #:</b> 2014071129278301016	<b>Request #:</b> 20140711292783
<b>Procedure:</b> RNAV (GPS) RWY 14 AMDT 1A			<b>Airport ID:</b> KTOI	<b>Airport:</b> TROY MUNI AIRPORT AT N KENNETH CAMPBELL FIELD		<b>Reimbursable #:</b> NO
<b>City:</b> TROY	<b>ST:</b> AL	<b>GPS #:</b>	<b>Estimated Chart Date:</b> 09/15/2016			<b>FICO #:</b>
<b>Fac ID:</b> N/A		<b>Fac. Type:</b>		<b>Specialist:</b> KELLY DEAN		
<b>Procedure Review</b>						
	<b>Rec'd</b>	<b>Rel'd</b>	<b>Full Name</b>	<b>Comments</b>		
<b>Lead:</b>	11/07/2014					
<b>QA:</b>			5/18/16 SC: P/L BD	13 Apr 2016		
<b>Liaison:</b>						
<b>Procedure Comments:</b>			<b>Remark Type:</b> INFORMATION			
P-NOTAM  POC FOR THIS ACTION IS ADOLFO URRUTIA OR JULIE MORGAN, 405-954-8830.						


[Print](#)

Project Name: KTOI RNAV (GPS) RWY 14 P-NOTAM TO CHANGE THRE TO TDZE

Project Reason: CHANGE THRE (397) TO TDZE (397).

Last Updated By: KELLY DEAN

Last Updated At: 2016-03-30 13:42:37.68174

Status: Verified 

615673  
!FDC ~~XXXXX~~ TOI IAP TROY MUNI AIRPORT AT N KENNETH CAMPBELL FIELD, TROY, AL. RNAV (GPS) RWY 14, AMDT 1... CHANGE THRE 397 TO TDZE 397. THIS IS RNAV (GPS) RWY 14, AMDT 1A. 1603301342-PERM



TROY, ALABAMA

AL-5720 (FAA)

16035

WAAS CH <b>56237</b> <b>W14A</b>	APP CRS <b>150°</b>	Rwy Idg THRE Apt Elev <b>397</b>	<b>5024</b> <b>397</b> <b>397</b>
--	------------------------	---	---

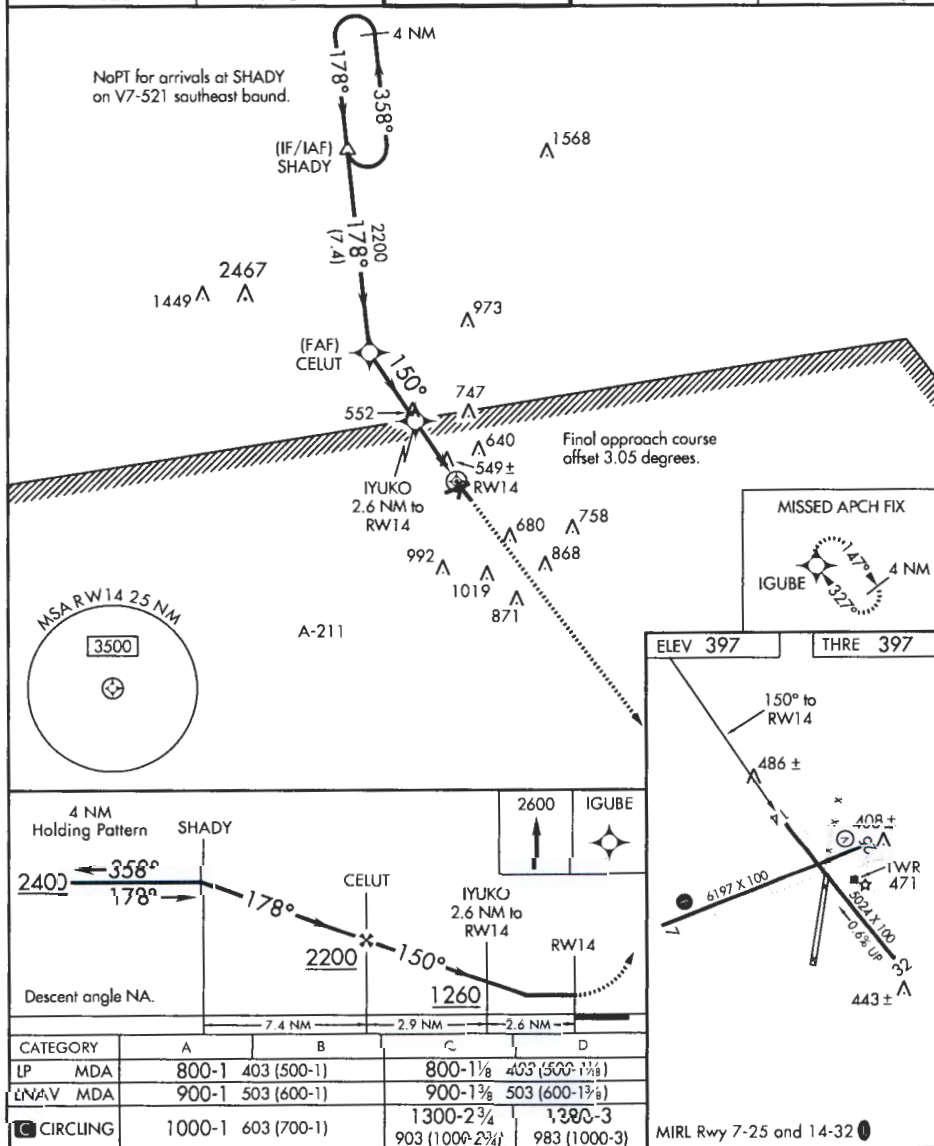
**RNAV (GPS) RWY 14**

TROY MUNI AIRPORT AT N KENNETH CAMPBELL FIELD (TOI)

<p>▼ DME/DME RNP-0.3 NA. When local altimeter setting not received, use Montgomery Rgnl (Dannelly Field) altimeter setting and increase all MDA 100 feet; increase LP visibility Cat C and D ¼ mile, UNAV visibility Cat C and D ⅜ mile, and Circling visibility Cat C ¼ mile. Helicopter visibility reduction below 1 SM NA. Rwy 14 Straight-in and Circling and Circling Rwy 32 NA at night.</p> <p>▲ ASR/PAR</p>	MISSED APPROACH: Climb to 2600 direct IGUBE and hold.
---	--

ATIS <b>120.925</b>	CAIRNS APP CON * <b>121.1 319.25</b>	TROY TOWER * <b>124.3 306.9</b>	GND CON <b>121.9 263.125</b>	UNICOM <b>122.8 (CTAF) 0</b>
------------------------	---	------------------------------------	---------------------------------	---------------------------------

SE-4, 03 MAR 2016 to 31 MAR 2016



SE-4, 03 MAR 2016 to 31 MAR 2016

TROY, ALABAMA  
Amdt 1 29MAY14TROY MUNI AIRPORT AT N KENNETH CAMPBELL FIELD (TOI)  
31°52'N-86°01'W**RNAV (GPS) RWY 14**