


Flight Procedure Tracking Form		Action: AMENDMENT	Task Type: IAP	Date Open: 03/22/2016	Task #: 2014071129278301009	Request #: 20140711292783
Procedure: NDB RWY 7 AMDT 12A			Airport ID: KTOI	Airport: TROY MUNI AIRPORT AT N KENNETH CAMPBELL FIELD		Reimbursable #: NO
City: TROY	ST: AL	GPS #:	Estimated Chart Date: 09/15/2016		FICO #:	
Fac ID: N/A		Fac. Type:		Specialist: KELLY DEAN		
Procedure Review						
	Rec'd	Rel'd	Full Name	Comments		
Lead:	11/07/2014					
QA:			7/19/16  6/2 BD	13 Apr 2016		
Liaison:						
Procedure Comments:			ENROUTE-NON			
			Remark Type: INFORMATION			
P-NOTAM						
POC FOR THIS ACTION IS ADOLFO URRUTIA OR JULIE MORGAN, 405-954-8830.						

[Print](#)

Project Name: KTOI NDB RWY 7 P-NOTAM TO CHANGE THRE TO TDZE

Project Reason: CHANGE THRE (381) TO TDZE (389). CORRECT HAT VALUE TO 531 AFTER APPLYING TDZE.

Last Updated By: KELLY DEAN

Last Updated At: 2016-03-30 13:37:07.879944

Status: Verified

6/5678 3/10/16

!FDC ~~XXXXX~~ TOI IAP TROY MUNI AIRPORT AT N KENNETH CAMPBELL FIELD, TROY, AL. NDB RWY 7, AMDT 12... S-7 HAT 531 ALL CATS. DELETE THRE 381. CHART TDZE 389. THIS IS NDB RWY 7, AMDT 12A. 1603301337-PERM



TROY, ALABAMA

AL-5720 (FAA)

16035

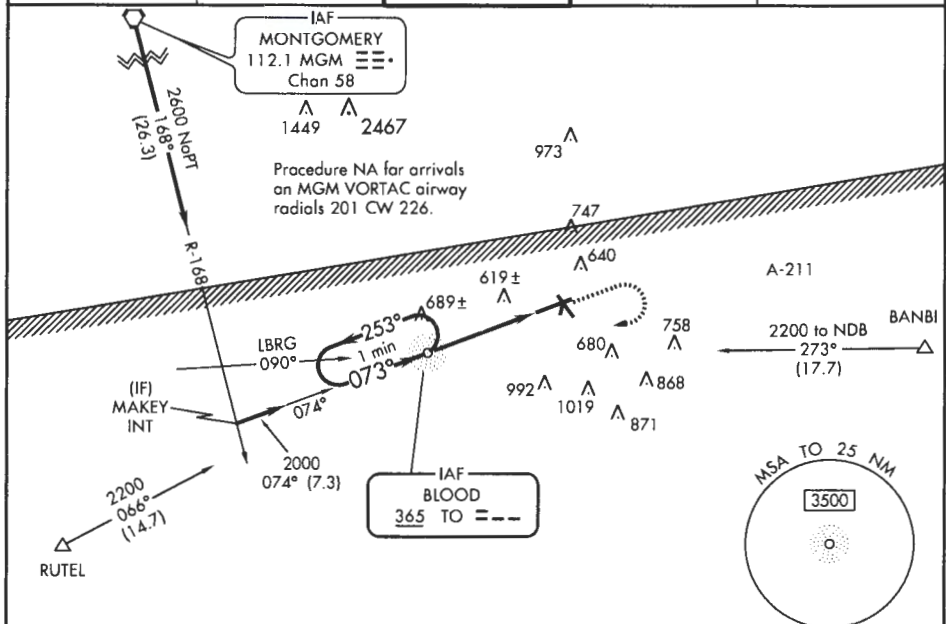
NDB TO	APP CRS	Rwy Idg	6197
365	073°	THRE	381
		Apt Elev	397

NDB RWY 7
TROY MUNI AIRPORT AT N KENNETH CAMPBELL FIELD (TOI)

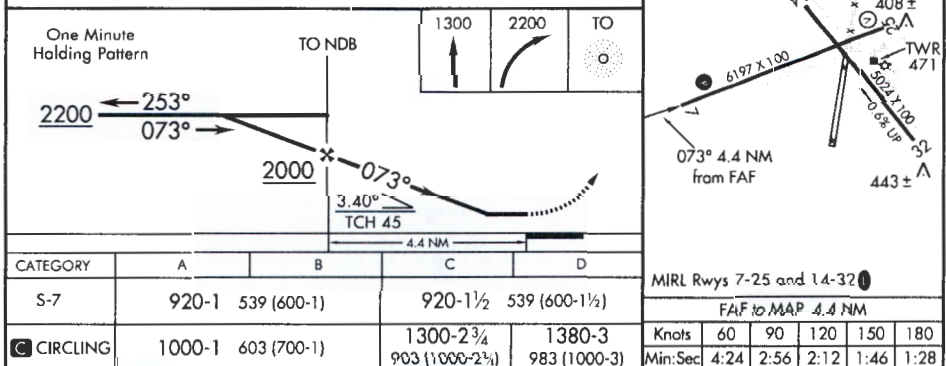
When local altimeter setting not received, use Montgomery Rgnl (Donnelly Field) altimeter setting and increase all MDA 100 feet, increase S-7 visibility. Cat C and D and Circling Cat C ½ mile. Circling to Rwy 14, 32 NA at night.
MISSED APPROACH: Climb to 1300 then climbing right turn to 2200 direct BLOOD NDB and hold.

ATIS	CAIRNS APP CON *	TROY TOWER *	GND CON	UNICOM
120.925	121.1 319.25	124.3 306.9	121.9 263.125	122.8 (CTAF) ①

SE-4, 03 MAR 2016 to 31 MAR 2016



SE-4, 03 MAR 2016 to 31 MAR 2016



TROY, ALABAMA
Amdt 12 29MAY14

TROY MUNI AIRPORT AT N KENNETH CAMPBELL FIELD (TOI)
31°52'N-86°01'W

NDB RWY 7