

<b>Flight Procedure Tracking Form</b>			<b>Action:</b> FLIGHT CHECK	<b>Task Type:</b> IAP	<b>Date Open:</b> 07/10/2014	<b>Task #:</b> 2014071030476501001	<b>Request #:</b> 20140710304765
<b>Procedure:</b> COPTER RNAV (GPS) 187 AMDT 1				<b>Airport ID:</b> K2MI2	<b>Airport:</b> ST MARY MERCY HOSPITAL		<b>Reimbursable #:</b>
<b>City:</b> LIVONIA			<b>ST:</b> MI	<b>GPS #:</b>		<b>Estimated Chart Date:</b> 12/10/2015	<b>FICO #:</b>
<b>Fac ID:</b> RNAV		<b>Fac. Type:</b>			<b>Specialist:</b> HERMAN ROGERS		
<b>Procedure Review</b>							
	<b>Rec'd</b>	<b>Rel'd</b>	<b>Full Name</b>	<b>Comments</b>			
<b>Lead:</b>							
<b>QA:</b>							
<b>Liaison:</b>							
<b>Procedure Comments:</b>				<b>Remark Type:</b> INFORMATION			
ENROUTE-NON							
CONTACT INFO: ALAN WILL, JACOB POWERS AJV-3420 LEADS, 405.954.6103/8702							
THIS CANCELS FDC# 5/9840							

LIVONIA, MICHIGAN

AL-SPECIAL (FAA)

FIG

APP CRS	Rwy Idg	<b>42</b>
<b>187°</b>	TDZE	<b>NA</b>
	Apt Elev	<b>739</b>

**COPTER RNAV (GPS) 187°**

ST MARY MERCY HOSPITAL (2MI2)



Use of St Mary Mercy Hospital heliport requires permission of the owner;  
use of this procedure requires specific authorization by FAA flight standards.  
Use Detroit Metro Wayne County altimeter setting.

MISSED APPROACH: Climbing left turn  
to 2800 direct ZIZKO and hold.

**SPECIFICATION ONLY - NOT FOR COCKPIT USE.**

Limit initial and intermediate approach to 90K.

**PROTOTYPE -  
NOT FOR  
NAVIGATION**

Proceed VFR from YUMVY or conduct  
the specified missed approach.

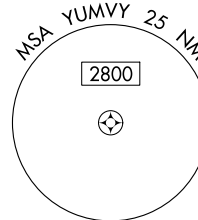
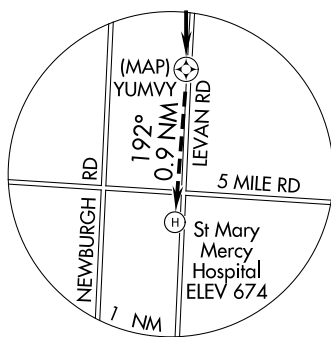
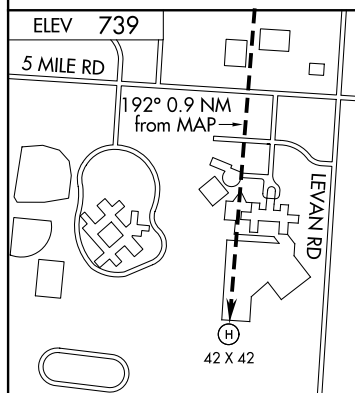
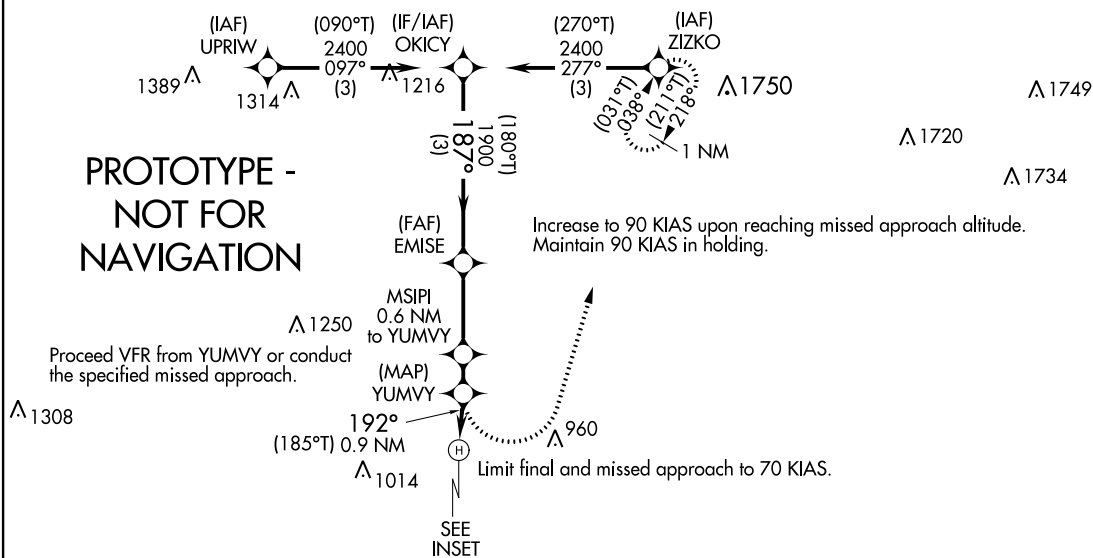
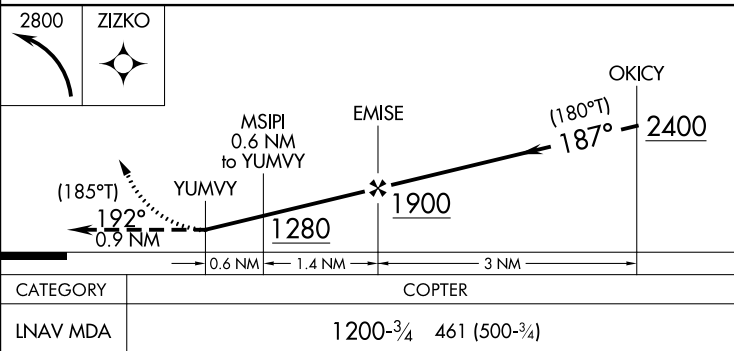


Chart scale: 1:250,000



**AUTOMATED AL-SPECIAL COPTER RNAV (GPS) 187°**

EC-1  
8/26/2015  
COMPILER: LS  
REVIEWER:  
DBL. CHKR:  
EFF: FIG  
SECT: DETROIT

LIVONIA, MICHIGAN

Orig

42°24'N-83°24'W

ST MARY MERCY HOSPITAL (2MI2)

**COPTER RNAV (GPS) 187°**

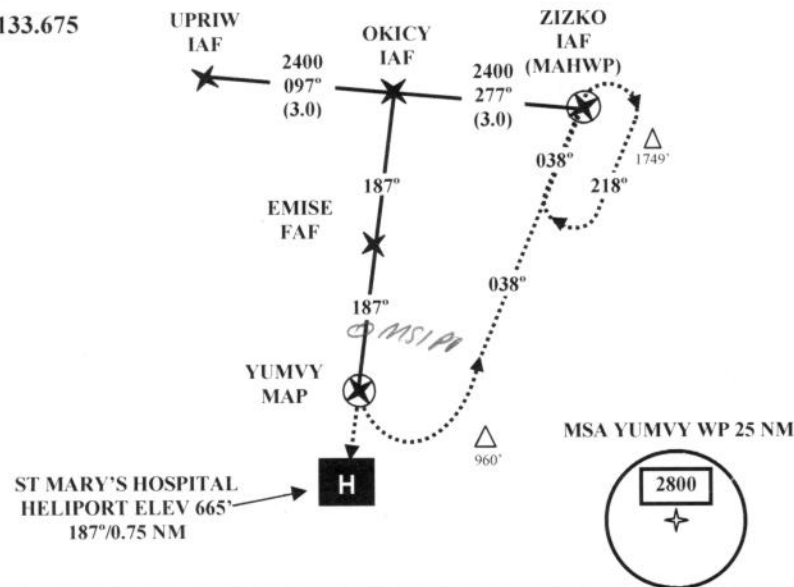
OLD

# COPTER GPS 187

St. Mary's Hospital (2MI2)  
UNIVERSITY OF MICHIGAN - SURVIVAL FLIGHT  
LIVONIA, MICHIGAN  
21 JUN 99

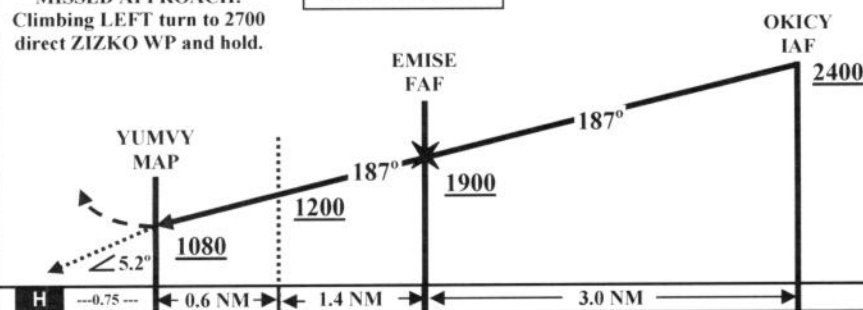
DETROIT APP  
124.05  
ATIS 133.675

NOTE: CHART NOT TO SCALE



MISSED APPROACH:  
Climbing LEFT turn to 2700  
direct ZIZKO WP and hold.

HAS ELEV: 364'



CATEGORY	COPTER
H-187	1080 - 7/8 415 (500 - 7/8)

SPECIAL AIRCREW CERTIFICATION REQUIRED.  
ARM APPROACH MODE 30NM PRIOR TO YUMVY WP.  
LIMIT FINAL AND MISSED APPROACH MAXIMUM AIRSPEED TO 70 KIAS.  
LIMIT HOLDING MAXIMUM AIRSPEED TO 70 KIAS.  
USE DETROIT/WAYNE INTERNATIONAL ALTIMETER SETTING.  
POINT IN SPACE - FROM YUMVY WP PROCEED 'VISUALLY' TO LANDING AREA OR CONDUCT THE SPECIFIED MISSED APPROACH PROCEDURE.

A N/A

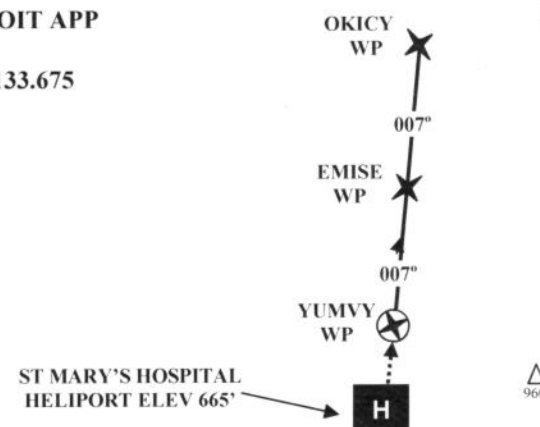
This Approach Procedure Developed and Charted by © Satellite Technology Implementation (STI), LLC. All Rights Reserved

# COPTER GPS 007 DEPARTURE (PILOT NAV)

St. Mary's Hospital  
UNIVERSITY OF MICHIGAN - SURVIVAL FLIGHT  
LIVONIA, MICHIGAN  
21 JUN 99

DETROIT APP  
124.05  
ATIS 133.675

NOTE: CHART NOT  
TO SCALE

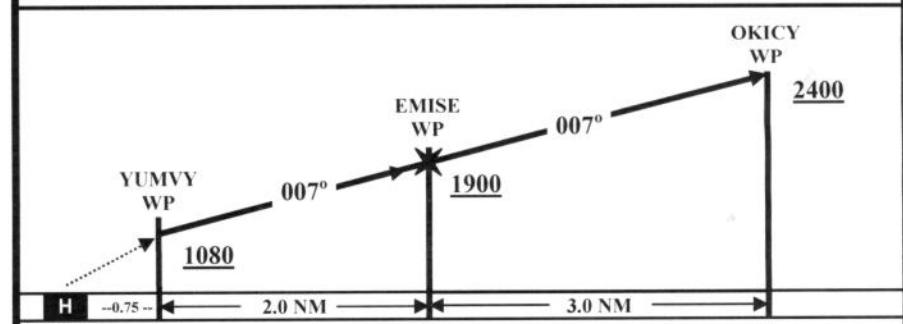


## DEPARTURE ROUTE DESCRIPTION

**Visual Segment:** Proceed Visually. Track course 007°. Climb to cross YUMVY WP at or above 1080' prior to entering IMC.

**IFR Segment:** Track course 007°. Climb at minimum 410 ft/NM to cross EMISE WP at or above 1900'. Track course 007°. Climb at minimum 167 ft/NM to cross OKICY WP at or above 2400'.

\* Copter GPS 007 Departure NOT Authorized with less than 500' ceiling and 7/8 mile visibility.  
\* Pilot MUST enter route and manually select 0.3 NM CDI sensitivity prior to departure.

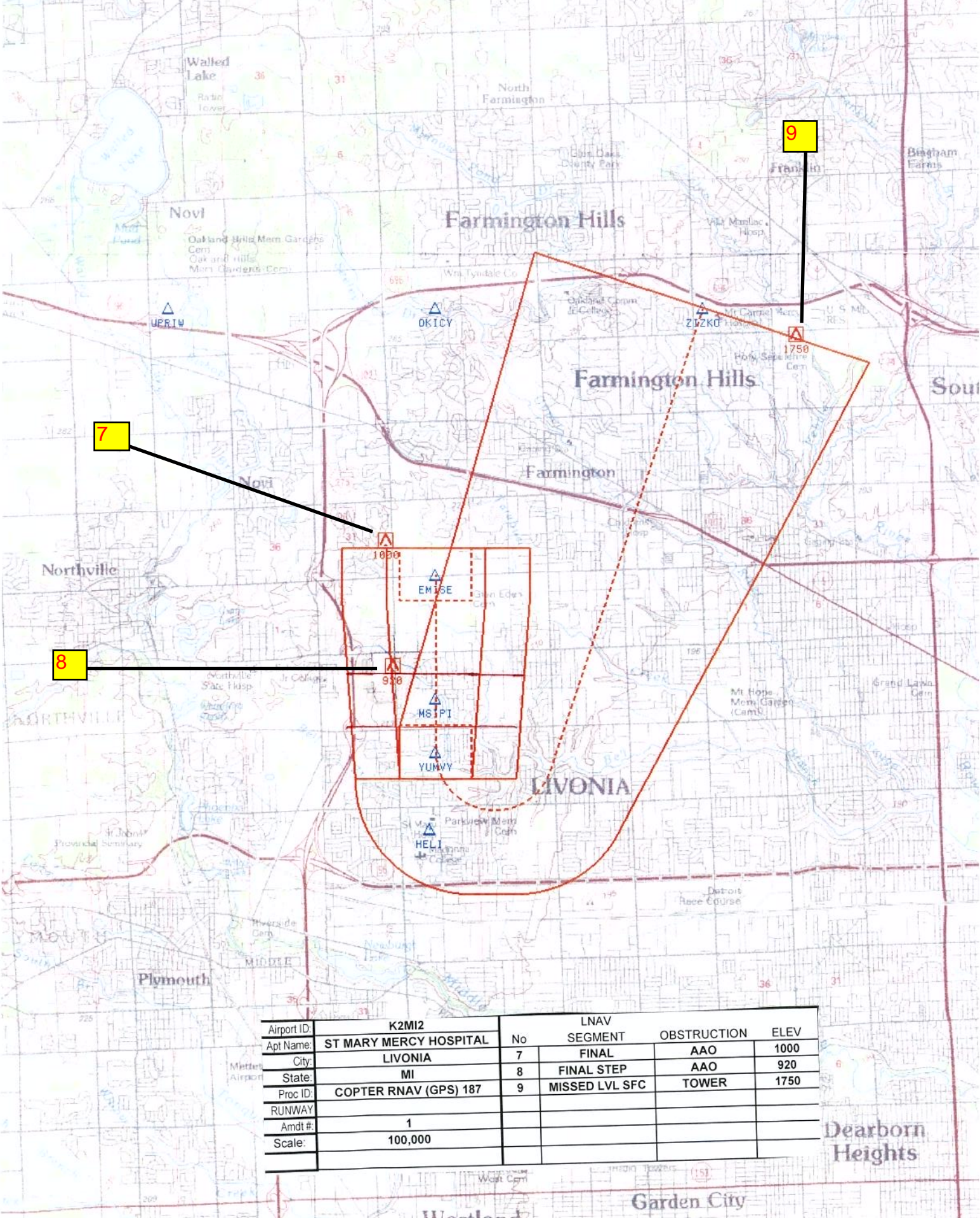


## CLIMB TABLE (ft per min.)

Fl. per NM	Ground Speed Knots			
	60	70	80	90
300	300	350	400	450
350	350	400	467	525
400	400	467	533	600
450	450	525	600	675
500	500	580	667	750
550	550	640	733	825
600	600	700	800	900
650	650	760	867	975
700	700	820	933	1050

This Departure Procedure Developed and Charted by © Satellite Technology Implementation (STI), LLC. All Rights Reserved

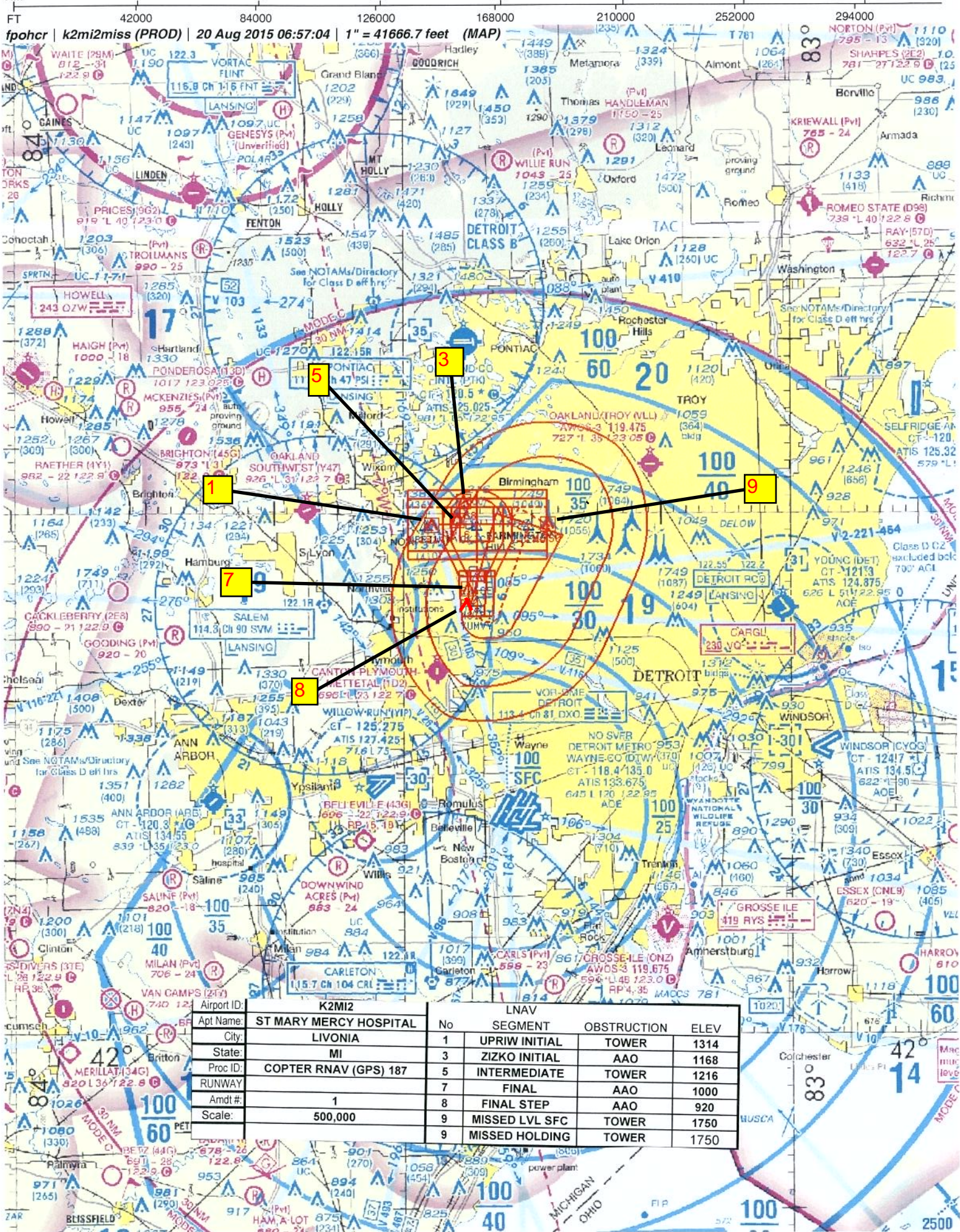




Airport ID:	K2MI2	LNAV			
Apt Name:	ST MARY MERCY HOSPITAL	No	SEGMENT	OBSTRUCTION	ELEV
City:	LIVONIA	7	FINAL	AAO	1000
State:	MI	8	FINAL STEP	AAO	920
Proc ID:	COPTER RNAV (GPS) 187	9	MISSED LVL SFC	TOWER	1750
RUNWAY					
Amdt #:	1				
Scale:	100,000				



*fpohcr | k2mi2miss (PROD) | 20 Aug 2015 06:57:04 | 1" = 41666.7 feet (MAP)*

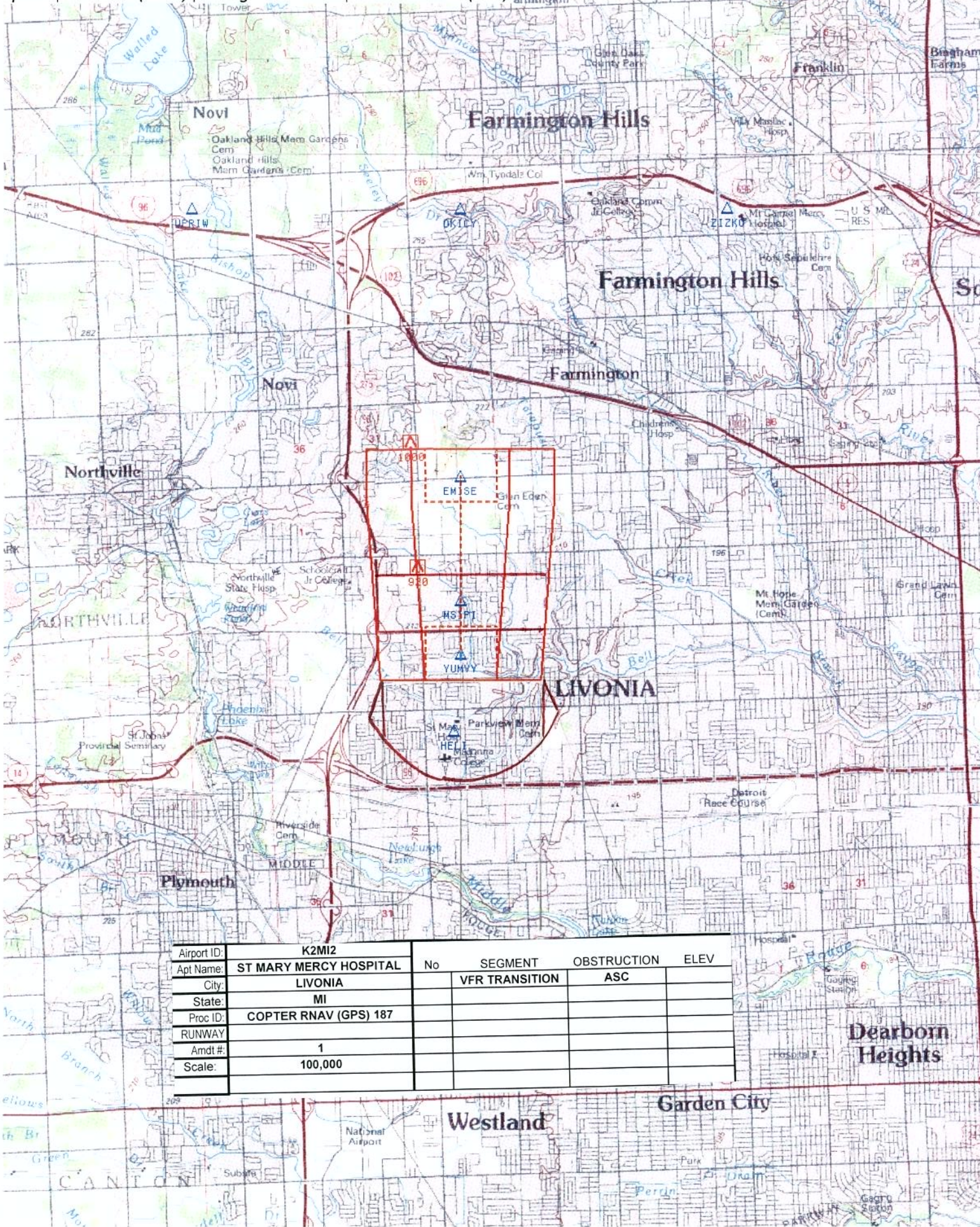


Airport ID:	K2MI2	LNAV			
Apt Name:	ST MARY MERCY HOSPITAL	No	SEGMENT	OBSTRUCTION	ELEV
City:	LIVONIA	1	UPRIW INITIAL	TOWER	1314
State:	MI	3	ZIZKO INITIAL	AAO	1168
Proc ID:	COPTER RNAV (GPS) 187	5	INTERMEDIATE	TOWER	1216
RUNWAY		7	FINAL	AAO	1000
Amdt #:	1	8	FINAL STEP	AAO	920
Scale:	500,000	9	MISSED LVL SFC	TOWER	1750
		9	MISSED HOLDING	TOWER	1750



NM 1 2 3 4 5 6 7 8 9 10  
FT 8000 16000 24000 32000 40000 48000 56000 64000

fpohcr | k2mi2miss (PROD) | 21 Aug 2015 11:47:34 | 1" = 8333.3 feet (MAP)



Airport ID:	K2MI2	No	SEGMENT	OBSTRUCTION	ELEV
Apt Name:	ST MARY MERCY HOSPITAL		VFR TRANSITION	ASC	
City:	LIVONIA				
State:	MI				
Proc ID:	COPTER RNAV (GPS) 187				
RUNWAY					
Amdt #:	1				
Scale:	100,000				





# Federal Aviation Administration

---

## Memorandum

Date: 8/25/2015

To: FILE

*Digitally signed by*

**JACOB POWERS**

Aug 26, 2015

From: George Gonzalez, Manager, Instrument Flight Procedures Team 2, AJV-5420

Subject: ACTION: Documentation of a Categorical Exclusion Under Order 1050.1

---

- A. Proposed Action: Established a special instrument approach procedure (IAP) titled COPTER RNAV (GPS) 187, St. Mary's Mercy Hospital (K2MI2), Livonia, MI.
- B. This action qualifies for consideration as a categorically excluded action as it falls under the following specific categorical exclusion provision: Publishing of Instrument Procedures conducted over noise sensitive areas; modifications to currently approved instrument procedures conducted below 3,000 feet AGL that do not increase minimum altitudes and landing minima.
- C. Other supporting information:  
ASO-220 Memorandum dated April 5, 1989  
AFS-1 Memorandum dated September 21, 1994  
AVN-100 Memorandum dated July 23, 1996
- D. Review and analysis by the FAA does not indicate that any extraordinary circumstances listed in Order 1050.1 or other reasons exist that would cause undersigned to believe that the proposed action might have the potential for causing significant environmental impacts upon its implementation. The proposed action does not individually or cumulatively have a significant effort on the human environment and, therefore, is determined to be categorically excluded from further environmental documentation according to Order 1050.1.

Date: 9/05/2014

Cc: AJV-5rf, AJV-5420