
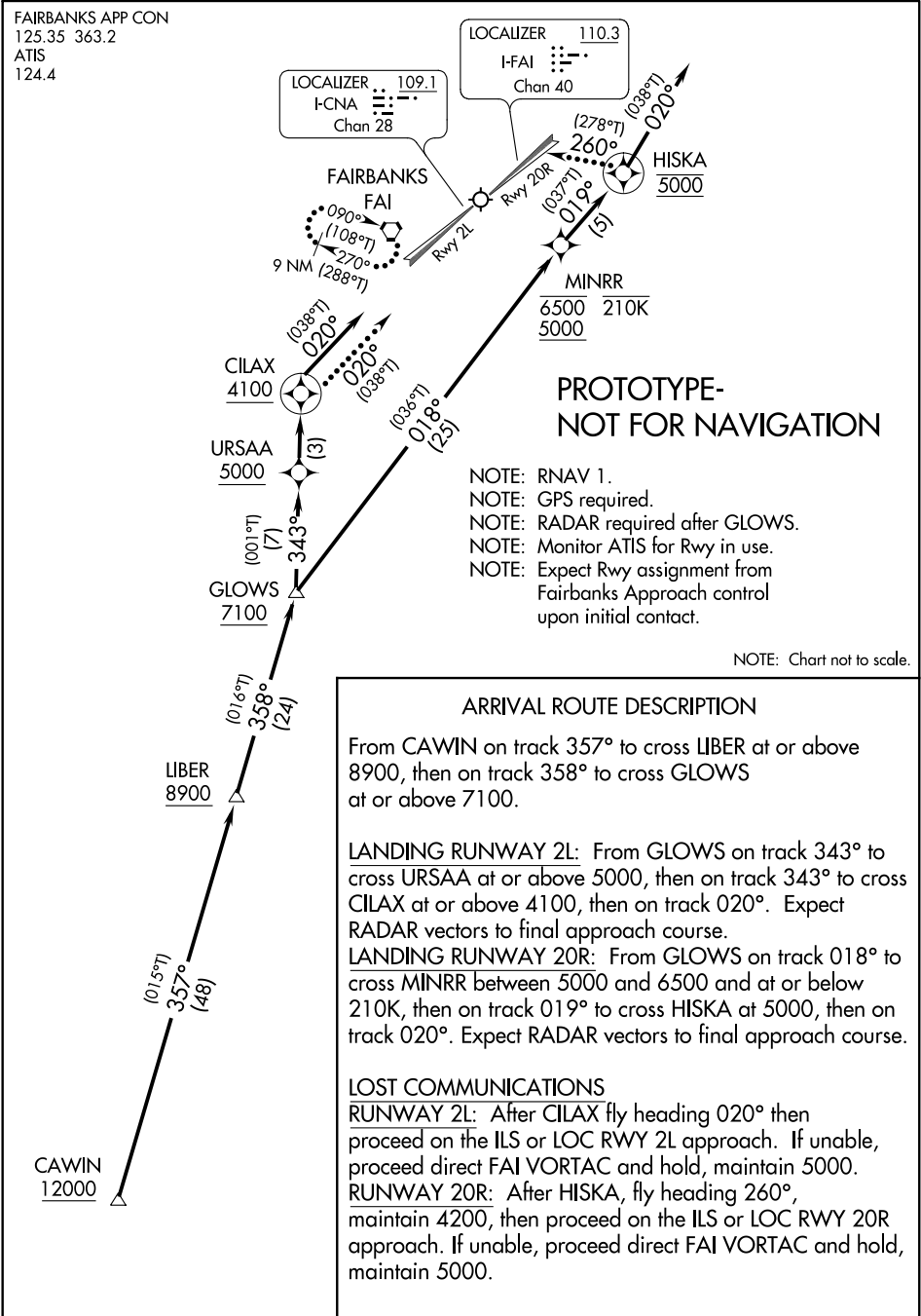


Flight Procedure Tracking Form		Action: FLIGHT CHECK	Task Type: STAR	Date Open: 07/08/2016	Task #: 2014071025450109001	Request #: 20140710254501
Procedure: STAR LIBER (RNAV) THREE FAIRBANKS AK PAFA			Airport ID: PAFA	Airport: FAIRBANKS INTL	Reimbursable #: NO	
City: FAIRBANKS	ST: AK	GPS #:	Estimated Chart Date: 06/22/2017		FICO #:	
Fac ID: N/A		Fac. Type:		Specialist: DAVID DOWLING		
Procedure Review						
	Rec'd	Rel'd	Full Name	Comments		
Lead:	10/14/2016					
QA:						
Liaison:						
Procedure Comments:			ENROUTE	Remark Type: INFORMATION		
<p>REQUEST TABLE-TOP; CHANGE IN ARRIVAL DESCRIPTION ADDS HIGHER CROSSING RESTRICTIONS; CHANGE IN RUNWAY 2L LOST COMM TRACK IS CURRENTLY FC SAT ON THE ILS OR LOC RWY 02L IAP.</p> <p>TO CLEAR FDC NOTAMS: 6/1241 AND 6/2979.</p> <p>CONTACT ROBERT HAMILTON, SUB-TEAM MANAGER, AJV-5422, (405) 954-4608.</p>						



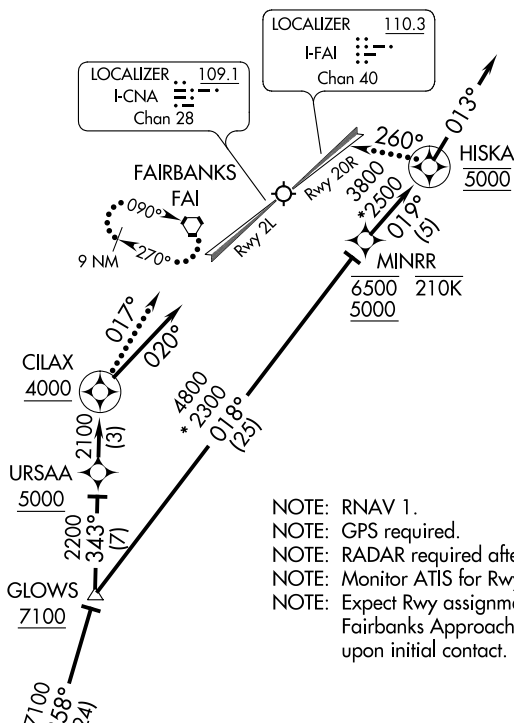
LIBER TWO ARRIVAL (RNAV)

OLD

FAIRBANKS INTL (FAI) (PAFA)
FAIRBANKS, ALASKA

ST-1234 (FAA)

FAIRBANKS APP CON
125.35 363.2
ATIS
124.4



NOTE: Chart not to scale.

ARRIVAL ROUTE DESCRIPTION

From CAWIN on track 357° to LIBER, then on track 358° to cross GLOWS at or above 7100.

LANDING RUNWAY 2L: From GLOWS on track 343° to cross URSAA at or above 5000, then on track 343° to cross CILAX at or above 4000, then on track 020°. Expect RADAR vectors to final approach course.

LANDING RUNWAY 20R: From GLOWS on track 018° to cross MINRR between 5000 and 6500 and at or below 210K, then on track 019° to cross HISKA at 5000, then on track 013°. Expect RADAR vectors to final approach course.

LOST COMMUNICATIONS

RUNWAY 2L: After CILAX fly heading 017° to join Rwy 2L localizer, cleared ILS or LOC RWY 2L. If unable, proceed direct FAI VORTAC and hold, maintain 5000.

RUNWAY 20R: After HISKA, fly heading 260°, maintain 4200, intercept and execute the ILS or LOC RWY 20R approach. If unable, proceed direct to FAI VORTAC and hold, maintain 5000.

CAWIN
12000

LIBER TWO ARRIVAL (RNAV)

(CAWIN.LIBER2) 15344

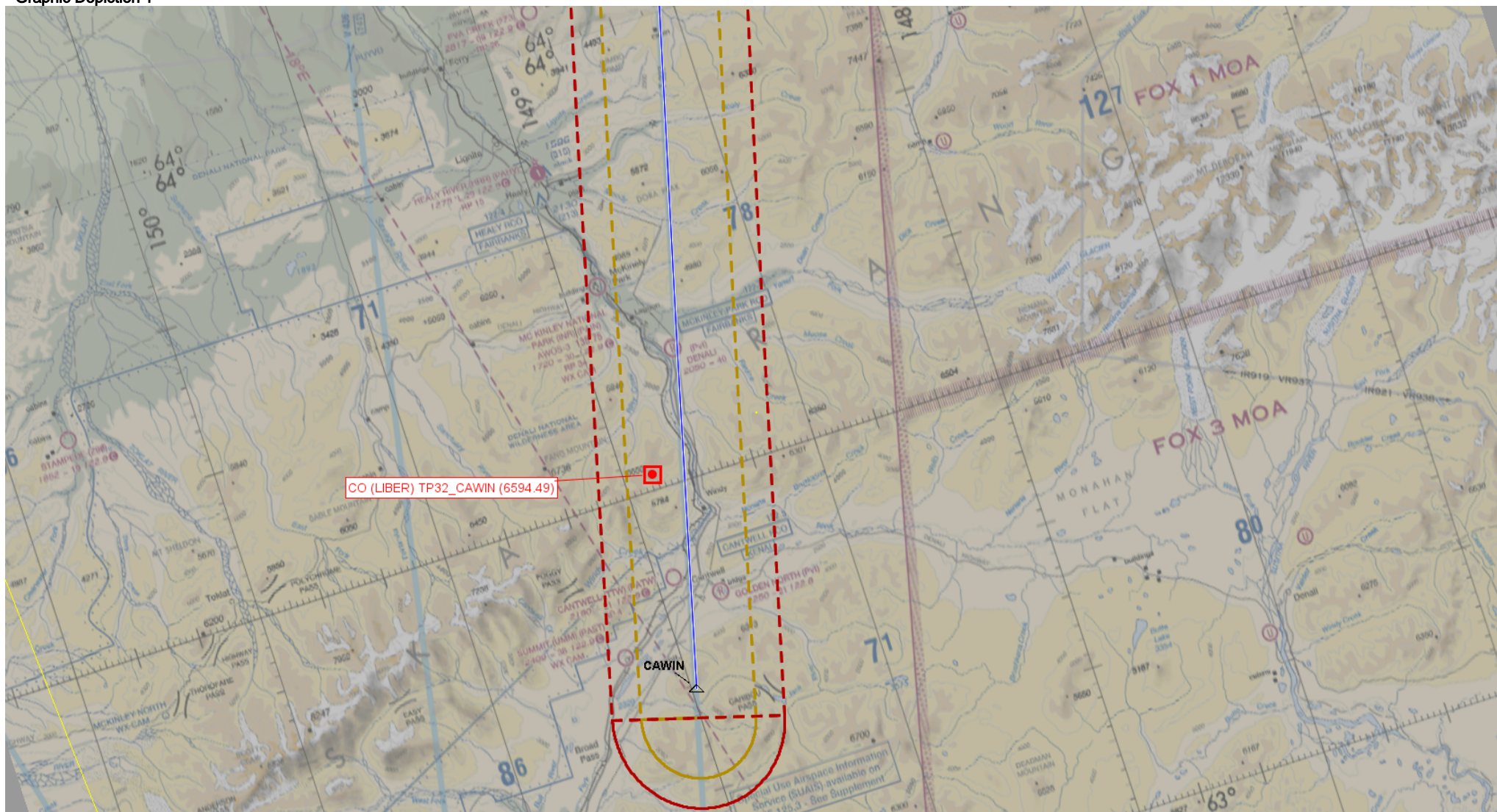
FAIRBANKS, ALASKA
FAIRBANKS INTL (FAI) (PAFA)

FAIRBANKS, ALASKA

FEDERAL AVIATION ADMINISTRATION
FLIGHT STANDARDS SERVICE
STANDARD TERMINAL ARRIVAL (STAR)

Bearings, headings, courses, tracks and radials are magnetic. Elevations and altitudes are in feet, MSL. Altitudes are minimum altitudes unless otherwise indicated. Distances are in nautical miles (NM). Graphic depictions attached.

Arrival Name	Number	STAR Computer Code	Superseded Number	Dated	Effective Date
LIBER (RNAV)	THREE	CAWIN.LIBER3	TWO	12/10/2015	
Graphic Depiction 1					



Bearings, headings, courses, tracks and radials are magnetic. Elevations and altitudes are in feet, MSL. Altitudes are minimum altitudes unless otherwise indicated. Distances are in nautical miles (NM). Graphic depictions attached.

The map displays the Fairbanks, Alaska region with various flight paths and airports. Key features include:

- Airports:** CILAX, URSAA, GLOWS, and LIBER are marked with red squares and labeled.
- Flight Paths:** Several paths are shown with callouts:
 - CO (CILAX) TP1_CAWIN (508.53)
 - CO (MINRR) TP18_CAWIN (1023.62)
 - CO (URSAA) TP0_CAWIN (931.76)
 - CO (GLOWS) TP16_CAWIN (4806.43)
- Geographical Features:** Rivers like the Chena River and Tanana River, and lakes like Clear Lake and Eielson Lake are shown.
- Flight Information:** Altitudes, headings, and other flight data are provided for various paths.

FEDERAL AVIATION ADMINISTRATION
FLIGHT STANDARDS SERVICE
STANDARD TERMINAL ARRIVAL (STAR)

Bearings, headings, courses, tracks and radials are magnetic. Elevations and altitudes are in feet, MSL. Altitudes are minimum altitudes unless otherwise indicated. Distances are in nautical miles (NM). Graphic depictions attached.

Arrival Name	Number	STAR Computer Code	Superseded Number	Dated	Effective Date
LIBER (RNAV)	THREE	CAWIN.LIBER3	TWO	12/10/2015	
Graphic Depiction 3					

