

Flight Procedure Tracking Form		Action: FLIGHT CHECK	Task Type: IAP	Date Open: 09/01/2017	Task #: 2014070834404001060	Request #: 20140708344040
Procedure: RNAV (GPS) RWY 10 AMDT 1C			Airport ID: KCLL	Airport: EASTERWOOD FIELD	Reimbursable #: NO	
City: COLLEGE STATION	ST: TX	GPS #:	Estimated Chart Date: 02/01/2018		FICO #: 1200294	
Fac ID: N/A		Fac. Type:		Specialist: HERMAN ROGERS		
Procedure Review						
	Rec'd	Rel'd	Full Name	Comments		
Lead:	09/05/2014	12/11/2017	DAVID DANNER	QUALITY		
QA:	11/15/2017	11/21/2017	ANDI LAU	26		
Liaison:	11/21/2017	11/22/2017	MARY MCDONALD	CHECKED		
Procedure Comments:			Remark Type: INFORMATION			
<p>MAGVAR UPDATE</p> <p>PENDING DATA USED: KCLL ASSIGNED MAGVAR: OLD 6E/1985-NEW 3E/2020</p> <p>CONTACT: PAT MULQUEEN/JACOB POWERS. AJV-543 405.954.4073/8702.</p> <p>12/13/2017: THIS IS A CORRECTED COPY OF THE FORM APPROVED ON 12/08/2017. 1. CHANGED NOTE FROM "RWY 10 HELICOPTER VISIBILITY BELOW 3/4 SM NOT AUTHORIZED" TO "RWY 10 HELICOPTER VISIBILITY REDUCTION BELOW 3/4 SM NOT AUTHORIZED".</p>						

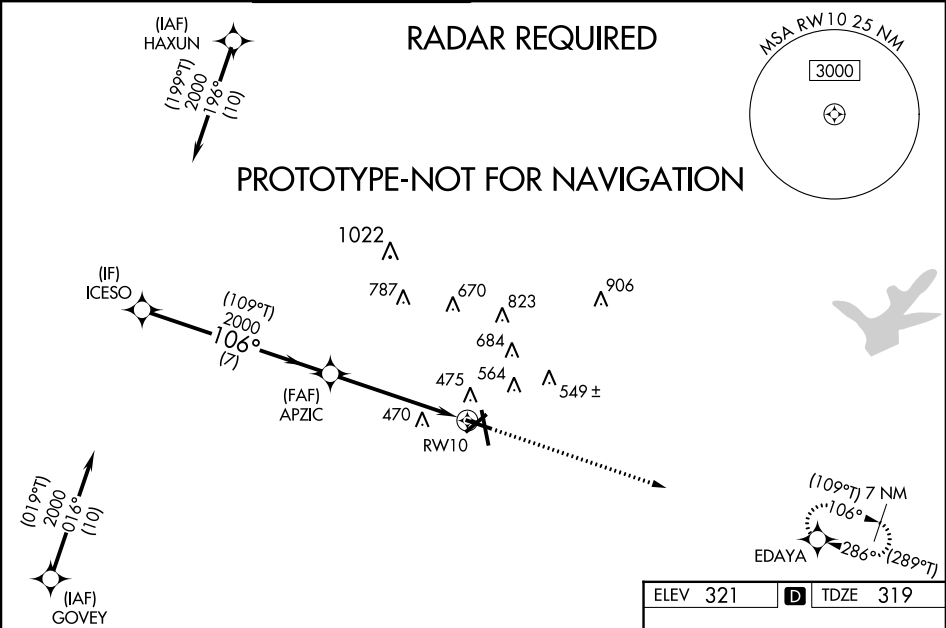
WAAS CH 65632 W10A	APP CRS 106°	Rwy Idg TDZE Apt Elev	5159 319 321
--	------------------------	-----------------------------	---

RNAV (GPS) RWY 10
EASTERWOOD FIELD (CLL)

⚠ For uncompensated Baro-VNAV systems, LNAV/VNAV NA below -3°C (27°F) or above 54°C (130°F). DME/DME RNP-0.3 NA.

MISSED APPROACH:
Climb to 3000 direct
EDAYA and hold.

ATIS 126.85	HOUSTON APP CON 134.3 360.85	EASTERWOOD TOWER* 118.5 (CTAF) 0 284.7	GND CON 128.7 284.7	CLNC DEL 128.7	HOUSTON CLNC DEL (When ATCT closed.) 120.4	UNICOM 122.95
-----------------------	--	--	-------------------------------	--------------------------	---	-------------------------



ELEV 321		D TDZE 319	
ICSO		APZIC	
2000		2000	
(109°T)		106°	
GP 3.00°		*1.2 NM to RW10	
TCH 50		RW10	
7 NM		3.9 NM	
CATEGORY		A B C D E	
LPV DA		569-3/4 250 (300-3/4)	
LNAV/VNAV DA		641-1 322 (400-1)	
LNAV MDA		740-1 421 (500-1) 740-1 1/4 421 (500-1 1/4)	
CIRCLING		860-1 880-1 1000-2 1180-2 3/4 1180-3 539 (600-1) 559 (600-1) 679 (700-2) 859 (900-2 3/4) 859 (900-3)	

RNAV (GPS) RWY 10

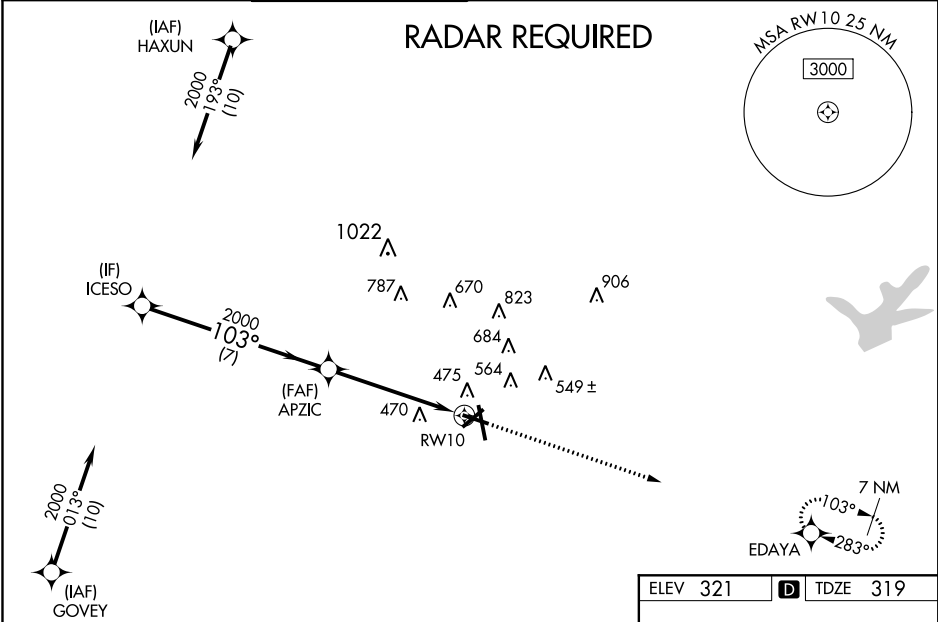
WAAS CH 65632 W10A	APP CRS 103°	Rwy Idg TDZE Apt Elev	5158 319 321
--	------------------------	-----------------------------	---

RNAV (GPS) RWY 10
EASTERWOOD FIELD (CLL)

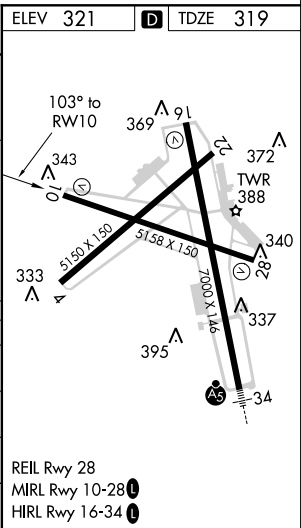
⚠ Baro-VNAV NA when using Caldwell altimeter setting. For uncompensated Baro-VNAV systems, LNAV/VNAV NA below -15°C (5°F) or above 41°C (105°F). When local altimeter setting not received, use Caldwell altimeter setting and increase all DA 52 feet and all MDA 60 feet; increase LPV and LNAV/VNAV visibility ¼ mile all Cats, LNAV Cat C/D/E visibility ⅜ mile and Circling Cat C visibility ¼ mile. DME/DME RNP-0.3 NA. Helicopter visibility reduction below ⅜ SM NA. VDP NA with Caldwell altimeter setting. Night Landing Rwy 28 NA.

MISSED APPROACH:
Climb to 3000 direct
EDAYA and hold.

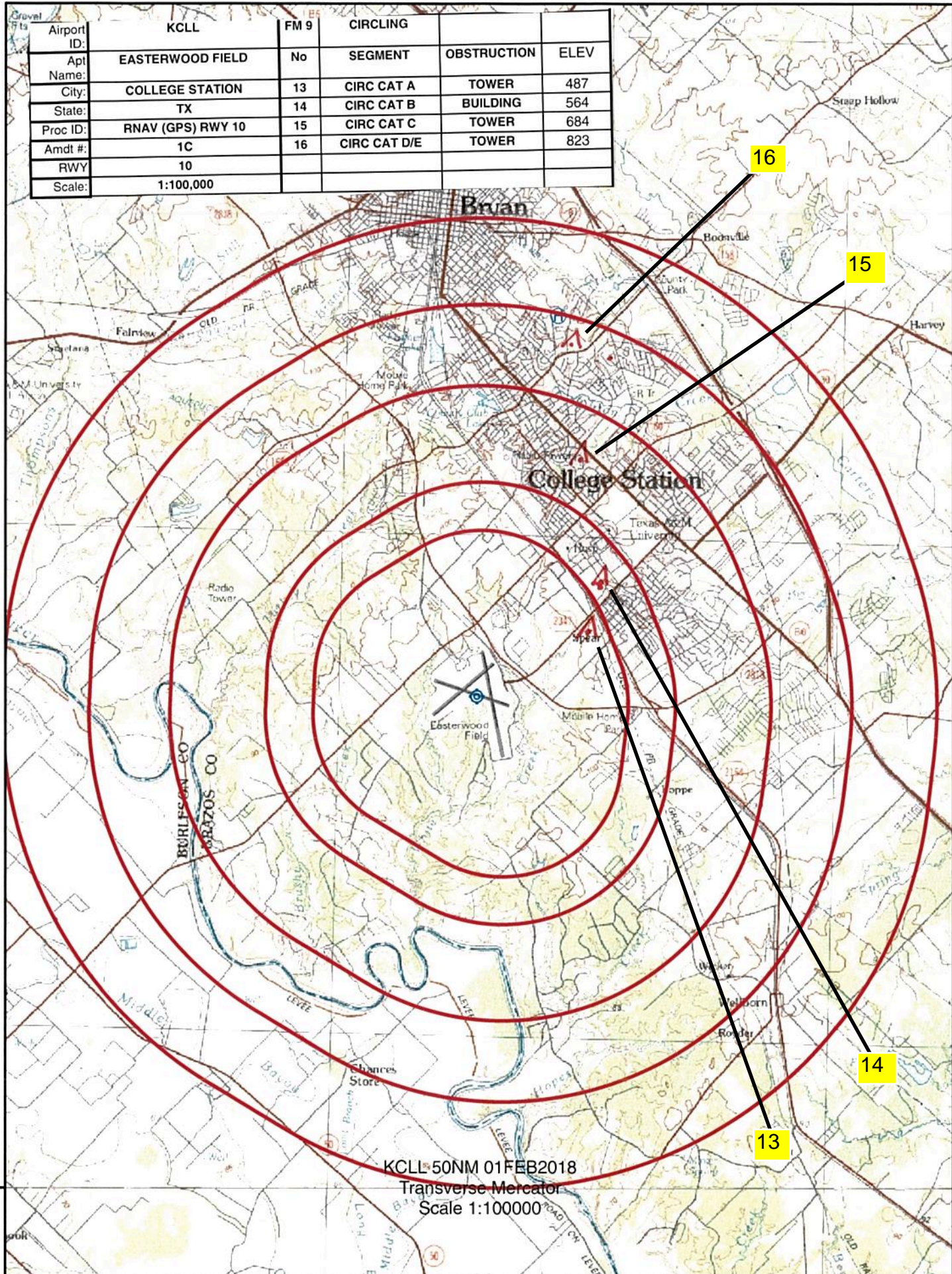
ATIS 126.85	HOUSTON APP CON 134.3 360.85	EASTERWOOD TOWER* 118.5 (CTAF) 0 284.7	GND CON 128.7 284.7	CLNC DEL 128.7	HOUSTON CLNC DEL (When ATCT closed.) 120.4	UNICOM 122.95
-----------------------	--	--	-------------------------------	--------------------------	---	-------------------------



ICSO		APZIC		3000 EDAYA	
2000		2000		*LNAV only	
GP 3.00° TCH 50		*1.2 NM to RWY 10		RWY 10	
7 NM		3.9 NM		1.2	
CATEGORY	A	B	C	D	E
LPV DA	569-¾ 250 (300-¾)				
LNAV/VNAV DA	641-1 322 (400-1)				
LNAV MDA	740-1	421 (500-1)	740-1¼	421 (500-1¼)	
CIRCLING	860-1 539 (600-1)	880-1 559 (600-1)	880-1½ 559 (600-1½)	1000-2¼ 679 (700-2¼)	1180-3 859 (900-3)

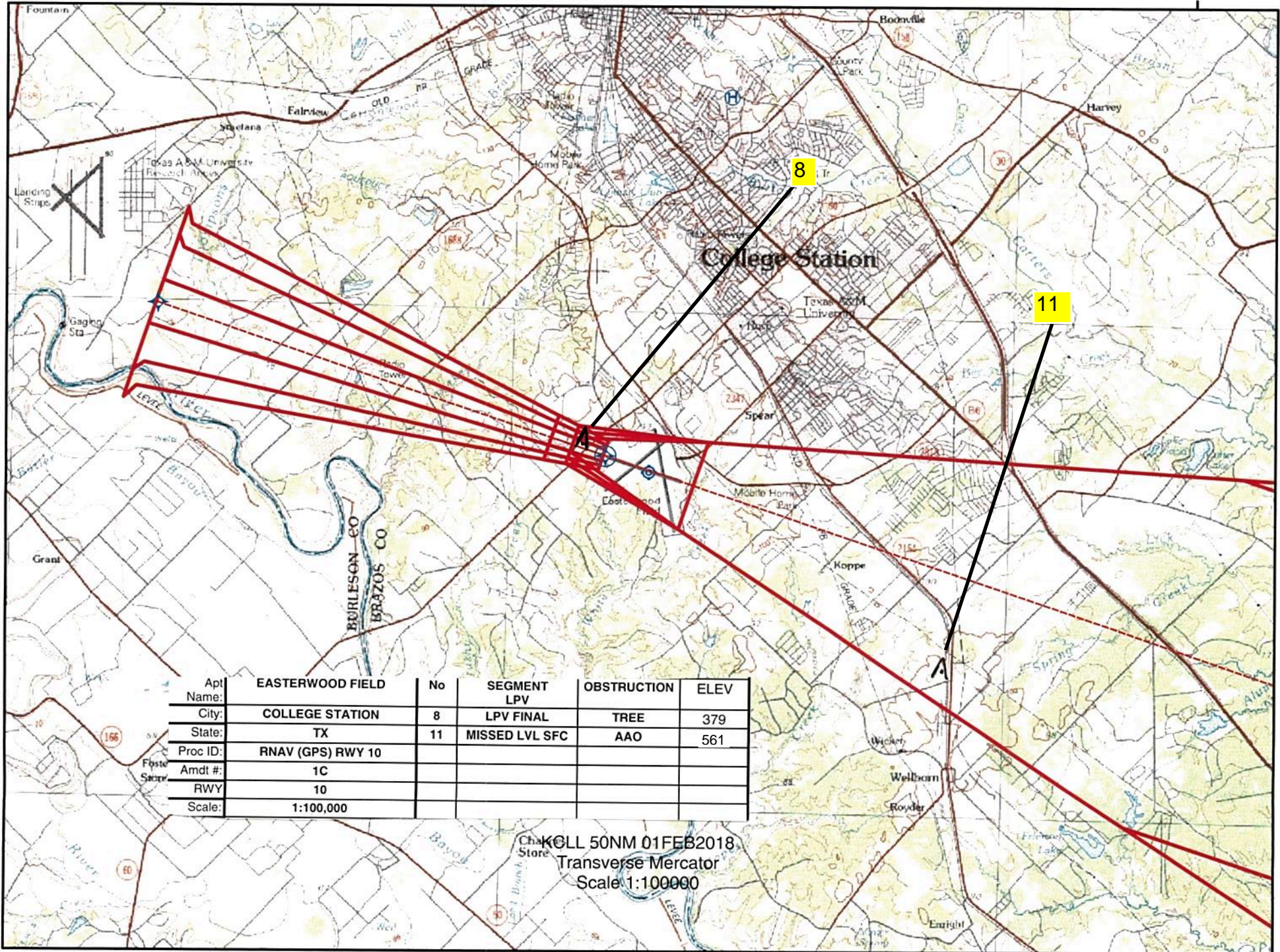


Airport ID:	KCLL	FM 9	CIRCLING		
Apt Name:	EASTERWOOD FIELD	No	SEGMENT	OBSTRUCTION	ELEV
City:	COLLEGE STATION	13	CIRC CAT A	TOWER	487
State:	TX	14	CIRC CAT B	BUILDING	564
Proc ID:	RNAV (GPS) RWY 10	15	CIRC CAT C	TOWER	684
Amdt #:	1C	16	CIRC CAT D/E	TOWER	823
RWY:	10				
Scale:	1:100,000				



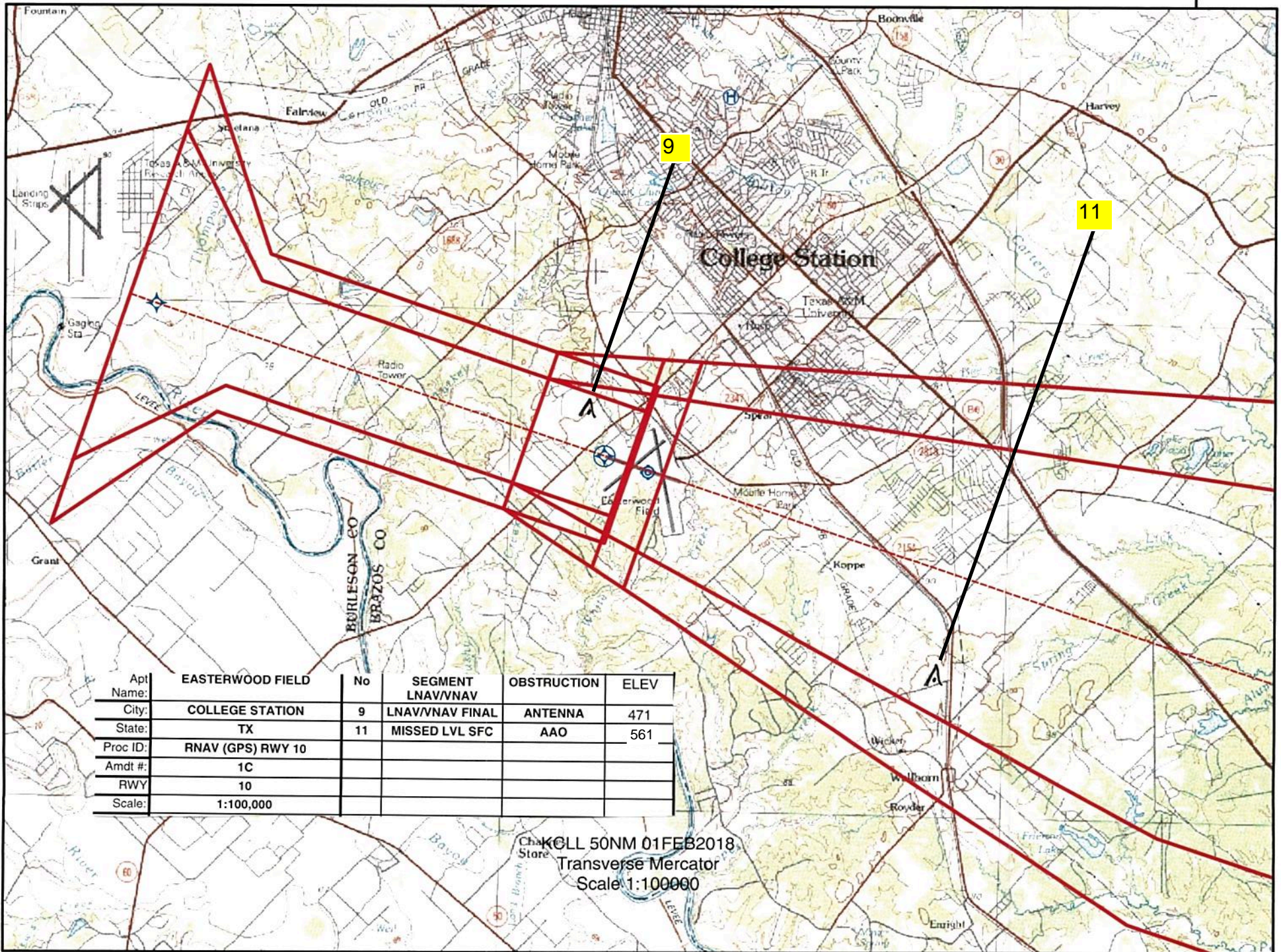
30° 30' 0" N

KCLL 50NM 01FEB2018
Transverse Mercator
Scale 1:100000



WNAV

96°15'0"W



Apt Name:	EASTERWOOD FIELD	No	SEGMENT	OBSTRUCTION	ELEV
City:	COLLEGE STATION	9	LNAV/VNAV	ANTENNA	471
State:	TX	11	LNAV/VNAV FINAL	AAO	561
Proc ID:	RNAV (GPS) RWY 10		MISSED LVL SFC		
Amdt #:	1C				
RWY	10				
Scale:	1:100,000				

KCLL 50NM 01FEB2018
Transverse Mercator
Scale 1:100000

