

Flight Procedure Tracking Form		Action: FLIGHT CHECK	Task Type: IAP	Date Open: 02/14/2017	Task #: 2014070217542803001	Request #: 20140702175428
Procedure: COPTER RNAV (GPS) 090 AMDT 0A				Airport ID: K7KY0	Airport: MURRAY CALLOWAY COUNTY HOSPITAL	Reimbursable #: NO
City: MURRAY	ST: KY	GPS #:	Estimated Chart Date: 08/17/2017		FICO #:	
Fac ID: N/A		Fac. Type:			Specialist: CHRISTINE BAYSE	
Procedure Review						
	Rec'd	Rel'd	Full Name	Comments		
Lead:	02/24/2017					
QA:			Wilson 4/29/2017			
Liaison:						
Procedure Comments:			Remark Type: INFORMATION			
<p>ABBREVIATED AMENDMENT</p> <p>CANCEL T-NOTAM FDC 7/1181 UPON PUBLICATION</p> <p>CONTACT: PAT MULQUEEN 405-954-4073 OR BEV BORDY 405-954-8293</p>						

APP CRS	Rwy Idg	N/A
090°	TDZE	N/A
	Surface Elev	574

COPTER RNAV (GPS) 090°

MURRAY CALLOWAY COUNTY HOSPITAL (7KY0)

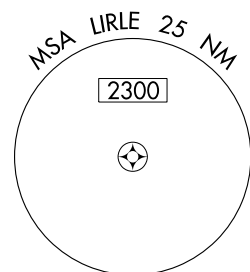
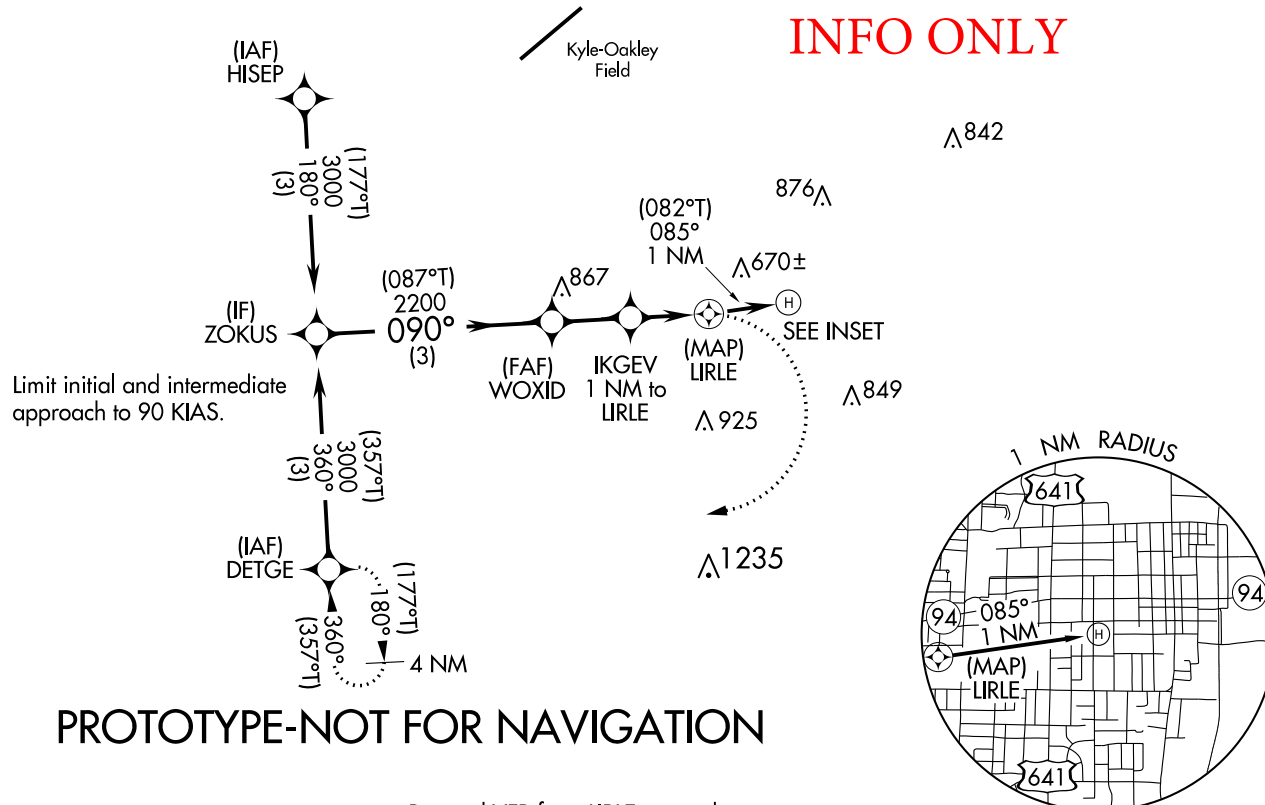
DME/DME RNP-0.3 NA. Use of Murray Calloway County Hospital requires permission of the owner; use of this procedure requires specific authorization by FAA flight standards. Use Kyle-Oakley Field altimeter setting. When not received, use Mayfield altimeter setting and increase MDA 40 feet. For night operations, contact Murray Calloway Hospital ER on 155.140 or at 270-752-1155/2111 to turn on pad lights.

MISSED APPROACH:
Climbing right turn to 3000 direct DETGE and hold.

KYLE-OAKLEY FIELD AWOS-3
119.975

MEMPHIS CENTER
133.65 292.15

MURRAY COUNTY HOSPITAL ER
155.140



Proceed VFR from LIRLE or conduct the specified missed approach.

Limit final and missed approach to 70 KIAS.

Increase to 90 KIAS upon reaching the missed approach altitude.

