

Flight Procedure Tracking Form		Action: FLIGHT CHECK	Task Type: IAP	Date Open: 06/19/2014	Task #: 2014061931053901002	Request #: 20140619310539
Procedure: RNAV (GPS) RWY 22 AMDT 2			Airport ID: KFDW	Airport: FAIRFIELD COUNTY		Reimbursable #: NO
City: WINNSBORO	ST: SC	GPS #:	Estimated Chart Date: 12/07/2017		FICO #:	
Fac ID: N/A		Fac. Type:			Specialist: BRETT CANNON	
Procedure Review						
	Rec'd	Rel'd	Full Name	Comments		
Lead:	06/12/2017	08/07/2017	BEV L BORDY	<div>QUALITY</div> <div>10</div> <div>CHECKED</div>		
QA:	08/07/2017					
Liaison:						
Procedure Comments:			Remark Type: INFORMATION			
PENDING DATA USED FOR KFDW AIRPORT AND RUNWAYS CONTACT: PATRICK MULQUEEN, (405) 954-4073 OR JACOB POWERS, (405) 954-8702						
						ARI SAVED 8/29/17

OLD

WINNSBORO, SOUTH CAROLINA

AL-6281 (FAA)

16259

WAAS CH 97330 W22A	APP CRS 225°	Rwy Idg TDZE 5003 573 Apt Elev 577
--	------------------------	--

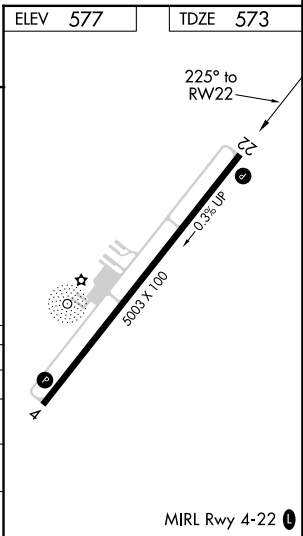
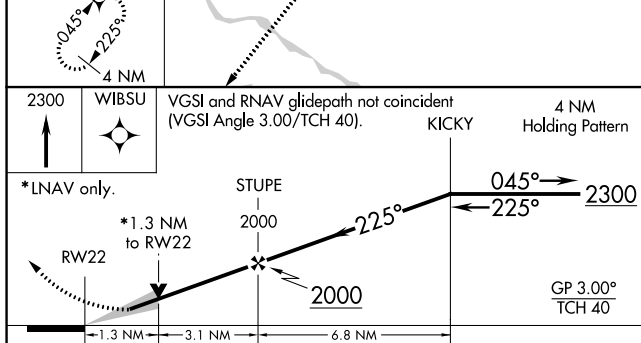
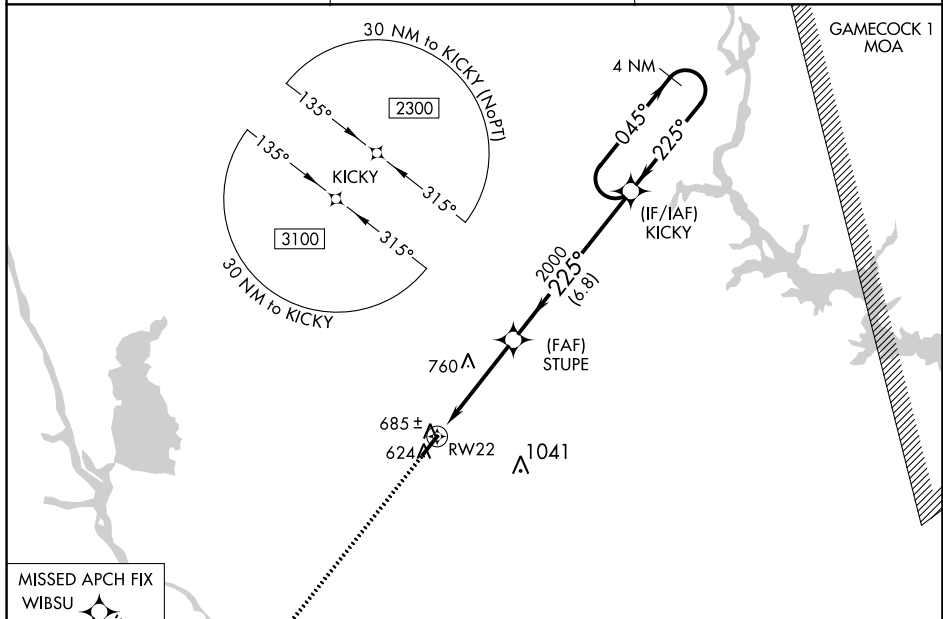
RNAV (GPS) RWY 22

FAIRFIELD COUNTY (FDW)

▼ Night landing: Rwy 4 NA. For uncompensated Baro-VNAV systems, LNAV/VNAV NA below -16°C (4°F) or above 40°C (104°F). DME/DME RNP-0.3 NA. VDP and Baro-VNAV NA when using Columbia Metropolitan altimeter setting. When local altimeter setting not received, use Columbia Metropolitan altimeter setting and increase all DA and MDA 100 feet and increase LPV all Cats visibility ¼ mile, LNAV/VNAV all Cats visibility ¾ mile, and LNAV Cats C and D visibility ¼ mile.

MISSED APPROACH:
Climb to 2300 direct
WIBSU and hold.

AWOS-3 119.075	COLUMBIA APP CON 133.4 285.6	UNICOM 123.05 (CTAF) 0
--------------------------	--	----------------------------------



CATEGORY	A	B	C	D
LPV DA		823-7/8	250 (300-7/8)	
LNAV/VNAV DA		878-1	305 (300-1)	
LNAV MDA	1000-1	427 (500-1)	1000-1 1/4	427 (500-1 1/4)
CIRCLING	1000-1 423 (500-1)	1040-1 463 (500-1)	1040-1 1/2 463 (500-1 1/2)	1140-2 563 (600-2)

WINNSBORO, SOUTH CAROLINA

Amdt 1B 20AUG15

34°19'N-81°07'W

FAIRFIELD COUNTY (FDW)

RNAV (GPS) RWY 22

SE-2, 17 AUG 2017 to 14 SEP 2017

SE-2, 17 AUG 2017 to 14 SEP 2017

WINNSBORO, SOUTH CAROLINA

AL-6281 (FAA)

FIG

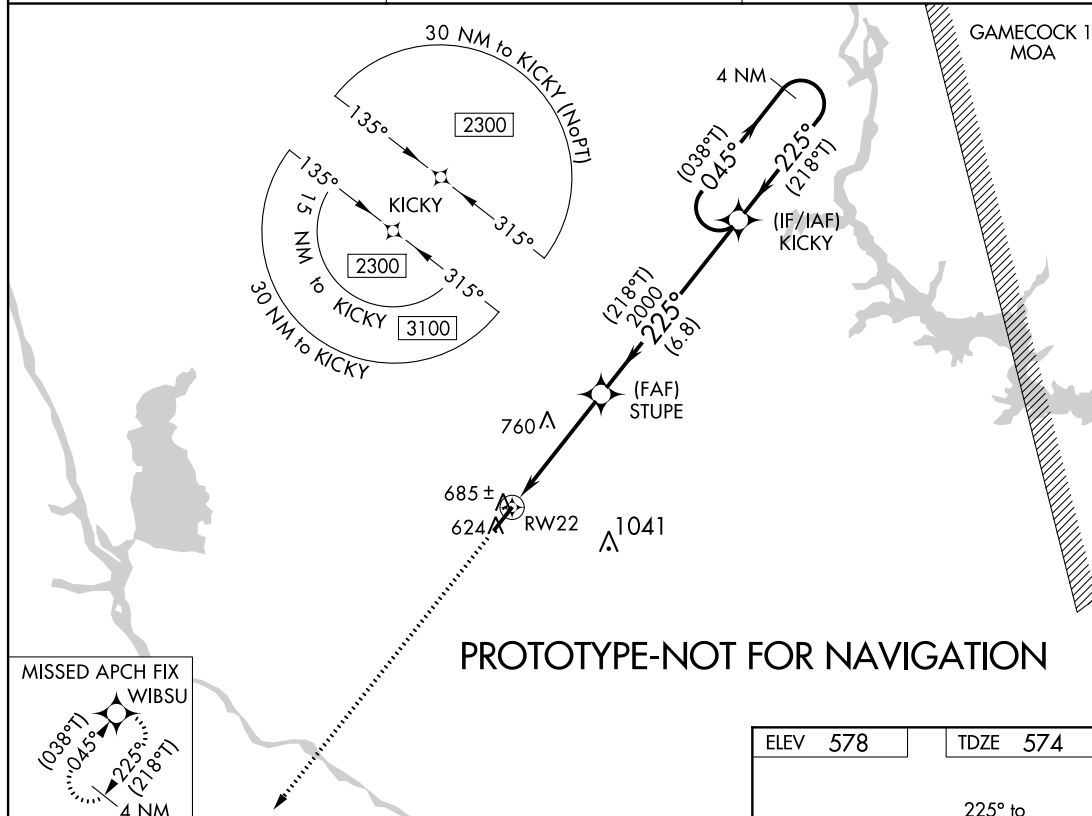
WAAS CH 97330 W22A	APP CRS 225°	Rwy Idg TDZE Apt Elev	5003 574 578
--	------------------------	-----------------------------	---

RNAV (GPS) RWY 22

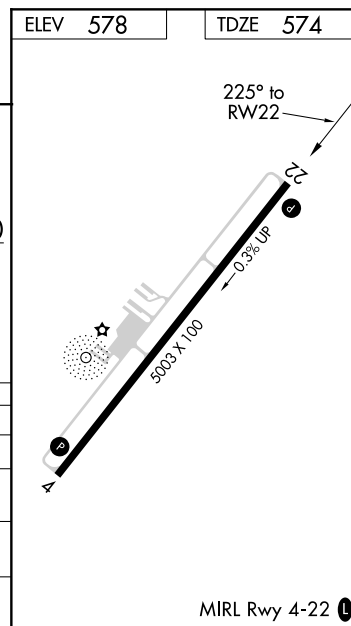
FAIRFIELD COUNTY (F'DW)

<p>⚠ For uncompensated Baro-VNAV systems, LNAV/VNAV NA below -16°C (4°F) or above 54°C (130°F). DME/DME RNP-0.3 NA.</p>	<p>MISSED APPROACH: Climb to 2300 direct WBSU and hold.</p>
--	---

AWOS-3 119.075	COLUMBIA APP CON 133.4 285.6	UNICOM 123.05 (CTAF) 0
--------------------------	--	----------------------------------



2300	WBSU	VGSI and RNAV glidepath not coincident (VGSI Angle 3.00/TCH 40).		4 NM Holding Pattern
*LNAV only.		STUPE		KICKY
		2000		(038°T) 045° 2300
				← 225° (218°T)
				GP 3.00° TCH 40
				1.3 NM 3.1 NM 6.8 NM
CATEGORY	A	B	C	D
LPV DA		824-7/8	250 (300-7/8)	
LNAV/VNAV DA		824-7/8	250 (300-7/8)	
LNAV MDA	1000-1	426 (500-1)	1000-1 1/4	426 (500-1 1/4)
C CIRCLING	1000-1 422 (500-1)	1040-1 462 (500-1)	1080-1 1/2 502 (600-1 1/2)	1360-2 1/2 782 (800-2 1/2)



AUTOMATED AL-6281 RNAV (GPS) RWY 22

SE-2
31 AUG 17
COMPILER: HD
REVIEWER:
DBL CHKR:
EFF: FIG

WINNSBORO, SOUTH CAROLINA

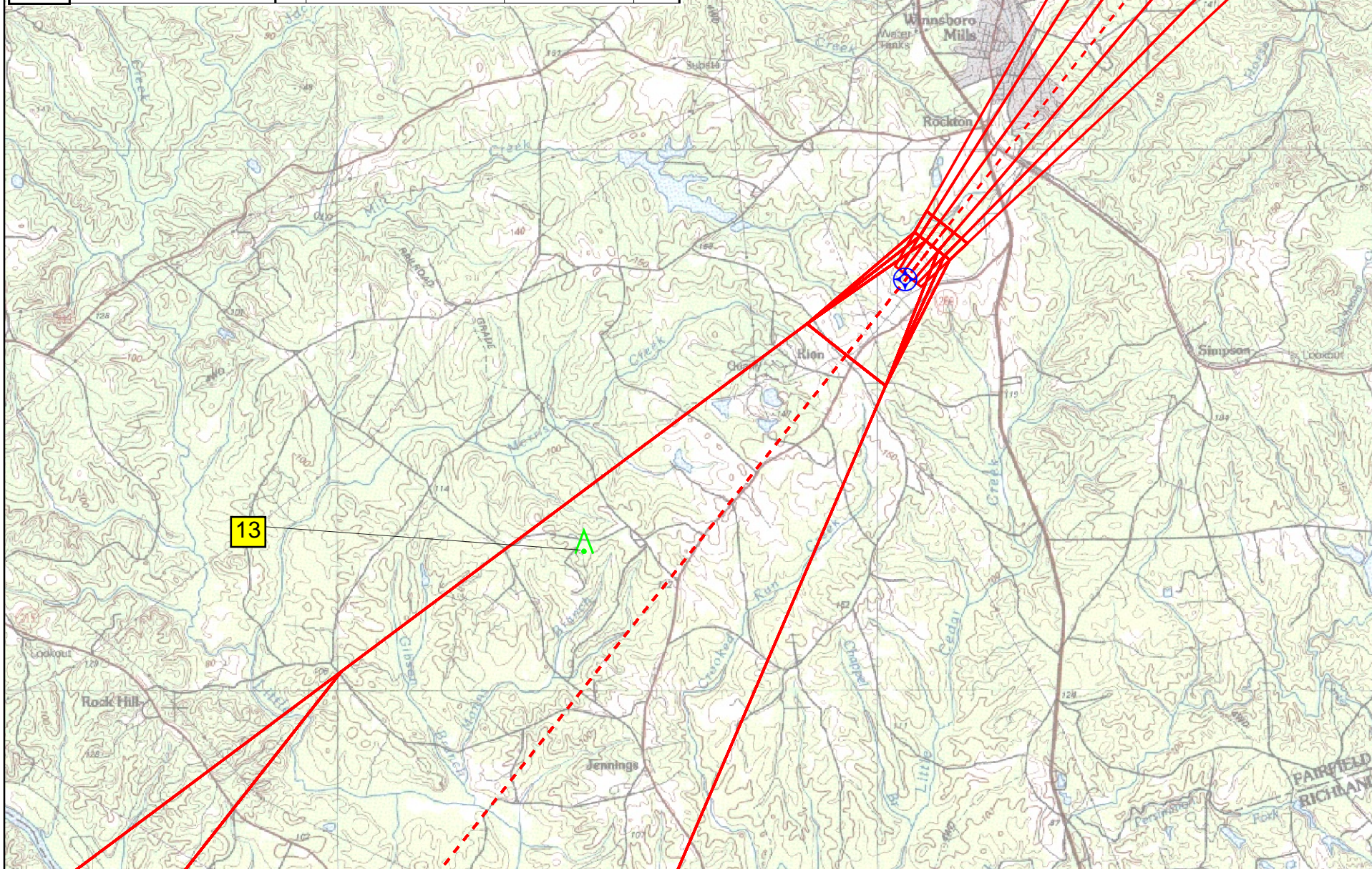
FAIRFIELD COUNTY (F'DW)

Amdt 2 FIG

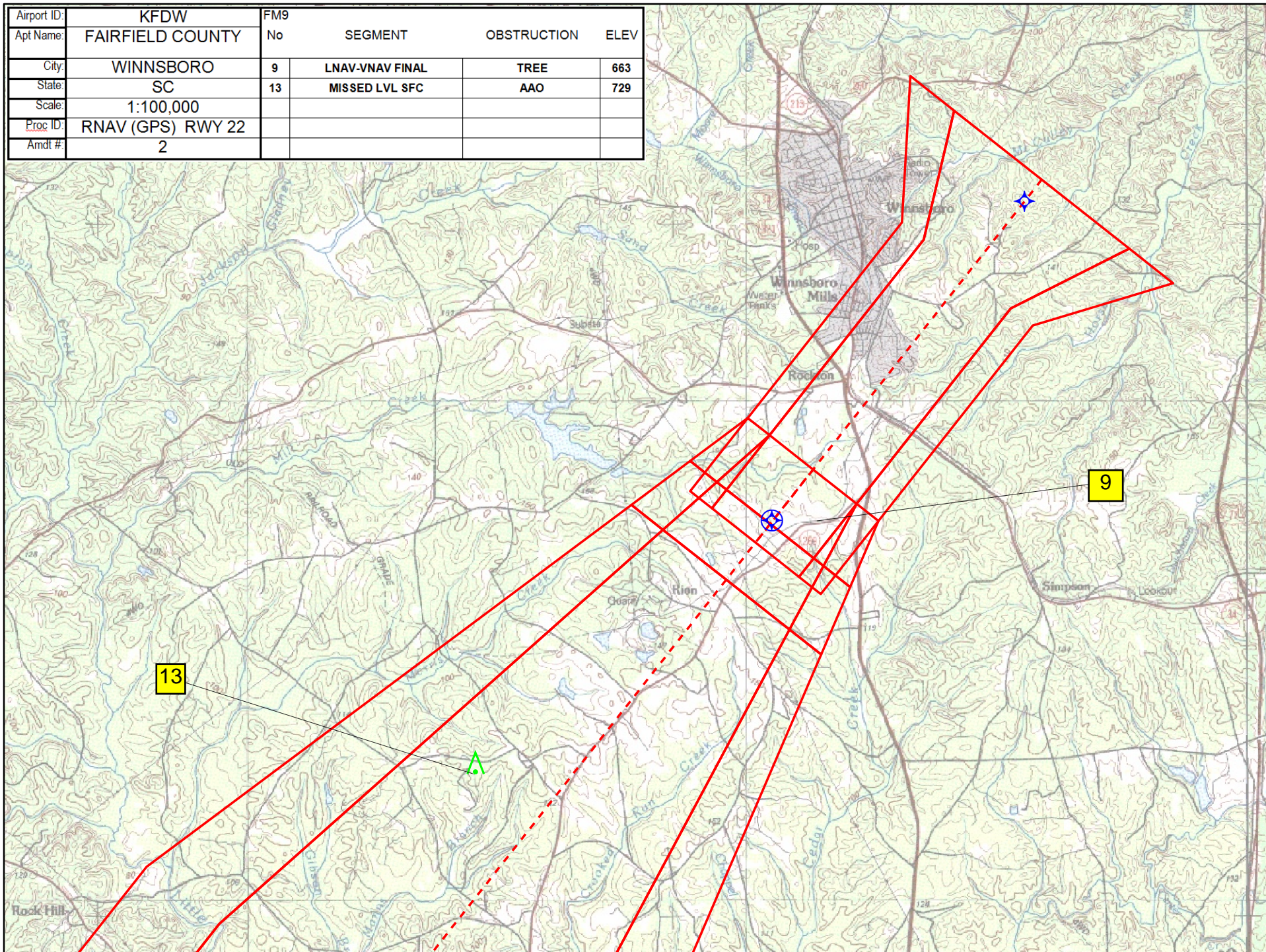
34°19'N-81°07'W

RNAV (GPS) RWY 22

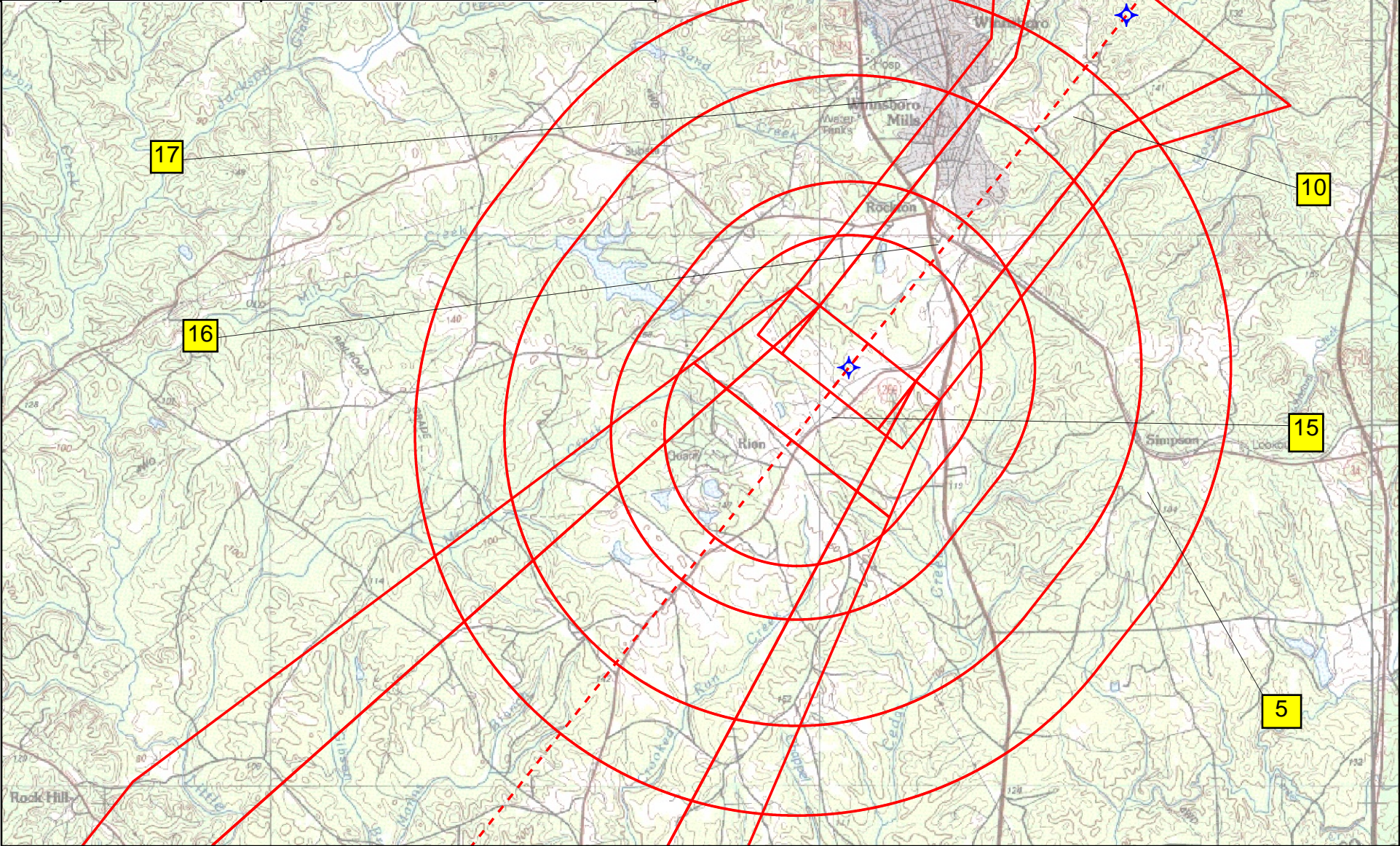
Airport ID:	KFDW	FM9			
Apt Name:	FAIRFIELD COUNTY	No	SEGMENT	OBSTRUCTION	ELEV
City:	WINNSBORO		LPV FINAL	ASC	
State:	SC	13	MISSED LVL SFC	AAO	729
Scale:	1:100,000				
Proc ID:	RNAV (GPS) RWY 22				
Amdt #:	2				



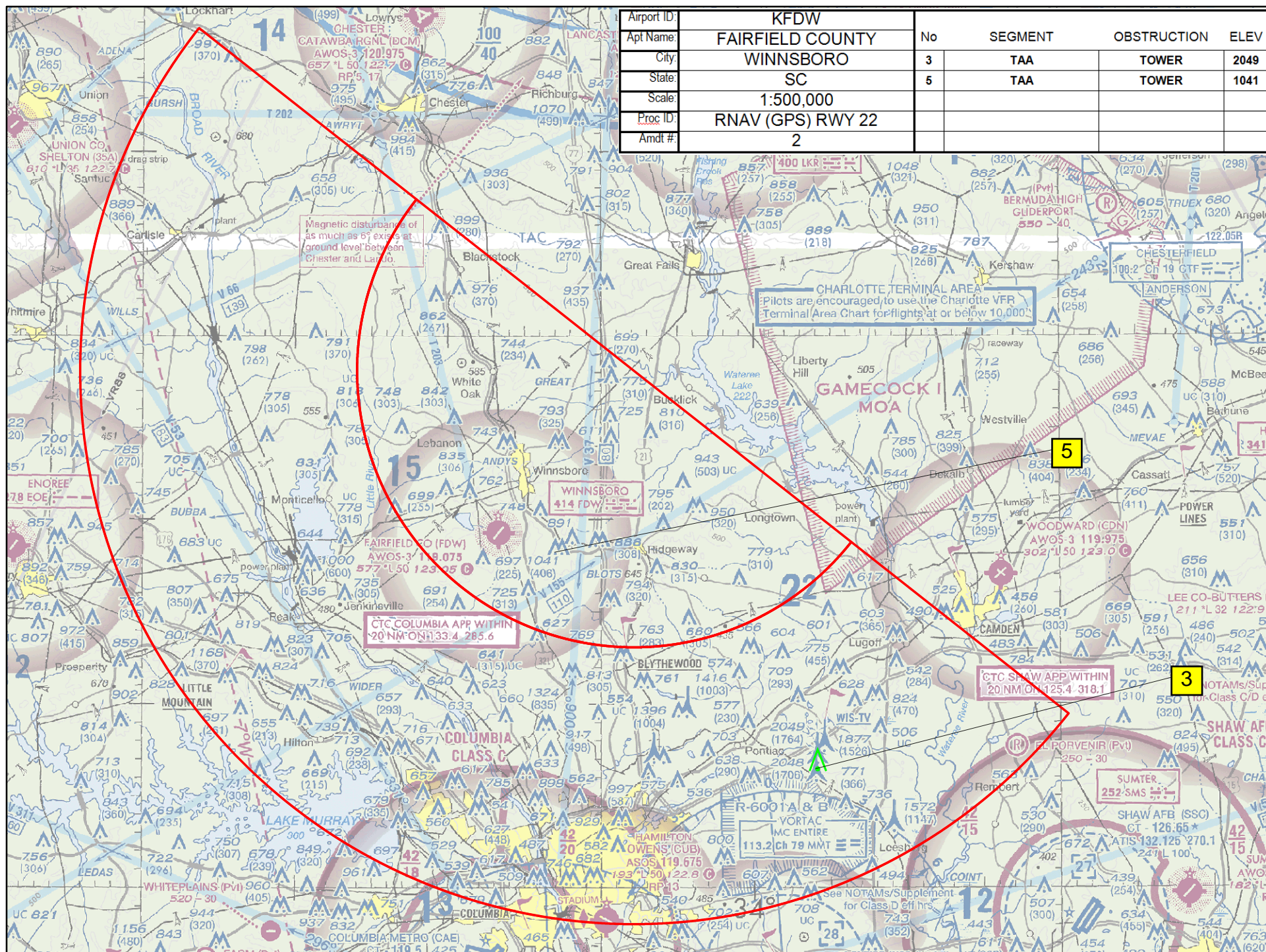
Airport ID:	KFDW	FM9			
Apt Name:	FAIRFIELD COUNTY	No	SEGMENT	OBSTRUCTION	ELEV
City:	WINNSBORO	9	LNAV-VNAV FINAL	TREE	663
State:	SC	13	MISSED LVL SFC	AAO	729
Scale:	1:100,000				
Proc ID:	RNAV (GPS) RWY 22				
Amdt #:	2				

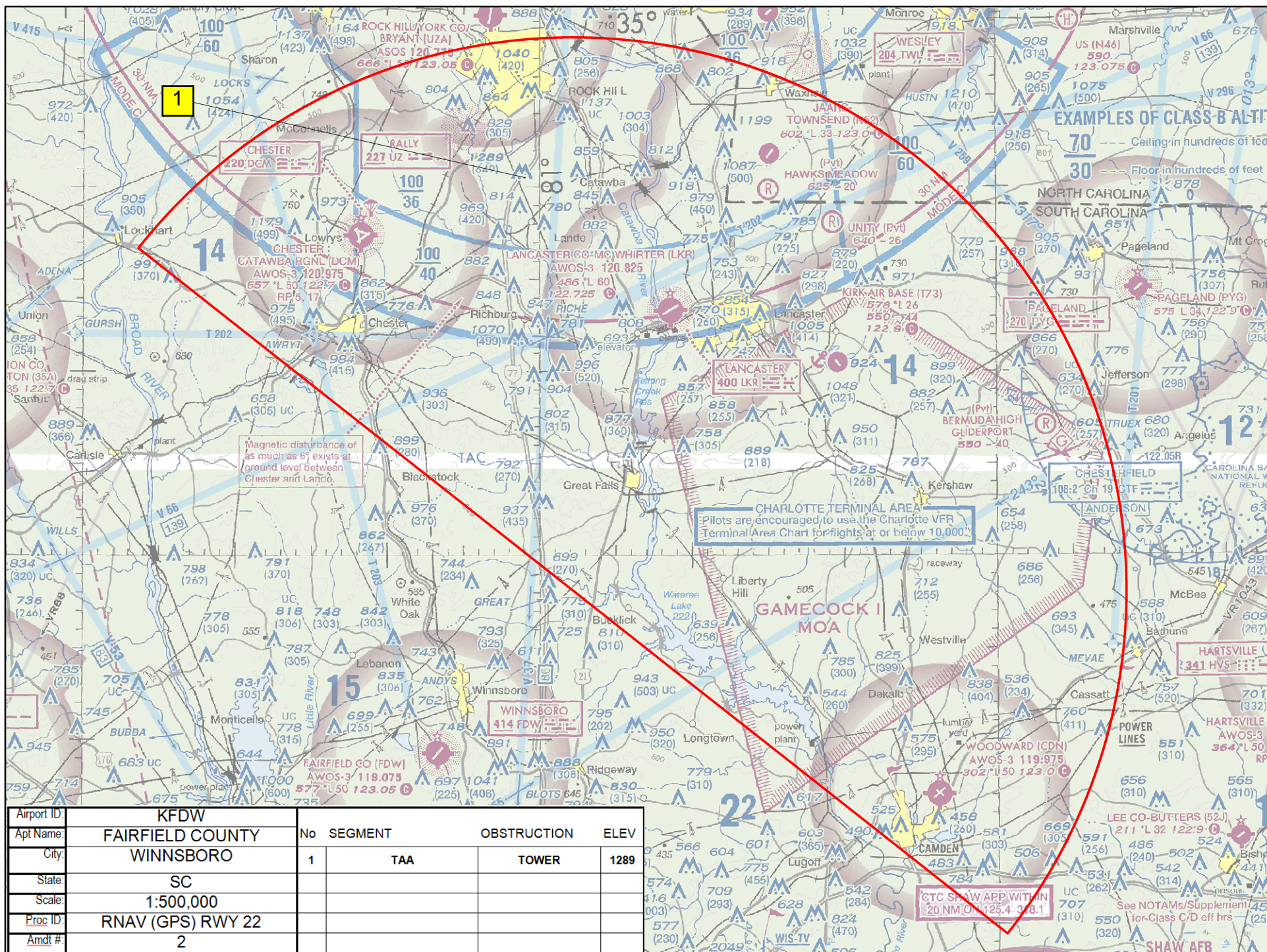


Airport ID:	KFDW	FM9			
Apt Name:	FAIRFIELD COUNTY	No	SEGMENT	OBSTRUCTION	ELEV
City:	WINNSBORO	10	LNAV FINAL	AAO	749
State:	SC				
		15	CIRCLING A	TREE	680
Scale:	1:100,000	16	CIRCLING B	TOWER	710
		17	CIRCLING C	TOWER	764
Proc ID:	RNAV (GPS) RWY 22	5	CIRCLING D	TOWER	1041
Amdt #:	2				



Airport ID:	KFDW	No	3	SEGMENT	TAA	OBSTRUCTION	TOWER	ELEV	2049
Apt Name:	FAIRFIELD COUNTY		5	TAA		TOWER			1041
City:	WINNSBORO								
State:	SC								
Scale:	1:500,000								
Proc ID:	RNAV (GPS) RWY 22								
Amdt #:	2								





TERMINAL AIRSPACE DATA REQUIREMENTS

CITY: WINNSBORO

STATE: SC

AIRPORT NAME: FAIRFIELD COUNTY

ID: KFDW

PROCEDURE: RNAV (GPS) RWY 22

AMDT: 2

DOCKET # :

(96-AXX-X/Required/Not Required)

ALL DIST TO 1/100 NM; ELEV TO NEAREST FT; COORD TO 1/100 SEC; DEG TO 1/100 DG.

- | | | | |
|---|------------|--------------------------------|-------------|
| 1. Distance from | THLD | to 1000' point | 2.83 |
| <small>(Enter THLD, FAF, ARP, FACILITY, as appropriate)</small> | | | |
| 2. Width of | FINAL | segment at 1000' point | 1.20 |
| <small>(Enter appropriate segment , final, intermediate, etc.)</small> | | | |
| 3. True Course of | FINAL | segment containing 1000' point | 218.28 |
| 4. High Terrain in | THLD | segment containing 1000' point | 535 |
| 5. Distance from | THLD | to 1500' point | 4.40 |
| <small>(If 1500' point in PT maneuvering area or holding pattern note in remarks)</small> | | | |
| 6. Width of | FINAL | segment at 1500' point | 2.13 |
| 7. True Course of | FINAL | segment containing 1500' point | 218.28 |
| 8. High Terrain in | FINAL | segment containing 1500' point | 535 |
| 9. Threshold Coordinates (if straight-in) ... | 341916.95N | / | 0810611.46W |
| 10. ARP Coordinates | 341855.70N | / | 0810631.70W |
| 11. Runway Approach End and distance furthest from ARP.....RWY | | | 22 |
| | | Distance | 45 NM |
| 12. FAF Coordinates | 342244.61N | / | 0810253.97W |
| <small>(Click to Select)</small> | | | |

REMARKS: