

Flight Procedure Tracking Form		Action: FLIGHT CHECK	Task Type: IAP	Date Open: 06/19/2014	Task #: 2014061931053901001	Request #: 20140619310539
Procedure: RNAV (GPS) RWY 4 AMDT 2			Airport ID: KFDW	Airport: FAIRFIELD COUNTY		Reimbursable #: NO
City: WINNSBORO	ST: SC	GPS #:	Estimated Chart Date: 12/07/2017		FICO #:	
Fac ID: N/A		Fac. Type:			Specialist: BRETT CANNON	
Procedure Review						
	Rec'd	Rel'd	Full Name	Comments		
Lead:	06/12/2017	08/07/2017	BEV L BORDY	<div>QUALITY</div> <div>10</div> <div>CHECKED</div>		
QA:	08/07/2017					
Liaison:						
Procedure Comments:			Remark Type: INFORMATION			
PENDING DATA USED FOR KFDW AIRPORT AND RUNWAYS CONTACT: PATRICK MULQUEEN, (405) 954-4073 OR JACOB POWERS, (405) 954-8702 <div style="text-align: right;">ARI SAVED 8/29/17</div>						

WAAS CH 82329 W04A	APP CRS 045°	Rwy Idg 5003 TDZE 577 Apt Elev 577
--	------------------------	---

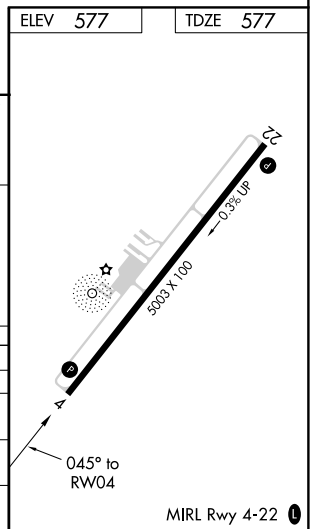
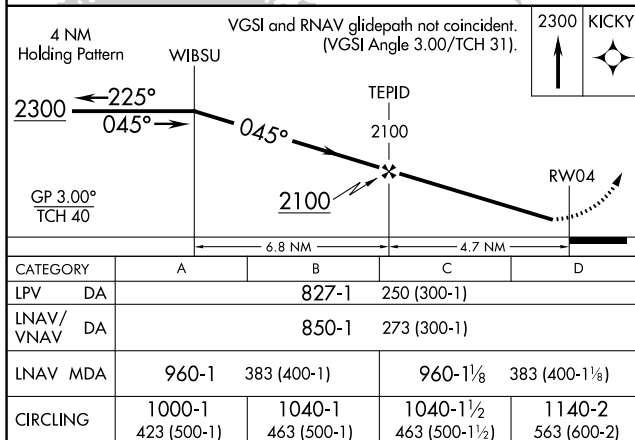
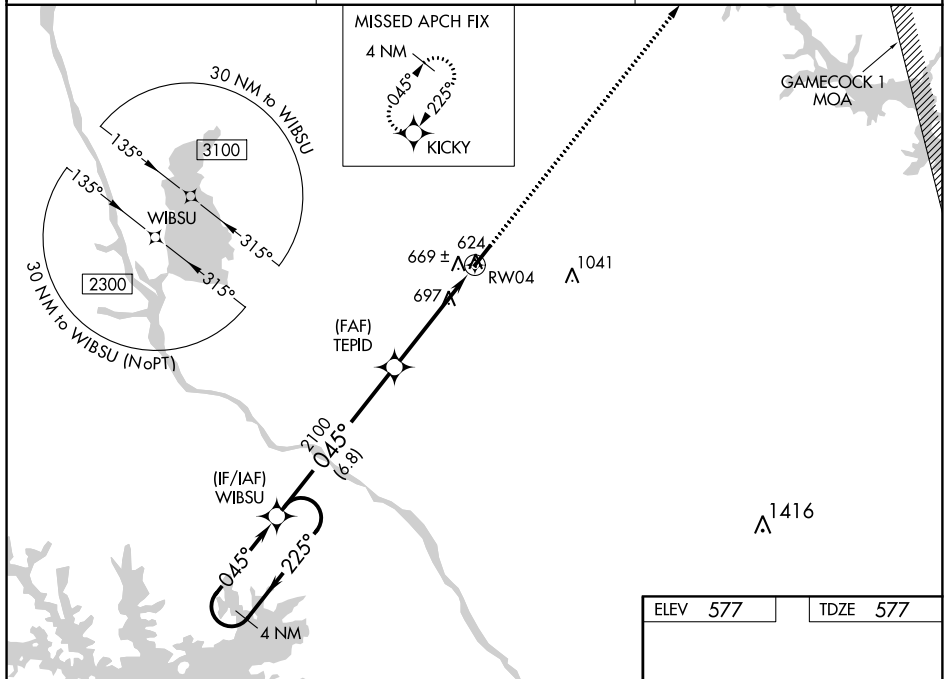
RNAV (GPS) RWY 4

FAIRFIELD COUNTY (FDW)

▼ Baro-VNAV NA when using Columbia Metropolitan altimeter setting. For uncompensated Baro-VNAV systems, LNAV/VNAV NA below -16°C (4°F) or above 40°C (104°F). Night landing: Rwy 4 NA. DME/DME RNP-0.3 NA. Helicopter visibility reduction below 1 SM NA. When local altimeter setting not received, use Columbia Metropolitan altimeter setting and increase all DA and MDA 100 feet and increase LPV all Cats visibility $\frac{1}{8}$ mile and LNAV/VNAV all Cats and LNAV Cats C and D visibility $\frac{1}{4}$ mile.

MISSED APPROACH:
Climb to 2300 direct
KICKY and hold.

AWOS-3 119.075	COLUMBIA APP CON 133.4 285.6	UNICOM 123.05 (CTAF) 0
--------------------------	--	----------------------------------



SE-2, 17 AUG 2017 to 14 SEP 2017

SE-2, 17 AUG 2017 to 14 SEP 2017

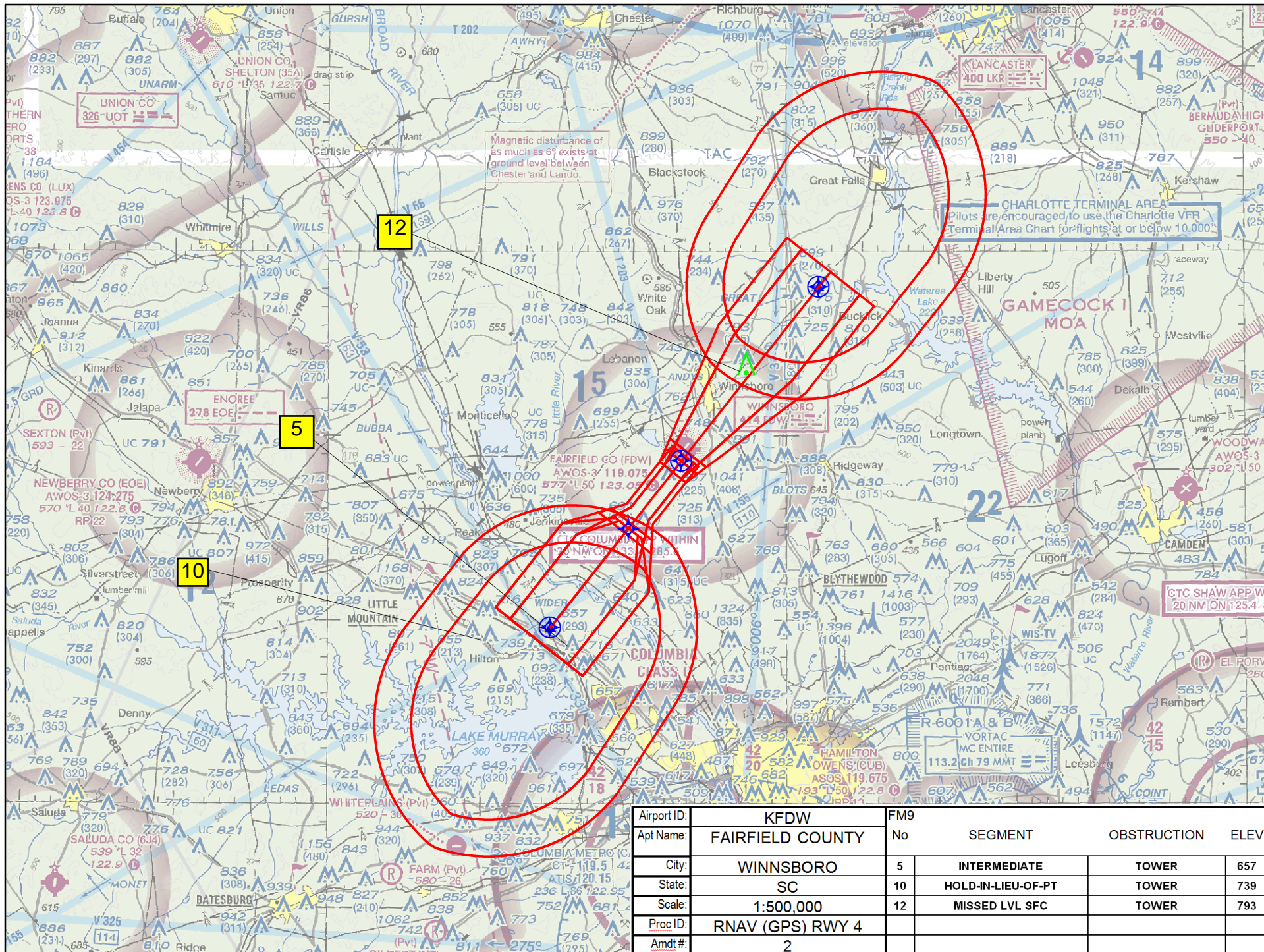
FIG

RNAV (GPS) RWY 4

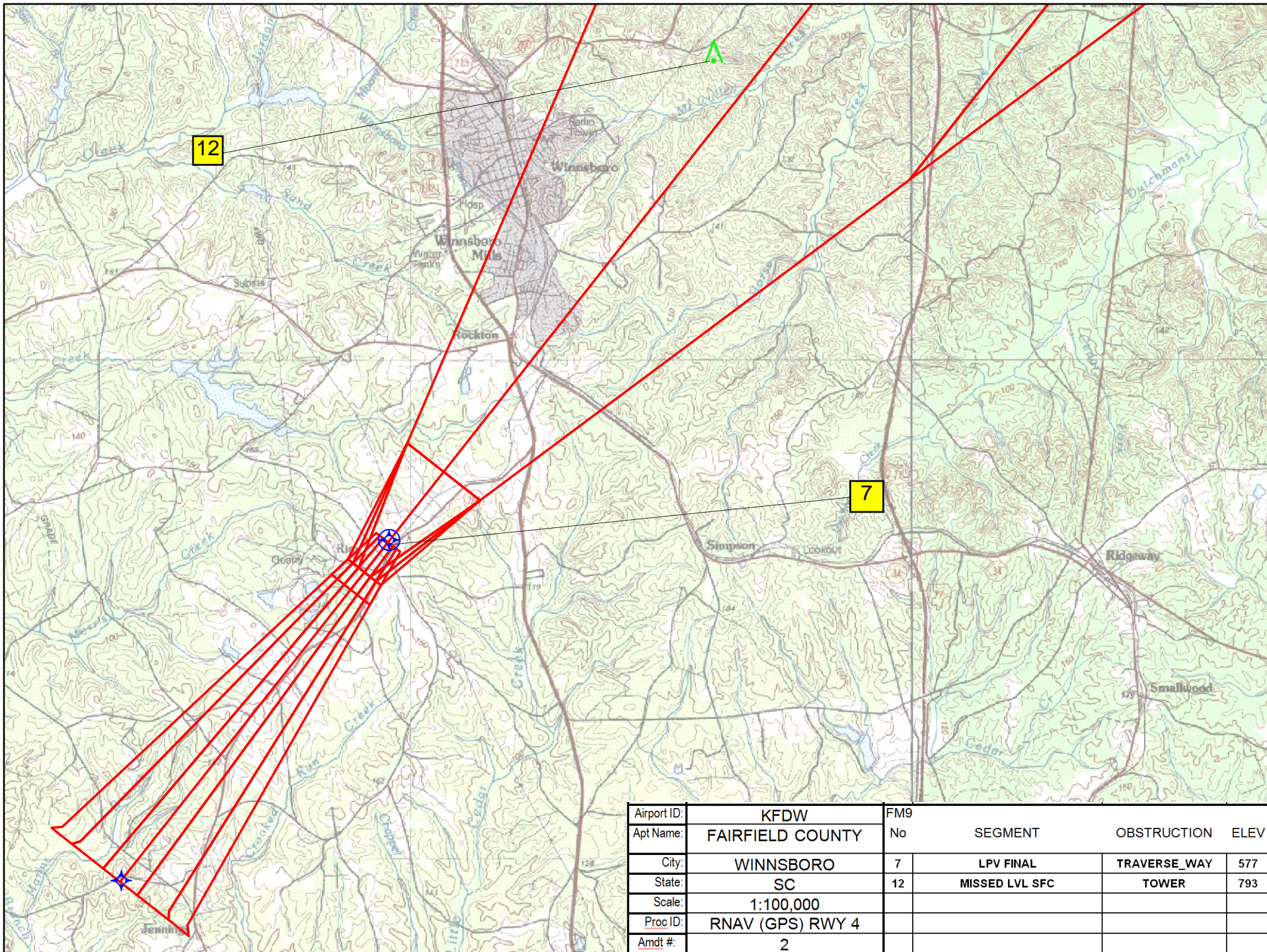
FAIRFIELD COUNTY (FDW)

MISSED APPROACH: Climb to 2300 direct KICKY and hold.

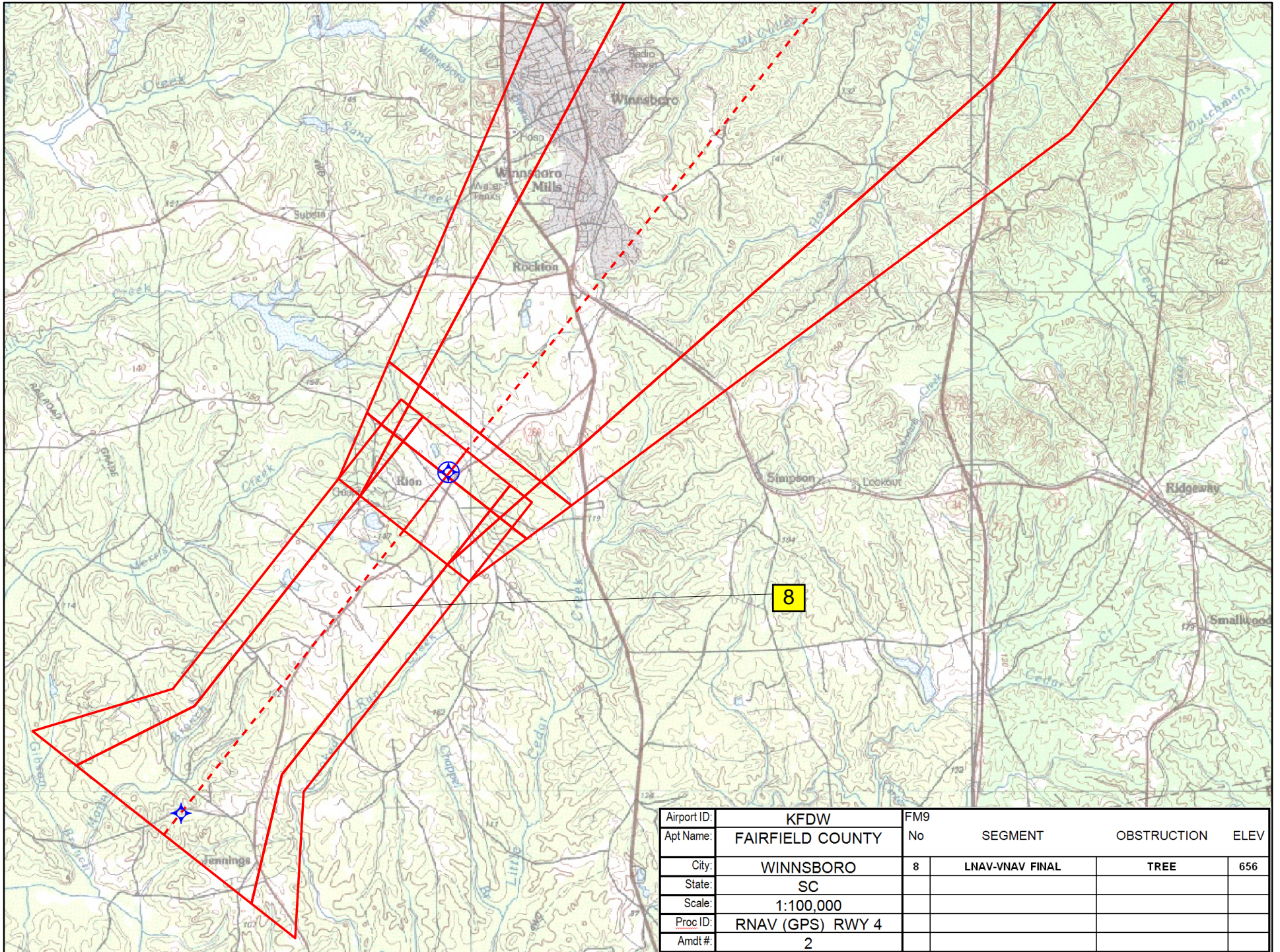
RNAV (GPS) RWY 4

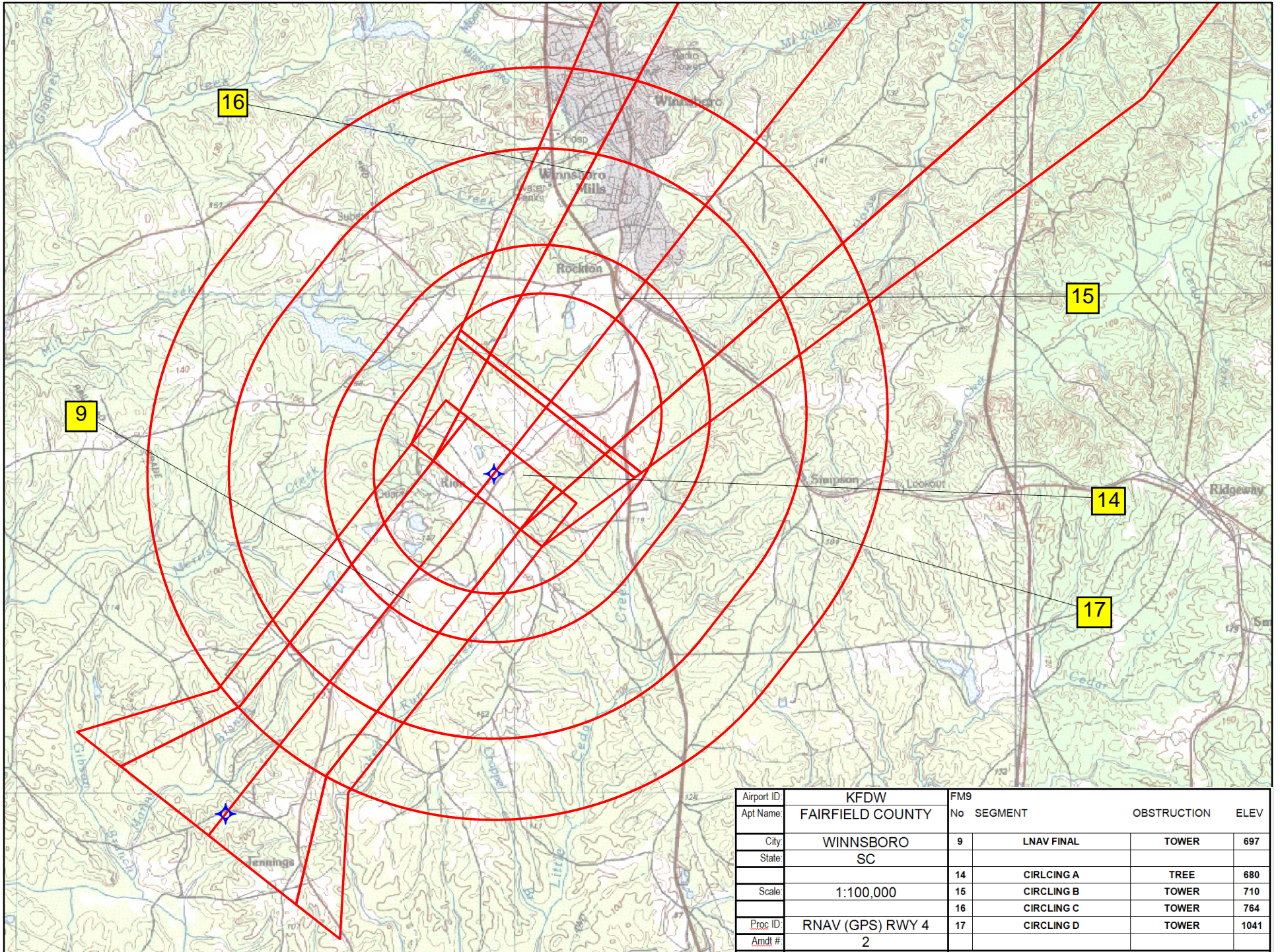


Airport ID:	KFDW	FM9			
Apt Name:	FAIRFIELD COUNTY	No	SEGMENT	OBSTRUCTION	ELEV
City:	WINNSBORO	5	INTERMEDIATE	TOWER	657
State:	SC	10	HOLD-IN-LIEU-OF-PT	TOWER	739
Scale:	1:500,000	12	MISSED LVL SFC	TOWER	793
Proc ID:	RNAV (GPS) RWY 4				
Amdt #:	2				

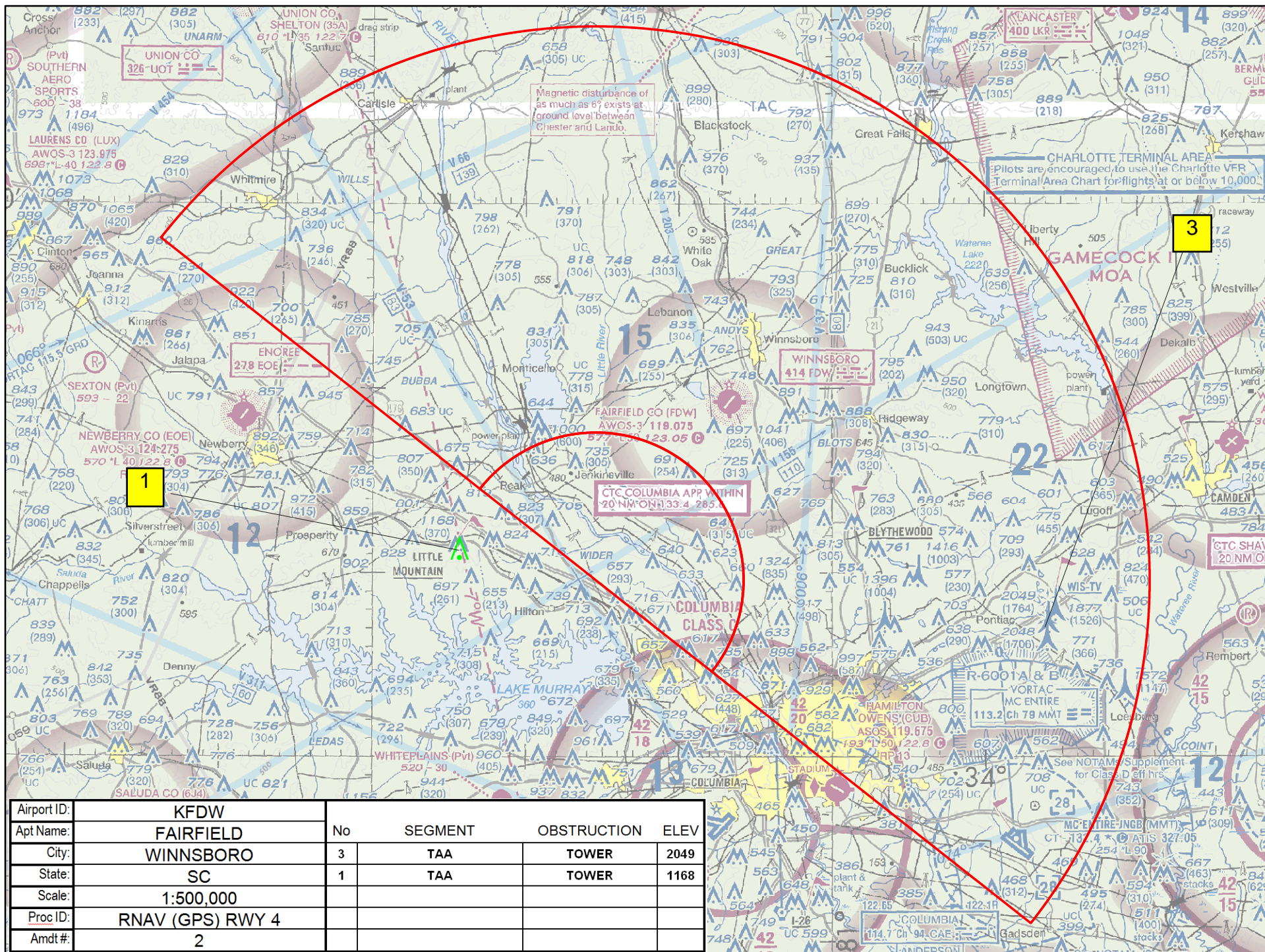


Airport ID:	KFDW	FM9			
Apt Name:	FAIRFIELD COUNTY	No	SEGMENT	OBSTRUCTION	ELEV
City:	WINNSBORO	7	LPV FINAL	TRAVERSE_WAY	577
State:	SC	12	MISSED LVL SFC	TOWER	793
Scale:	1:100,000				
Proc ID:	RNAV (GPS) RWY 4				
Amdt #:	2				

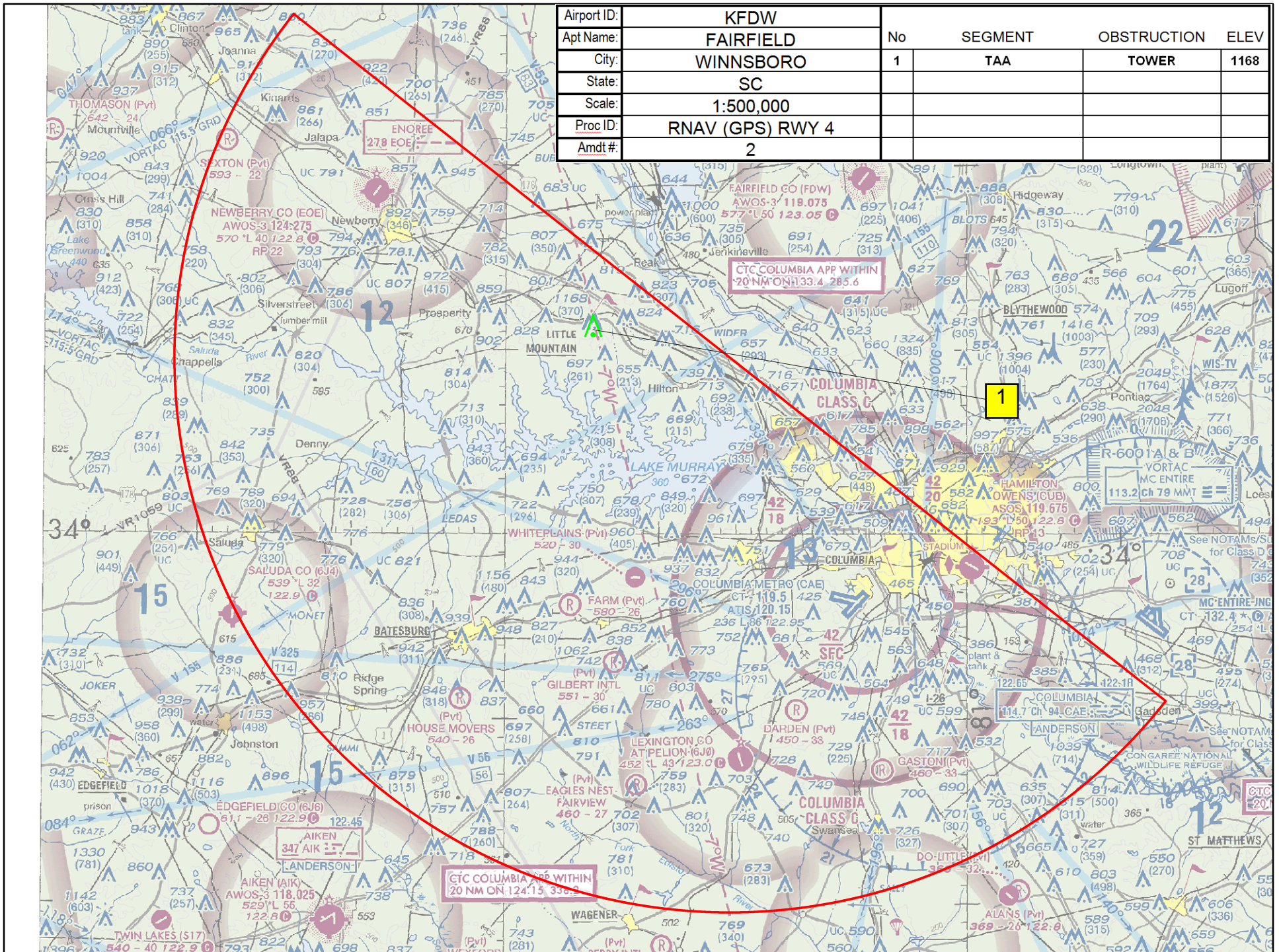




Airport ID:	KFDW	FM9		
Apt Name:	FAIRFIELD COUNTY	No	SEGMENT	OBSTRUCTION
City:	WINNSBORO	9	LNAV FINAL	TOWER
State:	SC			
		14	CIRCLING A	TREE
Scale:	1:100,000	15	CIRCLING B	TOWER
		16	CIRCLING C	TOWER
Proc ID:	RNAV (GPS) RWY 4	17	CIRCLING D	TOWER
Amdt #:	2			



Airport ID:	KFDW	No	SEGMENT	OBSTRUCTION	ELEV
Apt Name:	FAIRFIELD	1	TAA	TOWER	1168
City:	WINNSBORO				
State:	SC				
Scale:	1:500,000				
Proc ID:	RNAV (GPS) RWY 4				
Amdt #:	2				



TERMINAL AIRSPACE DATA REQUIREMENTS

CITY: WINNSBORO

STATE: SC

AIRPORT NAME: FAIRFIELD COUNTY

ID: KFDW

PROCEDURE: RNAV (GPS) RWY 4

AMDT: 2

DOCKET # :

(96-AXX-X/Required/Not Required)

ALL DIST TO 1/100 NM; ELEV TO NEAREST FT; COORD TO 1/100 SEC; DEG TO 1/100 DG.

- | | | | |
|---|------------|--------------------------------|-------------|
| 1. Distance from | THLD | to 1000' point | 3.12 |
| <small>(Enter THLD, FAF, ARP, FACILITY, as appropriate)</small> | | | |
| 2. Width of | FINAL | segment at 1000' point | 1.20 |
| <small>(Enter appropriate segment , final, intermediate, etc.)</small> | | | |
| 3. True Course of | FINAL | segment containing 1000' point | 38.22 |
| 4. High Terrain in | FINAL | segment containing 1000' point | 581 |
| 5. Distance from | THLD | to 1500' point | 4.69 |
| <small>(If 1500' point in PT maneuvering area or holding pattern note in remarks)</small> | | | |
| 6. Width of | FINAL | segment at 1500' point | 2.13 |
| 7. True Course of | FINAL | segment containing 1500' point | 38.22 |
| 8. High Terrain in | FINAL | segment containing 1500' point | 581 |
| 9. Threshold Coordinates (if straight-in) ... | 341838.08N | / | 0810648.39W |
| 10. ARP Coordinates | 341855.70N | / | 0810631.70W |
| 11. Runway Approach End and distance furthest from ARP.....RWY | | | 22 |
| | | Distance | 45 NM |
| 12. FAF Coordinates | 341456.77N | / | 0811018.45W |
| <small>(Click to Select)</small> | | | |

REMARKS:

RUNWAY 4 DISPLACED THRESHOLD 239 FEET.