

<b>Flight Procedure Tracking Form</b>		<b>Action:</b> FLIGHT CHECK	<b>Task Type:</b> IAP	<b>Date Open:</b> 06/18/2014	<b>Task #:</b> 2014061831096201001	<b>Request #:</b> 20140618310962
<b>Procedure:</b> RNAV (GPS) RWY 12 AMDT 1			<b>Airport ID:</b> KMAE	<b>Airport:</b> MADERA MUNI		<b>Reimbursable #:</b> NO
<b>City:</b> MADERA	<b>ST:</b> CA	<b>GPS #:</b>	<b>Estimated Chart Date:</b> 07/21/2016		<b>FICO #:</b>	
<b>Fac ID:</b> N/A		<b>Fac. Type:</b>			<b>Specialist:</b> KISSY MAXFIELD	
<b>Procedure Review</b>						
	<b>Rec'd</b>	<b>Rel'd</b>	<b>Full Name</b>	<b>Comments</b>		
<b>Lead:</b>	12/04/2015					
<b>QA:</b>		3/7, 3/29, 4/22, 4/28	CLARK			
<b>Liaison:</b>						
<b>Procedure Comments:</b> ENROUTE-NON <b>Remark Type:</b> INFORMATION  PENDING DATA USED FOR KMAE AIRPORT AND RUNWAYS ASSIGNED MAGVAR: KMAE: OLD 16E, NEW 13E CONTACT LEAD: ALAN WILL 405.954.6103						

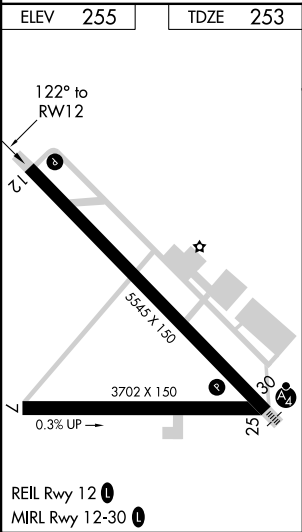
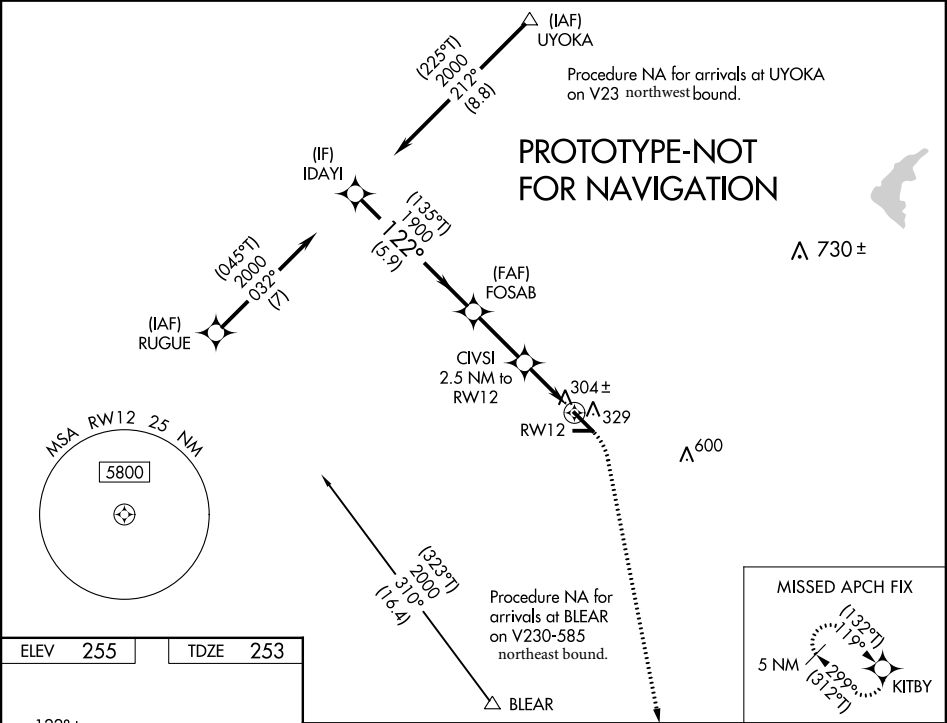
WAAS CH <b>62909</b> <b>W12A</b>	APP CRS <b>122°</b>	Rwy Idg TDZE Apt Elev	<b>5545</b> <b>253</b> <b>255</b>
--	------------------------	-----------------------------	---

RNAV (GPS) RWY 12  
MADERA MUNI (MAE)

For uncompensated Baro-VNAV systems, LNAV/VNAV NA below -4°C (25°F) or above 54°C (130°F). DME/DME RNP-0.3 NA. Circling NA to Rwy 8 and 26. Baro-VNAV NA when using Fresno Yosemite INTL altimeter setting. When local altimeter setting not received, use Fresno Yosemite altimeter setting and increase all DA 64 feet and all visibility 1/4 mile; increase all MDA 80 feet and all visibility 1/4 mile. VDP NA when using Fresno Yosemite INTL altimeter setting.

MISSED APPROACH:  
Climb to 700, then Climbing right turn to 2000 direct KITBY and hold.

ASOS <b>134.725</b>	FRESNO APP CON <b>119.45</b>	UNICOM <b>122.8 (CTAF)</b>
------------------------	---------------------------------	-------------------------------



*LNAV only			
CATEGORY	A	B	D
LPV DA	503-7/8	250 (300-7/8)	NA
LNAV/VNAV DA	503-7/8	250 (300-7/8)	NA
LNAV MDA	560-1	307 (400-1)	560-7/8 307 (400-7/8)
CIRCLING	680-1 425 (500-1)	720-1 465 (500-1)	720-1 1/2 465 (500-15%)

No	SEGMENT	OBSTRUCTION	ELEV
	LNAV/VNAV	ASC	
12	MISS	TOWER	575

Airport ID	KMAE
Apt Name	MADERA MUNI
City	MADERA
State	CA
Proc ID	RNAV (GPS) RWY 12
Amdt	1
Date	2/29/16
Scale	1:100,000

12

MAE  
Transverse Mercator  
Scale 1:100000

No	SEGMENT	OBSTRUCTION	ELEV
	LNAV/VNAV	ASC	
12	MISS	TOWER	575

Airport ID	KMAE
Apt Name	MADERA MUNI
City	MADERA
State	CA
Proc ID	RNAV (GPS) RWY 12
Amdt	1
Date	2/29/16
Scale	1:100,000

12

MAE  
Transverse Mercator  
Scale 1:100000

No	SEGMENT	OBSTRUCTION	ELEV
	LNAV/VNAV	ASC	
12	MISS	TOWER	575

Airport ID	KMAE
Apt Name	MADERA MUNI
City	MADERA
State	CA
Proc ID	RNAV (GPS) RWY 12
Amdt	1
Date	2/29/16
Scale	1:100,000

12

MAE  
Transverse Mercator  
Scale 1:100000

No	SEGMENT	OBSTRUCTION	ELEV
	LNAV/VNAV	ASC	
12	MISS	TOWER	575

Airport ID	KMAE
Apt Name	MADERA MUNI
City	MADERA
State	CA
Proc ID	RNAV (GPS) RWY 12
Amdt	1
Date	2/29/16
Scale	1:100,000

12

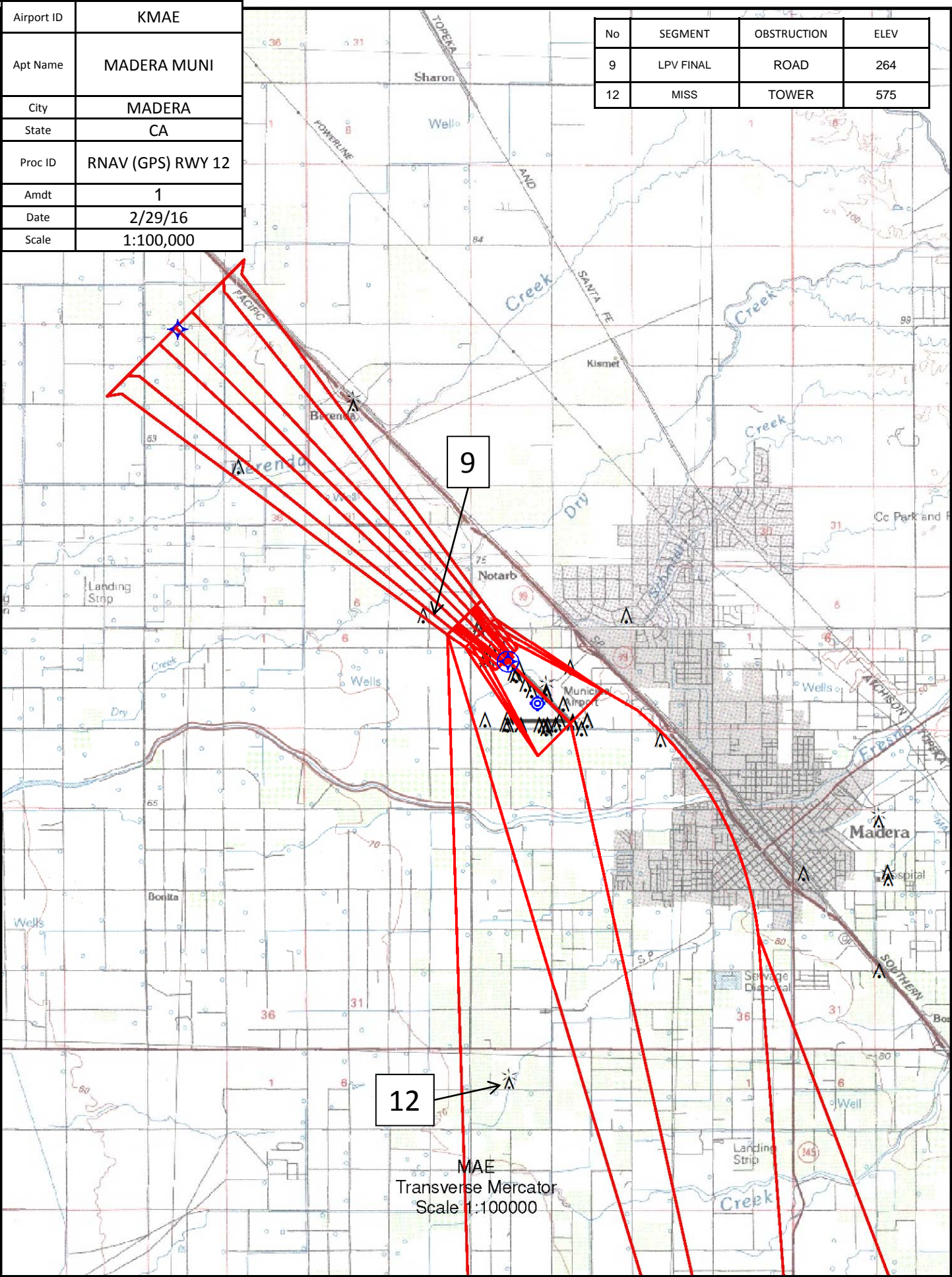
MAE  
Transverse Mercator  
Scale 1:100000



Airport ID	KMAE
Apt Name	MADERA MUNI
City	MADERA
State	CA
Proc ID	RNAV (GPS) RWY 12
Amdt	1
Date	2/29/16
Scale	1:100,000

No	SEGMENT	OBSTRUCTION	ELEV
9	LPV FINAL	ROAD	264
12	MISS	TOWER	575

37°00'N

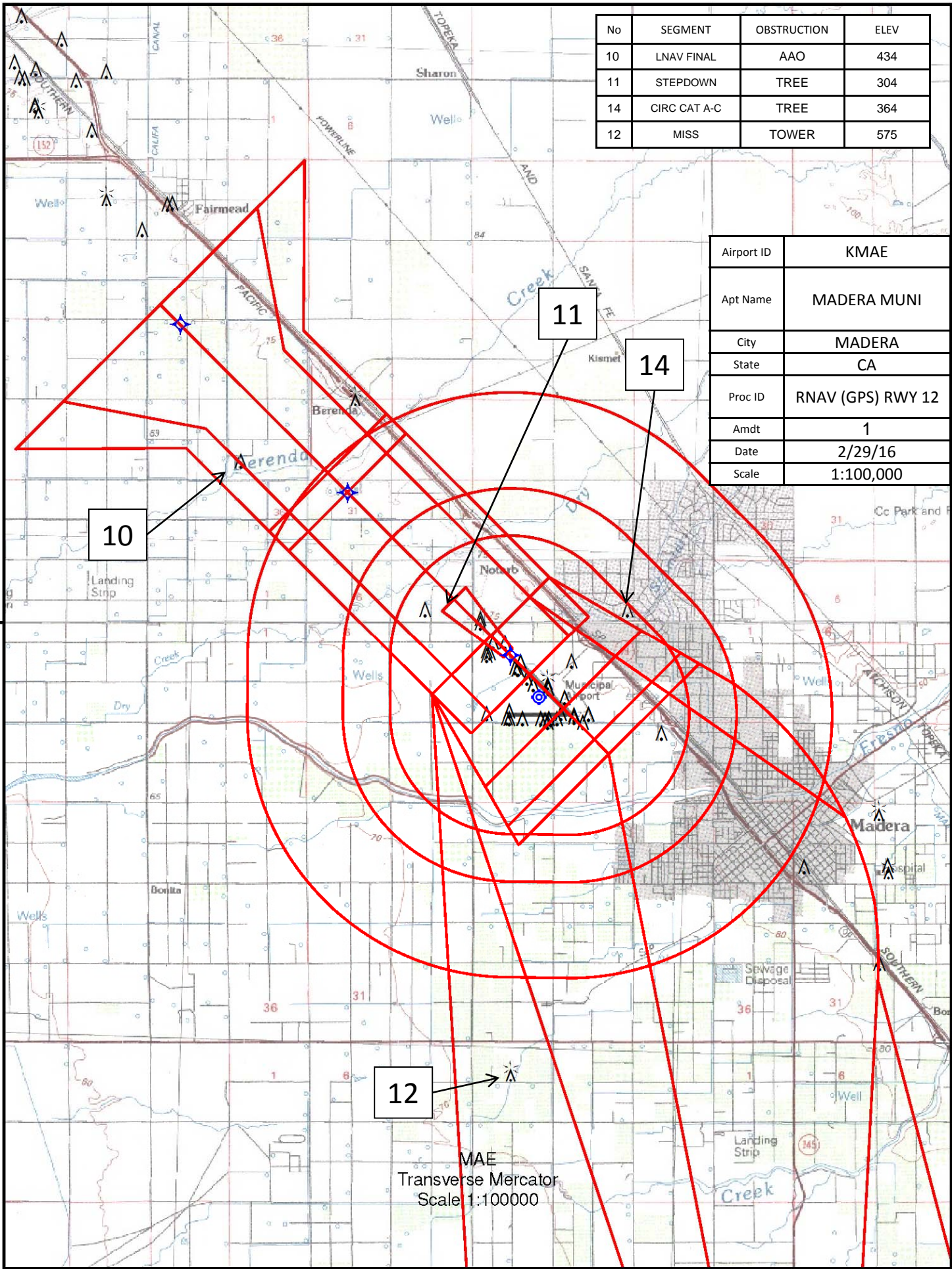




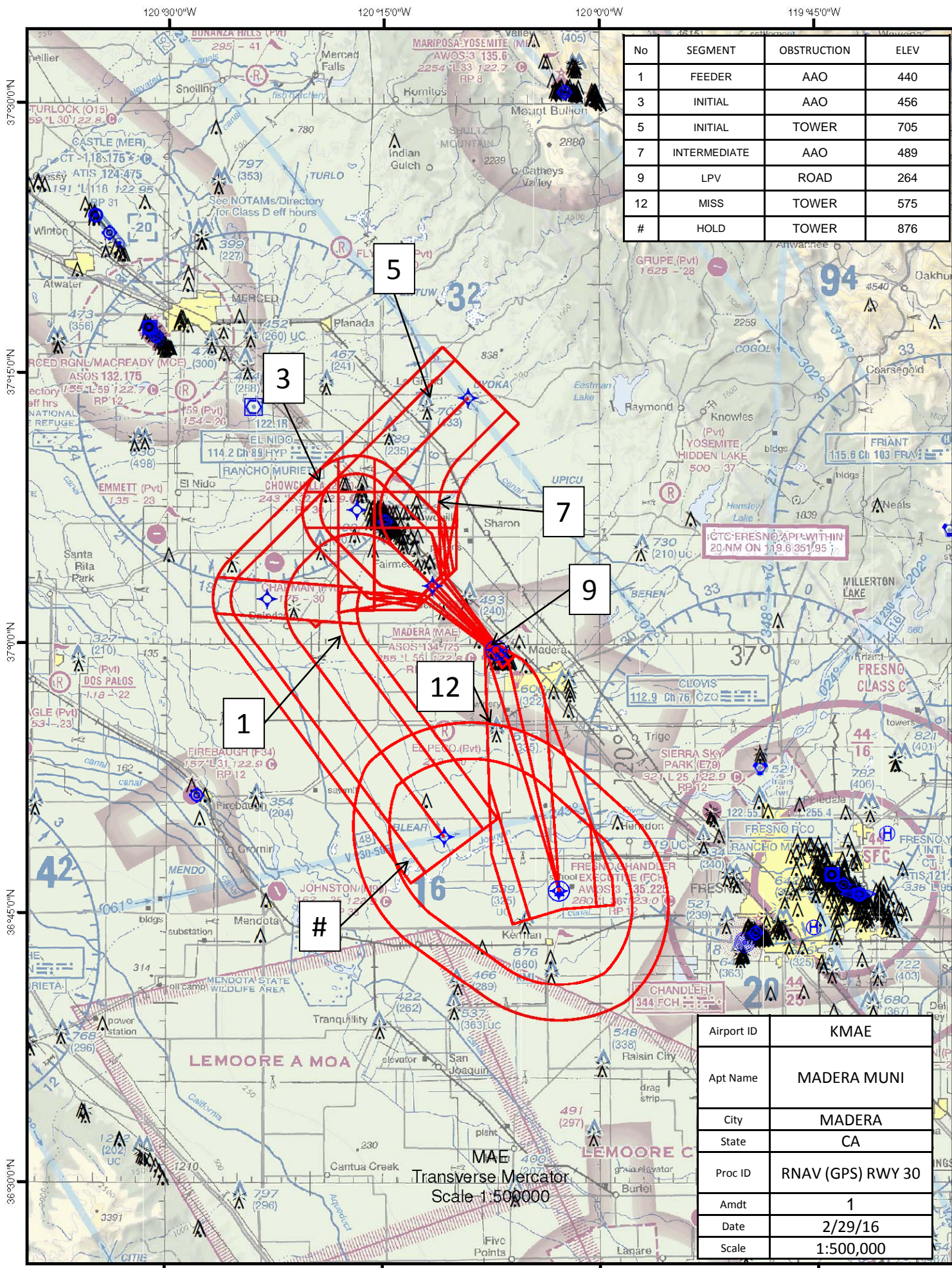
No	SEGMENT	OBSTRUCTION	ELEV
10	LNAV FINAL	AAO	434
11	STEPDOWN	TREE	304
14	CIRC CAT A-C	TREE	364
12	MISS	TOWER	575

Airport ID	KMAE
Apt Name	MADERA MUNI
City	MADERA
State	CA
Proc ID	RNAV (GPS) RWY 12
Amdt	1
Date	2/29/16
Scale	1:100,000

37°40'N







No	SEGMENT	OBSTRUCTION	ELEV
1	FEEDER	AAO	440
3	INITIAL	AAO	456
5	INITIAL	TOWER	705
7	INTERMEDIATE	AAO	489
9	LPV	ROAD	264
12	MISS	TOWER	575
#	HOLD	TOWER	876

Airport ID	KMAE
Apt Name	MADERA MUNI
City	MADERA
State	CA
Proc ID	RNAV (GPS) RWY 30
Amdt	1
Date	2/29/16
Scale	1:500,000



**DEPARTMENT OF TRANSPORTATION  
FEDERAL AVIATION ADMINISTRATION CATEGORICAL EXCLUSION  
DECLARATION**

**Madera Municipal Airport, Madera, CA**

**Magnetic Variation Adjustments and Update Take off Minimums & (Obstacle)  
Departure Procedures**

**Description of Action:**

Fresno Approach Control requests changes for the missed approach procedures on the RNAV (GPS) RWY 12 and RNAV (GPS) RWY 30 at Madera Municipal Airport, Madera, CA, so that the clearance limit is at FIX KITBY to eliminate airspace conflicts. The airport magnetic variation is also out of tolerance which also requires the TAKEOFF MINIMUMS AND (OBSTACLE) DEPARTURE PROCEDURES to be updated.

**Declaration of Exclusion:**

The FAA has reviewed the above referenced proposed action and it has been determined, by the undersigned, to be categorically excluded from further environmental documentation according to Order 1050.1F, "Environmental Impacts: Policies and Procedures". The implementation of this action will not result in any extraordinary circumstances in accordance with Order 1050.1F.

**Basis for this Determination:**


An Aircraft Procedure Environmental Prescreening Filter was prepared and reviewed by the Western Service Area. This review was conducted in accordance with policies and procedures in Department of Transportation Order 5610.1C, "Procedures for Considering Environmental Impacts" and FAA Order 1050.1F.

The applicable categorical exclusion(s) is 5-6.2. k. Publication of existing air traffic control procedures that do not essentially change existing tracks, create new tracks, change altitude or change concentration of aircraft on these tracks. (ATO, AVS).


**Facility Manager Review/Concurrence:**

Signature:  Date: 10-19-15  
Kenneth Powell  
Title: Air Traffic Manager, Fresno ATCT/TRACON  
Address: 5055 E. Anderson Ave., Fresno, CA 93727  
Phone: 559-255-5754 Fax: 559-255-6817

**Service Area Environmental Specialist Review/Concurrence**

Signature:  Date: 10/19/15  
Augustin Moses, P.E.  
Title: Environmental Protection Specialist, AJV-W2  
Address: 1601 Lind Avenue SW, Renton, WA 98057-6715  
Phone: (425) 203-4536 Fax: (425) 203-4505

**Service Area Director Review/Concurrence, if necessary**

Signature:  Date: 10/19/15  
Kim Stover, AJTWN  
Title: Acting Director of Air Traffic Operations, North  
Address: 1601 Lind Ave. SW, Renton, WA 98057  
Phone: 425-203-4022 Fax: 425-203-4045



## Aircraft Procedure Environmental Pre-Screening Filter Form

**Form Instructions** - The following aircraft procedures are major federal actions under the National Environmental Policy Act (NEPA): new instrument approach, departure, and en route procedures, and updates to currently approved aircraft procedures. This requires the FAA to undertake an environmental review of the proposed new or updated procedures. In some circumstances, the FAA can determine that the proposed action is the type that qualifies for a Categorical Exclusion (CATEX) and thus does not require preparation of an environmental assessment (EA) or environmental impact statement (EIS). In order to assist the FAA in making that determination, please complete the following form. All items on the form must be addressed.

This form is designed to expand and ask additional questions based on your responses. **Once the form is complete, please save the file as a PDF and email it as well as any additional requested attachments (such as a FAA facility third party concurrence or an electronic satellite or land use map) to the FAA specialist who is coordinating your procedure request.** Adobe Reader's Auto Complete feature may interfere with easily filling out this form. Please hover your mouse [here](#) for instructions on how to turn it off.

### Proponent Information

Request ID	0000	Title	Mr.
First Name	Augustin	Middle Initial	A
		Last Name	Moses
Company/Facility	FAA		
Street Address	1601 Lind Ave. SW	City	Renton
State/US Territory	Washington	Zip Code	98057
Phone Number	(425) 203-4536	Email	augustin.moses@faa.gov

### Procedure Location

☐ Procedure Location and Proponent Address are the same

Street Address	4020 Aviation Drive	City	Madera
State/US Territory	California	Zip Code	93637
		Location ID	MAE

### Procedure Details

Please describe the requested procedure

Fresno Approach Control requests changes for the missed approach procedures on the RNAV (GPS) RWY 12 and RNAV (GPS) RWY 30 at Madera Municipal Airport, Madera, CA, so that the clearance limit is at FIX KITBY to eliminate airspace conflicts. The airport magnetic variation is also out of tolerance which also requires the TAKEOFF MINIMUMS AND (OBSTACLE) DEPARTURE PROCEDURES to be updated.

Was the procedure request developed by a third party?

☐ Yes ☒ No

Select procedure type

☐ New Procedure ☒ Change of an Existing Procedure

Is the change only the following and not combined with another procedure request?

- ☐ Name Change  
☐ Altitude Increase  
☒ None of the Above

- ☐ Additional Lines of Minimum  
☐ Adding Notes to the Procedure

Minimum Altitude of Procedure Request

Enter Number of Procedures

Approaches/Arrivals

Enroute

Departures

Is This a Helicopter Only Request?

☐ Yes ☒ No

Does the Procedure Request Direct Aircraft Over One or More of the Following Areas:

Residential	Educational	Health	Religious Structures or Sites
Recreational	Cultural	Historic Sites	Parks, Not National
Wilderness Area, Not National		Wildlife Refuge, Not National	

**Note: Electronic Satellite (such as Google) or Land Use Map must be attached as a part of this submission.**

☐ Yes ☒ No

Does the Procedure Request Direct Aircraft Over One or More of the Following Areas:

National Parks	National Wilderness Area	National Wildlife Refuge
----------------	--------------------------	--------------------------

**Note: Electronic Satellite (such as Google) or Land Use Map must be attached as a part of this submission.**

☐ Yes ☒ No

☒ The information provided is complete and up to date at the time of submission.



# Federal Aviation Administration Categorical Exclusion Declaration

Date 10/15/15

First Name Augustin Middle Initial A Last Name Moses  
Title Mr. Company/Facility FAA

## Procedure Request Description:

Fresno Approach Control requests changes for the missed approach procedures on the RNAV (GPS) RWY 12 and RNAV (GPS) RWY 30 at Madera Municipal Airport, Madera, CA, so that the clearance limit is at FIX BEREN to eliminate airspace conflicts. The airport magnetic variation is also out of tolerance which also requires the TAKEOFF MINIMUMS AND (OBSTACLE) DEPARTURE PROCEDURES to be updated.

Declaration of Exclusion: The FAA has reviewed the above referenced proposed action and it has been determined, by the undersigned, to be categorically excluded from further environmental documentation according to FAA Order 1050.1, "Environmental Impacts: Policies and Procedures." The implementation of this action will not result in any extraordinary circumstances in accordance with FAA Order 1050.1.

Basis for this Determination: This review was conducted in accordance with policies and procedures in Department of Transportation Order 5610.1, "Procedures for Considering Environmental Impacts" and FAA Order 1050.1.

The applicable categorical exclusions is/are:

5-6.5.k. Publication of existing air traffic control procedures that do not essentially change existing tracks, create new tracks, change altitude, or change concentration of aircraft on these tracks. (ATO, AVS).

Concurrence/Reviewed By: Date

Title:

The above flight procedure has been developed within the accepted parameters.

Concurrence/Reviewed By: Date

Title:

Approved By: Date

Title: