

Flight Procedure Tracking Form		Action: FLIGHT CHECK	Task Type: IAP	Date Open: 08/13/2014	Task #: 2014061209010401001	Request #: 20140612090104
Procedure: RNAV (GPS) RWY 4 AMDT 2			Airport ID: KCLI	Airport: CLINTONVILLE MUNI		Reimbursable #: NO
City: CLINTONVILLE	ST: WI	GPS #:	Estimated Chart Date: 06/22/2017		FICO #:	
Fac ID: N/A		Fac. Type:			Specialist: KELLY DEAN	
Procedure Review						
	Rec'd	Rel'd	Full Name	Comments		
Lead:	11/29/2016					
QA:			J ZEDER 02/22/2017 16			
Liaison:						
Procedure Comments:			ENROUTE	Remark Type: INFORMATION		
POC FOR THIS ACTION IS DON LANIER, 405-954-8242						

WAAS CH 86516 W04A	APP CRS 045°	Rwy Idg TDZE Apt Elev	3300 826 826
--	------------------------	-----------------------------	---

RNAV (GPS) RWY 4

CLINTONVILLE MUNI (CLI)



For uncompensated Baro-VNAV systems, LNAV/VNAV NA below -16°C (4°F) or above 54°C (130°F). Rwy 9, 14, 27 helicopter visibility reduction below 1 SM NA. Rwy 4 helicopter visibility reduction below ¾ SM NA. DME/DME RNP -0.3 NA. Circling Rwy 14 NA at night.

MISSED APPROACH:
Climb to 3000 direct
COPUV and hold.

AWOS-3
120.675

GREEN BAY APP CON ★
126.3 338.2

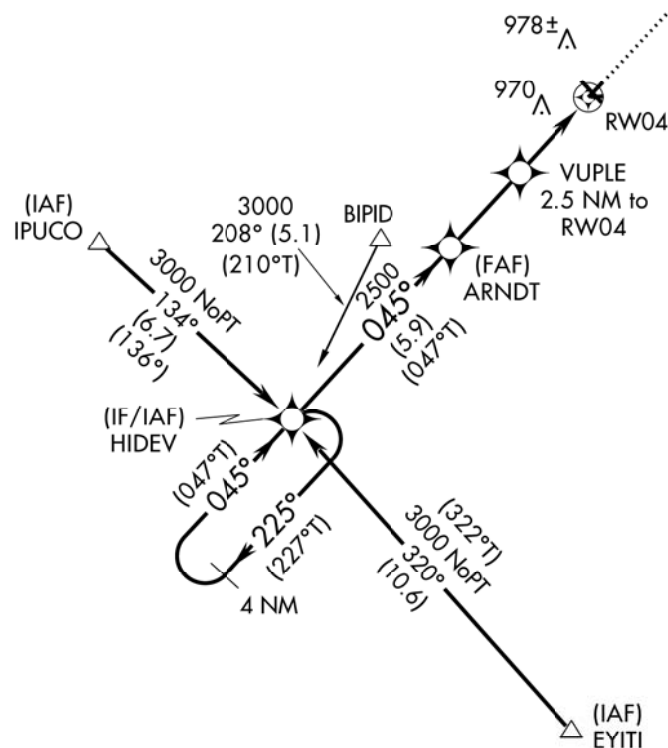
GCO
121.725

UNICOM
122.8 (CTAF) 1

△
1540

△
1294

MISSED APCH FIX
4 NM
(047°T) 045° 225° (227°T)
COPUV



PROTOTYPE-NOT
FOR NAVIGATION



ELEV 826

TDZE 826

4 NM
Holding Pattern
(227°T)
3000
← 225°
045° →
(047°T)
GP 3.00°
TCH 52

HIDEV

ARNDT

2500

VUPLE

2.5 NM to RW04

*1.1 NM to RW04

RW04

2500

*1660

3000 COPUV



*LNAV only

5.9 NM 2.6 NM 1.4 NM 1.1 NM

CATEGORY	A	B	C	D
LPV DA	1076-1	250 (300-1)		NA
LNAV/VNAV DA	1229-1 3/8	403 (500-1 3/8)		NA
LNAV MDA	1220-1	394 (400-1)		NA
CIRCLING	1340-1	514 (600-1)		NA

045° to RW04

REIL Rwy 32 1
MIRL Rwy 4-22 and 14-32 1

OLD

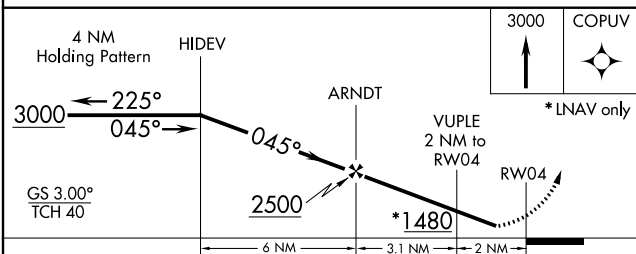
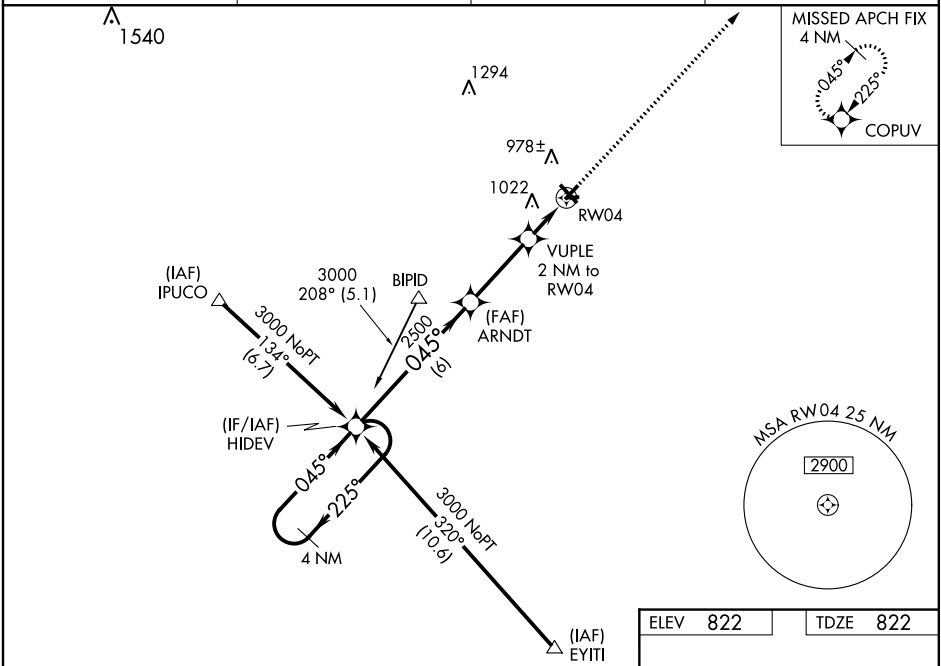
WAAS CH 86516 W04A	APP CRS 045°	Rwy Idg TDZE Apt Elev	3300 822 822
--	------------------------	-----------------------------	---

RNAV (GPS) RWY 4
CLINTONVILLE MUNI (CLI)

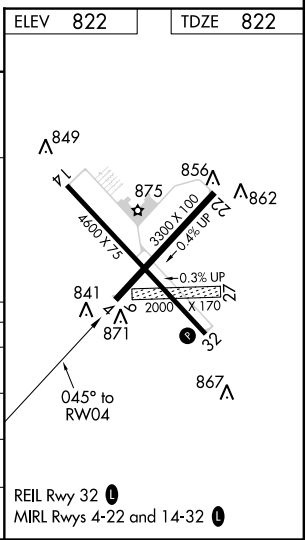
⚠ Baro-VNAV NA when using Green Bay altimeter setting. For uncompensated Baro-VNAV systems, LNAV/VNAV NA below -16°C (4°F) or above 54°C (130°F).
⚠ DME/DME RNP-0.3 NA. Visibility reduction by helicopters NA.
Circling to Rwy 4-22 NA for Cat C. When local altimeter setting not received, use Green Bay altimeter setting and increase all DA/MDA 80 feet. Increase LPV all Cats visibility ¼ mile.

MISSED APPROACH:
Climb to 3000 direct
COPUV and hold.

AWOS-3 120.675	GREEN BAY APP CON ★ 126.3 338.2	GCO 121.725	UNICOM 122.8 (CTAF) ①
--------------------------	---	-----------------------	---------------------------------



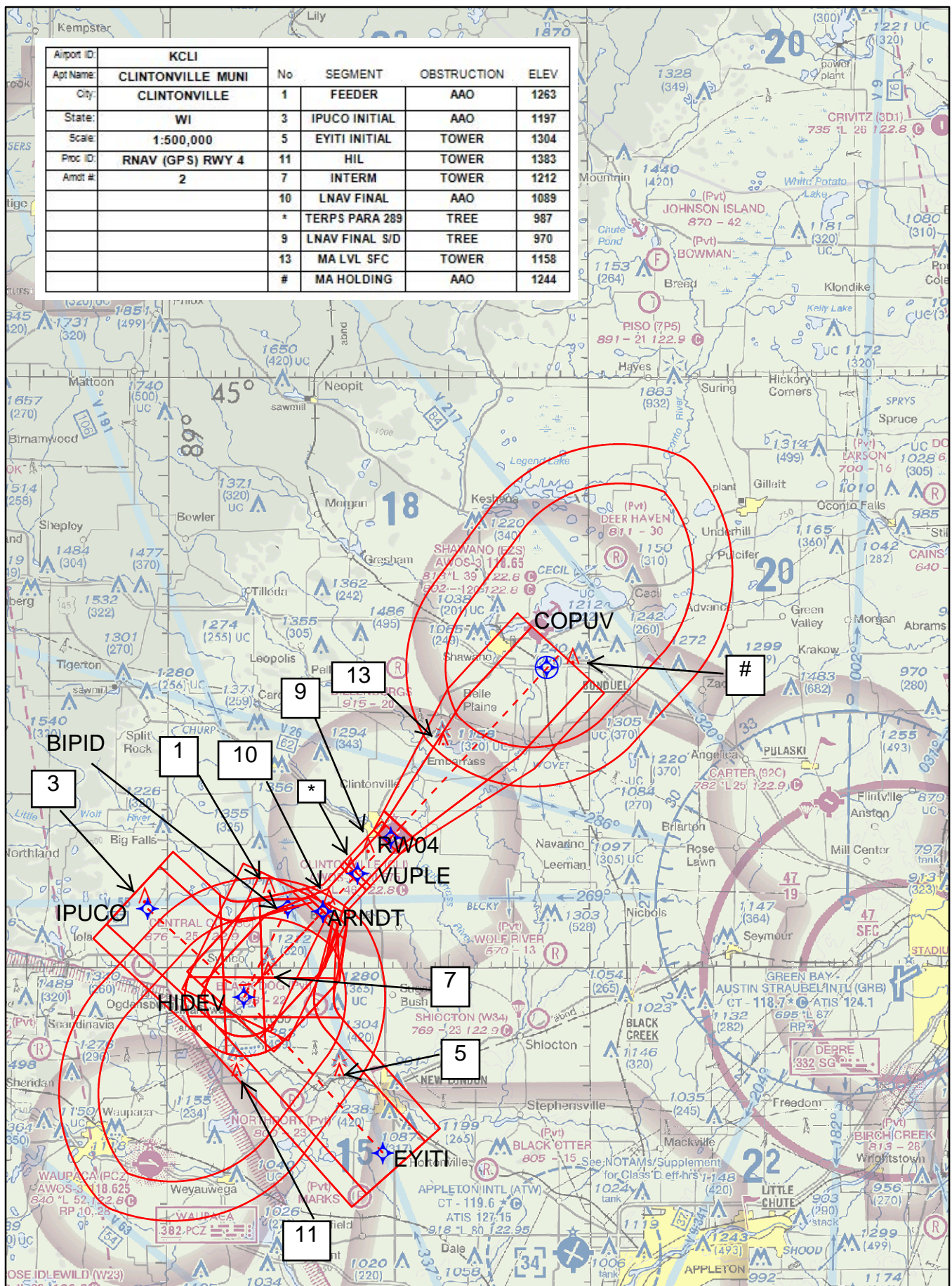
CATEGORY	A	B	C	D
LPV DA	1179-1¼	357 (400-1¼)		NA
LNNAV/VNAV DA	1366-2	544 (600-2)		NA
LNNAV MDA	1260-1	438 (500-1)		NA
CIRCLING	1340-1	518 (600-1)	1340-1½ 518 (600-1½)	NA



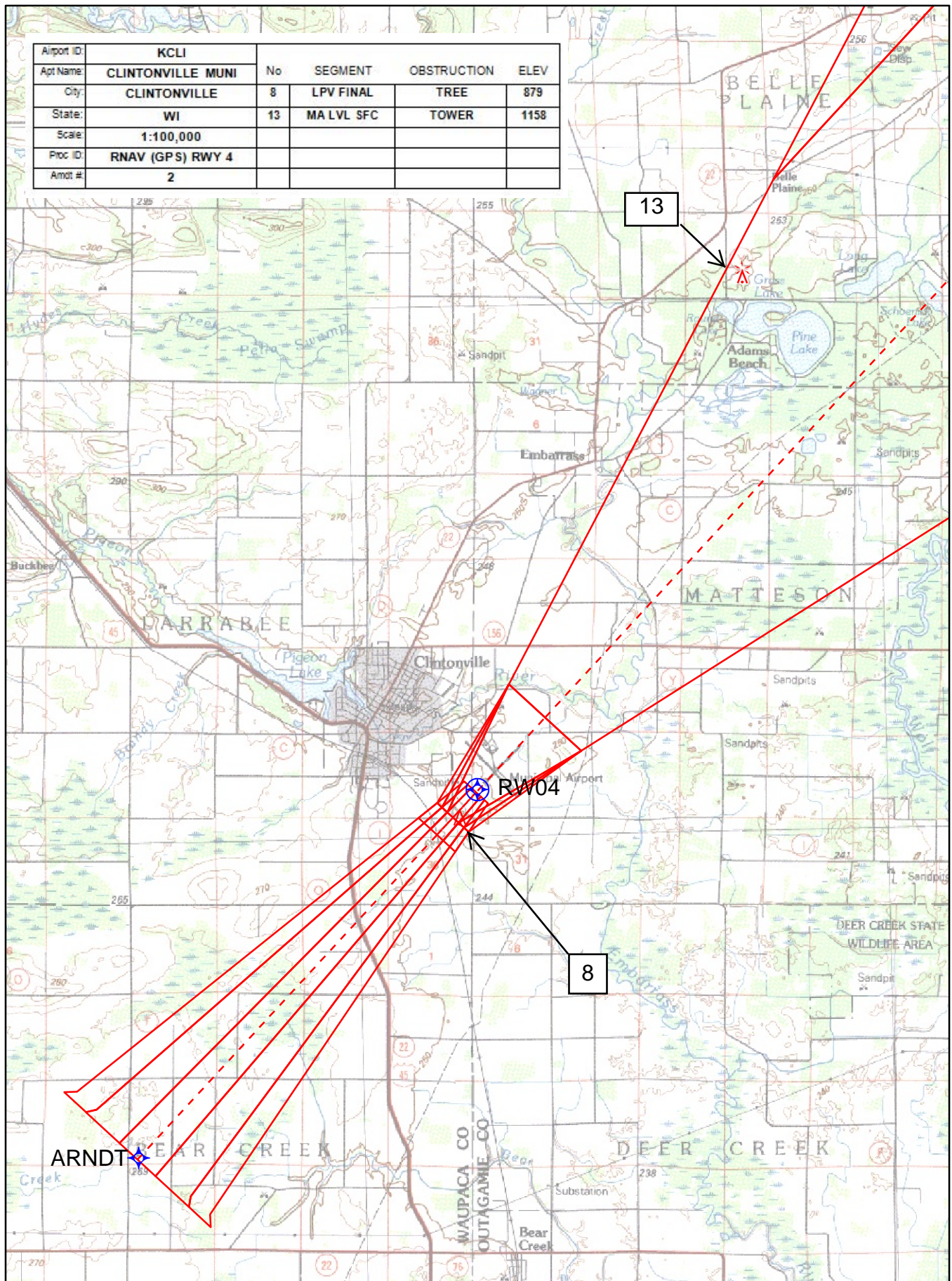
EC-3, 05 JAN 2017 to 02 FEB 2017

EC-3, 05 JAN 2017 to 02 FEB 2017

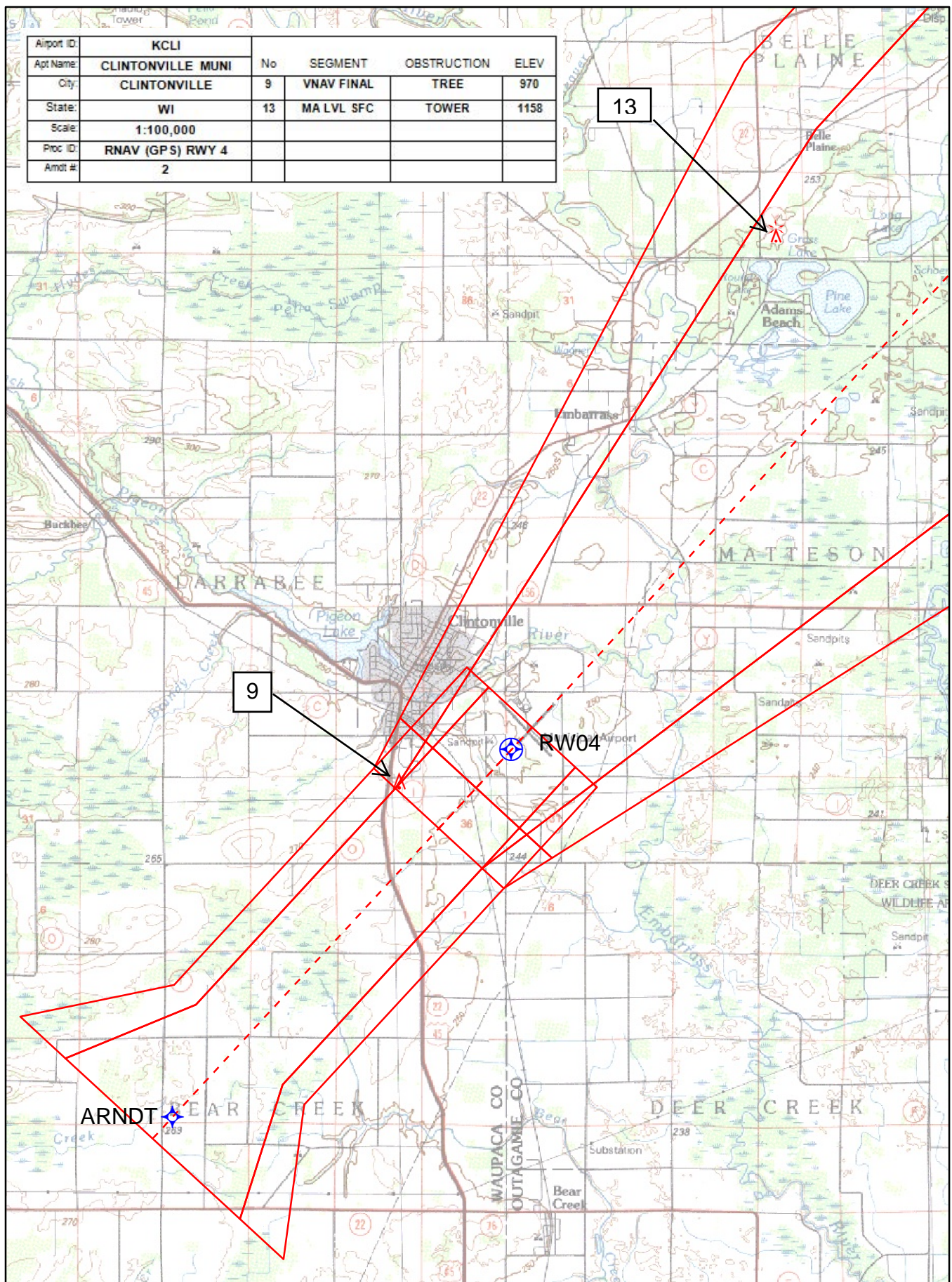
Airport ID:	KCLI	No	SEGMENT	OBSTRUCTION	ELEV
Apt Name:	CLINTONVILLE MUNI	1	FEEDER	AAO	1263
City:	CLINTONVILLE	3	IPUCO INITIAL	AAO	1197
State:	WI	5	EYITI INITIAL	TOWER	1304
Scale:	1:500,000	11	HIL	TOWER	1383
Proc ID:	RNAV (GPS) RWY 4	7	INTERM	TOWER	1212
Amot #:	2	10	LNAV FINAL	AAO	1089
		*	TERPS PARA 289	TREE	987
		9	LNAV FINAL S/D	TREE	970
		13	MA LVL SFC	TOWER	1158
		#	MA HOLDING	AAO	1244



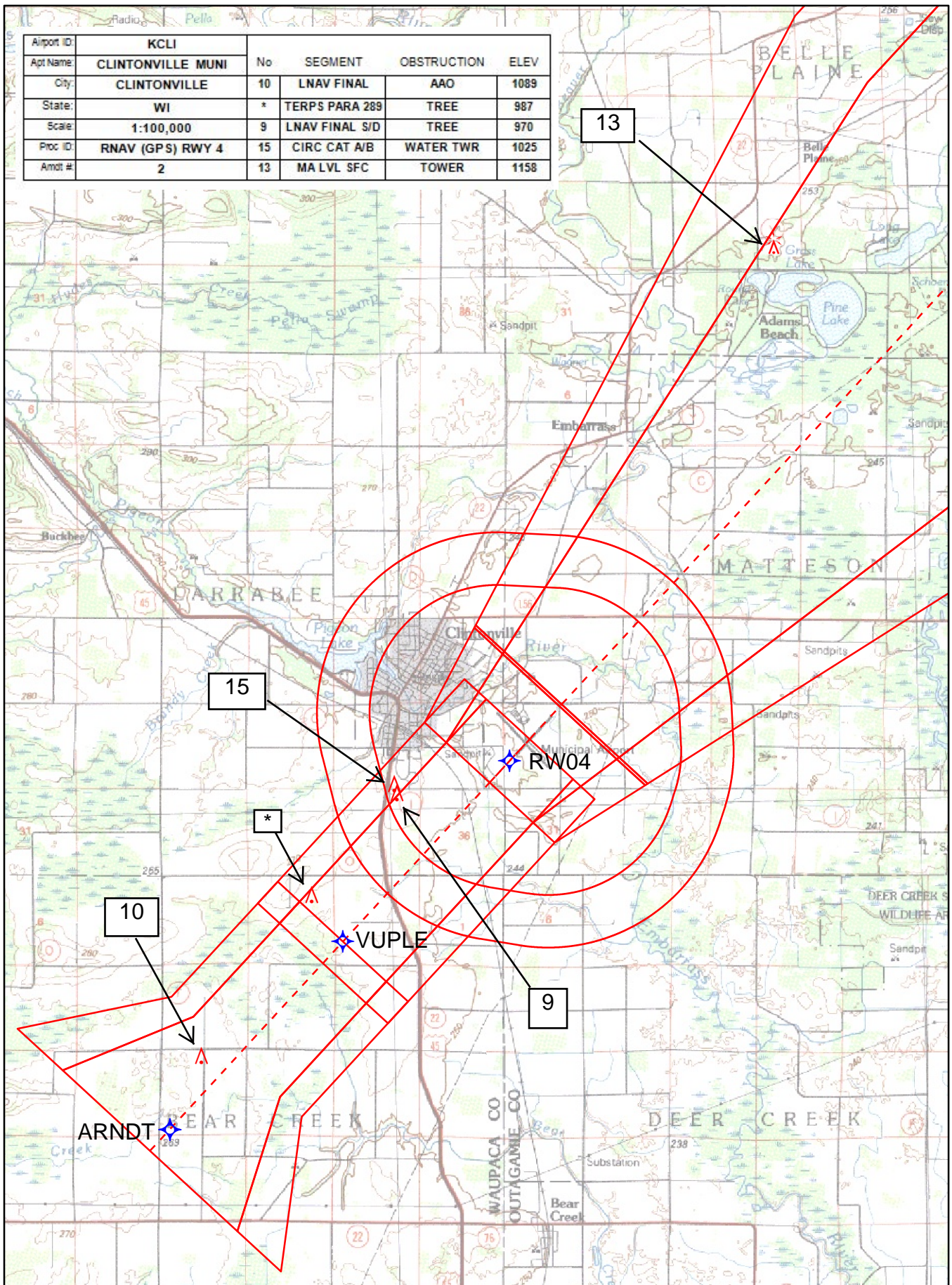
Airport ID:	KCLI	No	SEGMENT	OBSTRUCTION	ELEV
Apt Name:	CLINTONVILLE MUNI	8	LPV FINAL	TREE	879
City:	CLINTONVILLE	13	MA LVL SFC	TOWER	1158
State:	WI				
Scale:	1:100,000				
Proc ID:	RNAV (GPS) RWY 4				
Amdt #:	2				



Airport ID:	KCLI	No	SEGMENT	OBSTRUCTION	ELEV
Apt Name:	CLINTONVILLE MUNI	9	VNAV FINAL	TREE	970
City:	CLINTONVILLE	13	MA LVL SFC	TOWER	1158
State:	WI				
Scale:	1:100,000				
Proc ID:	RNAV (GPS) RWY 4				
Amot #:	2				



Airport ID:	KCLI	No	SEGMENT	OBSTRUCTION	ELEV
Apt Name:	CLINTONVILLE MUNI	10	LNAV FINAL	AAO	1089
City:	CLINTONVILLE	*	TERPS PARA 289	TREE	987
State:	WI	9	LNAV FINAL S/D	TREE	970
Scale:	1:100,000	15	CIRC CAT A/B	WATER TWR	1025
Proc ID:	RNAV (GPS) RWY 4	13	MA LVL SFC	TOWER	1158
Amdt #:	2				



13

15

10

9

RW04

VUPLE

ARNDT

*

TERMINAL AIRSPACE DATA REQUIREMENTS

CITY: CLINTONVILLE

STATE: WI

AIRPORT NAME: CLINTONVILLE MUNI

ID: KCLI

PROCEDURE: RNAV (GPS) RWY 4

AMDT: 2

DOCKET # :

(96-AXX-X/Required/Not Required)

ALL DIST TO 1/100 NM; ELEV TO NEAREST FT; COORD TO 1/100 SEC; DEG TO 1/100 DG.

- | | | | |
|---|------------|--------------------------------|-------------|
| 1. Distance from | THLD | to 1000' point | 3.21 |
| <small>(Enter THLD, FAF, ARP, FACILITY, as appropriate)</small> | | | |
| 2. Width of | FINAL | segment at 1000' point | 1.20 |
| <small>(Enter appropriate segment , final, intermediate, etc.)</small> | | | |
| 3. True Course of | FINAL | segment containing 1000' point | 042.62 |
| 4. High Terrain in | FINAL | segment containing 1000' point | 889 |
| 5. Distance from | THLD | to 1500' point | 4.89 |
| <small>(If 1500' point in PT maneuvering area or holding pattern note in remarks)</small> | | | |
| 6. Width of | FINAL | segment at 1500' point | 1.39 |
| 7. True Course of | FINAL | segment containing 1500' point | 042.62 |
| 8. High Terrain in | FINAL | segment containing 1500' point | 889 |
| 9. Threshold Coordinates (if straight-in) ... | 443635.67N | / | 0884407.24W |
| 10. ARP Coordinates | 443647.40N | / | 0884351.20W |
| 11. Runway Approach End and distance furthest from ARP.....RWY | | | 14 |
| | | Distance | 0.43 NM |
| 12. FAF Coordinates | 443250.89N | / | 0884856.94W |
| <small>(Click to Select)</small> | | | |

REMARKS: