

Flight Procedure Tracking Form		Action: FLIGHT CHECK	Task Type: IAP	Date Open: 06/02/2014	Task #: 2014060225960901001	Request #: 20140602259609
Procedure: APPROACH RNAV (GPS) RWY 3 ORIG			Airport ID: K49A	Airport: GILMER COUNTY		Reimbursable #: NO
City: ELLIJAY	ST: GA	GPS #:	Estimated Chart Date: 05/24/2018		FICO #:	
Fac ID: N/A		Fac. Type:		Specialist: DIANE LAIR		
Procedure Review						
	Rec'd	Rel'd	Full Name	Comments		
Lead:	11/27/2017			QUALITY 10 CHECKED		
QA:						
Liaison:						
Procedure Comments:			ENROUTE	Remark Type: INFORMATION		
PENDING DATA USED FOR K49A AIRPORT AND RUNWAYS VFR TO IFR AIRPORT ASSIGNED MAG/VAR: K49A: OLD 2W - NEW 5W CONTACT: PATRICK MULQUEEN 405-954-4073 OR DAVID TEFFETELLER 301-427-4767						
ARI SAVED 1/19/18						

WAAS CH 45941 W03A	APP CRS 033°	Rwy Idg 3507 TDZE 1481 Apt Elev 1486
--	------------------------	---

RNAV (GPS) RWY 3

GILMER COUNTY (49A)

RNP APCH.

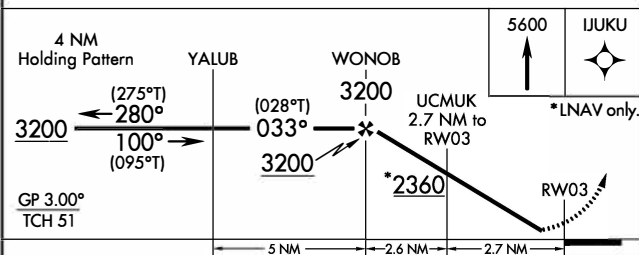
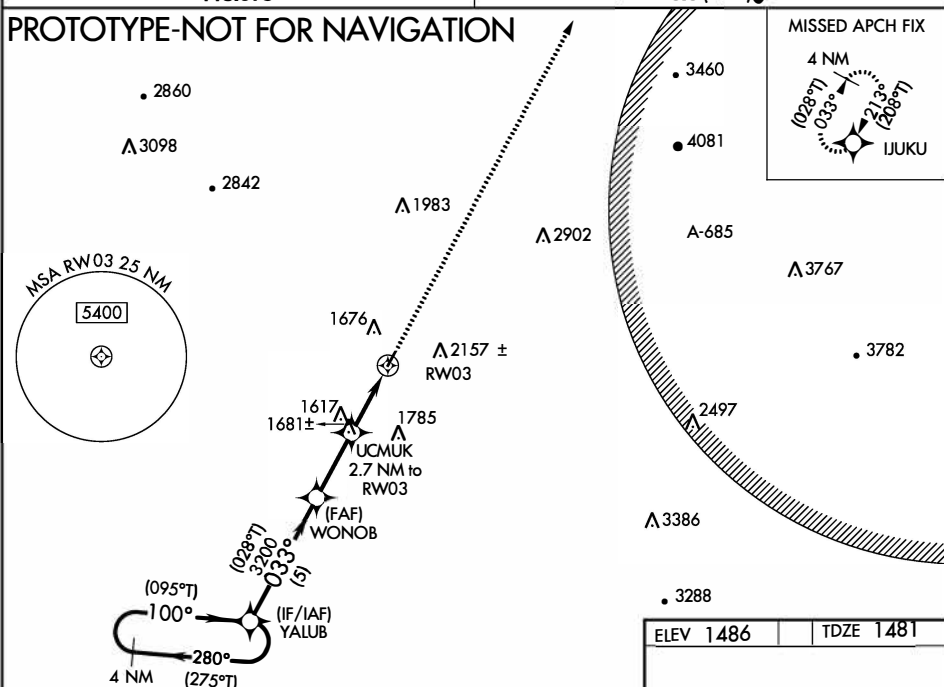
For uncompensated Baro-VNAV systems, LNAV/VNAV NA below -17°C (2°F) or above 54°C (130°F).
 Rwy 03 helicopter visibility reduction below 1 SM NA.
 Procedure NA at night.

MISSED APPROACH:
 Climb to 5600 direct
 IJUKU and hold, continue
 climb-in-hold to 5600.

AWOS-3
118.075

UNICOM
123.0 (CTAF)

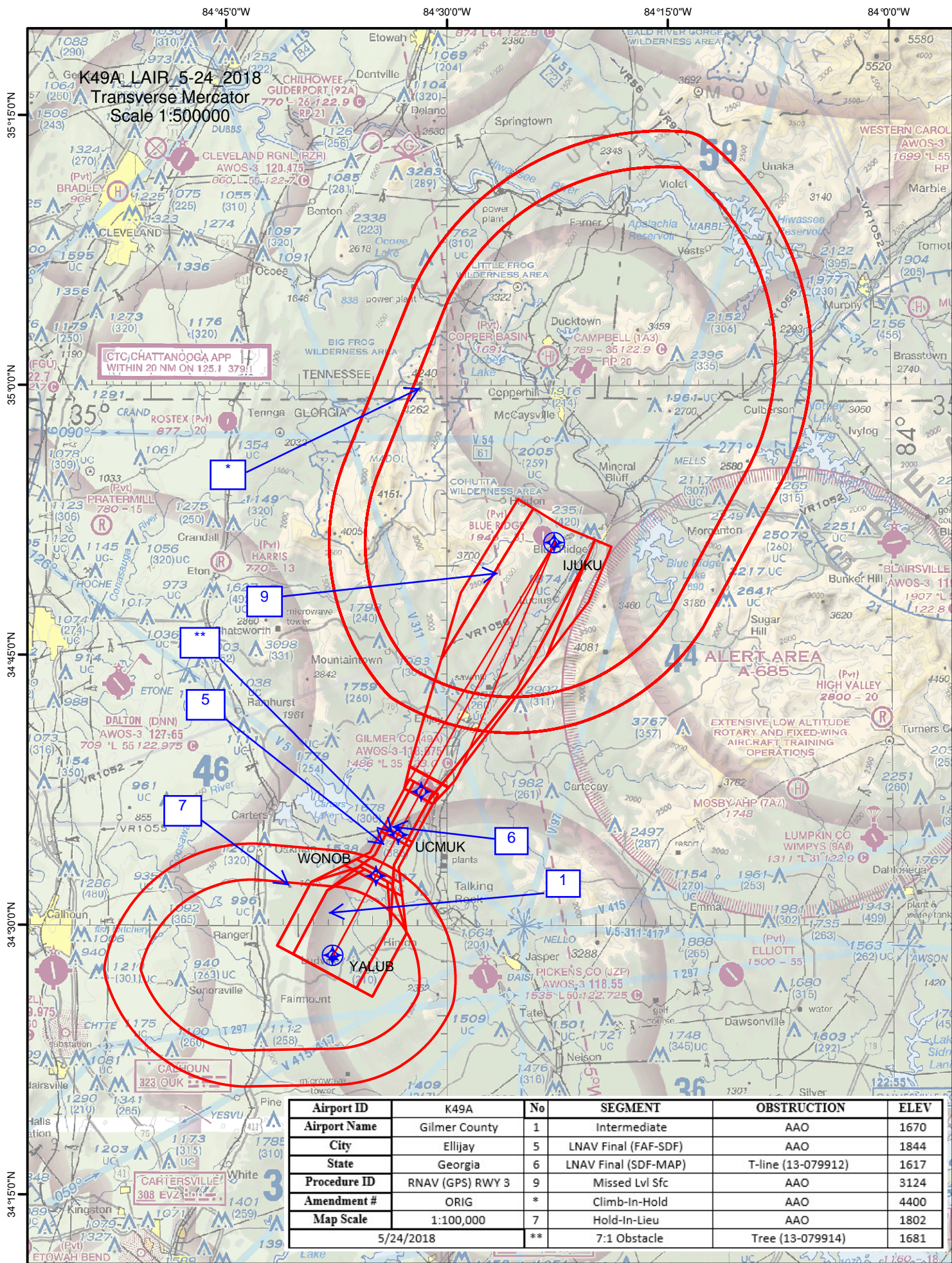
PROTOTYPE-NOT FOR NAVIGATION



CATEGORY	A	B	C	D
LPV DA	1731-1		250 (300-1)	
LNAV/VNAV DA	1790-1		309 (400-1)	
LNAV MDA	1880-1 399 (400-1)		1880-1½ 399 (400-1½)	
CIRCLING	1980-1 494 (500-1)	2560-1½ 1074 (1100-1½)	2560-3 1074 (1100-3)	

033° to
 RW03

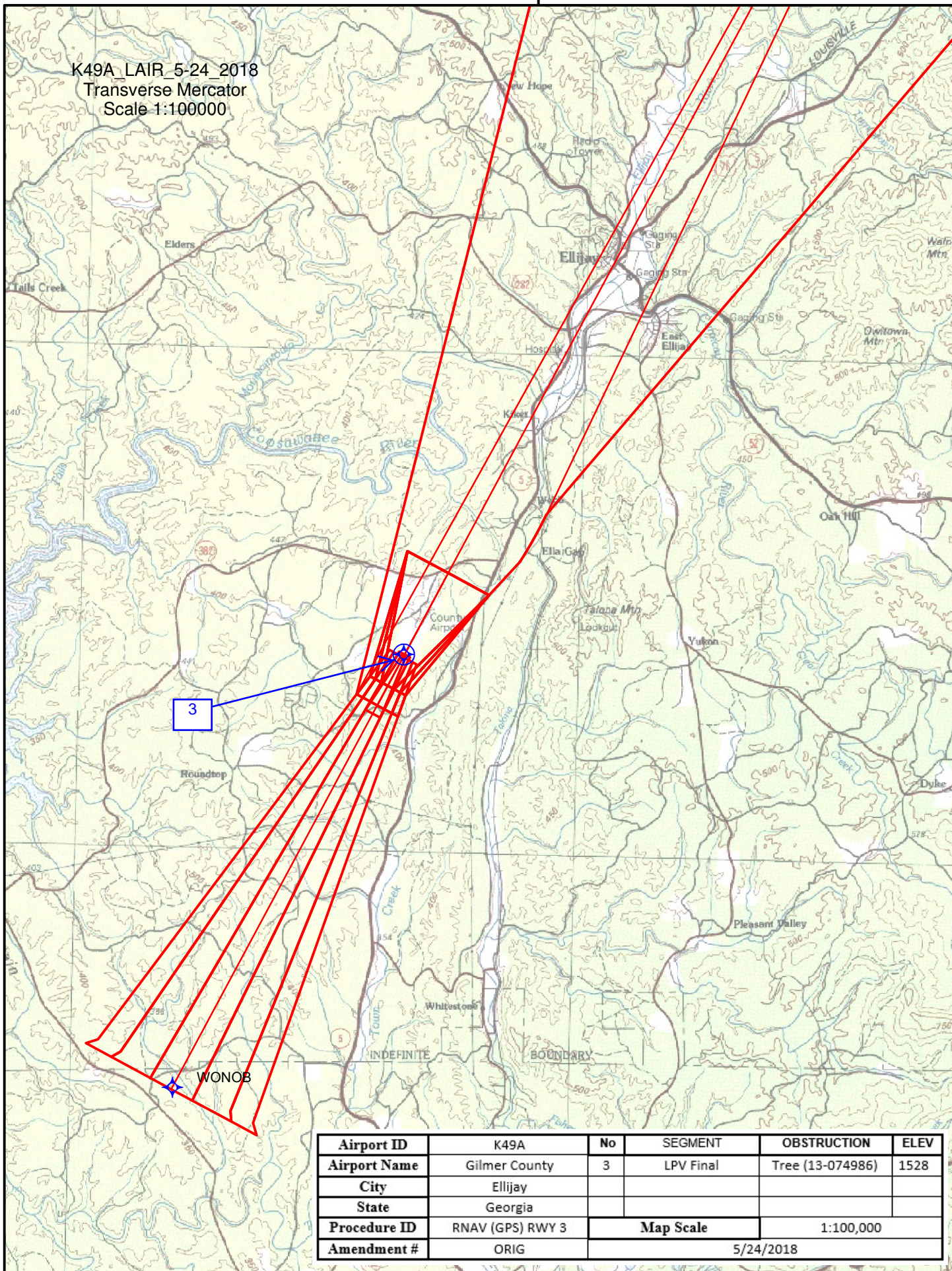
MIRL Rwy 3-21



Airport ID	K49A	No	SEGMENT	OBSTRUCTION	ELEV
Airport Name	Gilmer County	1	Intermediate	AAO	1670
City	Ellijay	5	LNAV Final (FAF-SDF)	AAO	1844
State	Georgia	6	LNAV Final (SDF-MAP)	T-line (13-079912)	1617
Procedure ID	RNAV (GPS) RWY 3	9	Missed Lvl Sfc	AAO	3124
Amendment #	ORIG	*	Climb-In-Hold	AAO	4400
Map Scale	1:100,000	7	Hold-In-Lieu	AAO	1802
5/24/2018		**	7:1 Obstacle	Tree (13-079914)	1681

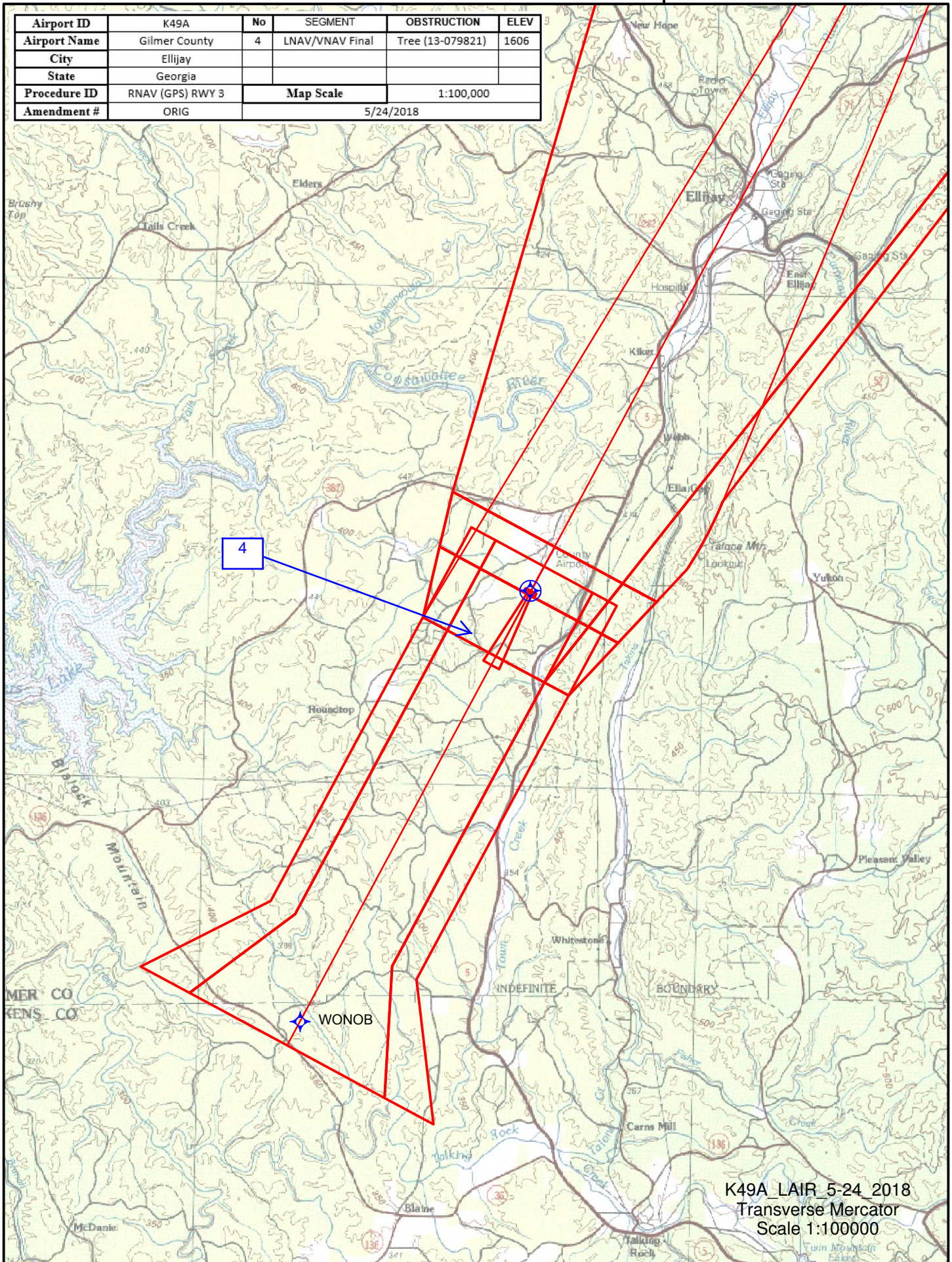
84°30'0"W

K49A LAIR 5-24-2018
Transverse Mercator
Scale 1:100000



Airport ID	K49A	No	SEGMENT	OBSTRUCTION	ELEV
Airport Name	Gilmer County	3	LPV Final	Tree (13-074986)	1528
City	Ellijay				
State	Georgia				
Procedure ID	RNAV (GPS) RWY 3	Map Scale		1:100,000	
Amendment #	ORIG	5/24/2018			

Airport ID	K49A	No	SEGMENT	OBSTRUCTION	ELEV
Airport Name	Gilmer County	4	LNAV/VNAV Final	Tree (13-079821)	1606
City	Ellijay				
State	Georgia				
Procedure ID	RNAV (GPS) RWY 3	Map Scale		1:100,000	
Amendment #	ORIG	5/24/2018			



K49A LAIR 5-24-2018
 Transverse Mercator
 Scale 1:100000

Federal Aviation Administration Categorical Exclusion Declaration

Date: 10/31/2017

IFP: Davis, Reginald (Reginald.CTR.Davis@faa.gov)

Airport Contact: (mmcintosh@croyengineering.com)

Request ID: 49A_171019_29

Single or Multiple Procedure:

Procedure Name(s):

RNAV (GPS) RWY 03

Procedure Request Description:

New Procedure Request for 49A

Declaration of Exclusion:

The FAA has reviewed the above referenced proposed action and it has been determined, by the undersigned, to be categorically excluded from further environmental documentation according to FAA Order 1050.1, "Environmental Impacts: Policies and Procedures." The implementation of this action will not result in any extraordinary circumstances in accordance with FAA Order 1050.1.

Basis for this Determination:

This review was conducted in accordance with policies and procedures in Department of Transportation Order 5610.1, "Procedures for Considering Environmental Impacts" and FAA Order 1050.1.

The applicable Categorical Exclusion is:

- 5- Establishment of new or revised air traffic control procedures conducted at 3,000 feet or more above ground
- 6.5.i: level (AGL); procedures conducted below 3,000 feet AGL that do not cause traffic to be routinely routed over noise sensitive areas; modifications to currently approved procedures conducted below 3,000 feet AGL that do not significantly increase noise over noise sensitive areas; and increases in minimum altitudes and landing minima. For modifications to air traffic procedures at or above 3,000 feet AGL, the Noise Screening Tool (NST) or other FAA-approved environmental screening methodology should be applied. (ATO, AVS)

The above flight procedure has been developed within the accepted parameters.

Concurrence/Reviewed By:

Andrew Pironi

Date: October 31, 2017

Title:

Environmental Protection Specialist

Approved By:

Emerson D. Colvin for

Joey Medders

Date:

October 31, 2017

Title:

North and Environmental Team Manager, Operations Support Group

Magnetic Variation (MV) Declination Request

☐ New Assignment ☒ Change

Requested by: LONNIE EVERHART

Organization: AJV-5310

Phone:

Current Magnetic Declination of Record: 2 ° West

Epoch Year: 1985

New Magnetic Declination of Record: 5 ° West

Epoch Year: 2020

Airport Information

Airport ID: K49A

NASR ID (if different):

Airport Name: GILMER COUNTY

Airport City: ELLIJAY

State/Country: GA

Navigational Aid Information [ALL Facility IDs and Types]

* Facilities on Airports. At airports with localizer(s) or more than one navigational aid, the MV at the airport reference point (ARP) must be designated and assigned to all facilities at that airport, including all components of the ILS.

Concurrent with Publication of Procedure(s), list all affected procedures and include the AMDT.#

* The Procedure Tracking System (PTS) has Task Report Type "MAGVAR" available. Please add the MAGVAR Report Type Code to all task listed that are affected by the MV update.

RNAV (GPS) RWY 21 ORIG

RNAV (GPS) RWY 3 ORIG

ELLIJAY GA K49 ORIG

PTS Estimated Chart Date: 2018-05-24 - TPP

Comments:

VFR to IFR Airport - RWY numbers are not changing 03/21 still within tolerance per IFP RQ form

Form Submission for Specialists:

Save this form to your computer, then email it
(as an attachment) to your Manager/Supervisor.

For Lead/Manager Use Only

Comments (if applicable):

Lead/Manager:

Phone:

Submit to IFP Coordination Team

TERMINAL AIRSPACE DATA REQUIREMENTS

CITY: **ELLIJAY**

STATE: **GA**

AIRPORT NAME: **GILMER COUNTY**

ID: **K49A**

PROCEDURE: **RNAV (GPS) RWY 3**

AMDT: **ORIG**

DOCKET#: **17-ASO-5**
(96-AXX-X/Required/Not Required)

ALL DIST TO 1/100 NM; ELEV TO NEAREST FT; COORD TO 1/100 SEC; DEG TO 1/100 DG.

- | | | | |
|--|---|--------------------------------|---------------|
| 1. Distance from | <u>THLD</u> | to 1000' point | <u>3.31</u> |
| | <small>(Enter THLD, FAF, ARP, FACILITY, as appropriate)</small> | | |
| 2. Width of | <u>FINAL</u> | segment at 1000' point | <u>1.20</u> |
| | <small>(Enter appropriate segment, final, intermediate, etc.)</small> | | |
| 3. True Course of | <u>FINAL</u> | segment containing 1000' point | <u>028.23</u> |
| 4. High Terrain in | <u>FINAL</u> | segment containing 1000' point | <u>1644</u> |
| 5. Distance from | <u>THLD</u> | to 1500' point | <u>5.11</u> |
| | <small>(If 1500' point in PT maneuvering area or holding pattern note in remarks)</small> | | |
| 6. Width of | <u>FINAL</u> | segment at 1500' point | <u>1.95</u> |
| 7. True Course of | <u>FINAL</u> | segment containing 1500' point | <u>028.23</u> |
| 8. High Terrain in | <u>FINAL</u> | segment containing 1500' point | <u>1644</u> |
| 9. Threshold Coordinates (if straight-in) ... | <u>343726.23N / 0843145.51W</u> | | |
| 10. ARP Coordinates | <u>343741.50N / 0843135.60W</u> | | |
| 11. Runway Approach End and distance furthest from ARP | RWY | <u>21</u> | |
| | Distance | <u>0.29</u> | NM |
| 12. FAF Coordinates | <u>343245.05N / 0843448.14W</u> | | |

REMARKS: Approach/Drawing attached.