



Flight Procedure Tracking Form		Action: FLIGHT CHECK	Task Type: IAP	Date Open: 02/25/2015	Task #: 2014051415295301001	Request #: 20140514152953
Procedure: VOR RWY 28R AMDT 0B			Airport ID: KMOD	Airport: MODESTO CITY-CO-HARRY SHAM FLD		Reimbursable #: NO
City: MODESTO	ST: CA	GPS #:	Estimated Chart Date: 01/03/2019		FICO #:	
Fac ID: MOD		Fac. Type: VOR_DME			Specialist: NICHOLAS JACKSON	
Procedure Review						
	Rec'd	Rel'd	Full Name	Comments		
Lead:	08/25/2016					
QA:				CWS 9/25/2018		
Liaison:						
Procedure Comments:			Remark Type: INFORMATION			
<p>ABBREVIATED AMENDMENT</p> <p>ACTIVE AIRPORT DATA UTILIZED</p> <p>ACTIVE MOD V/DME DATA UTILIZED</p> <p>THIS CANCELS FDC NOTAM 8/3539</p> <p>CONTACTS: DONALD LANIER 405.954.8242 OR PATRICK MULQUEEN 405.954.4073</p>						

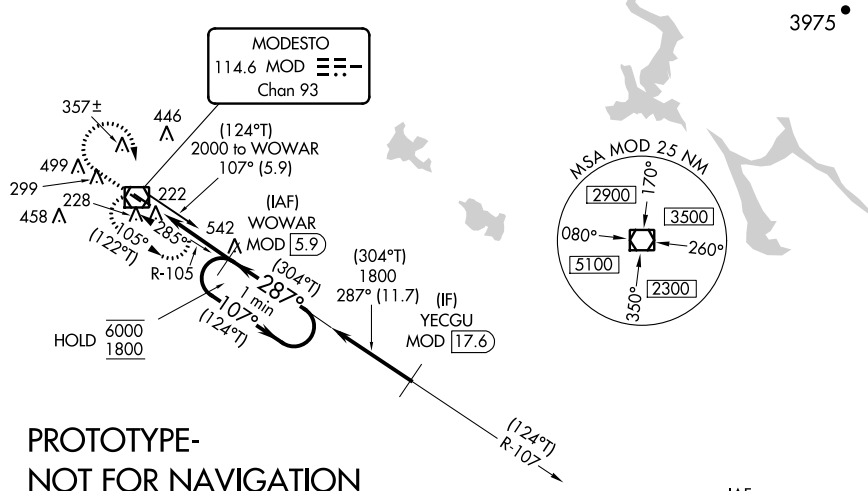
QUALITY
25
CHECKED

VOR/DME MOD 114.6 Chan 93	APP CRS 287°	Rwy Idg 5904 TDZE 91 Apt Elev 99
---	------------------------	--

VOR RWY 28R

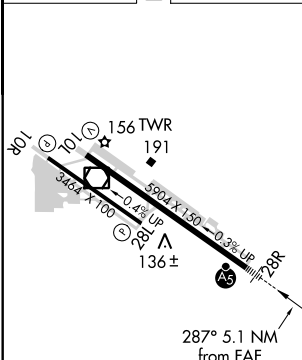
MODESTO CITY-COUNTY-HARRY SHAM FIELD (MOD)

DME required.		MALSR 	MISSED APPROACH: Climb to 900 then climbing right turn to 2000 direct MOD VOR/DME and hold.	
 For inop ALS increase S-28R Cat C/D visibility 1½ SM.				
ATIS 127.7	NORCAL APP CON 120.95 269.45	MODESTO TOWER ★ 125.3 (CTAF) 0 257.8	GND CON 121.7	UNICOM 122.95



PROTOTYPE-
NOT FOR NAVIGATION

ELEV	99	D	TDZE	91
------	----	----------	------	----



REIL Rwy 10L **L**
MIRL Rwy 10R-28L
HIRL Rwy 10L-28R **L**

900 ↑	2000 ↗	MOD ☐	WOWAR MOD 5.9 One Minute Holding Pattern			
ZIMEM MOD 1.9 0.8 1.1 NM			(304°T) 287° 3.09° TCH 53			
(124°T) 107° → 6000 ← 287° 1800 (304°T)						
CATEGORY	A	B	C	D		
S-28R	480-½ 389 (400-½)		480-¾ 389 (400-¾)			
CIRCLING	540-1 441 (500-1)	560-1 461 (500-1)	600-1½ 501 (600-1½)	660-2 561 (600-2)		

