

Flight Procedure Tracking Form		Action: FLIGHT CHECK	Task Type: IAP	Date Open: 05/12/2014	Task #: 2014051227090301001	Request #: 20140512270903
Procedure: RNAV (GPS) RWY 32 AMDT 1			Airport ID: KTDZ	Airport: TOLEDO EXECUTIVE		Reimbursable #: NO
City: TOLEDO	ST: OH	GPS #:	Estimated Chart Date: 07/21/2016		FICO #:	
Fac ID: N/A		Fac. Type:		Specialist: JAMES ROGERS		
Procedure Review						
	Rec'd	Rel'd	Full Name	Comments		
Lead:	12/29/2014					
QA:		3/18, 4/1, 4/9, 4/10	CLARK			
Liaison:						
Procedure Comments:			Remark Type: INFORMATION			
<p>ADDED LPV AND LNAV/VNAV LINES OF MINIMA AND REMOVED LP.</p> <p>PENDING DATA USED FOR KTDZ AIRPORT.</p> <p>PENDING DATA USED FOR RWY 32.</p> <p>CONTACT: JACOB POWERS 405-954-8702 / PETER GETZ 405-954-4919 AJV-5420 POC'S</p>						

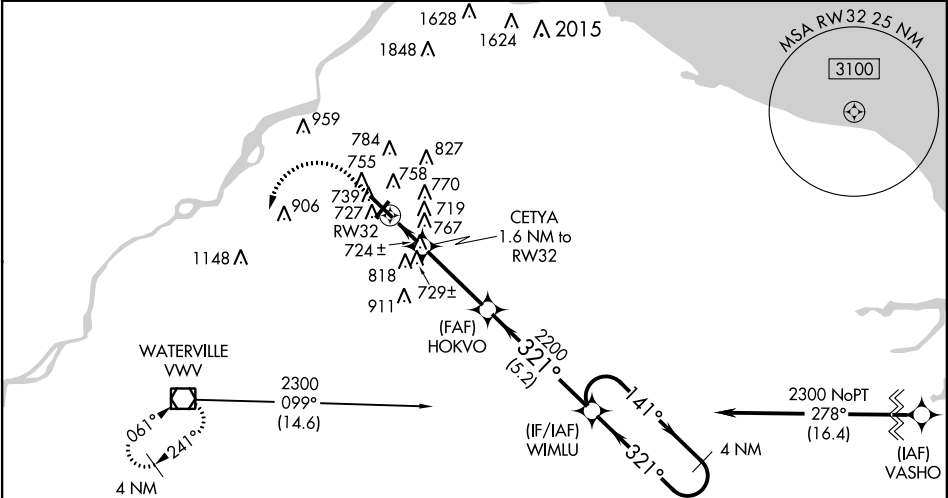
WAAS CH 70524 W32A	APP CRS 321°	Rwy Idg TDZE Apt Elev 4927 621 623
--	------------------------	--

RNAV (GPS) RWY 32
TOLEDO EXECUTIVE AIRPORT (TDZ)

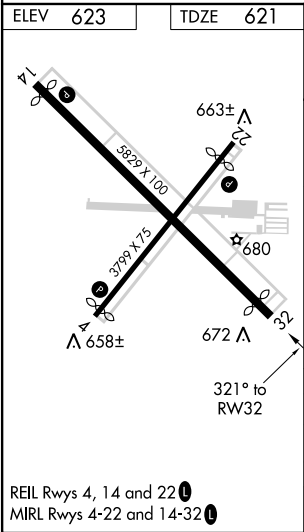
⚠ For uncompensated Baro-VNAV systems, LNAV/VNAV NA below -21 C (-5 F) or above 54 C (130 F). DME/DME RNP-0.3 NA. When local altimeter setting not received, use Toledo Express altimeter setting and increase LPV DA to 914, LNAV/VNAV DA to 1123 and all visibilities 1/8 mile. Increase all MDA 60 feet and increase LNAV Category C and D visibility 1/4 mile. Helicopter visibility reduction below 3/4 SM NA. Night landing rwy 14 NA. Baro-VNAV NA when using Toledo Express altimeter setting.

MISSED APPROACH: Climb to 1100 then climbing left turn to 2300 direct VVV VOR/DME and hold.

ASOS 121.575	TOLEDO APP CON 126.1 307.0	CLNC DEL 125.6	UNICOM 123.05 (CTAF) 0
------------------------	--------------------------------------	--------------------------	----------------------------------



Procedure NA for arrivals at VVV VOR/DME on airway radials 015 CW 150.



REIL Rwy 4, 14 and 22
MIRL Rwy 4-22 and 14-32

<div><div>1100</div><div>2300</div><div>VVV</div></div>	<div><div>1100</div><div>2300</div><div>WIMLU</div></div>	<div><div>1100</div><div>2300</div><div>WIMLU</div></div>	<div><div>1100</div><div>2300</div><div>WIMLU</div></div>	<div><div>1100</div><div>2300</div><div>WIMLU</div></div>
*LNAV only.	CETYA 1.6 NM to RW32	HOKVO 2200 TCH 45	WIMLU	4 NM Holding Pattern
CATEGORY	A	B	C	D
LPV DA		871-1	250 (300-1)	
LNAV/VNAV DA		1080-1½	459 (500-1½)	
LNAV MDA	1020-1	399 (400-1)	1020-1½	399 (400-1½)
CIRCLING	1080-1 457 (500-1)	1100-1 477 (500-1)	1200-1½ 577 (600-1½)	1320-2¼ 697 (700-2¼)

OLD

TOLEDO, OHIO

AL-421 (FAA)

14317

WAAS CH 70524 W32A	APP CRS 321°	Rwy Idg TDZE Apt Elev	4927 621 623
--	------------------------	-----------------------------	---

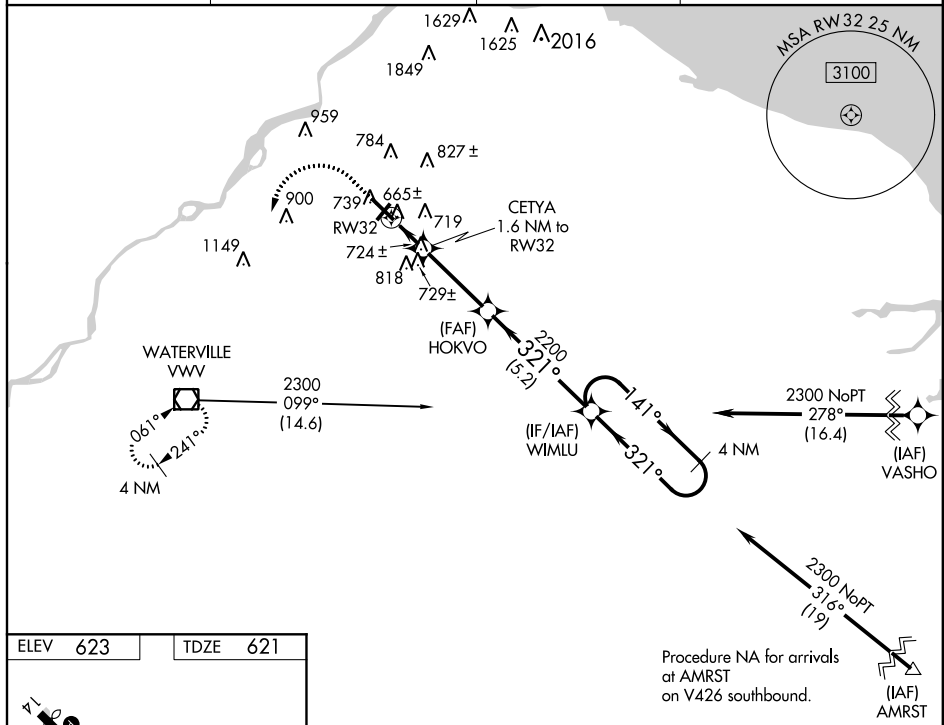
RNAV (GPS) RWY 32

TOLEDO EXECUTIVE AIRPORT (TDZ)

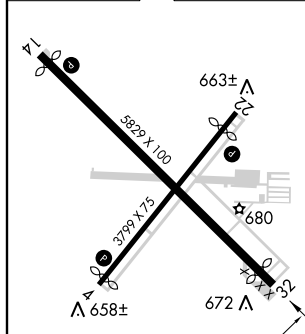
⚠ DME/DME RNP-0.3 NA. Helicopter visibility reduction below 1 SM NA. When local altimeter setting not received, use Toledo Express altimeter setting and increase all MDA 60 feet and increase LP and LNAV Cats C and D visibility $\frac{1}{8}$ mile. Procedure NA at night.

MISSED APPROACH: Climb to 1100 then climbing left turn to 2300 direct VVV VOR/DME and hold.

ASOS 121.575	TOLEDO APP CON 126.1 307.0	CLNC DEL 125.6	UNICOM 123.05 (CTAF) 0
------------------------	--------------------------------------	--------------------------	----------------------------------



ELEV 623	TDZE 621
----------	----------



REIL Rwy 4, 14 and 22 0	MIRL Rwy 4-22 and 14-32 0
-------------------------	---------------------------

	1100	2300	VVV	4 NM
				Holding Pattern
				WIMLU
				141° → 2300
				← 321°
				2200
				3.00° TCH 40
				1.6 NM
				3.2 NM
				5.2 NM
CATEGORY	A	B	C	D
LP MDA		980-1	359 (400-1)	
LNAV MDA		980-1	359 (400-1)	
CIRCLING	1080-1	457 (500-1)	1100-1½ 477 (500-1½)	1180-2 557 (600-2)

TOLEDO, OHIO
Orig-A 26JUN14

41°34'N-83°29'W

TOLEDO EXECUTIVE AIRPORT (TDZ)
RNAV (GPS) RWY 32

EC-2, 04 FEB 2016 to 03 MAR 2016

EC-2, 04 FEB 2016 to 03 MAR 2016

TERMINAL AIRSPACE DATA REQUIREMENTS

CITY: **TOLEDO**

STATE: **OH**

AIRPORT NAME: **TOLEDO EXECUTIVE**

ID: **KTDZ**

PROCEDURE: **RNAV (GPS) RWY 32**

AMDT: **1**

DOCKET#: **NOT REQUIRED**

(96-AXX-X/Required/Not Required)

ALL DIST TO 1/100 NM; ELEV TO NEAREST FT; COORD TO 1/100 SEC; DEG TO 1/100 DG.

- | | | | |
|---|-------------------------------------|--------------------------------|---------------|
| 1. Distance from | <u>THLD</u> | to 1000' point | <u>3.24</u> |
| <small>(Enter THLD, FAF, ARP, FACILITY, as appropriate)</small> | | | |
| 2. Width of | <u>FINAL</u> | segment at 1000' point | <u>1.20</u> |
| <small>(Enter appropriate segment, final, intermediate, etc.)</small> | | | |
| 3. True Course of | <u>FINAL</u> | segment containing 1000' point | <u>314.10</u> |
| 4. High Terrain in | <u>FINAL</u> | segment containing 1000' point | <u>747</u> |
| 5. Distance from | <u>THLD</u> | to 1500' point | <u>4.82</u> |
| <small>(If 1500' point in PT maneuvering area or holding pattern note in remarks)</small> | | | |
| 6. Width of | <u>FINAL</u> | segment at 1500' point | <u>2.13</u> |
| 7. True Course of | <u>FINAL</u> | segment containing 1500' point | <u>314.10</u> |
| 8. High Terrain in | <u>FINAL</u> | segment containing 1500' point | <u>747</u> |
| 9. Threshold Coordinates (if straight-in) ... | <u>413338.1925N / 0832832.5817W</u> | | |
| 10. ARP Coordinates | <u>413353.8000N / 0832856.0000W</u> | | |
| 11. Runway Approach End and distance furthest from ARP | RWY | <u>14</u> | |
| | Distance | <u>0.51</u> | NM |
| 12. FAF Coordinates | <u>413017.04N / 0832356.090W</u> | | |

REMARKS: Approach/Drawing attached.

RWY 32 DRWT COORDINATES.

